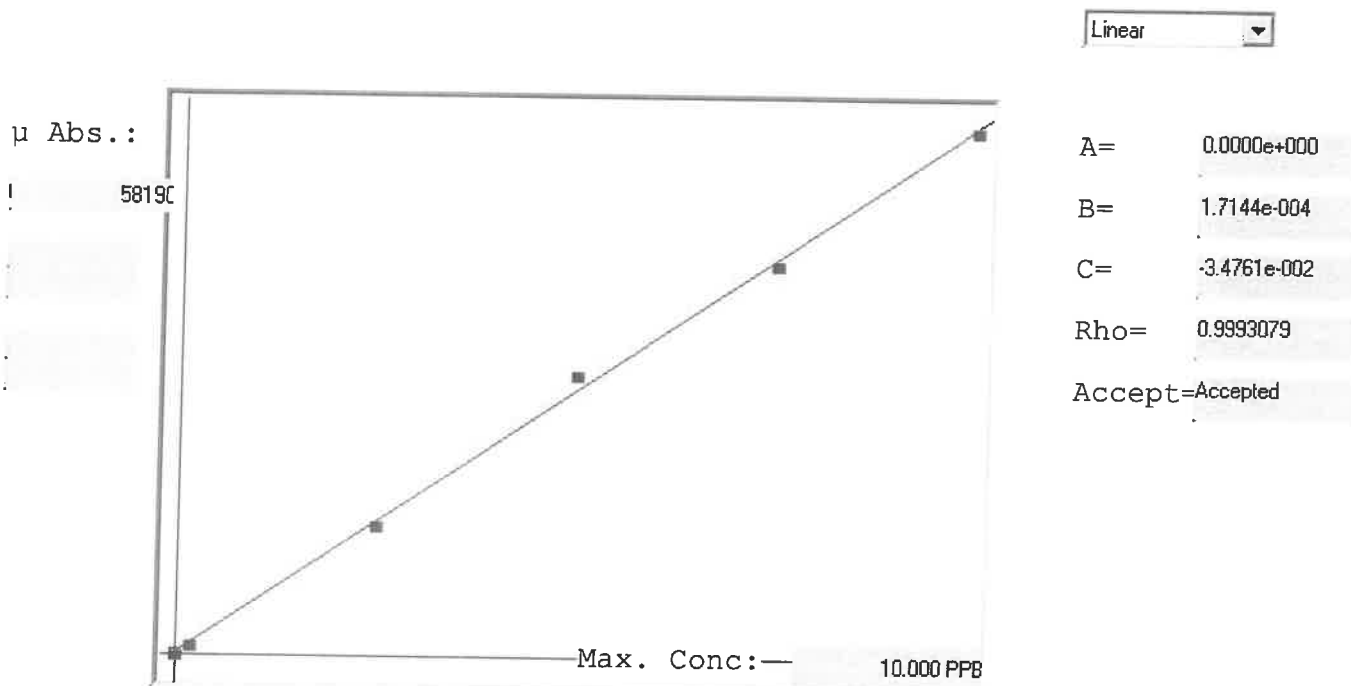


LB137962
INSTRUMENT ID:CV1

7471B



Std ID	Conc.	Calc.	Dev.	Mean	SD or %RSD	Rep 1	Rep 2	Rep 3	Rep 4	Rep 5
0.0	0.000	-0.015	-0.015	113	0.000	113				
0.2	0.200	0.156	-0.044	1110	0.0 %	1110				
2.5	2.500	2.431	-0.069	14384	0.0 %	14384				
5.0	5.000	5.300	0.300	31118	0.0 %	31118				
7.5	7.500	7.388	-0.112	43295	0.0 %	43295				
10.0	10.000	9.941	-0.059	58190	0.0 %	58190				

LB137962 INSTRUMENT ID:CV1

Method: 7471B

Operator: Admin

Date of Analysis: 19 Nov 2025 09:25:21

Type	Sample ID	Extended ID	Conc	μ Abs	Units	Type	Std ConcMethod	Date
S	0.0 - 1	50	-	-40	PPB	Std	0.00007471B	19 Nov 2025 09:32:03
S	0.2 - 1	50.2	-	476	PPB	Std	0.20007471B	19 Nov 2025 09:34:28
S	2.5 - 1	52.5	-	14891	PPB	Std	2.50007471B	19 Nov 2025 09:39:26
S	5.0 - 1	55.0	-	29355	PPB	Std	5.00007471B	19 Nov 2025 09:41:43
S	7.5 - 1	57.5	-	41374	PPB	Std	7.50007471B	19 Nov 2025 09:43:59
S	10.0 - 1	510.0	-	59965	PPB	Std	10.00007471B	19 Nov 2025 09:48:57
U	ICV121 - 1	ICV121	3.9703	23049	PPB	SMPL	-7471B	19 Nov 2025 09:52:33
U	ICB121 - 1	ICB121	0.0083	-260	PPB	SMPL	-7471B	19 Nov 2025 09:54:47
U	CCV12 - 1	CCV12	4.9428	28771	PPB	SMPL	-7471B	19 Nov 2025 09:57:04
U	CCB12 - 1	CCB12	0.0321	-120	PPB	SMPL	-7471B	19 Nov 2025 09:59:18
U	CRA - 1	CRA	0.2067	907	PPB	SMPL	-7471B	19 Nov 2025 10:01:34
U	HighStd - 1	HighStd	9.9475	58215	PPB	SMPL	-7471B	19 Nov 2025 10:03:49
U	ChkStd - 1	ChkStd	6.6521	38827	PPB	SMPL	-7471B	19 Nov 2025 10:06:04
U	PB170614BL - 1	PBS	0.0274	-148	PPB	SMPL	-7471B	19 Nov 2025 10:08:22
U	PB170614BS - 1	LCSS	4.4950	26136	PPB	SMPL	-7471B	19 Nov 2025 10:10:40
U	Q3662-02 - 1	B3-0.0-1.0-20251117	2.1345	12249	PPB	SMPL	-7471B	19 Nov 2025 10:12:56
U	Q3662-04 - 1	B3-0.0-1.0-20251117	1.5600	8869	PPB	SMPL	-7471B	19 Nov 2025 10:15:14
U	Q3664-01 - 1	ARS20-0001	0.1081	327	PPB	SMPL	-7471B	19 Nov 2025 10:17:31
U	Q3664-03 - 1	ARS20-0013	0.1263	434	PPB	SMPL	-7471B	19 Nov 2025 10:19:48
U	Q3664-05 - 1	291399	0.4037	2066	PPB	SMPL	-7471B	19 Nov 2025 10:22:03
U	CCV13 - 1	CCV13	4.8670	28325	PPB	SMPL	-7471B	19 Nov 2025 10:24:19
U	CCB13 - 1	CCB13	0.0354	-101	PPB	SMPL	-7471B	19 Nov 2025 10:26:34
U	Q3669-01 - 1	EO-01-11182025	0.4448	2308	PPB	SMPL	-7471B	19 Nov 2025 10:28:51
U	Q3669-01DUP - 1	EO-01-11182025DUP	0.4392	2275	PPB	SMPL	-7471B	19 Nov 2025 10:31:06
U	Q3669-01MS - 1	EO-01-11182025MS	5.0377	29329	PPB	SMPL	-7471B	19 Nov 2025 10:33:21
U	Q3669-01MSD - 1	EO-01-11182025MSD	4.8001	27931	PPB	SMPL	-7471B	19 Nov 2025 10:35:37
U	Q3669-01LX5 - 1		0.1018	290	PPB	SMPL	-7471B	19 Nov 2025 10:37:55
U	Q3669-01A - 1		4.4805	26051	PPB	SMPL	-7471B	19 Nov 2025 10:40:13
U	CCV14 - 1	CCV14	4.8132	28008	PPB	SMPL	-7471B	19 Nov 2025 10:42:29
U	CCB14 - 1	CCB14	0.0318	-122	PPB	SMPL	-7471B	19 Nov 2025 10:44:48