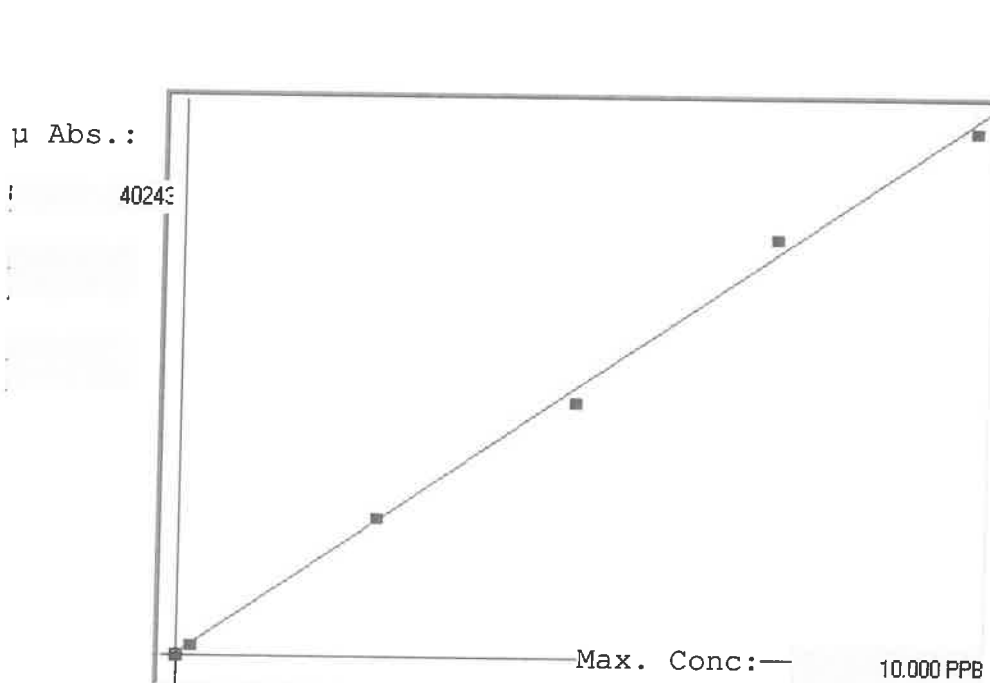


LB137970

7470A

INSTRUMENT ID: CV2



Linear

A= 0.0000e+000

B= 2.4489e-004

C= -2.6499e-002

Rho= 0.9987337

Accept=Accepted

Std ID	Conc.	Calc.	Dev.	Mean	SD or %RSD	Rep 1	Rep 2	Rep 3	Rep 4	Rep 5
0.0	0.000	0.006	0.006	134	0.000	134	0			
0.2	0.200	0.180	-0.020	844	0.0 %	844	0			
2.5	2.500	2.596	0.096	10709	0.0 %	10709	0			
5.0	5.000	4.758	-0.242	19538	0.0 %	19538				
7.5	7.500	7.831	0.331	32084	0.0 %	32084				
10.0	10.000	9.829	-0.171	40243	0.0 %	40243				

LB137970 INSTRUMENT ID : CV1

Method: 7470A

Operator: Admin

Date of Analysis: 19 Nov 2025 14:00:07

Type	Sample ID	Extended ID	Conc	μ Abs	Units	Type	Std Conc	Method	Date
S	0.0 - 1	50	-	134	PPB	Std	0.0000	7470A	19 Nov 2025 14:02:40
S	0.2 - 1	84.2	-	844	PPB	Std	0.2000	7470A	19 Nov 2025 14:04:58
S	2.5 - 1	32.5	-	10709	PPB	Std	2.5000	7470A	19 Nov 2025 14:07:15
S	5.0 - 1	58	-	19538	PPB	Std	5.0000	7470A	19 Nov 2025 14:09:32
S	7.5 - 1	59.5	-	32084	PPB	Std	7.5000	7470A	19 Nov 2025 14:11:49
S	10.0 - 1	511	-	40243	PPB	Std	10.0000	7470A	19 Nov 2025 14:17:59
U	ICV122 - 1	ICV122	4.1648	17114	PPB	SMPL	-7470A		19 Nov 2025 14:23:38
U	ICB122 - 1	ICB122	-0.0417	-82	PPB	SMPL	-7470A		19 Nov 2025 14:25:53
U	CCV15 - 1	CCV15	4.6815	19225	PPB	SMPL	-7470A		19 Nov 2025 14:28:09
U	CCB15 - 1	CCB15	-0.0319	-22	PPB	SMPL	-7470A		19 Nov 2025 14:30:24
U	CRA - 1	CRA	0.1677	793	PPB	SMPL	-7470A		19 Nov 2025 14:32:39
U	HighStd - 1	HighStd	9.6844	39654	PPB	SMPL	-7470A		19 Nov 2025 14:34:54
U	ChkStd - 1	ChkStd	7.3212	30004	PPB	SMPL	-7470A		19 Nov 2025 14:37:09
U	PB170634BL - 1	PBW	-0.0515	-102	PPB	SMPL	-7470A		19 Nov 2025 14:39:27
U	PB170634BS - 1	LCSW	3.7448	15399	PPB	SMPL	-7470A		19 Nov 2025 14:41:43
U	Q3652-04 - 1	TP-1	-0.0603	-138	PPB	SMPL	-7470A		19 Nov 2025 14:43:59
U	Q3652-04DUP - 1	TP-1DUP	-0.0405	-57	PPB	SMPL	-7470A		19 Nov 2025 14:46:15
U	Q3652-04MS - 1	TP-1MS	3.6537	15028	PPB	SMPL	-7470A		19 Nov 2025 14:48:32
U	Q3652-04MSD - 1	TP-1MSD	3.6559	15037	PPB	SMPL	-7470A		19 Nov 2025 14:50:49
U	Q3657-01 - 1	SEWAREN-CONCRETE	-0.0424	-65	PPB	SMPL	-7470A		19 Nov 2025 14:53:04
U	CCV16 - 1	CCV16	4.6548	19116	PPB	SMPL	-7470A		19 Nov 2025 14:55:20
U	CCB16 - 1	CCB16	-0.0458	-79	PPB	SMPL	-7470A		19 Nov 2025 14:57:35
U	Q3659-01 - 1	TANK-1-COMP-1	-0.0111	63	PPB	SMPL	-7470A		19 Nov 2025 14:59:50
U	Q3659-02 - 1	TANK-1-COMP-2	-0.0165	41	PPB	SMPL	-7470A		19 Nov 2025 15:02:06
U	Q3662-05 - 1	B1-0.0-1.0-20251117	-0.0525	-106	PPB	SMPL	-7470A		19 Nov 2025 15:04:22
U	PB170635BL - 1	PBW	-0.0387	-50	PPB	SMPL	-7470A		19 Nov 2025 15:06:37
U	PB170635BS - 1	LCSW	3.6780	15127	PPB	SMPL	-7470A		19 Nov 2025 15:08:53
U	Q3666-02 - 1	BUR-25-0102	0.5240	2248	PPB	SMPL	-7470A		19 Nov 2025 15:11:10
U	Q3666-02DUP - 1	BUR-25-0102DUP	0.5341	2289	PPB	SMPL	-7470A		19 Nov 2025 15:13:26
U	Q3666-02MS - 1	BUR-25-0102MS	2.5853	10665	PPB	SMPL	-7470A		19 Nov 2025 15:15:43
U	Q3666-02MSD - 1	BUR-25-0102MSD	2.9671	12224	PPB	SMPL	-7470A		19 Nov 2025 15:18:01
U	CCV17 - 1	CCV17	4.8042	19726	PPB	SMPL	-7470A		20 Nov 2025 07:42:37
U	CCB17 - 1	CCB17	-0.0314	-20	PPB	SMPL	-7470A		20 Nov 2025 07:45:04
U	PB170600TB - 1		-0.0177	36	PPB	SMPL	-7470A		20 Nov 2025 07:47:21
U	Q3652-04LX5 - 1		-0.0226	16	PPB	SMPL	-7470A		20 Nov 2025 07:49:36
U	Q3652-04A - 1		4.1087	16886	PPB	SMPL	-7470A		20 Nov 2025 07:51:52
U	Q3666-02A - 1		4.1007	16853	PPB	SMPL	-7470A		20 Nov 2025 07:56:24
U	Q3666-02LX5 - 1		0.0142	166	PPB	SMPL	-7470A		20 Nov 2025 07:59:11
U	CCV18 - 1	CCV18	5.1899	21301	PPB	SMPL	-7470A		20 Nov 2025 08:02:09
U	CCB18 - 1	CCB18	-0.0534	-110	PPB	SMPL	-7470A		20 Nov 2025 08:04:25