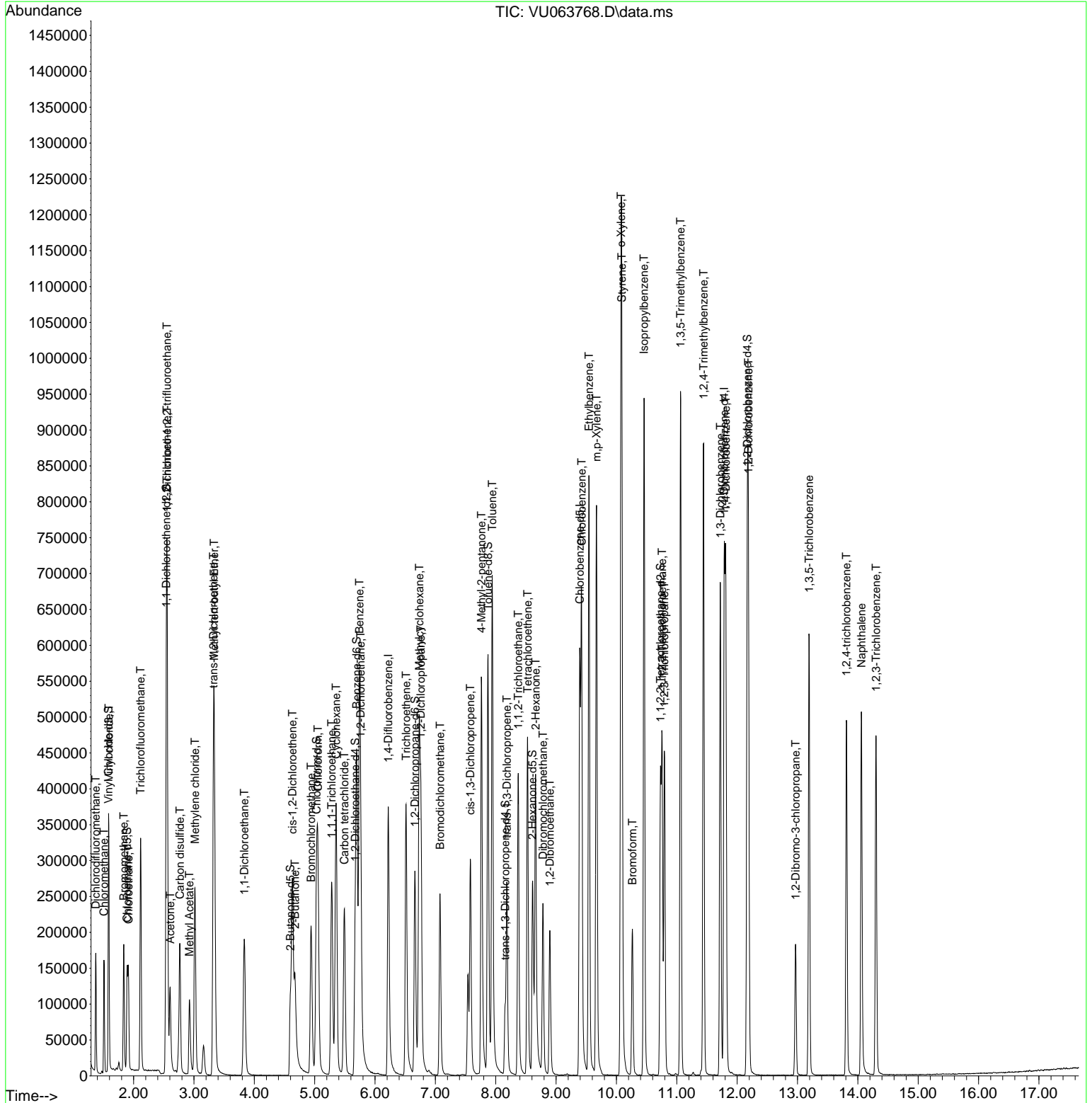
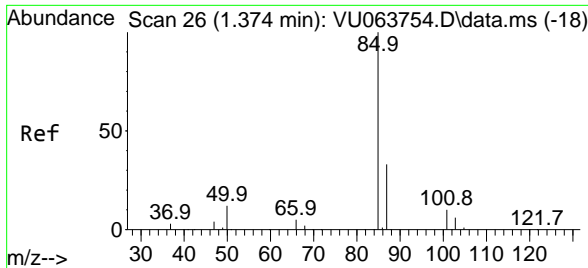


Data Path : Z:\voasrv\HPCHEM1\MSVOA_U\Data\VU112125\
 Data File : VU063768.D
 Acq On : 21 Nov 2025 14:33
 Operator : MD/SY
 Sample : Q3688-02MS
 Misc : 5.0mL/MSVOA_U/WATER
 ALS Vial : 17 Sample Multiplier: 1

Instrument :
 MSVOA_U
 Client Sampled :
 M-31SMS

Quant Time: Nov 21 22:31:07 2025
 Quant Method : Z:\voasrv\HPCHEM1\MSVOA_U\Method\SFAMULM111725WMA.M
 Quant Title : VOC Analysis
 QLast Update : Fri Nov 21 22:28:08 2025
 Response via : Initial Calibration

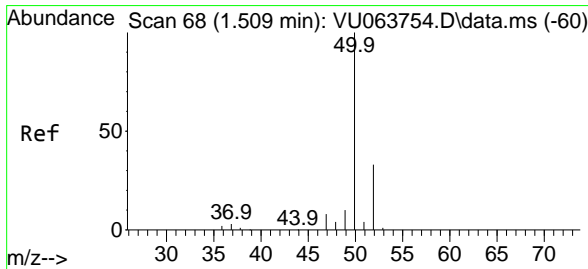
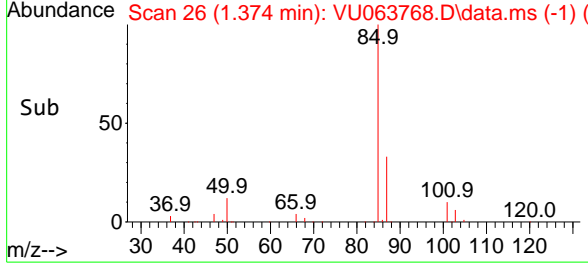
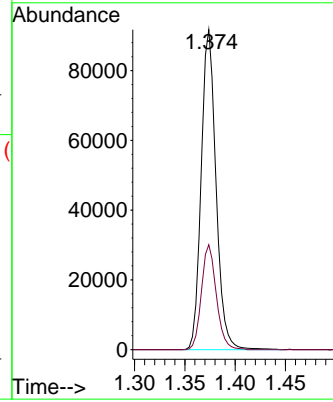
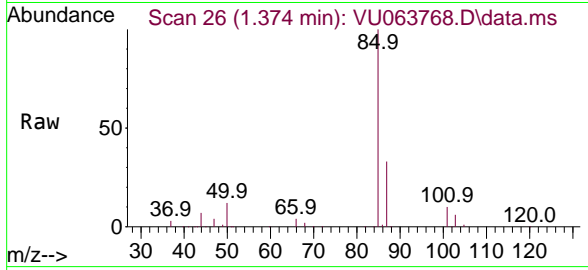




#2
 Dichlorodifluoromethane
 Concen: 49.901 ug/L
 RT: 1.374 min Scan# 26
 Delta R.T. -0.000 min
 Lab File: VU063768.D
 Acq: 21 Nov 2025 14:33

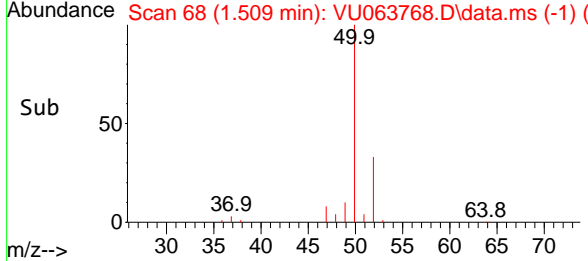
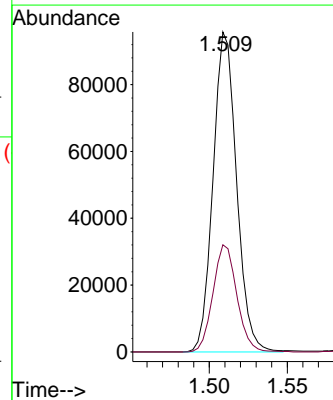
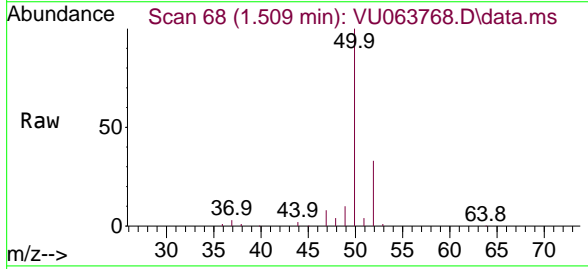
Instrument :
 MSVOA_U
 ClientSampled :
 M-31SMS

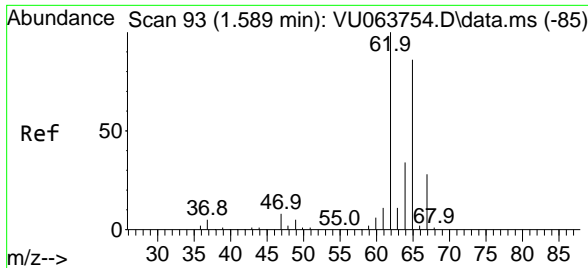
Tgt Ion: 85 Resp: 93824
 Ion Ratio Lower Upper
 85 100
 87 32.9 26.2 39.2



#3
 Chloromethane
 Concen: 47.213 ug/L
 RT: 1.509 min Scan# 68
 Delta R.T. -0.000 min
 Lab File: VU063768.D
 Acq: 21 Nov 2025 14:33

Tgt Ion: 50 Resp: 100439
 Ion Ratio Lower Upper
 50 100
 52 33.5 23.2 43.2

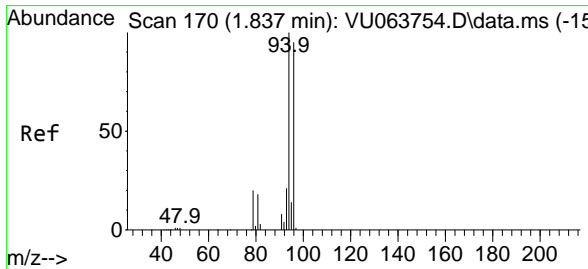
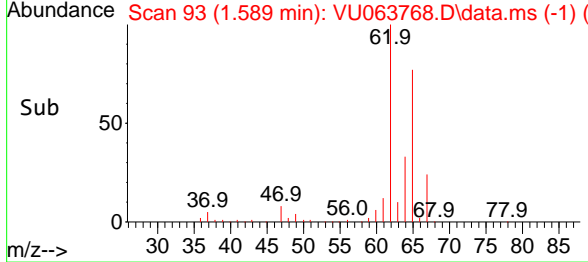
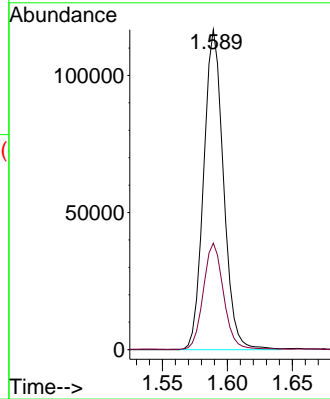
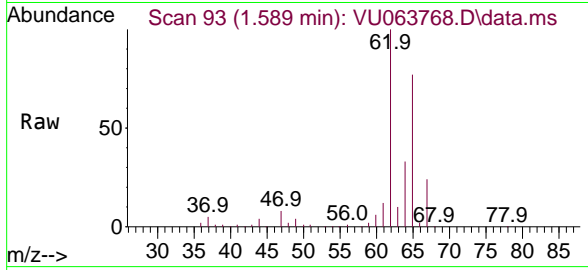




#5
 Vinyl chloride
 Concen: 49.955 ug/L
 RT: 1.589 min Scan# 93
 Delta R.T. -0.000 min
 Lab File: VU063768.D
 Acq: 21 Nov 2025 14:33

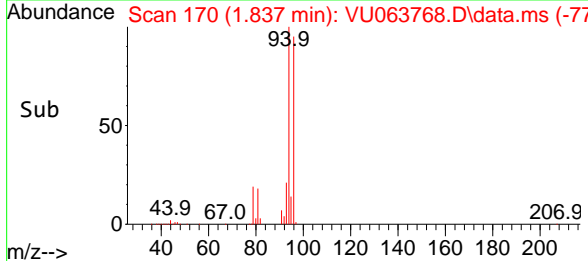
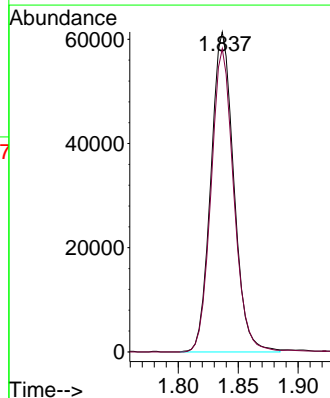
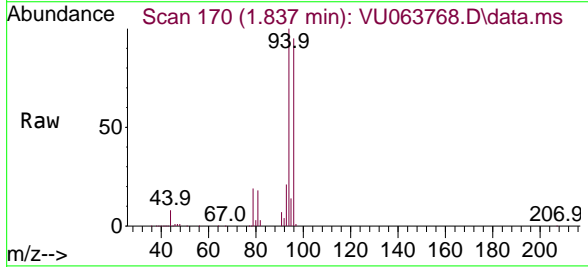
Instrument :
 MSVOA_U
 ClientSampled :
 M-31SMS

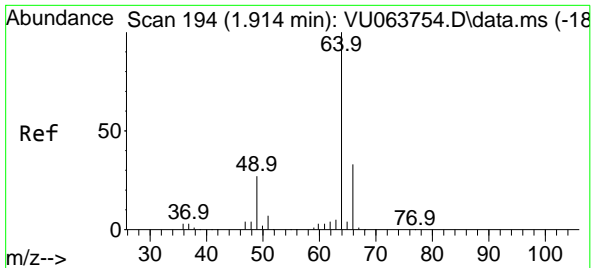
Tgt Ion: 62 Resp: 123564
 Ion Ratio Lower Upper
 62 100
 64 33.3 23.2 43.2



#6
 Bromomethane
 Concen: 52.211 ug/L
 RT: 1.837 min Scan# 170
 Delta R.T. -0.000 min
 Lab File: VU063768.D
 Acq: 21 Nov 2025 14:33

Tgt Ion: 94 Resp: 81841
 Ion Ratio Lower Upper
 94 100
 96 94.7 63.8 118.4

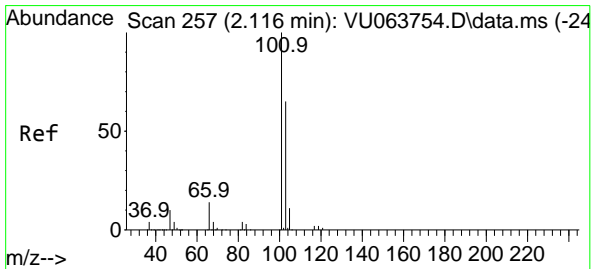
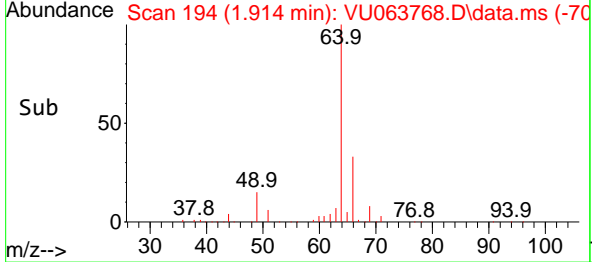
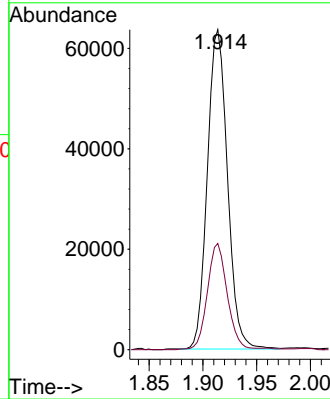
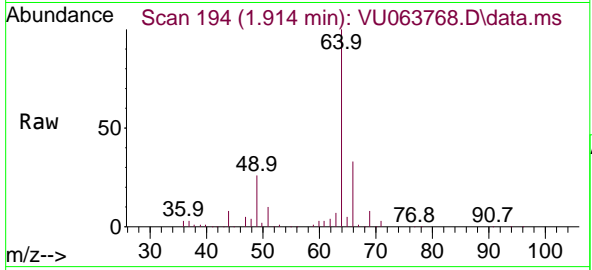




#8
 Chloroethane
 Concen: 50.145 ug/L
 RT: 1.914 min Scan# 194
 Delta R.T. -0.000 min
 Lab File: VU063768.D
 Acq: 21 Nov 2025 14:33

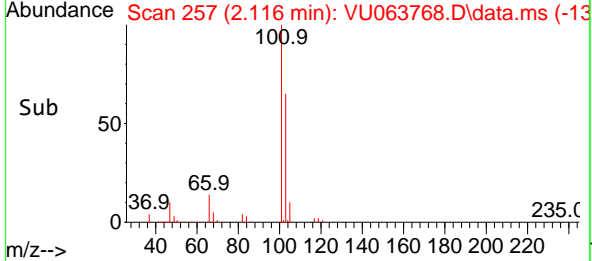
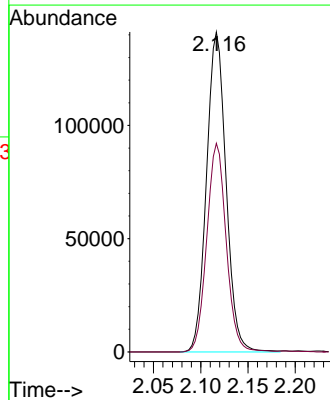
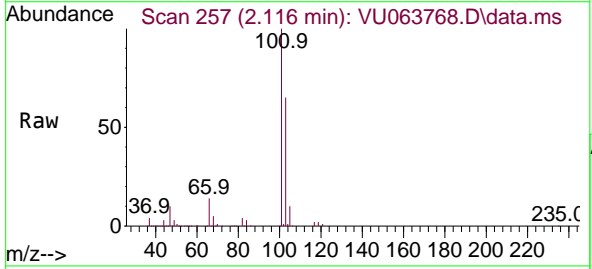
Instrument :
 MSVOA_U
 ClientSampled :
 M-31SMS

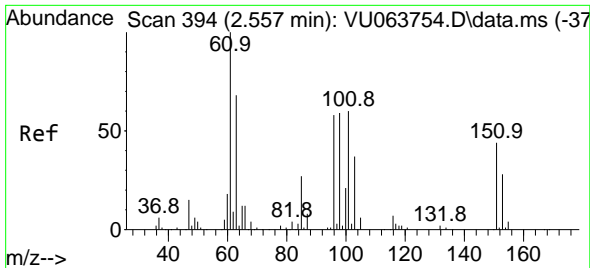
Tgt Ion: 64 Resp: 82792
 Ion Ratio Lower Upper
 64 100
 66 33.2 22.4 41.6



#9
 Trichlorofluoromethane
 Concen: 52.392 ug/L
 RT: 2.116 min Scan# 257
 Delta R.T. -0.000 min
 Lab File: VU063768.D
 Acq: 21 Nov 2025 14:33

Tgt Ion: 101 Resp: 204395
 Ion Ratio Lower Upper
 101 100
 103 64.8 52.0 78.0

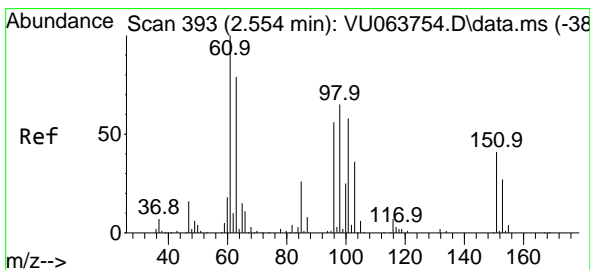
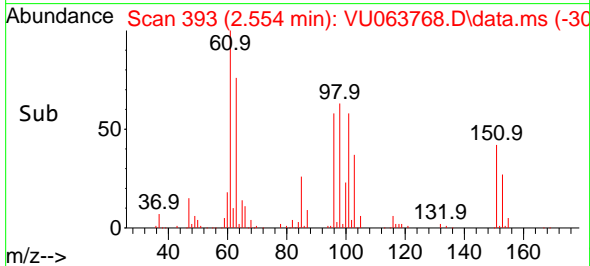
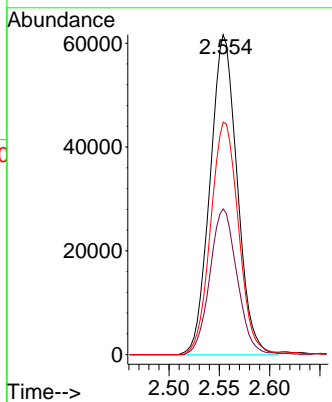
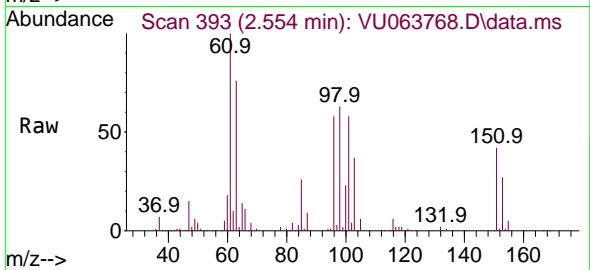




#10
 1,1,2-Trichloro-1,2,2-trifluoroethane
 Concen: 50.037 ug/L
 RT: 2.554 min Scan# 393
 Delta R.T. -0.003 min
 Lab File: VU063768.D
 Acq: 21 Nov 2025 14:33

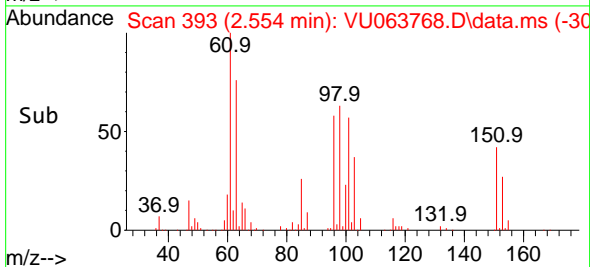
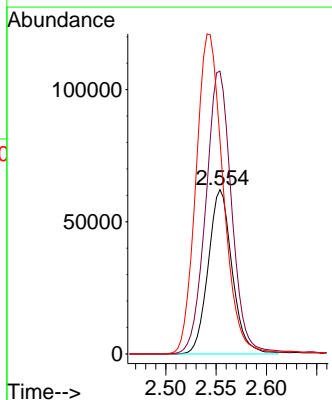
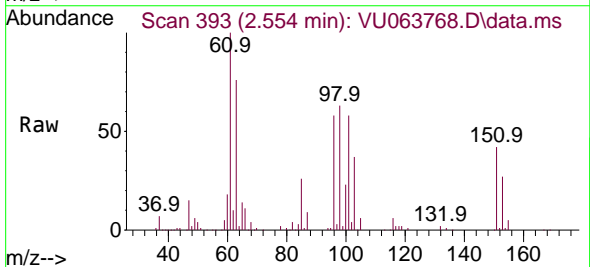
Instrument : MSVOA_U
 Client Sampled : M-31SMS

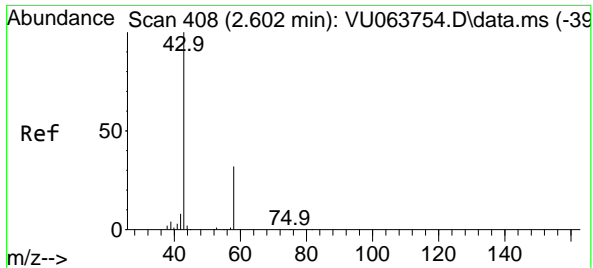
Tgt Ion	Resp	Lower	Upper
101	115376		
101	100		
85	45.7	36.3	54.5
151	74.8	60.1	90.1



#12
 1,1-Dichloroethene
 Concen: 48.657 ug/L
 RT: 2.554 min Scan# 393
 Delta R.T. -0.000 min
 Lab File: VU063768.D
 Acq: 21 Nov 2025 14:33

Tgt Ion	Resp	Lower	Upper
96	102611		
96	100		
61	172.2	123.3	228.9
63	130.3	103.3	191.8

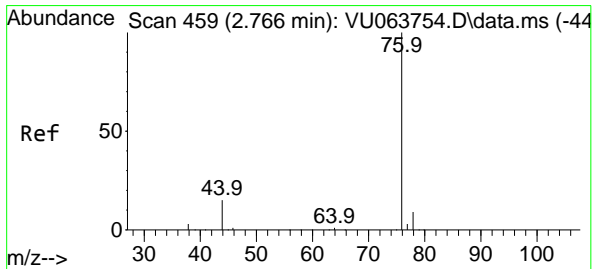
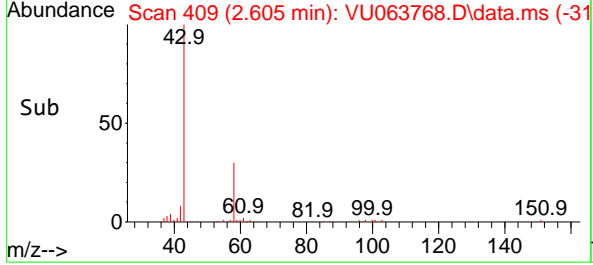
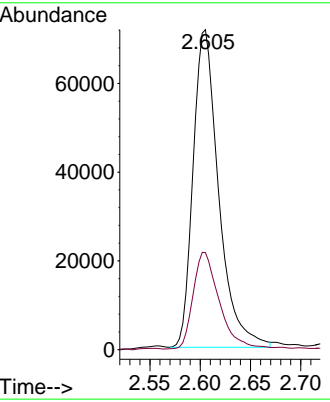
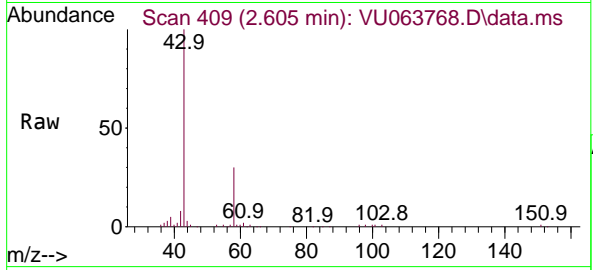




#13
 Acetone
 Concen: 58.924 ug/L
 RT: 2.605 min Scan# 409
 Delta R.T. 0.003 min
 Lab File: VU063768.D
 Acq: 21 Nov 2025 14:33

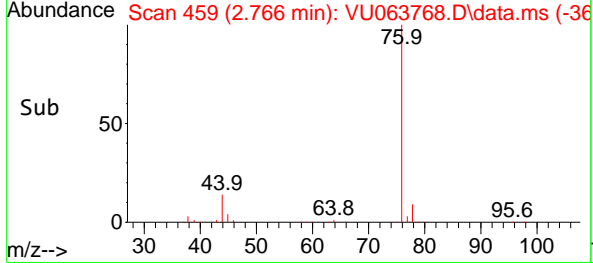
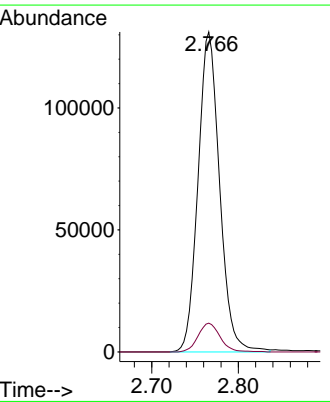
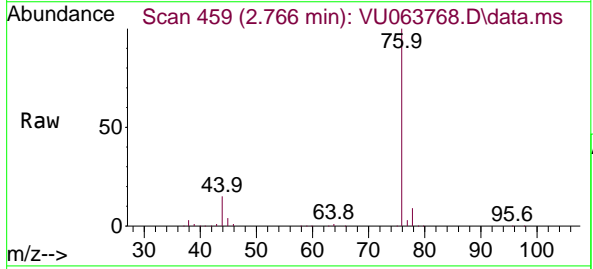
Instrument :
 MSVOA_U
 ClientSampled :
 M-31SMS

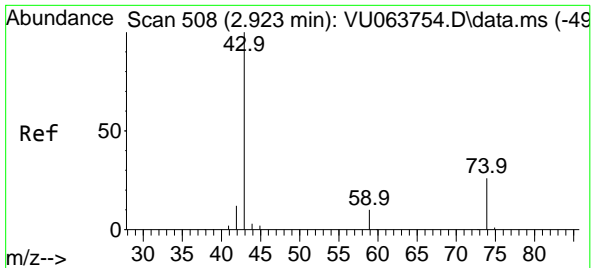
Tgt Ion: 43 Resp: 126830
 Ion Ratio Lower Upper
 43 100
 58 31.2 0.0 63.4



#14
 Carbon disulfide
 Concen: 41.284 ug/L
 RT: 2.766 min Scan# 459
 Delta R.T. -0.000 min
 Lab File: VU063768.D
 Acq: 21 Nov 2025 14:33

Tgt Ion: 76 Resp: 226780
 Ion Ratio Lower Upper
 76 100
 78 9.0 7.8 11.6

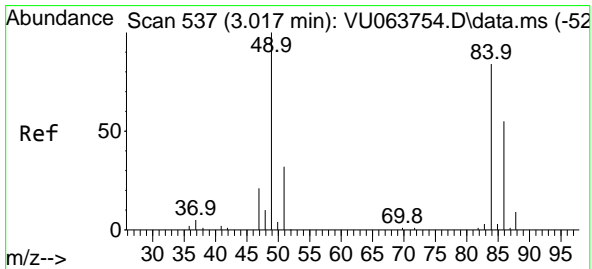
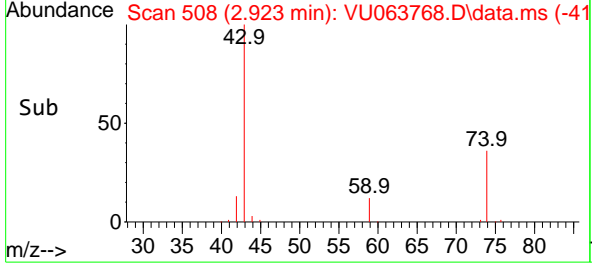
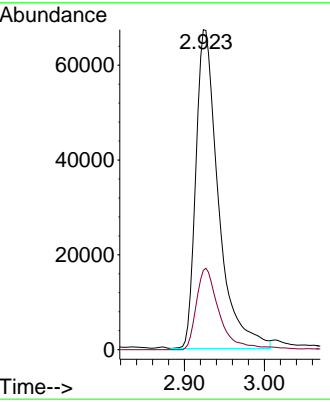
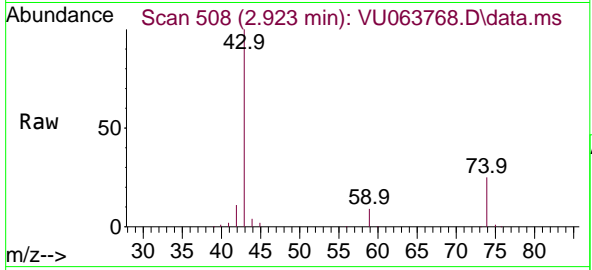




#15
Methyl Acetate
Concen: 51.139 ug/L
RT: 2.923 min Scan# 508
Delta R.T. -0.000 min
Lab File: VU063768.D
Acq: 21 Nov 2025 14:33

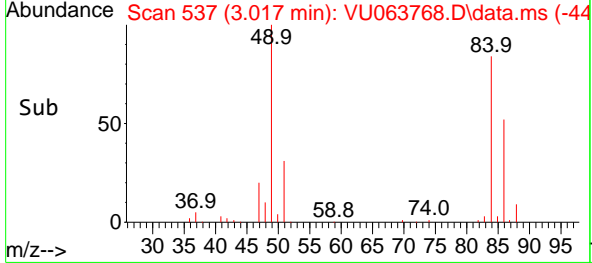
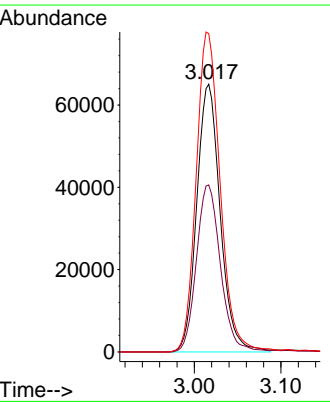
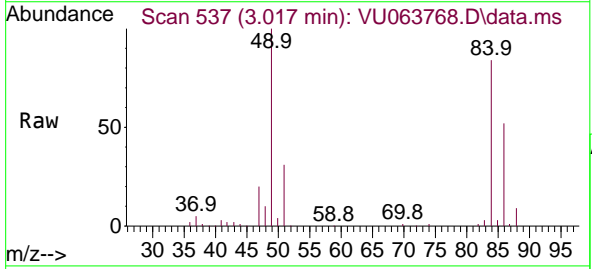
Instrument : MSVOA_U
ClientSampled : M-31SMS

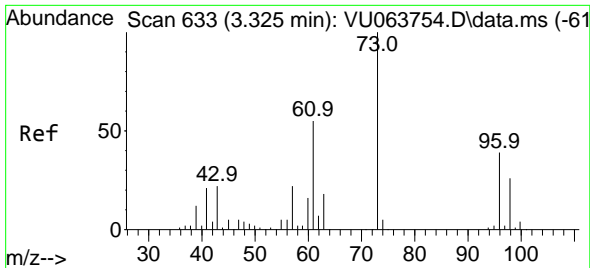
Tgt Ion: 43 Resp: 132180
Ion Ratio Lower Upper
43 100
74 25.3 20.5 30.7



#16
Methylene chloride
Concen: 49.853 ug/L
RT: 3.017 min Scan# 537
Delta R.T. -0.000 min
Lab File: VU063768.D
Acq: 21 Nov 2025 14:33

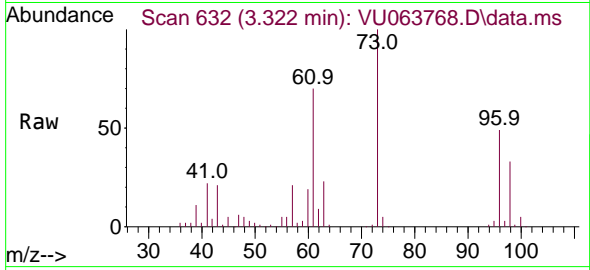
Tgt Ion: 84 Resp: 122560
Ion Ratio Lower Upper
84 100
86 62.4 45.2 84.0
49 118.8 83.6 155.2





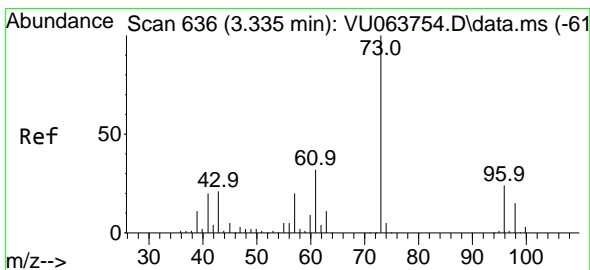
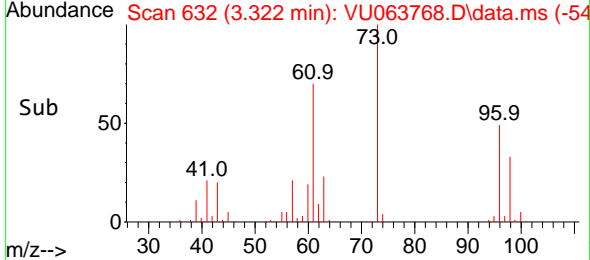
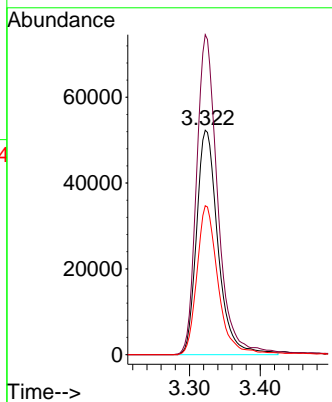
#17
 trans-1,2-Dichloroethene
 Concen: 48.913 ug/L
 RT: 3.322 min Scan# 632
 Delta R.T. -0.003 min
 Lab File: VU063768.D
 Acq: 21 Nov 2025 14:33

Instrument : MSVOA_U
 ClientSampled : M-31SMS

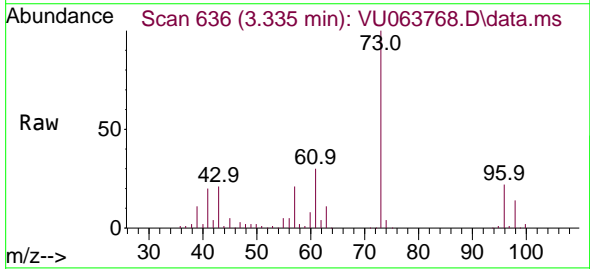


Tgt Ion: 96 Resp: 109976

Ion	Ratio	Lower	Upper
96	100		
61	142.6	92.7	172.1
98	66.3	43.2	80.2

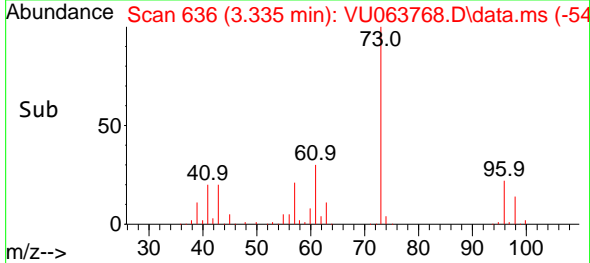
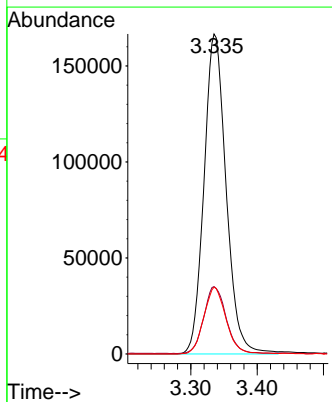


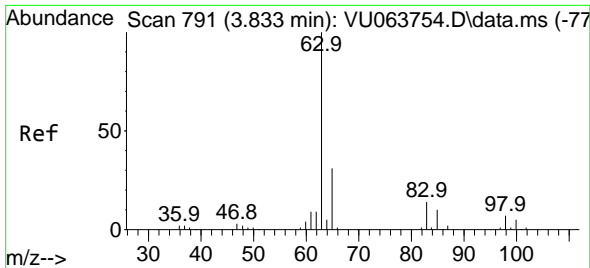
#18
 Methyl tert-butyl Ether
 Concen: 50.651 ug/L
 RT: 3.335 min Scan# 636
 Delta R.T. -0.000 min
 Lab File: VU063768.D
 Acq: 21 Nov 2025 14:33



Tgt Ion: 73 Resp: 385418

Ion	Ratio	Lower	Upper
73	100		
43	21.0	16.6	24.8
57	20.8	16.3	24.5

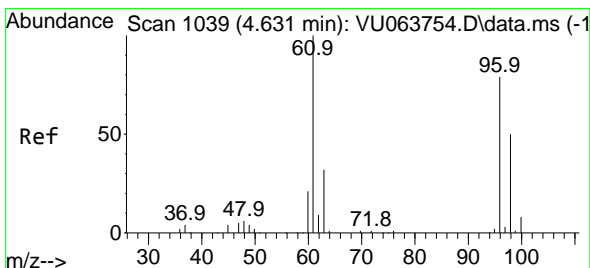
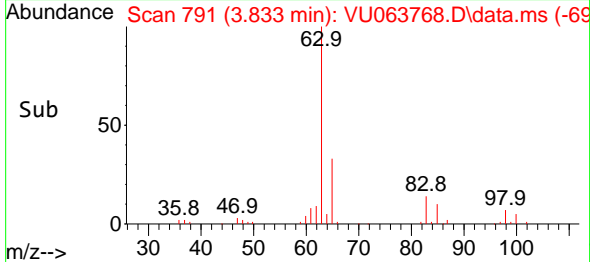
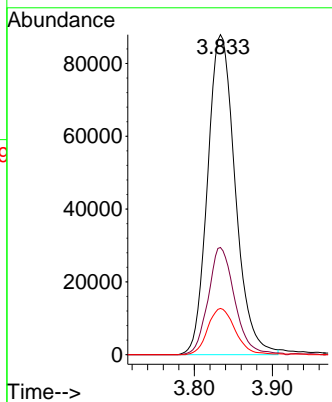
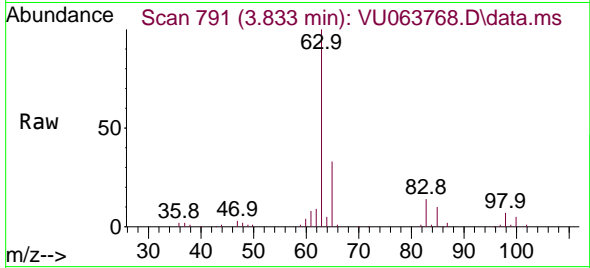




#19
 1,1-Dichloroethane
 Concen: 50.033 ug/L
 RT: 3.833 min Scan# 791
 Delta R.T. -0.000 min
 Lab File: VU063768.D
 Acq: 21 Nov 2025 14:33

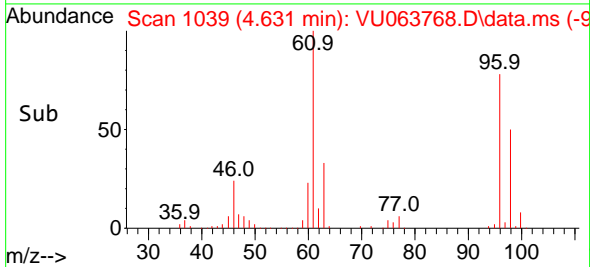
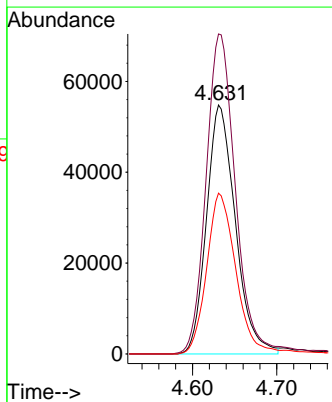
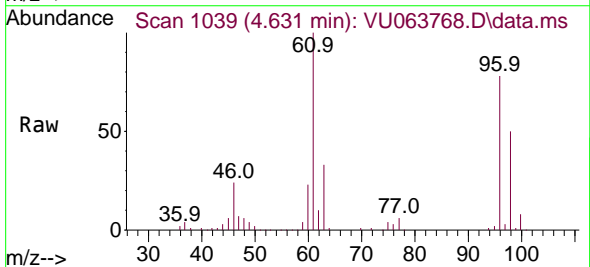
Instrument : MSVOA_U
 ClientSampled : M-31SMS

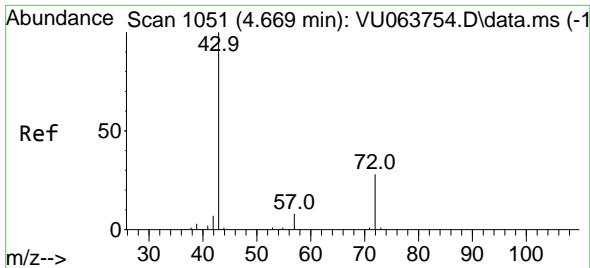
Tgt Ion	Resp	Lower	Upper
63	100		
65	33.5	22.0	41.0
83	14.4	9.5	17.7



#20
 cis-1,2-Dichloroethene
 Concen: 50.453 ug/L
 RT: 4.631 min Scan# 1039
 Delta R.T. -0.000 min
 Lab File: VU063768.D
 Acq: 21 Nov 2025 14:33

Tgt Ion	Resp	Lower	Upper
96	100		
61	128.6	90.3	167.7
98	64.6	46.3	86.1

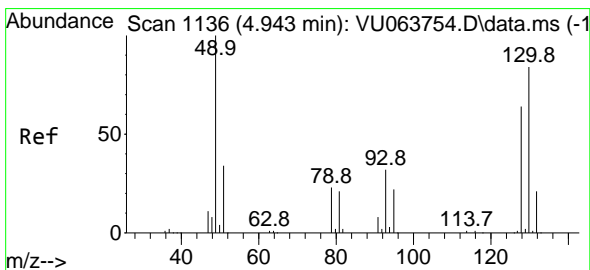
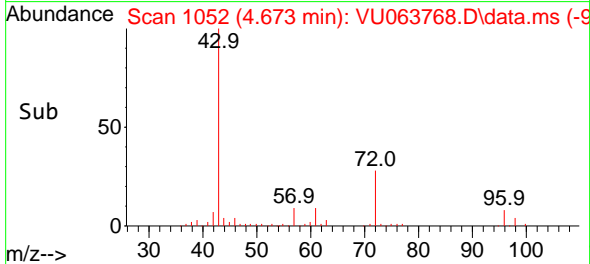
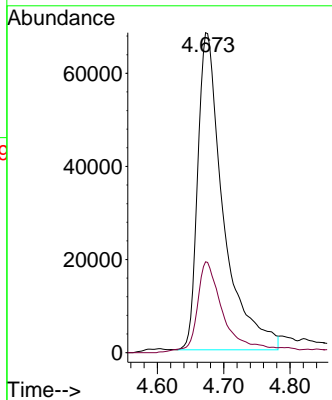
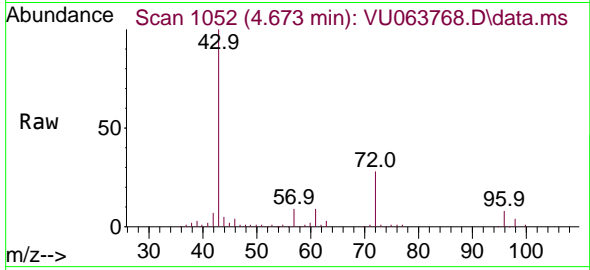




#22
 2-Butanone
 Concen: 76.284 ug/L
 RT: 4.673 min Scan# 1052
 Delta R.T. 0.003 min
 Lab File: VU063768.D
 Acq: 21 Nov 2025 14:33

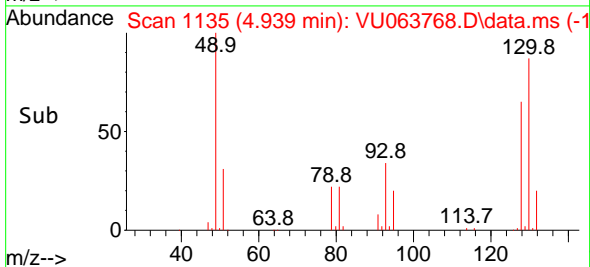
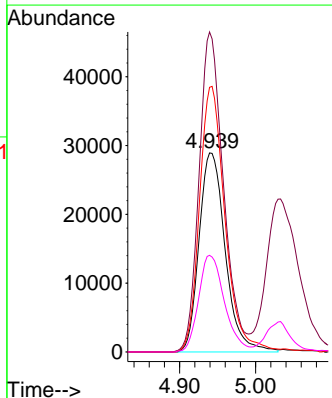
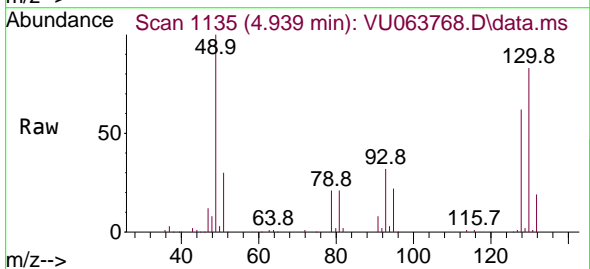
Instrument :
 MSVOA_U
ClientSampled :
 M-31SMS

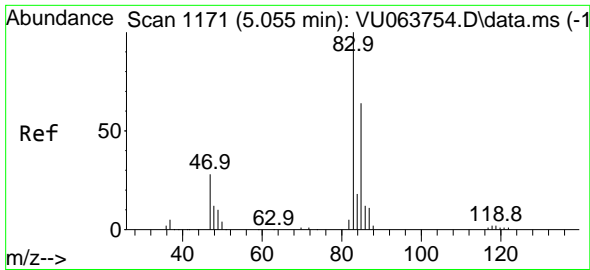
Tgt Ion: 43 Resp: 182417
 Ion Ratio Lower Upper
 43 100
 72 27.8 13.6 40.7



#23
 Bromochloromethane
 Concen: 51.875 ug/L
 RT: 4.939 min Scan# 1135
 Delta R.T. -0.003 min
 Lab File: VU063768.D
 Acq: 21 Nov 2025 14:33

Tgt Ion:128 Resp: 69024
 Ion Ratio Lower Upper
 128 100
 49 160.8 113.5 210.7
 130 133.0 89.8 166.8
 51 48.5 39.7 59.5

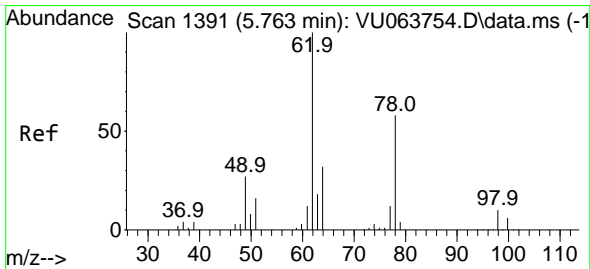
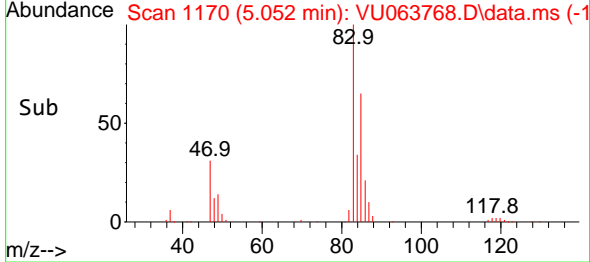
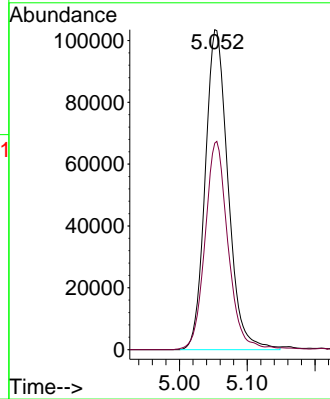
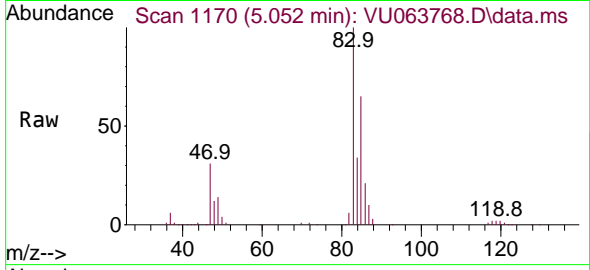




#25
 Chloroform
 Concen: 51.654 ug/L
 RT: 5.052 min Scan# 1170
 Delta R.T. -0.003 min
 Lab File: VU063768.D
 Acq: 21 Nov 2025 14:33

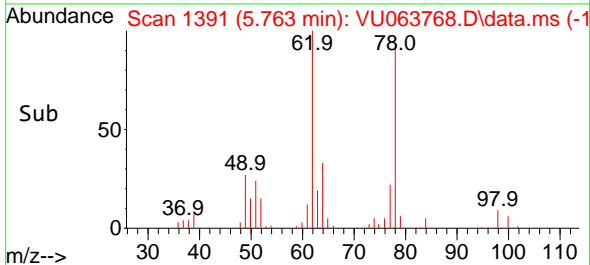
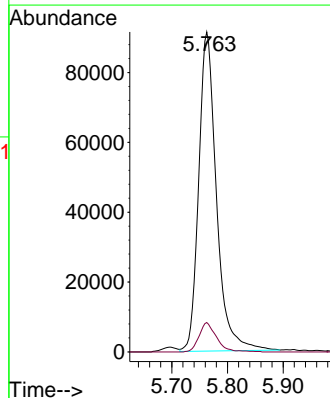
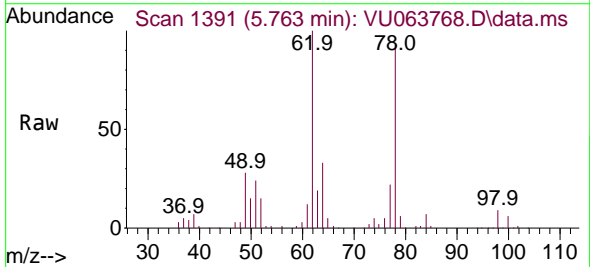
Instrument :
 MSVOA_U
 ClientSampled :
 M-31SMS

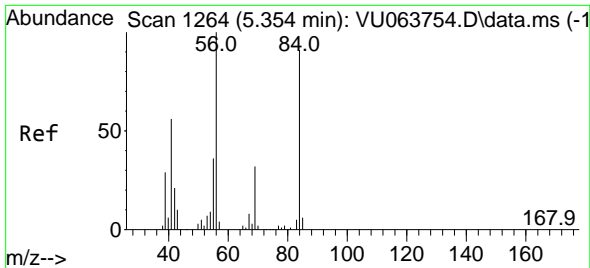
Tgt Ion: 83 Resp: 242236
 Ion Ratio Lower Upper
 83 100
 85 64.5 45.4 84.4



#27
 1,2-Dichloroethane
 Concen: 52.813 ug/L
 RT: 5.763 min Scan# 1391
 Delta R.T. -0.000 min
 Lab File: VU063768.D
 Acq: 21 Nov 2025 14:33

Tgt Ion: 62 Resp: 202185
 Ion Ratio Lower Upper
 62 100
 98 9.2 7.6 11.4

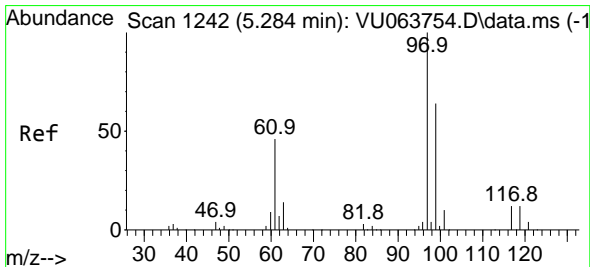
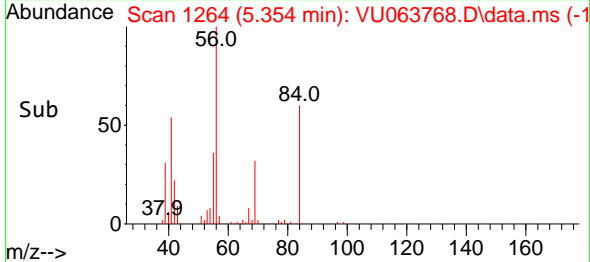
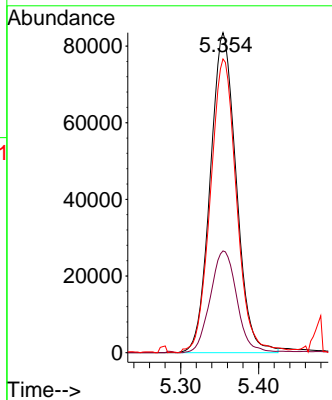
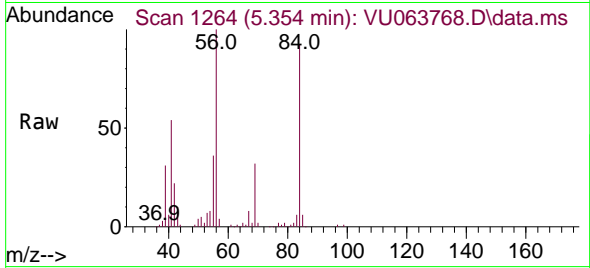




#29
 Cyclohexane
 Concen: 47.541 ug/L
 RT: 5.354 min Scan# 1264
 Delta R.T. -0.000 min
 Lab File: VU063768.D
 Acq: 21 Nov 2025 14:33

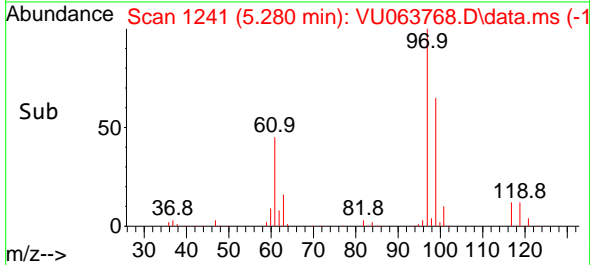
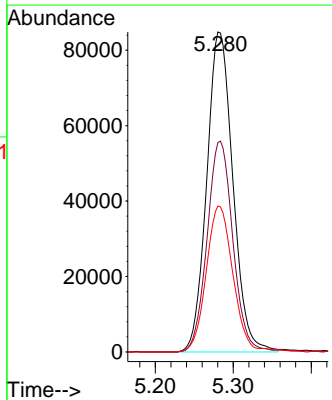
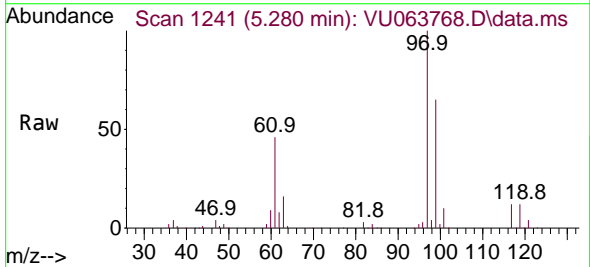
Instrument :
 MSVOA_U
 ClientSampled :
 M-31SMS

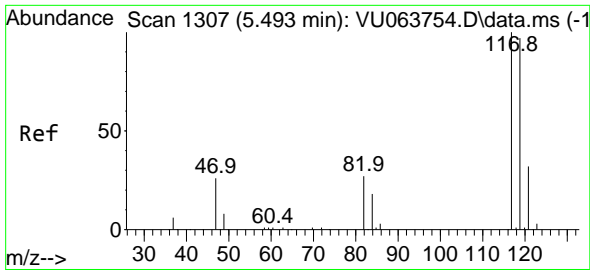
Tgt Ion	Resp	Lower	Upper
56	193150		
56	100		
69	32.4	25.8	38.8
84	92.4	69.3	103.9



#30
 1,1,1-Trichloroethane
 Concen: 48.012 ug/L
 RT: 5.280 min Scan# 1241
 Delta R.T. -0.003 min
 Lab File: VU063768.D
 Acq: 21 Nov 2025 14:33

Tgt Ion	Resp	Lower	Upper
97	197970		
97	100		
99	64.8	50.7	76.1
61	45.9	37.2	55.8

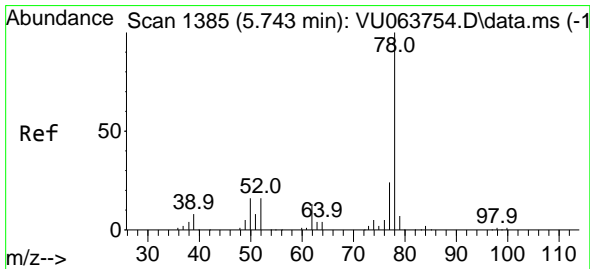
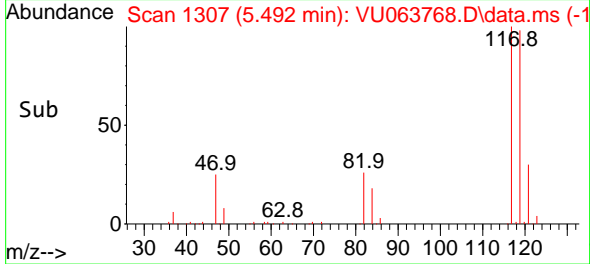
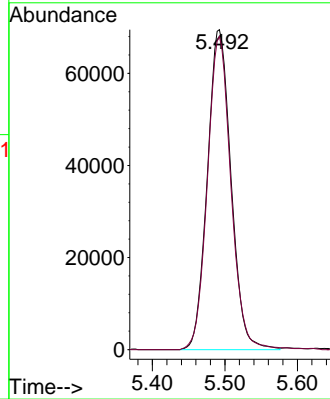
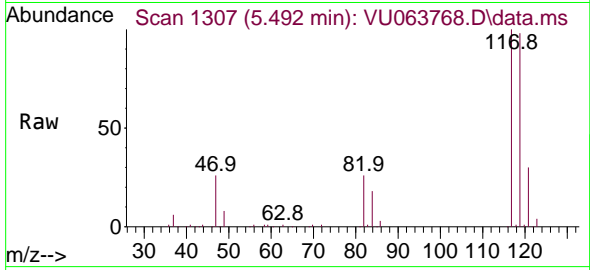




#31
 Carbon tetrachloride
 Concen: 48.707 ug/L
 RT: 5.492 min Scan# 1307
 Delta R.T. -0.000 min
 Lab File: VU063768.D
 Acq: 21 Nov 2025 14:33

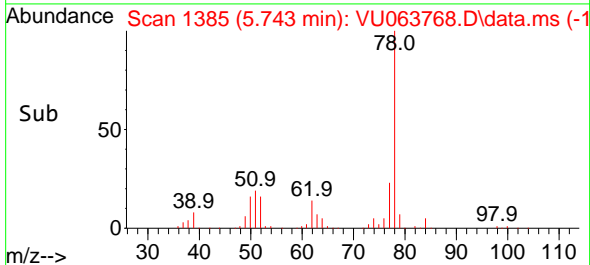
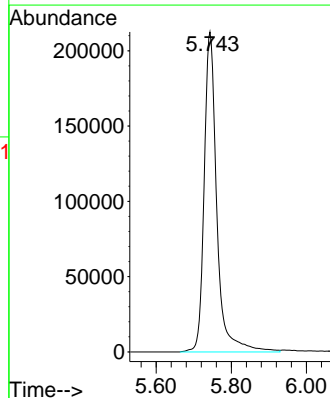
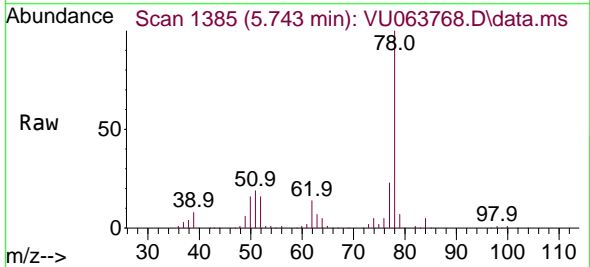
Instrument :
 MSVOA_U
 ClientSampled :
 M-31SMS

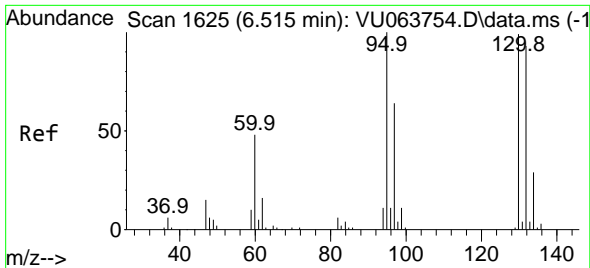
Tgt Ion:117 Resp: 157922
 Ion Ratio Lower Upper
 117 100
 119 96.9 76.0 114.0



#33
 Benzene
 Concen: 50.410 ug/L
 RT: 5.743 min Scan# 1385
 Delta R.T. -0.000 min
 Lab File: VU063768.D
 Acq: 21 Nov 2025 14:33

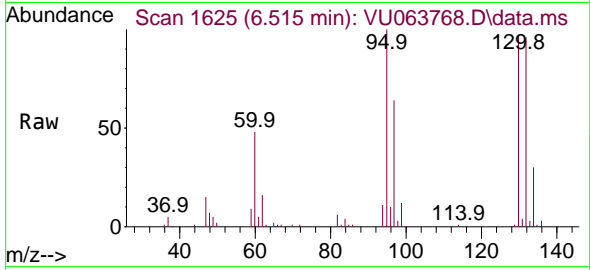
Tgt Ion: 78 Resp: 496473





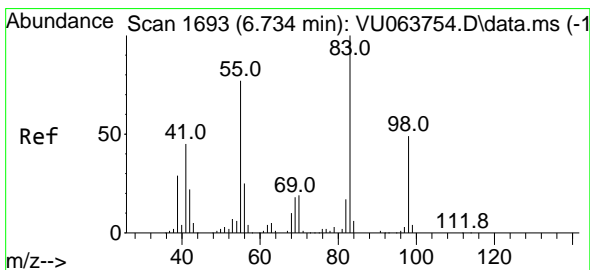
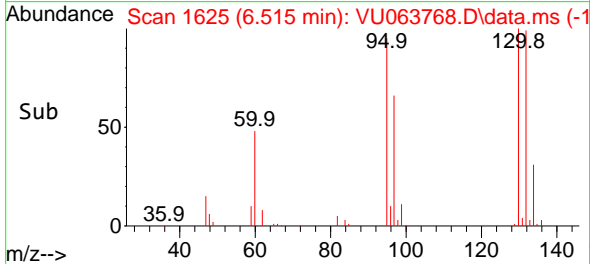
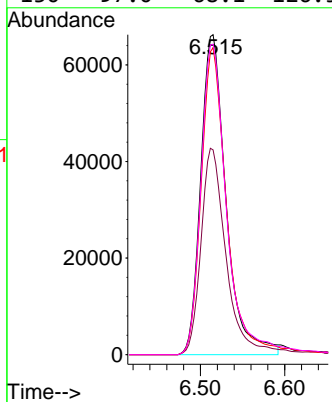
#34
 Trichloroethene
 Concen: 48.741 ug/L
 RT: 6.515 min Scan# 1625
 Delta R.T. -0.000 min
 Lab File: VU063768.D
 Acq: 21 Nov 2025 14:33

Instrument :
 MSVOA_U
 ClientSampled :
 M-31SMS

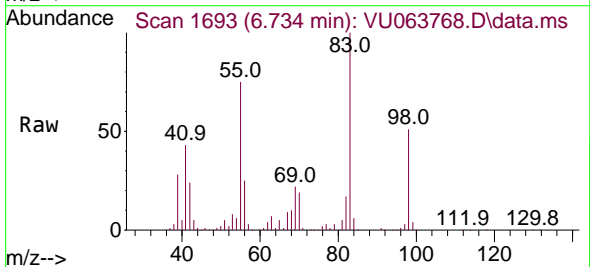


Tgt Ion: 95 Resp: 138387

Ion	Ratio	Lower	Upper
95	100		
97	64.0	45.1	83.9
132	95.9	68.3	126.8
130	97.0	68.1	126.5

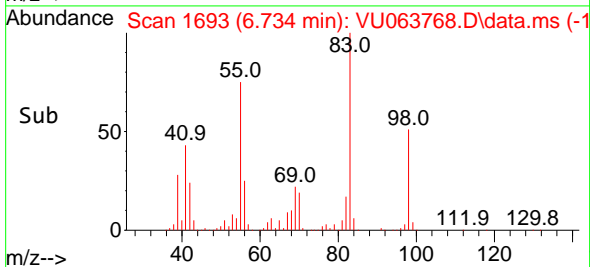
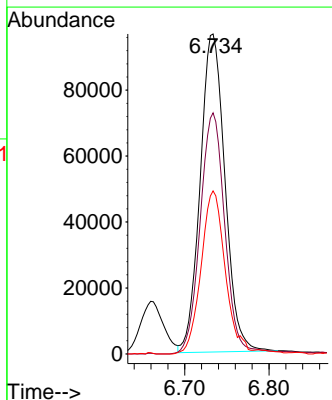


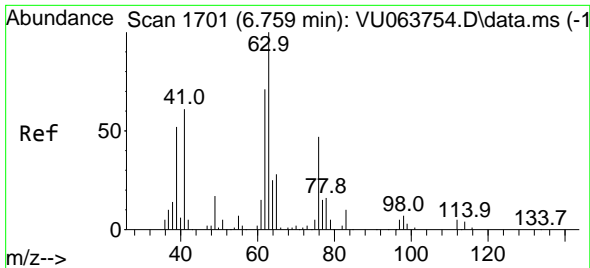
#35
 Methylcyclohexane
 Concen: 47.233 ug/L
 RT: 6.734 min Scan# 1693
 Delta R.T. -0.000 min
 Lab File: VU063768.D
 Acq: 21 Nov 2025 14:33



Tgt Ion: 83 Resp: 196861

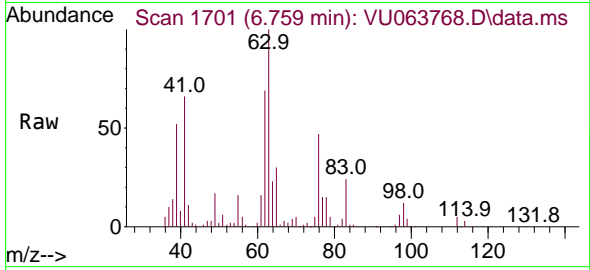
Ion	Ratio	Lower	Upper
83	100		
55	75.6	60.9	91.3
98	49.8	39.7	59.5



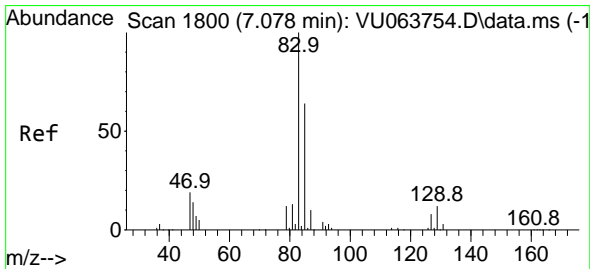
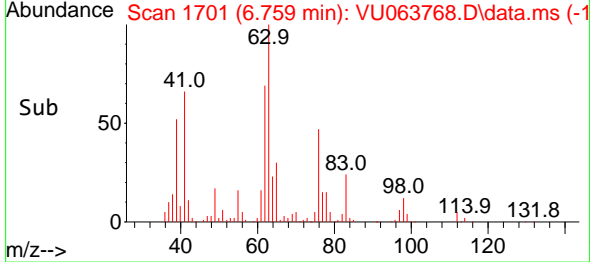
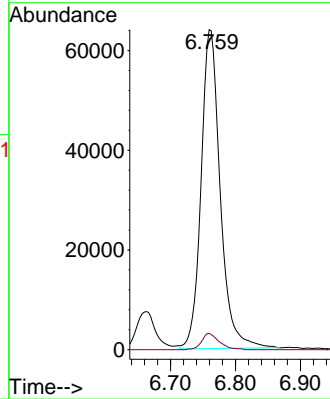


#37
 1,2-Dichloropropane
 Concen: 51.051 ug/L
 RT: 6.759 min Scan# 1701
 Delta R.T. -0.000 min
 Lab File: VU063768.D
 Acq: 21 Nov 2025 14:33

Instrument :
 MSVOA_U
 ClientSampled :
 M-31SMS

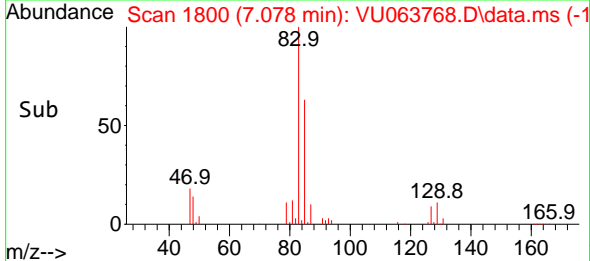
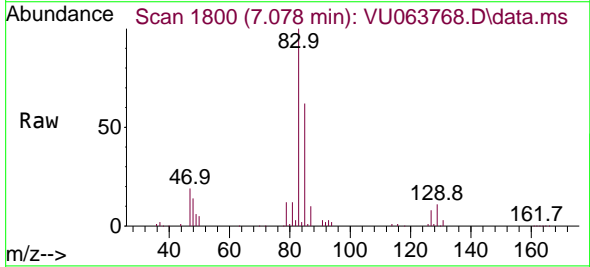
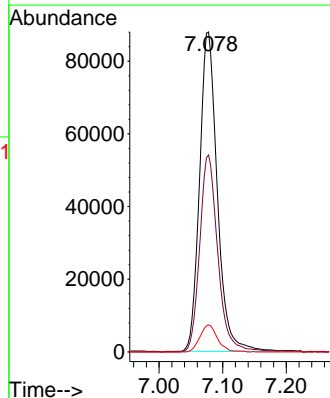


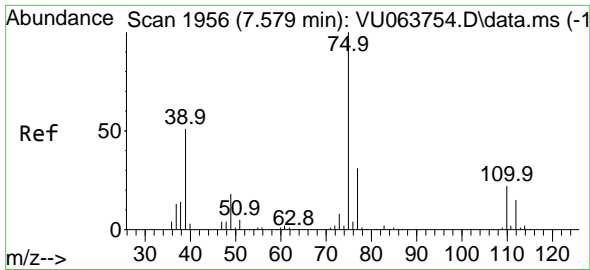
Tgt Ion: 63 Resp: 130666
 Ion Ratio Lower Upper
 63 100
 112 4.6 3.7 5.5



#38
 Bromodichloromethane
 Concen: 48.625 ug/L
 RT: 7.078 min Scan# 1800
 Delta R.T. -0.000 min
 Lab File: VU063768.D
 Acq: 21 Nov 2025 14:33

Tgt Ion: 83 Resp: 170425
 Ion Ratio Lower Upper
 83 100
 85 61.5 43.1 80.1
 127 9.2 6.6 10.0

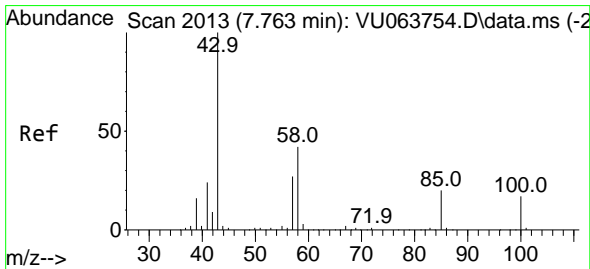
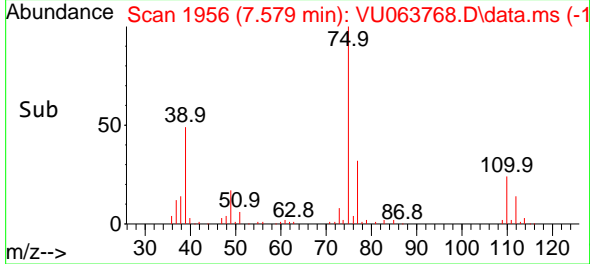
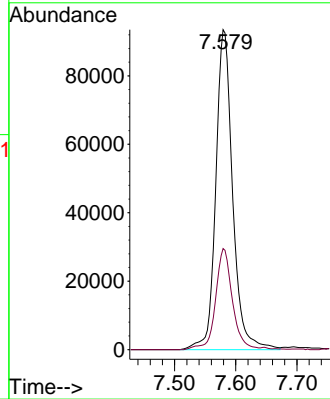
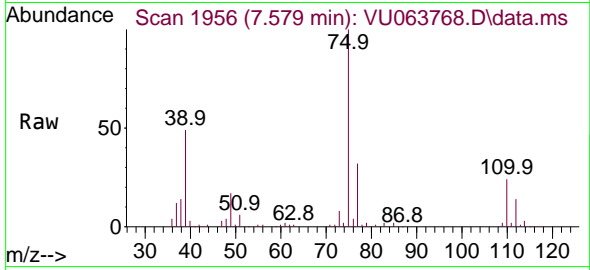




#39
 cis-1,3-Dichloropropene
 Concen: 47.203 ug/L
 RT: 7.579 min Scan# 1956
 Delta R.T. -0.000 min
 Lab File: VU063768.D
 Acq: 21 Nov 2025 14:33

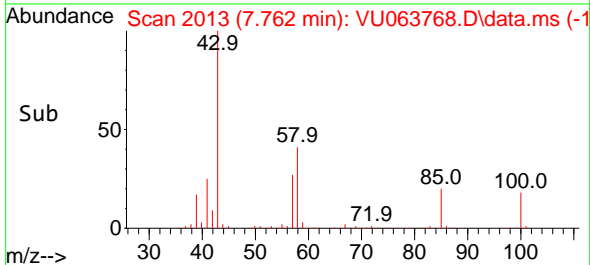
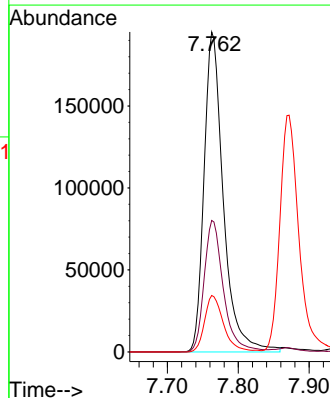
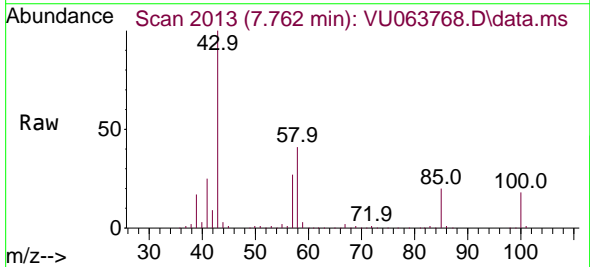
Instrument :
 MSVOA_U
ClientSampled :
 M-31SMS

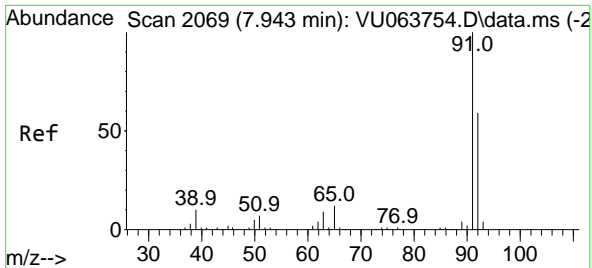
Tgt Ion: 75 Resp: 179172
 Ion Ratio Lower Upper
 75 100
 77 31.6 22.1 41.1



#40
 4-Methyl-2-pentanone
 Concen: 99.682 ug/L
 RT: 7.762 min Scan# 2013
 Delta R.T. -0.000 min
 Lab File: VU063768.D
 Acq: 21 Nov 2025 14:33

Tgt Ion: 43 Resp: 369297
 Ion Ratio Lower Upper
 43 100
 58 40.9 32.9 49.3
 100 17.2 13.9 20.9

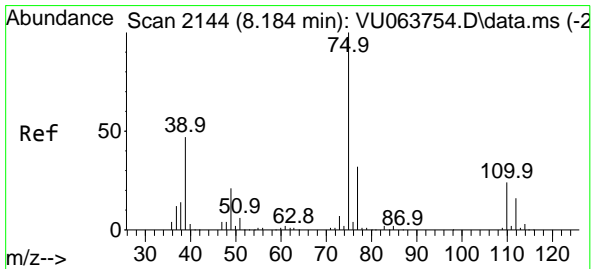
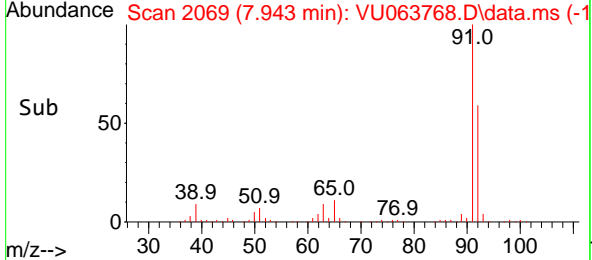
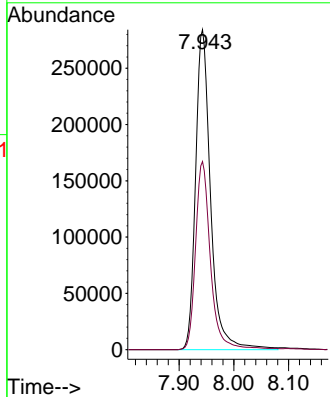
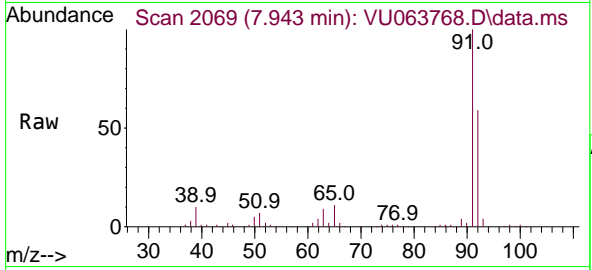




#42
 Toluene
 Concen: 49.795 ug/L
 RT: 7.943 min Scan# 2069
 Delta R.T. -0.000 min
 Lab File: VU063768.D
 Acq: 21 Nov 2025 14:33

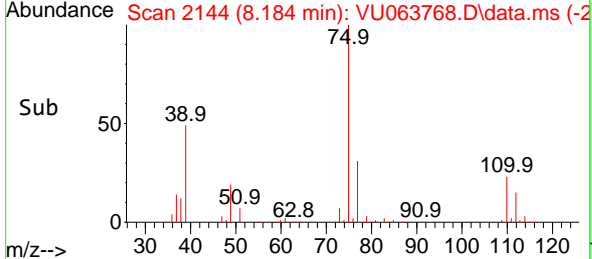
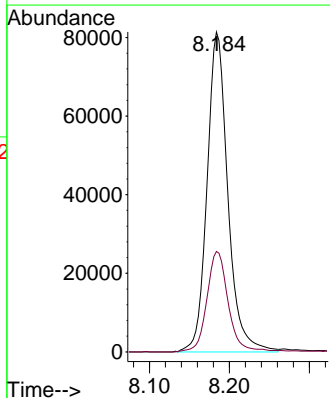
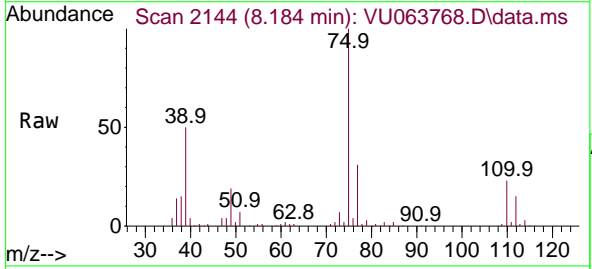
Instrument : MSVOA_U
 ClientSampled : M-31SMS

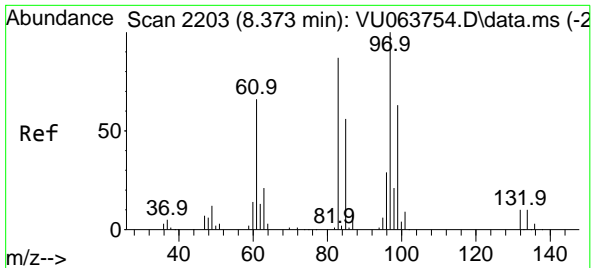
Tgt Ion: 91 Resp: 541426
 Ion Ratio Lower Upper
 91 100
 92 58.8 41.2 76.4



#44
 trans-1,3-Dichloropropene
 Concen: 44.351 ug/L
 RT: 8.184 min Scan# 2144
 Delta R.T. -0.000 min
 Lab File: VU063768.D
 Acq: 21 Nov 2025 14:33

Tgt Ion: 75 Resp: 146953
 Ion Ratio Lower Upper
 75 100
 77 31.4 21.4 39.8



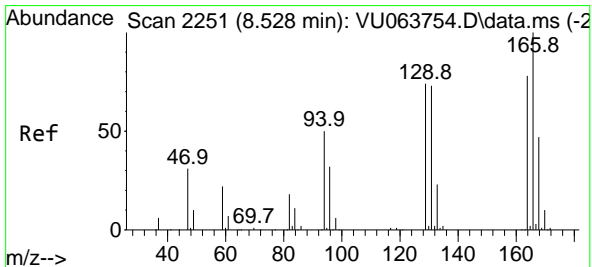
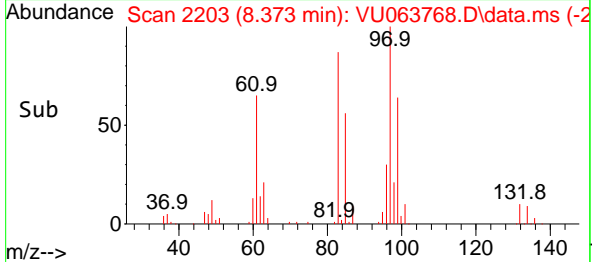
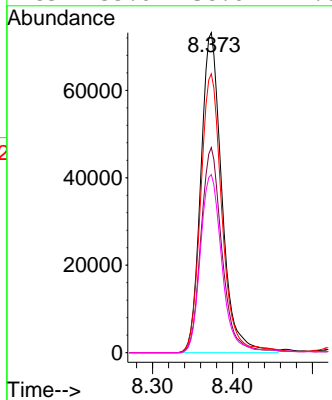
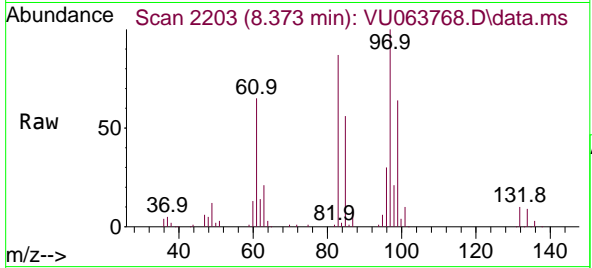


#45
 1,1,2-Trichloroethane
 Concen: 49.271 ug/L
 RT: 8.373 min Scan# 2203
 Delta R.T. -0.000 min
 Lab File: VU063768.D
 Acq: 21 Nov 2025 14:33

Instrument :
 MSVOA_U
 ClientSampled :
 M-31SMS

Tgt Ion: 97 Resp: 133367

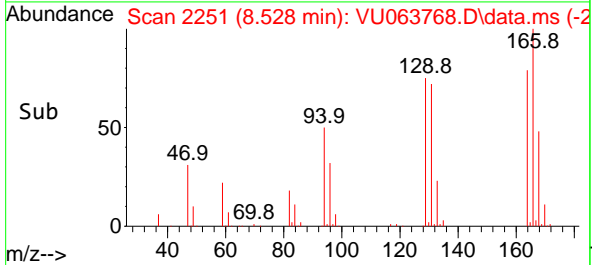
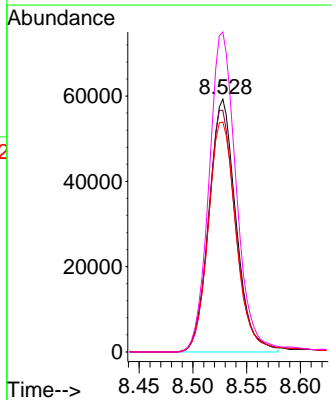
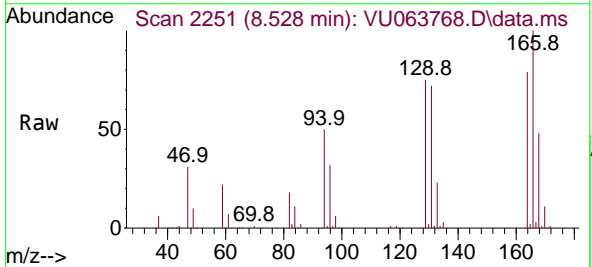
Ion	Ratio	Lower	Upper
97	100		
99	64.1	43.7	81.1
83	87.1	59.7	110.9
85	55.6	38.6	71.6

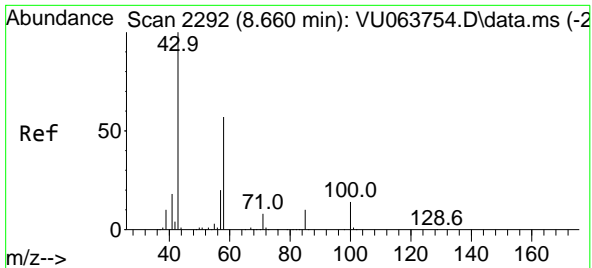


#46
 Tetrachloroethene
 Concen: 47.689 ug/L
 RT: 8.528 min Scan# 2251
 Delta R.T. -0.000 min
 Lab File: VU063768.D
 Acq: 21 Nov 2025 14:33

Tgt Ion: 164 Resp: 103546

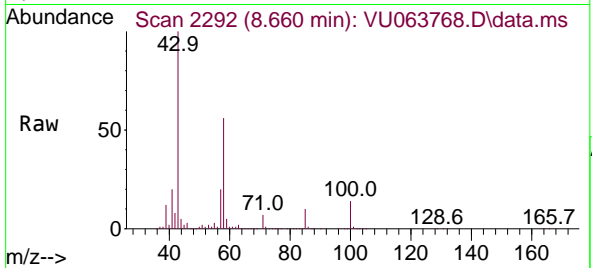
Ion	Ratio	Lower	Upper
164	100		
129	95.6	68.5	127.3
131	91.0	64.3	119.3
166	126.6	89.5	166.1





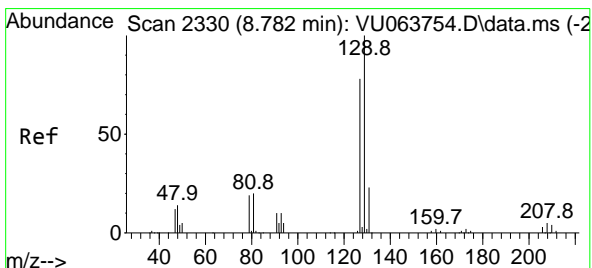
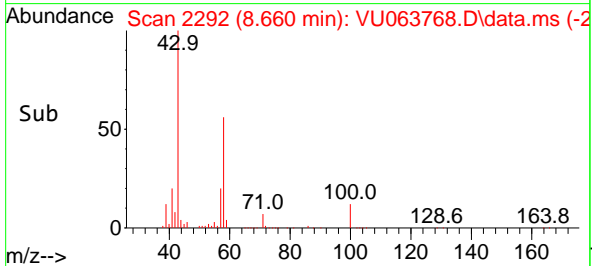
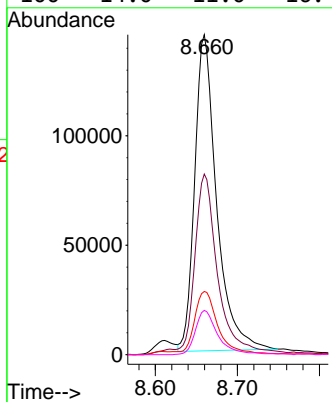
#48
 2-Hexanone
 Concen: 92.429 ug/L
 RT: 8.660 min Scan# 2292
 Delta R.T. -0.000 min
 Lab File: VU063768.D
 Acq: 21 Nov 2025 14:33

Instrument :
 MSVOA_U
 ClientSampled :
 M-31SMS

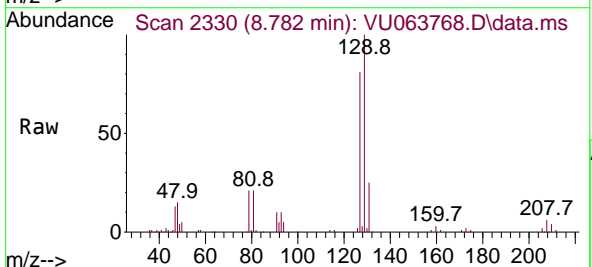


Tgt Ion: 43 Resp: 268767

Ion	Ratio	Lower	Upper
43	100		
58	59.1	44.8	67.2
57	19.9	16.6	24.8
100	14.0	11.0	16.4

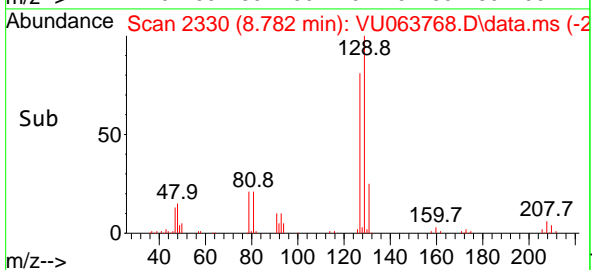
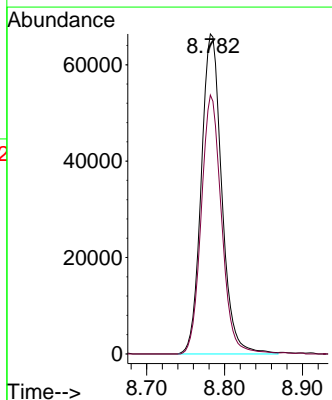


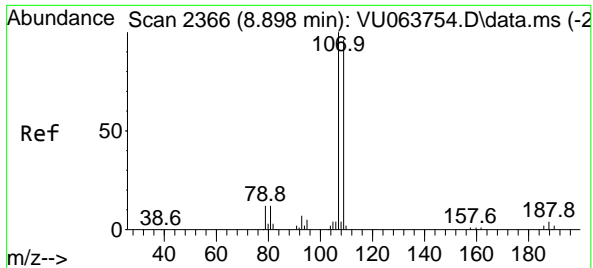
#49
 Dibromochloromethane
 Concen: 46.452 ug/L
 RT: 8.782 min Scan# 2330
 Delta R.T. -0.000 min
 Lab File: VU063768.D
 Acq: 21 Nov 2025 14:33



Tgt Ion: 129 Resp: 121427

Ion	Ratio	Lower	Upper
129	100		
127	80.9	53.4	99.2

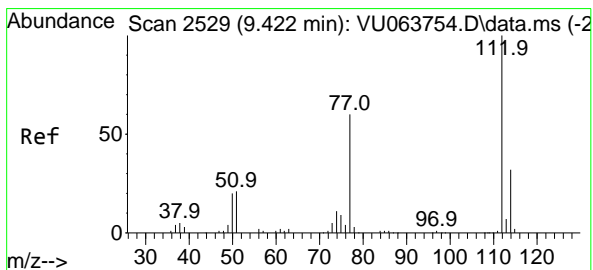
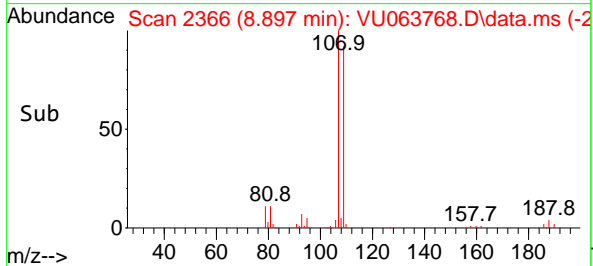
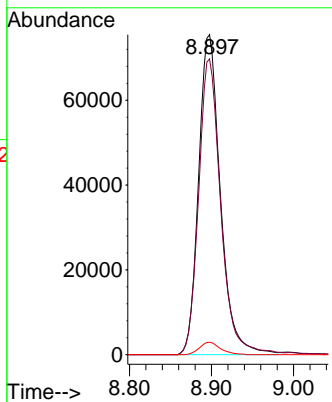
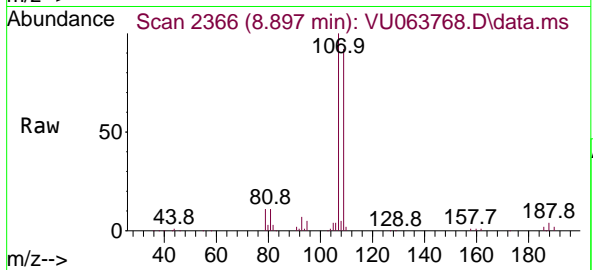




#50
 1,2-Dibromoethane
 Concen: 49.053 ug/L
 RT: 8.897 min Scan# 2366
 Delta R.T. -0.000 min
 Lab File: VU063768.D
 Acq: 21 Nov 2025 14:33

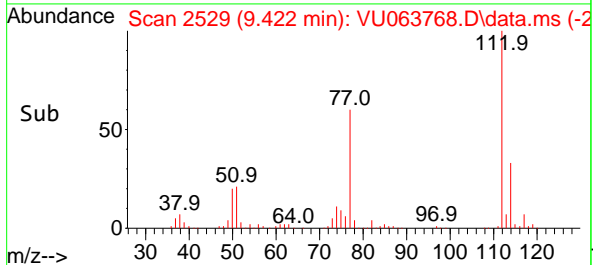
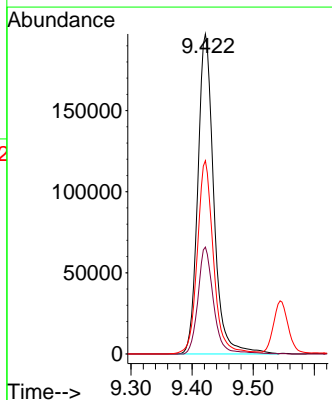
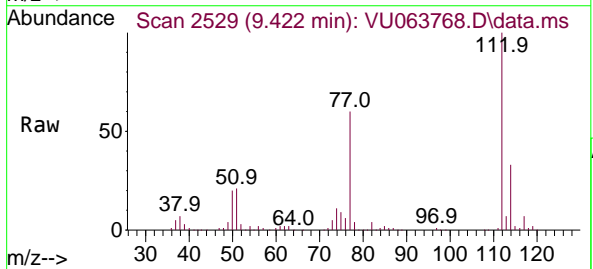
Instrument :
 MSVOA_U
ClientSampled :
 M-31SMS

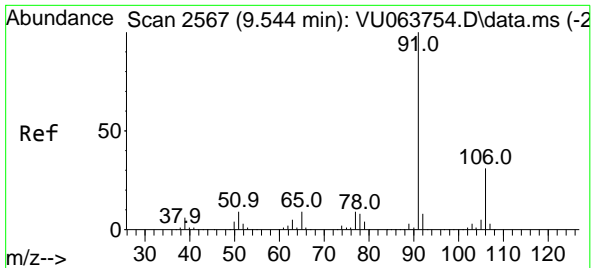
Tgt Ion	Resp	Lower	Upper
107	139372		
107	100		
109	92.4	65.8	122.2
188	3.9	3.2	4.8



#51
 Chlorobenzene
 Concen: 48.818 ug/L
 RT: 9.422 min Scan# 2529
 Delta R.T. -0.000 min
 Lab File: VU063768.D
 Acq: 21 Nov 2025 14:33

Tgt Ion	Resp	Lower	Upper
112	358201		
112	100		
114	33.4	22.1	41.1
77	60.4	48.0	72.0

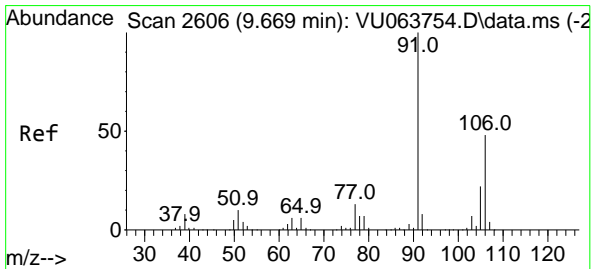
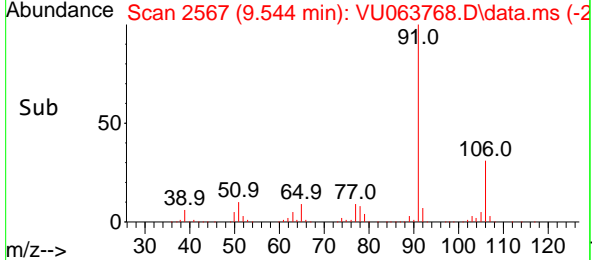
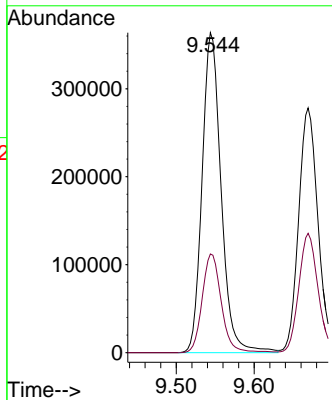
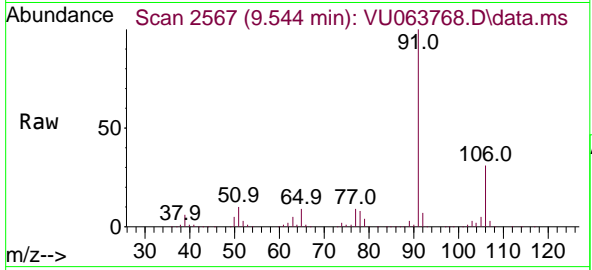




#52
 Ethylbenzene
 Concen: 48.816 ug/L
 RT: 9.544 min Scan# 2567
 Delta R.T. -0.000 min
 Lab File: VU063768.D
 Acq: 21 Nov 2025 14:33

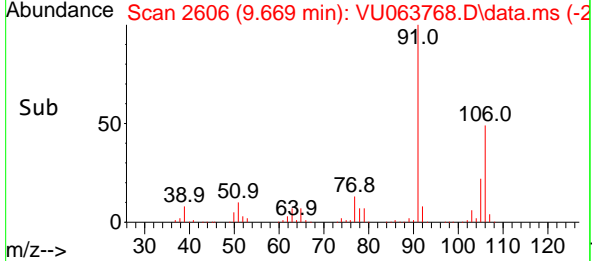
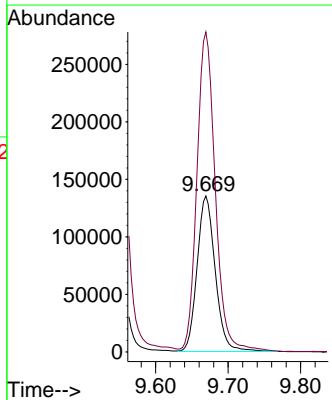
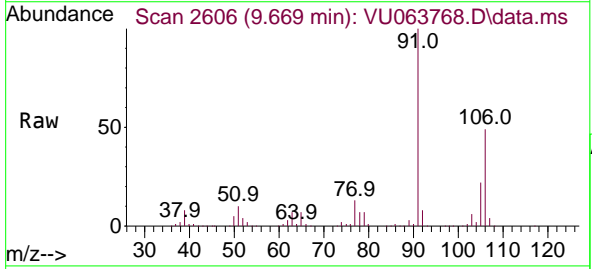
Instrument :
 MSVOA_U
 ClientSampled :
 M-31SMS

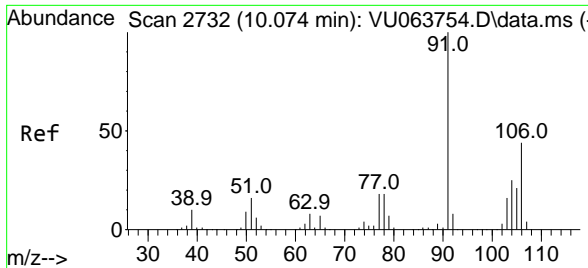
Tgt Ion: 91 Resp: 616312
 Ion Ratio Lower Upper
 91 100
 106 30.8 21.3 39.6



#53
 m,p-Xylene
 Concen: 48.849 ug/L
 RT: 9.669 min Scan# 2606
 Delta R.T. -0.000 min
 Lab File: VU063768.D
 Acq: 21 Nov 2025 14:33

Tgt Ion: 106 Resp: 235068
 Ion Ratio Lower Upper
 106 100
 91 205.2 143.6 266.6

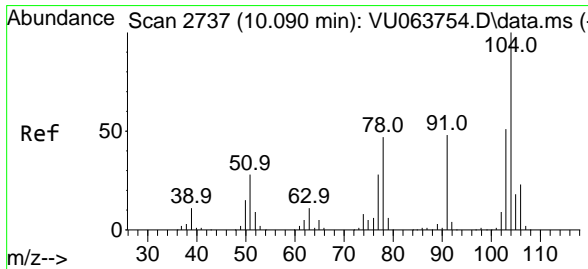
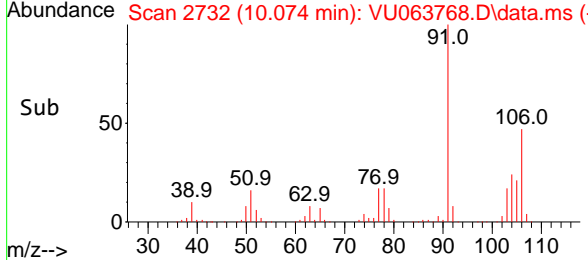
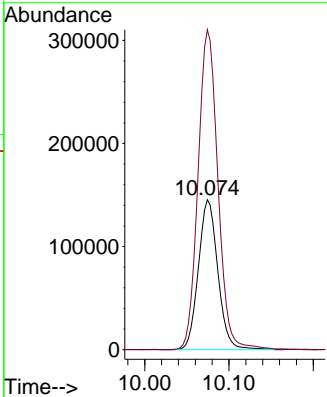
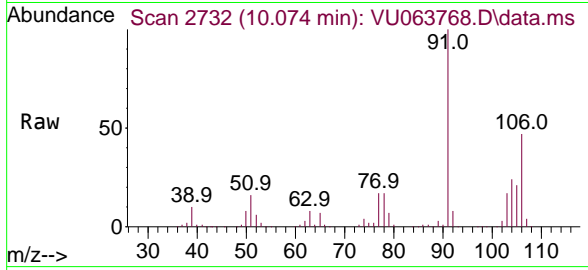




#54
 o-Xylene
 Concen: 49.559 ug/L
 RT: 10.074 min Scan# 2732
 Delta R.T. -0.000 min
 Lab File: VU063768.D
 Acq: 21 Nov 2025 14:33

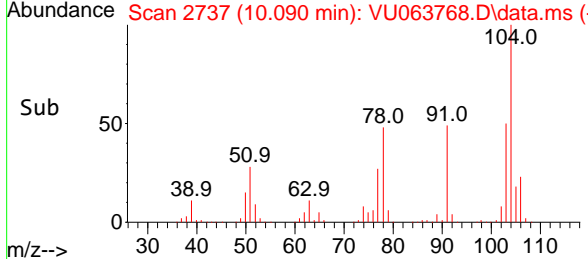
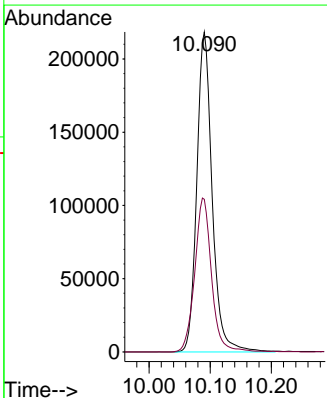
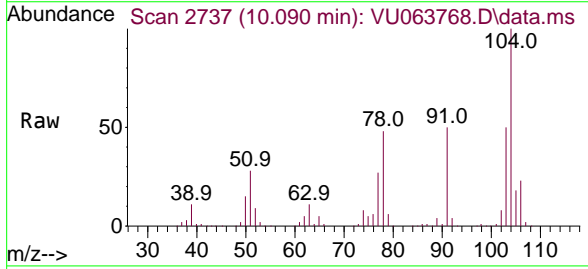
Instrument :
 MSVOA_U
 ClientSampled :
 M-31SMS

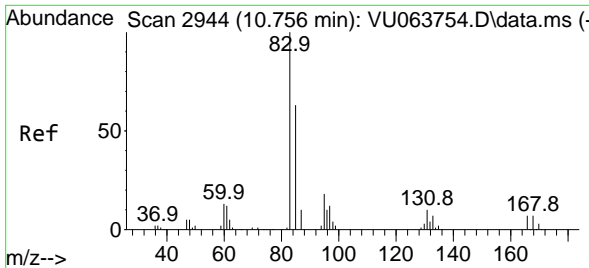
Tgt Ion:106 Resp: 232243
 Ion Ratio Lower Upper
 106 100
 91 213.6 156.0 289.6



#55
 Styrene
 Concen: 50.236 ug/L
 RT: 10.090 min Scan# 2737
 Delta R.T. -0.000 min
 Lab File: VU063768.D
 Acq: 21 Nov 2025 14:33

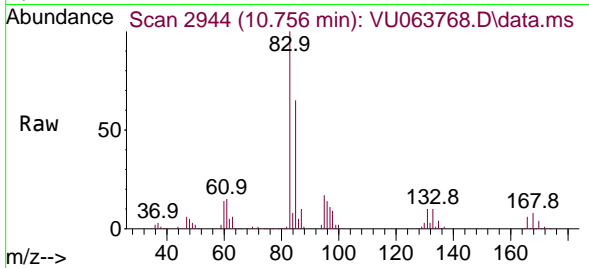
Tgt Ion:104 Resp: 381437
 Ion Ratio Lower Upper
 104 100
 78 47.7 32.0 59.4



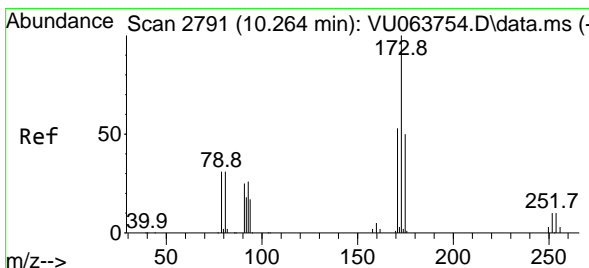
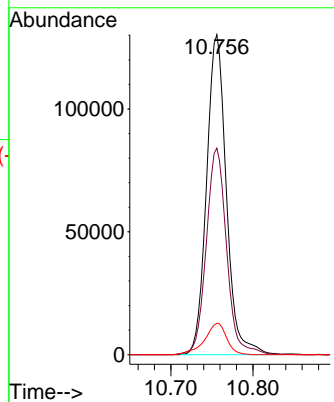
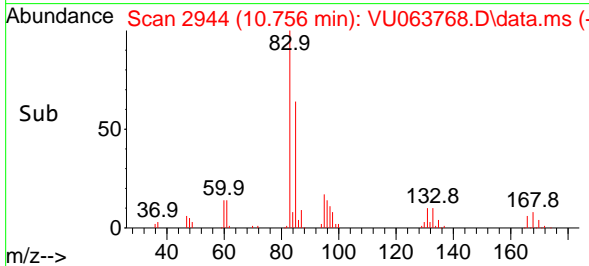


#57
 1,1,2-Tetrachloroethane
 Concen: 49.494 ug/L
 RT: 10.756 min Scan# 2944
 Delta R.T. -0.000 min
 Lab File: VU063768.D
 Acq: 21 Nov 2025 14:33

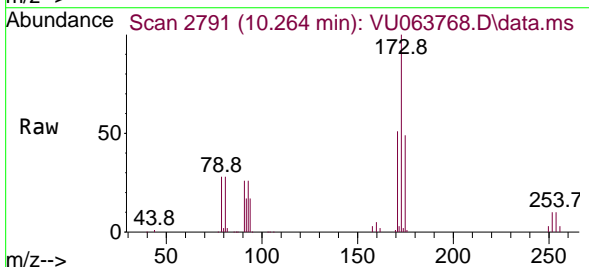
Instrument :
 MSVOA_U
 ClientSampled :
 M-31SMS



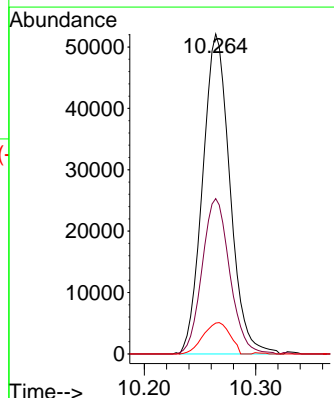
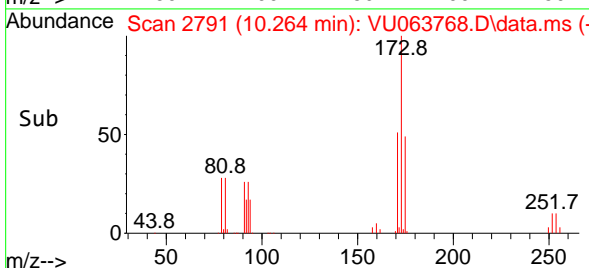
Tgt Ion: 83 Resp: 218201
 Ion Ratio Lower Upper
 83 100
 85 64.5 45.7 84.9
 131 9.8 7.4 11.2

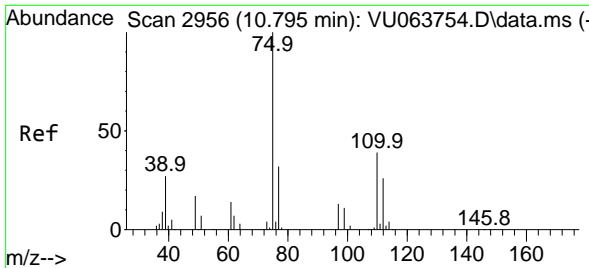


#59
 Bromoform
 Concen: 44.057 ug/L
 RT: 10.264 min Scan# 2791
 Delta R.T. -0.000 min
 Lab File: VU063768.D
 Acq: 21 Nov 2025 14:33



Tgt Ion: 173 Resp: 88728
 Ion Ratio Lower Upper
 173 100
 175 49.1 38.2 57.4
 254 9.6 6.9 10.3

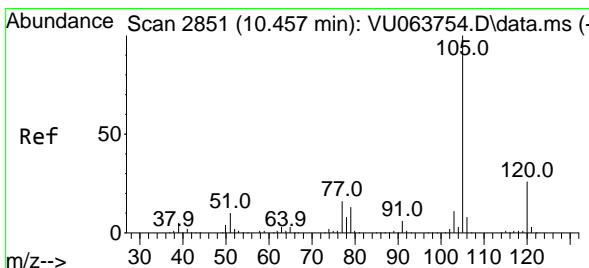
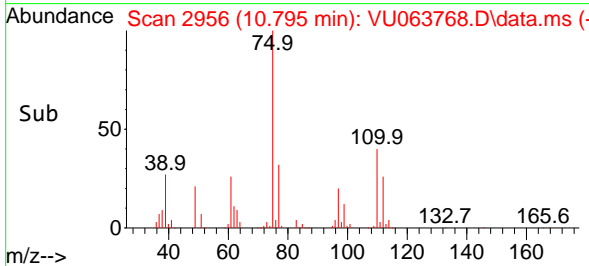
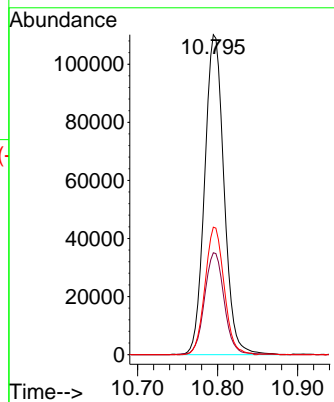
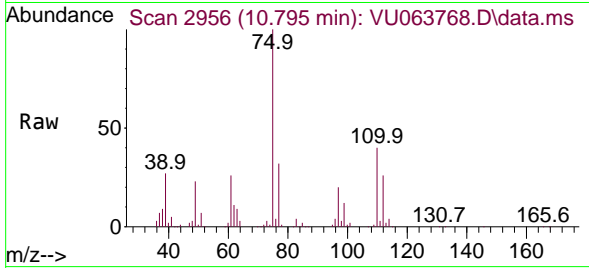




#60
 1,2,3-Trichloropropane
 Concen: 47.803 ug/L
 RT: 10.795 min Scan# 2956
 Delta R.T. -0.000 min
 Lab File: VU063768.D
 Acq: 21 Nov 2025 14:33

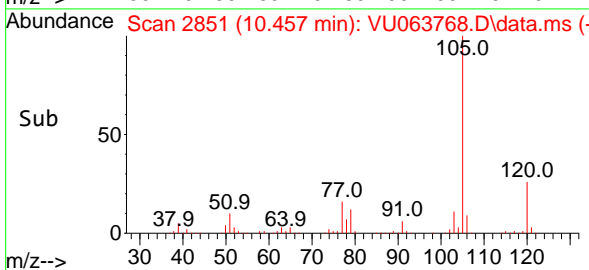
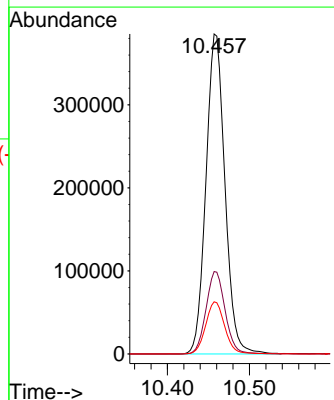
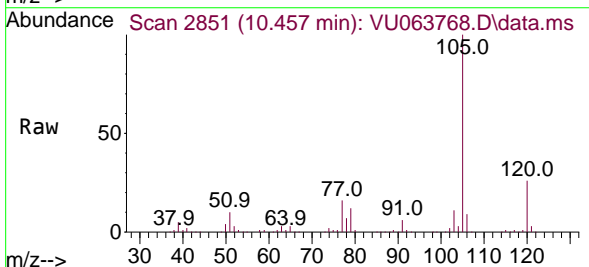
Instrument :
 MSVOA_U
 ClientSampled :
 M-31SMS

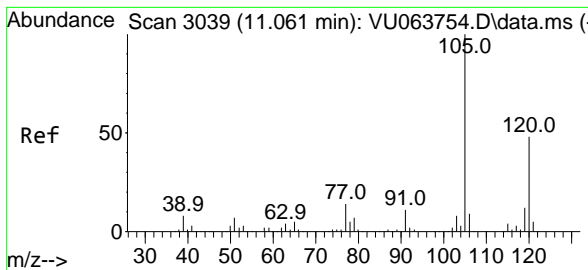
Tgt Ion	Resp	Lower	Upper
75	185026		
75	100		
77	32.4	26.1	39.1
110	39.3	32.3	48.5



#61
 Isopropylbenzene
 Concen: 46.329 ug/L
 RT: 10.457 min Scan# 2851
 Delta R.T. -0.000 min
 Lab File: VU063768.D
 Acq: 21 Nov 2025 14:33

Tgt Ion	Resp	Lower	Upper
105	619805		
105	100		
120	25.9	20.7	31.1
77	16.3	12.9	19.3

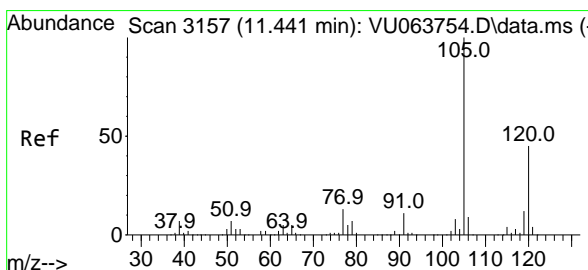
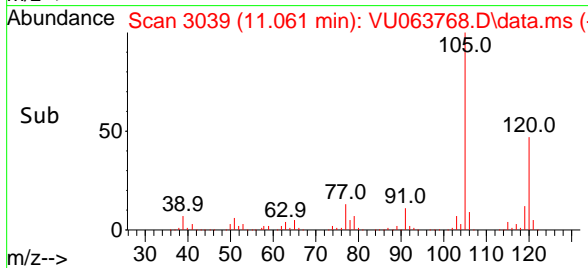
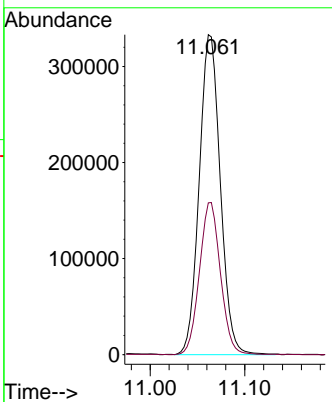
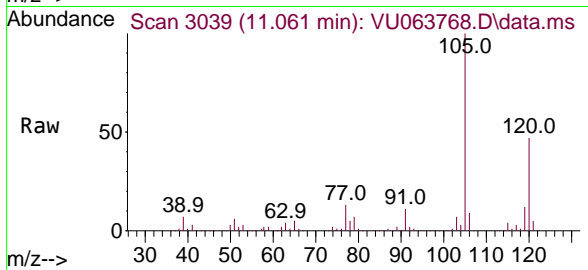




#62
 1,3,5-Trimethylbenzene
 Concen: 47.045 ug/L
 RT: 11.061 min Scan# 3039
 Delta R.T. -0.000 min
 Lab File: VU063768.D
 Acq: 21 Nov 2025 14:33

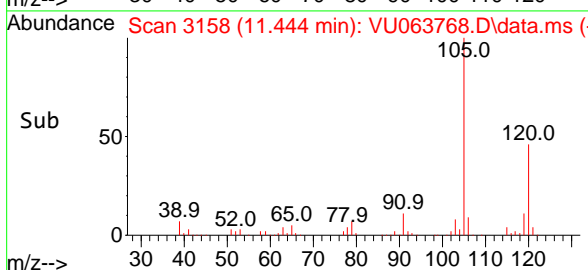
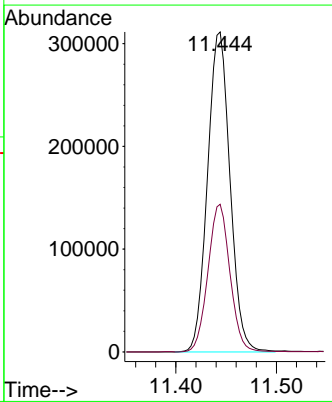
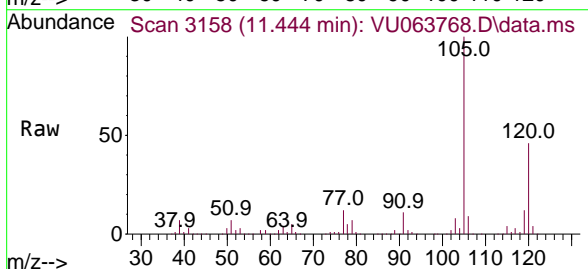
Instrument :
 MSVOA_U
ClientSampled :
 M-31SMS

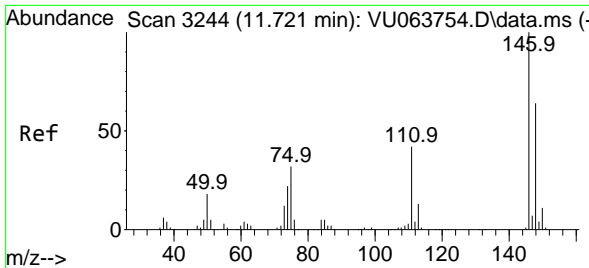
Tgt Ion:105 Resp: 517725
 Ion Ratio Lower Upper
 105 100
 120 47.3 37.8 56.6



#63
 1,2,4-Trimethylbenzene
 Concen: 46.011 ug/L
 RT: 11.444 min Scan# 3158
 Delta R.T. 0.003 min
 Lab File: VU063768.D
 Acq: 21 Nov 2025 14:33

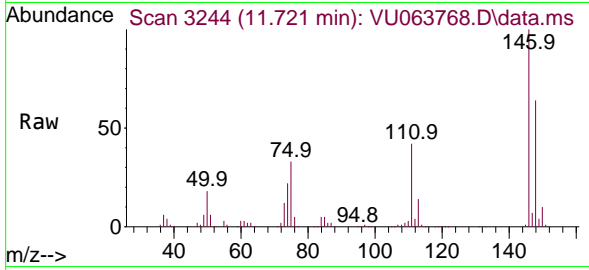
Tgt Ion:105 Resp: 483322
 Ion Ratio Lower Upper
 105 100
 120 45.2 35.6 53.4



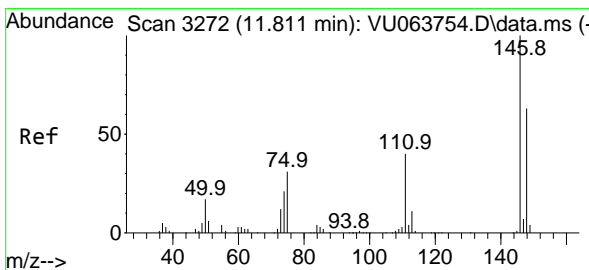
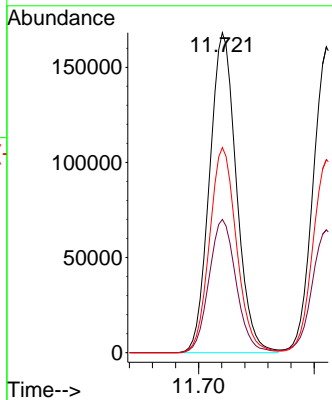
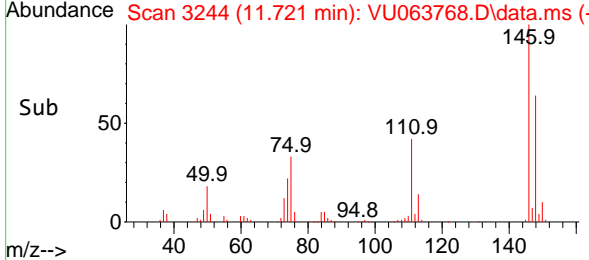


#64
 1,3-Dichlorobenzene
 Concen: 45.239 ug/L
 RT: 11.721 min Scan# 3244
 Delta R.T. -0.000 min
 Lab File: VU063768.D
 Acq: 21 Nov 2025 14:33

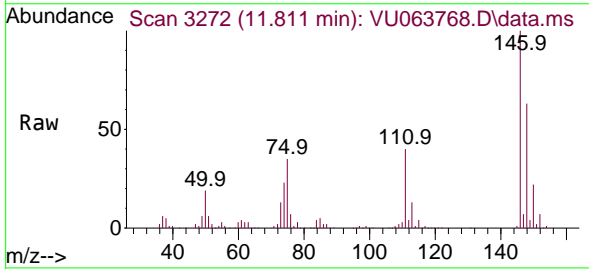
Instrument :
 MSVOA_U
 ClientSampled :
 M-31SMS



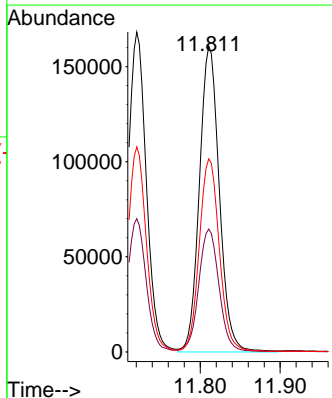
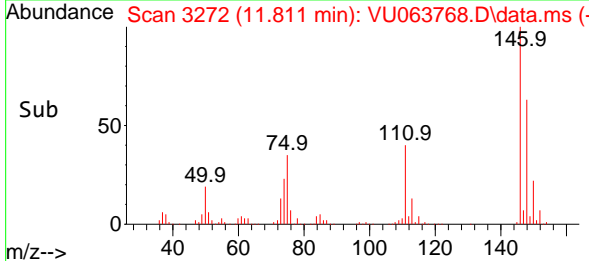
Tgt Ion:146 Resp: 271329
 Ion Ratio Lower Upper
 146 100
 111 41.6 29.8 55.3
 148 64.1 44.4 82.4

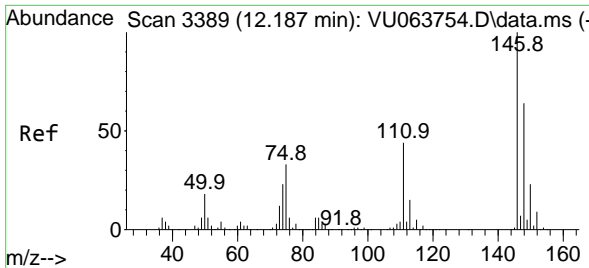


#65
 1,4-Dichlorobenzene
 Concen: 45.208 ug/L
 RT: 11.811 min Scan# 3272
 Delta R.T. -0.000 min
 Lab File: VU063768.D
 Acq: 21 Nov 2025 14:33



Tgt Ion:146 Resp: 277716
 Ion Ratio Lower Upper
 146 100
 111 40.1 28.8 53.4
 148 63.1 44.9 83.3



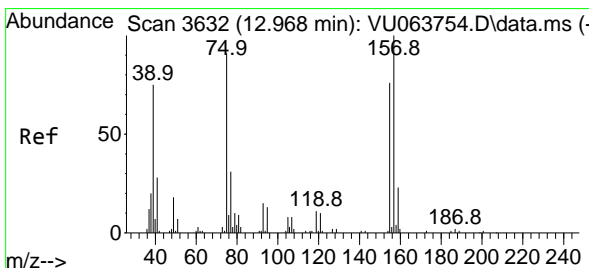
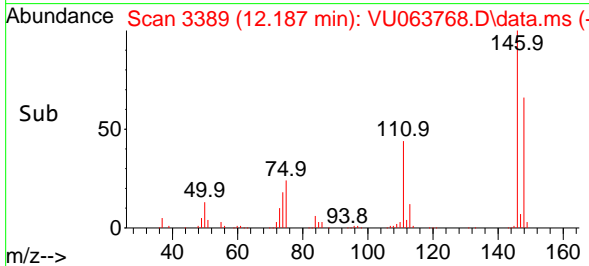
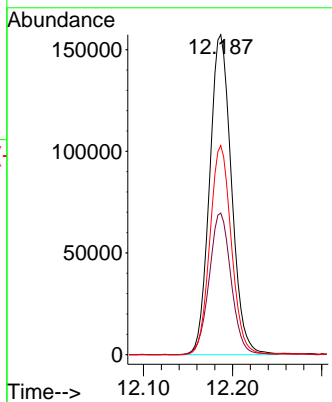
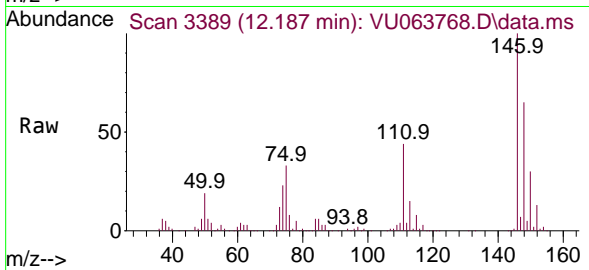


#67
 1,2-Dichlorobenzene
 Concen: 46.222 ug/L
 RT: 12.187 min Scan# 3389
 Delta R.T. -0.000 min
 Lab File: VU063768.D
 Acq: 21 Nov 2025 14:33

Instrument :
 MSVOA_U
 ClientSampled :
 M-31SMS

Tgt Ion:146 Resp: 268771

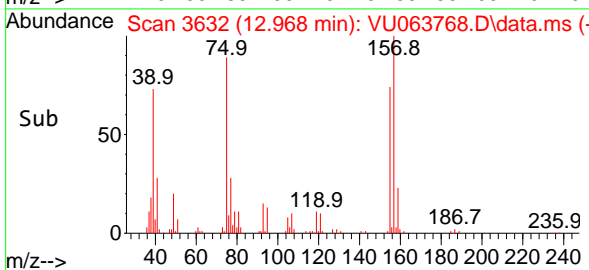
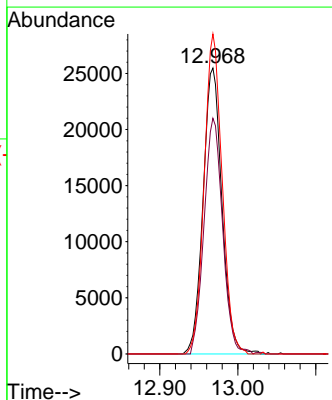
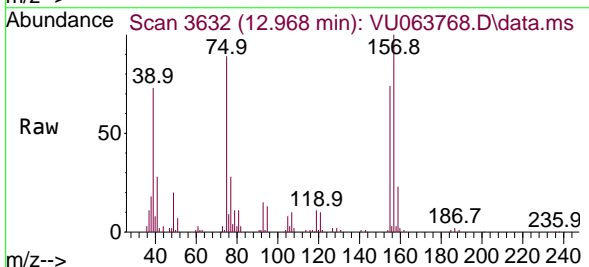
Ion	Ratio	Lower	Upper
146	100		
111	44.2	34.2	51.4
148	65.3	49.6	74.4

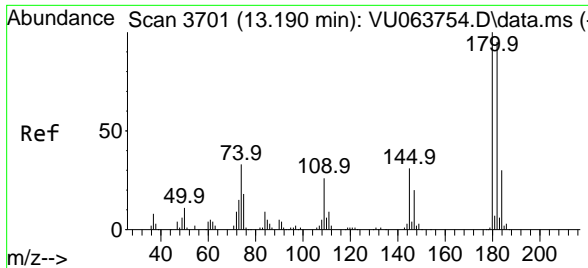


#68
 1,2-Dibromo-3-chloropropane
 Concen: 44.888 ug/L
 RT: 12.968 min Scan# 3632
 Delta R.T. -0.000 min
 Lab File: VU063768.D
 Acq: 21 Nov 2025 14:33

Tgt Ion: 75 Resp: 42902

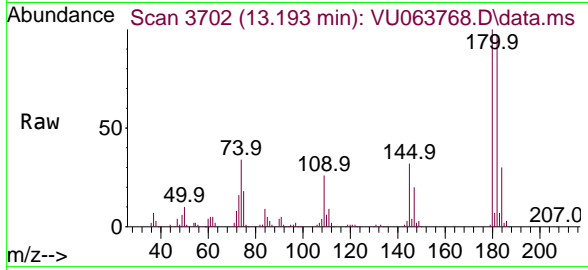
Ion	Ratio	Lower	Upper
75	100		
155	86.0	64.6	97.0
157	111.9	78.8	118.2





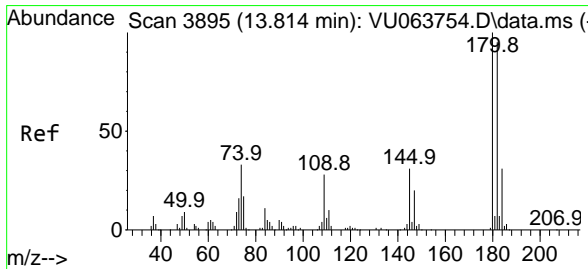
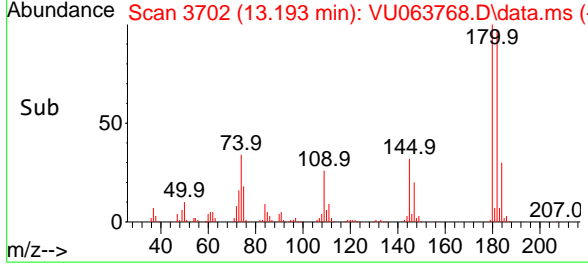
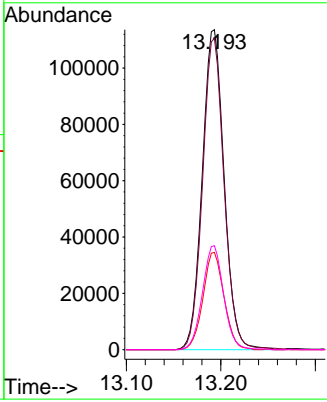
#69
 1,3,5-Trichlorobenzene
 Concen: 45.107 ug/L
 RT: 13.193 min Scan# 3702
 Delta R.T. 0.003 min
 Lab File: VU063768.D
 Acq: 21 Nov 2025 14:33

Instrument :
 MSVOA_U
ClientSampled :
 M-31SMS

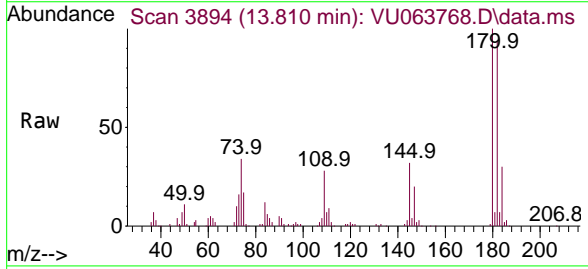


Tgt Ion:180 Resp: 182848

Ion	Ratio	Lower	Upper
180	100		
182	95.6	76.4	114.6
184	29.2	24.4	36.6
145	31.4	25.8	38.6

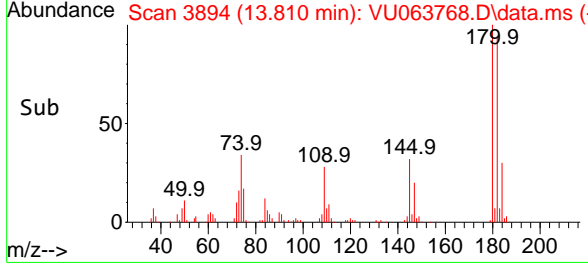
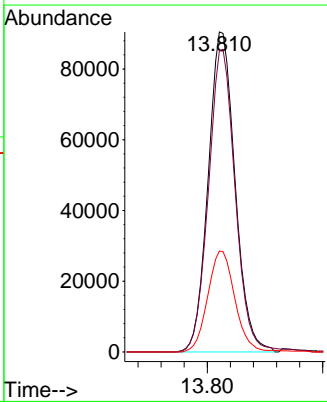


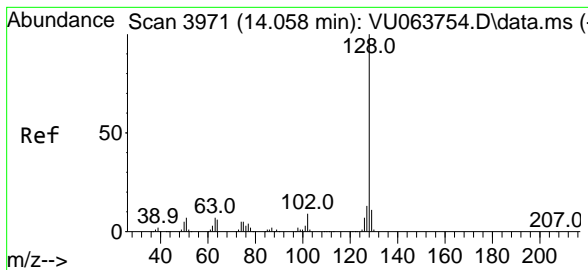
#70
 1,2,4-trichlorobenzene
 Concen: 43.198 ug/L
 RT: 13.810 min Scan# 3894
 Delta R.T. -0.003 min
 Lab File: VU063768.D
 Acq: 21 Nov 2025 14:33



Tgt Ion:180 Resp: 146017

Ion	Ratio	Lower	Upper
180	100		
182	94.4	75.8	113.8
145	31.6	25.7	38.5

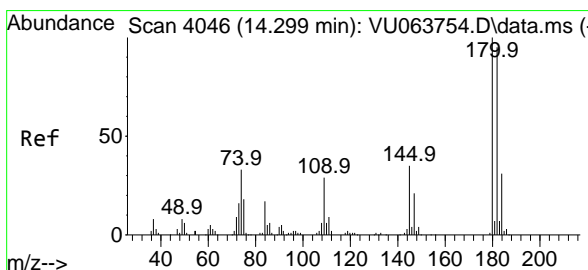
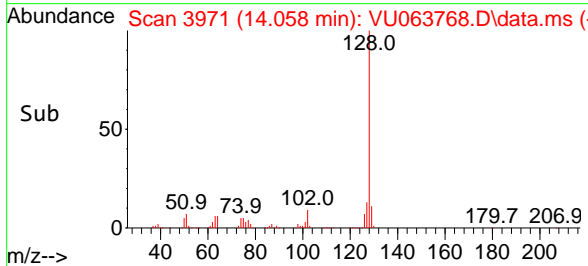
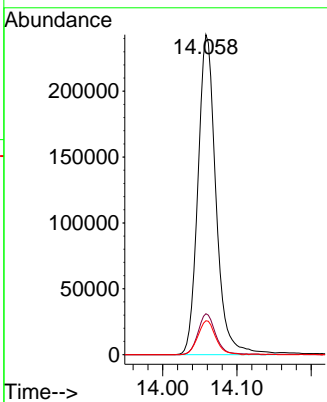
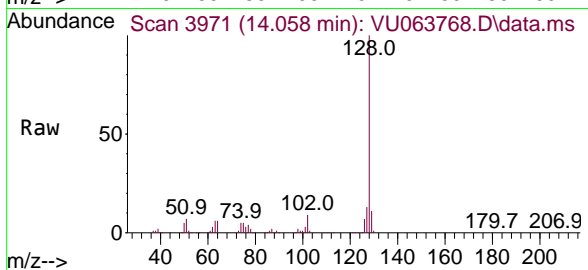




#71
 Naphthalene
 Concen: 45.561 ug/L
 RT: 14.058 min Scan# 3971
 Delta R.T. -0.000 min
 Lab File: VU063768.D
 Acq: 21 Nov 2025 14:33

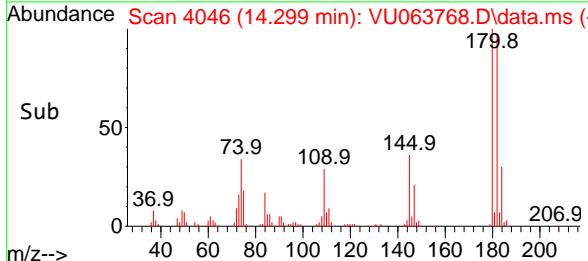
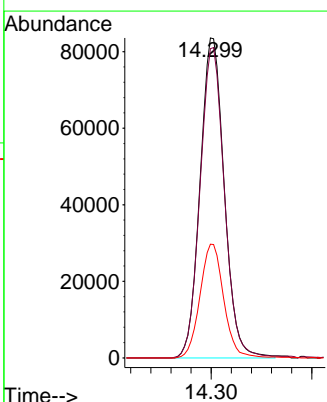
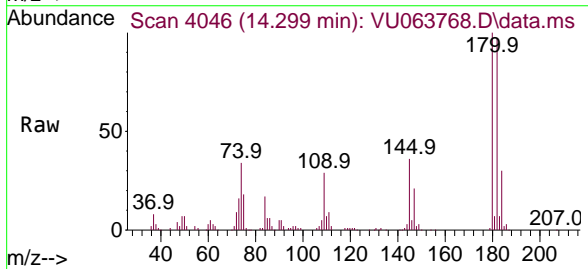
Instrument :
 MSVOA_U
ClientSampled :
 M-31SMS

Tgt Ion	Resp	Lower	Upper
128	409847		
127	12.5	10.3	15.5
129	10.4	8.7	13.1



#72
 1,2,3-Trichlorobenzene
 Concen: 43.506 ug/L
 RT: 14.299 min Scan# 4046
 Delta R.T. -0.000 min
 Lab File: VU063768.D
 Acq: 21 Nov 2025 14:33

Tgt Ion	Resp	Lower	Upper
180	139381		
182	97.6	76.9	115.3
145	34.8	26.6	39.8



Data Path : Z:\voasrv\HPCHEM1\MSVOA_U\Data\VU112125\
 Data File : VU063768.D
 Acq On : 21 Nov 2025 14:33
 Operator : MD/SY
 Sample : Q3688-02MS
 Misc : 5.0mL/MSVOA_U/WATER
 ALS Vial : 17 Sample Multiplier: 1

Instrument :
 MSVOA_U
 Client Sampled :
 M-31SMS

Quant Time: Nov 21 22:31:07 2025
 Quant Method : Z:\voasrv\HPCHEM1\MSVOA_U\Method\SFAMULM111725WMA.M
 Quant Title : VOC Analysis
 QLast Update : Fri Nov 21 22:28:08 2025
 Response via : Initial Calibration

Compound	R.T.	QIon	Response	Conc	Units	Dev(Min)
Internal Standards						
1) 1,4-Difluorobenzene	6.219	114	323065	50.000	ug/L	0.00
28) Chlorobenzene-d5	9.393	117	322908	50.000	ug/L	0.00
58) 1,4-Dichlorobenzene-d4	11.785	152	177337	50.000	ug/L	0.00
System Monitoring Compounds						
4) Vinyl Chloride-d3	1.583	65	124984	44.801	ug/L	0.00
Spiked Amount	50.000	Range 60 - 135	Recovery =	89.600%		
7) Chloroethane-d5	1.891	69	99965	46.510	ug/L	0.00
Spiked Amount	50.000	Range 70 - 130	Recovery =	93.020%		
11) 1,1-Dichloroethene-d2	2.541	63	227097	46.962	ug/L	0.00
Spiked Amount	50.000	Range 60 - 125	Recovery =	93.920%		
21) 2-Butanone-d5	4.595	46	150940	94.905	ug/L	0.00
Spiked Amount	100.000	Range 40 - 130	Recovery =	94.900%		
24) Chloroform-d	5.029	84	230925	49.335	ug/L	0.00
Spiked Amount	50.000	Range 70 - 125	Recovery =	98.680%		
26) 1,2-Dichloroethane-d4	5.669	65	149088	48.438	ug/L	0.00
Spiked Amount	50.000	Range 70 - 125	Recovery =	96.880%		
32) Benzene-d6	5.695	84	429004	45.325	ug/L	0.00
Spiked Amount	50.000	Range 70 - 125	Recovery =	90.660%		
36) 1,2-Dichloropropane-d6	6.660	67	126953	45.689	ug/L	0.00
Spiked Amount	50.000	Range 70 - 120	Recovery =	91.380%		
41) Toluene-d8	7.872	98	404937	45.059	ug/L	0.00
Spiked Amount	50.000	Range 80 - 120	Recovery =	90.120%		
43) trans-1,3-Dichloroprop...	8.155	79	49506	43.114	ug/L	0.00
Spiked Amount	50.000	Range 60 - 125	Recovery =	86.220%		
47) 2-Hexanone-d5	8.608	63	96430	95.450	ug/L	0.00
Spiked Amount	100.000	Range 45 - 130	Recovery =	95.450%		
56) 1,1,2,2-Tetrachloroeth...	10.730	84	194004	47.744	ug/L	0.00
Spiked Amount	50.000	Range 65 - 120	Recovery =	95.480%		
66) 1,2-Dichlorobenzene-d4	12.167	152	163167	48.740	ug/L	0.00
Spiked Amount	50.000	Range 80 - 120	Recovery =	97.480%		
Target Compounds						
2) Dichlorodifluoromethane	1.374	85	93824	49.901	ug/L	100
3) Chloromethane	1.509	50	100439	47.213	ug/L	99
5) Vinyl chloride	1.589	62	123564	49.955	ug/L	100
6) Bromomethane	1.837	94	81841	52.211	ug/L	96
8) Chloroethane	1.914	64	82792	50.145	ug/L	98
9) Trichlorofluoromethane	2.116	101	204395	52.392	ug/L	100
10) 1,1,2-Trichloro-1,2,2-...	2.554	101	115376	50.037	ug/L	100
12) 1,1-Dichloroethene	2.554	96	102611	48.657	ug/L	92
13) Acetone	2.605	43	126830	58.924	ug/L	99
14) Carbon disulfide	2.766	76	226780	41.284	ug/L	98
15) Methyl Acetate	2.923	43	132180	51.139	ug/L	99
16) Methylene chloride	3.017	84	122560	49.853	ug/L	99
17) trans-1,2-Dichloroethene	3.322	96	109976	48.913	ug/L	92
18) Methyl tert-butyl Ether	3.335	73	385418	50.651	ug/L	99
19) 1,1-Dichloroethane	3.833	63	216764	50.033	ug/L	97
20) cis-1,2-Dichloroethene	4.631	96	130575	50.453	ug/L	99
22) 2-Butanone	4.673	43	182417	76.284	ug/L	99
23) Bromochloromethane	4.939	128	69024	51.875	ug/L	98
25) Chloroform	5.052	83	242236	51.654	ug/L	100

Data Path : Z:\voasrv\HPCHEM1\MSVOA_U\Data\VU112125\
 Data File : VU063768.D
 Acq On : 21 Nov 2025 14:33
 Operator : MD/SY
 Sample : Q3688-02MS
 Misc : 5.0mL/MSVOA_U/WATER
 ALS Vial : 17 Sample Multiplier: 1

Instrument :
 MSVOA_U
 ClientSampleId :
 M-31SMS

Quant Time: Nov 21 22:31:07 2025
 Quant Method : Z:\voasrv\HPCHEM1\MSVOA_U\Method\SFAMULM111725WMA.M
 Quant Title : VOC Analysis
 QLast Update : Fri Nov 21 22:28:08 2025
 Response via : Initial Calibration

Compound	R.T.	QIon	Response	Conc	Units	Dev(Min)
27) 1,2-Dichloroethane	5.763	62	202185	52.813	ug/L	99
29) Cyclohexane	5.354	56	193150	47.541	ug/L	95
30) 1,1,1-Trichloroethane	5.280	97	197970	48.012	ug/L	99
31) Carbon tetrachloride	5.492	117	157922	48.707	ug/L	98
33) Benzene	5.743	78	496473	50.410	ug/L	100
34) Trichloroethene	6.515	95	138387	48.741	ug/L	99
35) Methylcyclohexane	6.734	83	196861	47.233	ug/L	100
37) 1,2-Dichloropropane	6.759	63	130666	51.051	ug/L	100
38) Bromodichloromethane	7.078	83	170425	48.625	ug/L	100
39) cis-1,3-Dichloropropene	7.579	75	179172	47.203	ug/L	100
40) 4-Methyl-2-pentanone	7.762	43	369297	99.682	ug/L	100
42) Toluene	7.943	91	541426	49.795	ug/L	100
44) trans-1,3-Dichloropropene	8.184	75	146953	44.351	ug/L	99
45) 1,1,2-Trichloroethane	8.373	97	133367	49.271	ug/L	98
46) Tetrachloroethene	8.528	164	103546	47.689	ug/L	99
48) 2-Hexanone	8.660	43	268767	92.429	ug/L	97
49) Dibromochloromethane	8.782	129	121427	46.452	ug/L	95
50) 1,2-Dibromoethane	8.897	107	139372	49.053	ug/L	98
51) Chlorobenzene	9.422	112	358201	48.818	ug/L	99
52) Ethylbenzene	9.544	91	616312	48.816	ug/L	99
53) m,p-Xylene	9.669	106	235068	48.849	ug/L	100
54) o-Xylene	10.074	106	232243	49.559	ug/L	94
55) Styrene	10.090	104	381437	50.236	ug/L	97
57) 1,1,2,2-Tetrachloroethane	10.756	83	218201	49.494	ug/L	99
59) Bromoform	10.264	173	88728	44.057	ug/L	98
60) 1,2,3-Trichloropropane	10.795	75	185026	47.803	ug/L	99
61) Isopropylbenzene	10.457	105	619805	46.329	ug/L	100
62) 1,3,5-Trimethylbenzene	11.061	105	517725	47.045	ug/L	100
63) 1,2,4-Trimethylbenzene	11.444	105	483322	46.011	ug/L	99
64) 1,3-Dichlorobenzene	11.721	146	271329	45.239	ug/L	99
65) 1,4-Dichlorobenzene	11.811	146	277716	45.208	ug/L	99
67) 1,2-Dichlorobenzene	12.187	146	268771	46.222	ug/L	97
68) 1,2-Dibromo-3-chloropr...	12.968	75	42902	44.888	ug/L	90
69) 1,3,5-Trichlorobenzene	13.193	180	182848	45.107	ug/L	99
70) 1,2,4-trichlorobenzene	13.810	180	146017	43.198	ug/L	99
71) Naphthalene	14.058	128	409847	45.561	ug/L	99
72) 1,2,3-Trichlorobenzene	14.299	180	139381	43.506	ug/L	98

(#) = qualifier out of range (m) = manual integration (+) = signals summed