

Data Path : Z:\pestpcbsrv\HPCHEM1\ECD_Q\Data\PQ111825\
 Data File : PQ071283.D
 Signal(s) : Signal #1: ECD1A.ch Signal #2: ECD2B.ch
 Acq On : 18 Nov 2025 17:37
 Operator : YP\AJ
 Sample : AR1262ICC500
 Misc :
 ALS Vial : 111 Sample Multiplier: 1

Instrument :
 ECD_Q
 ClientSampleId :
 AR1262ICC500

Integration File signal 1: autoint1.e
 Integration File signal 2: autoint2.e
 Quant Time: Nov 19 03:48:53 2025
 Quant Method : Z:\pestpcbsrv\HPCHEM1\ECD_Q\Method\PQ111825.M
 Quant Title : GC EXTRACTABLES
 QLast Update : Wed Nov 19 03:48:36 2025
 Response via : Initial Calibration
 Integrator: ChemStation

Volume Inj. : 2 µl
 Signal #1 Phase : ZB-MR1 Signal #2 Phase: ZB-MR2
 Signal #1 Info : 30Mx0.32mmx 0.50µ Signal #2 Info : 30M x 0.32mm x 0.25µm

Compound	RT#1	RT#2	Resp#1	Resp#2	ng/ml	ng/ml

System Monitoring Compounds						
1) SA Tetrachlo...	3.412	2.857	397.4E6	440.5E6	50.000	50.000
2) SA Decachlor...	8.537	7.659	282.3E6	413.8E6	50.000	50.000
Target Compounds						
36) L8 AR-1262-1	6.868	5.845	233.3E6	319.8E6	500.000	500.000
37) L8 AR-1262-2	7.175	6.094	425.2E6	297.2E6	500.000	500.000
38) L8 AR-1262-3	7.449	6.618	280.4E6	238.8E6	500.000	500.000
39) L8 AR-1262-4	7.524	6.678	219.1E6	447.2E6	500.000	500.000
40) L8 AR-1262-5	8.021	7.171	142.0E6	214.2E6	500.000	500.000

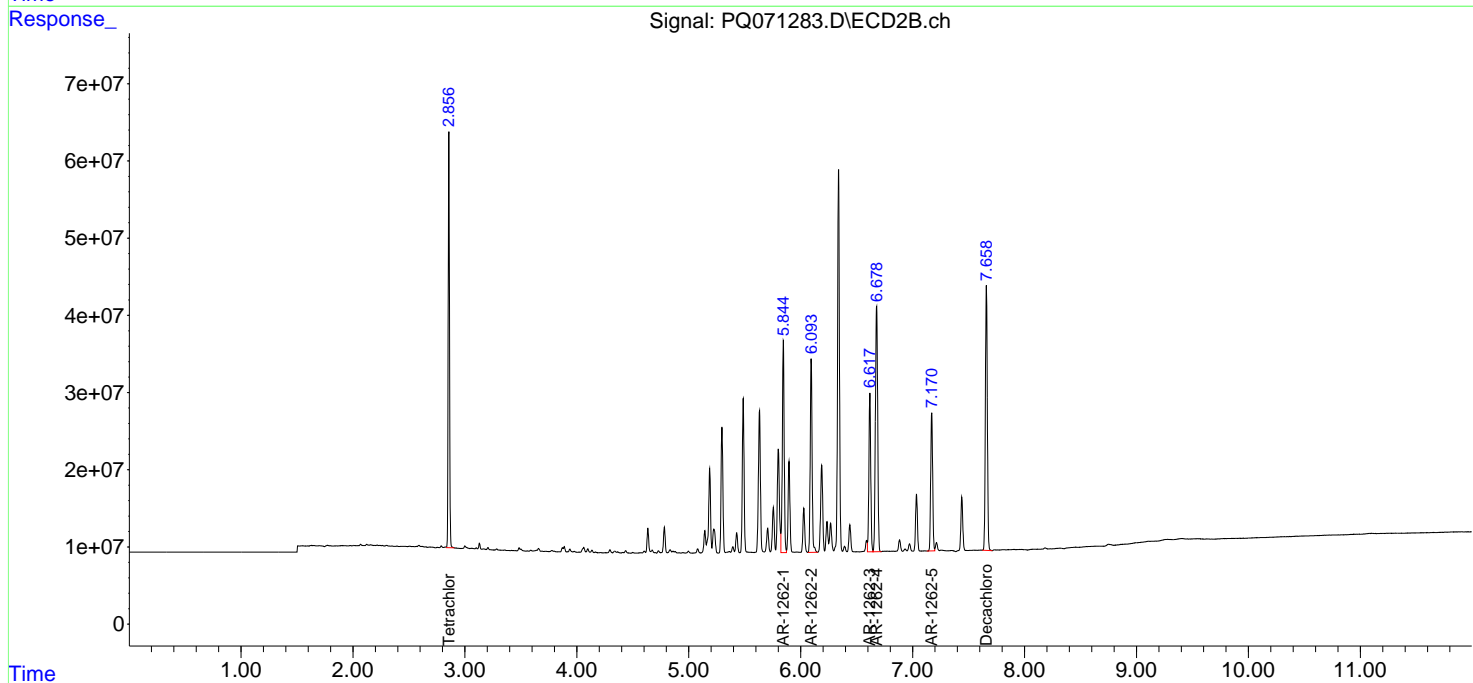
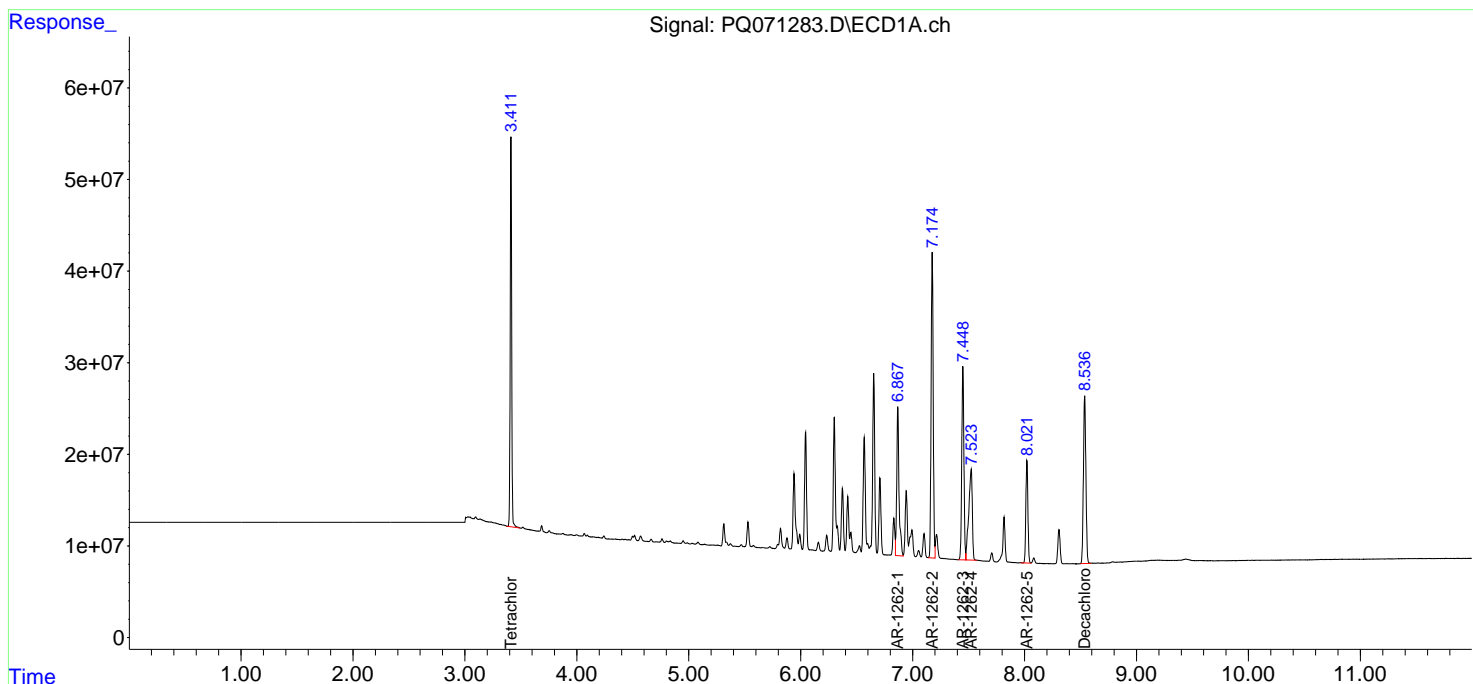
(f)=RT Delta > 1/2 Window (#)=Amounts differ by > 25% (m)=manual int.

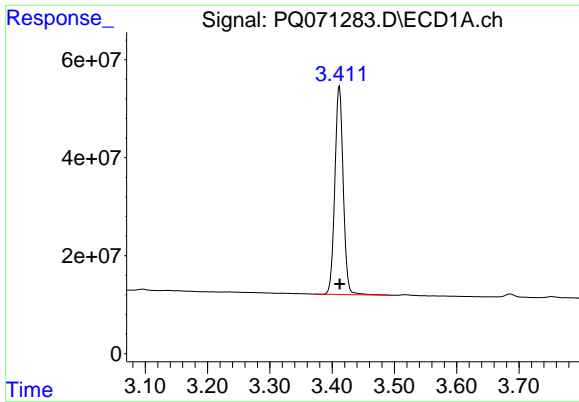
Data Path : Z:\pestpcbsrv\HPCHEM1\ECD_Q\Data\PQ111825\
 Data File : PQ071283.D
 Signal(s) : Signal #1: ECD1A.ch Signal #2: ECD2B.ch
 Acq On : 18 Nov 2025 17:37
 Operator : YP\AJ
 Sample : AR1262ICC500
 Misc :
 ALS Vial : 111 Sample Multiplier: 1

Instrument :
 ECD_Q
 ClientSampleId :
 AR1262ICC500

Integration File signal 1: autoint1.e
 Integration File signal 2: autoint2.e
 Quant Time: Nov 19 03:48:53 2025
 Quant Method : Z:\pestpcbsrv\HPCHEM1\ECD_Q\Method\PQ111825.M
 Quant Title : GC EXTRACTABLES
 QLast Update : Wed Nov 19 03:48:36 2025
 Response via : Initial Calibration
 Integrator: ChemStation

Volume Inj. : 2 µl
 Signal #1 Phase : ZB-MR1 Signal #2 Phase: ZB-MR2
 Signal #1 Info : 30Mx0.32mmx 0.50µ Signal #2 Info : 30M x 0.32mm x 0.25µm

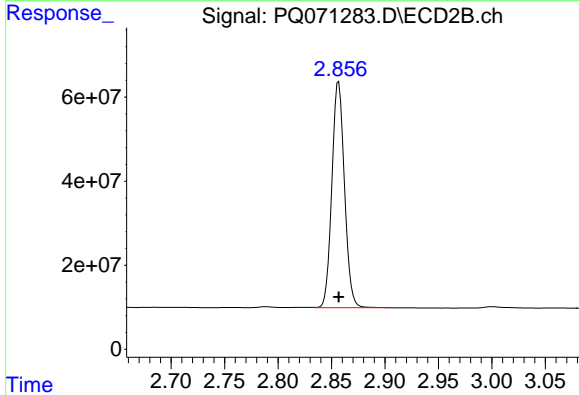




#1 Tetrachloro-m-xylene

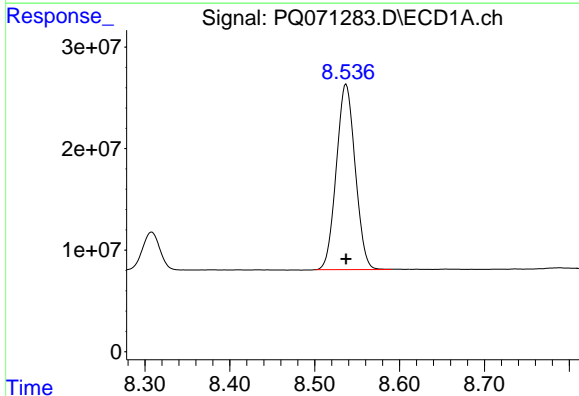
R.T.: 3.412 min
 Delta R.T.: 0.000 min
 Response: 397359526
 Conc: 50.00 ng/ml

Instrument :
 ECD_Q
 ClientSampleId :
 AR1262ICC500



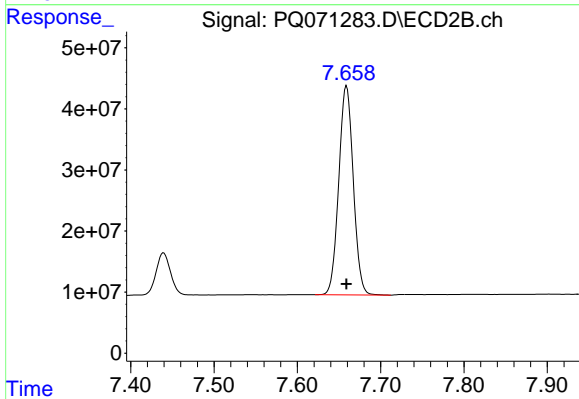
#1 Tetrachloro-m-xylene

R.T.: 2.857 min
 Delta R.T.: 0.000 min
 Response: 440482536
 Conc: 50.00 ng/ml



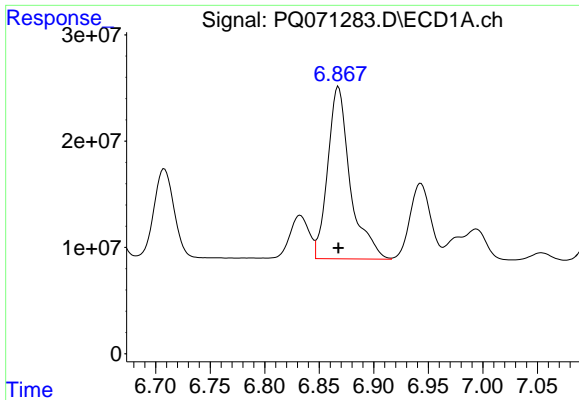
#2 Decachlorobiphenyl

R.T.: 8.537 min
 Delta R.T.: 0.000 min
 Response: 282269852
 Conc: 50.00 ng/ml



#2 Decachlorobiphenyl

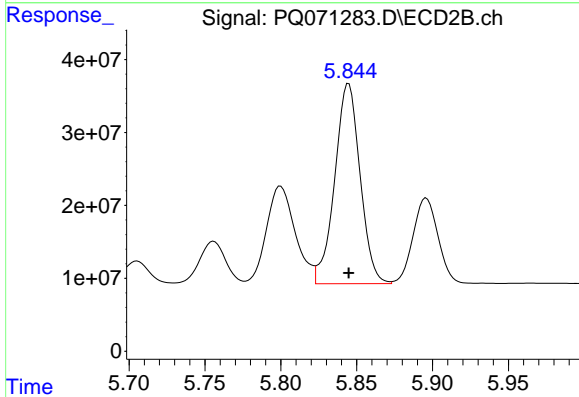
R.T.: 7.659 min
 Delta R.T.: 0.000 min
 Response: 413775408
 Conc: 50.00 ng/ml



#36 AR-1262-1

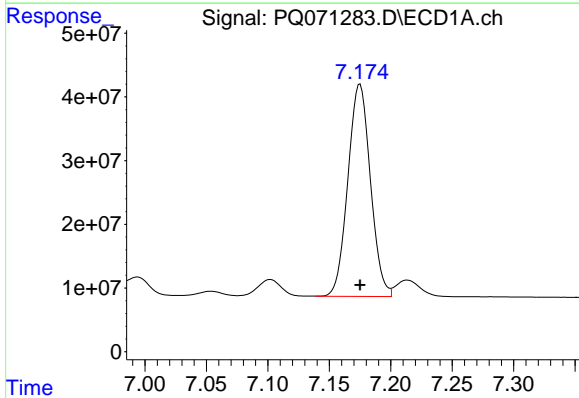
R.T.: 6.868 min
 Delta R.T.: 0.000 min
 Response: 233323011
 Conc: 500.00 ng/ml

Instrument :
 ECD_Q
 ClientSampleId :
 AR1262ICC500



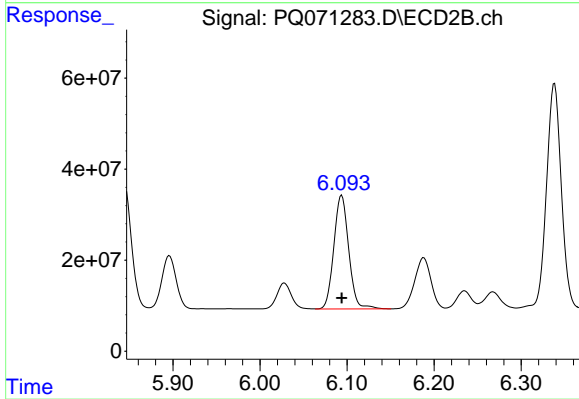
#36 AR-1262-1

R.T.: 5.845 min
 Delta R.T.: 0.000 min
 Response: 319754851
 Conc: 500.00 ng/ml



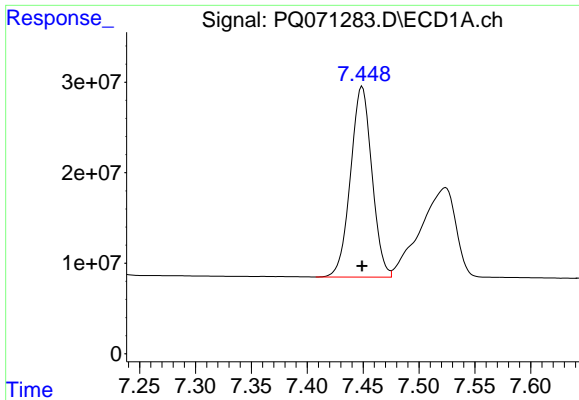
#37 AR-1262-2

R.T.: 7.175 min
 Delta R.T.: 0.000 min
 Response: 425161976
 Conc: 500.00 ng/ml



#37 AR-1262-2

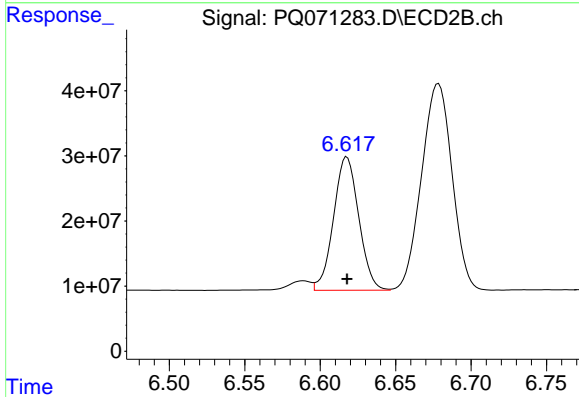
R.T.: 6.094 min
 Delta R.T.: 0.000 min
 Response: 297170097
 Conc: 500.00 ng/ml



#38 AR-1262-3

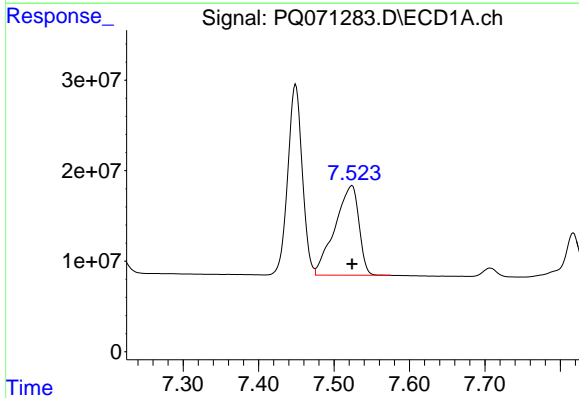
R.T.: 7.449 min
 Delta R.T.: 0.000 min
 Response: 280435199
 Conc: 500.00 ng/ml

Instrument :
 ECD_Q
 ClientSampleId :
 AR1262ICC500



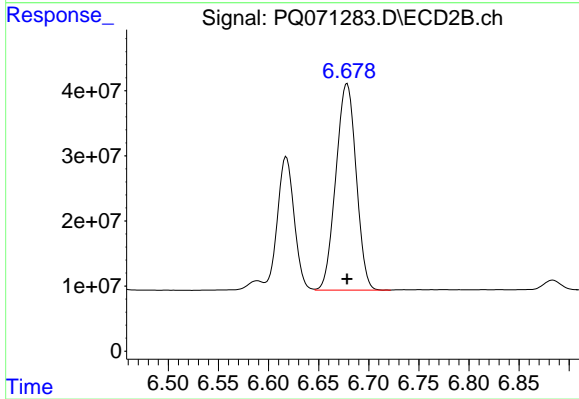
#38 AR-1262-3

R.T.: 6.618 min
 Delta R.T.: 0.000 min
 Response: 238828993
 Conc: 500.00 ng/ml



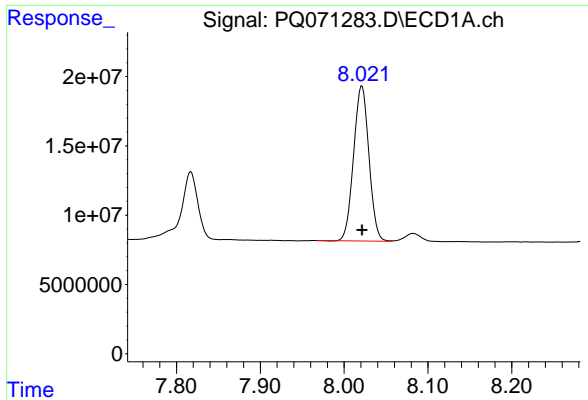
#39 AR-1262-4

R.T.: 7.524 min
 Delta R.T.: 0.000 min
 Response: 219133752
 Conc: 500.00 ng/ml



#39 AR-1262-4

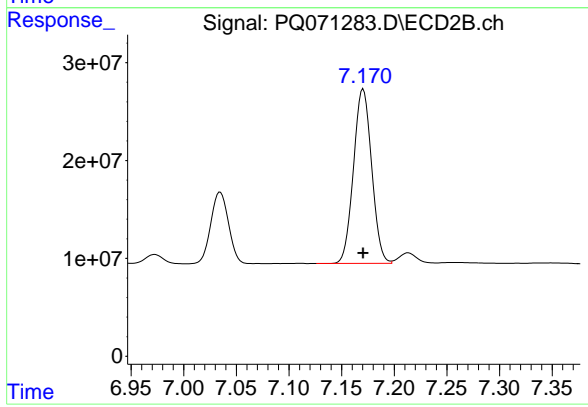
R.T.: 6.678 min
 Delta R.T.: 0.000 min
 Response: 447174978
 Conc: 500.00 ng/ml



#40 AR-1262-5

R.T.: 8.021 min
Delta R.T.: 0.000 min
Response: 141988111
Conc: 500.00 ng/ml

Instrument :
ECD_Q
ClientSampleId :
AR1262ICC500



#40 AR-1262-5

R.T.: 7.171 min
Delta R.T.: 0.000 min
Response: 214166302
Conc: 500.00 ng/ml