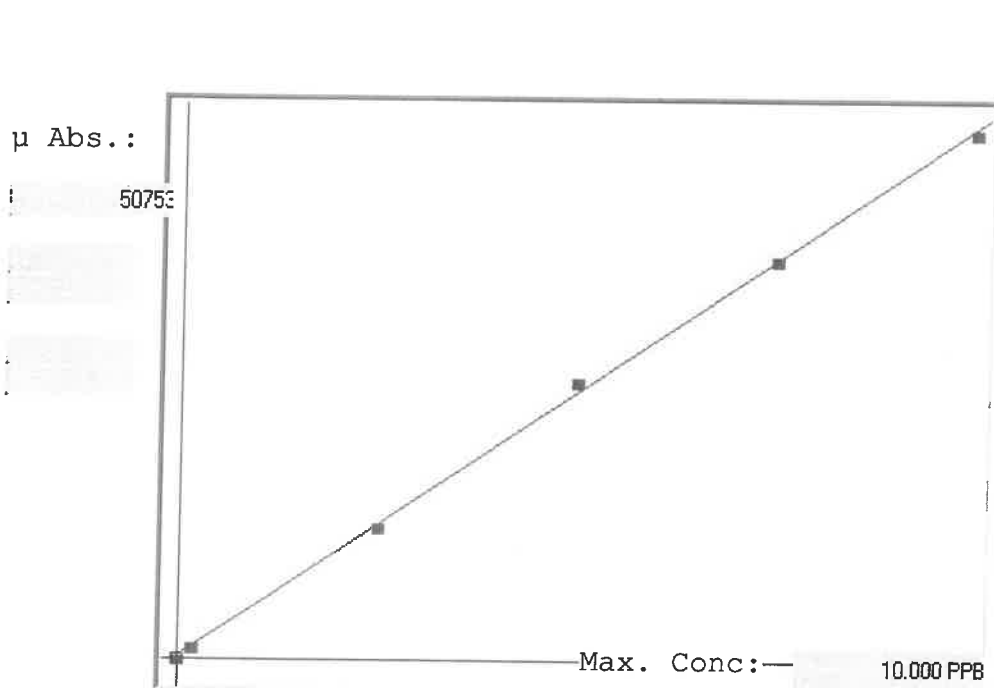


LB138165

7471B

INSTRUMENT ID: CV1



Linear

A= 0.0000e+000

B= 1.9607e-004

C= -4.7152e-002

Rho= 0.9996349

Accept=Accepted

Std ID	Conc.	Calc.	Dev.	Mean	SD or %RSD	Rep 1	Rep 2	Rep 3	Rep 4	Rep 5
0.0	0.000	-0.029	-0.029	94	0.000	94				
0.2	0.200	0.174	-0.026	1126	0.0 %	1126				
2.5	2.500	2.439	-0.061	12681	0.0 %	12681				
5.0	5.000	5.213	0.213	26826	0.0 %	26826				
7.5	7.500	7.499	-0.001	38490	0.0 %	38490				
10.0	10.000	9.904	-0.096	50753	0.0 %	50753				

LB138165 INSTRUMENT ID :: CV1

Method: 7471B

Operator: Admin

Date of Analysis: 09 Dec 2025 11:00:51

Type	Sample ID	Extended ID	Conc.	μ Abs	Units	Method	Std Conc	Date
S	0.0 - 1	50	-	94	PPB	7471B	0.0000	09 Dec 2025 11:10:34
S	0.2 - 1	50.2	-	1126	PPB	7471B	0.2000	09 Dec 2025 11:13:00
S	2.5 - 1	50.5	-	12681	PPB	7471B	2.5000	09 Dec 2025 11:15:17
S	5.0 - 1	50.5	-	26826	PPB	7471B	5.0000	09 Dec 2025 11:17:34
S	7.5 - 1	50.5	-	38490	PPB	7471B	7.5000	09 Dec 2025 11:19:50
S	10.0 - 1	50.5	-	50753	PPB	7471B	10.0000	09 Dec 2025 11:25:11
U	ICV147 - 1	ICV147	3.8826	20043	PPB	7471B		09 Dec 2025 11:28:38
U	ICB147 - 1	ICB147	-0.0677	-105	PPB	7471B		09 Dec 2025 11:30:53
U	CCV84 - 1	CCV84	5.2031	26778	PPB	7471B		09 Dec 2025 11:33:09
U	CCB84 - 1	CCB84	-0.0766	-150	PPB	7471B		09 Dec 2025 11:35:24
U	CRA - 1	CRA	0.1662	1088	PPB	7471B		09 Dec 2025 11:40:20
U	HighStd - 1	HighStd	10.1356	51935	PPB	7471B		09 Dec 2025 11:42:35
U	ChkStd - 1	ChkStd	7.0791	36346	PPB	7471B		09 Dec 2025 11:44:50
U	PB170867BL - 1	PBS	-0.0913	-225	PPB	7471B		09 Dec 2025 11:47:09
U	PB170867BS - 1	LCSS	3.2268	16698	PPB	7471B		09 Dec 2025 11:49:26
U	Q3790-01 - 1	304 FURMAN SOIL	0.9206	4936	PPB	7471B		09 Dec 2025 11:51:42
U	Q3795-01 - 1	72-11966	0.6326	3467	PPB	7471B		09 Dec 2025 11:54:00
U	Q3795-05 - 1	RBR 200059	0.0699	597	PPB	7471B		09 Dec 2025 11:56:17
U	Q3801-01 - 1	SOIL#1	0.2179	1352	PPB	7471B		09 Dec 2025 11:58:34
U	Q3801-06 - 1	SOIL#2	0.3603	2078	PPB	7471B		09 Dec 2025 12:00:49
U	CCV85 - 1	CCV85	5.3116	27331	PPB	7471B		09 Dec 2025 12:03:05
U	CCB85 - 1	CCB85	-0.0583	-57	PPB	7471B		09 Dec 2025 12:05:20
U	Q3806-01 - 1	TR-01-12-5-2025	0.1511	1011	PPB	7471B		09 Dec 2025 12:07:36
U	Q3806-04 - 1	TR-05-12-5-2025	0.4871	2725	PPB	7471B		09 Dec 2025 12:14:52
U	Q3806-04DUP - 1	TR-05-12-5-2025DUP	0.4579	2576	PPB	7471B		09 Dec 2025 12:17:07
U	Q3806-04MS - 1	TR-05-12-5-2025MS	3.7820	19530	PPB	7471B		09 Dec 2025 12:19:23
U	Q3806-04MSD - 1	TR-05-12-5-2025MSD	3.5148	18167	PPB	7471B		09 Dec 2025 12:21:38
U	Q3812-01 - 1	OR-02-120825	7.4515	38245	PPB	7471B		09 Dec 2025 12:23:57
U	Q3806-04LX5 - 1		0.0526	509	PPB	7471B		09 Dec 2025 12:32:52
U	Q3806-04A - 1		4.0142	20714	PPB	7471B		09 Dec 2025 12:38:34
U	CCV86 - 1	CCV86	5.2780	27160	PPB	7471B		09 Dec 2025 12:40:51
U	CCB86 - 1	CCB86	-0.0846	-191	PPB	7471B		09 Dec 2025 12:43:07
U	Q3741-01DLX2 - 1		3.7419	19325	PPB	7471B		09 Dec 2025 12:45:25
U	Q3741-01DUPDLX2 - 1		4.2803	22071	PPB	7471B		09 Dec 2025 12:47:40
U	Q3741-01MSDLX2 - 1		3.9115	20190	PPB	7471B		09 Dec 2025 12:52:45
U	Q3741-01MSDDLX2 - 1		3.9416	20344	PPB	7471B		09 Dec 2025 12:55:00
U	Q3741-01LDLX10 - 1		0.5728	3162	PPB	7471B		09 Dec 2025 12:58:40
U	Q3741-01ADLX2 - 1		4.0820	21060	PPB	7471B		09 Dec 2025 13:03:48
U	Q3741-02DLX5 - 1		2.9427	15249	PPB	7471B		09 Dec 2025 13:06:04
U	Q3741-03DLX5 - 1		4.6120	23763	PPB	7471B		09 Dec 2025 13:08:21
U	Q3741-04DLX5 - 1		5.7827	29734	PPB	7471B		09 Dec 2025 13:10:41
U	Q3741-06DLX5 - 1		7.7363	39698	PPB	7471B		09 Dec 2025 13:13:01
U	CCV87 - 1	CCV87	5.1232	26370	PPB	7471B		09 Dec 2025 13:15:21
U	CCB87 - 1	CCB87	-0.0685	-109	PPB	7471B		09 Dec 2025 13:17:39