

Data Path : Z:\svoasrv\HPCHEM1\BNA\_P\Data\BP120225\  
 Data File : BP026222.D  
 Acq On : 03 Dec 2025 00:47  
 Operator : RC/JU  
 Sample : Q3742-10  
 Misc :  
 ALS Vial : 16 Sample Multiplier: 1

**Instrument :**  
 BNA\_P  
**ClientSampleId :**  
 SB-1125-2

**Manual Integrations**  
**APPROVED**  
 Reviewed By :Jagrut Upadhyay 12/03/2025  
 Supervised By :Sohil Jodhani 12/03/2025

Quant Time: Dec 03 01:13:55 2025  
 Quant Method : Z:\svoasrv\HPCHEM1\BNA\_P\Methods\8270E-BP111825.M  
 Quant Title : ASP BNA STANDARDS FOR 5 POINT CALIBRATION  
 QLast Update : Wed Nov 19 01:25:31 2025  
 Response via : Initial Calibration

Compound	R.T.	QIon	Response	Conc	Units	Dev(Min)	
<b>Internal Standards</b>							
1) 1,4-Dichlorobenzene-d4	7.661	152	225904	20.000	ng	-0.01	
21) Naphthalene-d8	10.425	136	830523	20.000	ng	-0.02	
39) Acenaphthene-d10	14.290	164	498615	20.000	ng	-0.04	
64) Phenanthrene-d10	17.095	188	999235	20.000	ng	-0.04	
76) Chrysene-d12	21.536	240	1248030	20.000	ng	-0.04	
86) Perylene-d12	24.836	264	1507113	20.000	ng	-0.07	
<b>System Monitoring Compounds</b>							
5) 2-Fluorophenol	5.284	112	954049	67.787	ng	0.00	
7) Phenol-d6	6.843	99	1115707	62.269	ng	-0.01	
23) Nitrobenzene-d5	8.796	82	655442	44.828	ng	-0.02	
42) 2,4,6-Tribromophenol	15.813	330	444414	68.707	ng	-0.02	
45) 2-Fluorobiphenyl	12.896	172	1544794	45.407	ng	-0.04	
79) Terphenyl-d14	19.831	244	2684151	43.854	ng	-0.04	
<b>Target Compounds</b>							
71) Phenanthrene	17.148	178	482396	8.570	ng		99
72) Anthracene	17.237	178	177588	3.093	ng		99
75) Fluoranthene	19.231	202	982989	14.373	ng		99
78) Pyrene	19.607	202	855627	10.456	ng		99
81) Benzo(a)anthracene	21.513	228	652012m	7.607	ng		
83) Chrysene	21.583	228	524595	6.494	ng		98
87) Indeno(1,2,3-cd)pyrene	28.583	276	263347	2.330	ng	#	92
88) Benzo(b)fluoranthene	23.795	252	594654	6.479	ng		98
89) Benzo(k)fluoranthene	23.854	252	235087m	2.564	ng		
90) Benzo(a)pyrene	24.677	252	488712	5.621	ng		98
92) Benzo(g,h,i)perylene	29.712	276	225666	2.454	ng		98

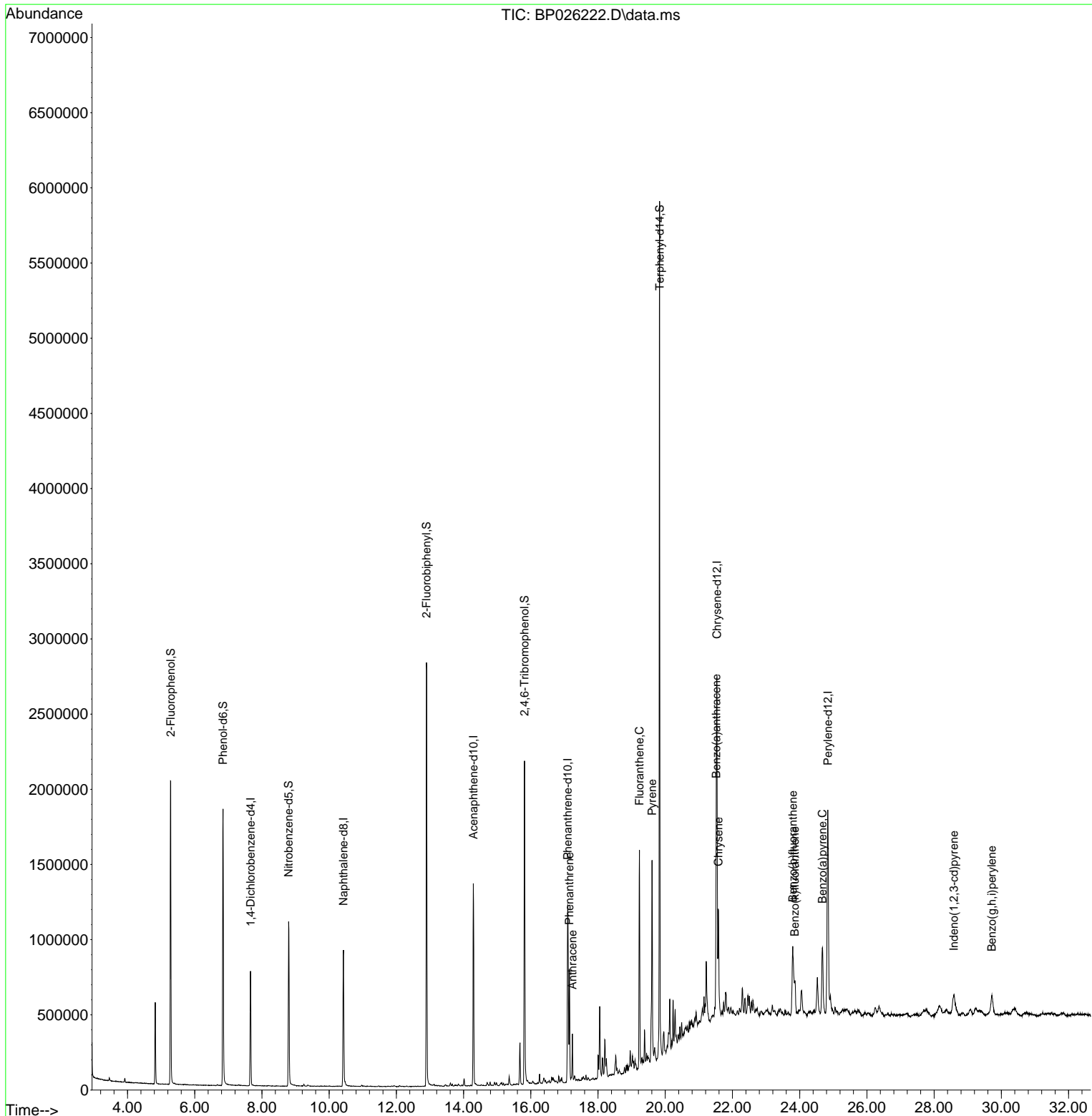
(#) = qualifier out of range (m) = manual integration (+) = signals summed

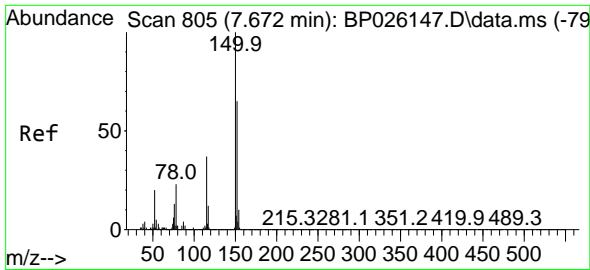
Data Path : Z:\svoasrv\HPCHEM1\BNA\_P\Data\BP120225\  
 Data File : BP026222.D  
 Acq On : 03 Dec 2025 00:47  
 Operator : RC/JU  
 Sample : Q3742-10  
 Misc :  
 ALS Vial : 16 Sample Multiplier: 1

**Instrument :**  
 BNA\_P  
**ClientSampleId :**  
 SB-1125-2

Quant Time: Dec 03 01:13:55 2025  
 Quant Method : Z:\svoasrv\HPCHEM1\BNA\_P\Methods\8270E-BP111825.M  
 Quant Title : ASP BNA STANDARDS FOR 5 POINT CALIBRATION  
 QLast Update : Wed Nov 19 01:25:31 2025  
 Response via : Initial Calibration

**Manual Integrations**  
**APPROVED**  
 Reviewed By :Jagrut Upadhyay 12/03/2025  
 Supervised By :Sohil Jodhani 12/03/2025





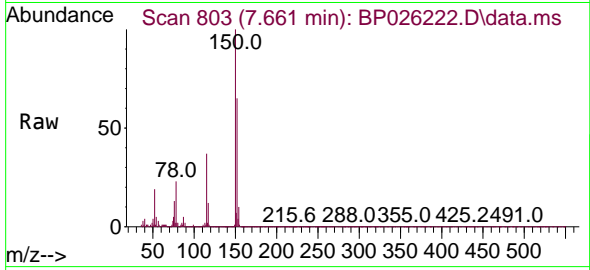
#1  
 1,4-Dichlorobenzene-d4  
 Concen: 20.000 ng  
 RT: 7.661 min Scan# 803  
 Delta R.T. -0.011 min  
 Lab File: BP026222.D  
 Acq: 03 Dec 2025 00:47

Instrument :

BNA\_P

Client Sample Id :

SB-1125-2

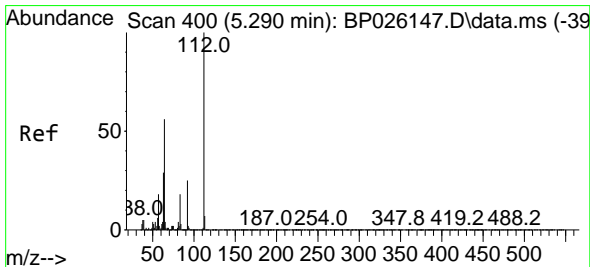
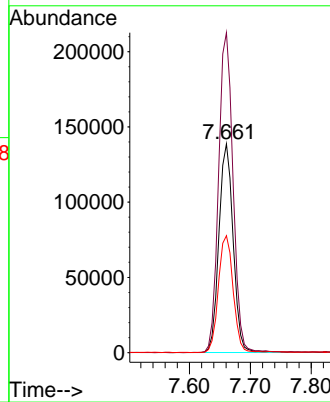
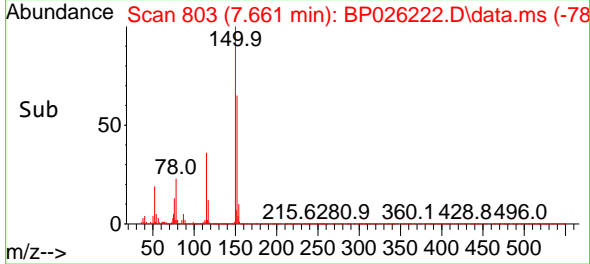


Tgt Ion:152 Resp: 225904  
 Ion Ratio Lower Upper  
 152 100  
 150 153.3 123.0 184.6  
 115 56.0 46.3 69.5

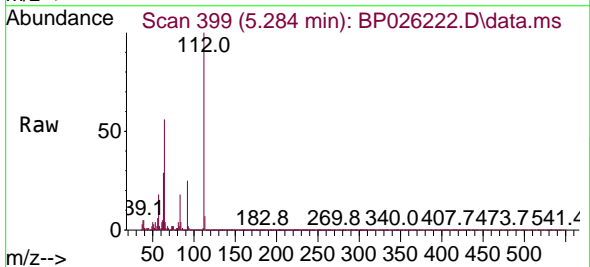
Manual Integrations

APPROVED

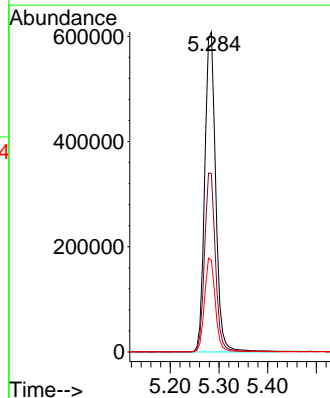
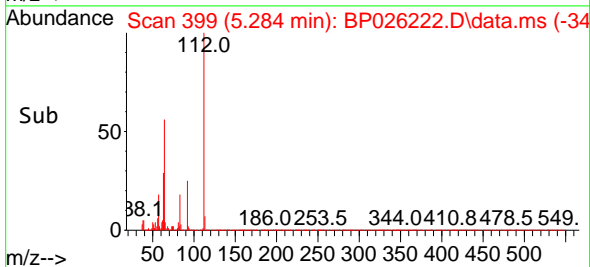
Reviewed By :Jagrut Upadhyay 12/03/2025  
 Supervised By :Sohil Jodhani 12/03/2025

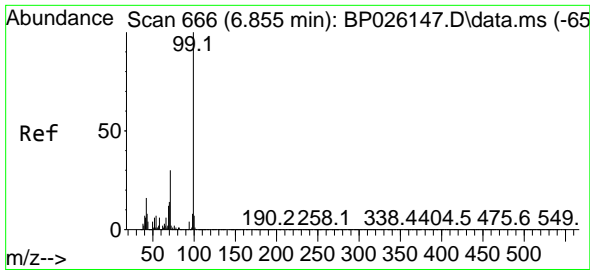


#5  
 2-Fluorophenol  
 Concen: 67.787 ng  
 RT: 5.284 min Scan# 399  
 Delta R.T. -0.006 min  
 Lab File: BP026222.D  
 Acq: 03 Dec 2025 00:47



Tgt Ion:112 Resp: 954049  
 Ion Ratio Lower Upper  
 112 100  
 64 55.7 45.8 68.6  
 63 28.6 23.5 35.3





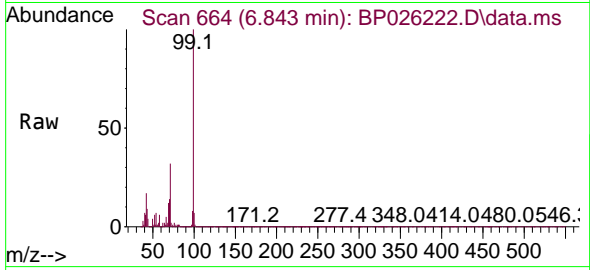
#7  
 Phenol-d6  
 Concen: 62.269 ng  
 RT: 6.843 min Scan# 60  
 Delta R.T. -0.012 min  
 Lab File: BP026222.D  
 Acq: 03 Dec 2025 00:47

Instrument :

BNA\_P

ClientSampleId :

SB-1125-2

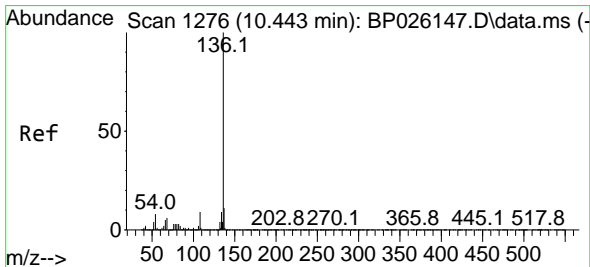
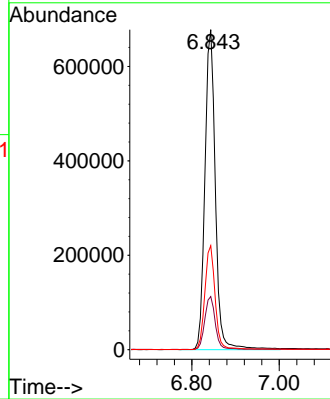
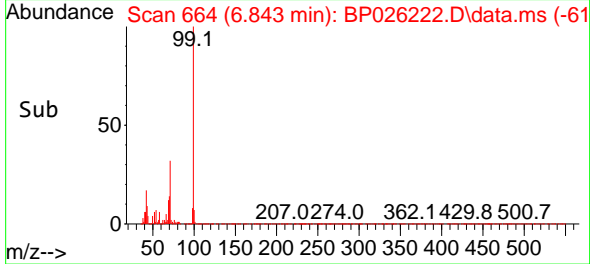


Tgt Ion: 99 Resp: 111570  
 Ion Ratio Lower Upper  
 99 100  
 42 16.6 12.9 19.3  
 71 32.5 24.8 37.2

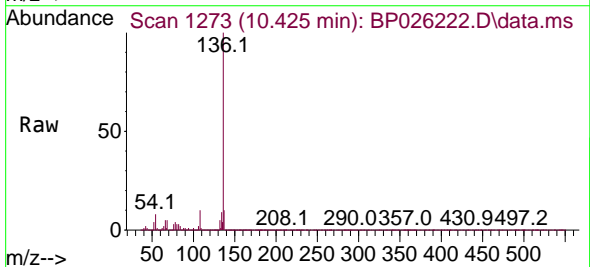
Manual Integrations

APPROVED

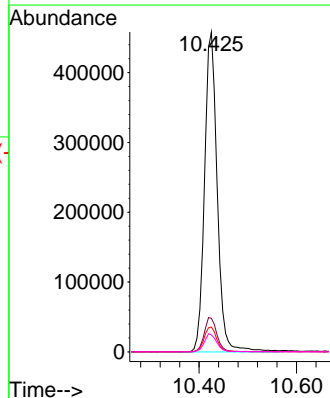
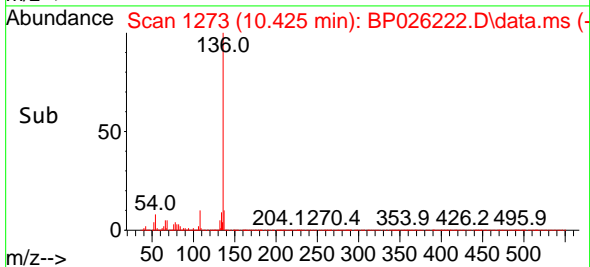
Reviewed By :Jagrut Upadhyay 12/03/2025  
 Supervised By :Sohil Jodhani 12/03/2025

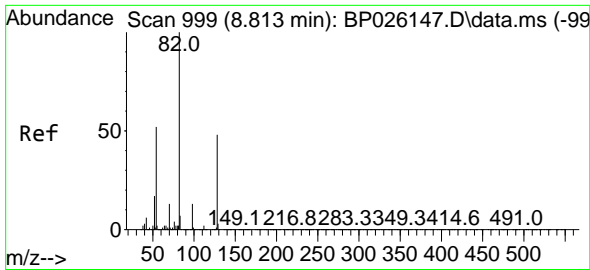


#21  
 Naphthalene-d8  
 Concen: 20.000 ng  
 RT: 10.425 min Scan# 1273  
 Delta R.T. -0.023 min  
 Lab File: BP026222.D  
 Acq: 03 Dec 2025 00:47



Tgt Ion:136 Resp: 830523  
 Ion Ratio Lower Upper  
 136 100  
 137 10.5 8.7 13.1  
 54 7.8 6.4 9.6  
 68 5.3 4.9 7.3





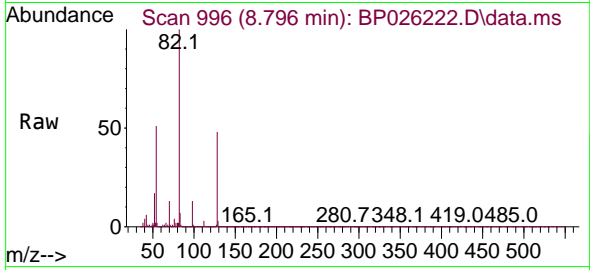
#23  
 Nitrobenzene-d5  
 Concen: 44.828 ng  
 RT: 8.796 min Scan# 999  
 Delta R.T. -0.017 min  
 Lab File: BP026222.D  
 Acq: 03 Dec 2025 00:47

Instrument :

BNA\_P

Client SampleId :

SB-1125-2

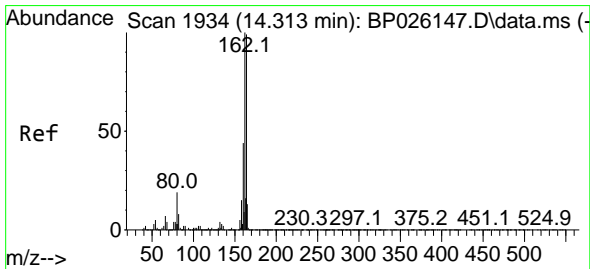
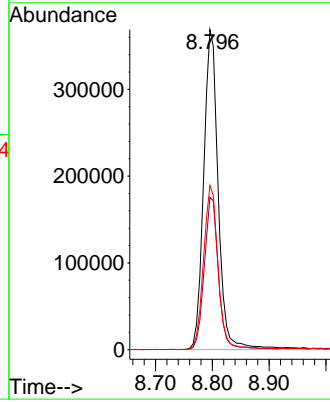
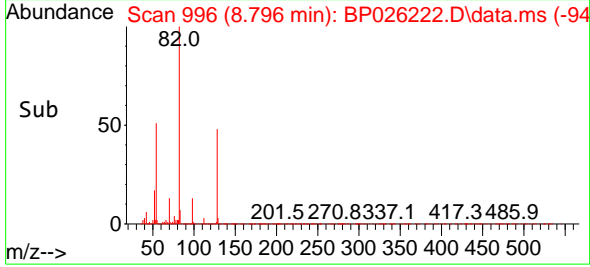


Tgt Ion: 82 Resp: 65544  
 Ion Ratio Lower Upper  
 82 100  
 128 47.6 37.4 56.0  
 54 51.3 41.6 62.4

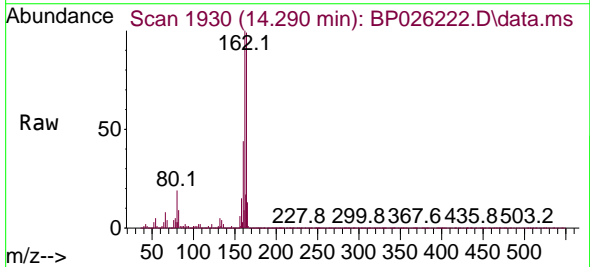
Manual Integrations

APPROVED

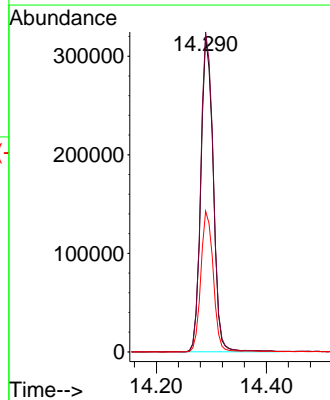
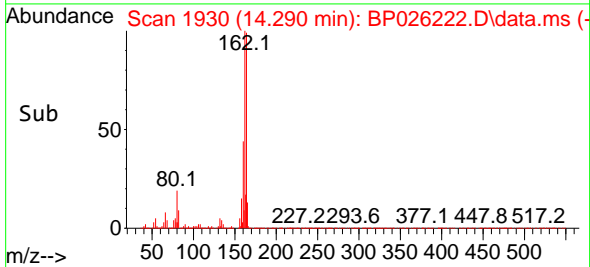
Reviewed By :Jagrut Upadhyay 12/03/2025  
 Supervised By :Sohil Jodhani 12/03/2025

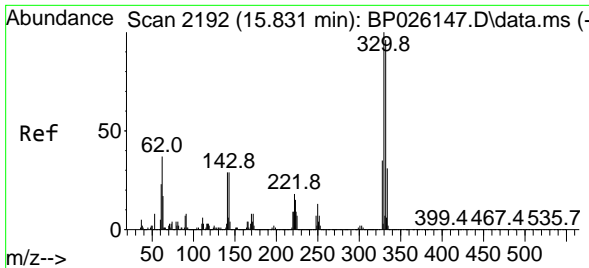


#39  
 Acenaphthene-d10  
 Concen: 20.000 ng  
 RT: 14.290 min Scan# 1930  
 Delta R.T. -0.035 min  
 Lab File: BP026222.D  
 Acq: 03 Dec 2025 00:47



Tgt Ion:164 Resp: 498615  
 Ion Ratio Lower Upper  
 164 100  
 162 101.3 80.3 120.5  
 160 44.6 35.2 52.8





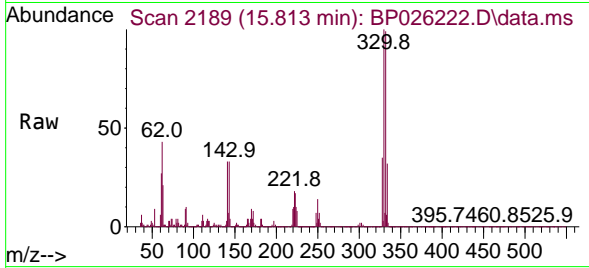
#42  
 2,4,6-Tribromophenol  
 Concen: 68.707 ng  
 RT: 15.813 min Scan# 2192  
 Delta R.T. -0.023 min  
 Lab File: BP026222.D  
 Acq: 03 Dec 2025 00:47

Instrument :

BNA\_P

Client SampleID :

SB-1125-2

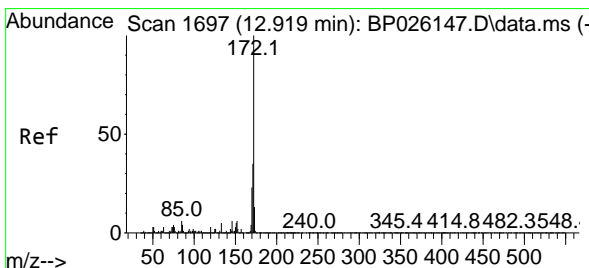
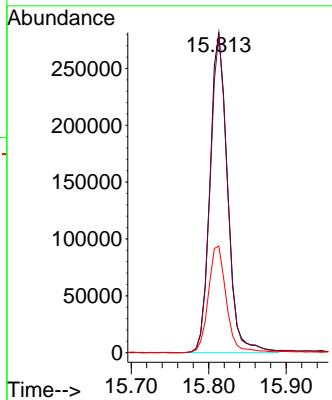
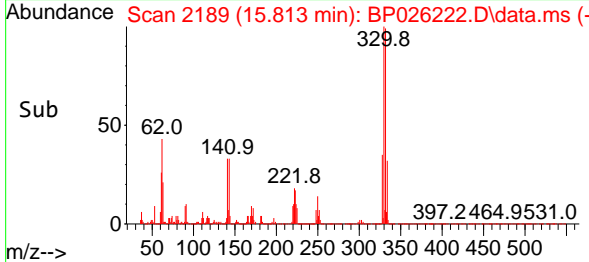


Tgt Ion: 330 Resp: 444414  
 Ion Ratio Lower Upper  
 330 100  
 332 98.4 78.0 117.0  
 141 33.8 26.8 40.2

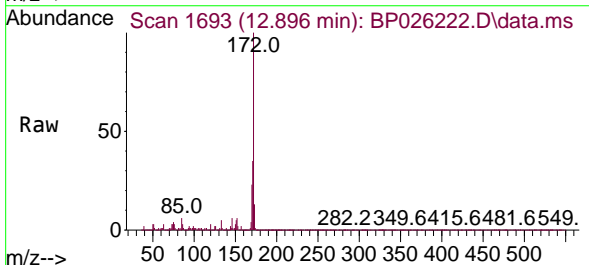
Manual Integrations

APPROVED

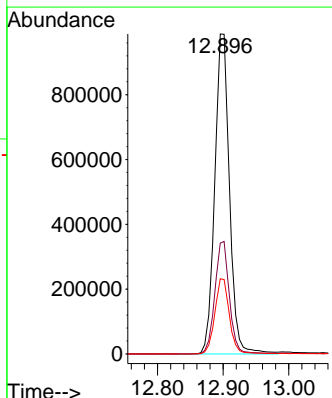
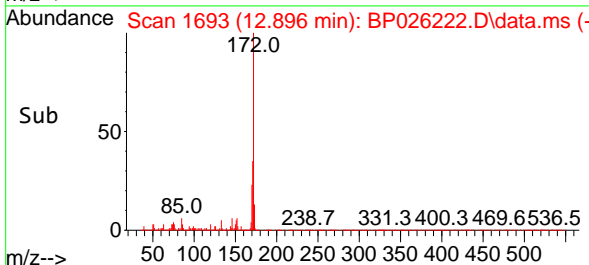
Reviewed By :Jagrut Upadhyay 12/03/2025  
 Supervised By :Sohil Jodhani 12/03/2025

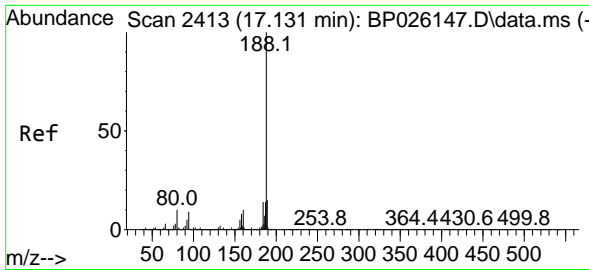


#45  
 2-Fluorobiphenyl  
 Concen: 45.407 ng  
 RT: 12.896 min Scan# 1693  
 Delta R.T. -0.035 min  
 Lab File: BP026222.D  
 Acq: 03 Dec 2025 00:47



Tgt Ion: 172 Resp: 1544794  
 Ion Ratio Lower Upper  
 172 100  
 171 34.6 28.2 42.4  
 170 23.5 18.7 28.1





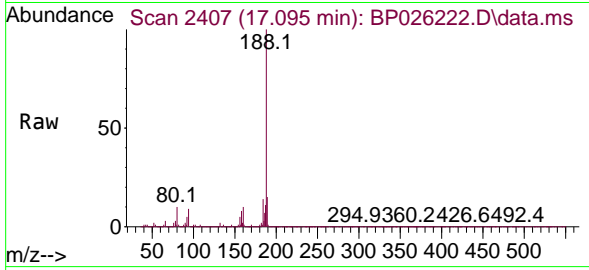
#64  
 Phenanthrene-d10  
 Concen: 20.000 ng  
 RT: 17.095 min Scan# 2416  
 Delta R.T. -0.035 min  
 Lab File: BP026222.D  
 Acq: 03 Dec 2025 00:47

Instrument :

BNA\_P

Client Sample Id :

SB-1125-2

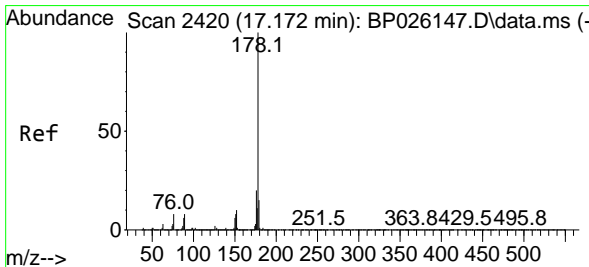
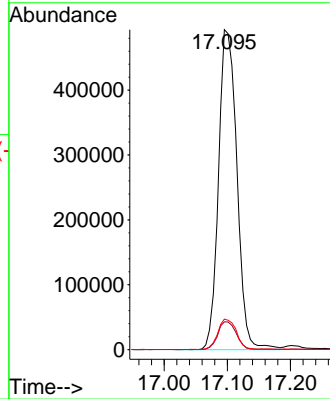
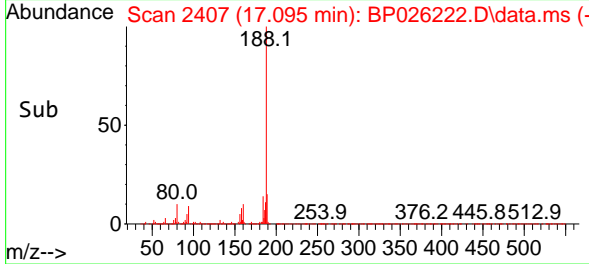


Tgt Ion:188 Resp: 999235  
 Ion Ratio Lower Upper  
 188 100  
 94 8.7 7.8 11.6  
 80 9.5 8.2 12.2

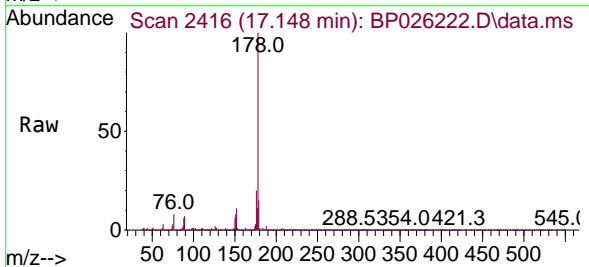
Manual Integrations

APPROVED

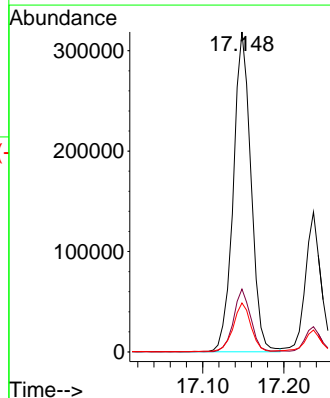
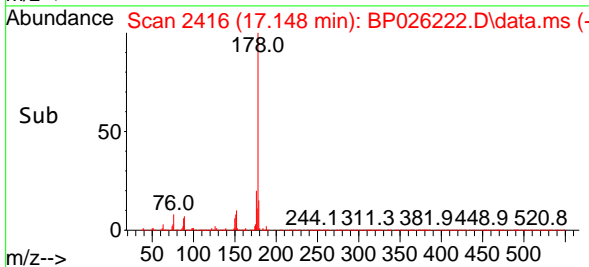
Reviewed By :Jagrut Upadhyay 12/03/2025  
 Supervised By :Sohil Jodhani 12/03/2025

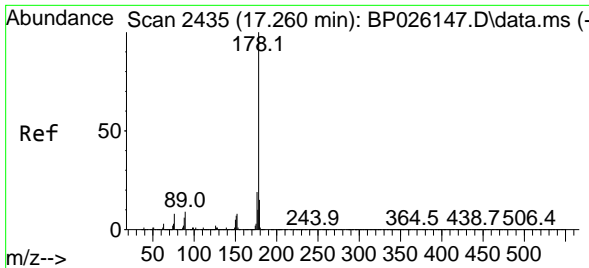


#71  
 Phenanthrene  
 Concen: 8.570 ng  
 RT: 17.148 min Scan# 2416  
 Delta R.T. -0.029 min  
 Lab File: BP026222.D  
 Acq: 03 Dec 2025 00:47



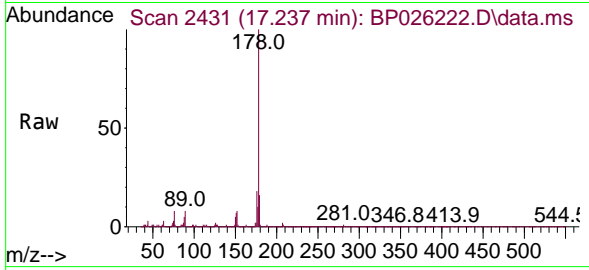
Tgt Ion:178 Resp: 482396  
 Ion Ratio Lower Upper  
 178 100  
 176 19.6 15.4 23.2  
 179 15.3 12.4 18.6





#72  
 Anthracene  
 Concen: 3.093 ng  
 RT: 17.237 min Scan# 2431  
 Delta R.T. -0.035 min  
 Lab File: BP026222.D  
 Acq: 03 Dec 2025 00:47

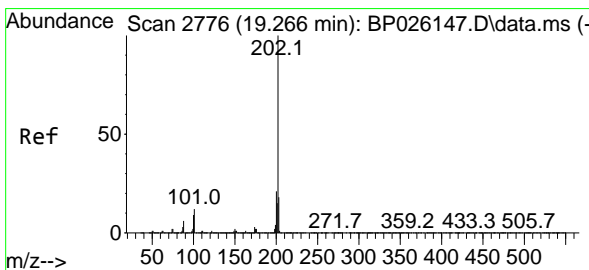
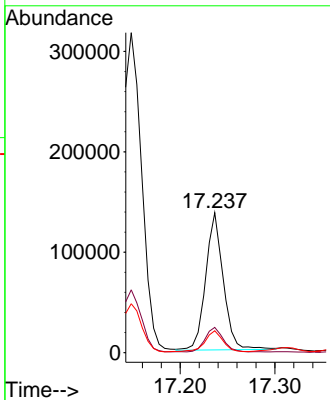
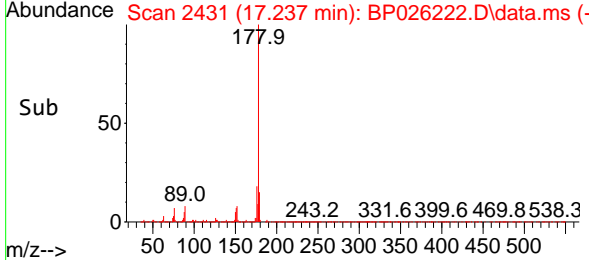
Instrument : BNA\_P  
 Client Sample Id : SB-1125-2



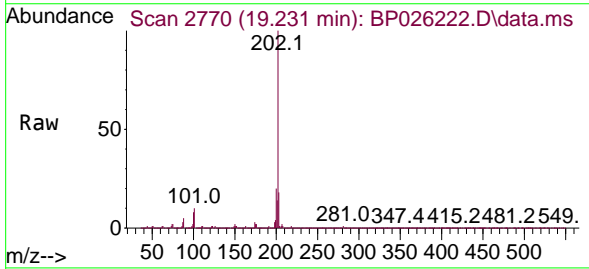
Tgt Ion: 178 Resp: 177588

Ion	Ratio	Lower	Upper
178	100		
176	18.0	14.8	22.2
179	15.6	12.2	18.4

Manual Integrations  
**APPROVED**  
 Reviewed By : Jagrut Upadhyay 12/03/2025  
 Supervised By : Sohil Jodhani 12/03/2025

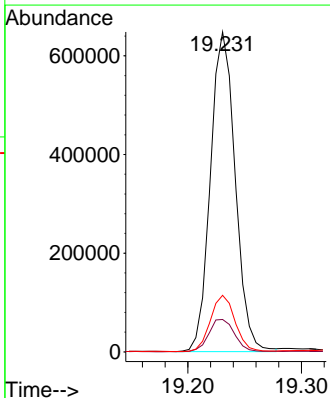
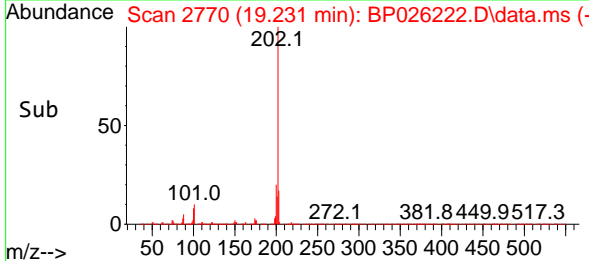


#75  
 Fluoranthene  
 Concen: 14.373 ng  
 RT: 19.231 min Scan# 2770  
 Delta R.T. -0.035 min  
 Lab File: BP026222.D  
 Acq: 03 Dec 2025 00:47

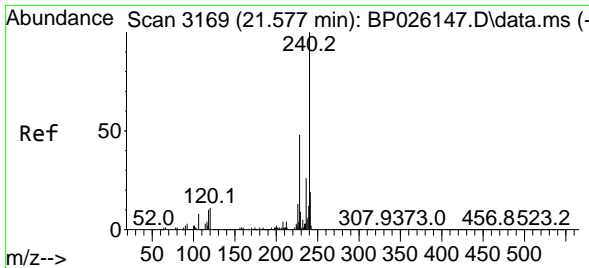


Tgt Ion: 202 Resp: 982989

Ion	Ratio	Lower	Upper
202	100		
101	10.1	0.0	31.2
203	17.7	0.0	37.7







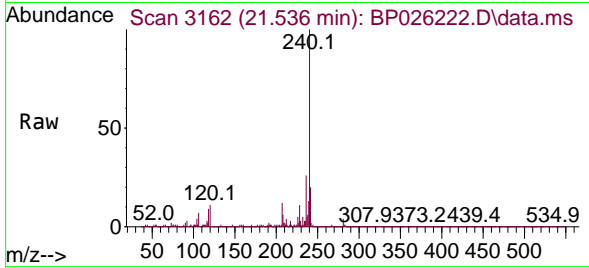
#76  
 Chrysene-d12  
 Concen: 20.000 ng  
 RT: 21.536 min Scan# 3162  
 Delta R.T. -0.035 min  
 Lab File: BP026222.D  
 Acq: 03 Dec 2025 00:47

Instrument :

BNA\_P

Client Sampled :

SB-1125-2

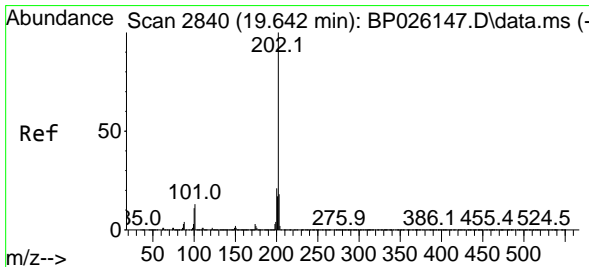
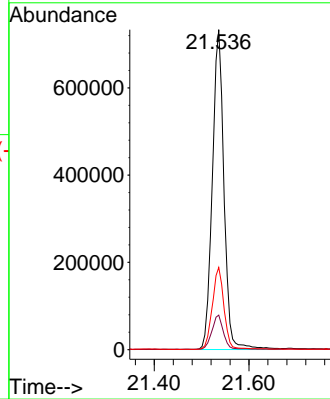
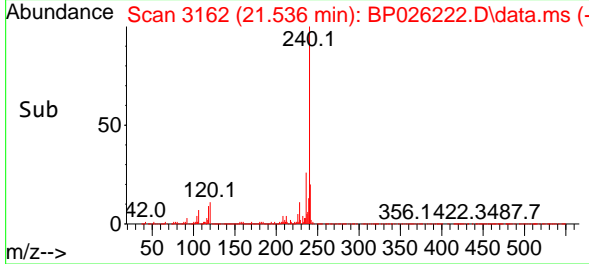


Tgt Ion:240 Resp: 1248036  
 Ion Ratio Lower Upper  
 240 100  
 120 10.8 9.0 13.4  
 236 25.7 20.4 30.6

Manual Integrations

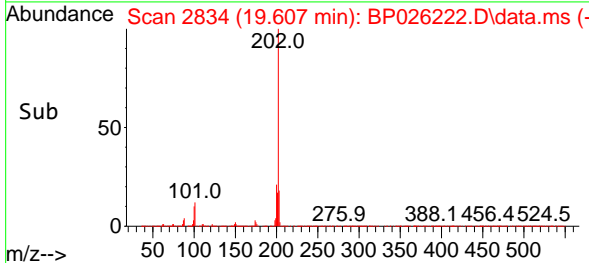
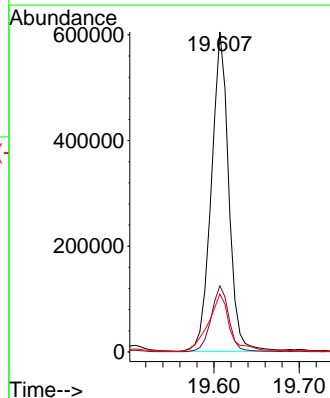
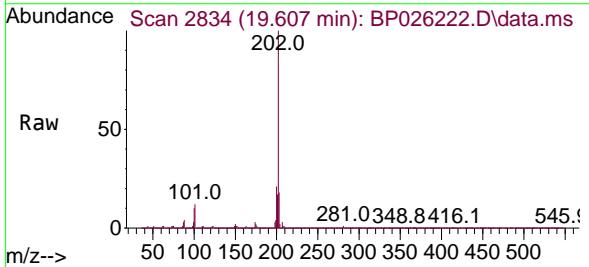
APPROVED

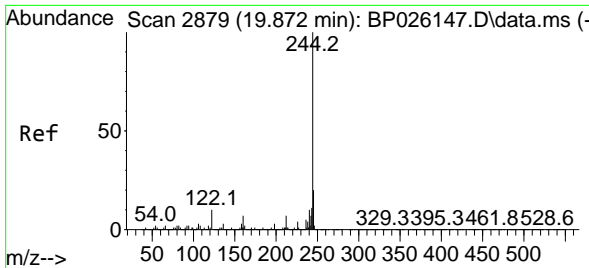
Reviewed By :Jagrut Upadhyay 12/03/2025  
 Supervised By :Sohil Jodhani 12/03/2025



#78  
 Pyrene  
 Concen: 10.456 ng  
 RT: 19.607 min Scan# 2834  
 Delta R.T. -0.035 min  
 Lab File: BP026222.D  
 Acq: 03 Dec 2025 00:47

Tgt Ion:202 Resp: 855627  
 Ion Ratio Lower Upper  
 202 100  
 200 20.6 16.9 25.3  
 203 18.0 13.8 20.8





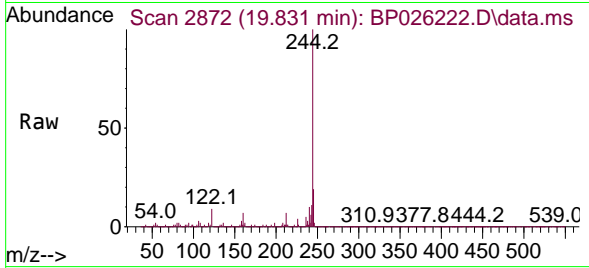
#79  
 Terphenyl-d14  
 Concen: 43.854 ng  
 RT: 19.831 min Scan# 2872  
 Delta R.T. -0.041 min  
 Lab File: BP026222.D  
 Acq: 03 Dec 2025 00:47

Instrument :

BNA\_P

Client Sample Id :

SB-1125-2

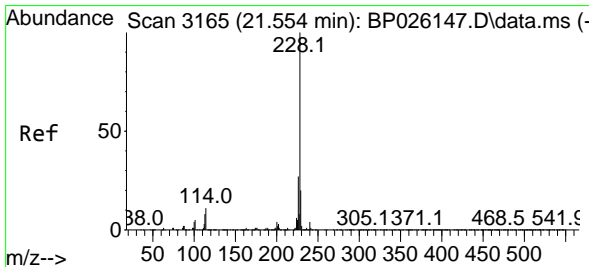
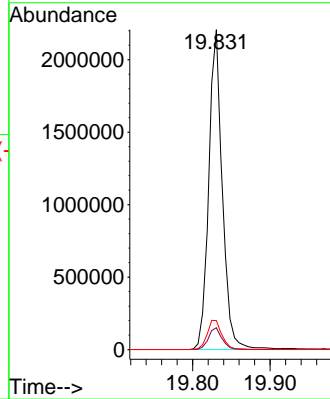
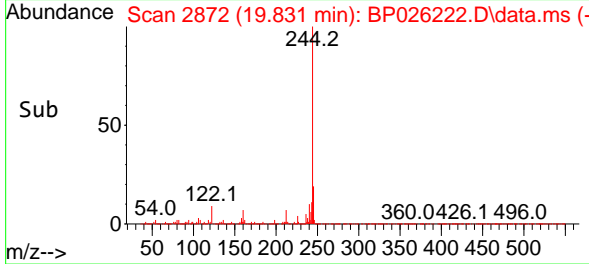


Tgt Ion: 244 Resp: 268415  
 Ion Ratio Lower Upper  
 244 100  
 212 6.8 5.8 8.8  
 122 9.1 8.2 12.2

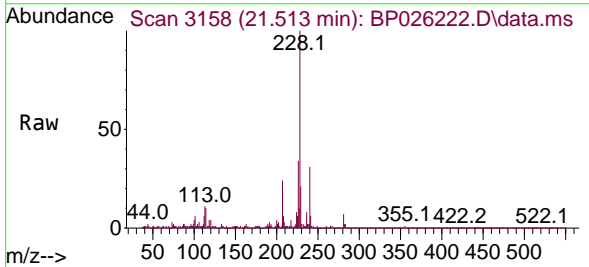
Manual Integrations

APPROVED

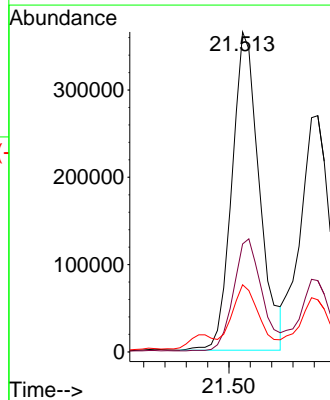
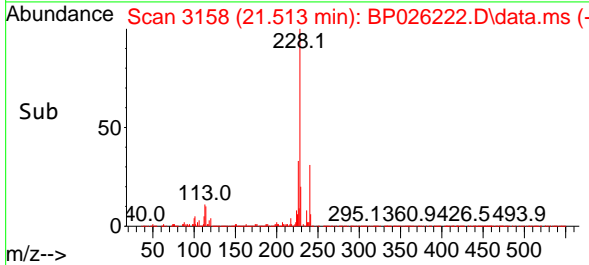
Reviewed By : Jagrut Upadhyay 12/03/2025  
 Supervised By : Sohil Jodhani 12/03/2025

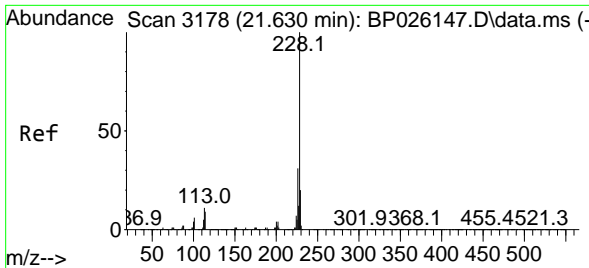


#81  
 Benzo(a)anthracene  
 Concen: 7.607 ng m  
 RT: 21.513 min Scan# 3158  
 Delta R.T. -0.041 min  
 Lab File: BP026222.D  
 Acq: 03 Dec 2025 00:47



Tgt Ion: 228 Resp: 652012  
 Ion Ratio Lower Upper  
 228 100  
 226 33.8 21.8 32.8#  
 229 21.0 15.9 23.9





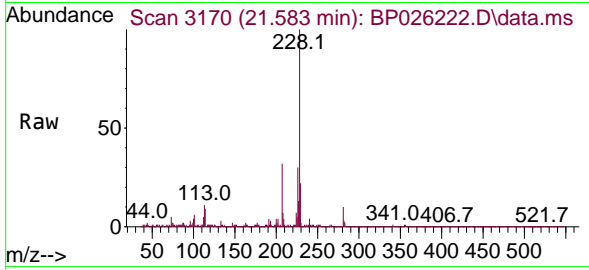
#83  
 Chrysene  
 Concen: 6.494 ng  
 RT: 21.583 min Scan# 3170  
 Delta R.T. -0.035 min  
 Lab File: BP026222.D  
 Acq: 03 Dec 2025 00:47

Instrument :

BNA\_P

Client Sample Id :

SB-1125-2

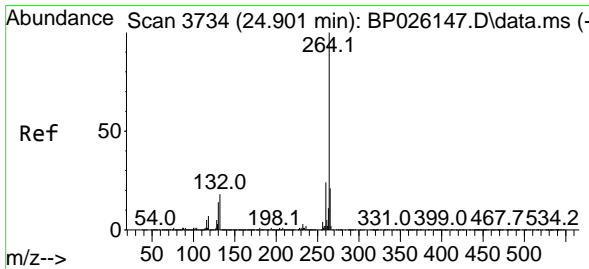
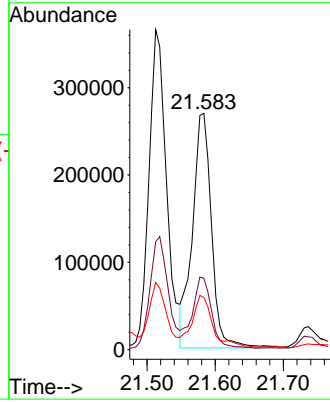
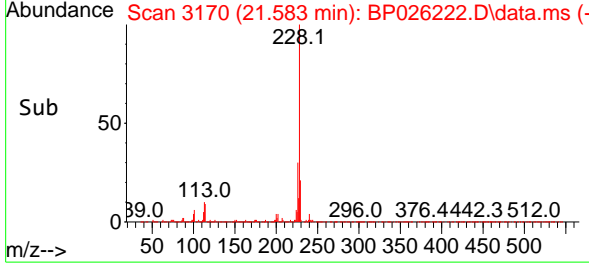


Tgt Ion: 228 Resp: 524595  
 Ion Ratio Lower Upper  
 228 100  
 226 30.2 23.9 35.9  
 229 22.1 15.9 23.9

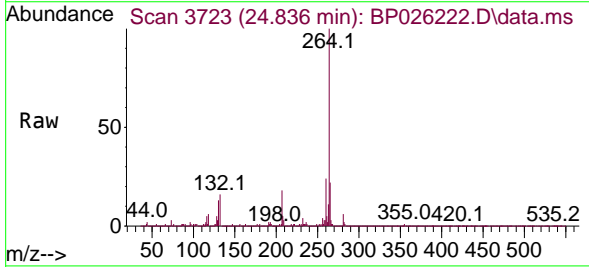
Manual Integrations

APPROVED

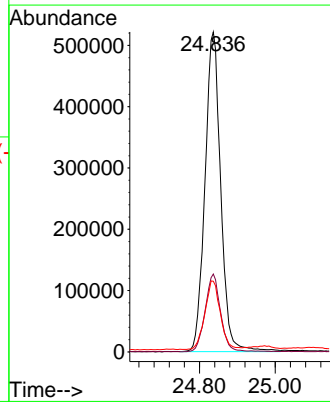
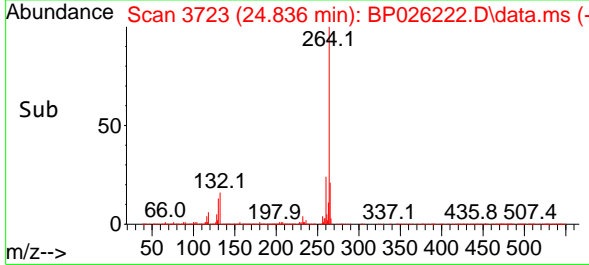
Reviewed By : Jagrut Upadhyay 12/03/2025  
 Supervised By : Sohil Jodhani 12/03/2025

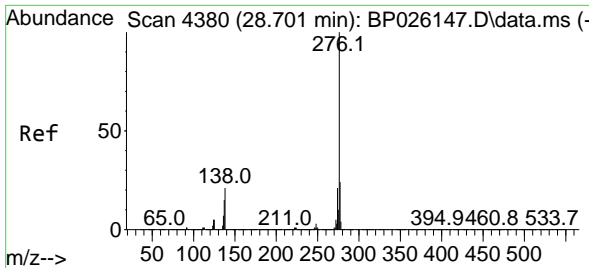


#86  
 Perylene-d12  
 Concen: 20.000 ng  
 RT: 24.836 min Scan# 3723  
 Delta R.T. -0.070 min  
 Lab File: BP026222.D  
 Acq: 03 Dec 2025 00:47



Tgt Ion: 264 Resp: 1507113  
 Ion Ratio Lower Upper  
 264 100  
 260 24.3 18.7 28.1  
 265 22.1 17.5 26.3





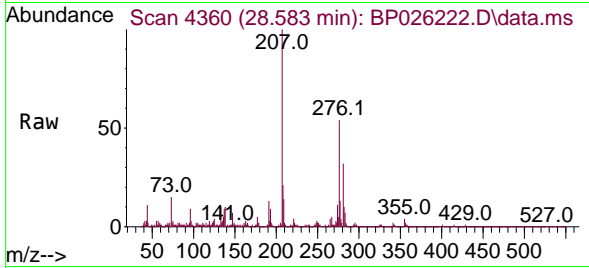
#87  
 Indeno(1,2,3-cd)pyrene  
 Concen: 2.330 ng  
 RT: 28.583 min Scan# 4380  
 Delta R.T. -0.123 min  
 Lab File: BP026222.D  
 Acq: 03 Dec 2025 00:47

Instrument :

BNA\_P

Client SampleID :

SB-1125-2

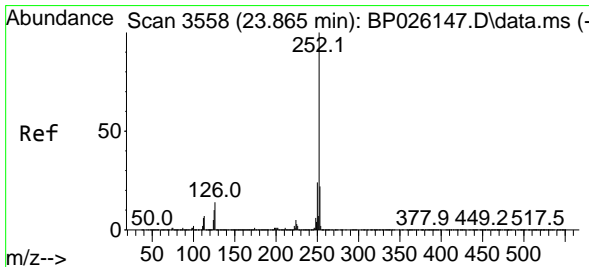
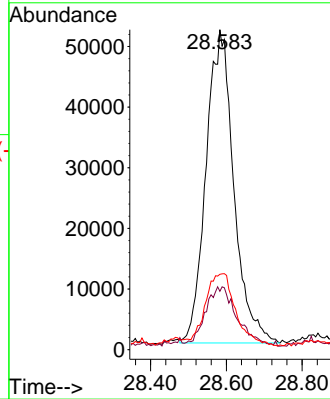
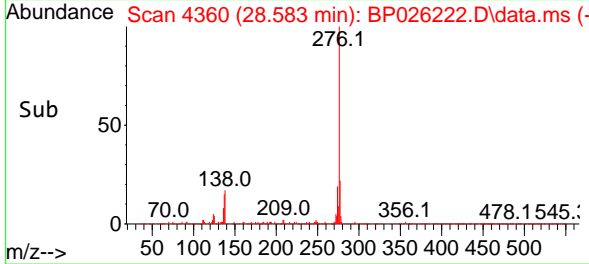


Tgt Ion: 276 Resp: 26334  
 Ion Ratio Lower Upper  
 276 100  
 138 20.0 13.8 20.8  
 277 25.1 16.7 25.1

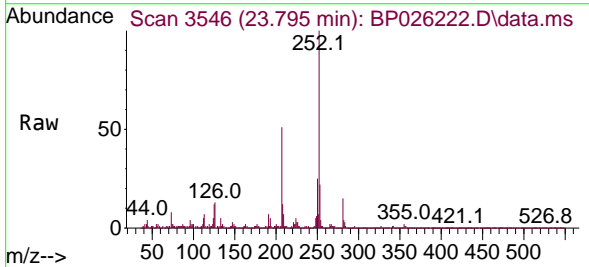
Manual Integrations

APPROVED

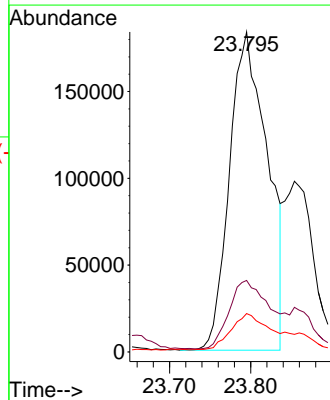
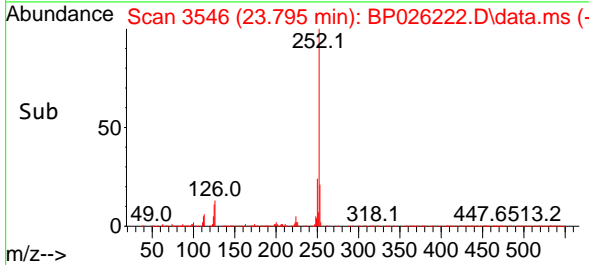
Reviewed By :Jagrut Upadhyay 12/03/2025  
 Supervised By :Sohil Jodhani 12/03/2025

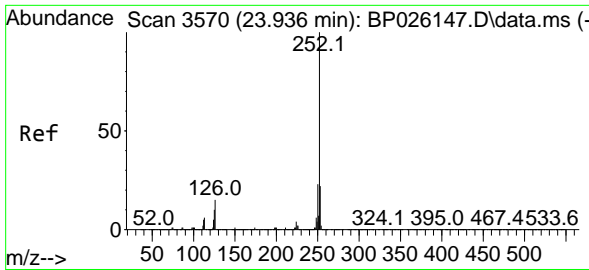


#88  
 Benzo(b)fluoranthene  
 Concen: 6.479 ng  
 RT: 23.795 min Scan# 3546  
 Delta R.T. -0.070 min  
 Lab File: BP026222.D  
 Acq: 03 Dec 2025 00:47



Tgt Ion: 252 Resp: 594654  
 Ion Ratio Lower Upper  
 252 100  
 253 22.3 17.6 26.4  
 125 12.0 8.2 12.4





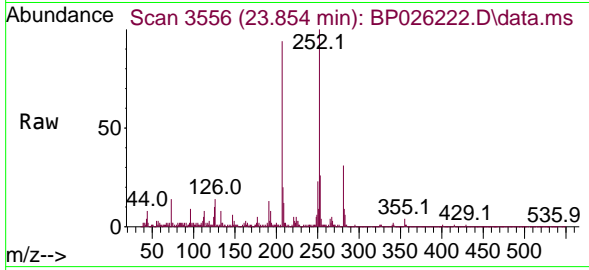
#89  
 Benzo(k)fluoranthene  
 Concen: 2.564 ng m  
 RT: 23.854 min Scan# 31  
 Delta R.T. -0.082 min  
 Lab File: BP026222.D  
 Acq: 03 Dec 2025 00:47

Instrument :

BNA\_P

ClientSampleId :

SB-1125-2

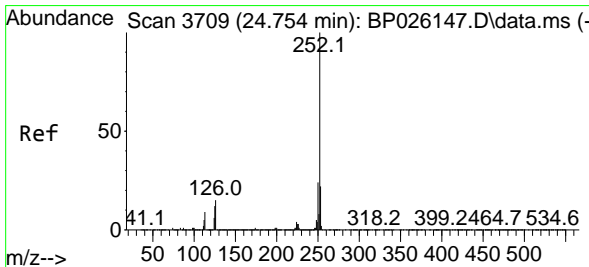
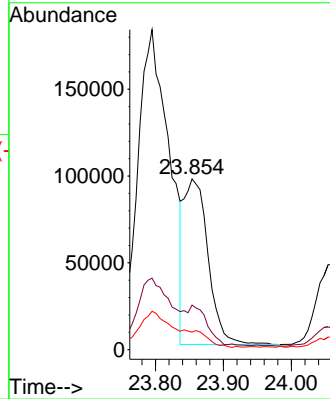
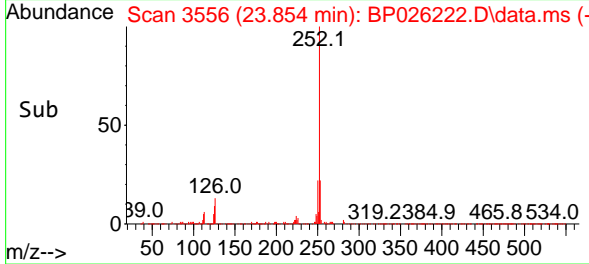


Tgt Ion:252 Resp: 23508  
 Ion Ratio Lower Upper  
 252 100  
 253 26.1 17.6 26.4  
 125 10.3 7.5 11.3

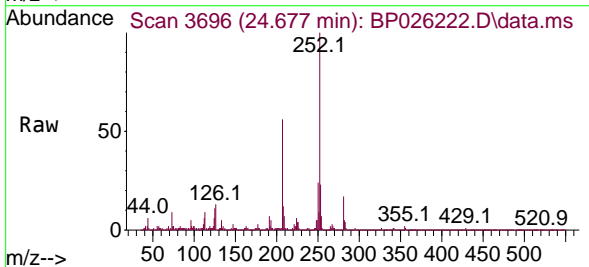
Manual Integrations

APPROVED

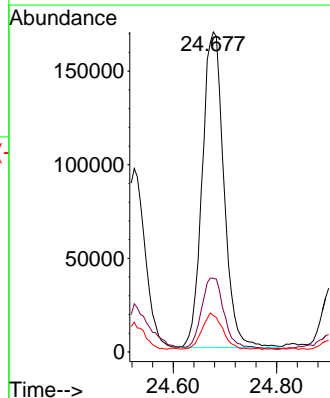
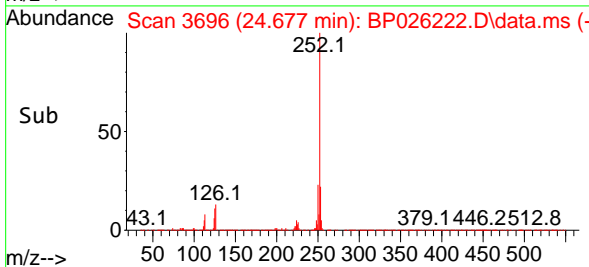
Reviewed By :Jagrut Upadhyay 12/03/2025  
 Supervised By :Sohil Jodhani 12/03/2025

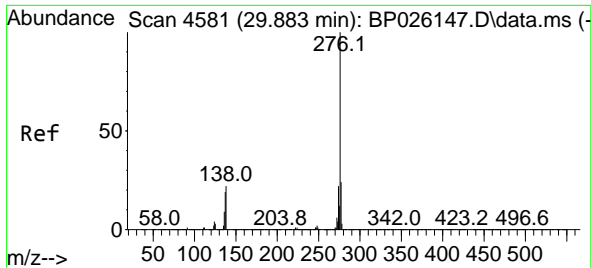


#90  
 Benzo(a)pyrene  
 Concen: 5.621 ng  
 RT: 24.677 min Scan# 3696  
 Delta R.T. -0.076 min  
 Lab File: BP026222.D  
 Acq: 03 Dec 2025 00:47



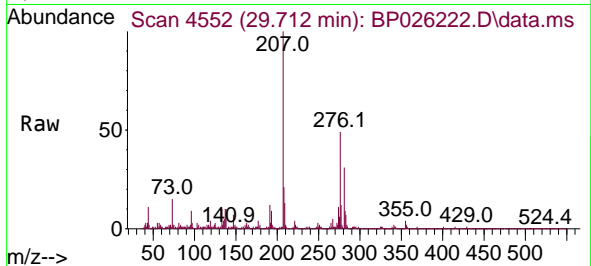
Tgt Ion:252 Resp: 488712  
 Ion Ratio Lower Upper  
 252 100  
 253 23.0 17.4 26.2  
 125 11.4 9.0 13.6





#92  
 Benzo(g,h,i)perylene  
 Concen: 2.454 ng  
 RT: 29.712 min Scan# 4552  
 Delta R.T. -0.170 min  
 Lab File: BP026222.D  
 Acq: 03 Dec 2025 00:47

Instrument :  
 BNA\_P  
 Client Sample Id :  
 SB-1125-2



Tgt Ion: 276 Resp: 225666  
 Ion Ratio Lower Upper  
 276 100  
 277 24.0 18.8 28.2  
 138 20.8 17.8 26.6

Manual Integrations  
 APPROVED

Reviewed By :Jagrut Upadhyay 12/03/2025  
 Supervised By :Sohil Jodhani 12/03/2025

