

Data Path : Z:\svoasrv\HPCHEM1\BNA_F\Data\BF120225\
 Data File : BF144403.D
 Acq On : 02 Dec 2025 15:20
 Operator : RC/JU
 Sample : Q3742-07
 Misc :
 ALS Vial : 7 Sample Multiplier: 1

Instrument :
 BNA_F
 ClientSampleId :
 SB-1125-18

Integration Parameters: rteint.p

Integrator: RTE
 Smoothing : ON
 Sampling : 1
 Start Thrs: 0.2
 Stop Thrs : 0

Filtering: 5
 Min Area: 3 % of largest Peak
 Max Peaks: 100
 Peak Location: TOP

If leading or trailing edge < 100 prefer < Baseline drop else tangent >
 Peak separation: 5

Method : Z:\svoasrv\HPCHEM1\BNA_F\Methods\8270-BF110525.M
 Title : ASP BNA STANDARDS FOR 5 POINT CALIBRATION

Signal : TIC: BF144403.D\data.ms

peak #	R.T. min	first scan	max scan	last scan	PK TY	peak height	corr. area	corr. % max.	% of total
1	3.922	288	294	307	rVB	38177	63527	9.54%	0.831%
2	5.069	482	489	496	rBV	131524	192766	28.94%	2.523%
3	5.487	555	560	577	rVB	453806	627710	94.25%	8.215%
4	6.110	660	666	671	rBV5	6681	13778	2.07%	0.180%
5	6.163	671	675	679	rVB	6545	8482	1.27%	0.111%
6	6.293	692	697	701	rBV3	6634	11006	1.65%	0.144%
7	6.393	710	714	722	rBV5	8066	17720	2.66%	0.232%
8	6.493	726	731	745	rBV	456839	657167	98.67%	8.601%
9	6.598	745	749	753	rVV5	7722	14419	2.16%	0.189%
10	6.634	753	755	761	rVB4	5023	7450	1.12%	0.098%
11	6.863	789	794	799	rVB	195141	250016	37.54%	3.272%
12	6.969	806	812	815	rBV5	6896	12188	1.83%	0.160%
13	6.998	815	817	821	rVB	11150	12894	1.94%	0.169%
14	7.128	835	839	843	rVB4	9157	14056	2.11%	0.184%
15	7.251	856	860	861	rVV3	7081	8334	1.25%	0.109%
16	7.281	861	865	871	rVB2	18984	32998	4.95%	0.432%
17	7.387	877	883	885	rBV4	13081	23652	3.55%	0.310%
18	7.422	885	889	897	rVV	293308	380186	57.08%	4.976%
19	7.498	897	902	906	rVB4	12790	21341	3.20%	0.279%
20	7.551	906	911	914	rBV6	4718	7339	1.10%	0.096%
21	7.663	927	930	938	rVB6	11420	21195	3.18%	0.277%
22	7.781	947	950	957	rVB6	12643	16415	2.46%	0.215%
23	7.887	964	968	972	rBV5	5502	9593	1.44%	0.126%
24	7.957	976	980	984	rBV5	6607	9394	1.41%	0.123%
25	8.016	985	990	992	rBV5	6845	10350	1.55%	0.135%
26	8.145	1005	1012	1019	rBV	242045	351765	52.81%	4.604%
27	8.228	1024	1026	1033	rVB7	5649	7022	1.05%	0.092%
28	8.345	1043	1046	1048	rBV2	6755	8159	1.23%	0.107%
29	8.428	1057	1060	1066	rVB5	13539	19454	2.92%	0.255%
30	8.487	1067	1070	1073	rBV5	5907	7655	1.15%	0.100%
31	8.557	1079	1082	1093	rVB3	31841	63797	9.58%	0.835%
32	8.681	1100	1103	1108	rBV6	7222	11271	1.69%	0.148%
33	8.922	1141	1144	1150	rBV7	5047	10287	1.54%	0.135%
34	9.016	1157	1160	1163	rBV3	8121	12373	1.86%	0.162%
35	9.051	1163	1166	1169	rVB2	10860	12934	1.94%	0.169%
36	9.098	1170	1174	1176	rBV3	6287	9474	1.42%	0.124%

Data Path : Z:\svoasrv\HPCHEM1\BNA_F\Data\BF120225\
 Data File : BF144403.D
 Acq On : 02 Dec 2025 15:20
 Operator : RC/JU
 Sample : Q3742-07
 Misc :
 ALS Vial : 7 Sample Multiplier: 1

Instrument :
 BNA_F
 ClientSampleId :
 SB-1125-18

Integration Parameters: rteint.p
 Integrator: RTE
 Smoothing : ON
 Sampling : 1
 Start Thrs: 0.2
 Stop Thrs : 0
 Filtering: 5
 Min Area: 3 % of largest Peak
 Max Peaks: 100
 Peak Location: TOP

If leading or trailing edge < 100 prefer < Baseline drop else tangent >
 Peak separation: 5

Method : Z:\svoasrv\HPCHEM1\BNA_F\Methods\8270-BF110525.M
 Title : ASP BNA STANDARDS FOR 5 POINT CALIBRATION

37	9.157	1177	1184	1189	rVV	42297	61247	9.20%	0.802%
38	9.216	1189	1194	1200	rBV	537045	666040	100.00%	8.717%
39	9.298	1203	1208	1212	rBV3	16445	27622	4.15%	0.362%
40	9.557	1249	1252	1257	rVB3	11080	15951	2.39%	0.209%
41	9.616	1257	1262	1265	rBV3	55111	78838	11.84%	1.032%
42	9.763	1283	1287	1290	rBV2	19805	25432	3.82%	0.333%
43	9.804	1291	1294	1298	rVB2	14448	20721	3.11%	0.271%
44	9.898	1305	1310	1315	rBV	255484	320454	48.11%	4.194%
45	10.151	1349	1353	1360	rVB4	18395	31668	4.75%	0.414%
46	10.216	1361	1364	1367	rBV3	10401	15212	2.28%	0.199%
47	10.304	1376	1379	1385	rBV7	14464	23653	3.55%	0.310%
48	10.545	1415	1420	1426	rBV	53230	82897	12.45%	1.085%
49	10.610	1428	1431	1435	rVB	34464	45748	6.87%	0.599%
50	10.692	1440	1445	1455	rVV	294821	400827	60.18%	5.246%
51	10.810	1459	1465	1473	rVB2	99088	169975	25.52%	2.225%
52	11.251	1537	1540	1542	rBV	27553	37940	5.70%	0.497%
53	11.275	1542	1544	1551	rVB	57300	78688	11.81%	1.030%
54	11.392	1559	1564	1572	rBV	238168	339042	50.90%	4.437%
55	11.539	1586	1589	1594	rBV	28600	39516	5.93%	0.517%
56	11.916	1648	1653	1659	rBV2	87624	147394	22.13%	1.929%
57	12.133	1686	1690	1693	rBV	76723	104365	15.67%	1.366%
58	12.169	1694	1696	1702	rVB2	60945	75835	11.39%	0.992%
59	12.504	1750	1753	1758	rVB2	43722	52831	7.93%	0.691%
60	12.610	1768	1771	1782	rBV2	39450	85580	12.85%	1.120%
61	12.704	1784	1787	1794	rVB3	41379	65362	9.81%	0.855%
62	12.839	1808	1810	1816	rVB	34102	47014	7.06%	0.615%
63	12.980	1826	1834	1841	rVB	422377	630120	94.61%	8.247%
64	13.116	1854	1857	1863	rBV	37386	46771	7.02%	0.612%
65	13.445	1910	1913	1917	rVB	69384	85577	12.85%	1.120%
66	14.045	2010	2015	2028	rVB	219631	355825	53.42%	4.657%
67	15.527	2262	2267	2283	rVB	215006	372198	55.88%	4.871%
68	17.251	2555	2560	2567	rVB4	60979	132303	19.86%	1.732%

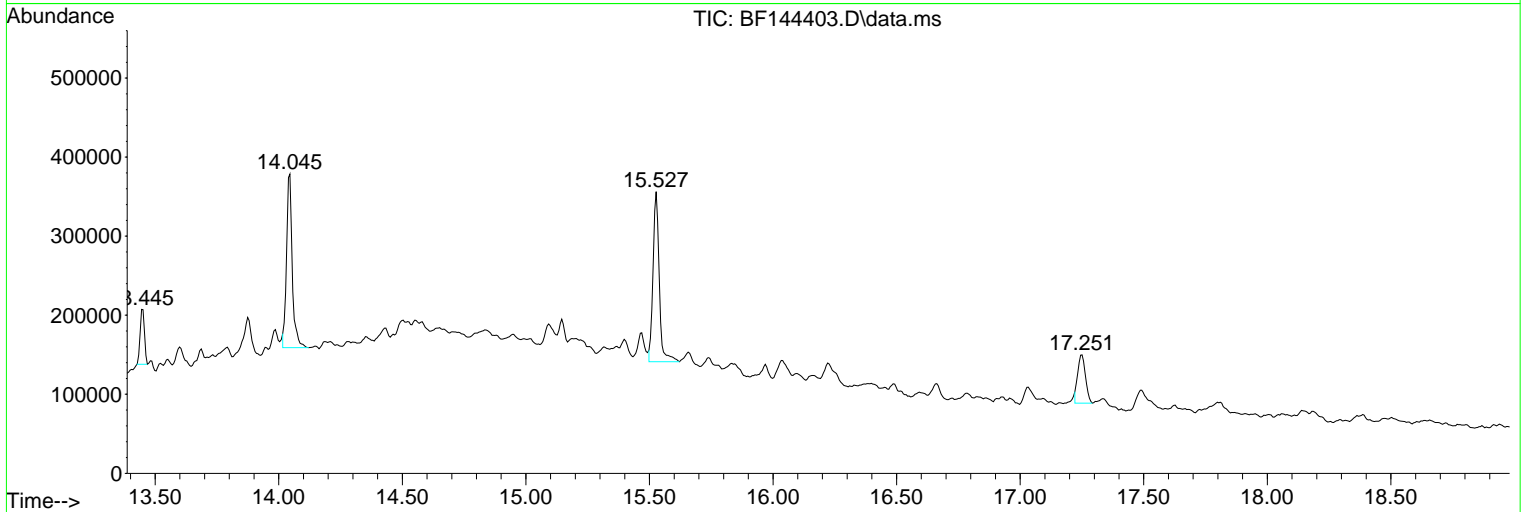
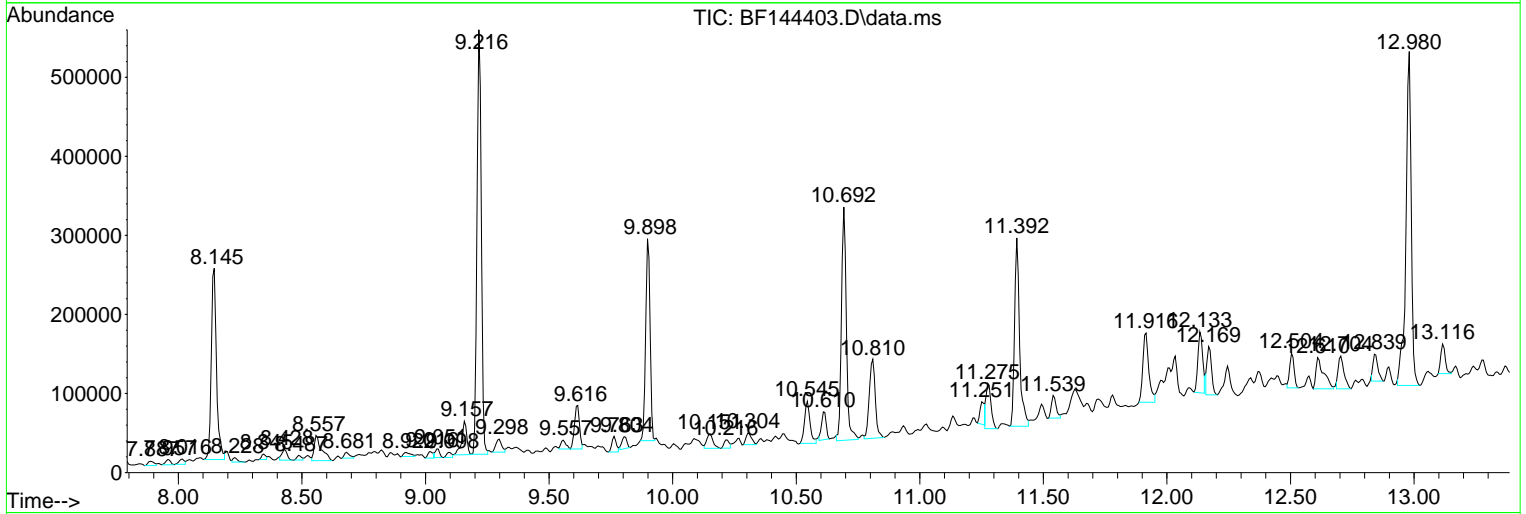
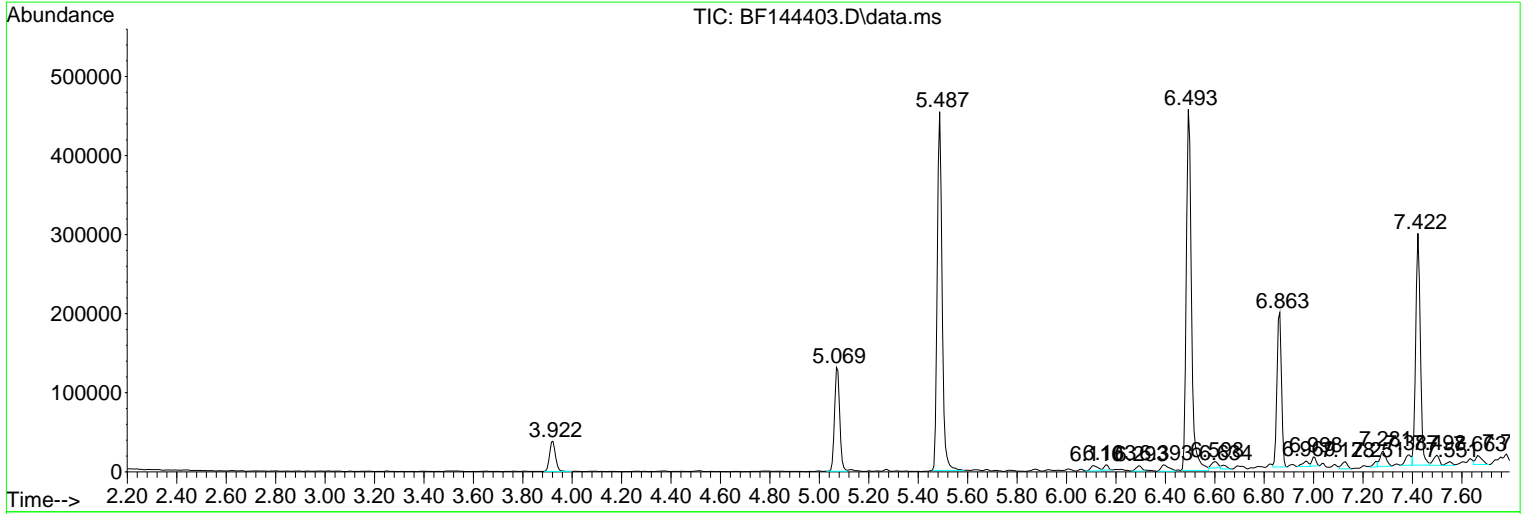
Sum of corrected areas: 7640813

Data Path : Z:\svoasrv\HPCHEM1\BNA_F\Data\BF120225\
 Data File : BF144403.D
 Acq On : 02 Dec 2025 15:20
 Operator : RC/JU
 Sample : Q3742-07
 Misc :
 ALS Vial : 7 Sample Multiplier: 1

Instrument :
 BNA_F
ClientSampleId :
 SB-1125-18

Quant Method : Z:\svoasrv\HPCHEM1\BNA_F\Methods\8270-BF110525.M
 Quant Title : ASP BNA STANDARDS FOR 5 POINT CALIBRATION

TIC Library : C:\Database\NIST20.L
 TIC Integration Parameters: LSCINT.P



Data Path : Z:\svoasrv\HPCHEM1\BNA_F\Data\BF120225\
 Data File : BF144403.D
 Acq On : 02 Dec 2025 15:20
 Operator : RC/JU
 Sample : Q3742-07
 Misc :
 ALS Vial : 7 Sample Multiplier: 1

Instrument :
 BNA_F
 ClientSampleId :
 SB-1125-18

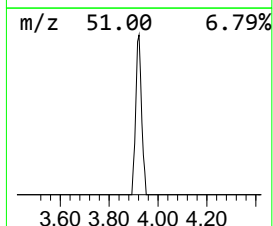
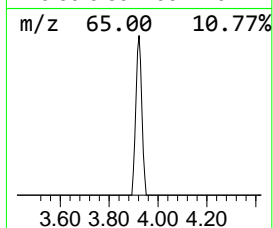
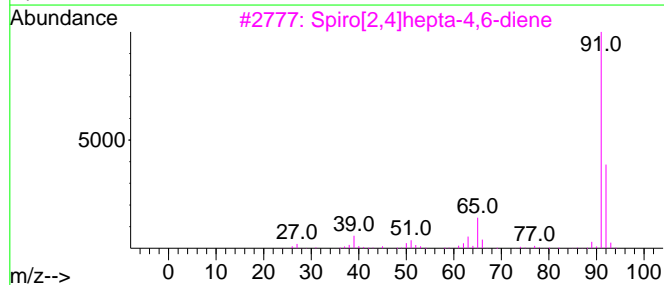
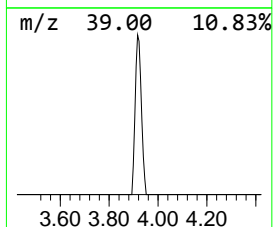
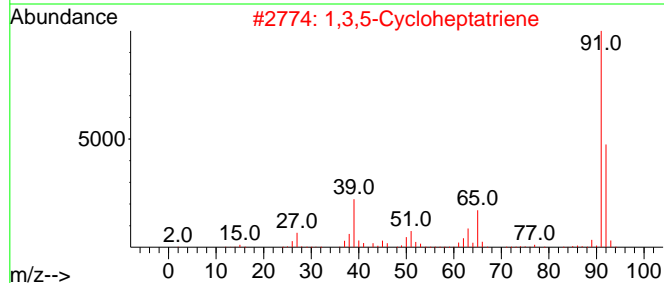
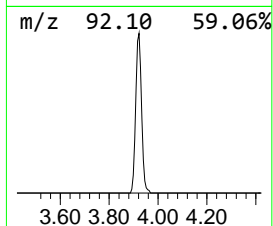
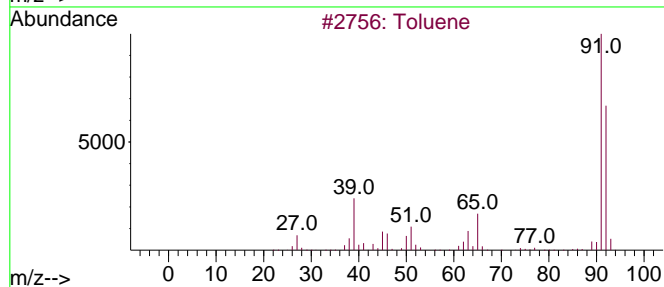
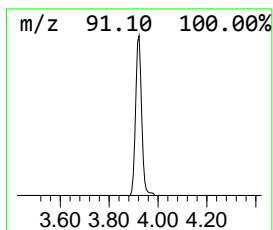
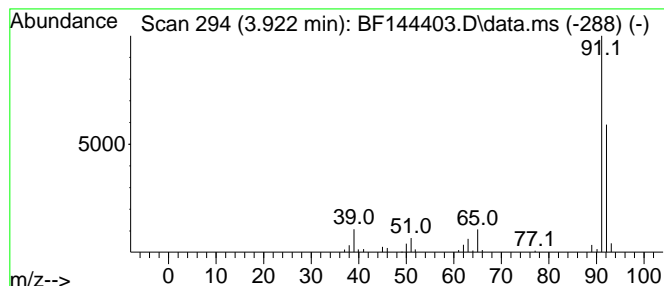
Quant Method : Z:\svoasrv\HPCHEM1\BNA_F\Methods\8270-BF110525.M
 Quant Title : ASP BNA STANDARDS FOR 5 POINT CALIBRATION

TIC Library : C:\Database\NIST20.L
 TIC Integration Parameters: LSCINT.P

 Peak Number 1 1,3,5-Cycloheptatriene Concentration Rank 7

R.T.	EstConc	Area	Relative to ISTD	R.T.
3.922	5.08 ng	63527	1,4-Dichlorobenzene-d4	6.863

Hit#	of 5	Tentative ID	MW	MolForm	CAS#	Qual
1		Toluene	92	C7H8	000108-88-3	91
2		1,3,5-Cycloheptatriene	92	C7H8	000544-25-2	80
3		Spiro[2,4]hepta-4,6-diene	92	C7H8	000765-46-8	72
4		2,5-Norbornadiene	92	C7H8	000121-46-0	72
5		Cyclobutene, 2-propenylidene-	92	C7H8	052097-85-5	64



Data Path : Z:\svoasrv\HPCHEM1\BNA_F\Data\BF120225\
 Data File : BF144403.D
 Acq On : 02 Dec 2025 15:20
 Operator : RC/JU
 Sample : Q3742-07
 Misc :
 ALS Vial : 7 Sample Multiplier: 1

Instrument :
 BNA_F
 ClientSampleId :
 SB-1125-18

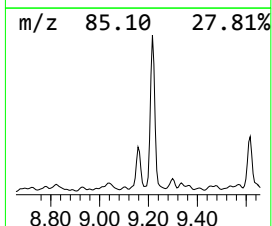
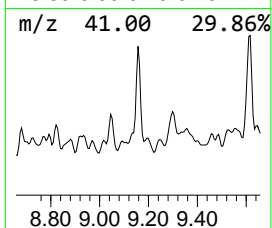
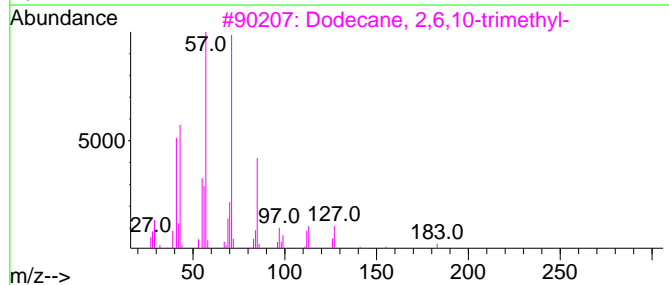
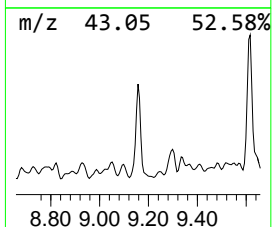
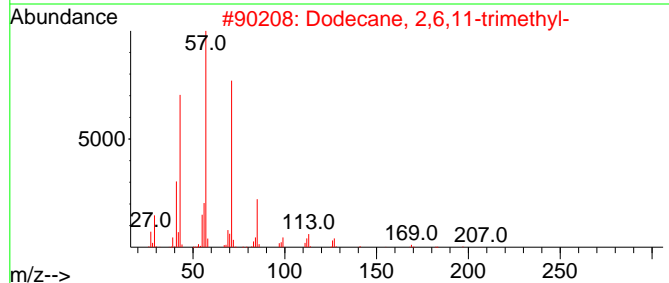
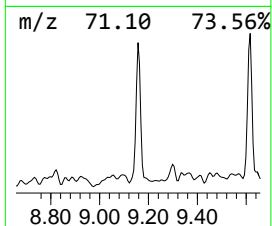
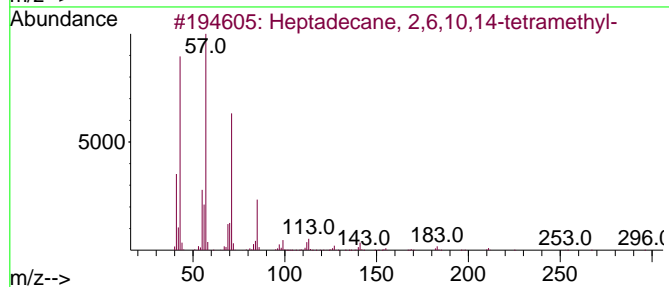
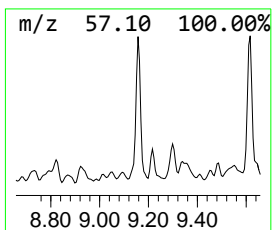
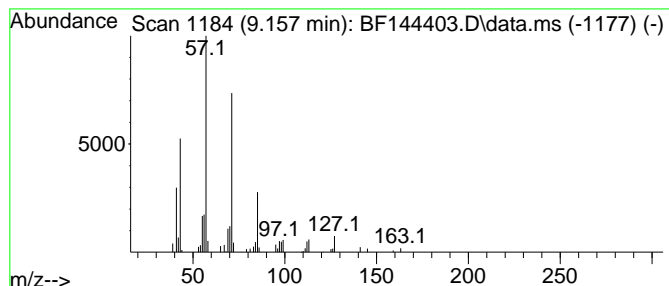
Quant Method : Z:\svoasrv\HPCHEM1\BNA_F\Methods\8270-BF110525.M
 Quant Title : ASP BNA STANDARDS FOR 5 POINT CALIBRATION

TIC Library : C:\Database\NIST20.L
 TIC Integration Parameters: LSCINT.P

 Peak Number 4 Heptadecane, 2,6,10,14-tetr... Concentration Rank 13

R.T.	EstConc	Area	Relative to ISTD	R.T.
9.157	3.82 ng	61247	Acenaphthene-d10	9.898

Hit#	of 5	Tentative ID	MW	MolForm	CAS#	Qual
1		Heptadecane, 2,6,10,14-tetramethyl-	296	C21H44	018344-37-1	86
2		Dodecane, 2,6,11-trimethyl-	212	C15H32	031295-56-4	86
3		Dodecane, 2,6,10-trimethyl-	212	C15H32	003891-98-3	83
4		Dodecane, 2,7,10-trimethyl-	212	C15H32	074645-98-0	80
5		Nonane, 2-methyl-5-propyl-	184	C13H28	031081-17-1	72



Data Path : Z:\svoasrv\HPCHEM1\BNA_F\Data\BF120225\
 Data File : BF144403.D
 Acq On : 02 Dec 2025 15:20
 Operator : RC/JU
 Sample : Q3742-07
 Misc :
 ALS Vial : 7 Sample Multiplier: 1

Instrument :
 BNA_F
 ClientSampleId :
 SB-1125-18

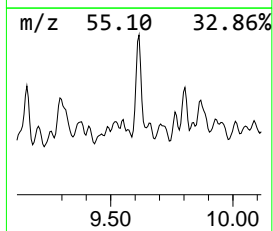
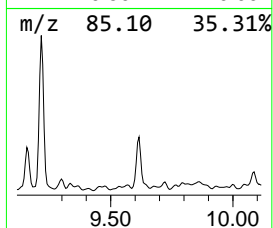
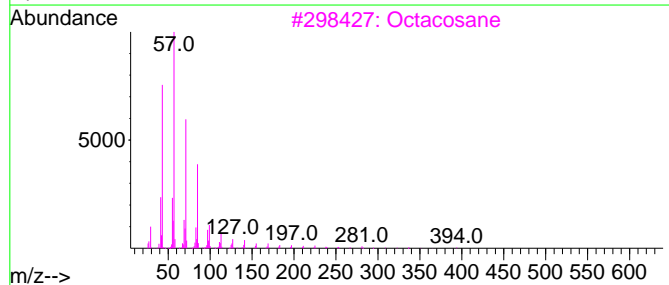
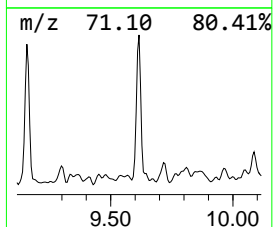
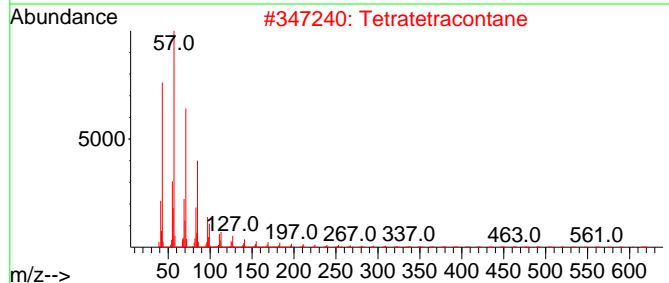
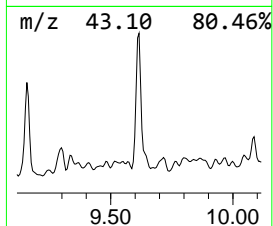
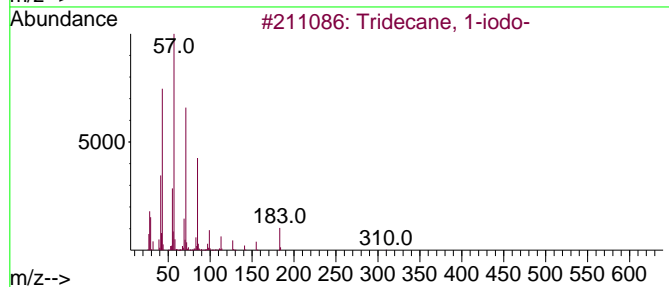
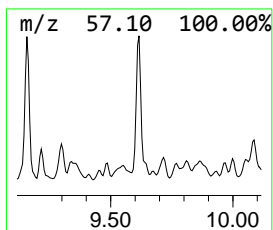
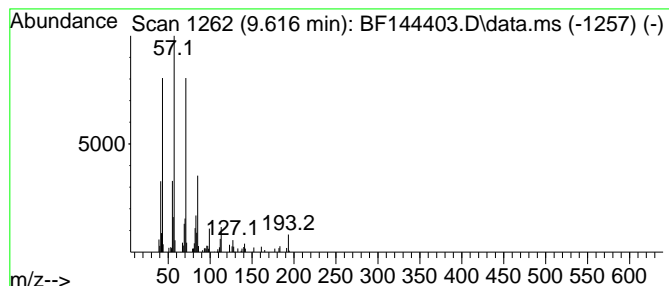
Quant Method : Z:\svoasrv\HPCHEM1\BNA_F\Methods\8270-BF110525.M
 Quant Title : ASP BNA STANDARDS FOR 5 POINT CALIBRATION

TIC Library : C:\Database\NIST20.L
 TIC Integration Parameters: LSCINT.P

 Peak Number 5 Tridecane, 1-iodo- Concentration Rank 8

R.T.	EstConc	Area	Relative to ISTD	R.T.
9.616	4.92 ng	78838	Acenaphthene-d10	9.898

Hit# of 5	Tentative ID	MW	MolForm	CAS#	Qual
1	Tridecane, 1-iodo-	310	C13H27I	035599-77-0	86
2	Tetratetracontane	619	C44H90	007098-22-8	86
3	Octacosane	394	C28H58	000630-02-4	86
4	Tetracosane	338	C24H50	000646-31-1	86
5	Dodecane, 2,7,10-trimethyl-	212	C15H32	074645-98-0	86



Data Path : Z:\svoasrv\HPCHEM1\BNA_F\Data\BF120225\
 Data File : BF144403.D
 Acq On : 02 Dec 2025 15:20
 Operator : RC/JU
 Sample : Q3742-07
 Misc :
 ALS Vial : 7 Sample Multiplier: 1

Instrument :
 BNA_F
 ClientSampleId :
 SB-1125-18

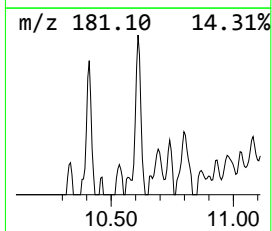
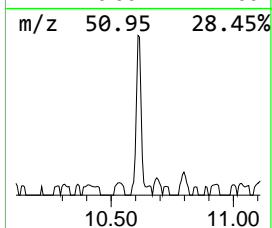
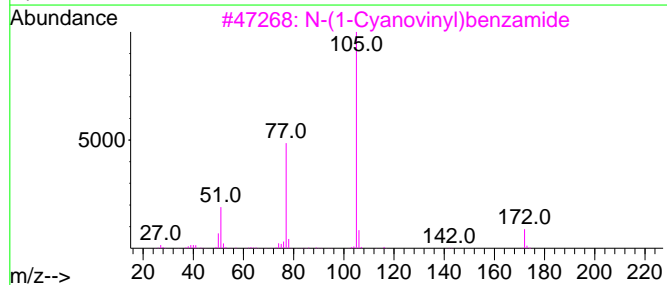
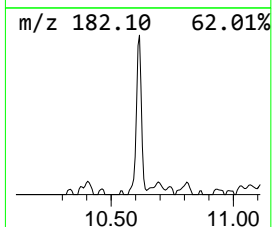
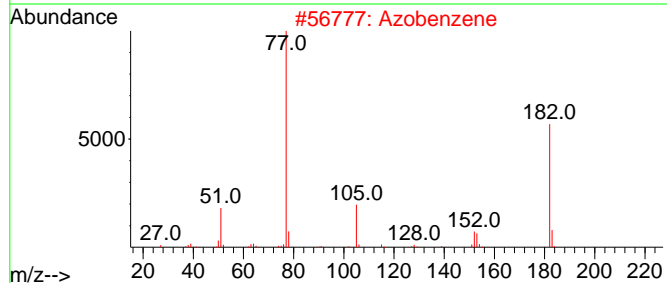
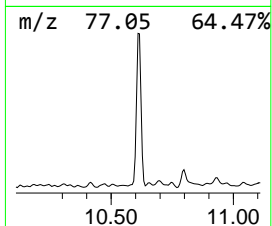
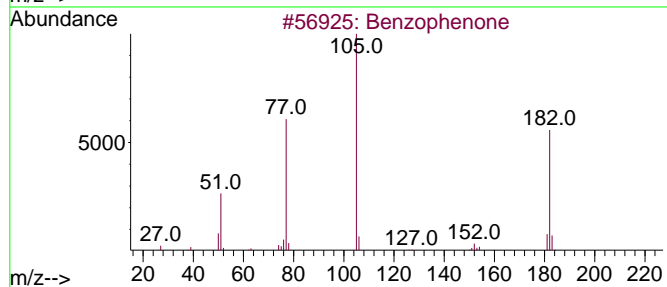
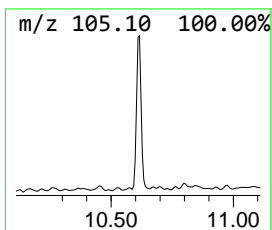
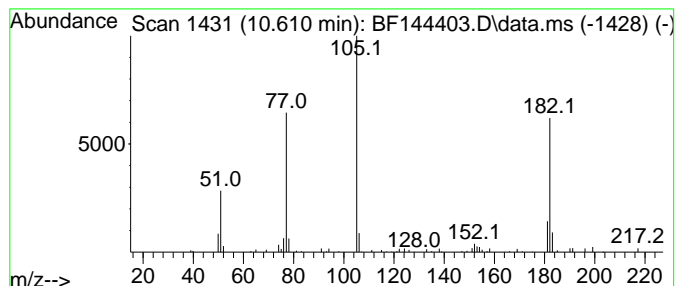
Quant Method : Z:\svoasrv\HPCHEM1\BNA_F\Methods\8270-BF110525.M
 Quant Title : ASP BNA STANDARDS FOR 5 POINT CALIBRATION

TIC Library : C:\Database\NIST20.L
 TIC Integration Parameters: LSCINT.P

 Peak Number 7 Benzophenone Concentration Rank 16

R.T.	EstConc	Area	Relative to ISTD	R.T.
10.610	2.86 ng	45748	Acenaphthene-d10	9.898

Hit#	of	5	Tentative ID	MW	MolForm	CAS#	Qual
1			Benzophenone	182	C13H10O	000119-61-9	97
2			Azobenzene	182	C12H10N2	000103-33-3	64
3			N-(1-Cyanovinyl)benzamide	172	C10H8N2O	1000186-19-1	43
4			1-Propanone, 3-chloro-1-phenyl-	168	C9H9ClO	000936-59-4	43
5			1,2-Propanedione, 1-phenyl-	148	C9H8O2	000579-07-7	43



Data Path : Z:\svoasrv\HPCHEM1\BNA_F\Data\BF120225\
 Data File : BF144403.D
 Acq On : 02 Dec 2025 15:20
 Operator : RC/JU
 Sample : Q3742-07
 Misc :
 ALS Vial : 7 Sample Multiplier: 1

Instrument :
 BNA_F
 ClientSampleId :
 SB-1125-18

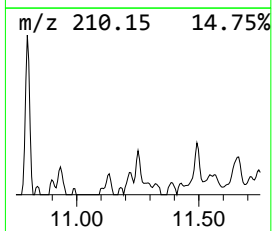
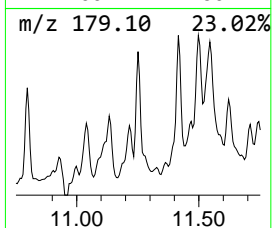
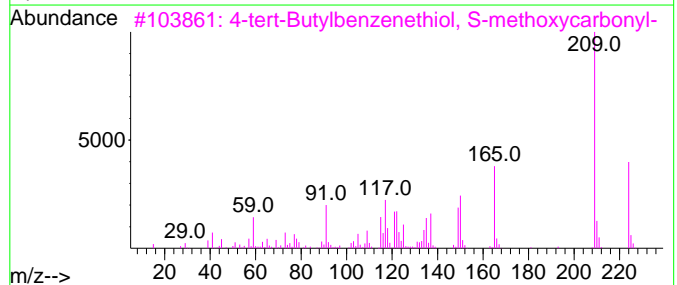
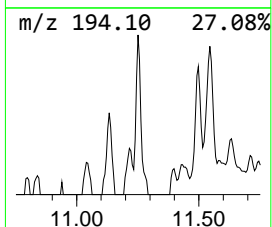
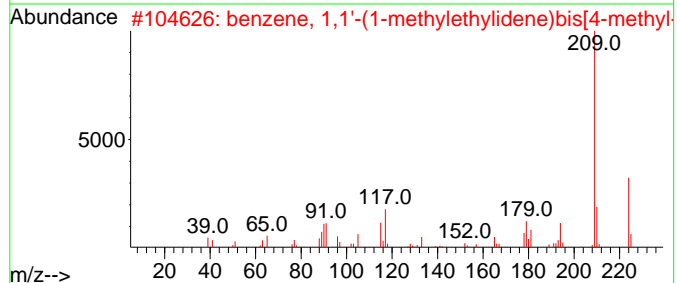
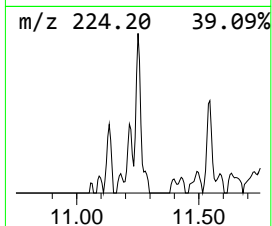
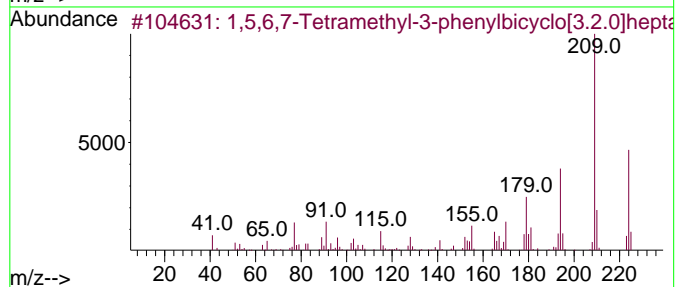
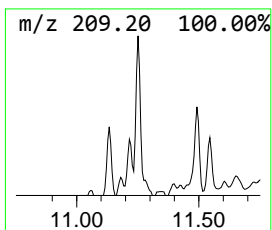
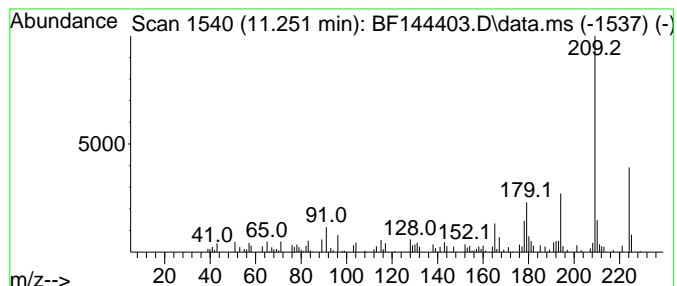
Quant Method : Z:\svoasrv\HPCHEM1\BNA_F\Methods\8270-BF110525.M
 Quant Title : ASP BNA STANDARDS FOR 5 POINT CALIBRATION

TIC Library : C:\Database\NIST20.L
 TIC Integration Parameters: LSCINT.P

 Peak Number 9 1,5,6,7-Tetramethyl-3-pheny... Concentration Rank 19

R.T.	EstConc	Area	Relative to ISTD	R.T.
11.251	2.24 ng	37940	Phenanthrene-d10	11.392

Hit#	of	5	Tentative ID	MW	MolForm	CAS#	Qual
1			1,5,6,7-Tetramethyl-3-phenylbicy...	224	C17H20	126584-00-7	90
2			benzene, 1,1'-(1-methylethyliden...	224	C17H20	1000400-89-0	72
3			4-tert-Butylbenzenethiol, S-meth...	224	C12H16O2S	1890084-37-3	53
4			benzenamine, N,N-diethyl-3-metho...	224	C11H16N2O3	1000400-88-1	52
5			Dimethylbis(thiophen-2-yl)silane	224	C10H12S2Si	1000487-00-9	52



Data Path : Z:\svoasrv\HPCHEM1\BNA_F\Data\BF120225\
 Data File : BF144403.D
 Acq On : 02 Dec 2025 15:20
 Operator : RC/JU
 Sample : Q3742-07
 Misc :
 ALS Vial : 7 Sample Multiplier: 1

Instrument :
 BNA_F
 ClientSampleId :
 SB-1125-18

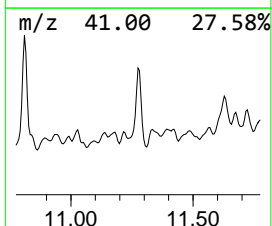
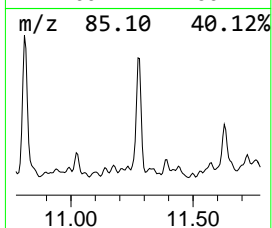
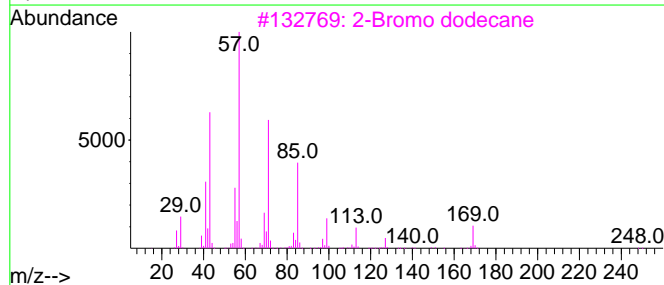
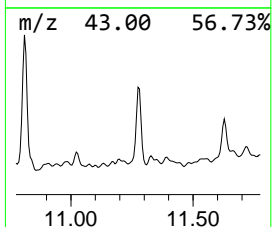
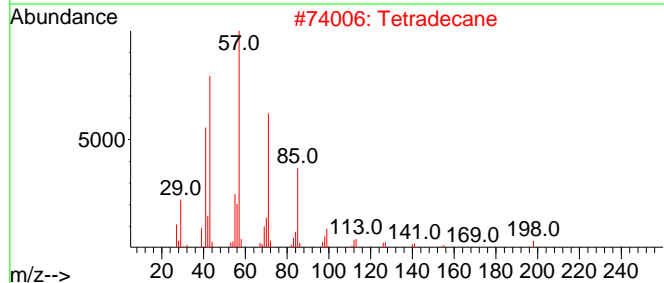
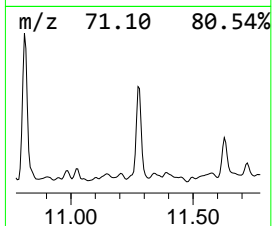
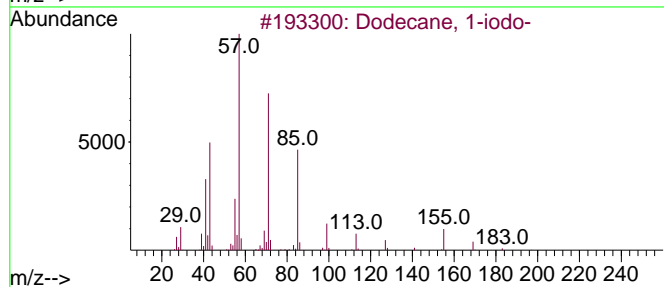
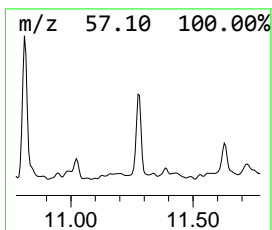
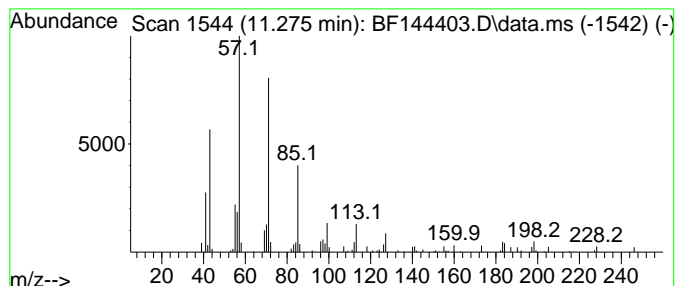
Quant Method : Z:\svoasrv\HPCHEM1\BNA_F\Methods\8270-BF110525.M
 Quant Title : ASP BNA STANDARDS FOR 5 POINT CALIBRATION

TIC Library : C:\Database\NIST20.L
 TIC Integration Parameters: LSCINT.P

 Peak Number 10 Dodecane, 1-iodo- Concentration Rank 10

R.T.	EstConc	Area	Relative to ISTD	R.T.
11.275	4.64 ng	78688	Phenanthrene-d10	11.392

Hit#	of 5	Tentative ID	MW	MolForm	CAS#	Qual
1		Dodecane, 1-iodo-	296	C12H25I	004292-19-7	86
2		Tetradecane	198	C14H30	000629-59-4	80
3		2-Bromo dodecane	248	C12H25Br	013187-99-0	78
4		Hexadecane, 1-iodo-	352	C16H33I	000544-77-4	78
5		Tetradecane, 1-iodo-	324	C14H29I	019218-94-1	72



Data Path : Z:\svoasrv\HPCHEM1\BNA_F\Data\BF120225\
 Data File : BF144403.D
 Acq On : 02 Dec 2025 15:20
 Operator : RC/JU
 Sample : Q3742-07
 Misc :
 ALS Vial : 7 Sample Multiplier: 1

Instrument :
 BNA_F
 ClientSampleId :
 SB-1125-18

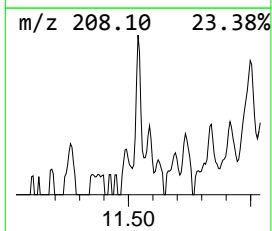
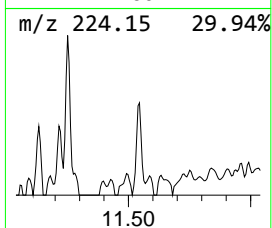
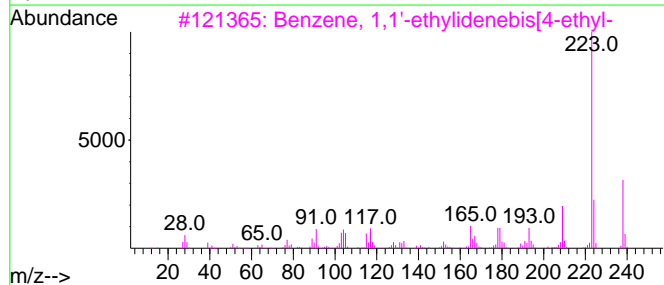
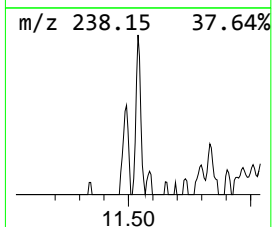
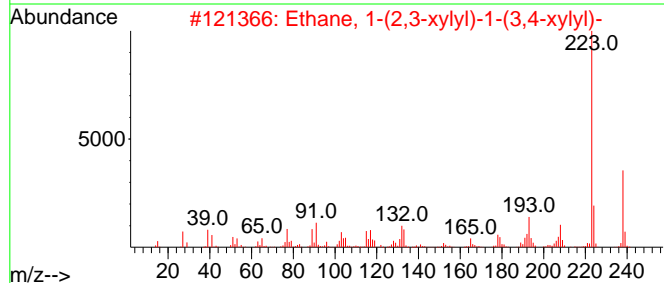
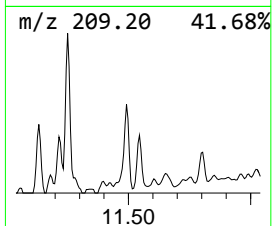
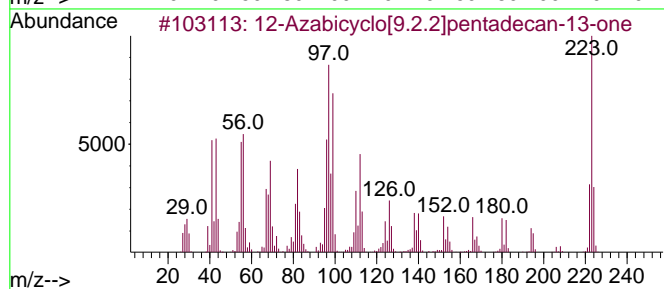
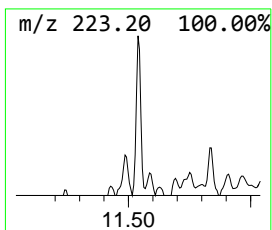
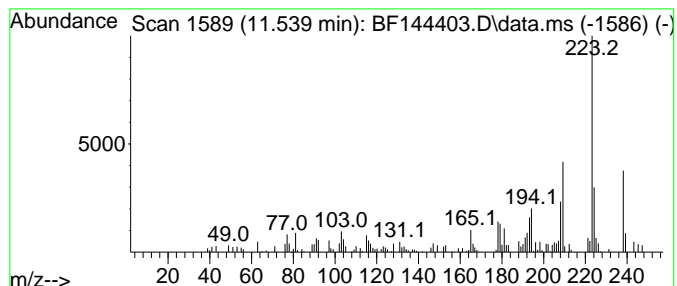
Quant Method : Z:\svoasrv\HPCHEM1\BNA_F\Methods\8270-BF110525.M
 Quant Title : ASP BNA STANDARDS FOR 5 POINT CALIBRATION

TIC Library : C:\Database\NIST20.L
 TIC Integration Parameters: LSCINT.P

 Peak Number 11 12-Azabicyclo[9.2.2]pentade... Concentration Rank 18

R.T.	EstConc	Area	Relative to ISTD	R.T.
11.539	2.33 ng	39516	Phenanthrene-d10	11.392

Hit#	of 5	Tentative ID	MW	MolForm	CAS#	Qual
1		12-Azabicyclo[9.2.2]pentadecan-1...	223	C14H25NO	1000191-26-7	89
2		Ethane, 1-(2,3-xylyl)-1-(3,4-xylyl...	238	C18H22	002816-98-0	58
3		Benzene, 1,1'-ethylidenebis[4-et...	238	C18H22	010224-91-6	53
4		Benzene, 1,1'-ethylidenebis[3,4-...	238	C18H22	001742-14-9	49
5		3,4'-Diisopropylbiphenyl	238	C18H22	061434-46-6	45



Data Path : Z:\svoasrv\HPCHEM1\BNA_F\Data\BF120225\
 Data File : BF144403.D
 Acq On : 02 Dec 2025 15:20
 Operator : RC/JU
 Sample : Q3742-07
 Misc :
 ALS Vial : 7 Sample Multiplier: 1

Instrument :
 BNA_F
 ClientSampleId :
 SB-1125-18

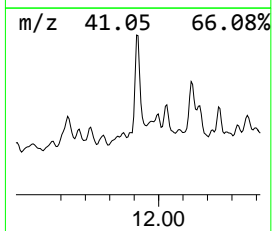
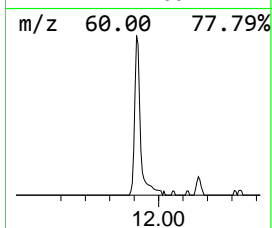
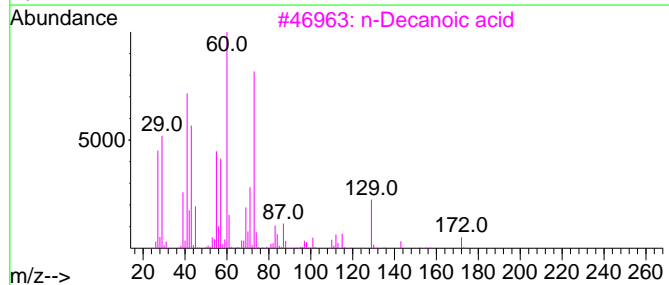
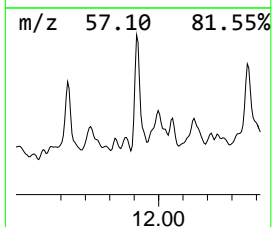
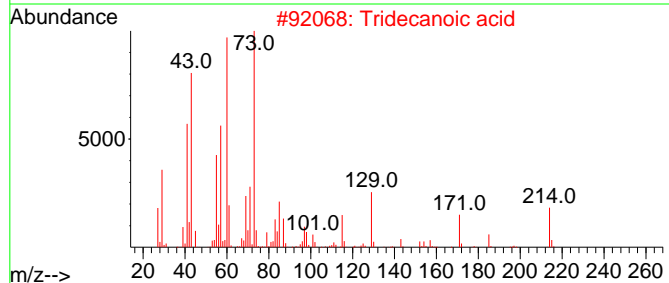
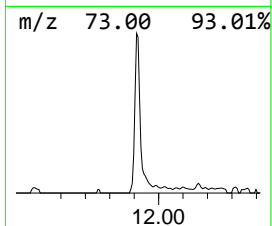
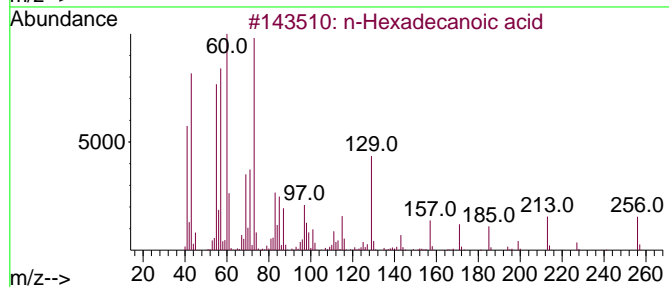
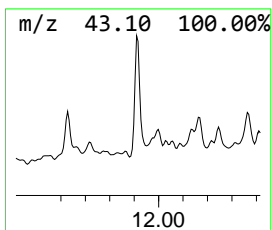
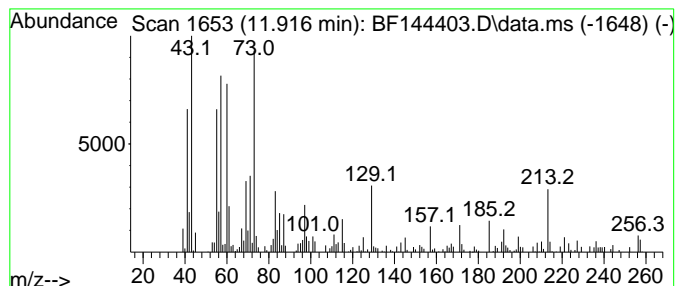
Quant Method : Z:\svoasrv\HPCHEM1\BNA_F\Methods\8270-BF110525.M
 Quant Title : ASP BNA STANDARDS FOR 5 POINT CALIBRATION

TIC Library : C:\Database\NIST20.L
 TIC Integration Parameters: LSCINT.P

 Peak Number 12 n-Hexadecanoic acid Concentration Rank 3

R.T.	EstConc	Area	Relative to ISTD	R.T.
11.916	8.69 ng	147394	Phenanthrene-d10	11.392

Hit#	of 5	Tentative ID	MW	MolForm	CAS#	Qual
1		n-Hexadecanoic acid	256	C16H32O2	000057-10-3	86
2		Tridecanoic acid	214	C13H26O2	000638-53-9	64
3		n-Decanoic acid	172	C10H20O2	000334-48-5	58
4		Tetradecanoic acid	228	C14H28O2	000544-63-8	53
5		Pentadecanoic acid	242	C15H30O2	001002-84-2	53



Data Path : Z:\svoasrv\HPCHEM1\BNA_F\Data\BF120225\
 Data File : BF144403.D
 Acq On : 02 Dec 2025 15:20
 Operator : RC/JU
 Sample : Q3742-07
 Misc :
 ALS Vial : 7 Sample Multiplier: 1

Instrument :
 BNA_F
 ClientSampleId :
 SB-1125-18

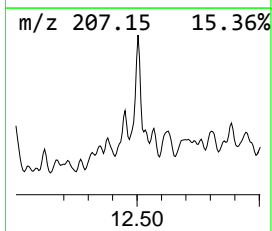
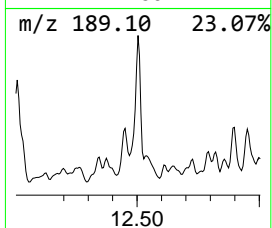
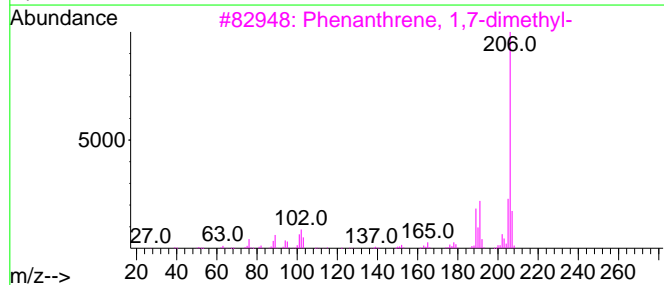
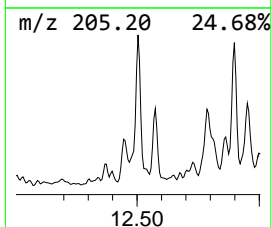
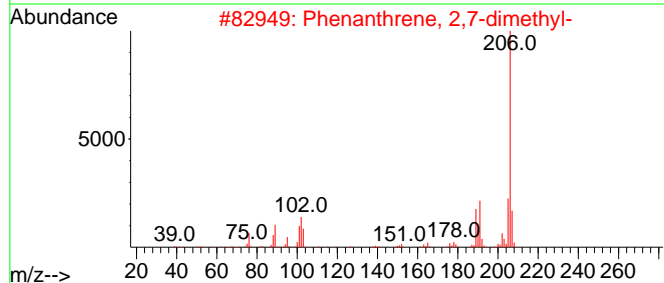
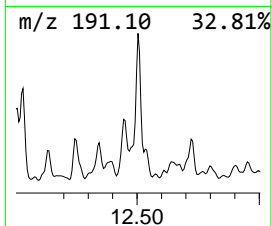
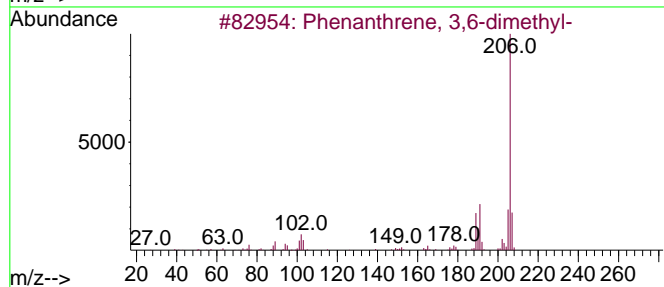
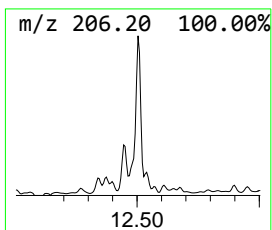
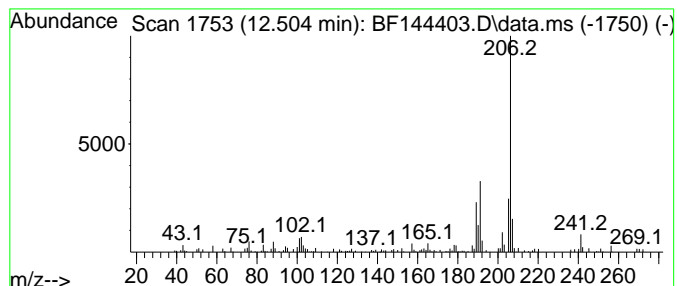
Quant Method : Z:\svoasrv\HPCHEM1\BNA_F\Methods\8270-BF110525.M
 Quant Title : ASP BNA STANDARDS FOR 5 POINT CALIBRATION

TIC Library : C:\Database\NIST20.L
 TIC Integration Parameters: LSCINT.P

 Peak Number 15 Phenanthrene, 3,6-dimethyl- Concentration Rank 15

R.T.	EstConc	Area	Relative to ISTD	R.T.
12.504	3.12 ng	52831	Phenanthrene-d10	11.392

Hit#	of 5	Tentative ID	MW	MolForm	CAS#	Qual
1		Phenanthrene, 3,6-dimethyl-	206	C16H14	001576-67-6	94
2		Phenanthrene, 2,7-dimethyl-	206	C16H14	001576-69-8	90
3		Phenanthrene, 1,7-dimethyl-	206	C16H14	000483-87-4	90
4		di-p-Tolylacetylene	206	C16H14	002789-88-0	86
5		3,4-Dimethylphenanthrene	206	C16H14	1000452-24-5	83



Data Path : Z:\svoasrv\HPCHEM1\BNA_F\Data\BF120225\
 Data File : BF144403.D
 Acq On : 02 Dec 2025 15:20
 Operator : RC/JU
 Sample : Q3742-07
 Misc :
 ALS Vial : 7 Sample Multiplier: 1

Instrument :
 BNA_F
 ClientSampleId :
 SB-1125-18

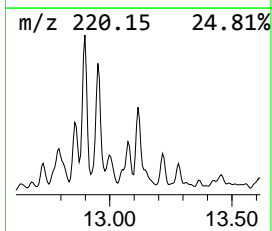
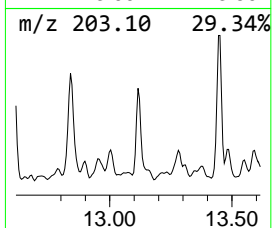
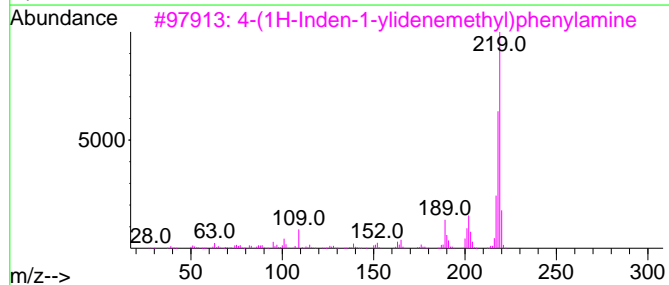
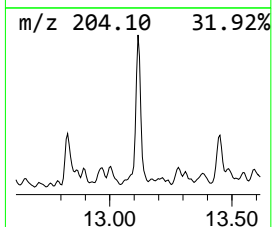
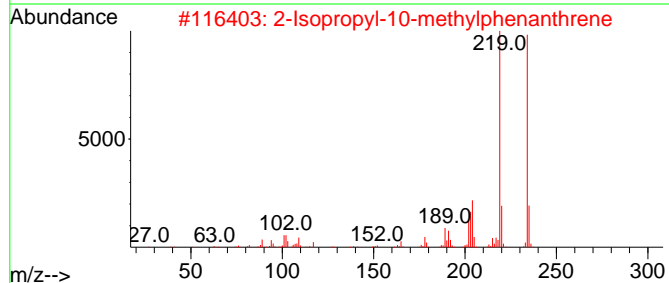
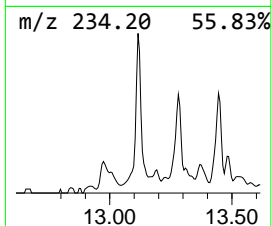
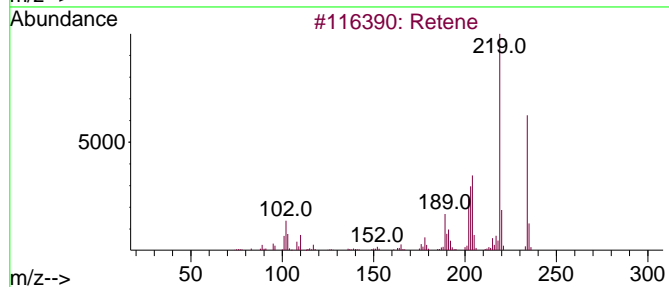
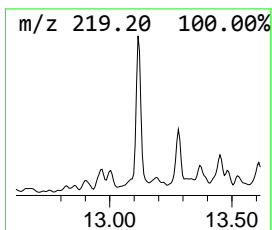
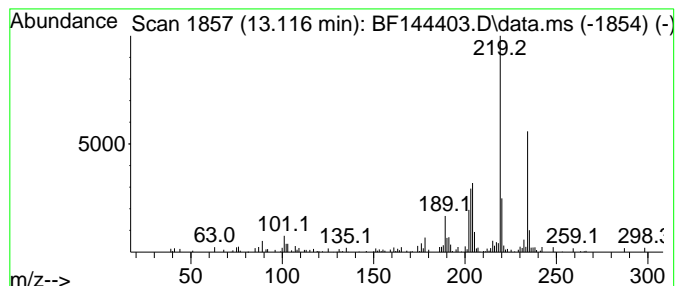
Quant Method : Z:\svoasrv\HPCHEM1\BNA_F\Methods\8270-BF110525.M
 Quant Title : ASP BNA STANDARDS FOR 5 POINT CALIBRATION

TIC Library : C:\Database\NIST20.L
 TIC Integration Parameters: LSCINT.P

 Peak Number 17 Retene Concentration Rank 17

R.T.	EstConc	Area	Relative to ISTD	R.T.
13.116	2.63 ng	46771	Chrysene-d12	14.045

Hit#	of 5	Tentative ID	MW	MolForm	CAS#	Qual
1		Retene	234	C18H18	000483-65-8	95
2		2-Isopropyl-10-methylphenanthrene	234	C18H18	066552-97-4	94
3		4-(1H-Inden-1-ylidenemethyl)phen...	219	C16H13N	000487-61-6	55
4		Quinoline, 2-(3-tolyl)-	219	C16H13N	024641-30-3	55
5		Phenol, 2,6-bis(1,1-dimethylethy...	234	C16H26O	004130-42-1	52



Data Path : Z:\svoasrv\HPCHEM1\BNA_F\Data\BF120225\
 Data File : BF144403.D
 Acq On : 02 Dec 2025 15:20
 Operator : RC/JU
 Sample : Q3742-07
 Misc :
 ALS Vial : 7 Sample Multiplier: 1

Instrument :
 BNA_F
 ClientSampleId :
 SB-1125-18

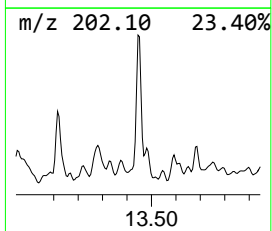
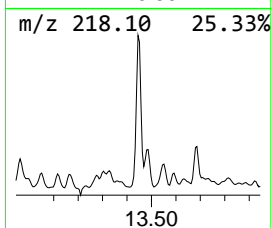
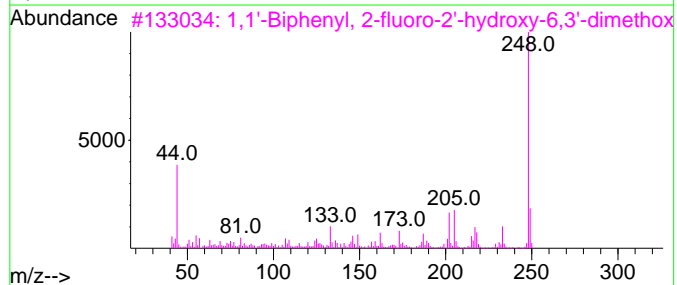
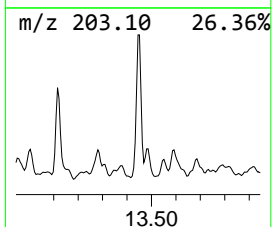
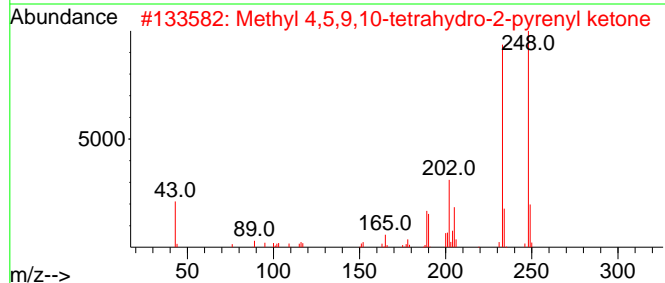
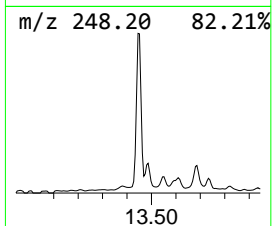
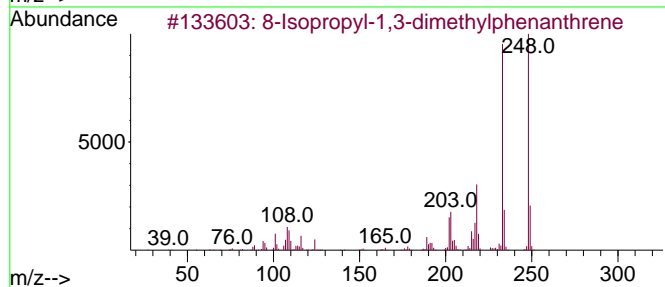
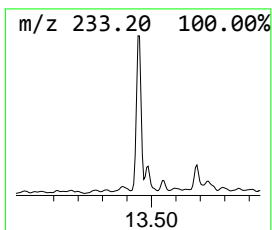
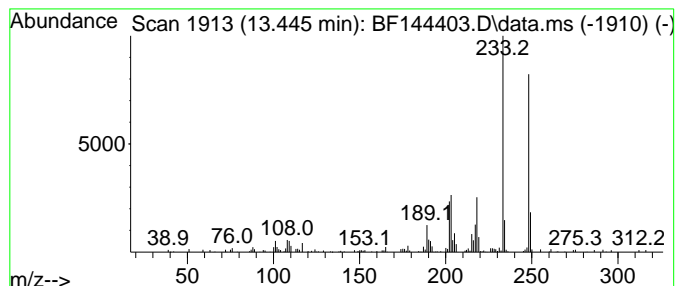
Quant Method : Z:\svoasrv\HPCHEM1\BNA_F\Methods\8270-BF110525.M
 Quant Title : ASP BNA STANDARDS FOR 5 POINT CALIBRATION

TIC Library : C:\Database\NIST20.L
 TIC Integration Parameters: LSCINT.P

 Peak Number 18 8-Isopropyl-1,3-dimethylphe... Concentration Rank 9

R.T.	EstConc	Area	Relative to ISTD	R.T.
13.445	4.81 ng	85577	Chrysene-d12	14.045

Hit#	of 5	Tentative ID	MW	MolForm	CAS#	Qual
1		8-Isopropyl-1,3-dimethylphenanth...	248	C19H20	135886-06-5	90
2		Methyl 4,5,9,10-tetrahydro-2-pyr...	248	C18H16O	1000432-00-9	52
3		1,1'-Biphenyl, 2-fluoro-2'-hydro...	248	C14H13F03	095881-16-6	43
4		benzonitrile, 4-[2-(4-methoxyphe...	233	C16H11NO	1000401-04-8	38
5		4-Methoxybenzylamine, N-trifluor...	233	C10H10F3NO2	122365-00-8	35



Data Path : Z:\svoasrv\HPCHEM1\BNA_F\Data\BF120225\
 Data File : BF144403.D
 Acq On : 02 Dec 2025 15:20
 Operator : RC/JU
 Sample : Q3742-07
 Misc :
 ALS Vial : 7 Sample Multiplier: 1

Instrument :
 BNA_F
 ClientSampleId :
 SB-1125-18

Quant Method : Z:\svoasrv\HPCHEM1\BNA_F\Methods\8270-BF110525.M
 Quant Title : ASP BNA STANDARDS FOR 5 POINT CALIBRATION

TIC Library : C:\Database\NIST0.L
 TIC Integration Parameters: LSCINT.P

TIC Top Hit name	RT	EstConc	Units	Response	--Internal Standard--			
					#	RT	Resp	Conc
1,3,5-Cyclohept...	3.922	5.1	ng	63527	1	6.863	250016	20.0
Heptadecane, 2,...	9.157	3.8	ng	61247	3	9.898	320454	20.0
Tridecane, 1-iodo-	9.616	4.9	ng	78838	3	9.898	320454	20.0
Benzophenone	10.610	2.9	ng	45748	3	9.898	320454	20.0
1,5,6,7-Tetrame...	11.251	2.2	ng	37940	4	11.392	339042	20.0
Dodecane, 1-iodo-	11.275	4.6	ng	78688	4	11.392	339042	20.0
12-Azabicyclo[9...	11.539	2.3	ng	39516	4	11.392	339042	20.0
n-Hexadecanoic ...	11.916	8.7	ng	147394	4	11.392	339042	20.0
Phenanthrene, 3...	12.504	3.1	ng	52831	4	11.392	339042	20.0
Retene	13.116	2.6	ng	46771	5	14.045	355825	20.0
8-Isopropyl-1,3...	13.445	4.8	ng	85577	5	14.045	355825	20.0