

Data Path : Z:\svoasrv\HPCHEM1\BNA\_P\Data\BP120225\  
 Data File : BP026219.D  
 Acq On : 02 Dec 2025 22:43  
 Operator : RC/JU  
 Sample : Q3742-03  
 Misc :  
 ALS Vial : 13 Sample Multiplier: 1

Instrument :  
 BNA\_P  
 ClientSampleId :  
 SB-1125-8

Integration Parameters: rteint.p  
 Integrator: RTE  
 Smoothing : ON  
 Sampling : 1  
 Start Thrs: 0.2  
 Stop Thrs : 0  
 Filtering: 5  
 Min Area: 3 % of largest Peak  
 Max Peaks: 100  
 Peak Location: TOP

If leading or trailing edge < 100 prefer < Baseline drop else tangent >  
 Peak separation: 5

Method : Z:\svoasrv\HPCHEM1\BNA\_P\Methods\8270E-BP111825.M  
 Title : ASP BNA STANDARDS FOR 5 POINT CALIBRATION

Signal : TIC: BP026219.D\data.ms

peak #	R.T. min	first scan	max scan	last scan	PK TY	peak height	corr. area	corr. % max.	% of total
1	3.455	81	88	99	rVB	301583	573954	5.78%	0.436%
2	3.925	162	168	179	rVB	289065	441055	4.44%	0.335%
3	4.831	313	322	326	rBV	754306	1108652	11.16%	0.843%
4	5.284	393	399	406	rBV	2821579	4304811	43.32%	3.273%
5	5.349	406	410	417	rVV	291510	519991	5.23%	0.395%
6	5.714	467	472	482	rVB3	384480	727182	7.32%	0.553%
7	6.190	544	553	561	rBV4	158489	337163	3.39%	0.256%
8	6.331	569	577	581	rBV3	96905	203094	2.04%	0.154%
9	6.666	627	634	642	rBV2	150392	309816	3.12%	0.236%
10	6.843	655	664	671	rVV	2723472	4614602	46.44%	3.509%
11	7.066	697	702	707	rBV	122151	174039	1.75%	0.132%
12	7.313	738	744	751	rBV2	283285	537169	5.41%	0.408%
13	7.660	796	803	809	rBV	971764	1542466	15.52%	1.173%
14	7.778	817	823	832	rVB2	127097	234308	2.36%	0.178%
15	8.302	907	912	924	rVB3	84306	196760	1.98%	0.150%
16	8.796	980	996	1003	rBV	1635723	3133293	31.53%	2.382%
17	8.890	1008	1012	1022	rVB	192209	309956	3.12%	0.236%
18	9.002	1022	1031	1038	rBV8	59942	167399	1.68%	0.127%
19	9.360	1084	1092	1103	rVB7	67056	193504	1.95%	0.147%
20	9.984	1192	1198	1210	rVB	712120	1271017	12.79%	0.966%
21	10.425	1265	1273	1278	rBV	1338037	2371647	23.87%	1.803%
22	10.478	1278	1282	1289	rVB	608472	1057366	10.64%	0.804%
23	11.472	1445	1451	1457	rBV	204730	352611	3.55%	0.268%
24	11.872	1512	1519	1525	rBV	226863	372639	3.75%	0.283%
25	12.090	1544	1556	1569	rBV	979557	1917962	19.30%	1.458%
26	12.307	1587	1593	1600	rVV	863622	1335059	13.44%	1.015%
27	12.837	1679	1683	1687	rVB	149596	201083	2.02%	0.153%
28	12.901	1687	1694	1700	rBV	4998882	7072077	71.17%	5.377%
29	13.125	1726	1732	1737	rBV2	360189	558497	5.62%	0.425%
30	13.319	1759	1765	1767	rBV2	92534	177801	1.79%	0.135%
31	13.448	1781	1787	1788	rBV	244245	358121	3.60%	0.272%
32	13.607	1808	1814	1818	rVV	640004	1055296	10.62%	0.802%
33	13.660	1818	1823	1830	rVB	508068	770316	7.75%	0.586%
34	13.784	1835	1844	1849	rBV	2325791	3527742	35.50%	2.682%
35	13.837	1849	1853	1858	rVV2	352903	526687	5.30%	0.400%
36	14.013	1874	1883	1891	rVB2	213964	383495	3.86%	0.292%

Data Path : Z:\svoasrv\HPCHEM1\BNA\_P\Data\BP120225\  
 Data File : BP026219.D  
 Acq On : 02 Dec 2025 22:43  
 Operator : RC/JU  
 Sample : Q3742-03  
 Misc :  
 ALS Vial : 13 Sample Multiplier: 1

Instrument :  
 BNA\_P  
 ClientSampleId :  
 SB-1125-8

Integration Parameters: rteint.p

Integrator: RTE  
 Smoothing : ON Filtering: 5  
 Sampling : 1 Min Area: 3 % of largest Peak  
 Start Thrs: 0.2 Max Peaks: 100  
 Stop Thrs : 0 Peak Location: TOP

If leading or trailing edge < 100 prefer < Baseline drop else tangent >  
 Peak separation: 5

Method : Z:\svoasrv\HPCHEM1\BNA\_P\Methods\8270E-BP111825.M  
 Title : ASP BNA STANDARDS FOR 5 POINT CALIBRATION

37	14.213	1912	1917	1921	rVB	279248	351520	3.54%	0.267%
38	14.290	1921	1930	1936	rBV	2119398	3482073	35.04%	2.648%
39	14.513	1962	1968	1972	rBV2	92012	219339	2.21%	0.167%
40	14.695	1994	1999	2007	rVV	440591	770860	7.76%	0.586%
41	14.778	2007	2013	2017	rVB	222655	356476	3.59%	0.271%
42	14.837	2019	2023	2031	rBV4	144504	230199	2.32%	0.175%
43	14.919	2032	2037	2043	rVV2	199682	412554	4.15%	0.314%
44	14.978	2043	2047	2051	rVB	223679	297338	2.99%	0.226%
45	15.101	2061	2068	2070	rBV2	316748	553824	5.57%	0.421%
46	15.178	2077	2081	2086	rBV	278438	352424	3.55%	0.268%
47	15.266	2091	2096	2104	rVB2	294684	508160	5.11%	0.386%
48	15.348	2105	2110	2115	rBV2	418799	600440	6.04%	0.457%
49	15.407	2115	2120	2125	rBV3	94937	186448	1.88%	0.142%
50	15.595	2145	2152	2155	rBV3	240862	541339	5.45%	0.412%
51	15.672	2157	2165	2173	rVV3	789132	1998743	20.12%	1.520%
52	15.748	2174	2178	2182	rVV3	243482	372830	3.75%	0.283%
53	15.807	2182	2188	2197	rVB	4280373	6135308	61.75%	4.665%
54	15.895	2198	2203	2207	rVV4	162336	267234	2.69%	0.203%
55	16.066	2225	2232	2234	rBV2	365859	633064	6.37%	0.481%
56	16.095	2234	2237	2242	rVB	725446	902759	9.09%	0.686%
57	16.625	2319	2327	2332	rBV4	263789	662450	6.67%	0.504%
58	16.742	2343	2347	2354	rVB3	186391	358994	3.61%	0.273%
59	16.825	2355	2361	2366	rVV2	204689	498208	5.01%	0.379%
60	16.878	2366	2370	2374	rVV2	339805	527129	5.31%	0.401%
61	16.936	2377	2380	2387	rVB2	195790	349596	3.52%	0.266%
62	17.095	2398	2407	2411	rBV	2186169	3624443	36.48%	2.756%
63	17.136	2411	2414	2419	rVB	1210345	1691346	17.02%	1.286%
64	17.231	2426	2430	2437	rVB	163474	277079	2.79%	0.211%
65	17.425	2459	2463	2470	rVB2	207799	335767	3.38%	0.255%
66	17.507	2470	2477	2483	rBV3	193151	444770	4.48%	0.338%
67	17.648	2497	2501	2507	rBV2	298810	424037	4.27%	0.322%
68	17.931	2544	2549	2554	rBV4	136414	261886	2.64%	0.199%
69	17.995	2555	2560	2565	rVV2	541453	1130671	11.38%	0.860%
70	18.054	2565	2570	2577	rVV	2621184	3843901	38.69%	2.923%
71	18.119	2577	2581	2588	rVV	1092637	1670249	16.81%	1.270%
72	18.201	2589	2595	2599	rVV3	458913	857216	8.63%	0.652%
73	18.242	2599	2602	2611	rVB	362101	570483	5.74%	0.434%
74	18.366	2619	2623	2628	rBV	356565	458624	4.62%	0.349%
75	18.525	2647	2650	2654	rBV	164578	227034	2.28%	0.173%
76	18.966	2720	2725	2730	rBV	368502	578445	5.82%	0.440%

Data Path : Z:\svoasrv\HPCHEM1\BNA\_P\Data\BP120225\  
 Data File : BP026219.D  
 Acq On : 02 Dec 2025 22:43  
 Operator : RC/JU  
 Sample : Q3742-03  
 Misc :  
 ALS Vial : 13 Sample Multiplier: 1

Instrument :  
 BNA\_P  
 ClientSampleId :  
 SB-1125-8

Integration Parameters: rteint.p  
 Integrator: RTE  
 Smoothing : ON Filtering: 5  
 Sampling : 1 Min Area: 3 % of largest Peak  
 Start Thrs: 0.2 Max Peaks: 100  
 Stop Thrs : 0 Peak Location: TOP

If leading or trailing edge < 100 prefer < Baseline drop else tangent >  
 Peak separation: 5

Method : Z:\svoasrv\HPCHEM1\BNA\_P\Methods\8270E-BP111825.M  
 Title : ASP BNA STANDARDS FOR 5 POINT CALIBRATION

77	19.030	2732	2736	2739	rVV2	423363	593220	5.97%	0.451%
78	19.060	2739	2741	2744	rVB	210607	192754	1.94%	0.147%
79	19.107	2745	2749	2754	rBV	155736	259300	2.61%	0.197%
80	19.236	2766	2771	2774	rBV	1681248	2443525	24.59%	1.858%
81	19.395	2793	2798	2801	rBV2	498987	693692	6.98%	0.527%
82	19.613	2827	2835	2844	rVB2	1278154	2616216	26.33%	1.989%
83	19.830	2868	2872	2884	rVB	6771484	9936276	100.00%	7.555%
84	20.195	2930	2934	2939	rBV2	344440	505139	5.08%	0.384%
85	20.236	2939	2941	2945	rVV	167979	207890	2.09%	0.158%
86	20.583	2997	3000	3006	rBV5	172816	281749	2.84%	0.214%
87	20.713	3019	3022	3026	rBV	417667	468540	4.72%	0.356%
88	20.860	3043	3047	3051	rBV	769029	1048535	10.55%	0.797%
89	21.230	3105	3110	3123	rVB5	1201211	3069000	30.89%	2.334%
90	21.477	3150	3152	3155	rBV	197700	223208	2.25%	0.170%
91	21.530	3155	3161	3167	rVV3	2217527	4722180	47.52%	3.591%
92	21.583	3167	3170	3174	rVB	491710	686125	6.91%	0.522%
93	22.477	3315	3322	3334	rVB2	1144533	2636563	26.53%	2.005%
94	23.807	3542	3548	3555	rBV	531401	1456735	14.66%	1.108%
95	24.065	3586	3592	3596	rBV	637650	1329266	13.38%	1.011%
96	24.677	3694	3696	3708	rVB	529729	1108183	11.15%	0.843%
97	24.836	3717	3723	3735	rVB	1311192	3518838	35.41%	2.676%
98	26.377	3977	3985	4001	rVB	1102998	3533875	35.57%	2.687%
99	26.559	4006	4016	4034	rVB	2516793	8406228	84.60%	6.392%
100	29.242	4466	4472	4473	rBV4	324733	673729	6.78%	0.512%

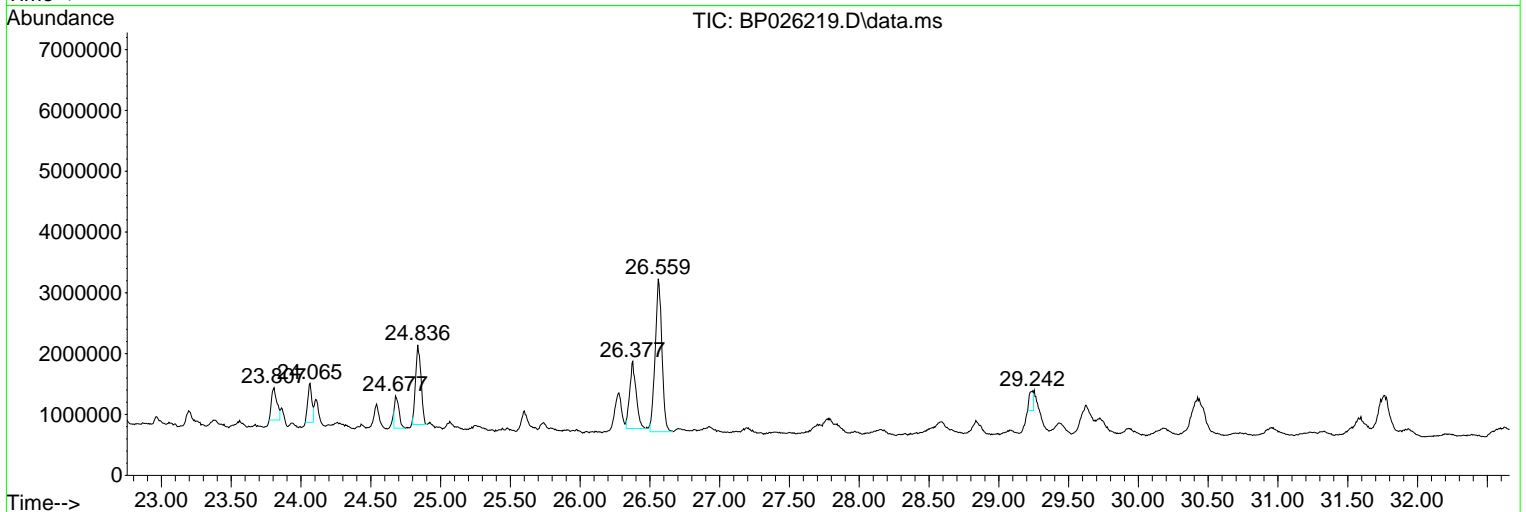
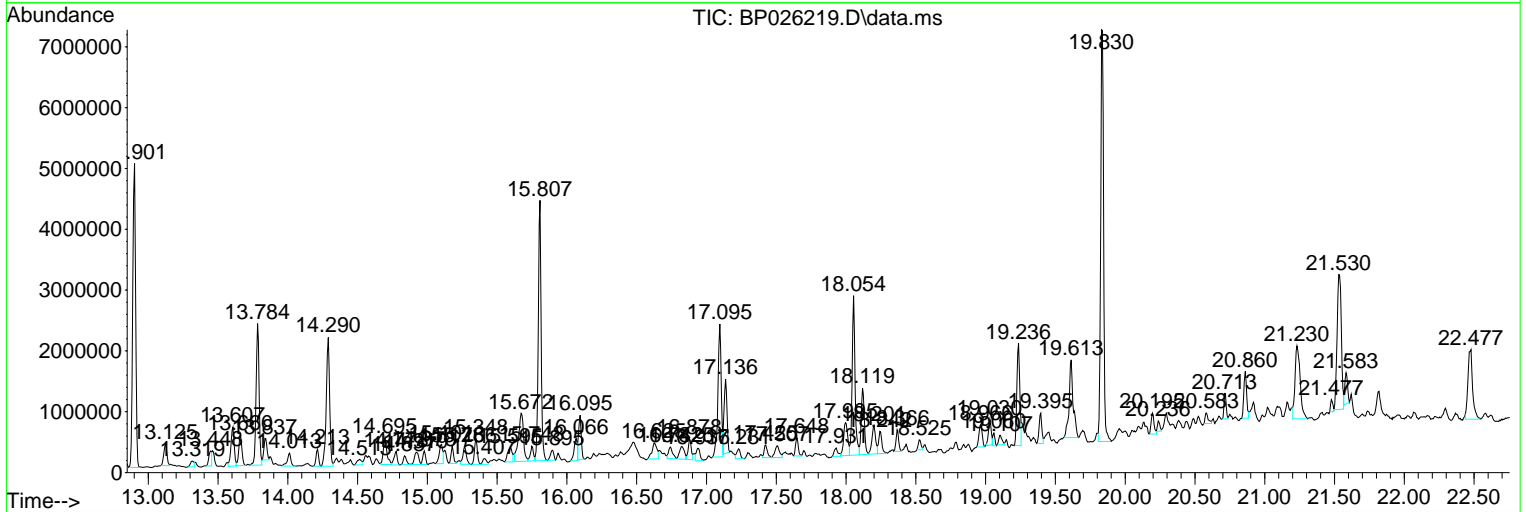
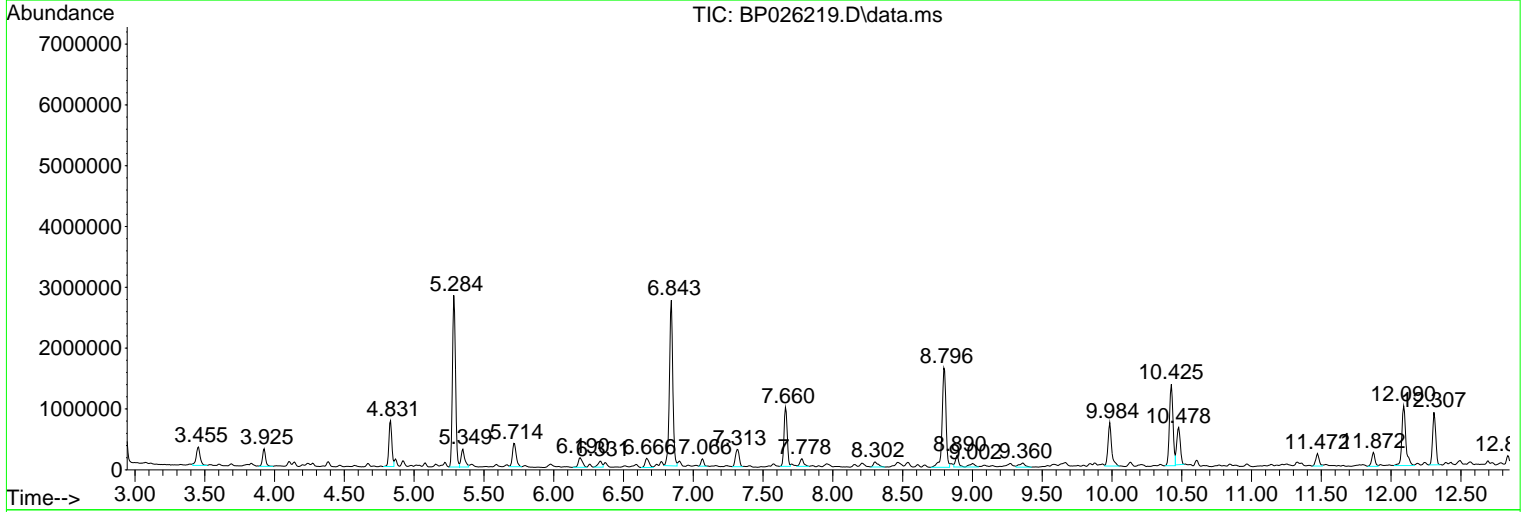
Sum of corrected areas: 131514656

Data Path : Z:\svoasrv\HPCHEM1\BNA\_P\Data\BP120225\  
 Data File : BP026219.D  
 Acq On : 02 Dec 2025 22:43  
 Operator : RC/JU  
 Sample : Q3742-03  
 Misc :  
 ALS Vial : 13 Sample Multiplier: 1

Instrument :  
 BNA\_P  
 ClientSampleId :  
 SB-1125-8

Quant Method : Z:\svoasrv\HPCHEM1\BNA\_P\Methods\8270E-BP111825.M  
 Quant Title : ASP BNA STANDARDS FOR 5 POINT CALIBRATION

TIC Library : C:\Database\NIST20.L  
 TIC Integration Parameters: LSCINT.P



Data Path : Z:\svoasrv\HPCHEM1\BNA\_P\Data\BP120225\  
 Data File : BP026219.D  
 Acq On : 02 Dec 2025 22:43  
 Operator : RC/JU  
 Sample : Q3742-03  
 Misc :  
 ALS Vial : 13 Sample Multiplier: 1

Instrument :  
 BNA\_P  
 ClientSampleId :  
 SB-1125-8

Quant Method : Z:\svoasrv\HPCHEM1\BNA\_P\Methods\8270E-BP111825.M  
 Quant Title : ASP BNA STANDARDS FOR 5 POINT CALIBRATION

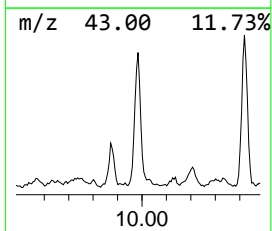
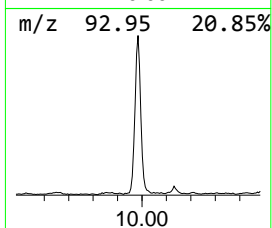
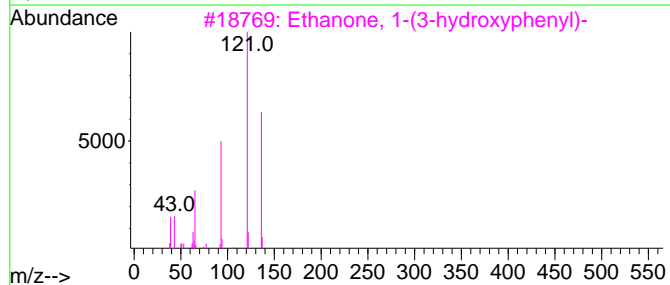
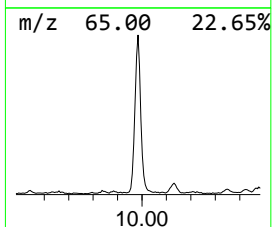
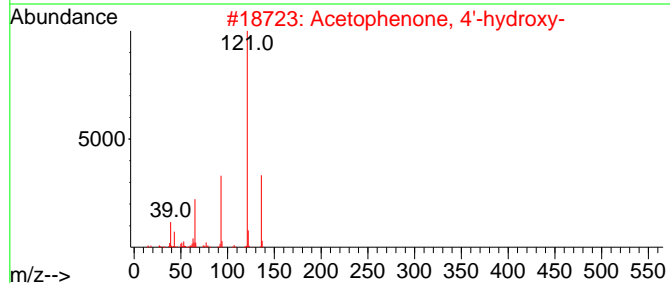
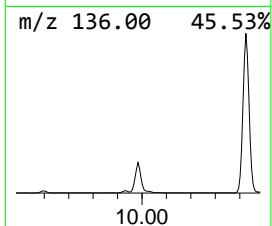
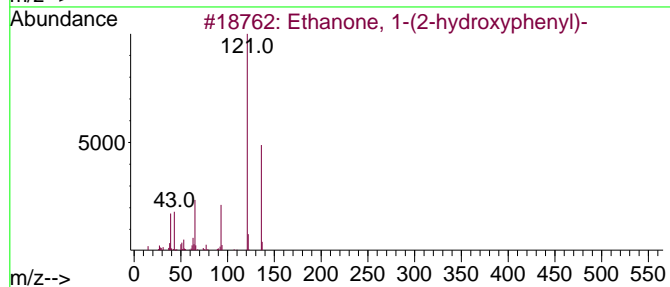
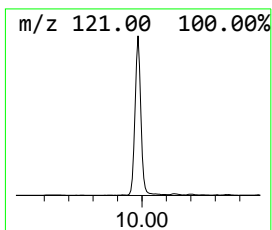
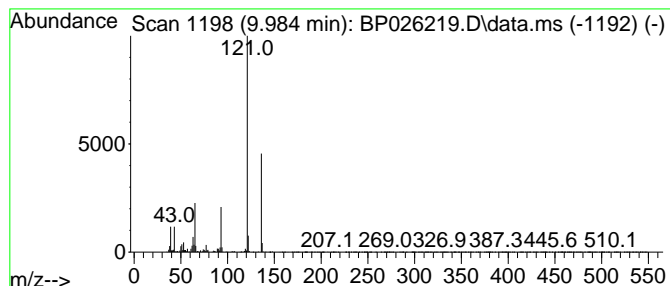
TIC Library : C:\Database\NIST20.L  
 TIC Integration Parameters: LSCINT.P

\*\*\*\*\*  
 Peak Number 7 Ethanone, 1-(2-hydroxyphenyl)- Concentration Rank 9

R.T.	EstConc	Area	Relative to ISTD	R.T.
9.984	10.72 ng	1271020	Naphthalene-d8	10.425

Hit#	of	5	Tentative ID	MW	MolForm	CAS#	Qual
1			Ethanone, 1-(2-hydroxyphenyl)-	136	C8H8O2	000118-93-4	97
2			Acetophenone, 4'-hydroxy-	136	C8H8O2	000099-93-4	94
3			Ethanone, 1-(3-hydroxyphenyl)-	136	C8H8O2	000121-71-1	83
4			2-Acetoxyacetophenone	178	C10H10O3	007250-94-4	59
5			3-Isopropylphenyl N-methylcarbam...	193	C11H15NO2	1000470-98-8	59



Data Path : Z:\svoasrv\HPCHEM1\BNA\_P\Data\BP120225\  
 Data File : BP026219.D  
 Acq On : 02 Dec 2025 22:43  
 Operator : RC/JU  
 Sample : Q3742-03  
 Misc :  
 ALS Vial : 13 Sample Multiplier: 1

Instrument :  
 BNA\_P  
 ClientSampleId :  
 SB-1125-8

Quant Method : Z:\svoasrv\HPCHEM1\BNA\_P\Methods\8270E-BP111825.M  
 Quant Title : ASP BNA STANDARDS FOR 5 POINT CALIBRATION

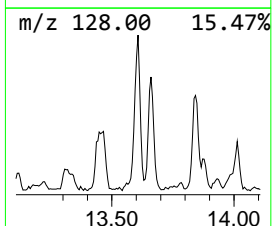
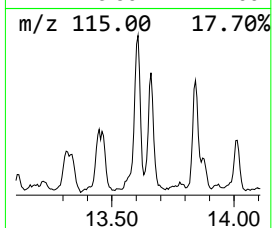
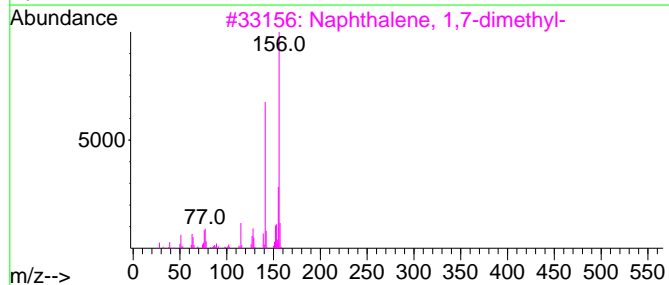
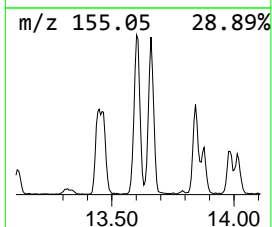
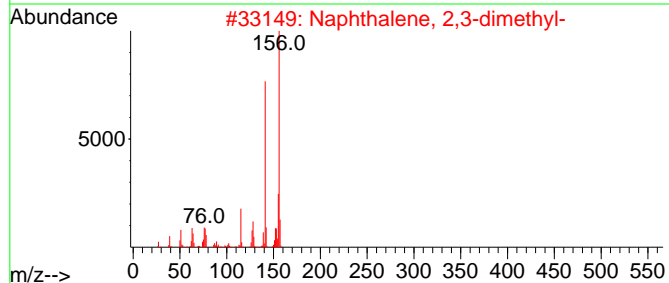
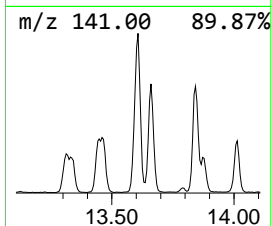
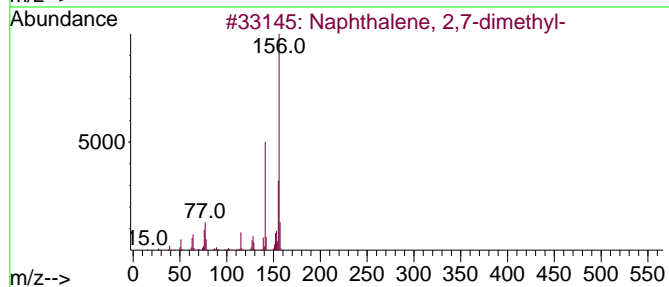
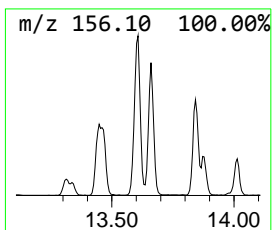
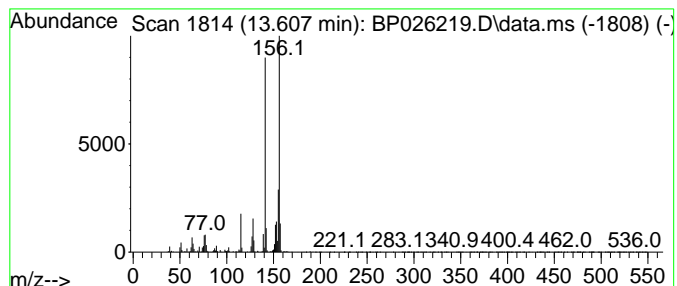
TIC Library : C:\Database\NIST20.L  
 TIC Integration Parameters: LSCINT.P

\*\*\*\*\*  
 Peak Number 8 Naphthalene, 2,7-dimethyl- Concentration Rank 16

R.T.	EstConc	Area	Relative to ISTD	R.T.
13.607	6.06 ng	1055300	Acenaphthene-d10	14.290

Hit#	of	5	Tentative ID	MW	MolForm	CAS#	Qual
1			Naphthalene, 2,7-dimethyl-	156	C12H12	000582-16-1	97
2			Naphthalene, 2,3-dimethyl-	156	C12H12	000581-40-8	97
3			Naphthalene, 1,7-dimethyl-	156	C12H12	000575-37-1	97
4			Naphthalene, 1,4-dimethyl-	156	C12H12	000571-58-4	97
5			Naphthalene, 2,6-dimethyl-	156	C12H12	000581-42-0	97



Data Path : Z:\svoasrv\HPCHEM1\BNA\_P\Data\BP120225\  
 Data File : BP026219.D  
 Acq On : 02 Dec 2025 22:43  
 Operator : RC/JU  
 Sample : Q3742-03  
 Misc :  
 ALS Vial : 13 Sample Multiplier: 1

Instrument :  
 BNA\_P  
 ClientSampleId :  
 SB-1125-8

Quant Method : Z:\svoasrv\HPCHEM1\BNA\_P\Methods\8270E-BP111825.M  
 Quant Title : ASP BNA STANDARDS FOR 5 POINT CALIBRATION

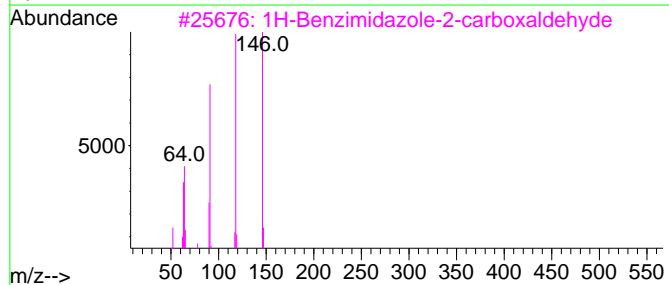
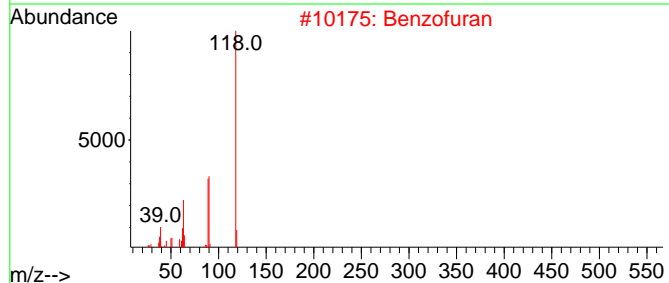
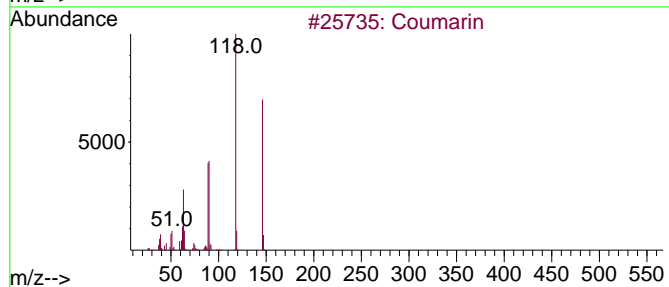
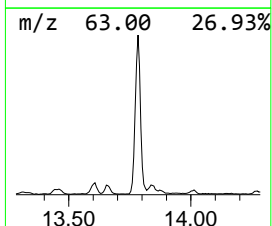
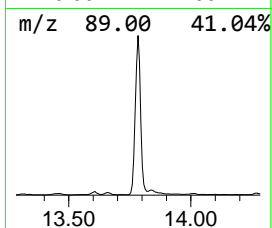
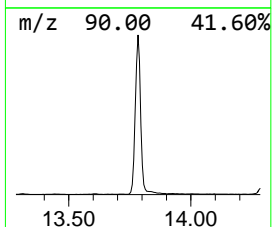
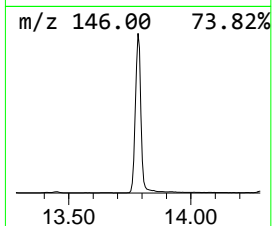
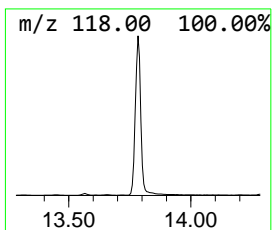
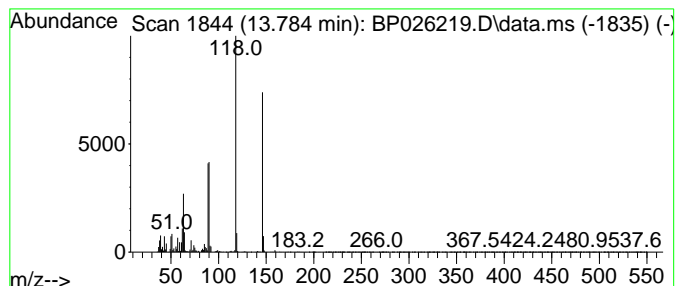
TIC Library : C:\Database\NIST20.L  
 TIC Integration Parameters: LSCINT.P

\*\*\*\*\*  
 Peak Number 9 Coumarin Concentration Rank 3

R.T.	EstConc	Area	Relative to ISTD	R.T.
13.784	20.26 ng	3527740	Acenaphthene-d10	14.290

Hit#	of 5	Tentative ID	MW	MolForm	CAS#	Qual
1		Coumarin	146	C9H6O2	000091-64-5	98
2		Benzofuran	118	C8H6O	000271-89-6	96
3		1H-Benzimidazole-2-carboxaldehyde	146	C8H6N2O	003314-30-5	58
4		1H-Tetrazole, 5-phenyl-	146	C7H6N4	018039-42-4	53
5		Phthalazin-1-one	146	C8H6N2O	000119-39-1	53



Data Path : Z:\svoasrv\HPCHEM1\BNA\_P\Data\BP120225\  
 Data File : BP026219.D  
 Acq On : 02 Dec 2025 22:43  
 Operator : RC/JU  
 Sample : Q3742-03  
 Misc :  
 ALS Vial : 13 Sample Multiplier: 1

Instrument :  
 BNA\_P  
 ClientSampleId :  
 SB-1125-8

Quant Method : Z:\svoasrv\HPCHEM1\BNA\_P\Methods\8270E-BP111825.M  
 Quant Title : ASP BNA STANDARDS FOR 5 POINT CALIBRATION

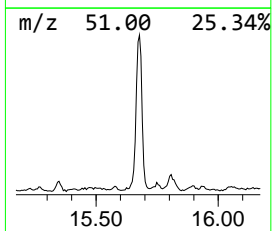
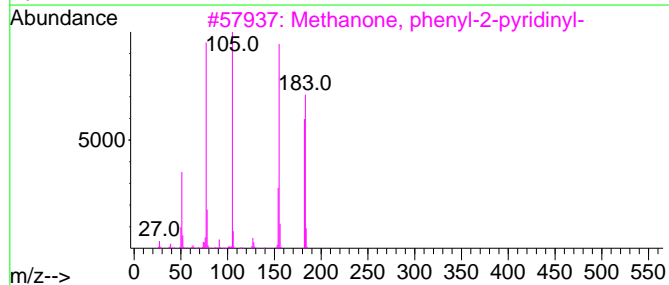
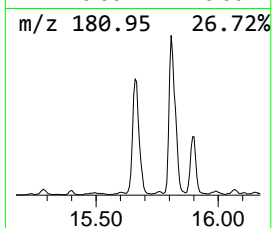
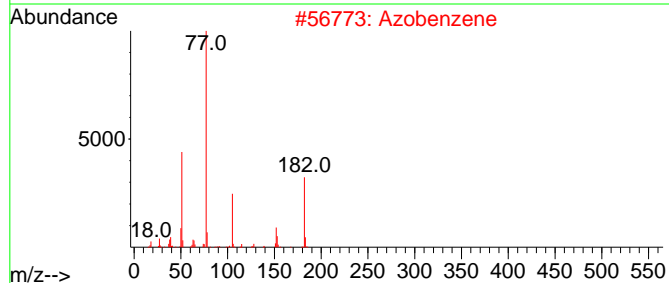
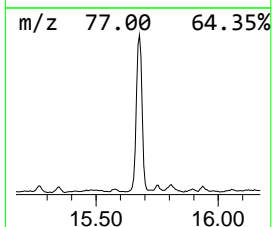
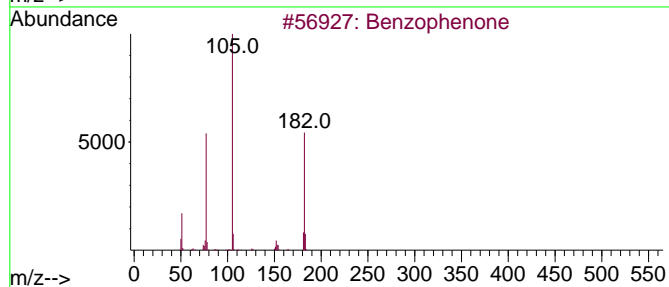
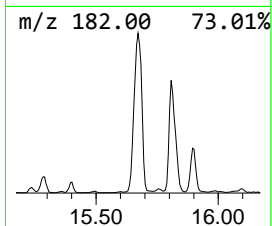
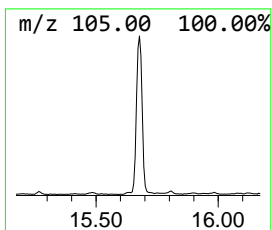
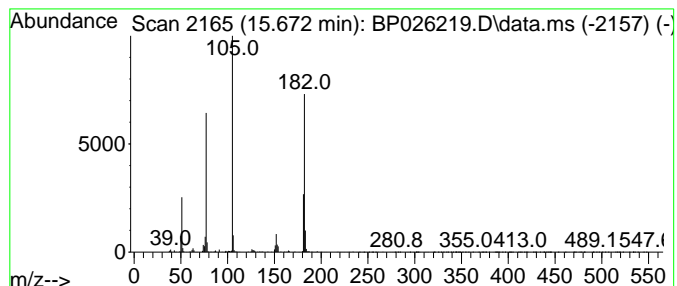
TIC Library : C:\Database\NIST20.L  
 TIC Integration Parameters: LSCINT.P

\*\*\*\*\*  
 Peak Number 10 Benzophenone Concentration Rank 7

R.T.	EstConc	Area	Relative to ISTD	R.T.
15.672	11.48 ng	1998740	Acenaphthene-d10	14.290

Hit#	of 5	Tentative ID	MW	MolForm	CAS#	Qual
1		Benzophenone	182	C13H10O	000119-61-9	95
2		Azobenzene	182	C12H10N2	000103-33-3	53
3		Methanone, phenyl-2-pyridinyl-	183	C12H9NO	000091-02-1	45
4		9H-Pyrido[3,4-b]indole, 1-methyl-	182	C12H10N2	000486-84-0	38
5		Phenazine, 5,10-dihydro-	182	C12H10N2	000613-32-1	38





Data Path : Z:\svoasrv\HPCHEM1\BNA\_P\Data\BP120225\  
 Data File : BP026219.D  
 Acq On : 02 Dec 2025 22:43  
 Operator : RC/JU  
 Sample : Q3742-03  
 Misc :  
 ALS Vial : 13 Sample Multiplier: 1

Instrument :  
 BNA\_P  
 ClientSampleId :  
 SB-1125-8

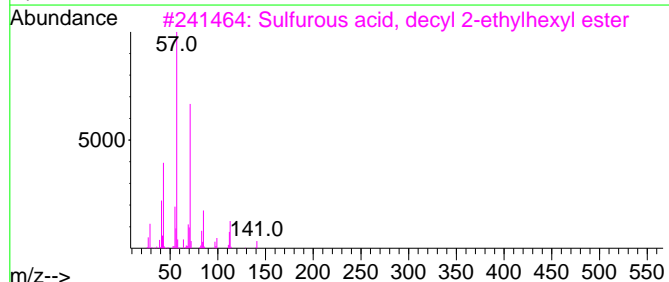
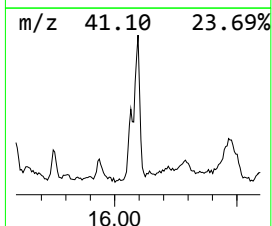
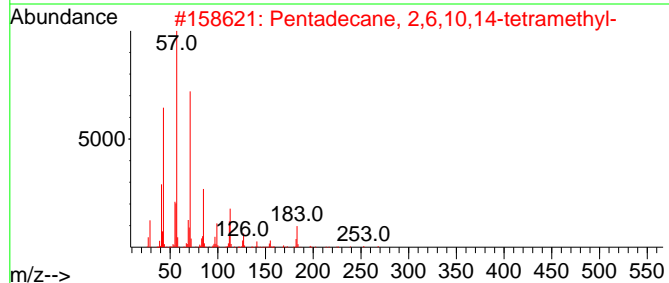
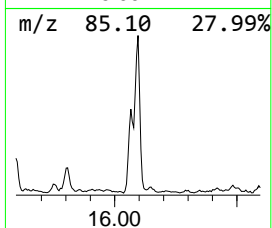
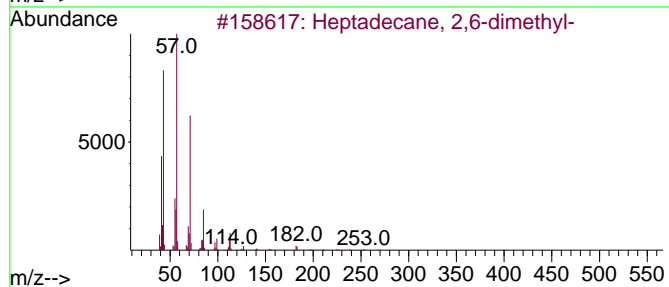
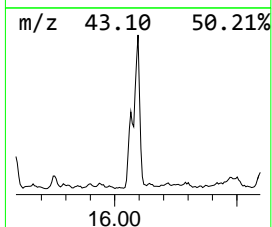
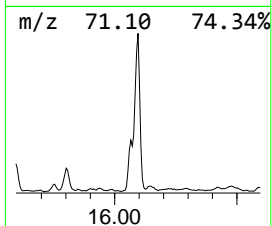
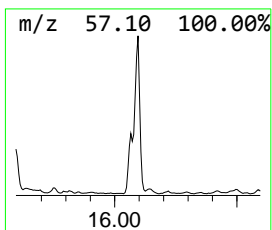
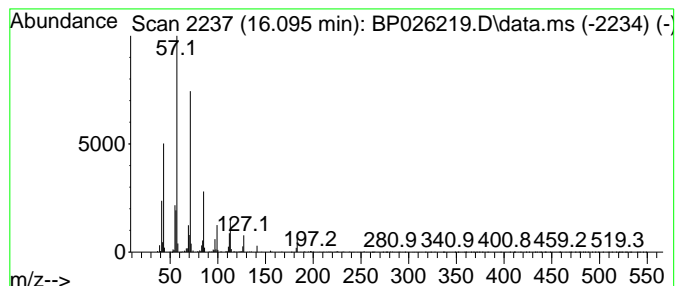
Quant Method : Z:\svoasrv\HPCHEM1\BNA\_P\Methods\8270E-BP111825.M  
 Quant Title : ASP BNA STANDARDS FOR 5 POINT CALIBRATION

TIC Library : C:\Database\NIST20.L  
 TIC Integration Parameters: LSCINT.P

\*\*\*\*\*  
 Peak Number 11 Heptadecane, 2,6-dimethyl- Concentration Rank 18

R.T.	EstConc	Area	Relative to ISTD	R.T.
16.095	4.98 ng	902759	Phenanthrene-d10	17.095

Hit#	of 5	Tentative ID	MW	MolForm	CAS#	Qual
1		Heptadecane, 2,6-dimethyl-	268	C19H40	054105-67-8	91
2		Pentadecane, 2,6,10,14-tetramethyl-	268	C19H40	001921-70-6	90
3		Sulfurous acid, decyl 2-ethylhex...	334	C18H38O3S	1000309-19-3	80
4		Dodecane, 4,6-dimethyl-	198	C14H30	061141-72-8	80
5		Hexadecane, 2,6,10,14-tetramethyl-	282	C20H42	000638-36-8	80



Data Path : Z:\svoasrv\HPCHEM1\BNA\_P\Data\BP120225\  
 Data File : BP026219.D  
 Acq On : 02 Dec 2025 22:43  
 Operator : RC/JU  
 Sample : Q3742-03  
 Misc :  
 ALS Vial : 13 Sample Multiplier: 1

Instrument :  
 BNA\_P  
 ClientSampleId :  
 SB-1125-8

Quant Method : Z:\svoasrv\HPCHEM1\BNA\_P\Methods\8270E-BP111825.M  
 Quant Title : ASP BNA STANDARDS FOR 5 POINT CALIBRATION

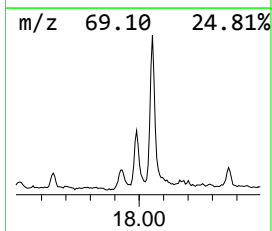
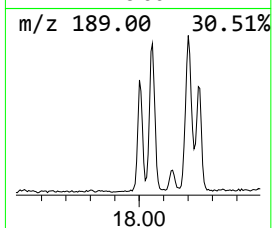
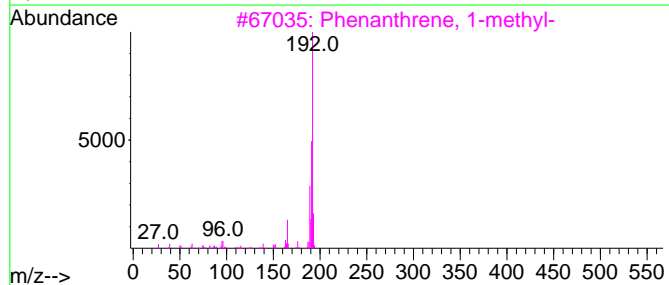
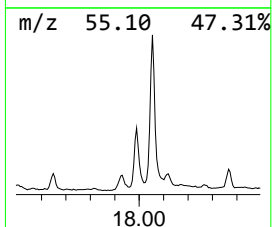
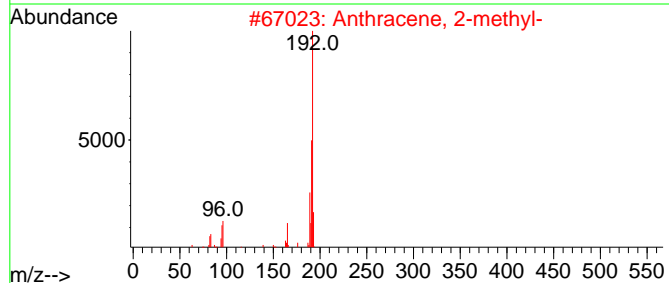
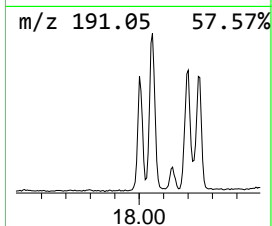
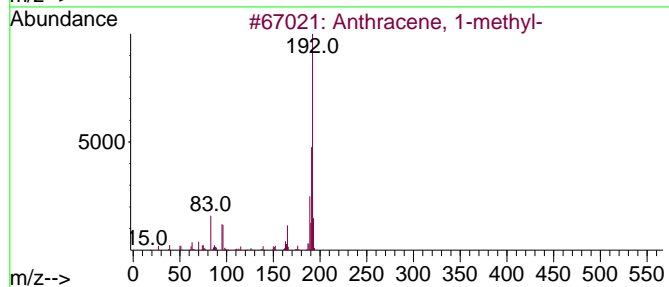
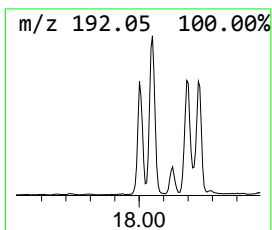
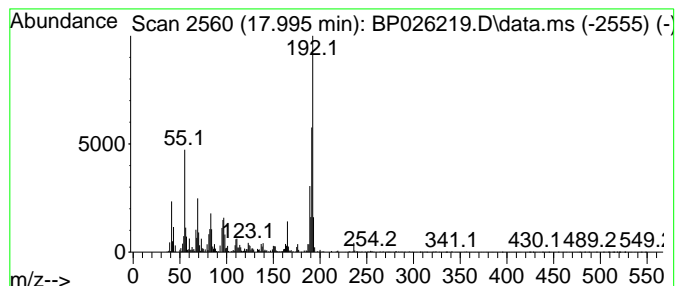
TIC Library : C:\Database\NIST20.L  
 TIC Integration Parameters: LSCINT.P

\*\*\*\*\*  
 Peak Number 12 Anthracene, 1-methyl- Concentration Rank 15

R.T.	EstConc	Area	Relative to ISTD	R.T.
17.995	6.24 ng	1130670	Phenanthrene-d10	17.095

Hit#	of 5	Tentative ID	MW	MolForm	CAS#	Qual
1		Anthracene, 1-methyl-	192	C15H12	000610-48-0	98
2		Anthracene, 2-methyl-	192	C15H12	000613-12-7	96
3		Phenanthrene, 1-methyl-	192	C15H12	000832-69-9	96
4		Anthracene, 9-methyl-	192	C15H12	000779-02-2	96
5		Phenanthrene, 2-methyl-	192	C15H12	002531-84-2	95



Data Path : Z:\svoasrv\HPCHEM1\BNA\_P\Data\BP120225\  
 Data File : BP026219.D  
 Acq On : 02 Dec 2025 22:43  
 Operator : RC/JU  
 Sample : Q3742-03  
 Misc :  
 ALS Vial : 13 Sample Multiplier: 1

Instrument :  
 BNA\_P  
 ClientSampleId :  
 SB-1125-8

Quant Method : Z:\svoasrv\HPCHEM1\BNA\_P\Methods\8270E-BP111825.M  
 Quant Title : ASP BNA STANDARDS FOR 5 POINT CALIBRATION

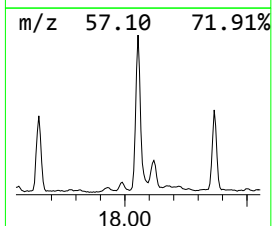
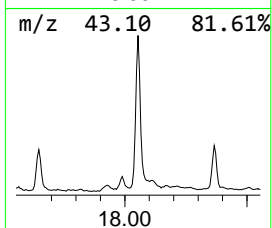
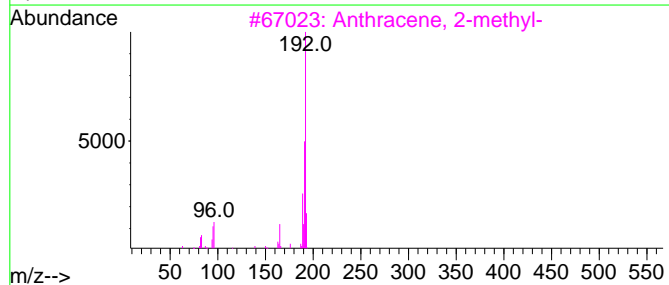
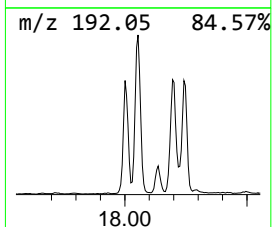
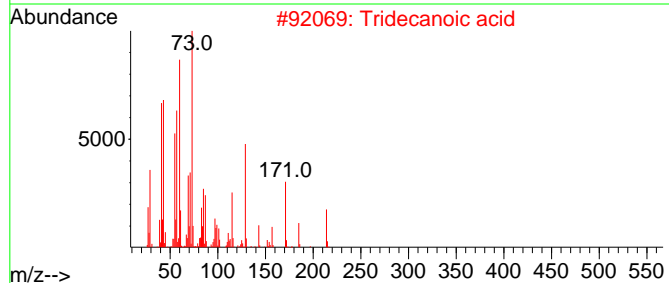
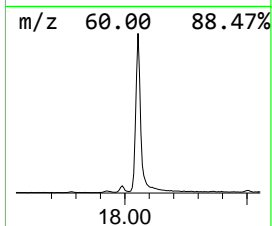
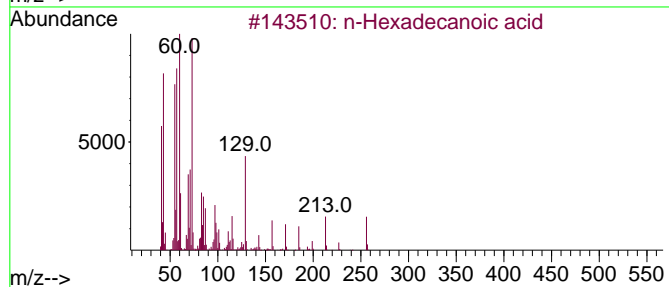
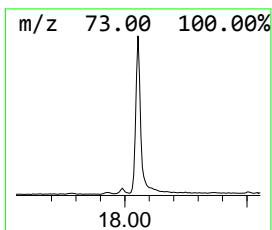
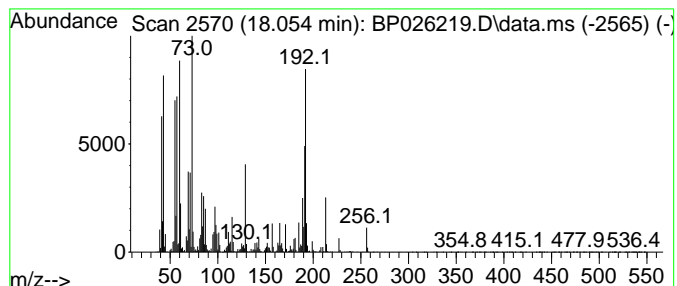
TIC Library : C:\Database\NIST20.L  
 TIC Integration Parameters: LSCINT.P

\*\*\*\*\*  
 Peak Number 13 n-Hexadecanoic acid Concentration Rank 2

R.T.	EstConc	Area	Relative to ISTD	R.T.
18.054	21.21 ng	3843900	Phenanthrene-d10	17.095

Hit#	of 5	Tentative ID	MW	MolForm	CAS#	Qual
1		n-Hexadecanoic acid	256	C16H32O2	000057-10-3	98
2		Tridecanoic acid	214	C13H26O2	000638-53-9	95
3		Anthracene, 2-methyl-	192	C15H12	000613-12-7	93
4		1H-Cyclopropa[1]phenanthrene,1a,...	192	C15H12	000949-41-7	91
5		Phenanthrene, 2-methyl-	192	C15H12	002531-84-2	91



Data Path : Z:\svoasrv\HPCHEM1\BNA\_P\Data\BP120225\  
 Data File : BP026219.D  
 Acq On : 02 Dec 2025 22:43  
 Operator : RC/JU  
 Sample : Q3742-03  
 Misc :  
 ALS Vial : 13 Sample Multiplier: 1

Instrument :  
 BNA\_P  
 ClientSampleId :  
 SB-1125-8

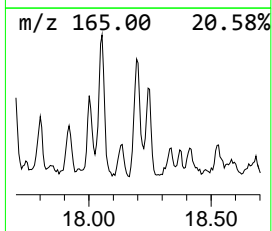
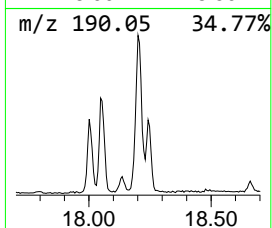
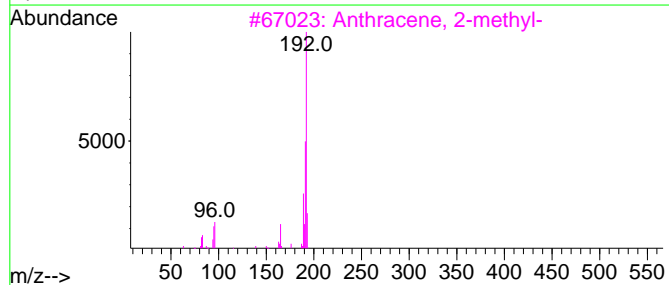
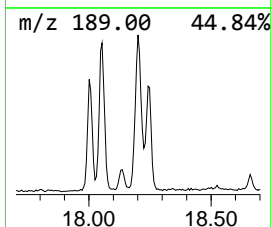
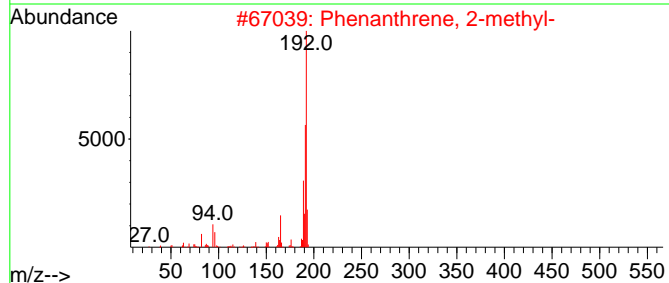
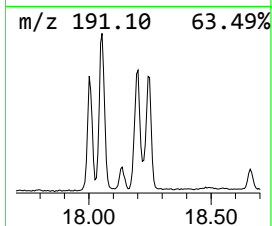
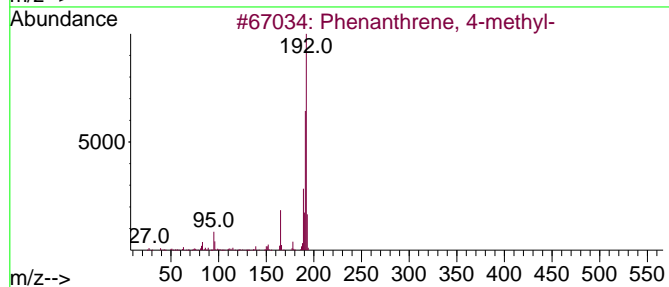
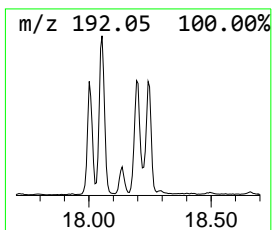
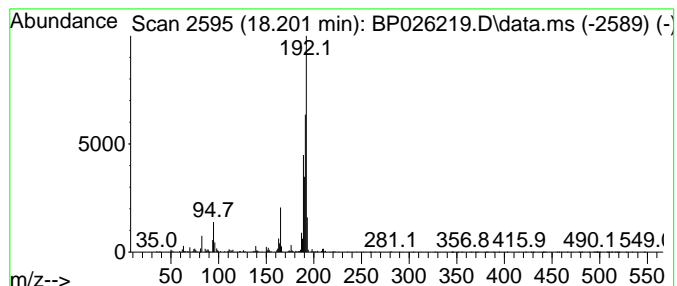
Quant Method : Z:\svoasrv\HPCHEM1\BNA\_P\Methods\8270E-BP111825.M  
 Quant Title : ASP BNA STANDARDS FOR 5 POINT CALIBRATION

TIC Library : C:\Database\NIST20.L  
 TIC Integration Parameters: LSCINT.P

\*\*\*\*\*  
 Peak Number 14 Phenanthrene, 4-methyl- Concentration Rank 19

R.T.	EstConc	Area	Relative to ISTD	R.T.
18.201	4.73 ng	857216	Phenanthrene-d10	17.095

Hit#	of 5	Tentative ID	MW	MolForm	CAS#	Qual
1		Phenanthrene, 4-methyl-	192	C15H12	000832-64-4	93
2		Phenanthrene, 2-methyl-	192	C15H12	002531-84-2	86
3		Anthracene, 2-methyl-	192	C15H12	000613-12-7	86
4		Phenanthrene, 1-methyl-	192	C15H12	000832-69-9	86
5		Anthracene, 1-methyl-	192	C15H12	000610-48-0	70



Data Path : Z:\svoasrv\HPCHEM1\BNA\_P\Data\BP120225\  
 Data File : BP026219.D  
 Acq On : 02 Dec 2025 22:43  
 Operator : RC/JU  
 Sample : Q3742-03  
 Misc :  
 ALS Vial : 13 Sample Multiplier: 1

Instrument :  
 BNA\_P  
 ClientSampleId :  
 SB-1125-8

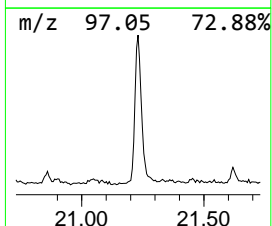
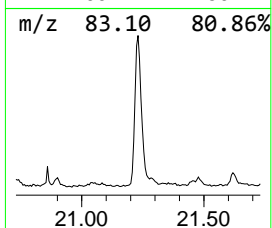
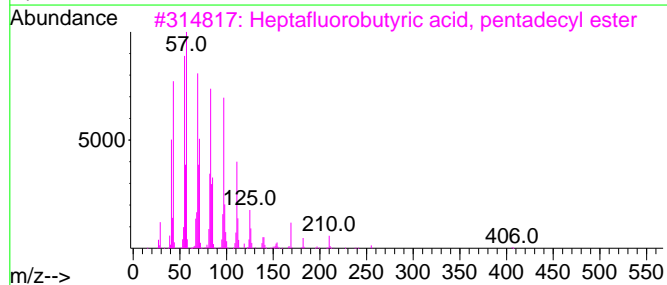
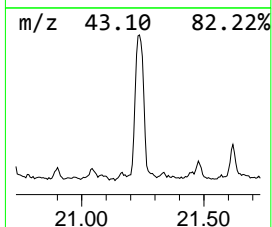
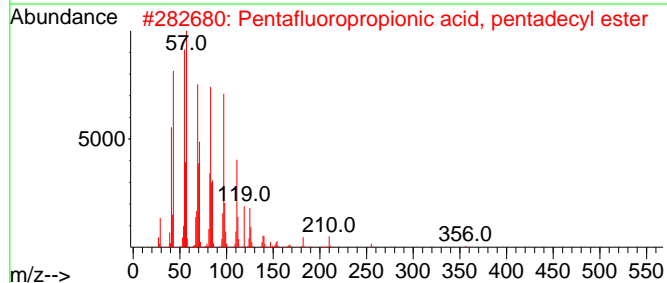
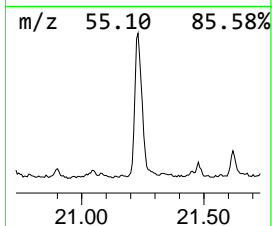
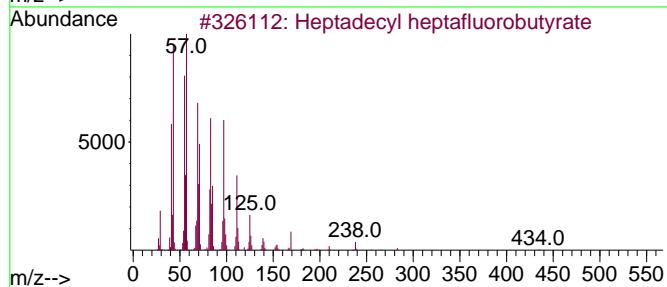
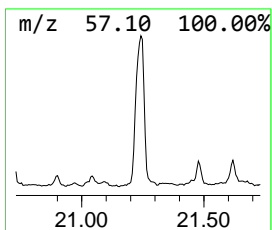
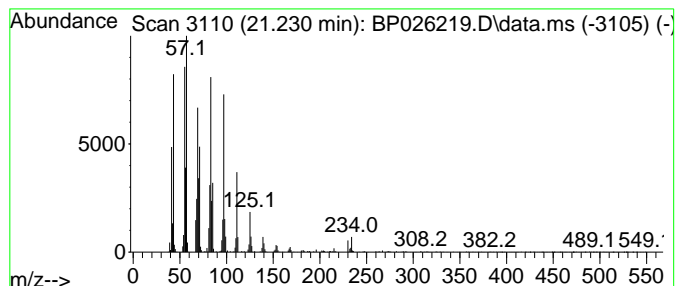
Quant Method : Z:\svoasrv\HPCHEM1\BNA\_P\Methods\8270E-BP111825.M  
 Quant Title : ASP BNA STANDARDS FOR 5 POINT CALIBRATION

TIC Library : C:\Database\NIST0.L  
 TIC Integration Parameters: LSCINT.P

\*\*\*\*\*  
 Peak Number 16 Heptadecyl heptafluorobutyrate Concentration Rank 6

R.T.	EstConc	Area	Relative to ISTD	R.T.
21.230	13.00 ng	3069000	Chrysene-d12	21.536

Hit#	of	5	Tentative ID	MW	MolForm	CAS#	Qual
1			Heptadecyl heptafluorobutyrate	452	C21H35F7O2	959085-66-6	94
2			Pentafluoropropionic acid, penta...	374	C18H31F5O2	959092-08-1	94
3			Heptafluorobutyric acid, pentade...	424	C19H31F7O2	959261-23-5	94
4			Heptadecyl trifluoroacetate	352	C19H35F3O2	1010351-87-0	91
5			1-Docosene	308	C22H44	001599-67-3	91



Data Path : Z:\svoasrv\HPCHEM1\BNA\_P\Data\BP120225\  
 Data File : BP026219.D  
 Acq On : 02 Dec 2025 22:43  
 Operator : RC/JU  
 Sample : Q3742-03  
 Misc :  
 ALS Vial : 13 Sample Multiplier: 1

Instrument :  
 BNA\_P  
 ClientSampleId :  
 SB-1125-8

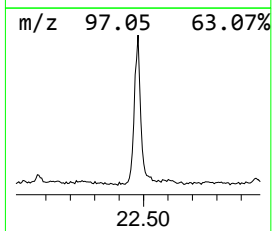
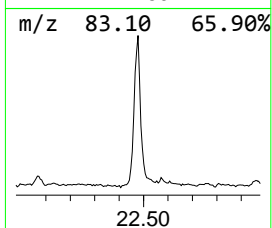
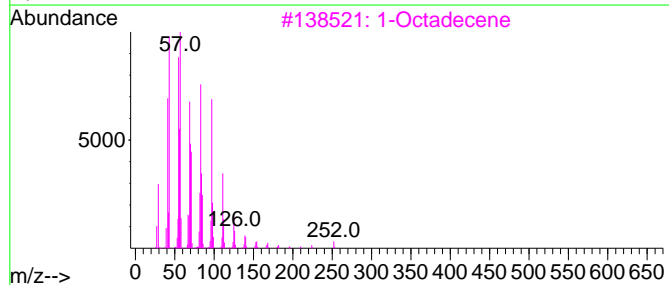
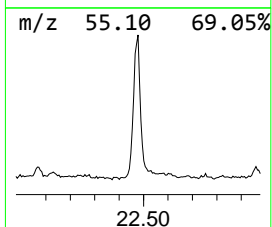
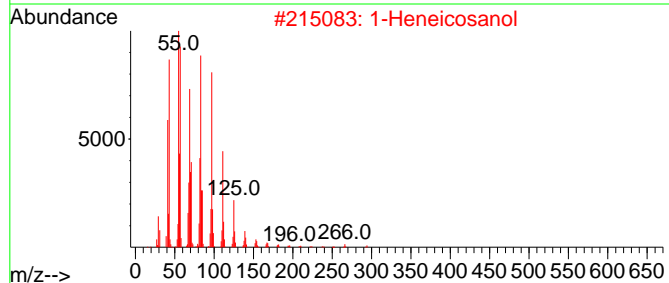
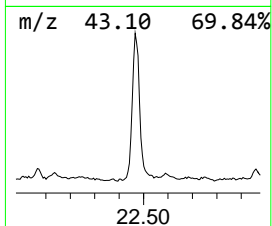
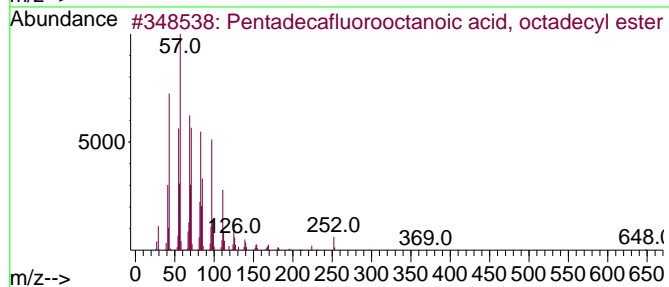
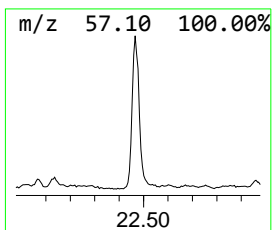
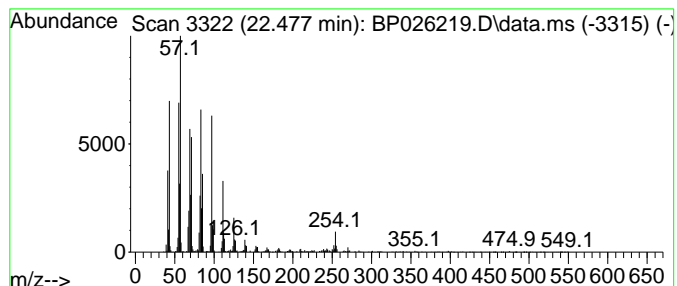
Quant Method : Z:\svoasrv\HPCHEM1\BNA\_P\Methods\8270E-BP111825.M  
 Quant Title : ASP BNA STANDARDS FOR 5 POINT CALIBRATION

TIC Library : C:\Database\NIST20.L  
 TIC Integration Parameters: LSCINT.P

\*\*\*\*\*  
 Peak Number 17 Pentadecafluorooctanoic aci... Concentration Rank 8

R.T.	EstConc	Area	Relative to ISTD	R.T.
22.477	11.17 ng	2636560	Chrysene-d12	21.536

Hit#	of 5	Tentative ID	MW	MolForm	CAS#	Qual
1		Pentadecafluorooctanoic acid, oc...	666	C26H37F15O2	1000406-04-8	94
2		1-Heneicosanol	312	C21H44O	015594-90-8	93
3		1-Octadecene	252	C18H36	000112-88-9	92
4		Nonadecyl trifluoroacetate	380	C21H39F3O2	1000351-76-3	91
5		Eicosyl trifluoroacetate	394	C22H41F3O2	1000351-75-2	91



Data Path : Z:\svoasrv\HPCHEM1\BNA\_P\Data\BP120225\  
 Data File : BP026219.D  
 Acq On : 02 Dec 2025 22:43  
 Operator : RC/JU  
 Sample : Q3742-03  
 Misc :  
 ALS Vial : 13 Sample Multiplier: 1

Instrument :  
 BNA\_P  
 ClientSampleId :  
 SB-1125-8

Quant Method : Z:\svoasrv\HPCHEM1\BNA\_P\Methods\8270E-BP111825.M  
 Quant Title : ASP BNA STANDARDS FOR 5 POINT CALIBRATION

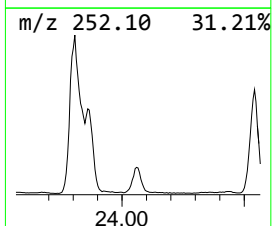
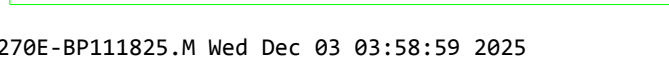
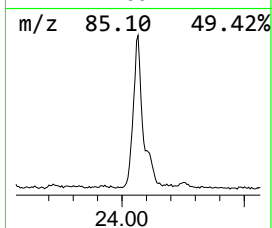
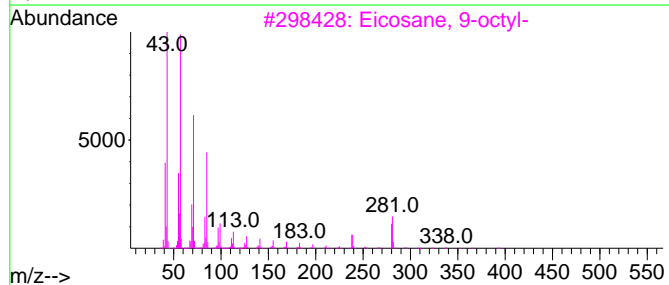
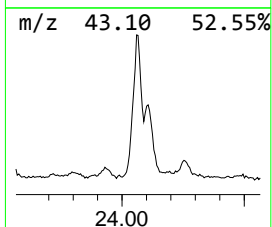
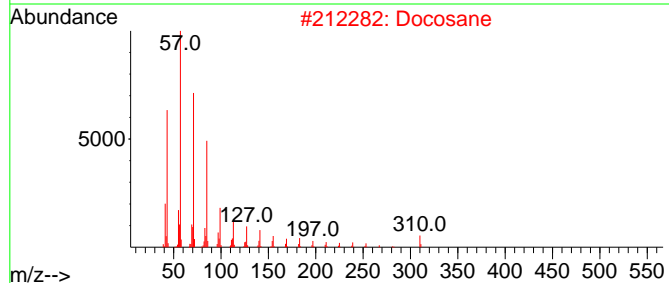
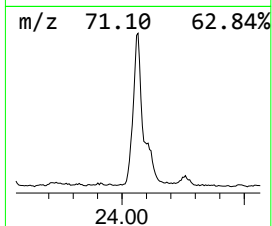
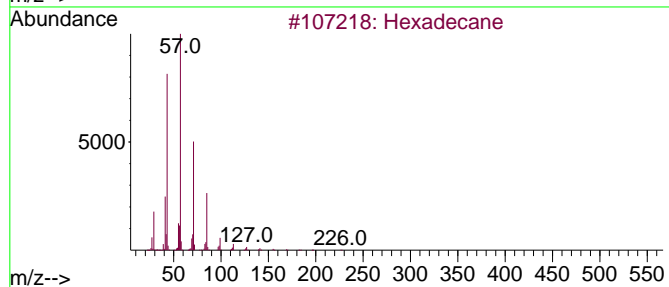
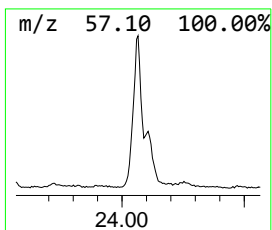
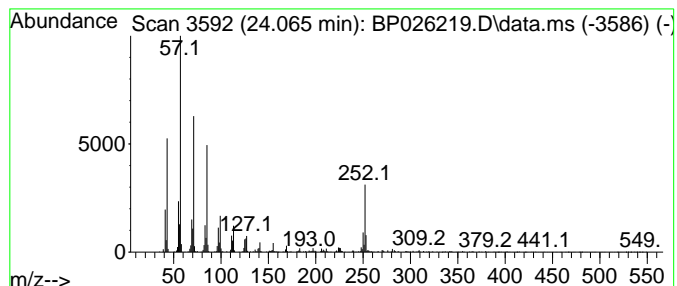
TIC Library : C:\Database\NIST20.L  
 TIC Integration Parameters: LSCINT.P

\*\*\*\*\*  
 Peak Number 18 Hexadecane Concentration Rank 11

R.T.	EstConc	Area	Relative to ISTD	R.T.
24.066	7.56 ng	1329270	Perylene-d12	24.836

Hit# of 5	Tentative ID	MW	MolForm	CAS#	Qual
1	Hexadecane	226	C16H34	000544-76-3	94
2	Docosane	310	C22H46	000629-97-0	93
3	Eicosane, 9-octyl-	394	C28H58	013475-77-9	89
4	Hentriacontane	437	C31H64	000630-04-6	81
5	Octacosane	394	C28H58	000630-02-4	76



Data Path : Z:\svoasrv\HPCHEM1\BNA\_P\Data\BP120225\  
 Data File : BP026219.D  
 Acq On : 02 Dec 2025 22:43  
 Operator : RC/JU  
 Sample : Q3742-03  
 Misc :  
 ALS Vial : 13 Sample Multiplier: 1

Instrument :  
 BNA\_P  
 ClientSampleId :  
 SB-1125-8

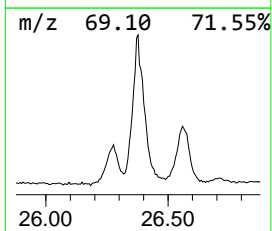
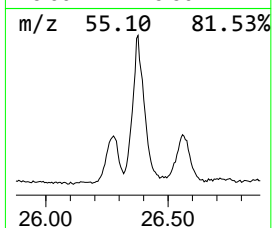
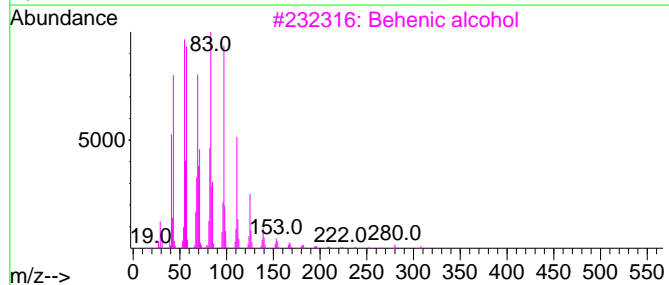
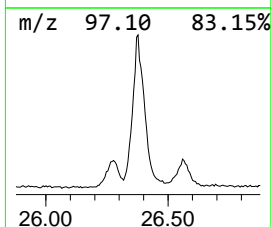
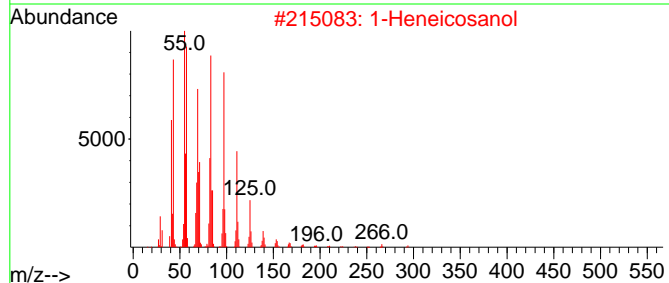
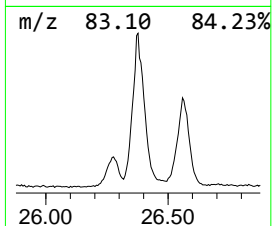
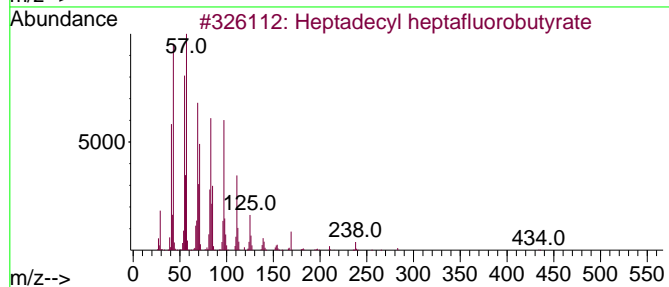
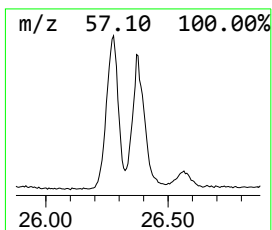
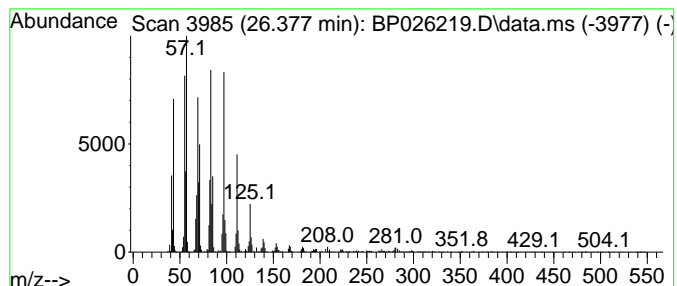
Quant Method : Z:\svoasrv\HPCHEM1\BNA\_P\Methods\8270E-BP111825.M  
 Quant Title : ASP BNA STANDARDS FOR 5 POINT CALIBRATION

TIC Library : C:\Database\NIST0.L  
 TIC Integration Parameters: LSCINT.P

\*\*\*\*\*  
 Peak Number 19 1-Heneicosanol Concentration Rank 4

R.T.	EstConc	Area	Relative to ISTD	R.T.
26.377	20.09 ng	3533880	Perylene-d12	24.836

Hit#	of 5	Tentative ID	MW	MolForm	CAS#	Qual
1		Heptadecyl heptafluorobutyrate	452	C21H35F7O2	959085-66-6	94
2		1-Heneicosanol	312	C21H44O	015594-90-8	93
3		Behenic alcohol	326	C22H46O	000661-19-8	93
4		n-Nonadecanol-1	284	C19H40O	001454-84-8	93
5		n-Tetracosanol-1	354	C24H50O	000506-51-4	93





Data Path : Z:\svoasrv\HPCHEM1\BNA\_P\Data\BP120225\  
 Data File : BP026219.D  
 Acq On : 02 Dec 2025 22:43  
 Operator : RC/JU  
 Sample : Q3742-03  
 Misc :  
 ALS Vial : 13 Sample Multiplier: 1

Instrument :  
 BNA\_P  
 ClientSampleId :  
 SB-1125-8

Quant Method : Z:\svoasrv\HPCHEM1\BNA\_P\Methods\8270E-BP111825.M  
 Quant Title : ASP BNA STANDARDS FOR 5 POINT CALIBRATION

TIC Library : C:\Database\NIST0.L  
 TIC Integration Parameters: LSCINT.P

TIC Top Hit name	RT	EstConc	Units	Response	--Internal Standard--			
					#	RT	Resp	Conc
Ethanone, 1-(2-...	9.984	10.7	ng	1271020	2	10.425	2371650	20.0
Naphthalene, 2,...	13.607	6.1	ng	1055300	3	14.290	3482070	20.0
Coumarin	13.784	20.3	ng	3527740	3	14.290	3482070	20.0
Benzophenone	15.672	11.5	ng	1998740	3	14.290	3482070	20.0
Heptadecane, 2,...	16.095	5.0	ng	902759	4	17.095	3624440	20.0
Anthracene, 1-m...	17.995	6.2	ng	1130670	4	17.095	3624440	20.0
n-Hexadecanoic ...	18.054	21.2	ng	3843900	4	17.095	3624440	20.0
Phenanthrene, 4...	18.201	4.7	ng	857216	4	17.095	3624440	20.0
Heptadecyl hept...	21.230	13.0	ng	3069000	5	21.536	4722180	20.0
Pentadecafluoro...	22.477	11.2	ng	2636560	5	21.536	4722180	20.0
Hexadecane	24.066	7.6	ng	1329270	6	24.836	3518840	20.0
1-Heneicosanol	26.377	20.1	ng	3533880	6	24.836	3518840	20.0