

Data Path : Z:\svoasrv\HPCHEM1\BNA_P\Data\BP120225\
 Data File : BP026220.D
 Acq On : 02 Dec 2025 23:24
 Operator : RC/JU
 Sample : Q3742-05
 Misc :
 ALS Vial : 14 Sample Multiplier: 1

Instrument :
 BNA_P
 ClientSampleId :
 SB-1125-21

Integration Parameters: rteint.p
 Integrator: RTE
 Smoothing : ON
 Sampling : 1
 Start Thrs : 0.2
 Stop Thrs : 0
 Filtering: 5
 Min Area: 3 % of largest Peak
 Max Peaks: 100
 Peak Location: TOP

If leading or trailing edge < 100 prefer < Baseline drop else tangent >
 Peak separation: 5

Method : Z:\svoasrv\HPCHEM1\BNA_P\Methods\8270E-BP111825.M
 Title : ASP BNA STANDARDS FOR 5 POINT CALIBRATION

Signal : TIC: BP026220.D\data.ms

peak #	R.T. min	first scan	max scan	last scan	PK TY	peak height	corr. area	corr. % max.	% of total
1	3.449	83	87	98	rVB4	43822	75008	1.20%	0.155%
2	4.825	316	321	333	rVB	446424	621396	9.92%	1.287%
3	5.284	392	399	407	rBV	1641496	2552775	40.74%	5.289%
4	5.713	467	472	482	rVB3	36963	70883	1.13%	0.147%
5	6.843	654	664	682	rBV	1533947	2649451	42.29%	5.489%
6	7.654	796	802	813	rBV	871243	1454274	23.21%	3.013%
7	8.796	984	996	1008	rBV	954658	1699884	27.13%	3.522%
8	10.425	1264	1273	1279	rBV	1261895	2158897	34.46%	4.473%
9	10.472	1279	1281	1286	rVV	69666	107298	1.71%	0.222%
10	10.525	1286	1290	1299	rVB4	38540	67090	1.07%	0.139%
11	12.089	1550	1556	1561	rBV	92212	151425	2.42%	0.314%
12	12.307	1587	1593	1601	rVB	78263	135221	2.16%	0.280%
13	12.895	1686	1693	1702	rBV	2704103	4057632	64.76%	8.407%
14	13.601	1803	1813	1818	rBV2	58976	108611	1.73%	0.225%
15	13.660	1818	1823	1829	rVB2	47155	76635	1.22%	0.159%
16	14.283	1921	1929	1937	rBV	2119154	3323264	53.04%	6.885%
17	14.695	1993	1999	2003	rBV2	37956	70239	1.12%	0.146%
18	15.348	2103	2110	2115	rBV2	61656	88177	1.41%	0.183%
19	15.672	2158	2165	2173	rVV	388724	622071	9.93%	1.289%
20	15.801	2180	2187	2197	rBV	2396722	3590271	57.30%	7.439%
21	16.060	2227	2231	2233	rBV4	45896	65438	1.04%	0.136%
22	16.089	2233	2236	2241	rVB	84431	117123	1.87%	0.243%
23	17.089	2400	2406	2411	rBV2	2354794	3975210	63.45%	8.236%
24	17.130	2411	2413	2420	rVB	279623	390560	6.23%	0.809%
25	17.219	2426	2428	2436	rVB	47778	72412	1.16%	0.150%
26	17.507	2472	2477	2489	rVB	287225	424969	6.78%	0.880%
27	17.636	2496	2499	2505	rBV2	51055	63565	1.01%	0.132%
28	17.995	2555	2560	2564	rBV2	54933	105143	1.68%	0.218%
29	18.048	2564	2569	2577	rVV2	857205	1335398	21.31%	2.767%
30	18.113	2578	2580	2587	rVV2	97597	181479	2.90%	0.376%
31	18.195	2590	2594	2598	rVV3	84186	164288	2.62%	0.340%
32	18.236	2599	2601	2610	rVB	55113	82351	1.31%	0.171%
33	18.366	2619	2623	2627	rBV	56251	76568	1.22%	0.159%
34	18.501	2641	2646	2653	rBV2	401935	577444	9.22%	1.196%
35	18.960	2720	2724	2726	rBV3	122026	167757	2.68%	0.348%
36	19.030	2733	2736	2742	rVB4	96670	138340	2.21%	0.287%

Data Path : Z:\svoasrv\HPCHEM1\BNA_P\Data\BP120225\
Data File : BP026220.D
Acq On : 02 Dec 2025 23:24
Operator : RC/JU
Sample : Q3742-05
Misc :
ALS Vial : 14 Sample Multiplier: 1

Instrument :
BNA_P
ClientSampleId :
SB-1125-21

Integration Parameters: rteint.p
Integrator: RTE
Smoothing : ON Filtering: 5
Sampling : 1 Min Area: 3 % of largest Peak
Start Thrs: 0.2 Max Peaks: 100
Stop Thrs : 0 Peak Location: TOP

If leading or trailing edge < 100 prefer < Baseline drop else tangent >
Peak separation: 5

Method : Z:\svoasrv\HPCHEM1\BNA_P\Methods\8270E-BP111825.M
Title : ASP BNA STANDARDS FOR 5 POINT CALIBRATION

37	19.142	2752	2755	2760	rVB	86647	119593	1.91%	0.248%
38	19.230	2766	2770	2778	rBV	404723	640160	10.22%	1.326%
39	19.389	2793	2797	2801	rBV	171601	230975	3.69%	0.479%
40	19.613	2830	2835	2844	rVB	326117	564315	9.01%	1.169%
41	19.836	2867	2873	2883	rVB	4512384	6265357	100.00%	12.981%
42	21.236	3107	3111	3123	rVB5	491092	1141016	18.21%	2.364%
43	21.542	3157	3163	3169	rBV2	2145623	3823361	61.02%	7.922%
44	24.859	3719	3727	3742	rVB	1242482	3862055	61.64%	8.002%

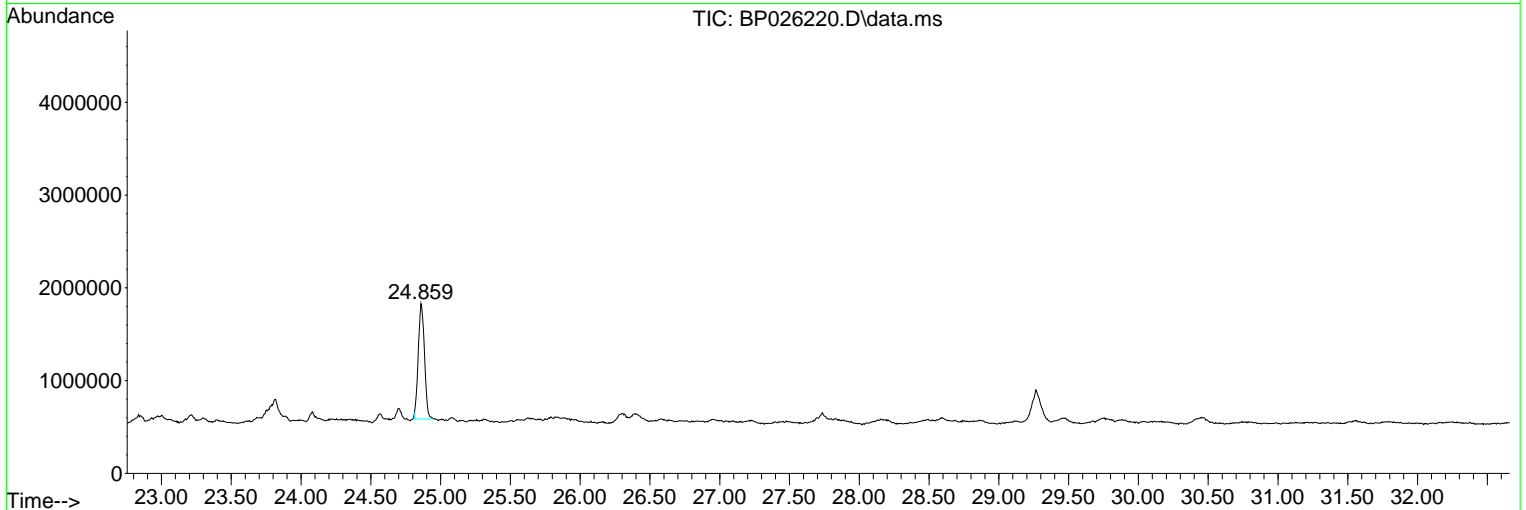
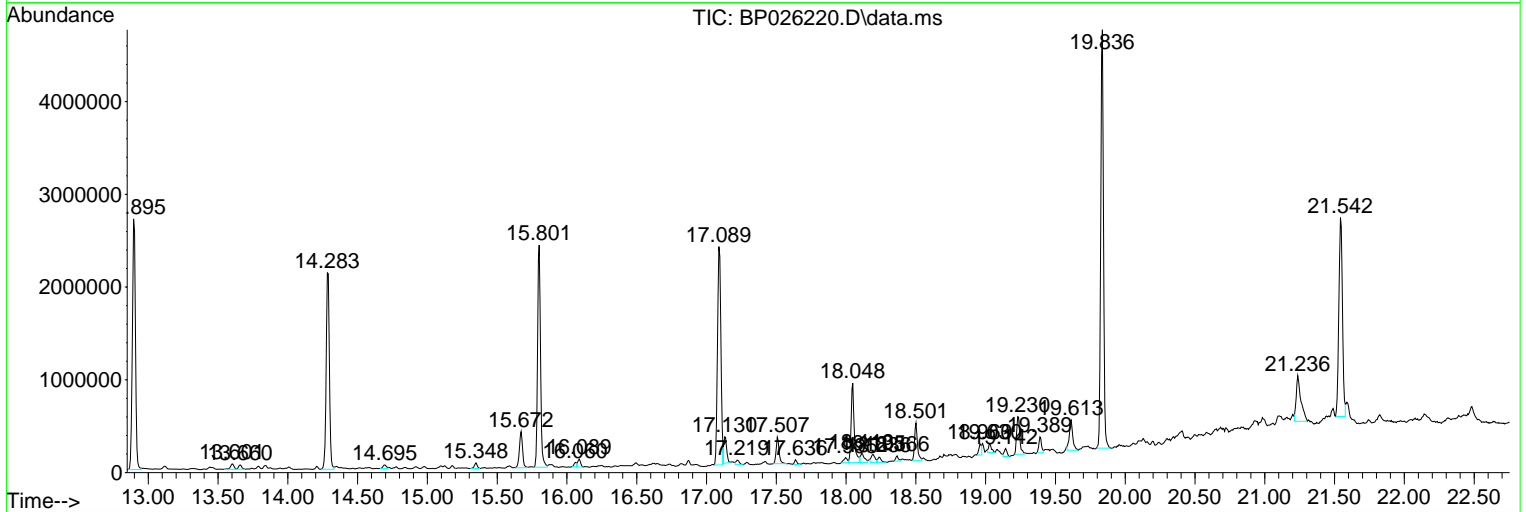
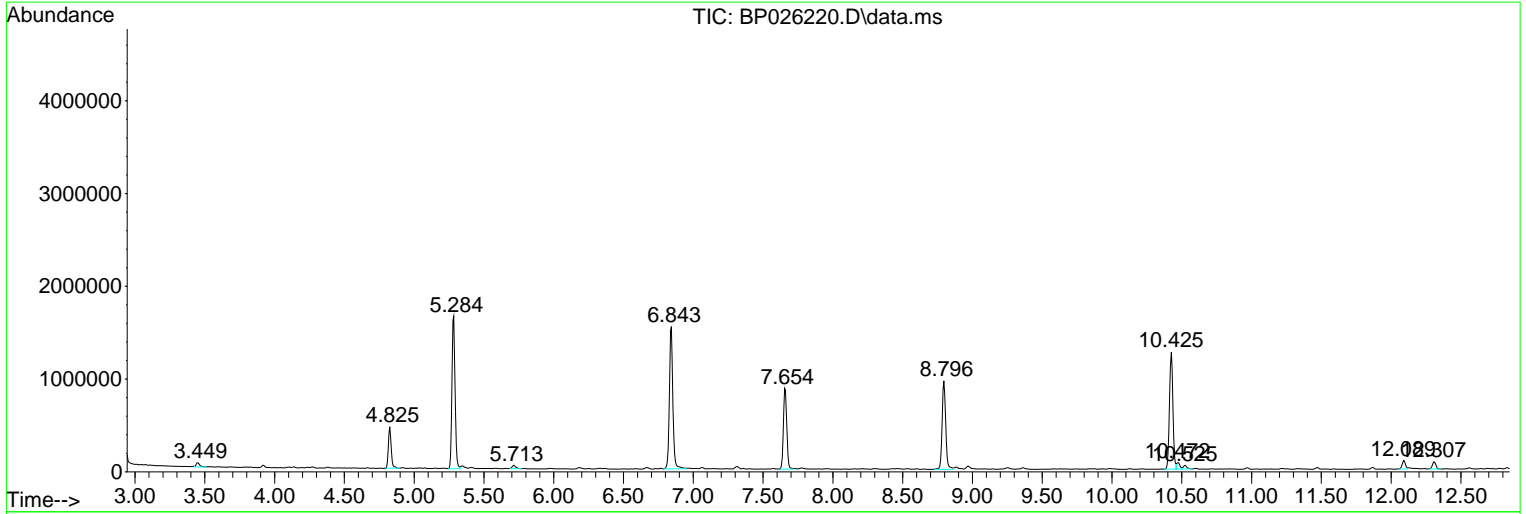
Sum of corrected areas: 48265379

Data Path : Z:\svoasrv\HPCHEM1\BNA_P\Data\BP120225\
 Data File : BP026220.D
 Acq On : 02 Dec 2025 23:24
 Operator : RC/JU
 Sample : Q3742-05
 Misc :
 ALS Vial : 14 Sample Multiplier: 1

Instrument :
 BNA_P
 ClientSampleId :
 SB-1125-21

Quant Method : Z:\svoasrv\HPCHEM1\BNA_P\Methods\8270E-BP111825.M
 Quant Title : ASP BNA STANDARDS FOR 5 POINT CALIBRATION

TIC Library : C:\Database\NIST20.L
 TIC Integration Parameters: LSCINT.P



Data Path : Z:\svoasrv\HPCHEM1\BNA_P\Data\BP120225\
 Data File : BP026220.D
 Acq On : 02 Dec 2025 23:24
 Operator : RC/JU
 Sample : Q3742-05
 Misc :
 ALS Vial : 14 Sample Multiplier: 1

Instrument :
 BNA_P
 ClientSampleId :
 SB-1125-21

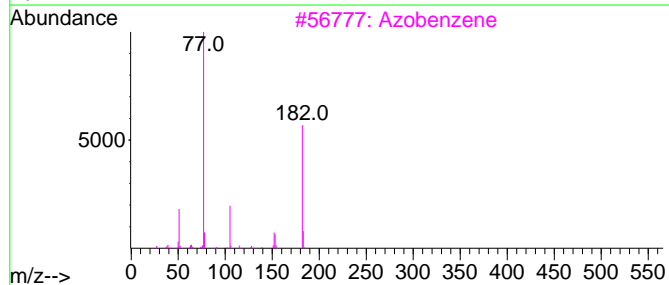
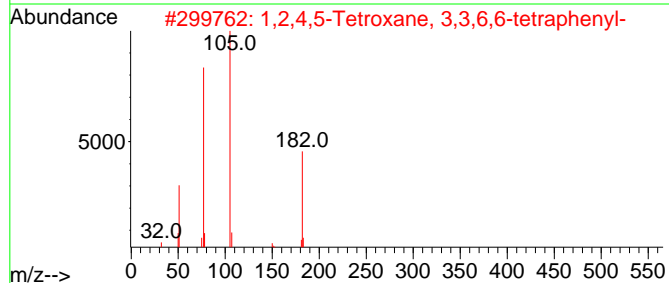
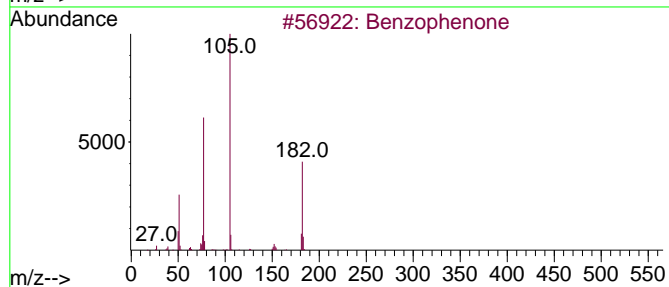
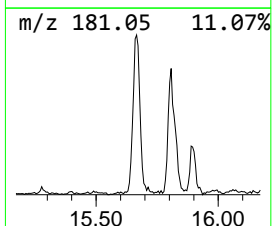
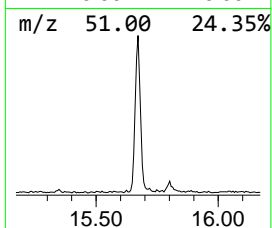
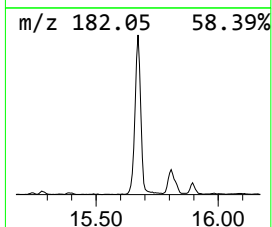
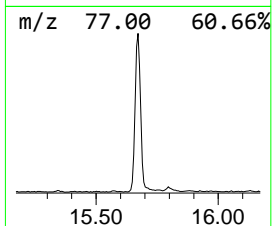
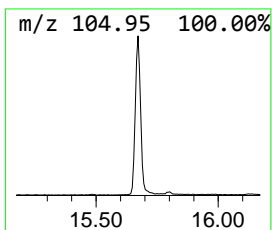
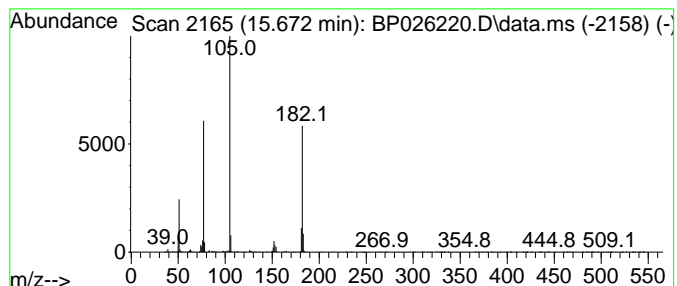
Quant Method : Z:\svoasrv\HPCHEM1\BNA_P\Methods\8270E-BP111825.M
 Quant Title : ASP BNA STANDARDS FOR 5 POINT CALIBRATION

TIC Library : C:\Database\NIST20.L
 TIC Integration Parameters: LSCINT.P

 Peak Number 2 Benzophenone Concentration Rank 4

R.T.	EstConc	Area	Relative to ISTD	R.T.
15.672	3.74 ng	622071	Acenaphthene-d10	14.289

Hit#	of	5	Tentative ID	MW	MolForm	CAS#	Qual
1			Benzophenone	182	C13H10O	000119-61-9	97
2			1,2,4,5-Tetroxane, 3,3,6,6-tetra...	396	C26H20O4	016204-36-7	64
3			Azobenzene	182	C12H10N2	000103-33-3	47
4			Methanone, phenyl-2-pyridinyl-	183	C12H9NO	000091-02-1	38
5			1,1'-Biphenyl, 3,4'-dimethyl-	182	C14H14	007383-90-6	30



Data Path : Z:\svoasrv\HPCHEM1\BNA_P\Data\BP120225\
 Data File : BP026220.D
 Acq On : 02 Dec 2025 23:24
 Operator : RC/JU
 Sample : Q3742-05
 Misc :
 ALS Vial : 14 Sample Multiplier: 1

Instrument :
 BNA_P
 ClientSampleId :
 SB-1125-21

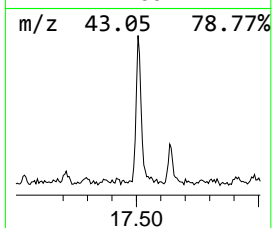
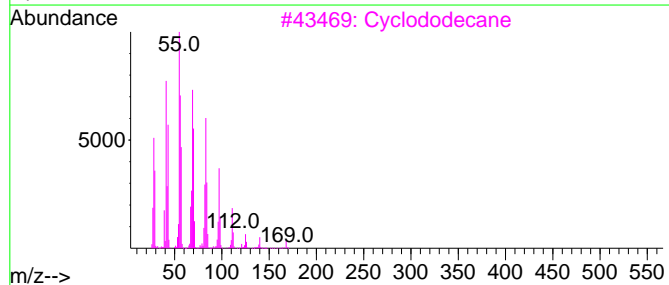
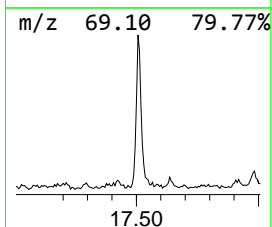
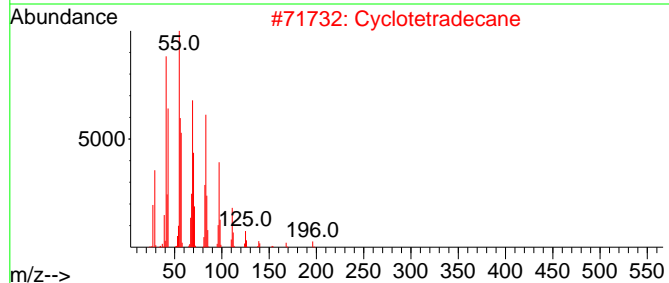
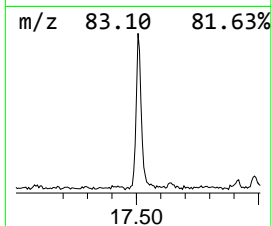
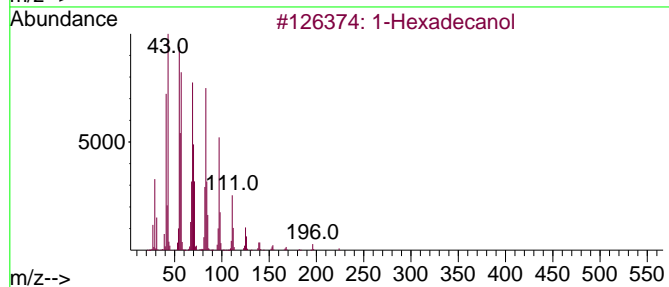
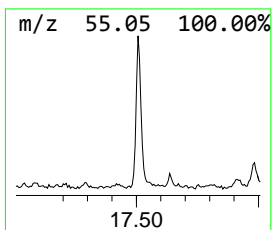
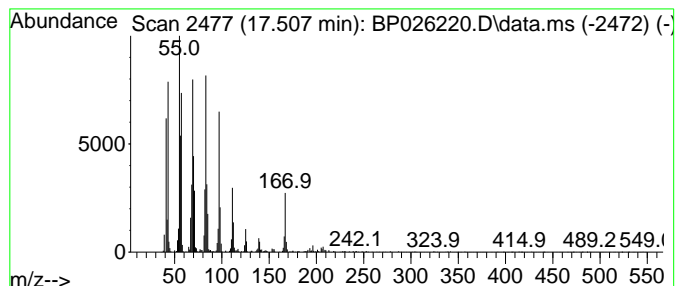
Quant Method : Z:\svoasrv\HPCHEM1\BNA_P\Methods\8270E-BP111825.M
 Quant Title : ASP BNA STANDARDS FOR 5 POINT CALIBRATION

TIC Library : C:\Database\NIST20.L
 TIC Integration Parameters: LSCINT.P

 Peak Number 3 1-Hexadecanol Concentration Rank 6

R.T.	EstConc	Area	Relative to ISTD	R.T.
17.507	2.14 ng	424969	Phenanthrene-d10	17.089

Hit#	of 5	Tentative ID	MW	MolForm	CAS#	Qual
1		1-Hexadecanol	242	C16H34O	036653-82-4	95
2		Cyclotetradecane	196	C14H28	000295-17-0	92
3		Cyclododecane	168	C12H24	000294-62-2	92
4		1-Tetradecanol	214	C14H30O	000112-72-1	91
5		n-Tridecan-1-ol	200	C13H28O	000112-70-9	91



Data Path : Z:\svoasrv\HPCHEM1\BNA_P\Data\BP120225\
 Data File : BP026220.D
 Acq On : 02 Dec 2025 23:24
 Operator : RC/JU
 Sample : Q3742-05
 Misc :
 ALS Vial : 14 Sample Multiplier: 1

Instrument :
 BNA_P
 ClientSampleId :
 SB-1125-21

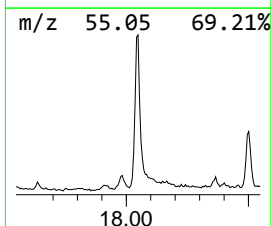
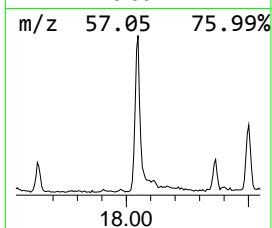
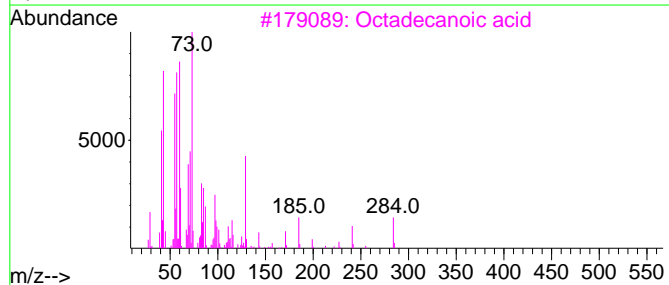
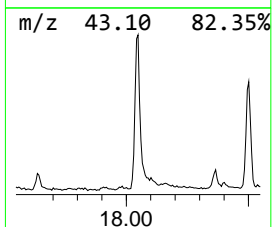
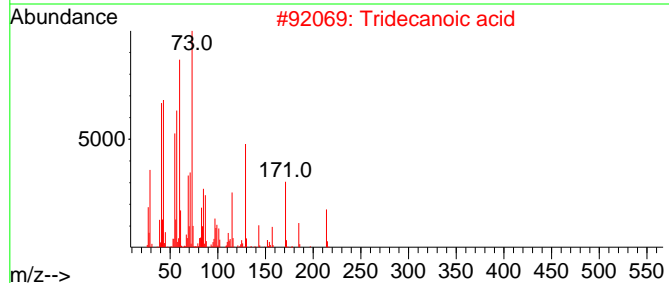
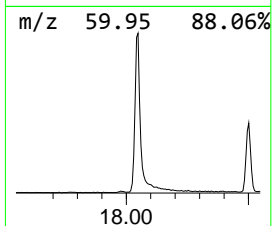
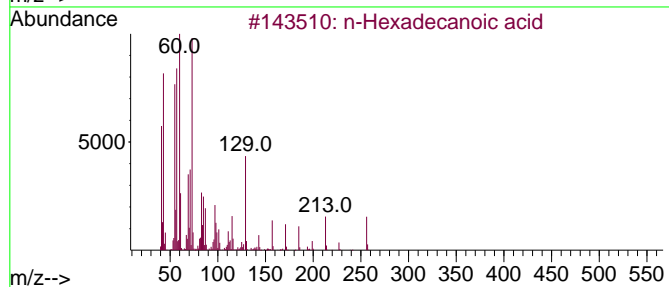
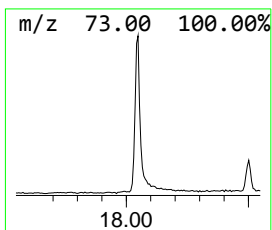
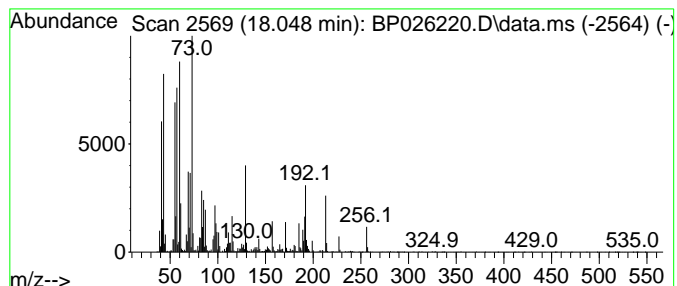
Quant Method : Z:\svoasrv\HPCHEM1\BNA_P\Methods\8270E-BP111825.M
 Quant Title : ASP BNA STANDARDS FOR 5 POINT CALIBRATION

TIC Library : C:\Database\NIST20.L
 TIC Integration Parameters: LSCINT.P

 Peak Number 4 n-Hexadecanoic acid Concentration Rank 2

R.T.	EstConc	Area	Relative to ISTD	R.T.
18.048	6.72 ng	1335400	Phenanthrene-d10	17.089

Hit#	of 5	Tentative ID	MW	MolForm	CAS#	Qual
1		n-Hexadecanoic acid	256	C16H32O2	000057-10-3	99
2		Tridecanoic acid	214	C13H26O2	000638-53-9	97
3		Octadecanoic acid	284	C18H36O2	000057-11-4	90
4		Pentadecanoic acid	242	C15H30O2	001002-84-2	90
5		Tetradecanoic acid	228	C14H28O2	000544-63-8	64



Data Path : Z:\svoasrv\HPCHEM1\BNA_P\Data\BP120225\
 Data File : BP026220.D
 Acq On : 02 Dec 2025 23:24
 Operator : RC/JU
 Sample : Q3742-05
 Misc :
 ALS Vial : 14 Sample Multiplier: 1

Instrument :
 BNA_P
 ClientSampleId :
 SB-1125-21

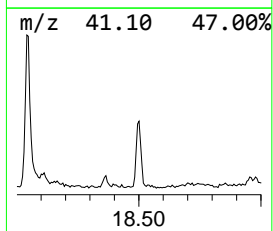
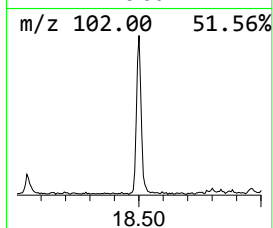
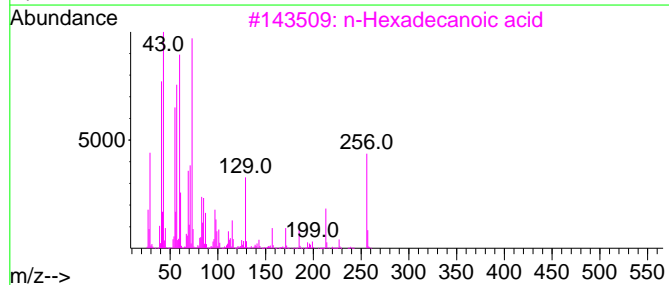
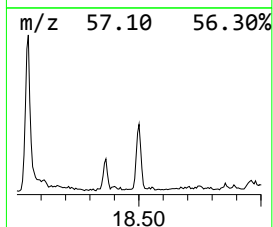
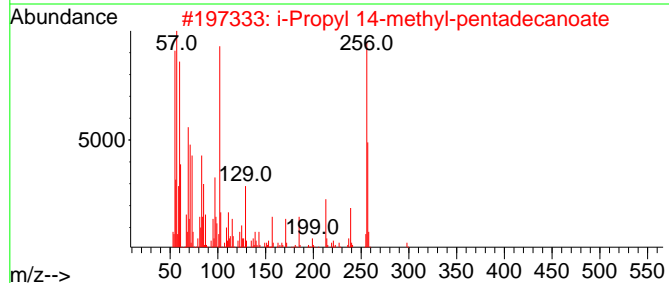
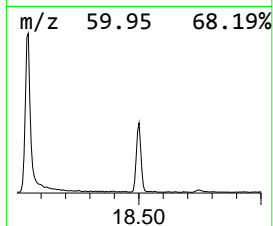
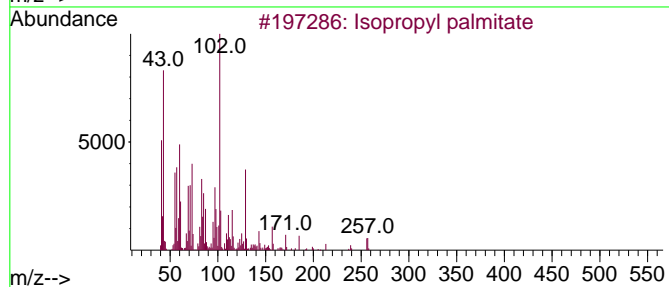
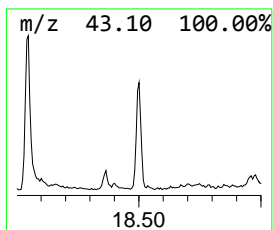
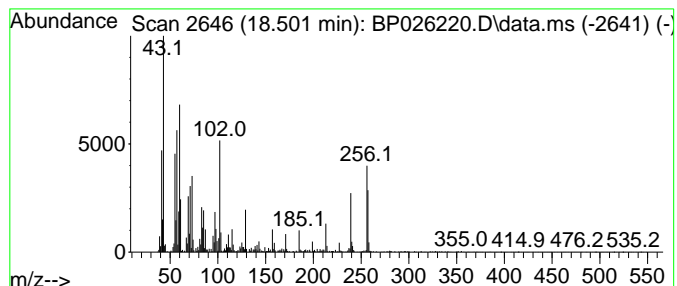
Quant Method : Z:\svoasrv\HPCHEM1\BNA_P\Methods\8270E-BP111825.M
 Quant Title : ASP BNA STANDARDS FOR 5 POINT CALIBRATION

TIC Library : C:\Database\NIST20.L
 TIC Integration Parameters: LSCINT.P

 Peak Number 5 Isopropyl palmitate Concentration Rank 5

R.T.	EstConc	Area	Relative to ISTD	R.T.
18.501	2.91 ng	577444	Phenanthrene-d10	17.089

Hit#	of	5	Tentative ID	MW	MolForm	CAS#	Qual
1			Isopropyl palmitate	298	C19H38O2	000142-91-6	90
2			i-Propyl 14-methyl-pentadecanoate	298	C19H38O2	1000336-62-4	64
3			n-Hexadecanoic acid	256	C16H32O2	000057-10-3	41
4			Dodecanoic acid, 1-methylethyl e...	242	C15H30O2	010233-13-3	38
5			Nonanoic acid, 1-methylethyl ester	200	C12H24O2	028267-32-5	38



Data Path : Z:\svoasrv\HPCHEM1\BNA_P\Data\BP120225\
 Data File : BP026220.D
 Acq On : 02 Dec 2025 23:24
 Operator : RC/JU
 Sample : Q3742-05
 Misc :
 ALS Vial : 14 Sample Multiplier: 1

Instrument :
 BNA_P
 ClientSampleId :
 SB-1125-21

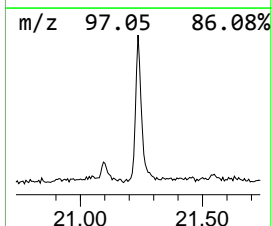
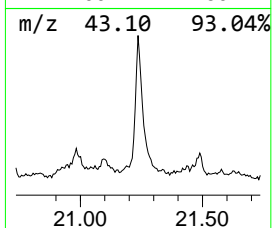
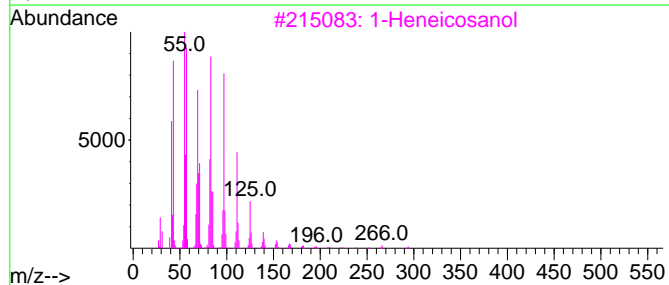
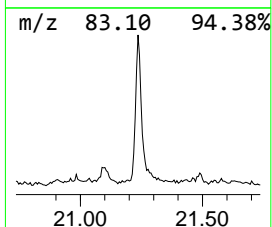
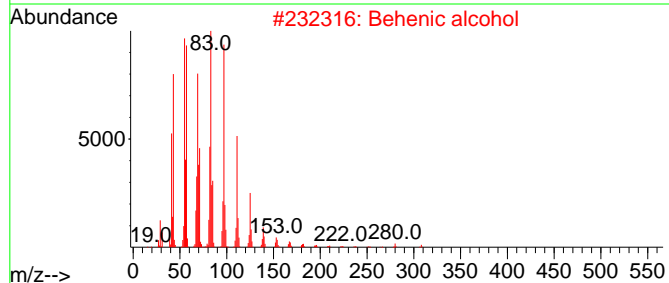
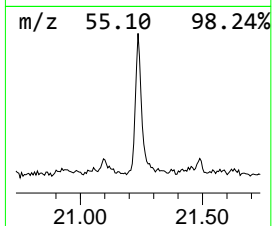
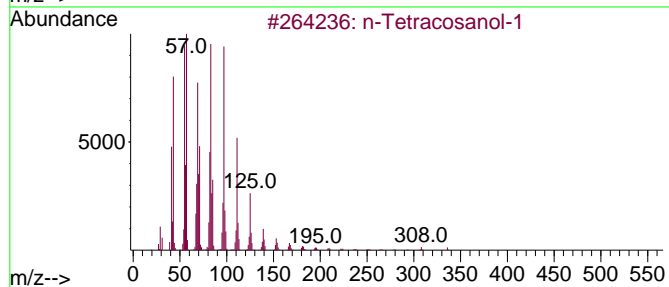
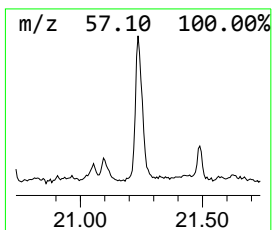
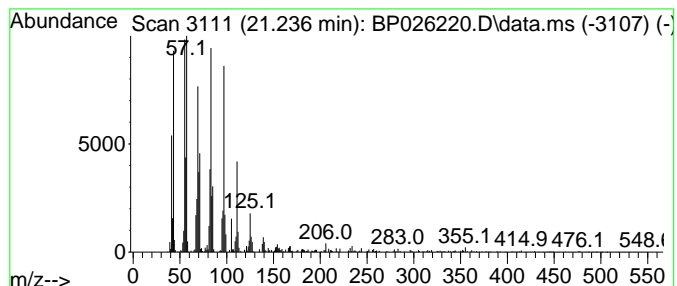
Quant Method : Z:\svoasrv\HPCHEM1\BNA_P\Methods\8270E-BP111825.M
 Quant Title : ASP BNA STANDARDS FOR 5 POINT CALIBRATION

TIC Library : C:\Database\NIST20.L
 TIC Integration Parameters: LSCINT.P

 Peak Number 6 n-Tetracosanol-1 Concentration Rank 3

R.T.	EstConc	Area	Relative to ISTD	R.T.
21.236	5.97 ng	1141020	Chrysene-d12	21.542

Hit#	of 5	Tentative ID	MW	MolForm	CAS#	Qual
1		n-Tetracosanol-1	354	C24H50O	000506-51-4	95
2		Behenic alcohol	326	C22H46O	000661-19-8	95
3		1-Heneicosanol	312	C21H44O	015594-90-8	94
4		1-Heptacosanol	396	C27H56O	002004-39-9	94
5		2-Chloropropionic acid, hexadec...	332	C19H37ClO2	086711-81-1	93



Data Path : Z:\svoasrv\HPCHEM1\BNA_P\Data\BP120225\
 Data File : BP026220.D
 Acq On : 02 Dec 2025 23:24
 Operator : RC/JU
 Sample : Q3742-05
 Misc :
 ALS Vial : 14 Sample Multiplier: 1

Instrument :
 BNA_P
 ClientSampleId :
 SB-1125-21

Quant Method : Z:\svoasrv\HPCHEM1\BNA_P\Methods\8270E-BP111825.M
 Quant Title : ASP BNA STANDARDS FOR 5 POINT CALIBRATION

TIC Library : C:\Database\NIST20.L
 TIC Integration Parameters: LSCINT.P

TIC Top Hit name	RT	EstConc	Units	Response	--Internal Standard--			
					#	RT	Resp	Conc
Benzophenone	15.672	3.7	ng	622071	3	14.289	3323260	20.0
1-Hexadecanol	17.507	2.1	ng	424969	4	17.089	3975210	20.0
n-Hexadecanoic ...	18.048	6.7	ng	1335400	4	17.089	3975210	20.0
Isopropyl palmi...	18.501	2.9	ng	577444	4	17.089	3975210	20.0
n-Tetracosanol-1	21.236	6.0	ng	1141020	5	21.542	3823360	20.0