

Data Path : Z:\svoasrv\HPCHEM1\BNA\_P\Data\BP120225\  
 Data File : BP026221.D  
 Acq On : 03 Dec 2025 00:06  
 Operator : RC/JU  
 Sample : Q3742-06  
 Misc :  
 ALS Vial : 15 Sample Multiplier: 1

Instrument :  
 BNA\_P  
 ClientSampleId :  
 SB-1125-13

Integration Parameters: rteint.p  
 Integrator: RTE  
 Smoothing : ON  
 Sampling : 1  
 Start Thrs: 0.2  
 Stop Thrs : 0  
 Filtering: 5  
 Min Area: 3 % of largest Peak  
 Max Peaks: 100  
 Peak Location: TOP

If leading or trailing edge < 100 prefer < Baseline drop else tangent >  
 Peak separation: 5

Method : Z:\svoasrv\HPCHEM1\BNA\_P\Methods\8270E-BP111825.M  
 Title : ASP BNA STANDARDS FOR 5 POINT CALIBRATION

Signal : TIC: BP026221.D\data.ms

peak #	R.T. min	first scan	max scan	last scan	PK TY	peak height	corr. area	corr. % max.	% of total
1	3.449	79	87	98	rVB2	142651	271427	3.02%	0.454%
2	3.925	163	168	177	rVB	65606	102497	1.14%	0.171%
3	4.831	316	322	326	rBV	690235	976650	10.85%	1.633%
4	5.290	393	400	407	rBV	2350308	3523388	39.16%	5.891%
5	5.349	407	410	417	rVB	57951	97057	1.08%	0.162%
6	5.714	467	472	481	rVB3	96380	185634	2.06%	0.310%
7	6.190	545	553	560	rBV4	43118	97934	1.09%	0.164%
8	6.843	655	664	672	rBV	2395920	3835310	42.62%	6.413%
9	7.313	737	744	750	rBV2	75526	156588	1.74%	0.262%
10	7.660	796	803	814	rBV	900936	1466588	16.30%	2.452%
11	8.796	978	996	1007	rBV	1571581	2638410	29.32%	4.412%
12	8.884	1007	1011	1020	rVB	83031	146446	1.63%	0.245%
13	10.425	1264	1273	1278	rBV	1135637	2027100	22.53%	3.389%
14	10.472	1278	1281	1286	rVV	115215	192103	2.13%	0.321%
15	11.466	1444	1450	1458	rBV	69015	127339	1.42%	0.213%
16	11.872	1512	1519	1526	rBV	82442	143358	1.59%	0.240%
17	12.090	1545	1556	1566	rBV	202835	352154	3.91%	0.589%
18	12.313	1588	1594	1603	rVB	222672	342024	3.80%	0.572%
19	12.907	1688	1695	1702	rBV	4194206	5978364	66.44%	9.996%
20	13.131	1724	1733	1738	rBV2	96887	185331	2.06%	0.310%
21	13.448	1781	1787	1789	rBV	59805	97644	1.09%	0.163%
22	13.607	1810	1814	1819	rVV	196715	273552	3.04%	0.457%
23	13.660	1819	1823	1829	rVB	144355	209638	2.33%	0.351%
24	13.801	1842	1847	1851	rBV2	78318	100652	1.12%	0.168%
25	13.854	1851	1856	1859	rBV	116483	175790	1.95%	0.294%
26	14.219	1913	1918	1923	rBV	106595	138226	1.54%	0.231%
27	14.295	1923	1931	1938	rBV	1567958	2676248	29.74%	4.475%
28	14.701	1995	2000	2008	rBV2	93321	170734	1.90%	0.285%
29	14.784	2009	2014	2018	rVB	64256	99272	1.10%	0.166%
30	14.854	2021	2026	2033	rBV5	49395	102103	1.13%	0.171%
31	14.931	2034	2039	2043	rVV	74871	131867	1.47%	0.220%
32	14.978	2043	2047	2052	rVB	71663	98962	1.10%	0.165%
33	15.107	2061	2069	2072	rBV3	136052	293486	3.26%	0.491%
34	15.137	2072	2074	2078	rVV2	139378	224953	2.50%	0.376%
35	15.184	2079	2082	2092	rVB2	188128	324295	3.60%	0.542%
36	15.354	2105	2111	2116	rVB2	119437	188857	2.10%	0.316%

Data Path : Z:\svoasrv\HPCHEM1\BNA\_P\Data\BP120225\  
 Data File : BP026221.D  
 Acq On : 03 Dec 2025 00:06  
 Operator : RC/JU  
 Sample : Q3742-06  
 Misc :  
 ALS Vial : 15 Sample Multiplier: 1

Instrument :  
 BNA\_P  
 ClientSampleId :  
 SB-1125-13

Integration Parameters: rteint.p  
 Integrator: RTE  
 Smoothing : ON  
 Sampling : 1  
 Start Thrs: 0.2  
 Stop Thrs : 0  
 Filtering: 5  
 Min Area: 3 % of largest Peak  
 Max Peaks: 100  
 Peak Location: TOP

If leading or trailing edge < 100 prefer < Baseline drop else tangent >  
 Peak separation: 5

Method : Z:\svoasrv\HPCHEM1\BNA\_P\Methods\8270E-BP111825.M  
 Title : ASP BNA STANDARDS FOR 5 POINT CALIBRATION

37	15.601	2146	2153	2157	rBV3	57399	115972	1.29%	0.194%
38	15.678	2158	2166	2173	rVB2	377957	669682	7.44%	1.120%
39	15.807	2181	2188	2197	rBV	2417112	3948631	43.88%	6.602%
40	15.901	2200	2204	2210	rVB2	57395	117503	1.31%	0.196%
41	16.066	2227	2232	2234	rBV3	120207	188811	2.10%	0.316%
42	16.095	2234	2237	2242	rVB	192162	265097	2.95%	0.443%
43	16.625	2323	2327	2331	rBV2	65929	123120	1.37%	0.206%
44	16.831	2358	2362	2367	rVV4	64923	133405	1.48%	0.223%
45	16.878	2367	2370	2374	rVV	145998	191380	2.13%	0.320%
46	17.095	2401	2407	2411	rBV	1928405	3020075	33.56%	5.050%
47	17.136	2411	2414	2419	rVB	254319	370905	4.12%	0.620%
48	17.425	2459	2463	2469	rVB5	48359	90677	1.01%	0.152%
49	17.519	2474	2479	2483	rBV2	206556	284570	3.16%	0.476%
50	17.642	2496	2500	2505	rVB	109729	142498	1.58%	0.238%
51	18.001	2555	2561	2564	rBV2	81045	168475	1.87%	0.282%
52	18.048	2564	2569	2578	rVV3	888659	1356730	15.08%	2.268%
53	18.189	2589	2593	2597	rBV	136341	198124	2.20%	0.331%
54	18.236	2598	2601	2610	rVB	126511	187686	2.09%	0.314%
55	18.366	2619	2623	2627	rBV	139839	158458	1.76%	0.265%
56	18.501	2641	2646	2654	rBV2	304669	516523	5.74%	0.864%
57	18.966	2721	2725	2729	rVB	133048	181143	2.01%	0.303%
58	19.019	2730	2734	2738	rBV	176402	236139	2.62%	0.395%
59	19.060	2738	2741	2745	rVV2	67406	90305	1.00%	0.151%
60	19.230	2767	2770	2776	rBV2	118709	202710	2.25%	0.339%
61	19.383	2792	2796	2800	rBV	133052	182878	2.03%	0.306%
62	19.630	2835	2838	2844	rVB2	159891	189825	2.11%	0.317%
63	19.825	2866	2871	2884	rVB	6370578	8997986	100.00%	15.045%
64	20.189	2930	2933	2938	rBV2	134622	173048	1.92%	0.289%
65	20.713	3019	3022	3026	rBV	143474	158958	1.77%	0.266%
66	21.219	3104	3108	3122	rVB4	516682	997369	11.08%	1.668%
67	21.536	3156	3162	3182	rVB2	2254078	4019134	44.67%	6.720%
68	24.842	3715	3724	3737	rVB2	1458985	3977679	44.21%	6.651%

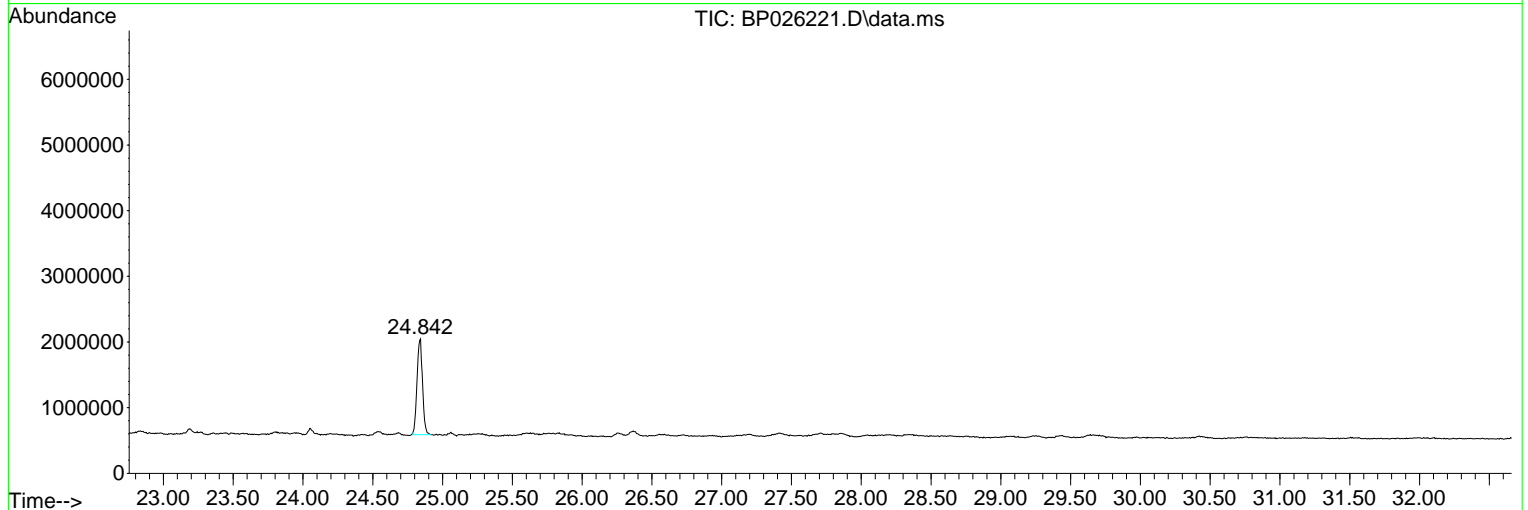
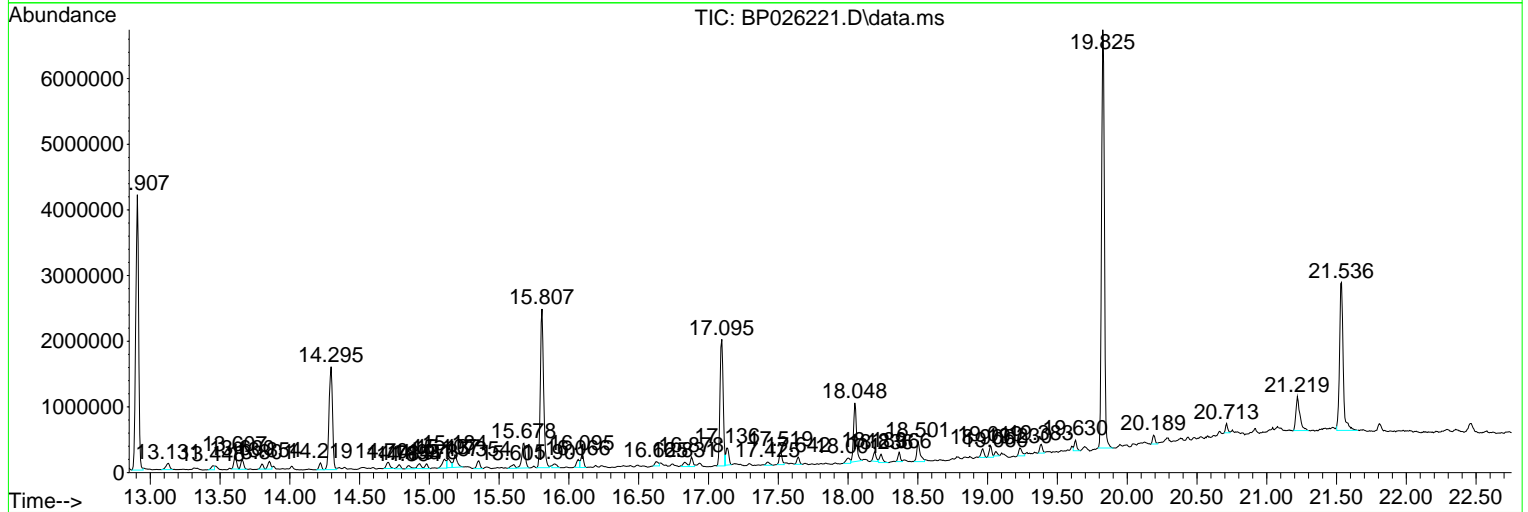
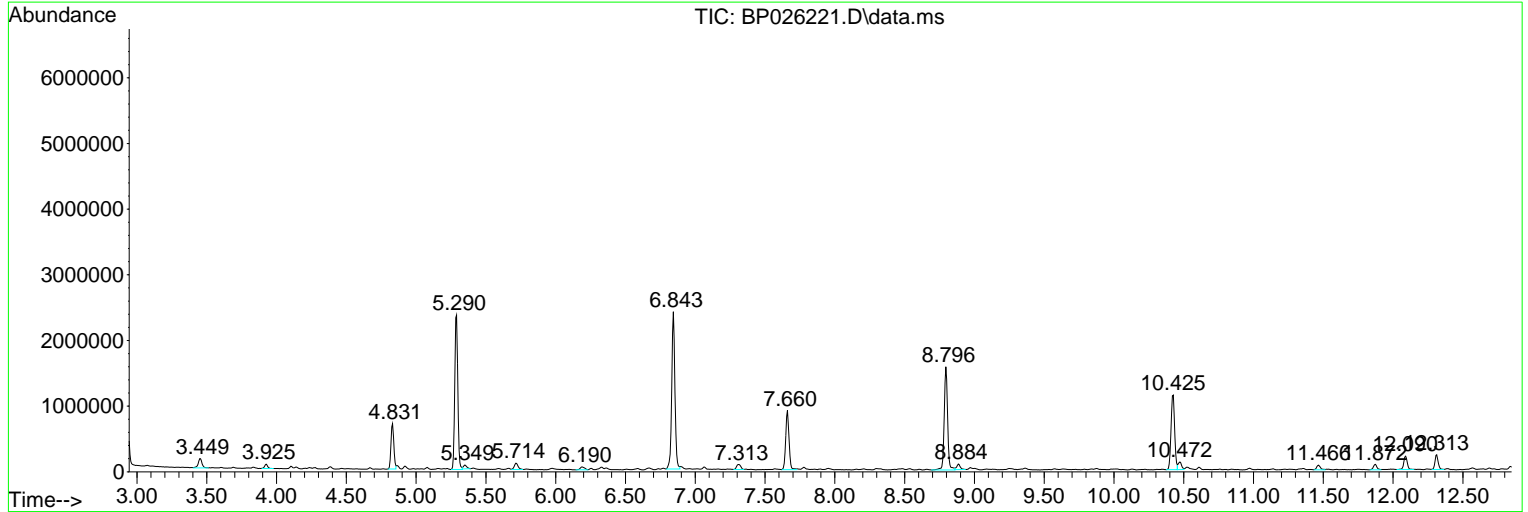
Sum of corrected areas: 59807477

Data Path : Z:\svoasrv\HPCHEM1\BNA\_P\Data\BP120225\  
 Data File : BP026221.D  
 Acq On : 03 Dec 2025 00:06  
 Operator : RC/JU  
 Sample : Q3742-06  
 Misc :  
 ALS Vial : 15 Sample Multiplier: 1

Instrument :  
 BNA\_P  
 ClientSampleId :  
 SB-1125-13

Quant Method : Z:\svoasrv\HPCHEM1\BNA\_P\Methods\8270E-BP111825.M  
 Quant Title : ASP BNA STANDARDS FOR 5 POINT CALIBRATION

TIC Library : C:\Database\NIST20.L  
 TIC Integration Parameters: LSCINT.P



Data Path : Z:\svoasrv\HPCHEM1\BNA\_P\Data\BP120225\  
 Data File : BP026221.D  
 Acq On : 03 Dec 2025 00:06  
 Operator : RC/JU  
 Sample : Q3742-06  
 Misc :  
 ALS Vial : 15 Sample Multiplier: 1

Instrument :  
 BNA\_P  
 ClientSampleId :  
 SB-1125-13

Quant Method : Z:\svoasrv\HPCHEM1\BNA\_P\Methods\8270E-BP111825.M  
 Quant Title : ASP BNA STANDARDS FOR 5 POINT CALIBRATION

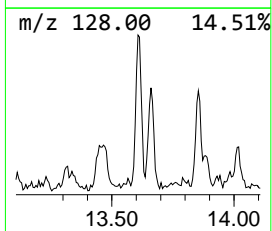
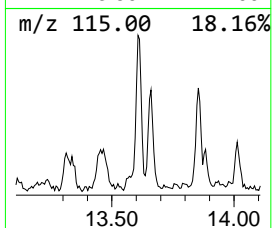
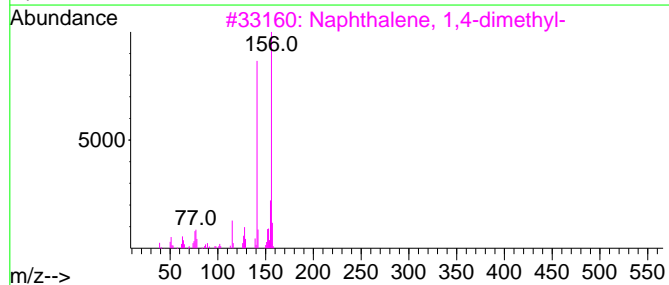
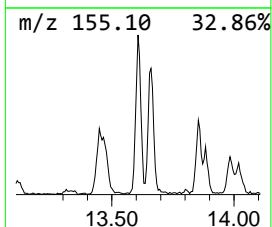
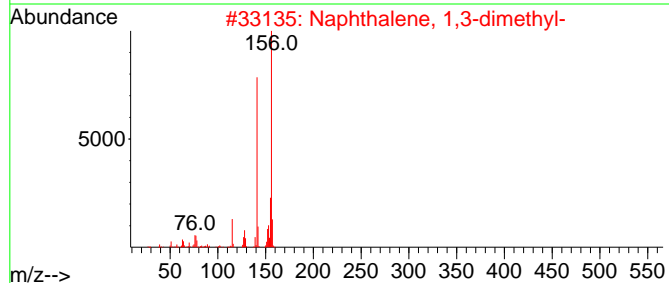
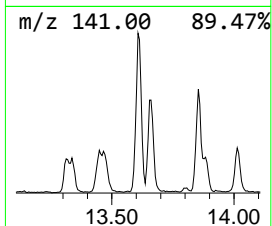
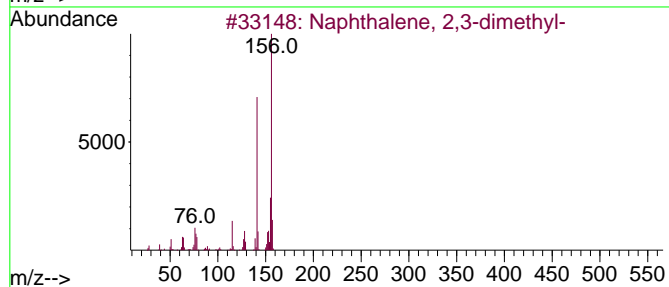
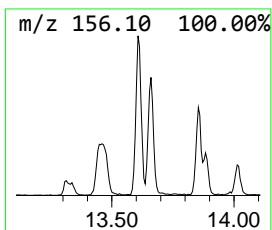
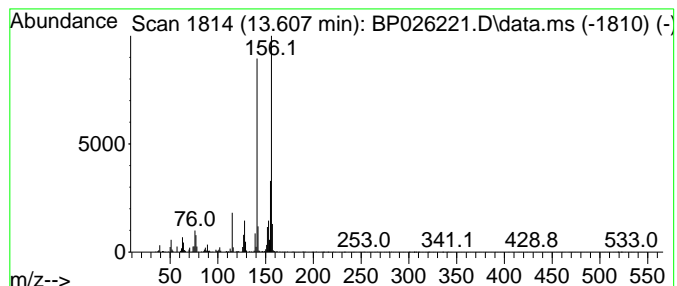
TIC Library : C:\Database\NIST20.L  
 TIC Integration Parameters: LSCINT.P

\*\*\*\*\*  
 Peak Number 5 Naphthalene, 2,3-dimethyl- Concentration Rank 11

R.T.	EstConc	Area	Relative to ISTD	R.T.
13.607	2.04 ng	273552	Acenaphthene-d10	14.295

Hit#	of	5	Tentative ID	MW	MolForm	CAS#	Qual
1			Naphthalene, 2,3-dimethyl-	156	C12H12	000581-40-8	97
2			Naphthalene, 1,3-dimethyl-	156	C12H12	000575-41-7	97
3			Naphthalene, 1,4-dimethyl-	156	C12H12	000571-58-4	96
4			Naphthalene, 1,2-dimethyl-	156	C12H12	000573-98-8	96
5			Naphthalene, 1,6-dimethyl-	156	C12H12	000575-43-9	96



Data Path : Z:\svoasrv\HPCHEM1\BNA\_P\Data\BP120225\  
 Data File : BP026221.D  
 Acq On : 03 Dec 2025 00:06  
 Operator : RC/JU  
 Sample : Q3742-06  
 Misc :  
 ALS Vial : 15 Sample Multiplier: 1

Instrument :  
 BNA\_P  
 ClientSampleId :  
 SB-1125-13

Quant Method : Z:\svoasrv\HPCHEM1\BNA\_P\Methods\8270E-BP111825.M  
 Quant Title : ASP BNA STANDARDS FOR 5 POINT CALIBRATION

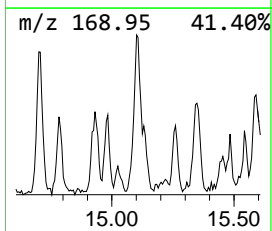
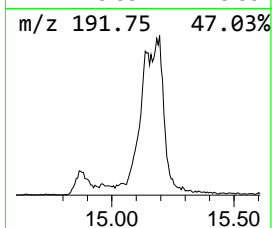
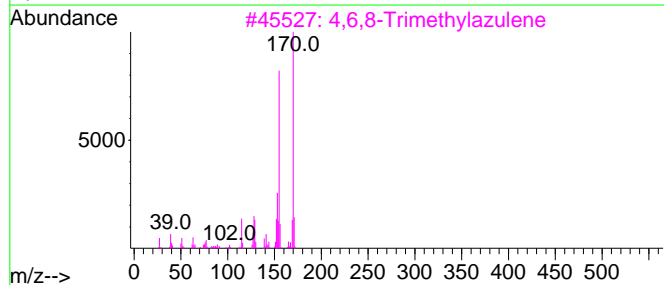
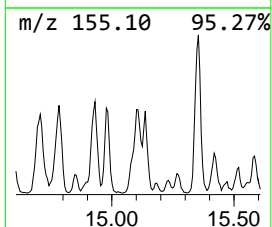
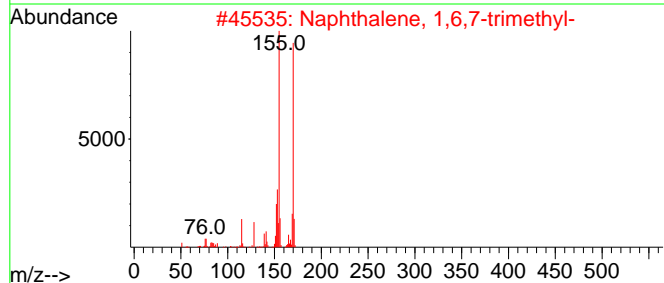
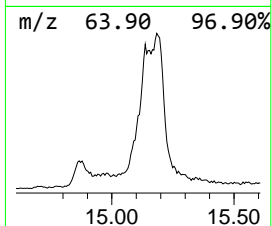
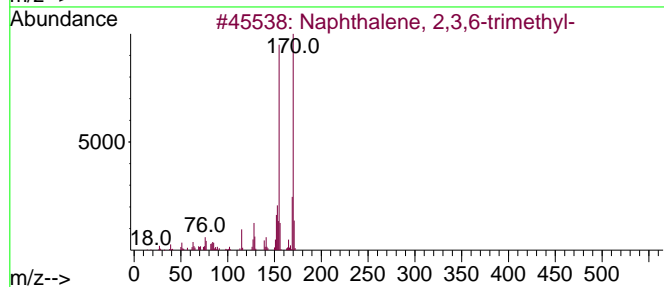
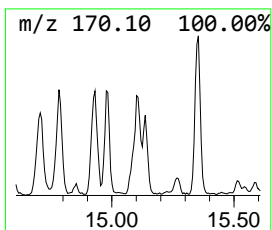
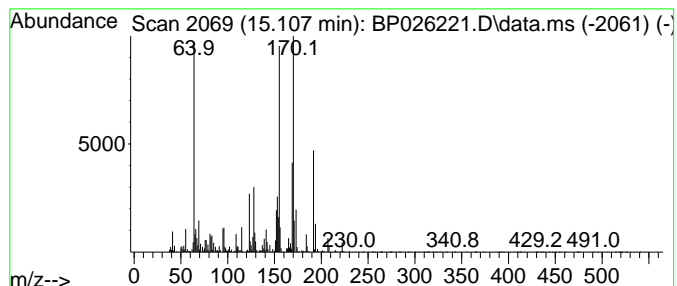
TIC Library : C:\Database\NIST20.L  
 TIC Integration Parameters: LSCINT.P

\*\*\*\*\*  
 Peak Number 6 Naphthalene, 2,3,6-trimethyl- Concentration Rank 9

R.T.	EstConc	Area	Relative to ISTD	R.T.
15.107	2.19 ng	293486	Acenaphthene-d10	14.295

Hit#	of 5	Tentative ID	MW	MolForm	CAS#	Qual
1		Naphthalene, 2,3,6-trimethyl-	170	C13H14	000829-26-5	92
2		Naphthalene, 1,6,7-trimethyl-	170	C13H14	002245-38-7	78
3		4,6,8-Trimethylazulene	170	C13H14	000941-81-1	51
4		Naphthalene, 1,4,6-trimethyl-	170	C13H14	002131-42-2	51
5		3-(2-Methyl-propenyl)-1H-indene	170	C13H14	1000187-78-5	35



Data Path : Z:\svoasrv\HPCHEM1\BNA\_P\Data\BP120225\  
 Data File : BP026221.D  
 Acq On : 03 Dec 2025 00:06  
 Operator : RC/JU  
 Sample : Q3742-06  
 Misc :  
 ALS Vial : 15 Sample Multiplier: 1

Instrument :  
 BNA\_P  
 ClientSampleId :  
 SB-1125-13

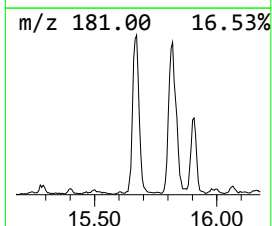
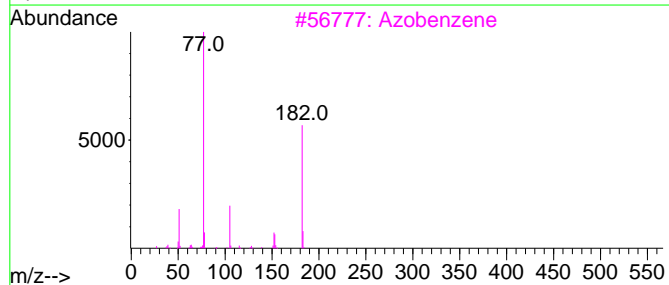
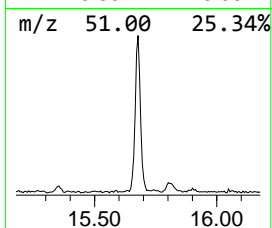
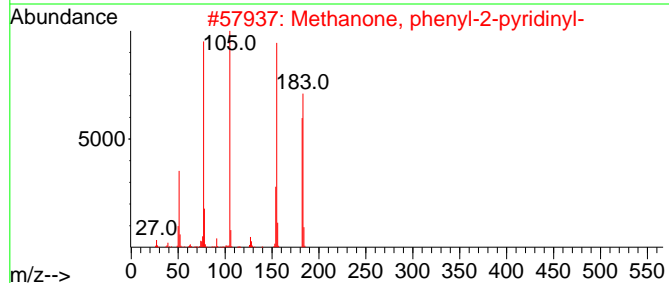
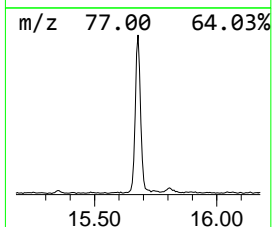
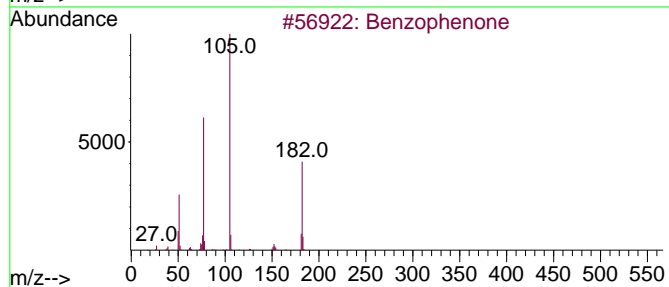
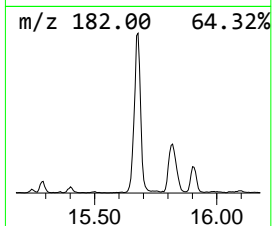
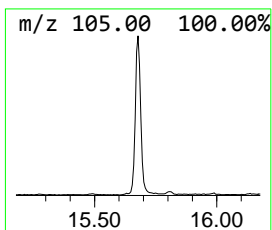
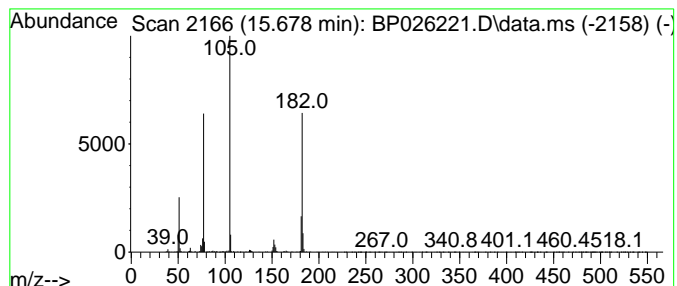
Quant Method : Z:\svoasrv\HPCHEM1\BNA\_P\Methods\8270E-BP111825.M  
 Quant Title : ASP BNA STANDARDS FOR 5 POINT CALIBRATION

TIC Library : C:\Database\NIST20.L  
 TIC Integration Parameters: LSCINT.P

\*\*\*\*\*  
 Peak Number 8 Benzophenone Concentration Rank 3

R.T.	EstConc	Area	Relative to ISTD	R.T.
15.678	5.00 ng	669682	Acenaphthene-d10	14.295

Hit#	of	5	Tentative ID	MW	MolForm	CAS#	Qual
1			Benzophenone	182	C13H10O	000119-61-9	95
2			Methanone, phenyl-2-pyridinyl-	183	C12H9NO	000091-02-1	50
3			Azobenzene	182	C12H10N2	000103-33-3	43
4			Benzenamine, N-(3-pyridinylmethy...	182	C12H10N2	029722-97-2	42
5			9H-Pyrido[3,4-b]indole, 1-methyl-	182	C12H10N2	000486-84-0	38



Data Path : Z:\svoasrv\HPCHEM1\BNA\_P\Data\BP120225\  
 Data File : BP026221.D  
 Acq On : 03 Dec 2025 00:06  
 Operator : RC/JU  
 Sample : Q3742-06  
 Misc :  
 ALS Vial : 15 Sample Multiplier: 1

Instrument :  
 BNA\_P  
 ClientSampleId :  
 SB-1125-13

Quant Method : Z:\svoasrv\HPCHEM1\BNA\_P\Methods\8270E-BP111825.M  
 Quant Title : ASP BNA STANDARDS FOR 5 POINT CALIBRATION

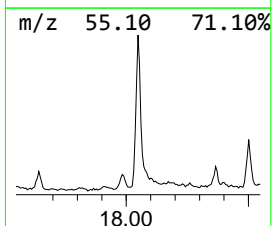
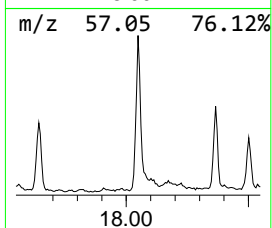
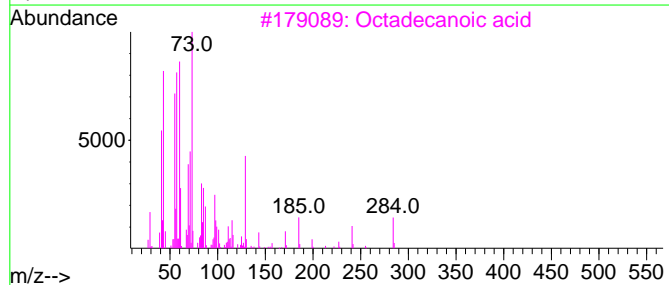
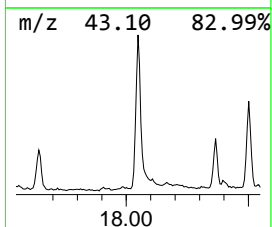
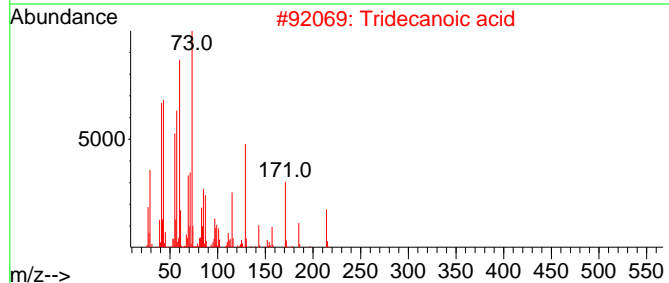
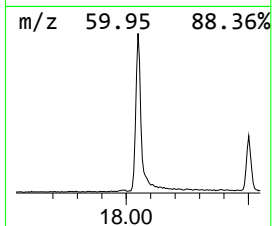
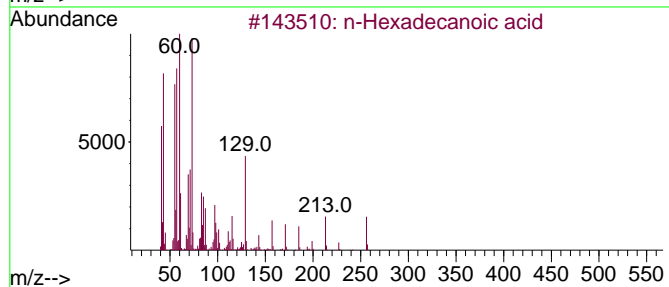
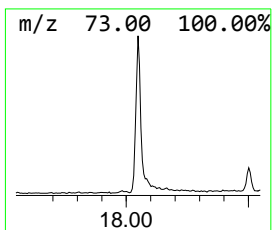
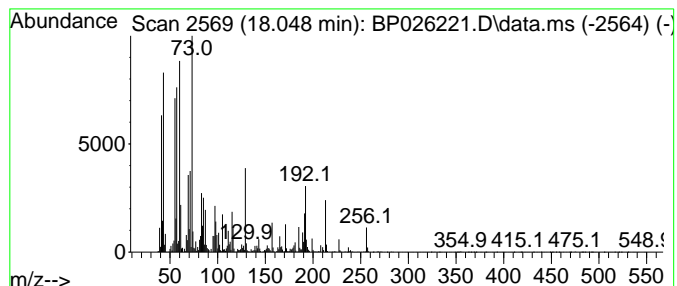
TIC Library : C:\Database\NIST20.L  
 TIC Integration Parameters: LSCINT.P

\*\*\*\*\*  
 Peak Number 9 n-Hexadecanoic acid Concentration Rank 2

R.T.	EstConc	Area	Relative to ISTD	R.T.
18.048	8.98 ng	1356730	Phenanthrene-d10	17.095

Hit#	of 5	Tentative ID	MW	MolForm	CAS#	Qual
1		n-Hexadecanoic acid	256	C16H32O2	000057-10-3	99
2		Tridecanoic acid	214	C13H26O2	000638-53-9	95
3		Octadecanoic acid	284	C18H36O2	000057-11-4	90
4		Pentadecanoic acid	242	C15H30O2	001002-84-2	90
5		Tetradecanoic acid	228	C14H28O2	000544-63-8	64



Data Path : Z:\svoasrv\HPCHEM1\BNA\_P\Data\BP120225\  
 Data File : BP026221.D  
 Acq On : 03 Dec 2025 00:06  
 Operator : RC/JU  
 Sample : Q3742-06  
 Misc :  
 ALS Vial : 15 Sample Multiplier: 1

Instrument :  
 BNA\_P  
 ClientSampleId :  
 SB-1125-13

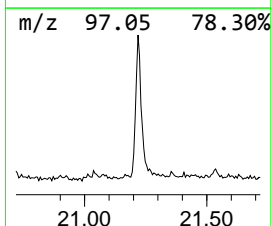
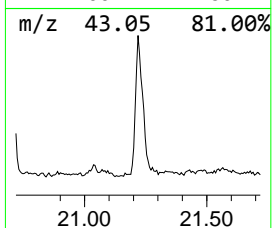
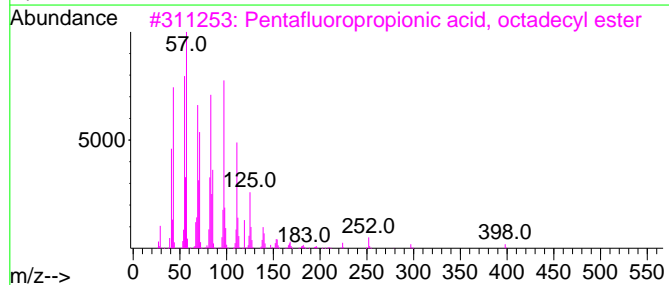
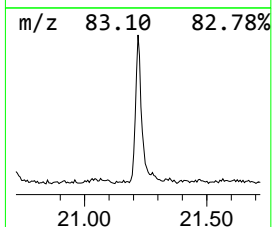
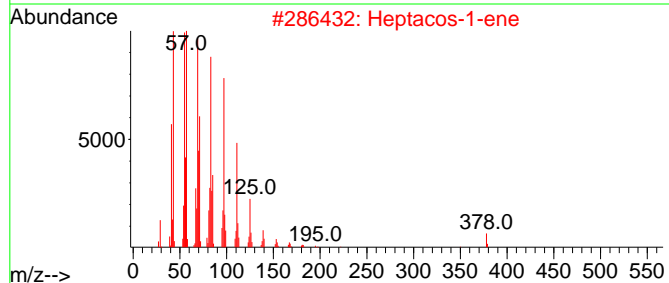
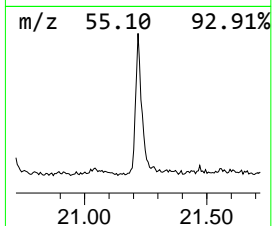
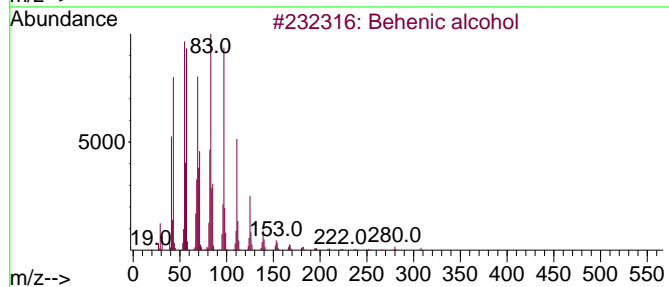
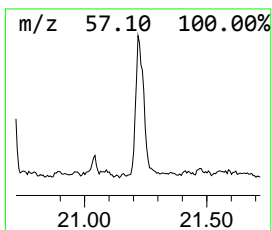
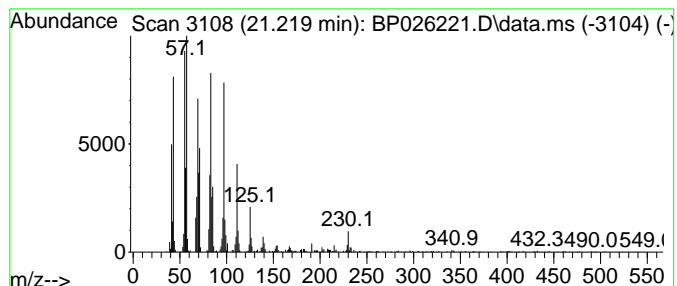
Quant Method : Z:\svoasrv\HPCHEM1\BNA\_P\Methods\8270E-BP111825.M  
 Quant Title : ASP BNA STANDARDS FOR 5 POINT CALIBRATION

TIC Library : C:\Database\NIST20.L  
 TIC Integration Parameters: LSCINT.P

\*\*\*\*\*  
 Peak Number 11 Behenic alcohol Concentration Rank 4

R.T.	EstConc	Area	Relative to ISTD	R.T.
21.219	4.96 ng	997369	Chrysene-d12	21.530

Hit#	of 5	Tentative ID	MW	MolForm	CAS#	Qual
1		Behenic alcohol	326	C22H46O	000661-19-8	95
2		Heptacos-1-ene	378	C27H54	015306-27-1	94
3		Pentafluoropropionic acid, octadecyl ester	416	C21H37F5O2	959261-25-7	94
4		Pentacos-1-ene	350	C25H50	016980-85-1	94
5		1-Hexacosene	364	C26H52	018835-33-1	94





Data Path : Z:\svoasrv\HPCHEM1\BNA\_P\Data\BP120225\  
Data File : BP026221.D  
Acq On : 03 Dec 2025 00:06  
Operator : RC/JU  
Sample : Q3742-06  
Misc :  
ALS Vial : 15 Sample Multiplier: 1

Instrument :  
BNA\_P  
ClientSampleId :  
SB-1125-13

Quant Method : Z:\svoasrv\HPCHEM1\BNA\_P\Methods\8270E-BP111825.M  
Quant Title : ASP BNA STANDARDS FOR 5 POINT CALIBRATION

TIC Library : C:\Database\NIST20.L  
TIC Integration Parameters: LSCINT.P

TIC Top Hit name	RT	EstConc	Units	Response	--Internal Standard--			
					#	RT	Resp	Conc
Naphthalene, 2,...	13.607	2.0	ng	273552	3	14.295	2676250	20.0
Naphthalene, 2,...	15.107	2.2	ng	293486	3	14.295	2676250	20.0
Benzophenone	15.678	5.0	ng	669682	3	14.295	2676250	20.0
n-Hexadecanoic ...	18.048	9.0	ng	1356730	4	17.095	3020080	20.0
Behenic alcohol	21.219	5.0	ng	997369	5	21.530	4019130	20.0