

Data Path : Z:\pestpcbsrv\HPCHEM1\ECD_D\Data\PD010219\
 Data File : PD050906.D
 Signal(s) : Signal #1: ECD1A.CH Signal #2: ECD2B.CH
 Acq On : 02 Jan 2019 15:54
 Operator : AJ\SJ
 Sample : PIBLK28
 Misc :
 ALS Vial : 2 Sample Multiplier: 1

Instrument :
 ECD_D
 ClientSampleID :
 PIBLK28

Integration File signal 1: autoint1.e
 Integration File signal 2: autoint2.e
 Quant Time: Jan 04 05:42:45 2019
 Quant Method : Z:\pestpcbsrv\HPCHEM1\ECD_D\Method\PD122718CLP.M
 Quant Title : GC Extractables
 QLast Update : Thu Jan 03 08:35:31 2019
 Response via : Initial Calibration
 Integrator: ChemStation 6890 Scale Mode: Large solvent peaks clipped

Volume Inj. : 1 µl
 Signal #1 Phase : ZB-MR2 Signal #2 Phase: ZB-MR1
 Signal #1 Info : 30M x 0.32mm x 0.2 Signal #2 Info : 30M x 0.32mm x 0.50µm

Compound	RT#1	RT#2	Resp#1	Resp#2	ng/ml	ng/ml

System Monitoring Compounds						
1) SA Tetrachlo...	3.227	4.046	29520486	521.3E6	19.135	19.335
27) SA Decachlor...	7.830	9.156	38396351	644.7E6	34.079	34.669
Target Compounds						
6) B beta-BHC	0.000	4.940f	0	107.4E6	N.D.	6.404

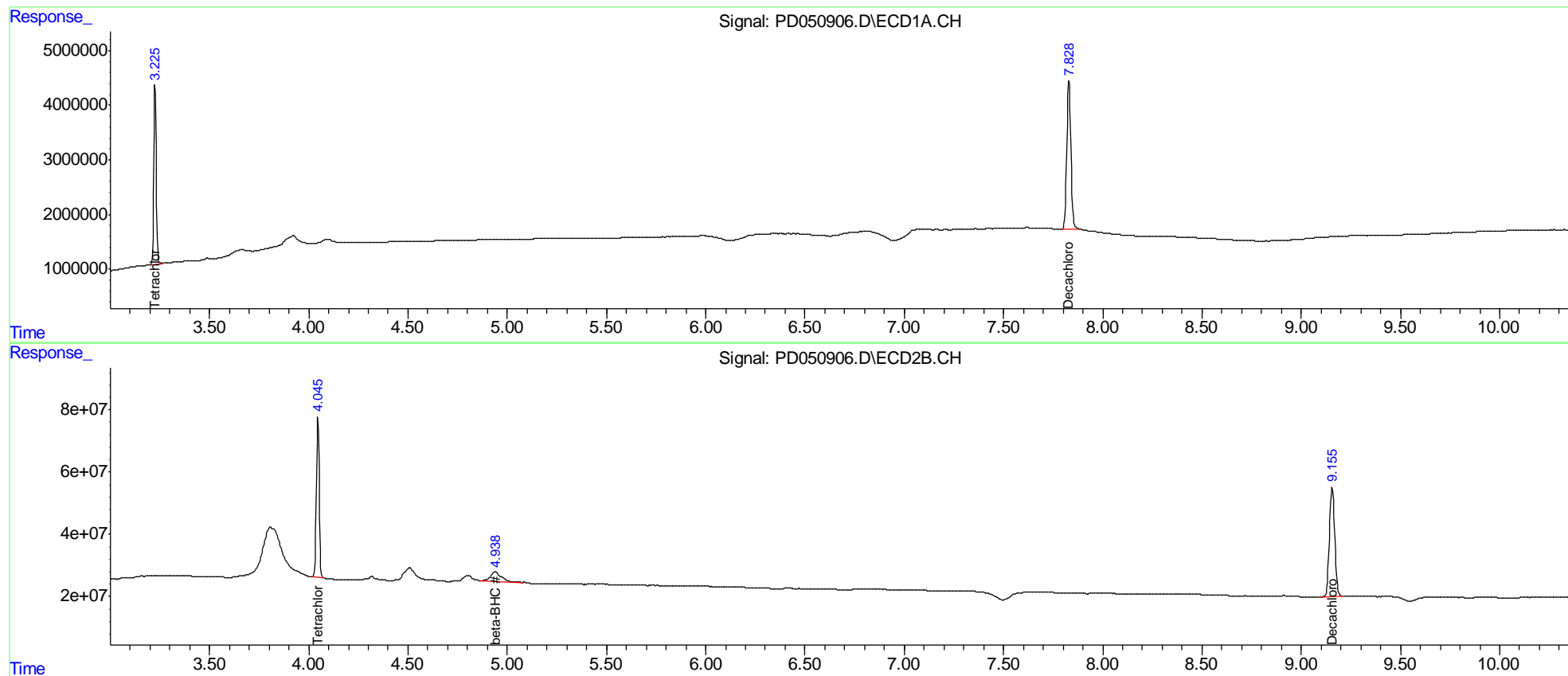
(f)=RT Delta > 1/2 Window (#)=Amounts differ by > 25% (m)=manual int.

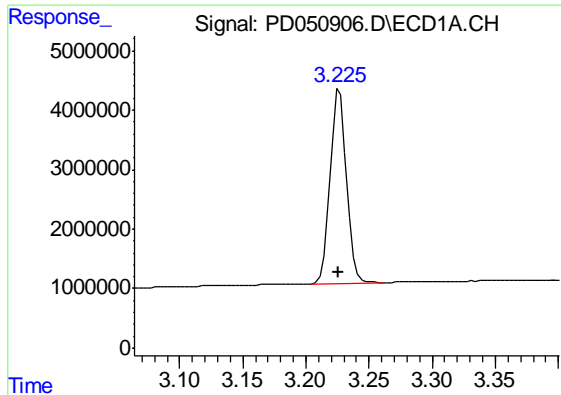
Data Path : Z:\pestpcbsrv\HPCHEM1\ECD_D\Data\PD010219\
Data File : PD050906.D
Signal(s) : Signal #1: ECD1A.CH Signal #2: ECD2B.CH
Acq On : 02 Jan 2019 15:54
Operator : AJ\SJ
Sample : PIBLK28
Misc :
ALS Vial : 2 Sample Multiplier: 1

Instrument :
ECD_D
ClientSampleId :
PIBLK28

Integration File signal 1: autoint1.e
Integration File signal 2: autoint2.e
Quant Time: Jan 04 05:42:45 2019
Quant Method : Z:\pestpcbsrv\HPCHEM1\ECD_D\Method\PD122718CLP.M
Quant Title : GC Extractables
QLast Update : Thu Jan 03 08:35:31 2019
Response via : Initial Calibration
Integrator: ChemStation 6890 Scale Mode: Large solvent peaks clipped

Volume Inj. : 1 µl
Signal #1 Phase : ZB-MR2 Signal #2 Phase: ZB-MR1
Signal #1 Info : 30M x 0.32mm x0.2 Signal #2 Info : 30M x 0.32mm x 0.50µm

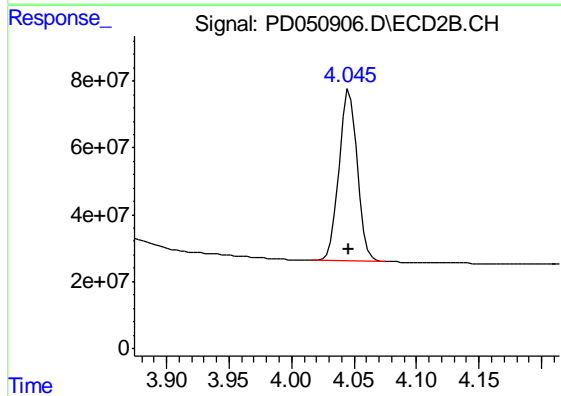




#1 Tetrachloro-m-xylene

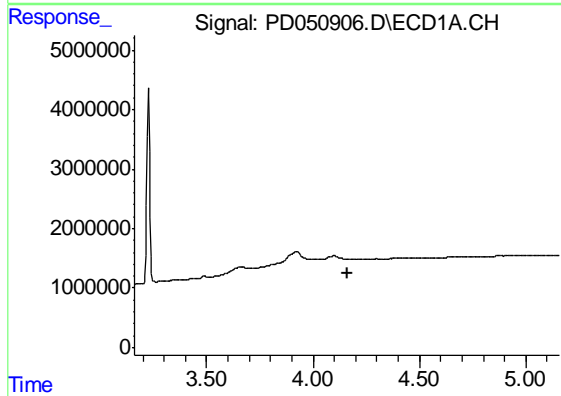
R.T.: 3.227 min
Delta R.T.: 0.000 min
Response: 29520486
Conc: 19.14 ng/ml

Instrument :
ECD_D
ClientSampleId :
PIBLK28



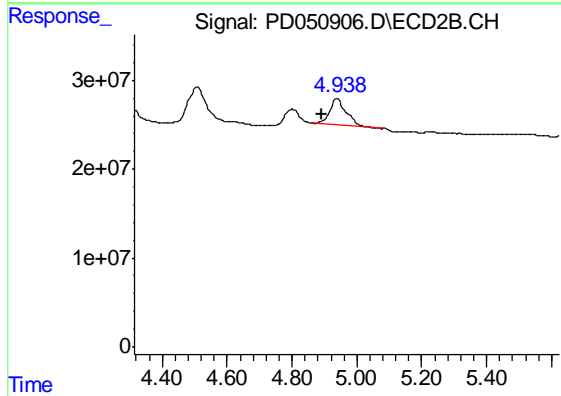
#1 Tetrachloro-m-xylene

R.T.: 4.046 min
Delta R.T.: 0.000 min
Response: 521340154
Conc: 19.34 ng/ml



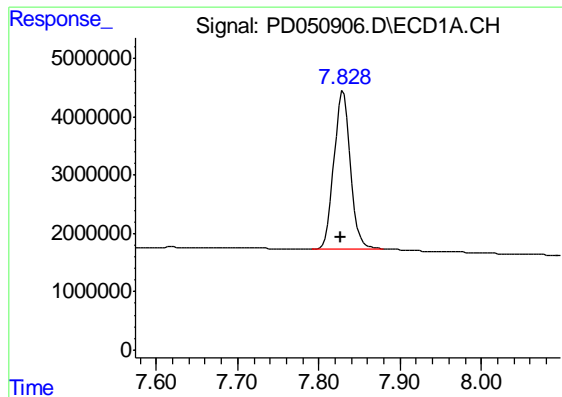
#6 beta-BHC

R.T.: 0.000 min
Exp R.T. : 4.160 min
Response: 0
Conc: N.D.



#6 beta-BHC

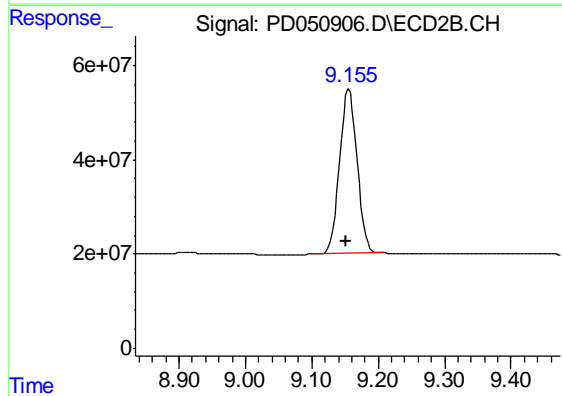
R.T.: 4.940 min
Delta R.T.: 0.047 min
Response: 107355759
Conc: 6.40 ng/ml



#27 Decachlorobiphenyl

R.T.: 7.830 min
Delta R.T.: 0.002 min
Response: 38396351
Conc: 34.08 ng/ml

Instrument :
ECD_D
ClientSampleId :
PIBLK28



#27 Decachlorobiphenyl

R.T.: 9.156 min
Delta R.T.: 0.004 min
Response: 644713023
Conc: 34.67 ng/ml