

Data Path : Z:\pestpcbsrv\HPCHEM1\ECD_D\Data\PD010319\
 Data File : PD050914.D
 Signal(s) : Signal #1: ECD1A.CH Signal #2: ECD2B.CH
 Acq On : 03 Jan 2019 12:43
 Operator : AJ\SJ
 Sample : J6592-12
 Misc :
 ALS Vial : 6 Sample Multiplier: 1

Instrument :
 ECD_D
 ClientSampleId :
 PEST-GPC2-BLANK-SPIKE

Integration File signal 1: autoint1.e
 Integration File signal 2: autoint2.e
 Quant Time: Jan 04 06:05:28 2019
 Quant Method : Z:\pestpcbsrv\HPCHEM1\ECD_D\Method\PD122718CLP.M
 Quant Title : GC Extractables
 QLast Update : Thu Jan 03 08:35:31 2019
 Response via : Initial Calibration
 Integrator: ChemStation 6890 Scale Mode: Large solvent peaks clipped

Volume Inj. : 1 µl
 Signal #1 Phase : ZB-MR2 Signal #2 Phase: ZB-MR1
 Signal #1 Info : 30M x 0.32mm x0.2 Signal #2 Info : 30M x 0.32mm x 0.50µm

Compound	RT#1	RT#2	Resp#1	Resp#2	ng/ml	ng/ml
----------	------	------	--------	--------	-------	-------

System Monitoring Compounds

Target Compounds

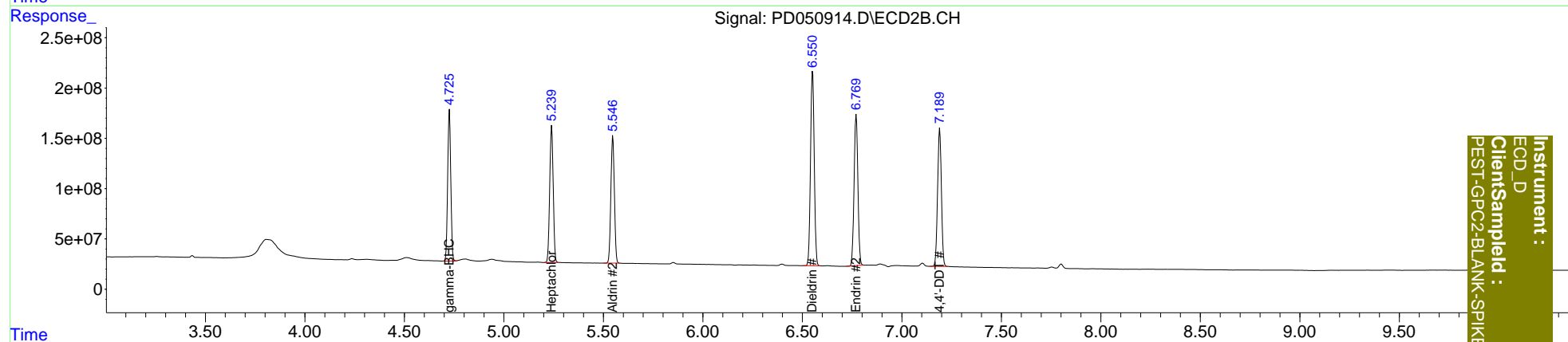
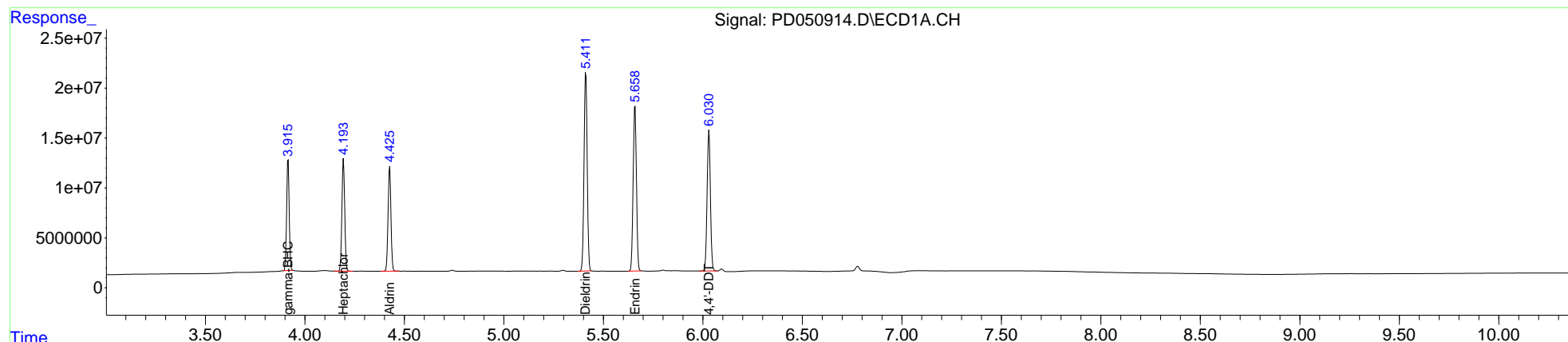
3) MA gamma-BHC...	3.916	4.727	101.5E6	1612.3E6	44.644	43.039
4) MA Heptachlor	4.194	5.241	110.5E6	1643.5E6	46.033	43.744
5) MB Aldrin	4.427	5.548	105.9E6	1535.4E6	48.713	46.226
13) MA Dieldrin	5.412	6.552	219.1E6	2521.2E6	91.902	84.819
14) MA Endrin	5.659	6.771	187.5E6	1993.2E6	94.138	88.254
17) MA 4,4'-DDT	6.031	7.191	162.8E6	1811.7E6	89.378	86.873

(f)=RT Delta > 1/2 Window (#)=Amounts differ by > 25% (m)=manual int.

Data Path : Z:\pestpcbsrv\HPCHEM1\ECD_D\Data\PD010319\
 Data File : PD050914.D
 Signal(s) : Signal #1: ECD1A.CH Signal #2: ECD2B.CH
 Acq On : 03 Jan 2019 12:43
 Operator : AJ\SJ
 Sample : J6592-12
 Misc :
 ALS Vial : 6 Sample Multiplier: 1

Integration File signal 1: autoint1.e
 Integration File signal 2: autoint2.e
 Quant Time: Jan 04 06:05:28 2019
 Quant Method : Z:\pestpcbsrv\HPCHEM1\ECD_D\Method\PD122718CLP.M
 Quant Title : GC Extractables
 QLast Update : Thu Jan 03 08:35:31 2019
 Response via : Initial Calibration
 Integrator: ChemStation 6890 Scale Mode: Large solvent peaks clipped

Volume Inj. : 1 µl
 Signal #1 Phase : ZB-MR2 Signal #2 Phase: ZB-MR1
 Signal #1 Info : 30M x 0.32mm x0.2 Signal #2 Info : 30M x 0.32mm x 0.50µm



Instrument :
 ECD_D
 ClientSampleId :
 PEST-GPC2-BLANK-SPIKE