

Data Path : Z:\pestpcbsrv\HPCHEM1\ECD_D\Data\PD010322\
 Data File : PD067570.D
 Signal(s) : Signal #1: ECD1A.ch Signal #2: ECD2B.ch
 Acq On : 03 Jan 2022 15:23
 Operator : AR\AJ
 Sample : M5331-01
 Misc :
 ALS Vial : 8 Sample Multiplier: 1

Instrument :
 ECD_D
ClientSampleId :
 WC-1

Manual Integrations
APPROVED

Reviewed By :Ankita Jodhani 01/04/2022
 Supervised By :mohammad ahmed 01/05/2022

Integration File signal 1: autoint1.e
 Integration File signal 2: autoint2.e
 Quant Time: Jan 04 00:37:42 2022
 Quant Method : Z:\pestpcbsrv\HPCHEM1\ECD_L\methods\PD122821.M
 Quant Title : GC Extractables
 QLast Update : Tue Dec 28 03:00:50 2021
 Response via : Initial Calibration
 Integrator: ChemStation

Volume Inj. : 1 µl
 Signal #1 Phase : ZB-MR2 Signal #2 Phase: ZB-MR1
 Signal #1 Info : 30M x 0.32mm x0.2 Signal #2 Info : 30M x 0.32mm x0.5µm

Compound	RT#1	RT#2	Resp#1	Resp#2	ng/ml	ng/ml

System Monitoring Compounds						
1) SA Tetrachlo...	3.434	3.962	20008911	76833902	11.011	11.645m
28) SA Decachlor...	8.155	9.018	10116002	52902077	11.388	11.131
Target Compounds						
12) B 4,4'-DDE	5.573	6.297	1272698	5236918	0.575m	0.850m#

(f)=RT Delta > 1/2 Window (#)=Amounts differ by > 25% (m)=manual int.

Data Path : Z:\pestpcbsrv\HPCHEM1\ECD_D\Data\PD010322\
 Data File : PD067570.D
 Signal(s) : Signal #1: ECD1A.ch Signal #2: ECD2B.ch
 Acq On : 03 Jan 2022 15:23
 Operator : AR\AJ
 Sample : M5331-01
 Misc :
 ALS Vial : 8 Sample Multiplier: 1

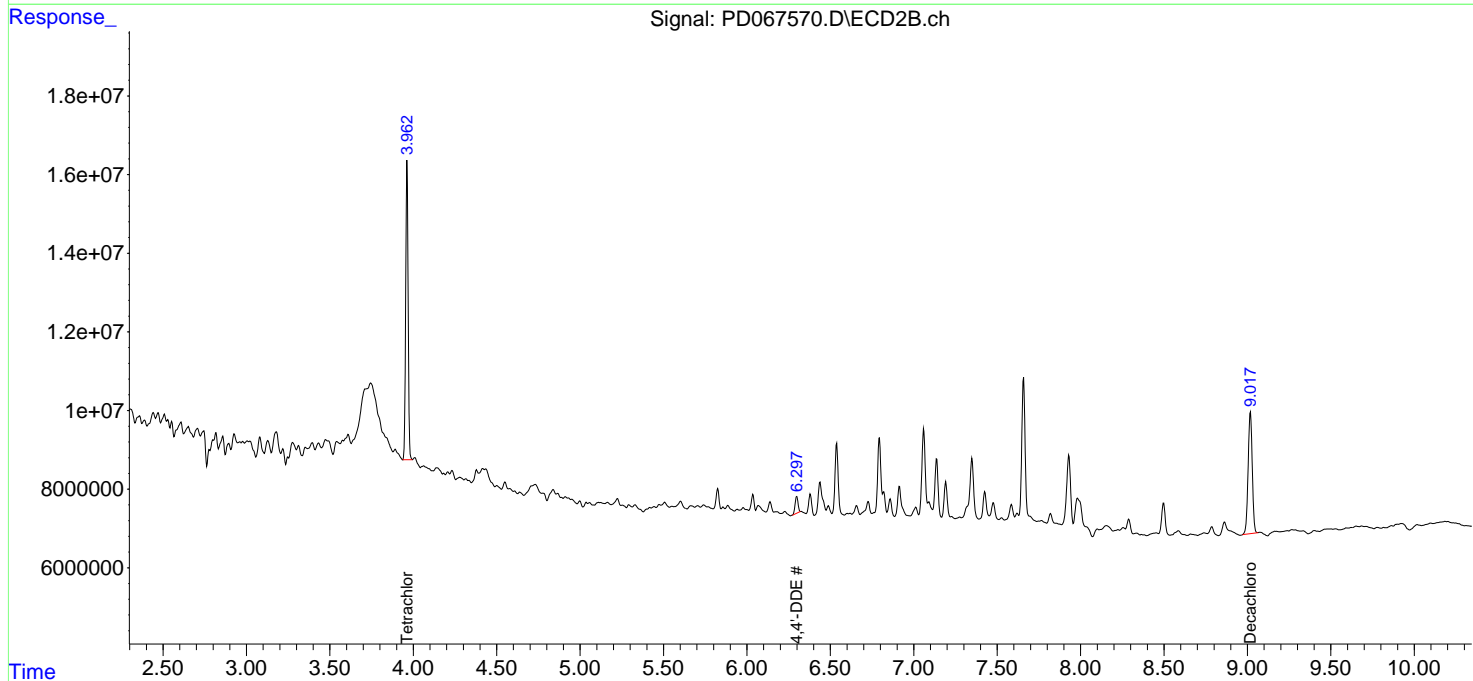
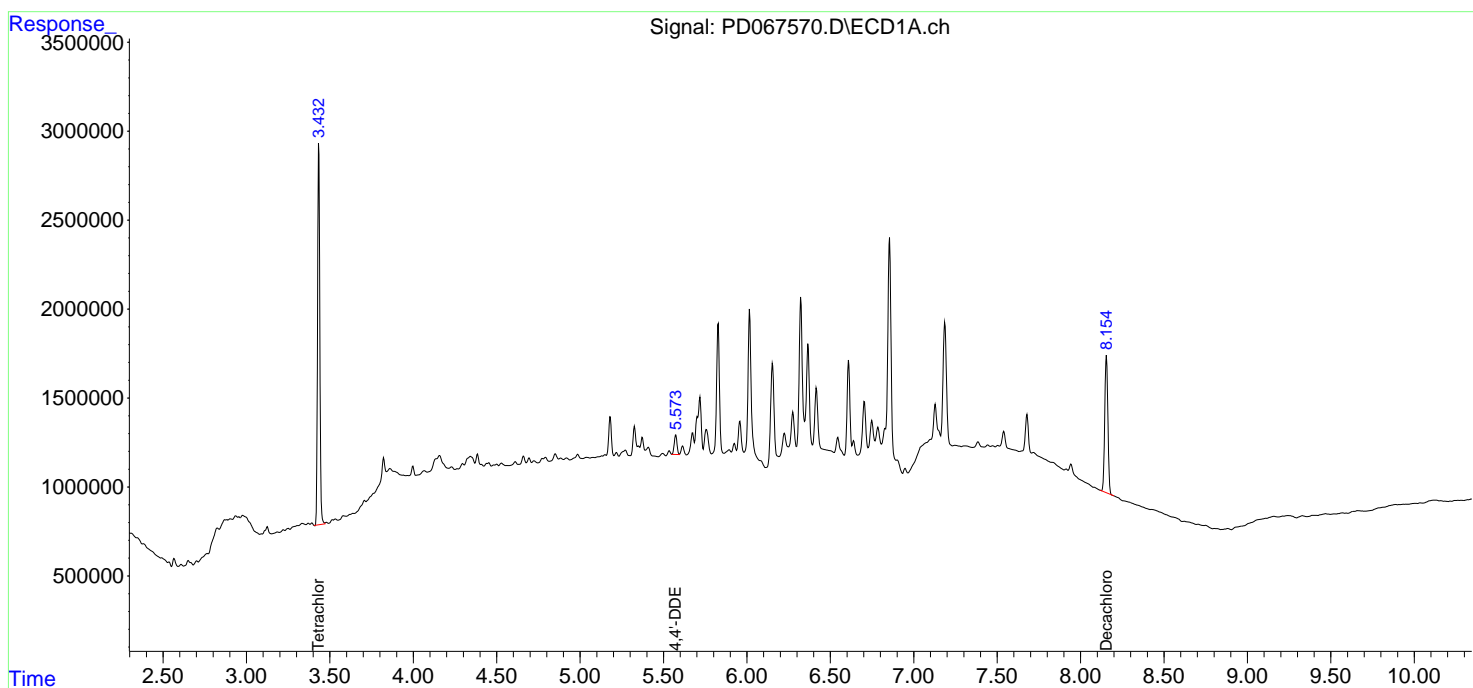
Instrument :
 ECD_D
 ClientSampleId :
 WC-1

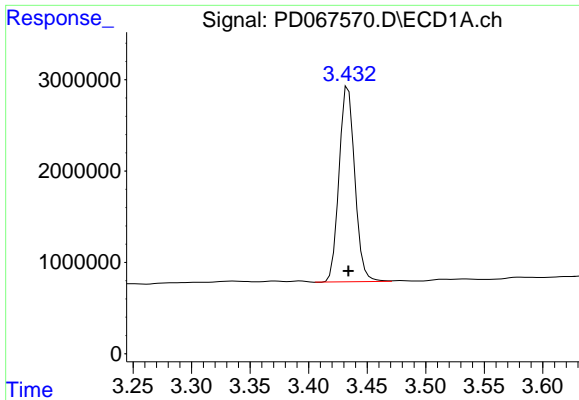
Manual Integrations
 APPROVED

Reviewed By :Ankita Jodhani 01/04/2022
 Supervised By :mohammad ahmed 01/05/2022

Integration File signal 1: autoint1.e
 Integration File signal 2: autoint2.e
 Quant Time: Jan 04 00:37:42 2022
 Quant Method : Z:\pestpcbsrv\HPCHEM1\ECD_L\methods\PD122821.M
 Quant Title : GC Extractables
 QLast Update : Tue Dec 28 03:00:50 2021
 Response via : Initial Calibration
 Integrator: ChemStation

Volume Inj. : 1 µl
 Signal #1 Phase : ZB-MR2 Signal #2 Phase: ZB-MR1
 Signal #1 Info : 30M x 0.32mm x0.2 Signal #2 Info : 30M x 0.32mm x0.5µm

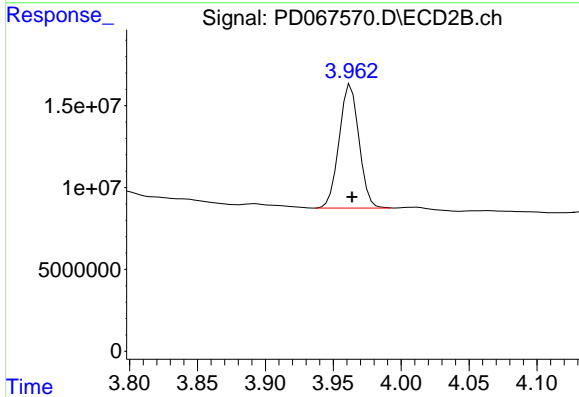




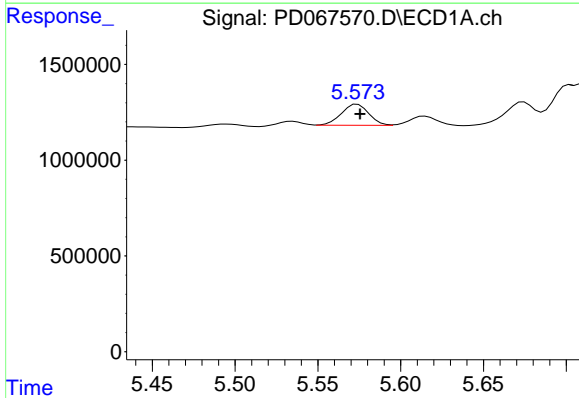
#1 Tetrachloro-m-xylene
 R.T.: 3.434 min
 Delta R.T.: 0.000 min
 Response: 20008911
 Conc: 11.01 ng/ml

Instrument :
 ECD_D
 ClientSampleId :
 WC-1

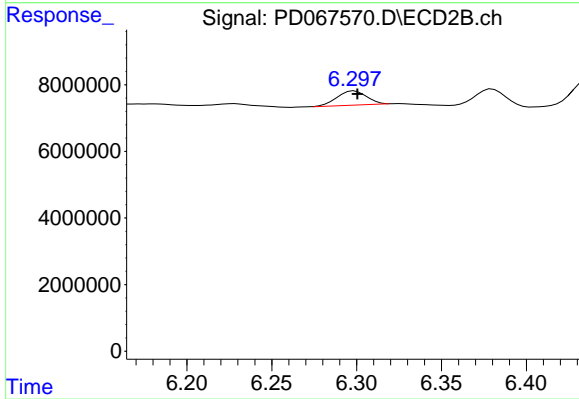
Manual Integrations
APPROVED
 Reviewed By :Ankita Jodhani 01/04/2022
 Supervised By :mohammad ahmed 01/05/2022



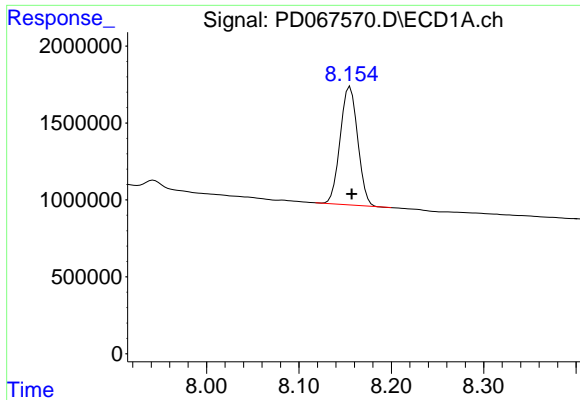
#1 Tetrachloro-m-xylene
 R.T.: 3.962 min
 Delta R.T.: -0.002 min
 Response: 76833902
 Conc: 11.64 ng/ml m



#12 4,4'-DDE
 R.T.: 5.573 min
 Delta R.T.: -0.003 min
 Response: 1272698
 Conc: 0.57 ng/ml m



#12 4,4'-DDE
 R.T.: 6.297 min
 Delta R.T.: -0.003 min
 Response: 5236918
 Conc: 0.85 ng/ml m

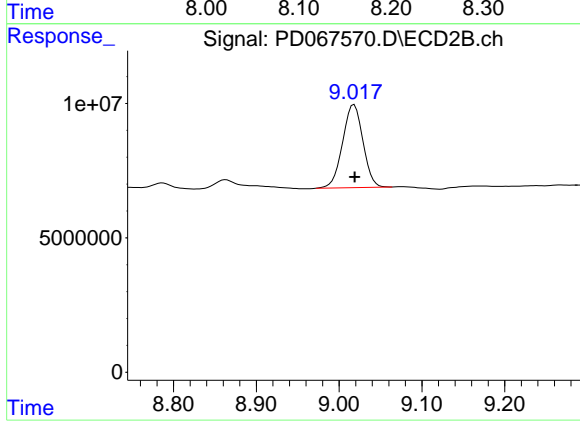


#28 Decachlorobiphenyl
R.T.: 8.155 min
Delta R.T.: -0.002 min
Response: 10116002
Conc: 11.39 ng/ml

Instrument :
ECD_D
ClientSampleId :
WC-1

Manual Integrations
APPROVED

Reviewed By :Ankita Jodhani 01/04/2022
Supervised By :mohammad ahmed 01/05/2022



#28 Decachlorobiphenyl
R.T.: 9.018 min
Delta R.T.: 0.000 min
Response: 52902077
Conc: 11.13 ng/ml