

Data Path : Z:\pestpcbsrv\HPCHEM1\ECD_D\Data\PD010324\
 Data File : PD080671.D
 Signal(s) : Signal #1: ECD1A.ch Signal #2: ECD2B.ch
 Acq On : 03 Jan 2024 17:14
 Operator : AR\AJ
 Sample : TOXAPHENE396
 Misc :
 ALS Vial : 4 Sample Multiplier: 1

Instrument :
 ECD_D
 ClientSampleId :
 TOXAPH3112

Integration File signal 1: autoint1.e
 Integration File signal 2: autoint2.e
 Quant Time: Jan 03 21:41:41 2024
 Quant Method : Z:\pestpcbsrv\HPCHEM1\ECD_D\Method\PD121623CLP.M
 Quant Title : GC Extractables
 QLast Update : Thu Dec 21 13:52:23 2023
 Response via : Initial Calibration
 Integrator: ChemStation

Volume Inj. : 1 µl
 Signal #1 Phase : ZB-MR1 Signal #2 Phase: ZB-MR2
 Signal #1 Info : 30M x 0.32mm x0.5 Signal #2 Info : 30M x 0.32mm x 0.25µm

Compound	RT#1	RT#2	Resp#1	Resp#2	ng/ml	ng/ml

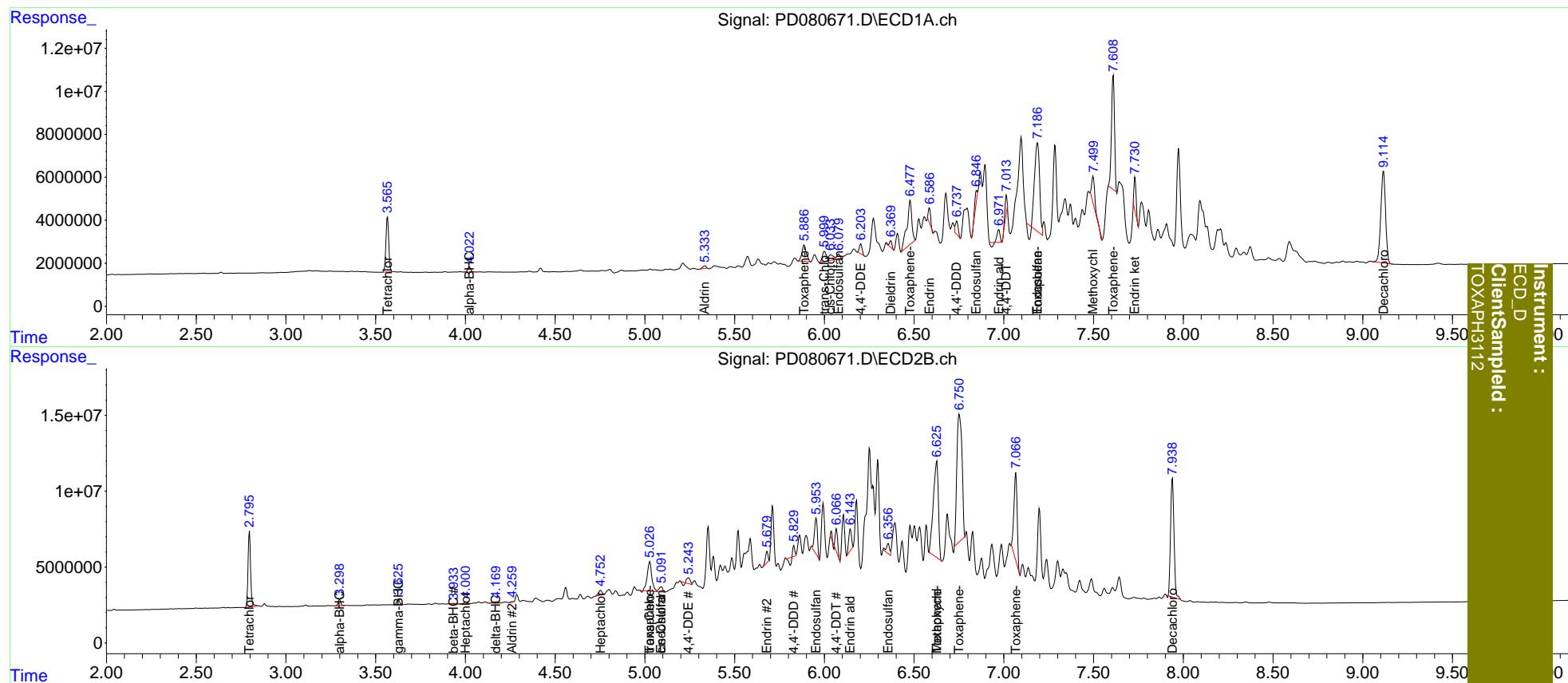
System Monitoring Compounds						
1) SA Tetrachlo...	3.566	2.797	28194273	49691635	22.082	22.348
27) SA Decachlor...	9.116	7.939	79084067	103.6E6	49.189	43.149
Target Compounds						
2) A alpha-BHC	4.023	3.299	2681687	4453429	1.301	1.306
3) MA gamma-BHC...	0.000	3.626	0	4053468	N.D.	1.259
4) MA Heptachlor	0.000	4.001f	0	1527638	N.D.	0.477
5) MB Aldrin	5.335f	4.261	1488489	403435	0.665	0.114 #
6) B beta-BHC	0.000	3.935	0	437376	N.D.	0.255
7) B delta-BHC	0.000	4.170	0	1414333	N.D.	0.364
8) B Heptachlo...	0.000	4.754	0	4034975	N.D.	1.191
9) A Endosulfan I	6.080	5.092	2609346	4981039	1.465	1.817
10) B trans-Chl...	6.000	5.028	7215762	34313727	3.516	10.424 #
11) B cis-Chlor...	6.036	5.092	4859411	4981039	2.315	1.482 #
12) B 4,4'-DDE	6.203	5.244	4940642	4087723	2.558	1.301 #
14) MA Endrin	6.586	5.681	6250399	7019526	3.991	2.668 #
15) B Endosulfa...	6.849	5.954	3527378	27701188	1.882	9.554 #
16) A 4,4'-DDD	6.738	5.830	6987043	1117136	5.037	0.486 #
17) MA 4,4'-DDT	7.015f	6.067	6674146	15345264	4.516	6.364 #
18) B Endrin al...	6.972	6.145	5068618	15213260	3.398	6.597 #
19) B Endosulfa...	7.188	6.356	76189500	8328892	41.540	2.969 #
20) A Methoxychlor	7.497	6.627	15257882	123.8E6	19.270	98.353 #
21) B Endrin ke...	7.731f	6.876	12648801	-6801122	6.501	N.D. #
22) Toxaphene-1	5.887	5.028	12977679	34313727	2094.291	2012.694
23) Toxaphene-2	6.478	5.382	38867248	-12953874	2176.882	N.D. #
24) Toxaphene-3	0.000	6.627	0	123.8E6	N.D.	2004.912
25) Toxaphene-4	7.188	6.752	76189500	167.9E6	1943.576	1992.818
26) Toxaphene-5	7.610	7.067	62430149	68860795	2169.135	1940.880

(f)=RT Delta > 1/2 Window (#)=Amounts differ by > 25% (m)=manual int.

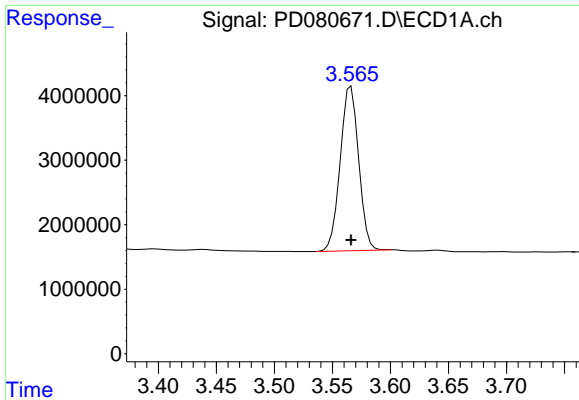
Data Path : Z:\pestpcbsrv\HPCHEM1\ECD_D\Data\PD010324\
 Data File : PD080671.D
 Signal(s) : Signal #1: ECD1A.ch Signal #2: ECD2B.ch
 Acq On : 03 Jan 2024 17:14
 Operator : AR\AJ
 Sample : TOXAPHENE396
 Misc :
 ALS Vial : 4 Sample Multiplier: 1

Integration File signal 1: autoint1.e
 Integration File signal 2: autoint2.e
 Quant Time: Jan 03 21:41:41 2024
 Quant Method : Z:\pestpcbsrv\HPCHEM1\ECD_D\Method\PD121623CLP.M
 Quant Title : GC Extractables
 QLast Update : Thu Dec 21 13:52:23 2023
 Response via : Initial Calibration
 Integrator: ChemStation

Volume Inj. : 1 µl
 Signal #1 Phase : ZB-MR1 Signal #2 Phase: ZB-MR2
 Signal #1 Info : 30M x 0.32mm x0.5 Signal #2 Info : 30M x 0.32mm x 0.25µm



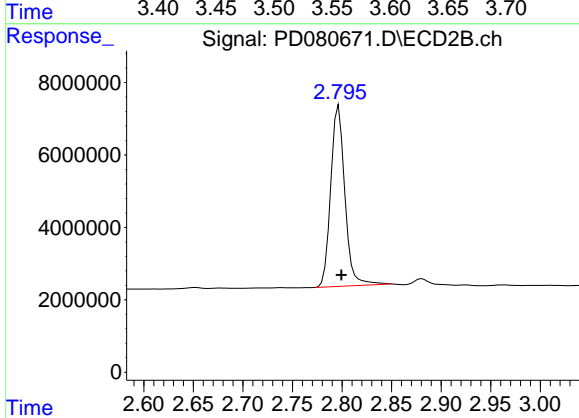
Instrument :
 ECD_D
 ClientSampled :
 TOXAPH3112



#1 Tetrachloro-m-xylene

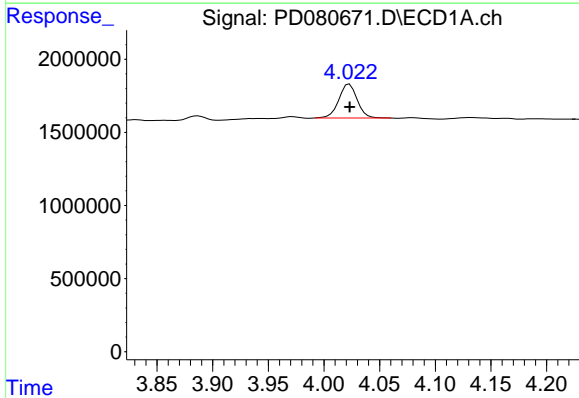
R.T.: 3.566 min
 Delta R.T.: 0.000 min
 Response: 28194273
 Conc: 22.08 ng/ml

Instrument :
 ECD_D
 ClientSampleId :
 TOXAPH3112



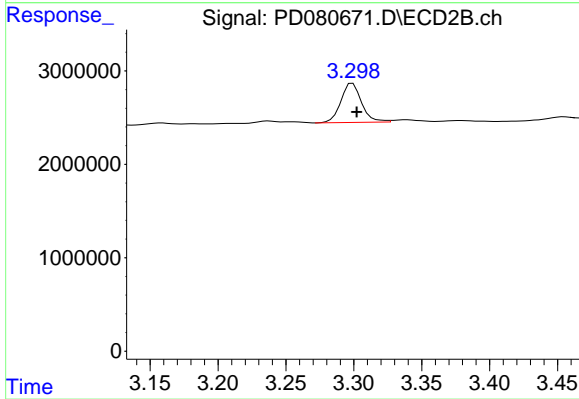
#1 Tetrachloro-m-xylene

R.T.: 2.797 min
 Delta R.T.: -0.003 min
 Response: 49691635
 Conc: 22.35 ng/ml



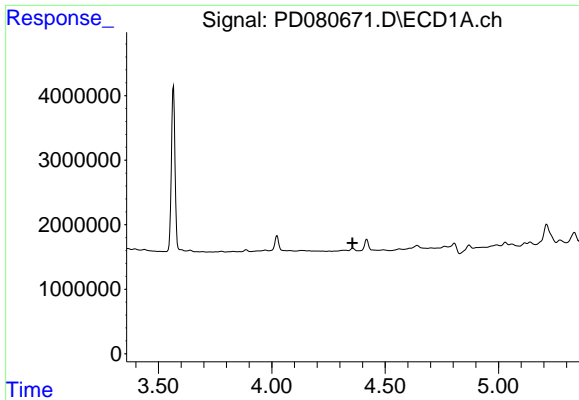
#2 alpha-BHC

R.T.: 4.023 min
 Delta R.T.: 0.000 min
 Response: 2681687
 Conc: 1.30 ng/ml



#2 alpha-BHC

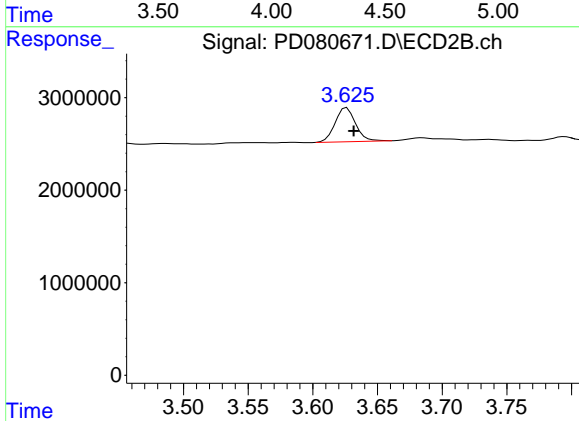
R.T.: 3.299 min
 Delta R.T.: -0.003 min
 Response: 4453429
 Conc: 1.31 ng/ml



#3 gamma-BHC (Lindane)

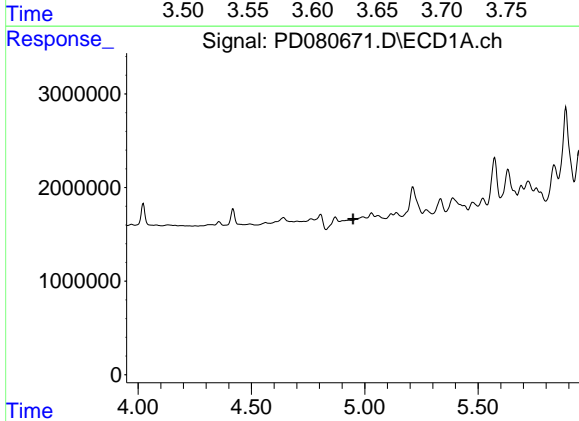
R.T.: 0.000 min
 Exp R.T.: 4.356 min
 Response: 0
 Conc: N.D.

Instrument :
 ECD_D
 ClientSampleId :
 TOXAPH3112



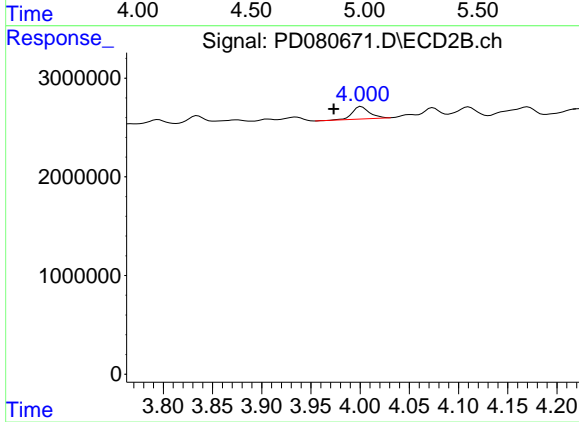
#3 gamma-BHC (Lindane)

R.T.: 3.626 min
 Delta R.T.: -0.005 min
 Response: 4053468
 Conc: 1.26 ng/ml



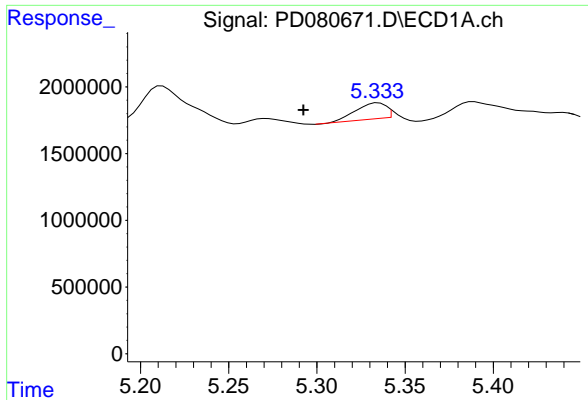
#4 Heptachlor

R.T.: 0.000 min
 Exp R.T.: 4.949 min
 Response: 0
 Conc: N.D.



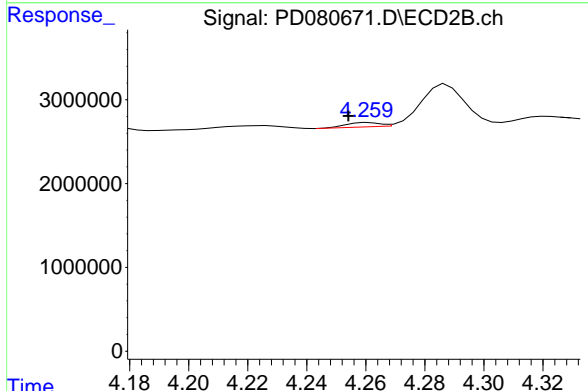
#4 Heptachlor

R.T.: 4.001 min
 Delta R.T.: 0.028 min
 Response: 1527638
 Conc: 0.48 ng/ml

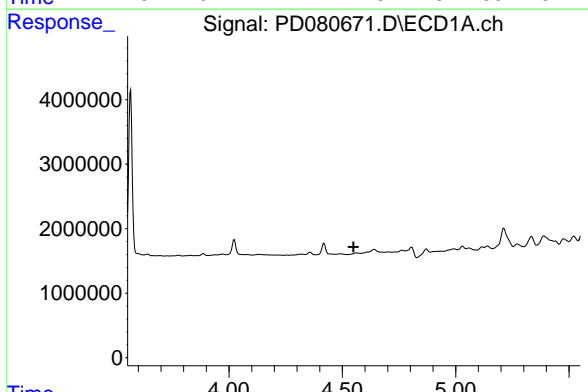


#5 Aldrin
 R.T.: 5.335 min
 Delta R.T.: 0.043 min
 Response: 1488489
 Conc: 0.67 ng/ml

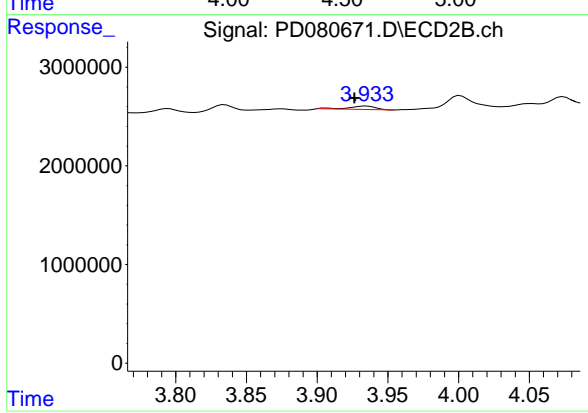
Instrument : ECD_D
 ClientSampleId : TOXAPH3112



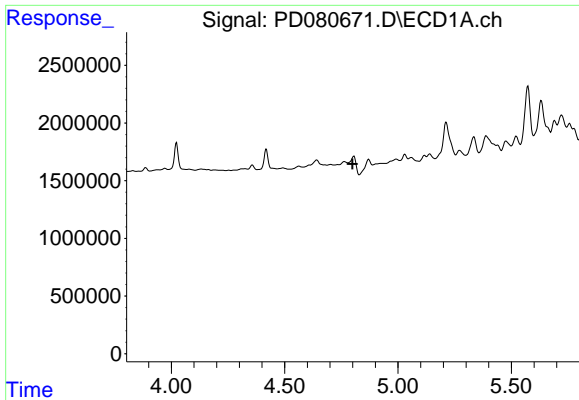
#5 Aldrin
 R.T.: 4.261 min
 Delta R.T.: 0.007 min
 Response: 403435
 Conc: 0.11 ng/ml



#6 beta-BHC
 R.T.: 0.000 min
 Exp R.T. : 4.550 min
 Response: 0
 Conc: N.D.



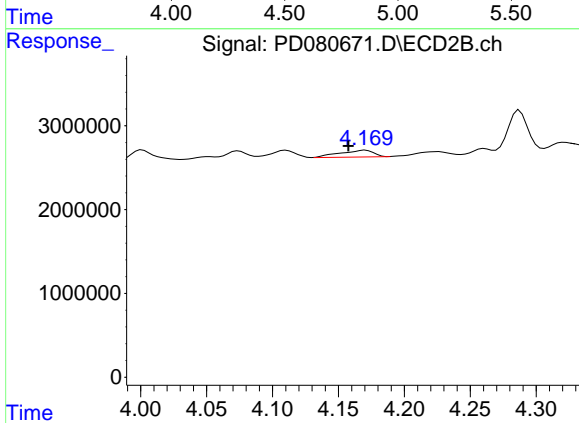
#6 beta-BHC
 R.T.: 3.935 min
 Delta R.T.: 0.008 min
 Response: 437376
 Conc: 0.25 ng/ml



#7 delta-BHC

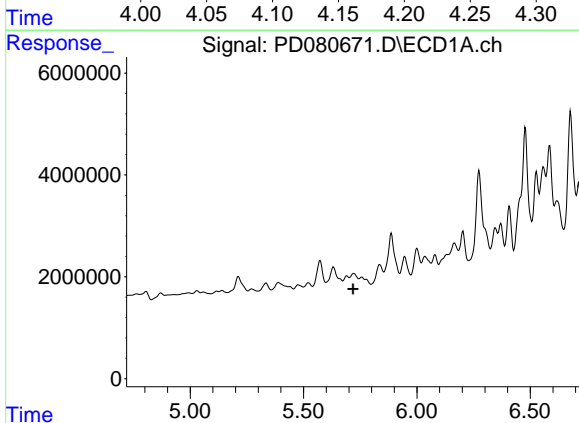
R.T.: 0.000 min
 Exp R.T.: 4.799 min
 Response: 0
 Conc: N.D.

Instrument :
 ECD_D
 ClientSampleId :
 TOXAPH3112



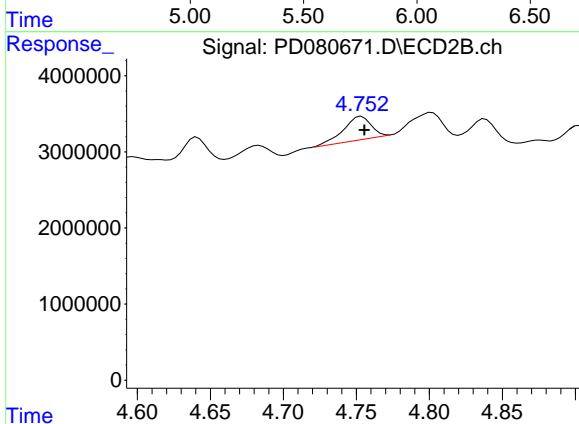
#7 delta-BHC

R.T.: 4.170 min
 Delta R.T.: 0.013 min
 Response: 1414333
 Conc: 0.36 ng/ml



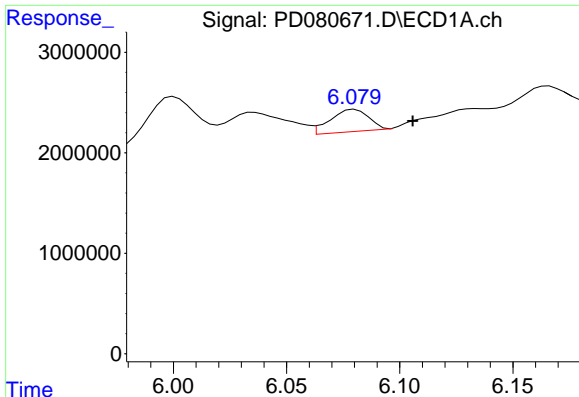
#8 Heptachlor epoxide

R.T.: 0.000 min
 Exp R.T.: 5.719 min
 Response: 0
 Conc: N.D.



#8 Heptachlor epoxide

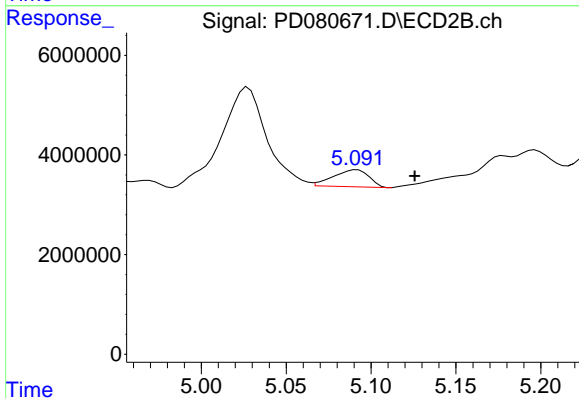
R.T.: 4.754 min
 Delta R.T.: -0.002 min
 Response: 4034975
 Conc: 1.19 ng/ml



#9 Endosulfan I

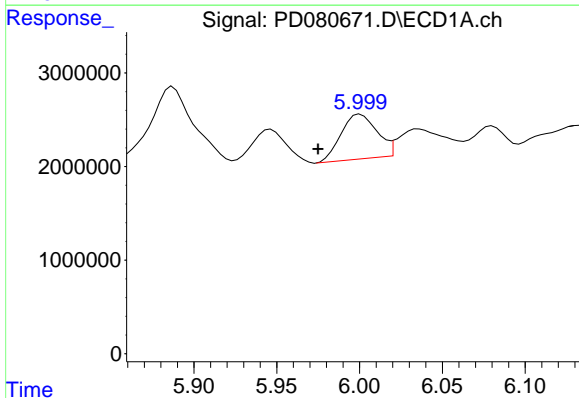
R.T.: 6.080 min
 Delta R.T.: -0.026 min
 Response: 2609346
 Conc: 1.46 ng/ml

Instrument :
 ECD_D
 ClientSampleId :
 TOXAPH3112



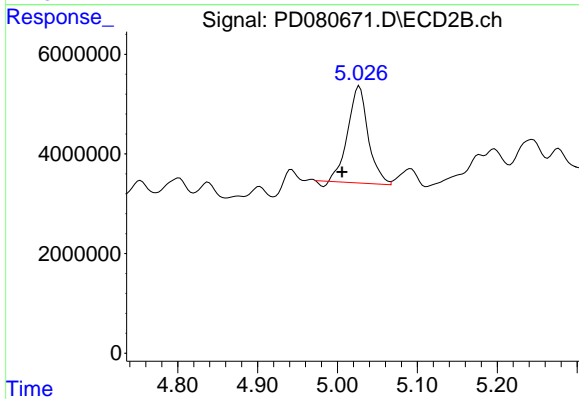
#9 Endosulfan I

R.T.: 5.092 min
 Delta R.T.: -0.034 min
 Response: 4981039
 Conc: 1.82 ng/ml



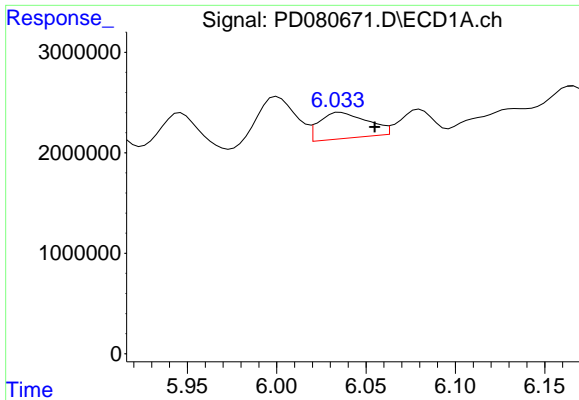
#10 trans-Chlordane

R.T.: 6.000 min
 Delta R.T.: 0.025 min
 Response: 7215762
 Conc: 3.52 ng/ml



#10 trans-Chlordane

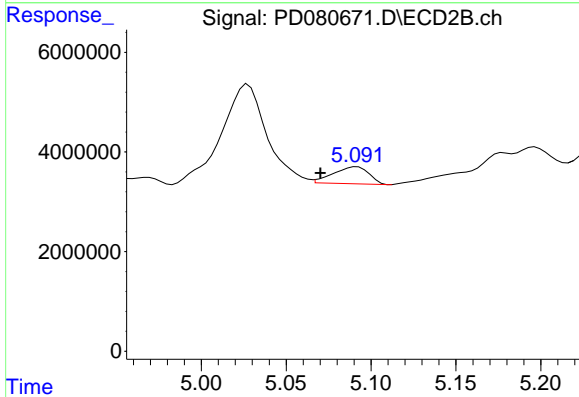
R.T.: 5.028 min
 Delta R.T.: 0.022 min
 Response: 34313727
 Conc: 10.42 ng/ml



#11 cis-Chlordane

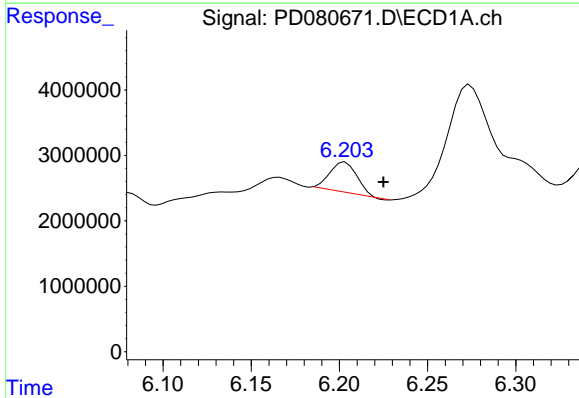
R.T.: 6.036 min
 Delta R.T.: -0.019 min
 Response: 4859411
 Conc: 2.32 ng/ml

Instrument :
 ECD_D
 ClientSampleId :
 TOXAPH3112



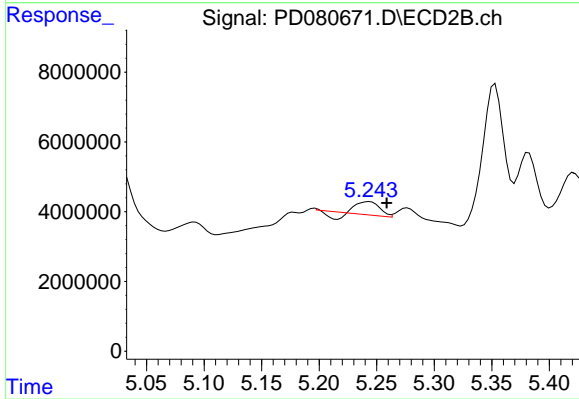
#11 cis-Chlordane

R.T.: 5.092 min
 Delta R.T.: 0.022 min
 Response: 4981039
 Conc: 1.48 ng/ml



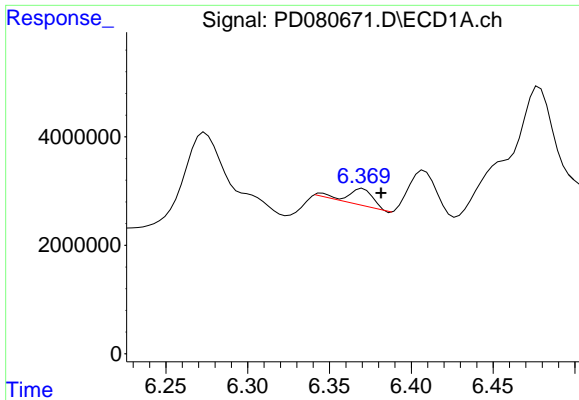
#12 4,4'-DDE

R.T.: 6.203 min
 Delta R.T.: -0.022 min
 Response: 4940642
 Conc: 2.56 ng/ml



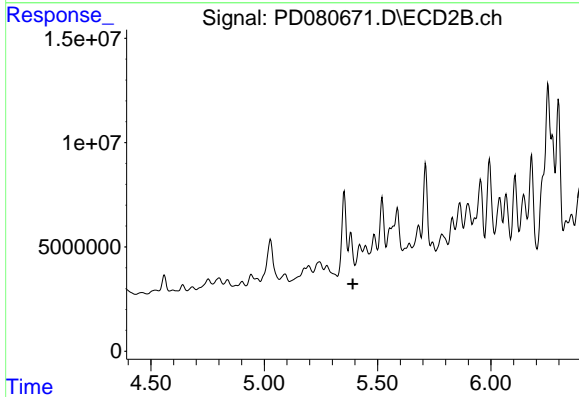
#12 4,4'-DDE

R.T.: 5.244 min
 Delta R.T.: -0.015 min
 Response: 4087723
 Conc: 1.30 ng/ml

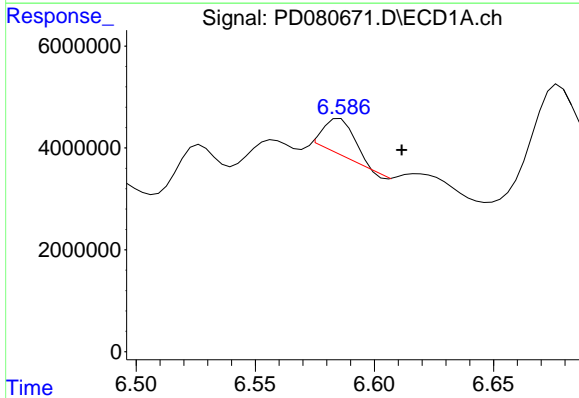


#13 Dieldrin
 R.T.: 6.370 min
 Delta R.T.: -0.011 min
 Response: 3332749
 Conc: 1.79 ng/ml

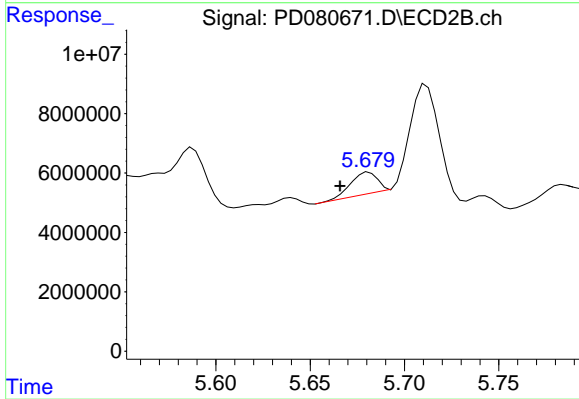
Instrument :
 ECD_D
 ClientSampleId :
 TOXAPH3112



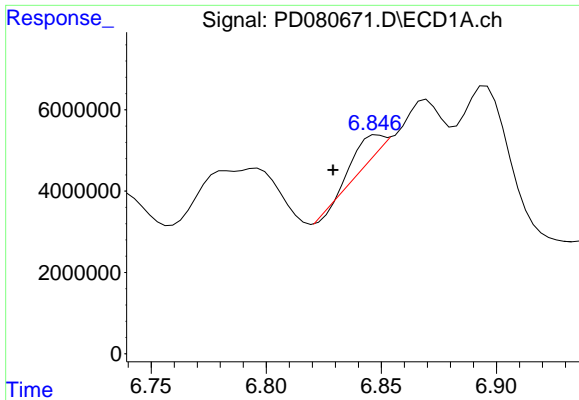
#13 Dieldrin
 R.T.: 5.382 min
 Delta R.T.: -0.008 min
 Response: -12953874
 Conc: N.D.



#14 Endrin
 R.T.: 6.586 min
 Delta R.T.: -0.026 min
 Response: 6250399
 Conc: 3.99 ng/ml



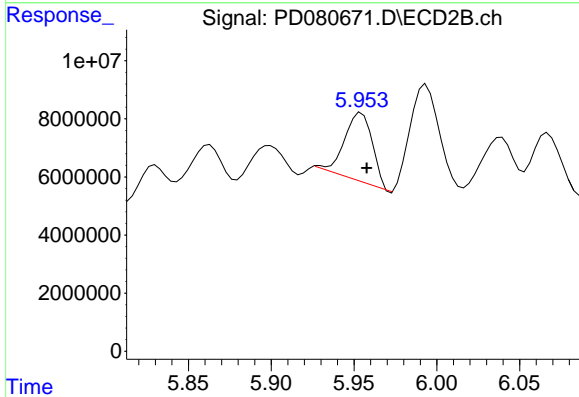
#14 Endrin
 R.T.: 5.681 min
 Delta R.T.: 0.015 min
 Response: 7019526
 Conc: 2.67 ng/ml



#15 Endosulfan II

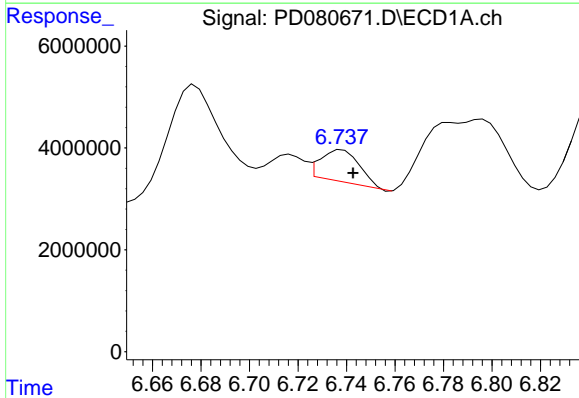
R.T.: 6.849 min
 Delta R.T.: 0.020 min
 Response: 3527378
 Conc: 1.88 ng/ml

Instrument :
 ECD_D
 ClientSampleId :
 TOXAPH3112



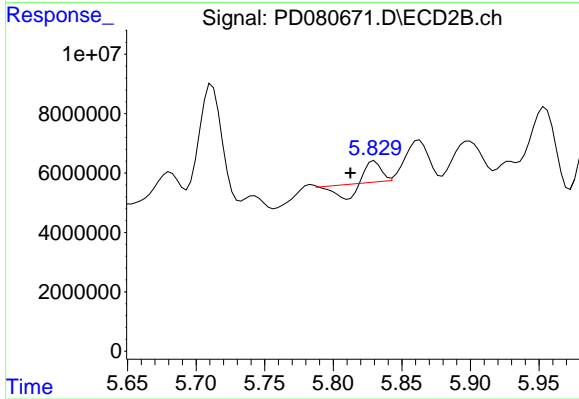
#15 Endosulfan II

R.T.: 5.954 min
 Delta R.T.: -0.003 min
 Response: 27701188
 Conc: 9.55 ng/ml



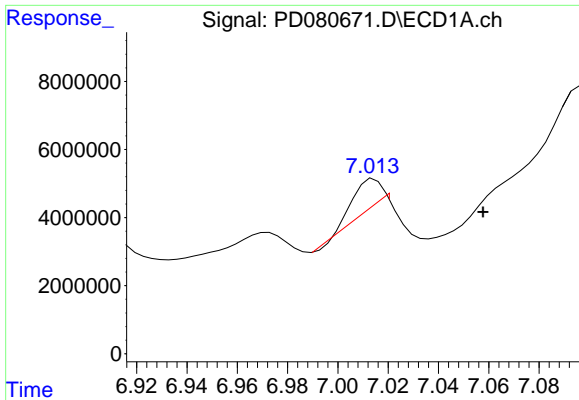
#16 4,4'-DDD

R.T.: 6.738 min
 Delta R.T.: -0.005 min
 Response: 6987043
 Conc: 5.04 ng/ml



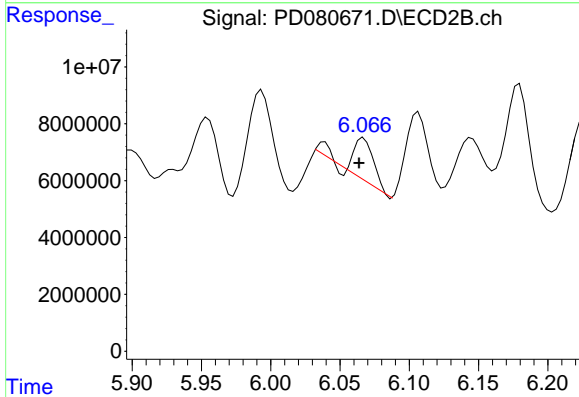
#16 4,4'-DDD

R.T.: 5.830 min
 Delta R.T.: 0.018 min
 Response: 1117136
 Conc: 0.49 ng/ml

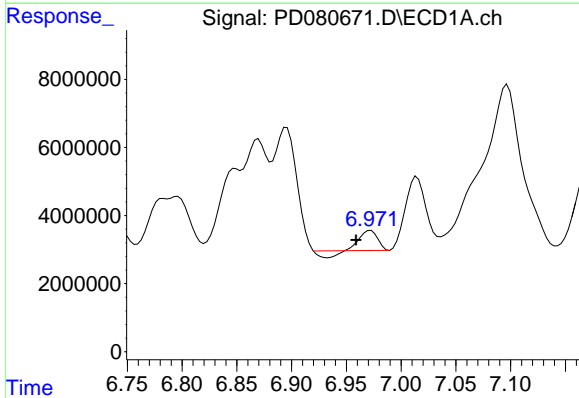


#17 4,4'-DDT
 R.T.: 7.015 min
 Delta R.T.: -0.043 min
 Response: 6674146
 Conc: 4.52 ng/ml

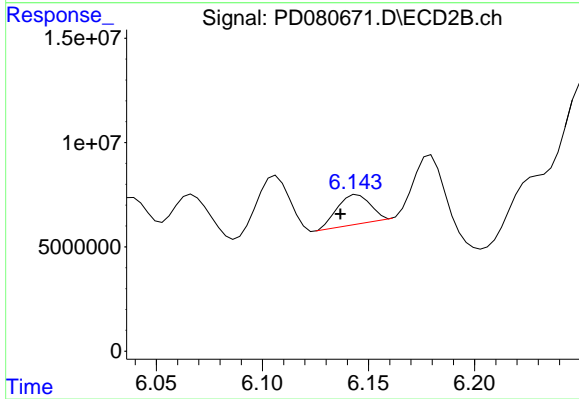
Instrument : ECD_D
 ClientSampleId : TOXAPH3112



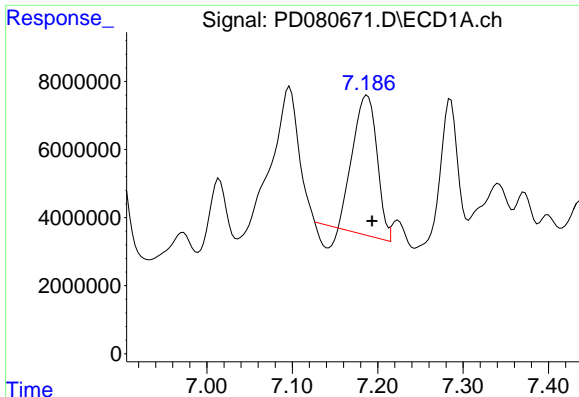
#17 4,4'-DDT
 R.T.: 6.067 min
 Delta R.T.: 0.003 min
 Response: 15345264
 Conc: 6.36 ng/ml



#18 Endrin aldehyde
 R.T.: 6.972 min
 Delta R.T.: 0.013 min
 Response: 5068618
 Conc: 3.40 ng/ml



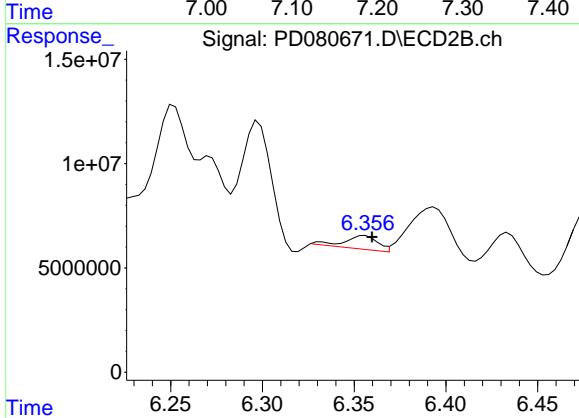
#18 Endrin aldehyde
 R.T.: 6.145 min
 Delta R.T.: 0.008 min
 Response: 15213260
 Conc: 6.60 ng/ml



#19 Endosulfan Sulfate

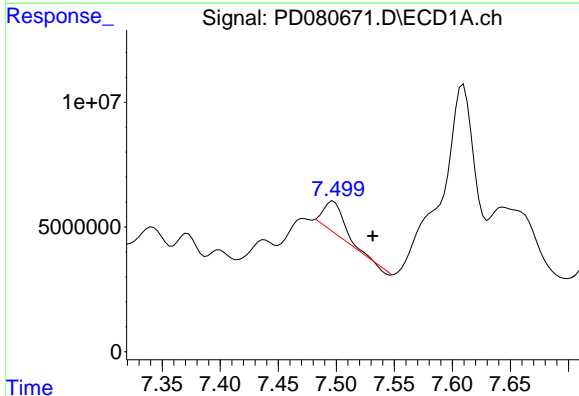
R.T.: 7.188 min
 Delta R.T.: -0.006 min
 Response: 76189500
 Conc: 41.54 ng/ml

Instrument :
 ECD_D
 ClientSampleId :
 TOXAPH3112



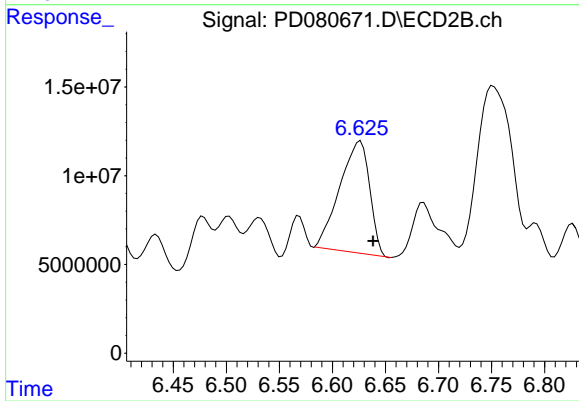
#19 Endosulfan Sulfate

R.T.: 6.356 min
 Delta R.T.: -0.004 min
 Response: 8328892
 Conc: 2.97 ng/ml



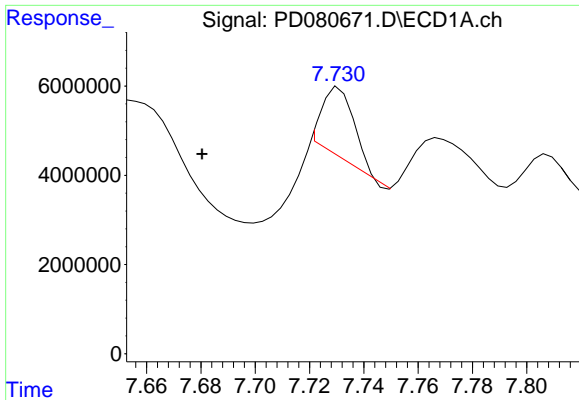
#20 Methoxychlor

R.T.: 7.497 min
 Delta R.T.: -0.034 min
 Response: 15257882
 Conc: 19.27 ng/ml



#20 Methoxychlor

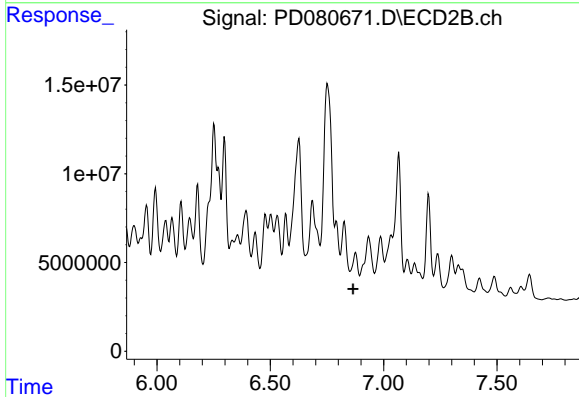
R.T.: 6.627 min
 Delta R.T.: -0.012 min
 Response: 123807083
 Conc: 98.35 ng/ml



#21 Endrin ketone

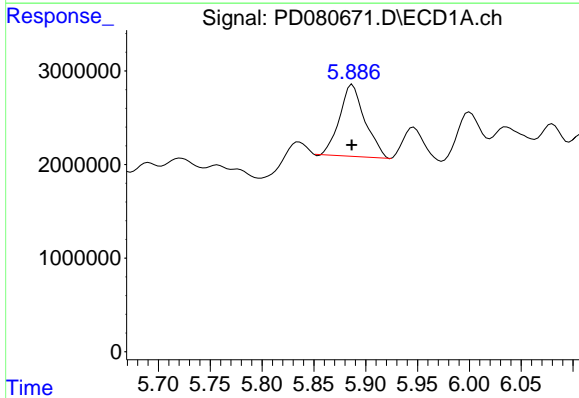
R.T.: 7.731 min
 Delta R.T.: 0.051 min
 Response: 12648801
 Conc: 6.50 ng/ml

Instrument :
 ECD_D
 ClientSampleId :
 TOXAPH3112



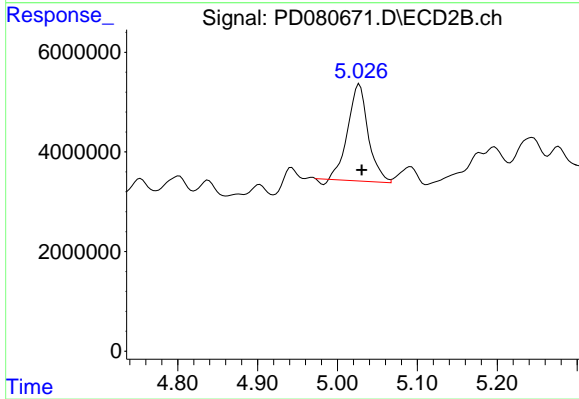
#21 Endrin ketone

R.T.: 6.876 min
 Delta R.T.: 0.011 min
 Response: -6801122
 Conc: N.D.



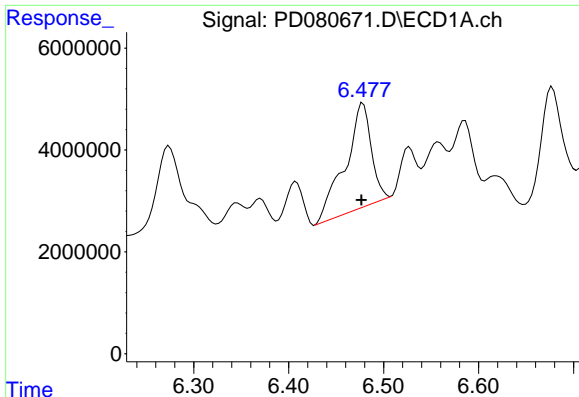
#22 Toxaphene-1

R.T.: 5.887 min
 Delta R.T.: 0.000 min
 Response: 12977679
 Conc: 2094.29 ng/ml



#22 Toxaphene-1

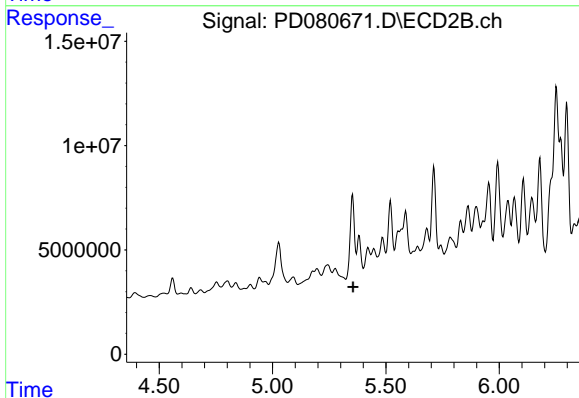
R.T.: 5.028 min
 Delta R.T.: -0.003 min
 Response: 34313727
 Conc: 2012.69 ng/ml



#23 Toxaphene-2

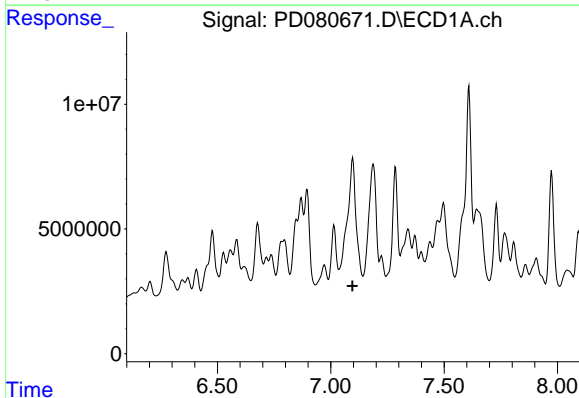
R.T.: 6.478 min
 Delta R.T.: 0.002 min
 Response: 38867248
 Conc: 2176.88 ng/m

Instrument :
 ECD_D
 ClientSampleId :
 TOXAPH3112



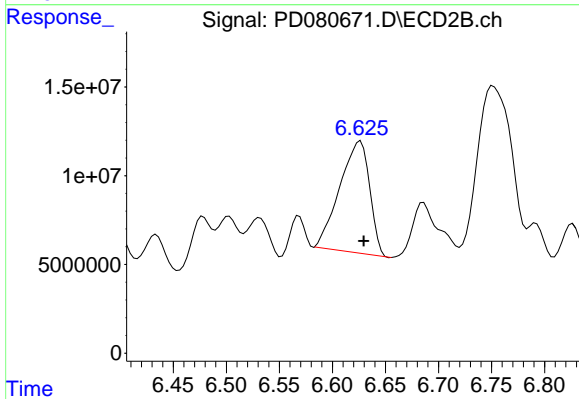
#23 Toxaphene-2

R.T.: 5.382 min
 Delta R.T.: 0.027 min
 Response: -12953874
 Conc: N.D.



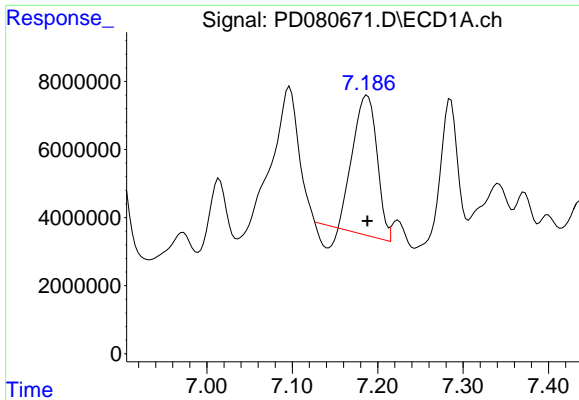
#24 Toxaphene-3

R.T.: 0.000 min
 Exp R.T. : 7.096 min
 Response: 0
 Conc: N.D.



#24 Toxaphene-3

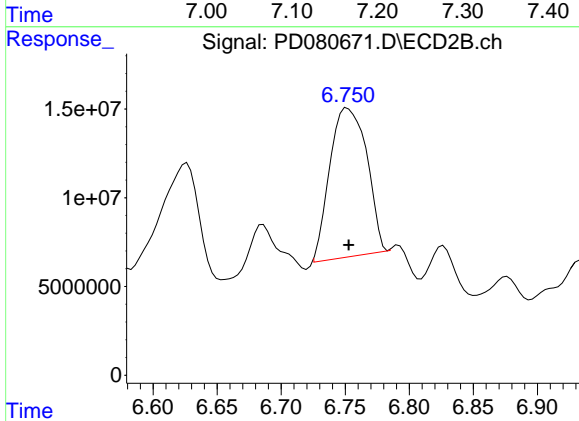
R.T.: 6.627 min
 Delta R.T.: -0.003 min
 Response: 123807083
 Conc: 2004.91 ng/ml



#25 Toxaphene-4

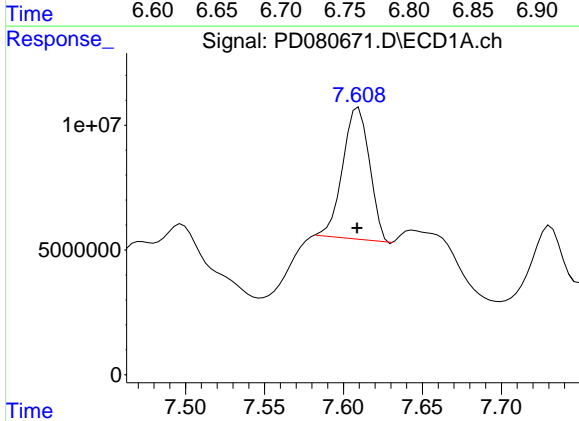
R.T.: 7.188 min
 Delta R.T.: 0.000 min
 Response: 76189500
 Conc: 1943.58 ng/m

Instrument :
 ECD_D
 ClientSampleId :
 TOXAPH3112



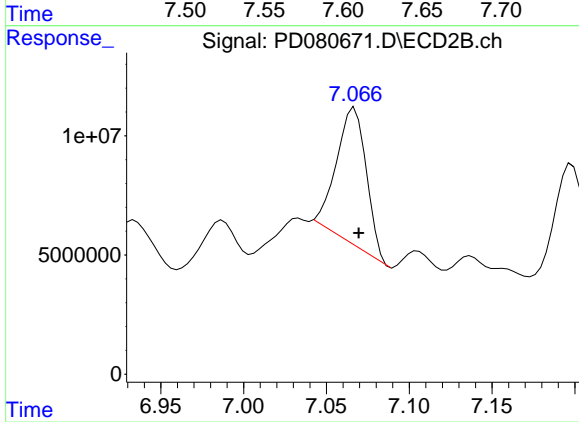
#25 Toxaphene-4

R.T.: 6.752 min
 Delta R.T.: 0.000 min
 Response: 167857341
 Conc: 1992.82 ng/ml



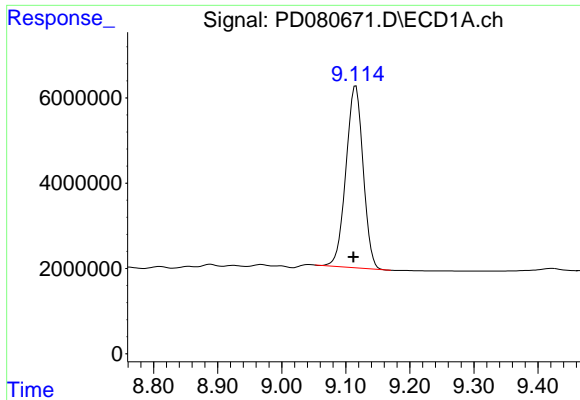
#26 Toxaphene-5

R.T.: 7.610 min
 Delta R.T.: 0.000 min
 Response: 62430149
 Conc: 2169.14 ng/ml



#26 Toxaphene-5

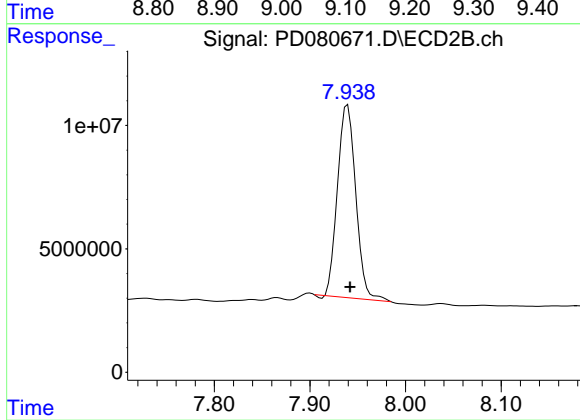
R.T.: 7.067 min
 Delta R.T.: -0.003 min
 Response: 68860795
 Conc: 1940.88 ng/ml



#27 Decachlorobiphenyl

R.T.: 9.116 min
Delta R.T.: 0.004 min
Response: 79084067
Conc: 49.19 ng/ml

Instrument :
ECD_D
ClientSampleId :
TOXAPH3112



#27 Decachlorobiphenyl

R.T.: 7.939 min
Delta R.T.: -0.003 min
Response: 103568866
Conc: 43.15 ng/ml