

Data Path : Z:\pestpcbsrv\HPCHEM1\ECD_D\Data\PD010422\
 Data File : PD067587.D
 Signal(s) : Signal #1: ECD1A.ch Signal #2: ECD2B.ch
 Acq On : 04 Jan 2022 15:07
 Operator : AR\AJ
 Sample : M5246-01
 Misc :
 ALS Vial : 11 Sample Multiplier: 1

Instrument :
 ECD_D
 ClientSampleId :

Integration File signal 1: autoint1.e
 Integration File signal 2: autoint2.e
 Quant Time: Jan 05 00:17:28 2022
 Quant Method : Z:\pestpcbsrv\HPCHEM1\ECD_D\Method\PD122921CLP.M
 Quant Title : GC Extractables
 QLast Update : Tue Dec 28 14:32:50 2021
 Response via : Initial Calibration
 Integrator: ChemStation

Volume Inj. : 1 µl
 Signal #1 Phase : ZB-MR2 Signal #2 Phase: ZB-MR1
 Signal #1 Info : 30M x 0.32mm x0.2 Signal #2 Info : 30M x 0.32mm x 0.50µm

Compound	RT#1	RT#2	Resp#1	Resp#2	ng/ml	ng/ml

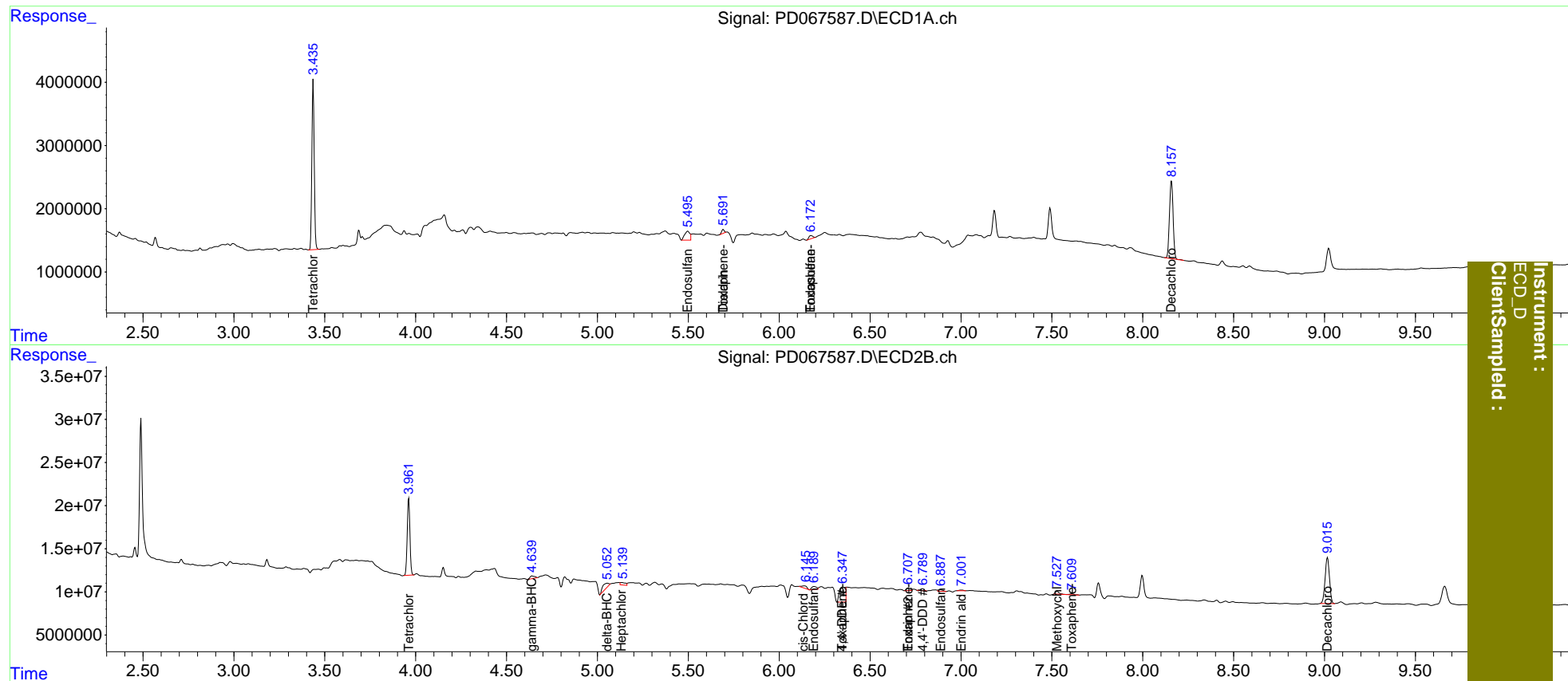
System Monitoring Compounds						
1) SA Tetrachlo...	3.436	3.962	24082356	91647277	10.629	11.308
2) SA Decachlor...	8.158	9.016	17117962	89364527	17.873	17.685
Target Compounds						
2) A alpha-BHC	0.000	4.389f	0	302514	N.D.	<MDL
3) MA gamma-BHC...	0.000	4.640	0	5412088	N.D.	0.549
4) MA Heptachlor	0.000	5.134	0	5762829	N.D.	0.644
5) MB Aldrin	0.000	5.450	0	177039	N.D.	<MDL
7) B delta-BHC	0.000	5.055	0	13244727	N.D.	1.413
8) B Heptachlo...	0.000	5.798f	0	165238	N.D.	<MDL
9) A Endosulfan I	5.497	6.191	2757029	6139989	1.042	0.855
11) B cis-Chlor...	0.000	6.138	0	5370873	N.D.	0.729
12) B 4,4'-DDE	0.000	6.349f	0	40138839	N.D.	5.945
13) MA Dieldrin	5.692	0.000	602742	0	0.214	N.D. #
14) MA Endrin	0.000	6.709f	0	4068040	N.D.	0.729
15) B Endosulfa...	6.175f	6.888	735193	3461312	0.340	0.548 #
16) A 4,4'-DDD	0.000	6.789	0	2625674	N.D.	0.447
18) B Endrin al...	0.000	7.002	0	1229461	N.D.	0.260
20) A Methoxychlor	0.000	7.529	0	4565479	N.D.	1.656
22) Toxaphene-1	5.692	6.349	602742	40138839	35.134	1202.828 #
23) Toxaphene-2	6.175	6.709	735193	4068040	44.414	105.376 #

(f)=RT Delta > 1/2 Window (#)=Amounts differ by > 25% (m)=manual int.

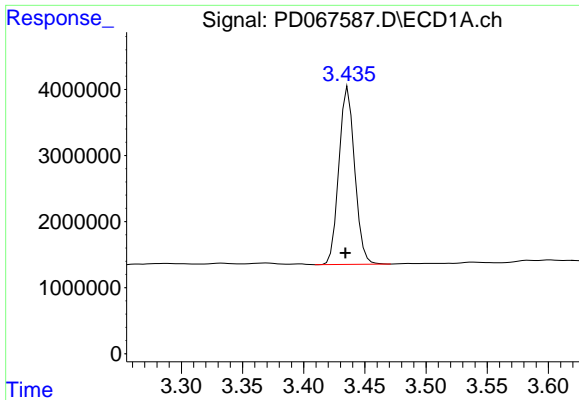
Data Path : Z:\pestpcbsrv\HPCHEM1\ECD_D\Data\PD010422\
 Data File : PD067587.D
 Signal(s) : Signal #1: ECD1A.ch Signal #2: ECD2B.ch
 Acq On : 04 Jan 2022 15:07
 Operator : AR\AJ
 Sample : M5246-01
 Misc :
 ALS Vial : 11 Sample Multiplier: 1

Integration File signal 1: autoint1.e
 Integration File signal 2: autoint2.e
 Quant Time: Jan 05 00:17:28 2022
 Quant Method : Z:\pestpcbsrv\HPCHEM1\ECD_D\Method\PD122921CLP.M
 Quant Title : GC Extractables
 QLast Update : Tue Dec 28 14:32:50 2021
 Response via : Initial Calibration
 Integrator: ChemStation

Volume Inj. : 1 µl
 Signal #1 Phase : ZB-MR2 Signal #2 Phase: ZB-MR1
 Signal #1 Info : 30M x 0.32mm x0.2 Signal #2 Info : 30M x 0.32mm x 0.50µm

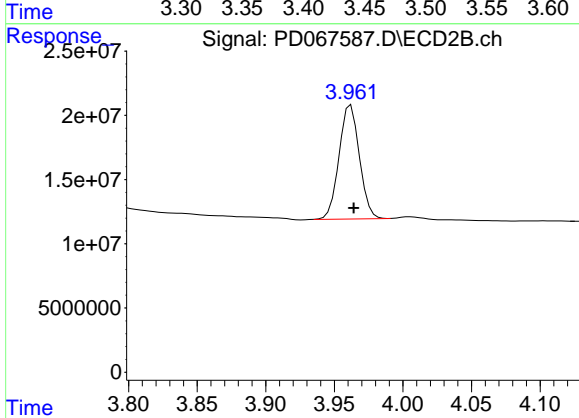


Instrument : ECD_D
 ClientSampled :

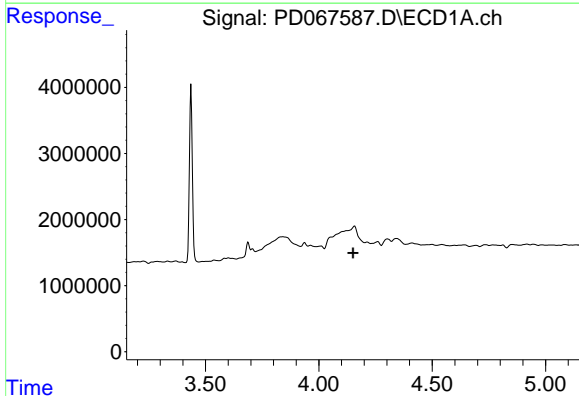


#1 Tetrachloro-m-xylene
 R.T.: 3.436 min
 Delta R.T.: 0.002 min
 Response: 24082356
 Conc: 10.63 ng/ml

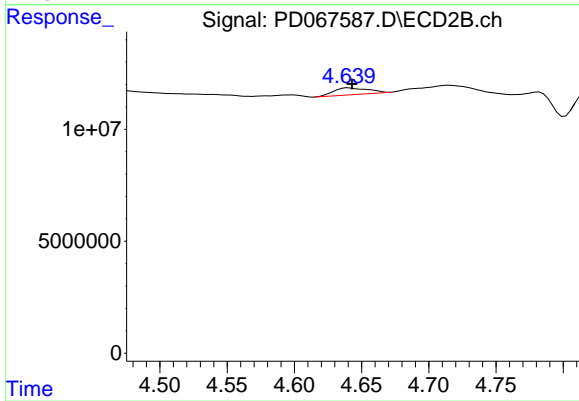
Instrument :
 ECD_D
 ClientSampleId :



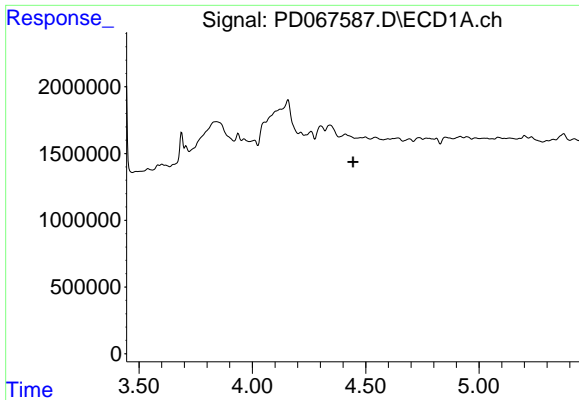
#1 Tetrachloro-m-xylene
 R.T.: 3.962 min
 Delta R.T.: -0.002 min
 Response: 91647277
 Conc: 11.31 ng/ml



#3 gamma-BHC (Lindane)
 R.T.: 0.000 min
 Exp R.T. : 4.151 min
 Response: 0
 Conc: N.D.



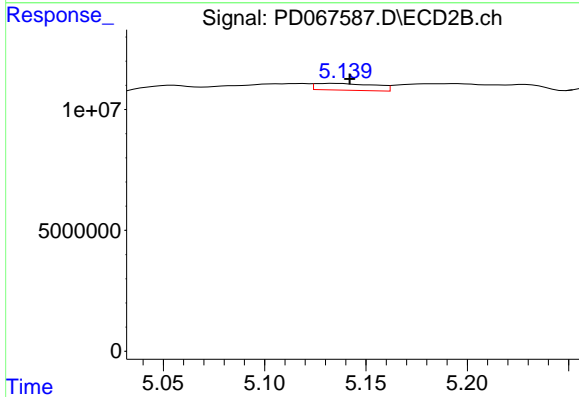
#3 gamma-BHC (Lindane)
 R.T.: 4.640 min
 Delta R.T.: -0.003 min
 Response: 5412088
 Conc: 0.55 ng/ml



#4 Heptachlor

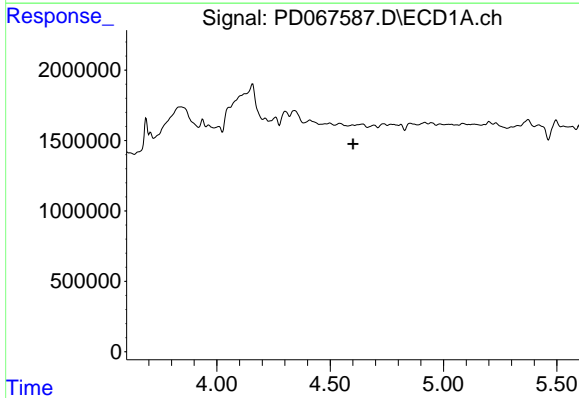
R.T.: 0.000 min
 Exp R.T. : 4.444 min
 Response: 0
 Conc: N.D.

Instrument :
 ECD_D
 ClientSampleId :



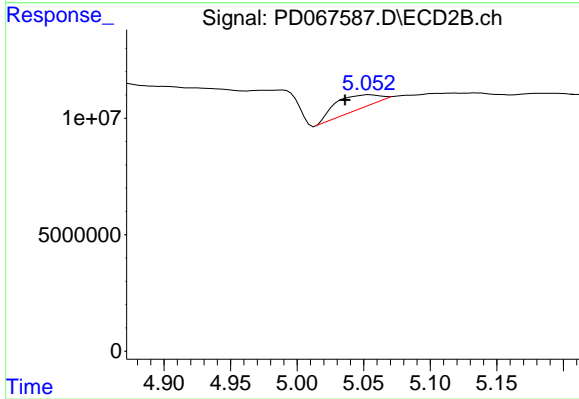
#4 Heptachlor

R.T.: 5.134 min
 Delta R.T.: -0.008 min
 Response: 5762829
 Conc: 0.64 ng/ml



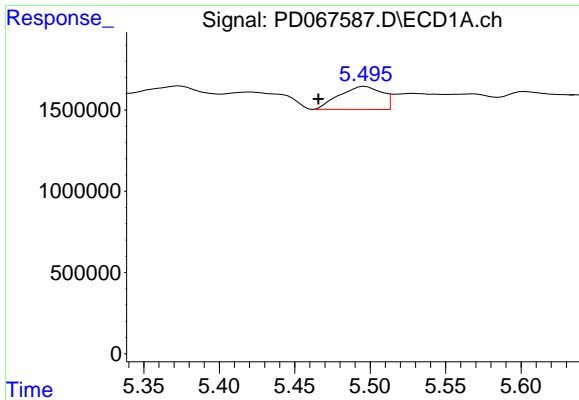
#7 delta-BHC

R.T.: 0.000 min
 Exp R.T. : 4.602 min
 Response: 0
 Conc: N.D.



#7 delta-BHC

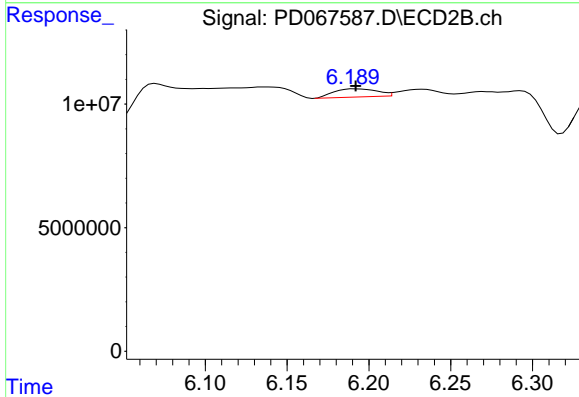
R.T.: 5.055 min
 Delta R.T.: 0.019 min
 Response: 13244727
 Conc: 1.41 ng/ml



#9 Endosulfan I

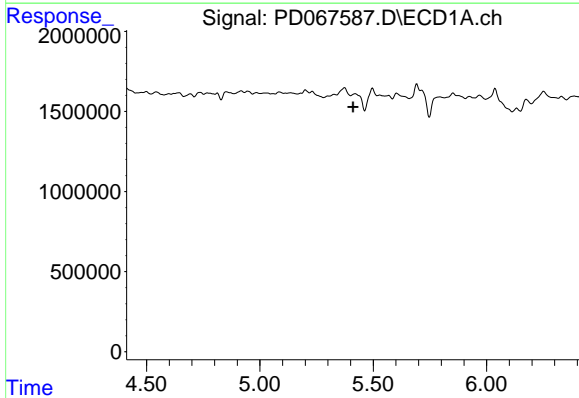
R.T.: 5.497 min
 Delta R.T.: 0.031 min
 Response: 2757029
 Conc: 1.04 ng/ml

Instrument :
 ECD_D
 ClientSampleId :



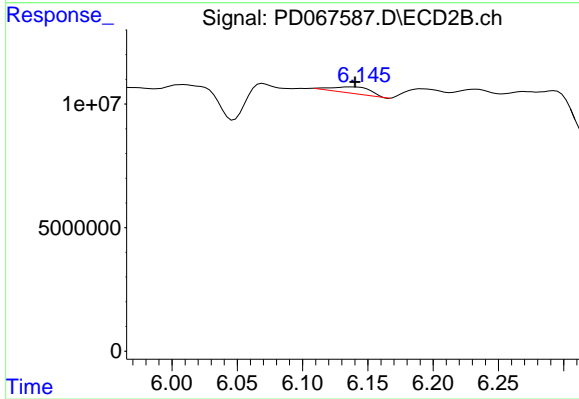
#9 Endosulfan I

R.T.: 6.191 min
 Delta R.T.: -0.001 min
 Response: 6139989
 Conc: 0.85 ng/ml



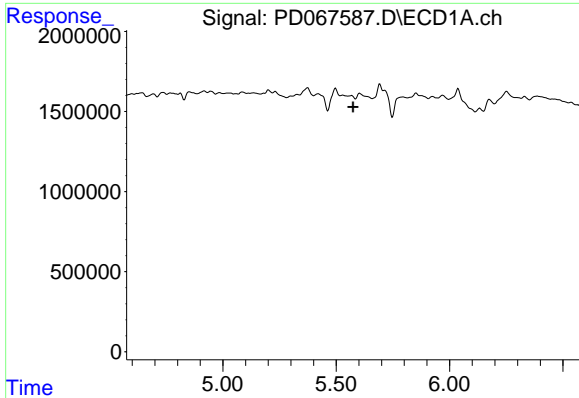
#11 cis-Chlordane

R.T.: 0.000 min
 Exp R.T. : 5.411 min
 Response: 0
 Conc: N.D.



#11 cis-Chlordane

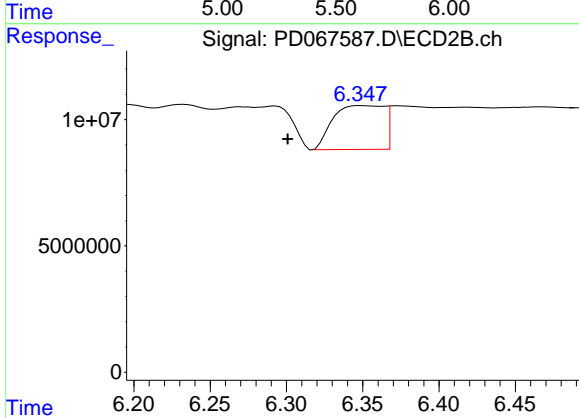
R.T.: 6.138 min
 Delta R.T.: -0.002 min
 Response: 5370873
 Conc: 0.73 ng/ml



#12 4,4'-DDE

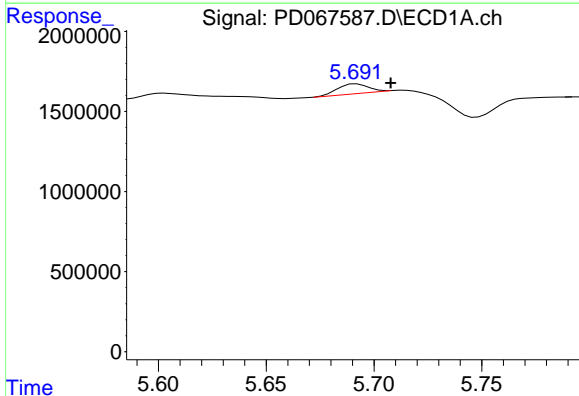
R.T.: 0.000 min
 Exp R.T.: 5.575 min
 Response: 0
 Conc: N.D.

Instrument :
 ECD_D
 ClientSampleId :



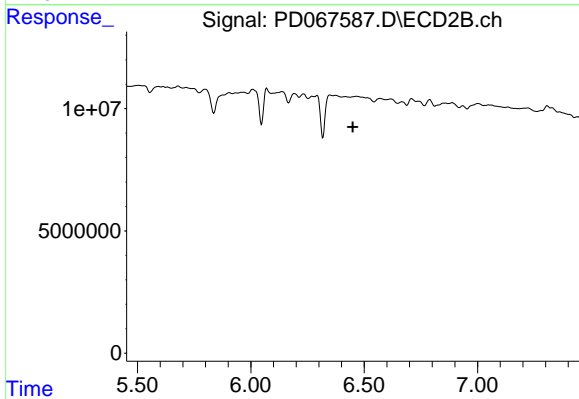
#12 4,4'-DDE

R.T.: 6.349 min
 Delta R.T.: 0.048 min
 Response: 40138839
 Conc: 5.94 ng/ml



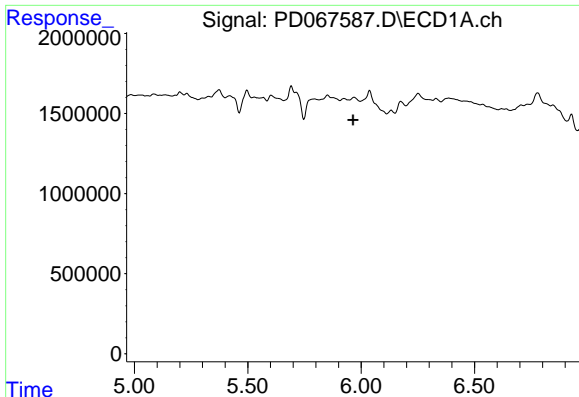
#13 Dieldrin

R.T.: 5.692 min
 Delta R.T.: -0.016 min
 Response: 602742
 Conc: 0.21 ng/ml



#13 Dieldrin

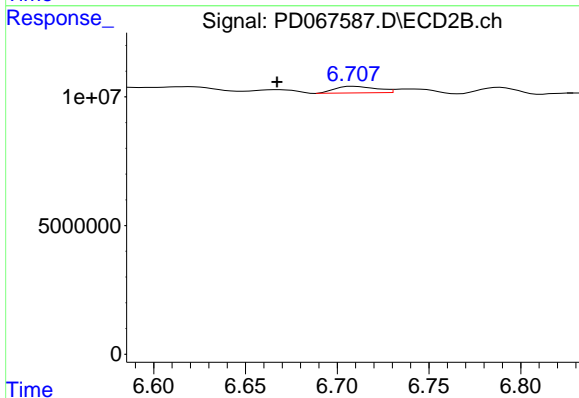
R.T.: 0.000 min
 Exp R.T.: 6.450 min
 Response: 0
 Conc: N.D.



#14 Endrin

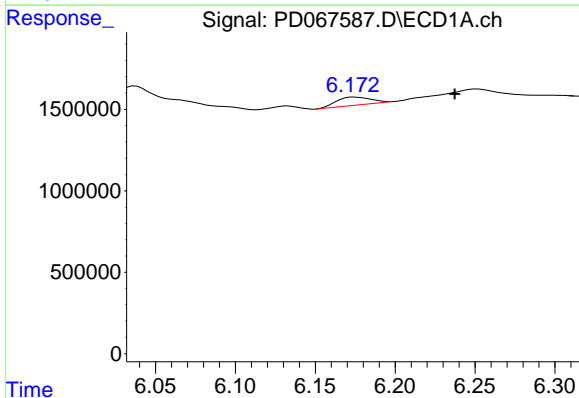
R.T.: 0.000 min
 Exp R.T.: 5.965 min
 Response: 0
 Conc: N.D.

Instrument :
 ECD_D
 ClientSampleId :



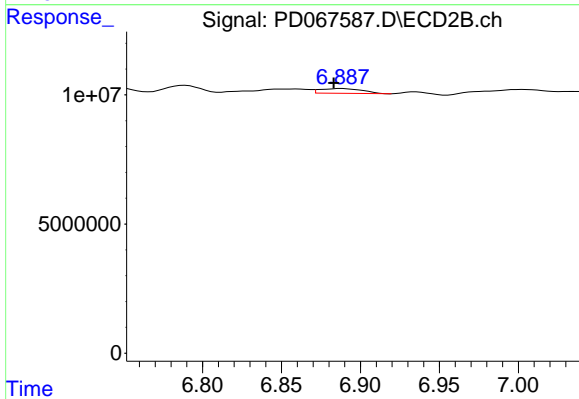
#14 Endrin

R.T.: 6.709 min
 Delta R.T.: 0.042 min
 Response: 4068040
 Conc: 0.73 ng/ml



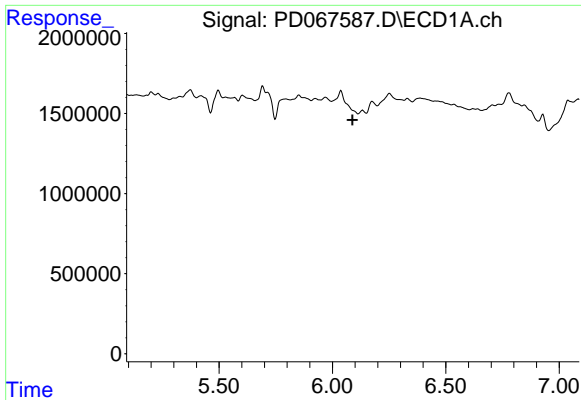
#15 Endosulfan II

R.T.: 6.175 min
 Delta R.T.: -0.063 min
 Response: 735193
 Conc: 0.34 ng/ml



#15 Endosulfan II

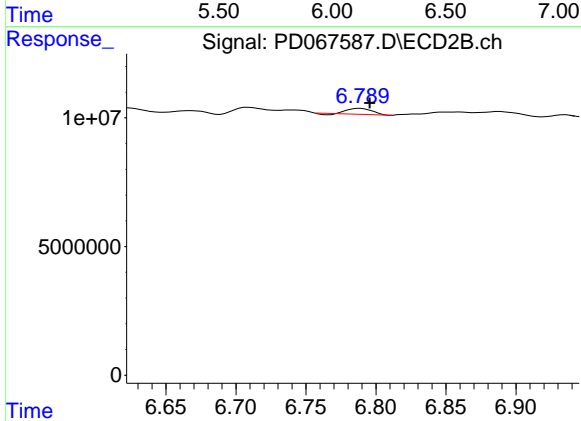
R.T.: 6.888 min
 Delta R.T.: 0.005 min
 Response: 3461312
 Conc: 0.55 ng/ml



#16 4,4'-DDD

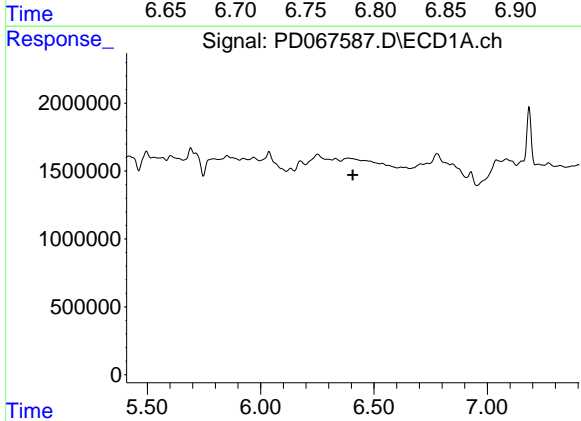
R.T.: 0.000 min
 Exp R.T.: 6.089 min
 Response: 0
 Conc: N.D.

Instrument :
 ECD_D
 ClientSampleId :



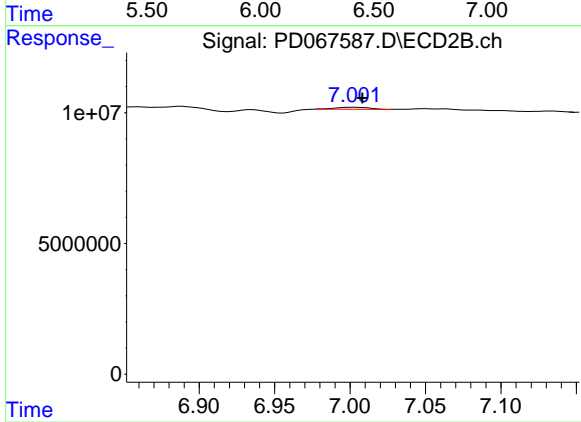
#16 4,4'-DDD

R.T.: 6.789 min
 Delta R.T.: -0.007 min
 Response: 2625674
 Conc: 0.45 ng/ml



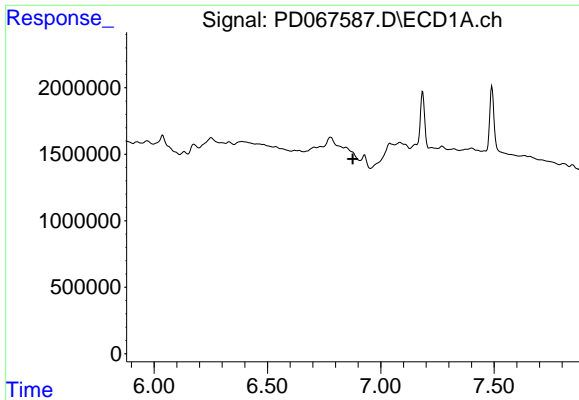
#18 Endrin aldehyde

R.T.: 0.000 min
 Exp R.T.: 6.407 min
 Response: 0
 Conc: N.D.



#18 Endrin aldehyde

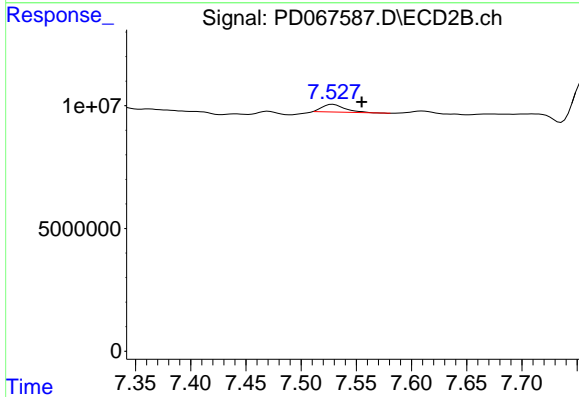
R.T.: 7.002 min
 Delta R.T.: -0.006 min
 Response: 1229461
 Conc: 0.26 ng/ml



#20 Methoxychlor

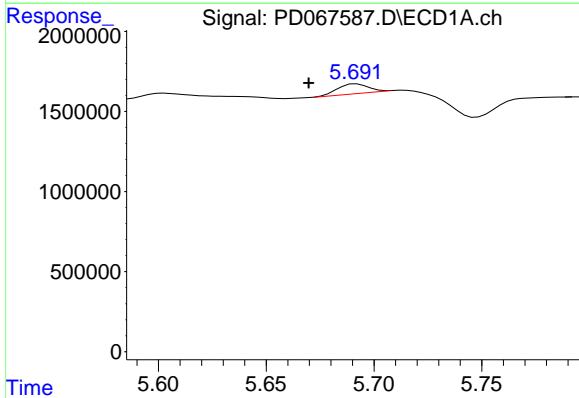
R.T.: 0.000 min
 Exp R.T.: 6.876 min
 Response: 0
 Conc: N.D.

Instrument :
 ECD_D
 ClientSampleId :



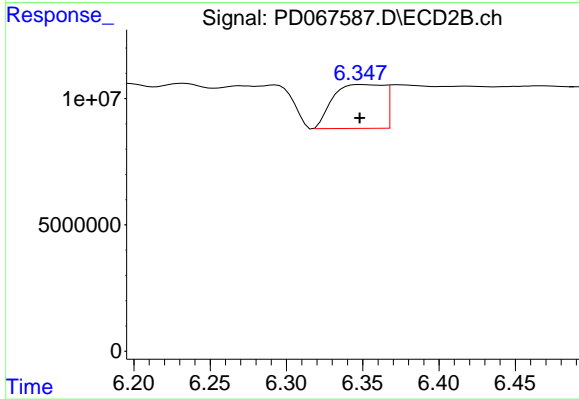
#20 Methoxychlor

R.T.: 7.529 min
 Delta R.T.: -0.026 min
 Response: 4565479
 Conc: 1.66 ng/ml



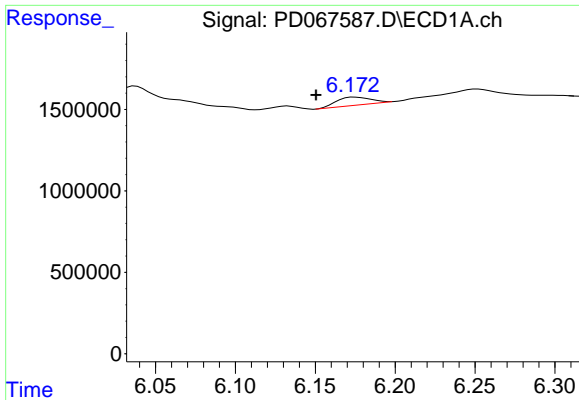
#22 Toxaphene-1

R.T.: 5.692 min
 Delta R.T.: 0.022 min
 Response: 602742
 Conc: 35.13 ng/ml



#22 Toxaphene-1

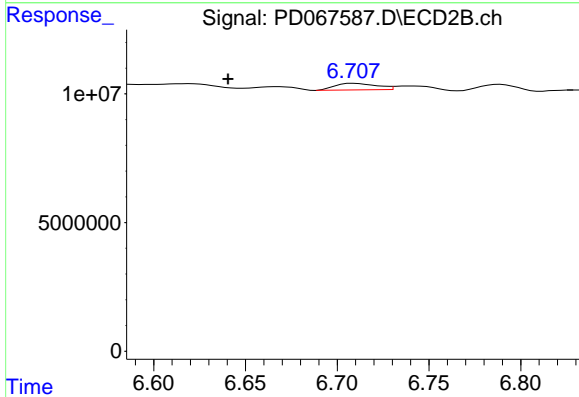
R.T.: 6.349 min
 Delta R.T.: 0.001 min
 Response: 40138839
 Conc: 1202.83 ng/ml



#23 Toxaphene-2

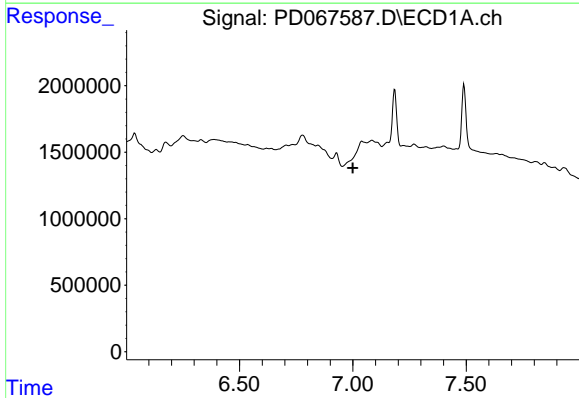
R.T.: 6.175 min
 Delta R.T.: 0.024 min
 Response: 735193
 Conc: 44.41 ng/ml

Instrument :
 ECD_D
 ClientSampleId :



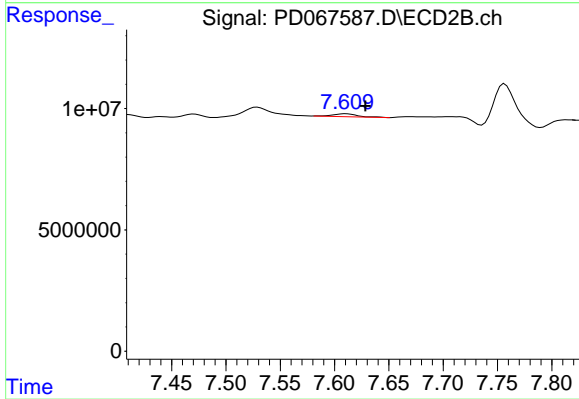
#23 Toxaphene-2

R.T.: 6.709 min
 Delta R.T.: 0.069 min
 Response: 4068040
 Conc: 105.38 ng/ml



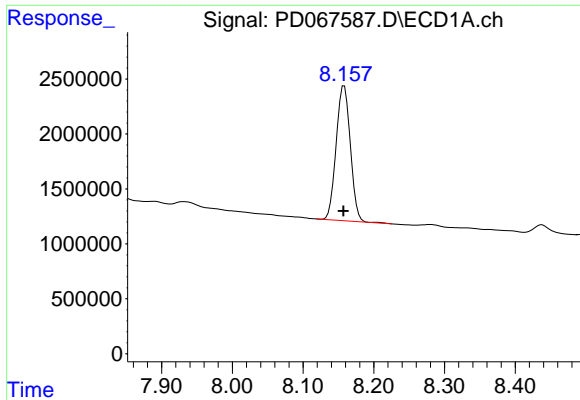
#26 Toxaphene-5

R.T.: 7.040 min
 Delta R.T.: 0.040 min
 Response: -2446619
 Conc: N.D.



#26 Toxaphene-5

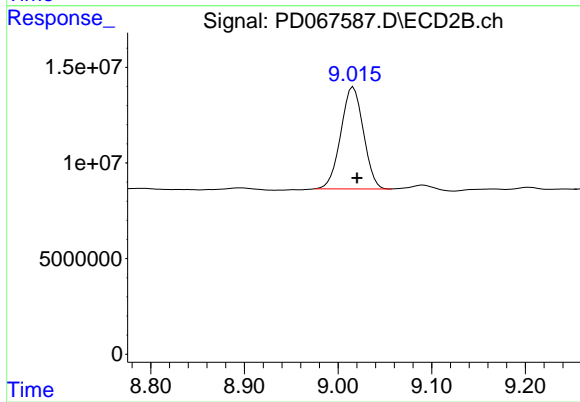
R.T.: 7.610 min
 Delta R.T.: -0.018 min
 Response: 1786640
 Conc: 23.43 ng/ml



#27 Decachlorobiphenyl

R.T.: 8.158 min
Delta R.T.: 0.000 min
Response: 17117962
Conc: 17.87 ng/ml

Instrument :
ECD_D
ClientSampleId :



#27 Decachlorobiphenyl

R.T.: 9.016 min
Delta R.T.: -0.004 min
Response: 89364527
Conc: 17.69 ng/ml