

Data Path : Z:\pestpcbsrv\HPCHEM1\ECD\_D\Data\PD010622\  
 Data File : PD067626.D  
 Signal(s) : Signal #1: ECD1A.ch Signal #2: ECD2B.ch  
 Acq On : 05 Jan 2022 12:19  
 Operator : AR\AJ  
 Sample : PB141835BSD  
 Misc :  
 ALS Vial : 7 Sample Multiplier: 1

Instrument :  
 ECD\_D  
 ClientSampleId :

Integration File signal 1: autoint1.e  
 Integration File signal 2: autoint2.e  
 Quant Time: Jan 06 00:11:20 2022  
 Quant Method : Z:\pestpcbsrv\HPCHEM1\ECD\_L\methods\PD122821.M  
 Quant Title : GC Extractables  
 QLast Update : Tue Dec 28 03:00:50 2021  
 Response via : Initial Calibration  
 Integrator: ChemStation

Volume Inj. : 1 µl  
 Signal #1 Phase : ZB-MR2 Signal #2 Phase: ZB-MR1  
 Signal #1 Info : 30M x 0.32mm x0.2 Signal #2 Info : 30M x 0.32mm x0.5µm

	Compound	RT#1	RT#2	Resp#1	Resp#2	ng/ml	ng/ml
-----							
System Monitoring Compounds							
1)	SA Tetrachlo...	3.433	3.962	40380987	158.7E6	22.221	24.051
28)	SA Decachlor...	8.156	9.018	19164485	104.0E6	21.575	21.892
Target Compounds							
2)	A alpha-BHC	3.870	4.356	164.2E6	518.2E6	56.931	55.855
3)	MA gamma-BHC...	4.151	4.641	149.2E6	473.5E6	56.081	56.184
4)	MA Heptachlor	4.444	5.141	150.0E6	429.2E6	55.162	55.941
5)	MB Aldrin	4.689	5.444	151.9E6	401.4E6	54.897	54.137
6)	B beta-BHC	4.400	4.820	61006552	219.6E6	55.511	56.318
7)	B delta-BHC	4.602	5.035	145.1E6	450.6E6	56.242	60.127
8)	B Heptachlo...	5.130	5.833	136.0E6	318.0E6	55.178	59.569
9)	A Endosulfan I	5.465	6.190	124.9E6	343.5E6	56.147	56.735
10)	B gamma-Chl...	5.353	6.068	135.8E6	362.6E6	54.927	55.891
11)	B alpha-Chl...	5.411	6.138	133.4E6	360.0E6	55.180	55.535
12)	B 4,4'-DDE	5.575	6.299	124.3E6	354.8E6	56.160	57.598
13)	MA Dieldrin	5.708	6.448	132.0E6	364.2E6	54.668	54.830
14)	MA Endrin	5.964	6.668	105.8E6	291.3E6	50.387	52.553
15)	B Endosulfa...	6.237	6.882	99335627	308.2E6	49.535	51.856
16)	A 4,4'-DDD	6.090	6.794	102.5E6	309.2E6	59.668	61.766
17)	MA 4,4'-DDT	6.329	7.091	91814218	300.6E6	56.189	56.172
18)	B Endrin al...	6.406	7.007	79783123	256.0E6	52.503	56.750
19)	B Endosulfa...	6.619	7.230	89581186	305.8E6	55.487	55.950
20)	A Methoxychlor	6.876	7.554	44984216	157.2E6	52.992	54.175
21)	B Endrin ke...	7.110	7.703	97917136	358.1E6	57.214	57.069
22)	Mirex	7.290	8.149	64350791	237.9E6	53.800	54.786
23)	Chlordane-1	4.324f	0.000	864193	0	10.944	N.D. #
24)	Chlordane-2	0.000	5.444f	0	401.4E6	N.D.	1462.960 #
25)	Chlordane-3	5.353	6.068	135.8E6	362.6E6	509.296	376.428 #
26)	Chlordane-4	5.411	6.138	133.4E6	360.0E6	606.304	315.319 #
27)	Chlordane-5	6.237	0.000	99335627	0	1147.443	N.D. #

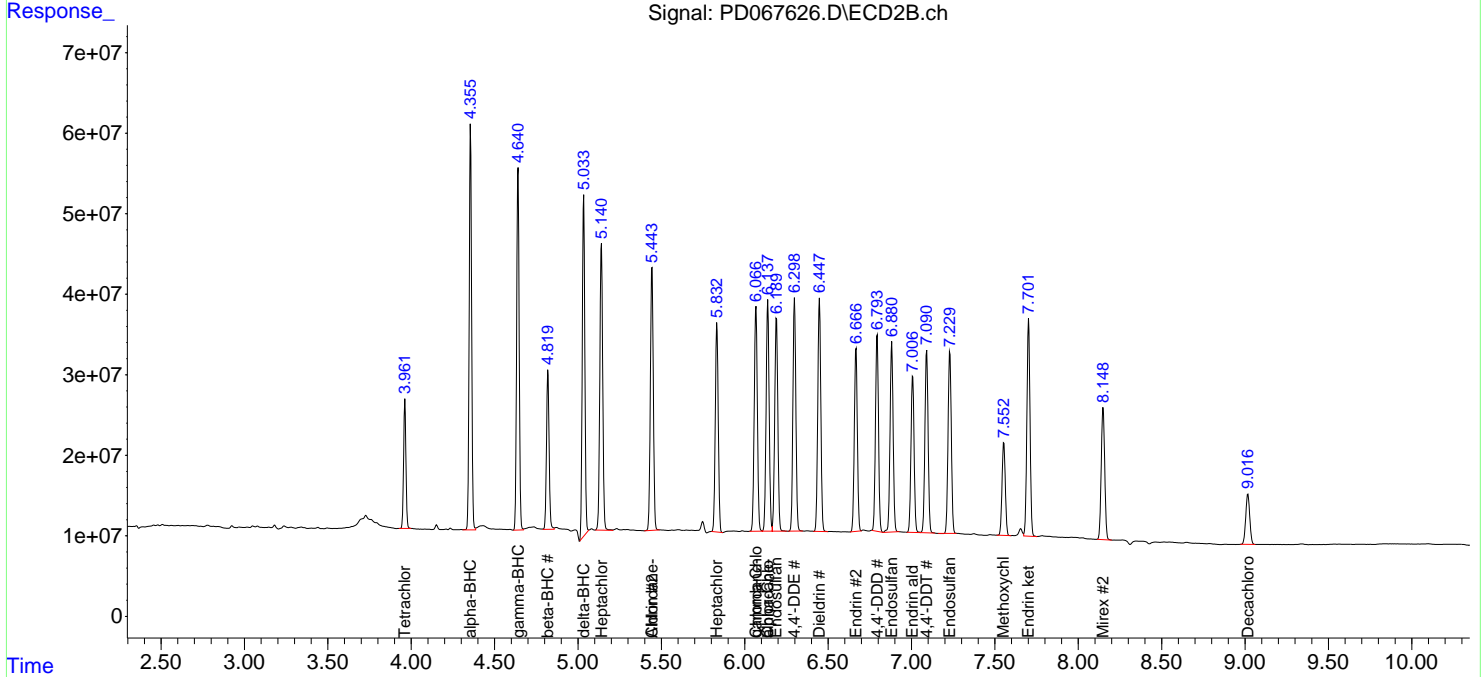
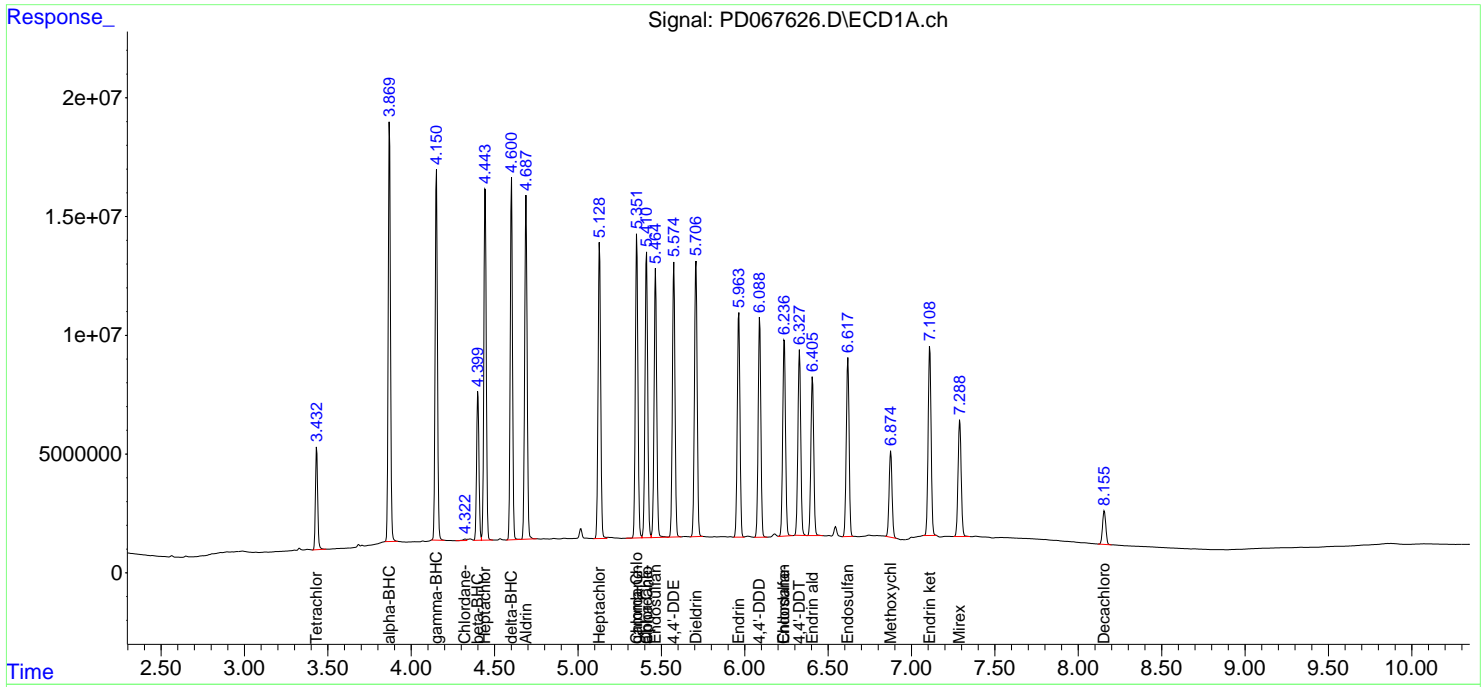
(f)=RT Delta > 1/2 Window (#)=Amounts differ by > 25% (m)=manual int.

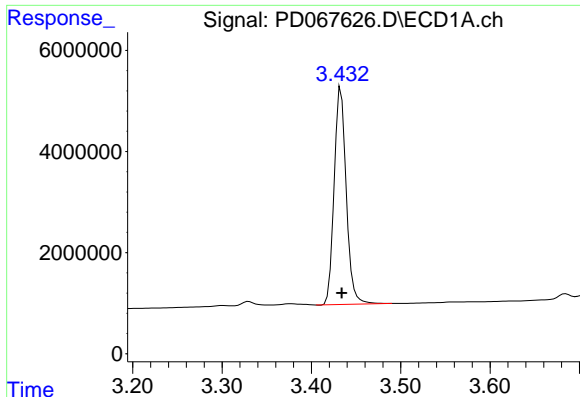
Data Path : Z:\pestpcbsrv\HPCHEM1\ECD\_D\Data\PD010622\  
 Data File : PD067626.D  
 Signal(s) : Signal #1: ECD1A.ch Signal #2: ECD2B.ch  
 Acq On : 05 Jan 2022 12:19  
 Operator : AR\AJ  
 Sample : PB141835BSD  
 Misc :  
 ALS Vial : 7 Sample Multiplier: 1

Instrument :  
 ECD\_D  
 ClientSampleId :

Integration File signal 1: autoint1.e  
 Integration File signal 2: autoint2.e  
 Quant Time: Jan 06 00:11:20 2022  
 Quant Method : Z:\pestpcbsrv\HPCHEM1\ECD\_L\methods\PD122821.M  
 Quant Title : GC Extractables  
 QLast Update : Tue Dec 28 03:00:50 2021  
 Response via : Initial Calibration  
 Integrator: ChemStation

Volume Inj. : 1 µl  
 Signal #1 Phase : ZB-MR2 Signal #2 Phase: ZB-MR1  
 Signal #1 Info : 30M x 0.32mm x0.2 Signal #2 Info : 30M x 0.32mm x0.5µm

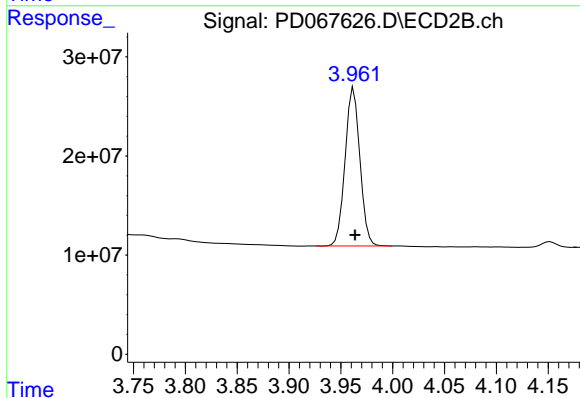




#1 Tetrachloro-m-xylene

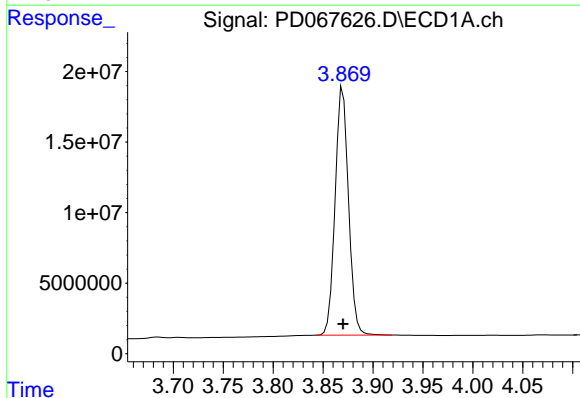
R.T.: 3.433 min  
 Delta R.T.: 0.000 min  
 Response: 40380987  
 Conc: 22.22 ng/ml

Instrument :  
 ECD\_D  
 ClientSampleId :



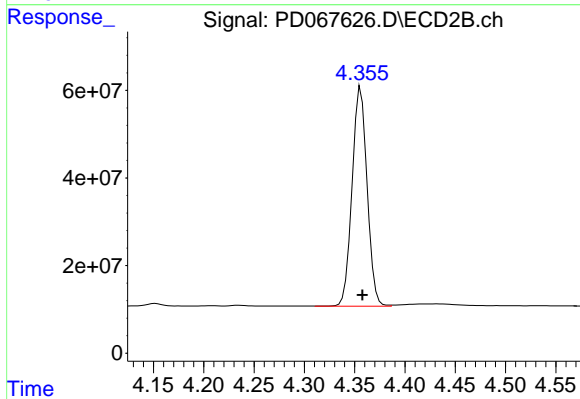
#1 Tetrachloro-m-xylene

R.T.: 3.962 min  
 Delta R.T.: -0.001 min  
 Response: 158692225  
 Conc: 24.05 ng/ml



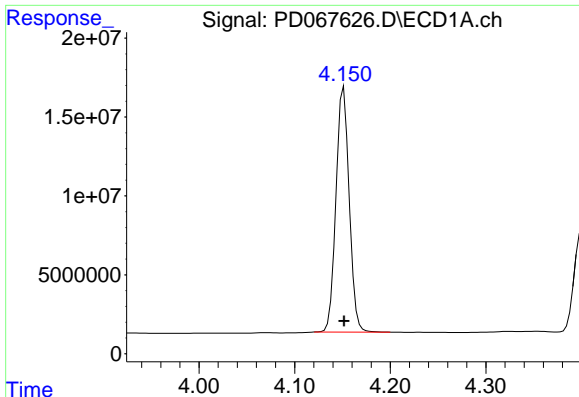
#2 alpha-BHC

R.T.: 3.870 min  
 Delta R.T.: 0.000 min  
 Response: 164192778  
 Conc: 56.93 ng/ml



#2 alpha-BHC

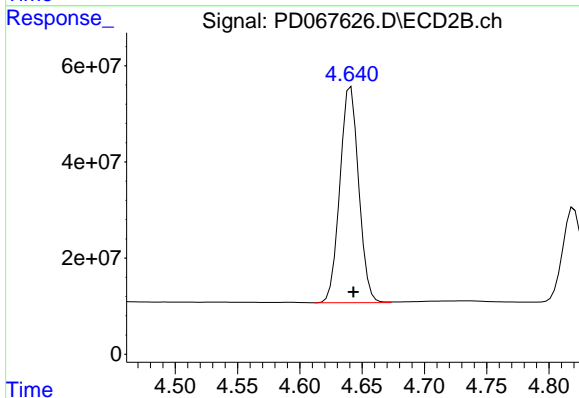
R.T.: 4.356 min  
 Delta R.T.: -0.001 min  
 Response: 518230346  
 Conc: 55.85 ng/ml



#3 gamma-BHC (Lindane)

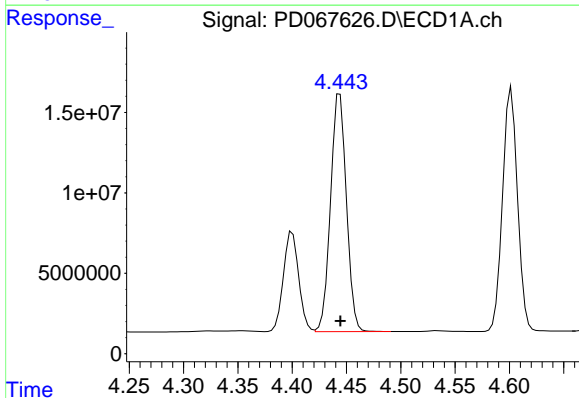
R.T.: 4.151 min  
 Delta R.T.: 0.000 min  
 Response: 149155593  
 Conc: 56.08 ng/ml

Instrument :  
 ECD\_D  
 ClientSampleId :



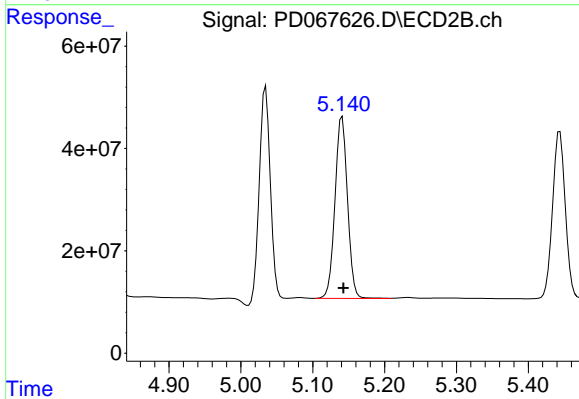
#3 gamma-BHC (Lindane)

R.T.: 4.641 min  
 Delta R.T.: -0.002 min  
 Response: 473505360  
 Conc: 56.18 ng/ml



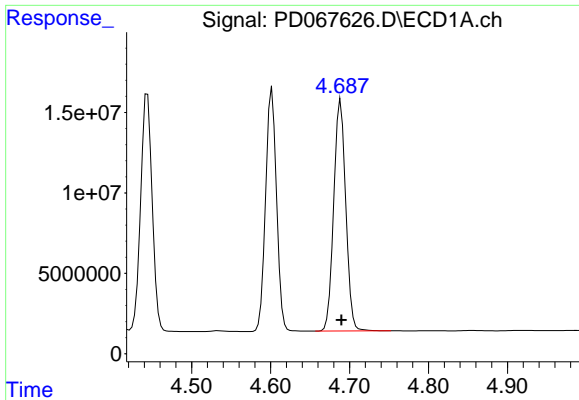
#4 Heptachlor

R.T.: 4.444 min  
 Delta R.T.: 0.000 min  
 Response: 150010478  
 Conc: 55.16 ng/ml



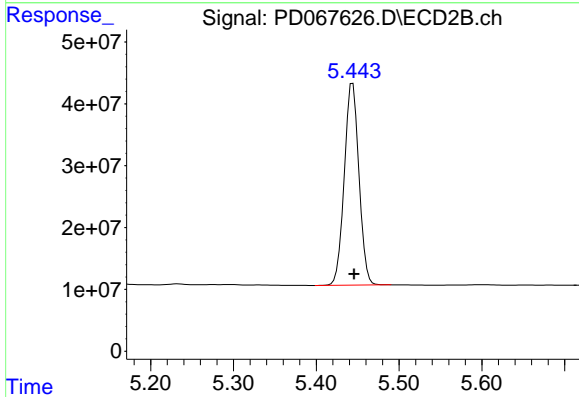
#4 Heptachlor

R.T.: 5.141 min  
 Delta R.T.: -0.001 min  
 Response: 429182054  
 Conc: 55.94 ng/ml

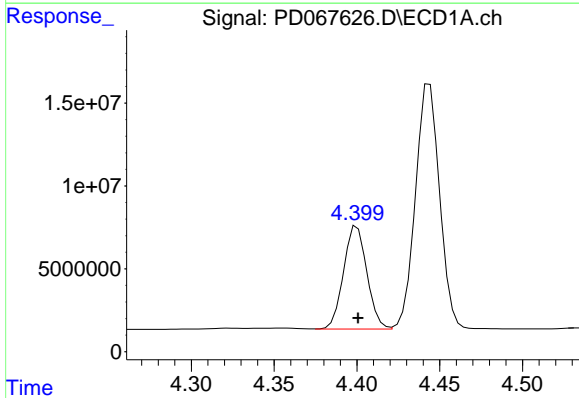


#5 Aldrin  
 R.T.: 4.689 min  
 Delta R.T.: -0.001 min  
 Response: 151945576  
 Conc: 54.90 ng/ml

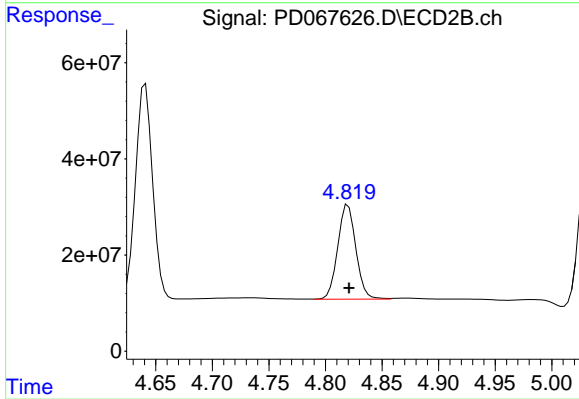
Instrument :  
 ECD\_D  
 ClientSampleId :



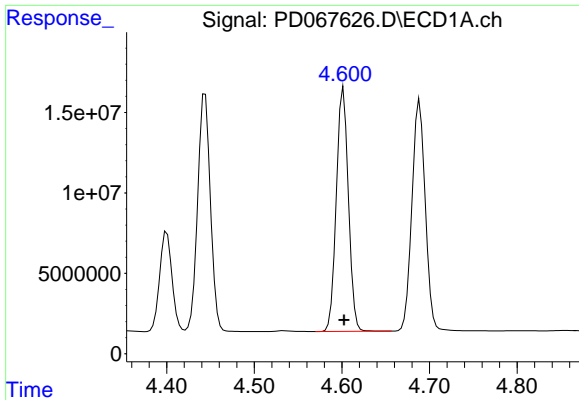
#5 Aldrin  
 R.T.: 5.444 min  
 Delta R.T.: -0.002 min  
 Response: 401417647  
 Conc: 54.14 ng/ml



#6 beta-BHC  
 R.T.: 4.400 min  
 Delta R.T.: 0.000 min  
 Response: 61006552  
 Conc: 55.51 ng/ml



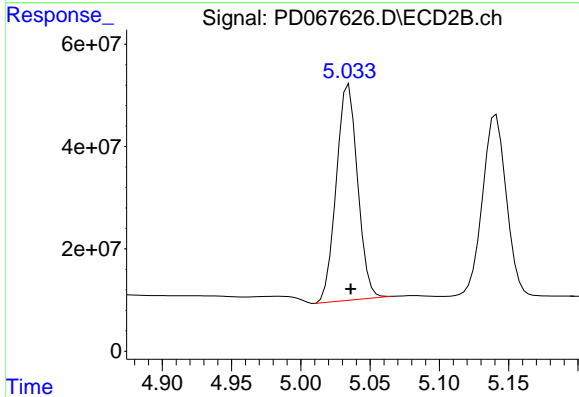
#6 beta-BHC  
 R.T.: 4.820 min  
 Delta R.T.: 0.000 min  
 Response: 219603691  
 Conc: 56.32 ng/ml



#7 delta-BHC

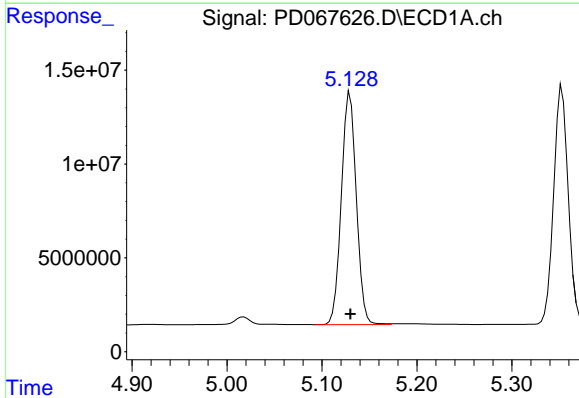
R.T.: 4.602 min  
Delta R.T.: 0.000 min  
Response: 145124424  
Conc: 56.24 ng/ml

Instrument :  
ECD\_D  
ClientSampleId :



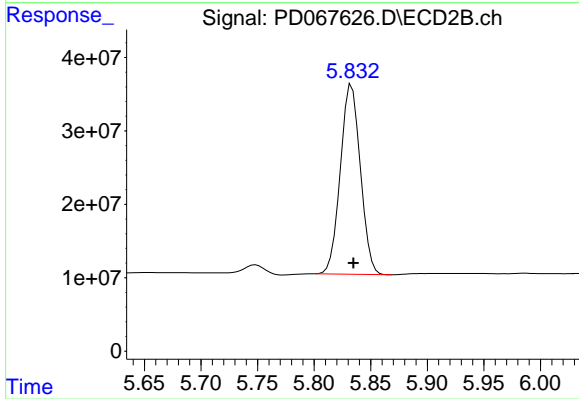
#7 delta-BHC

R.T.: 5.035 min  
Delta R.T.: -0.001 min  
Response: 450615304  
Conc: 60.13 ng/ml



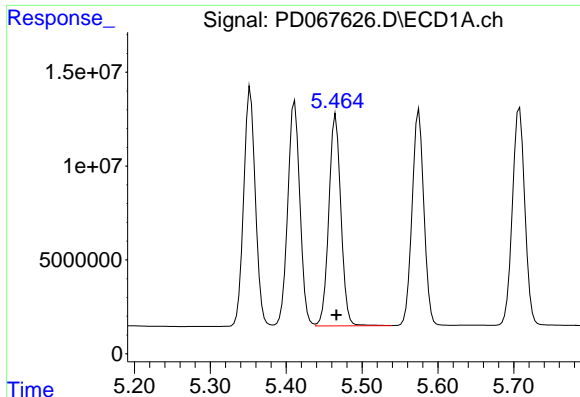
#8 Heptachlor epoxide

R.T.: 5.130 min  
Delta R.T.: 0.000 min  
Response: 135972116  
Conc: 55.18 ng/ml



#8 Heptachlor epoxide

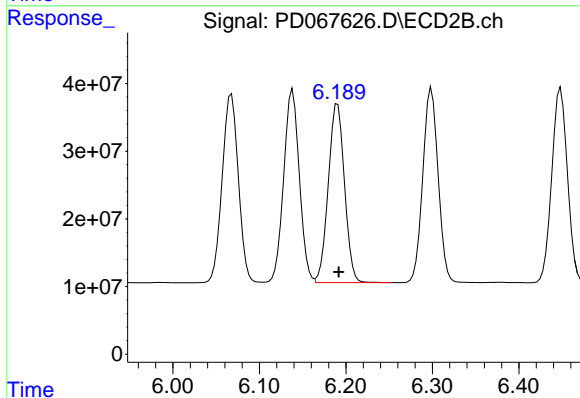
R.T.: 5.833 min  
Delta R.T.: -0.002 min  
Response: 317959568  
Conc: 59.57 ng/ml



#9 Endosulfan I

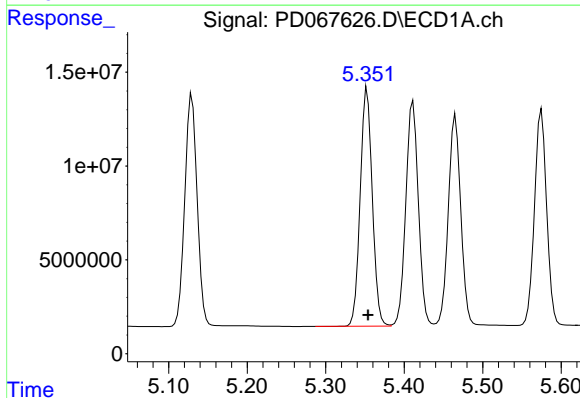
R.T.: 5.465 min  
 Delta R.T.: 0.000 min  
 Response: 124921137  
 Conc: 56.15 ng/ml

Instrument :  
 ECD\_D  
 ClientSampleId :



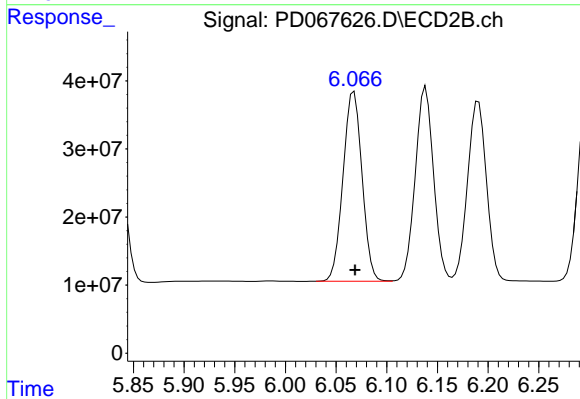
#9 Endosulfan I

R.T.: 6.190 min  
 Delta R.T.: -0.001 min  
 Response: 343475626  
 Conc: 56.74 ng/ml



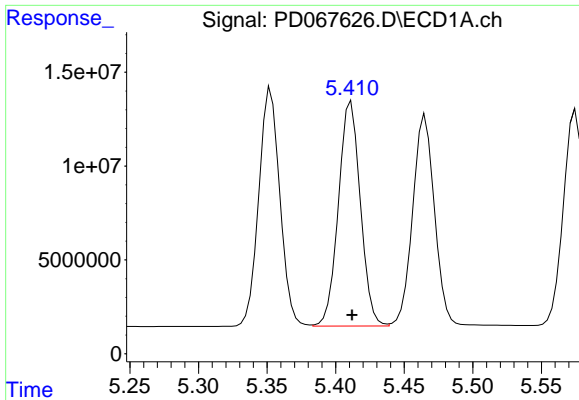
#10 gamma-Chlordane

R.T.: 5.353 min  
 Delta R.T.: 0.000 min  
 Response: 135794482  
 Conc: 54.93 ng/ml



#10 gamma-Chlordane

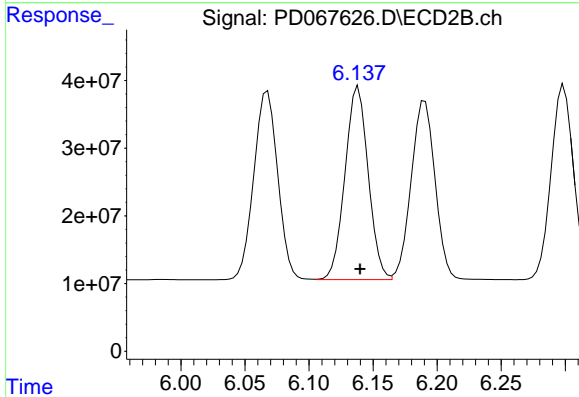
R.T.: 6.068 min  
 Delta R.T.: 0.000 min  
 Response: 362577676  
 Conc: 55.89 ng/ml



#11 alpha-Chlordane

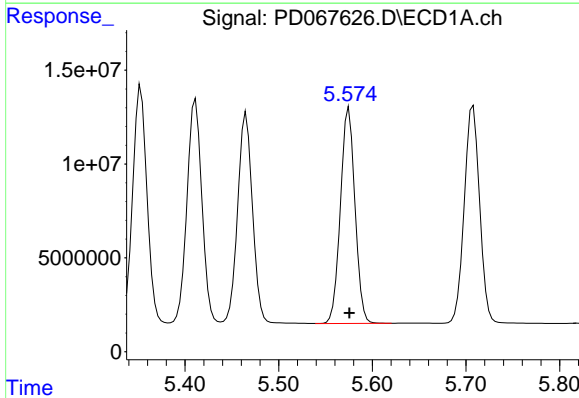
R.T.: 5.411 min  
 Delta R.T.: 0.000 min  
 Response: 133416859  
 Conc: 55.18 ng/ml

Instrument :  
 ECD\_D  
 ClientSampleId :



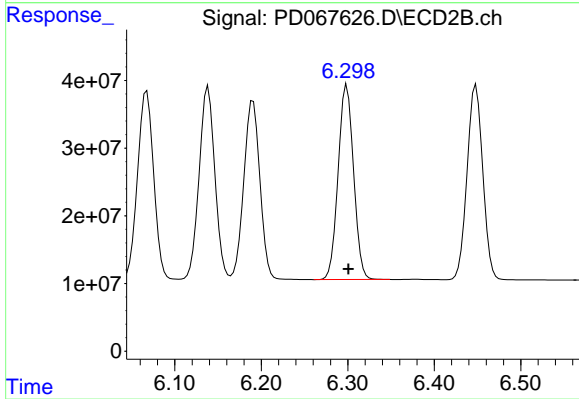
#11 alpha-Chlordane

R.T.: 6.138 min  
 Delta R.T.: -0.001 min  
 Response: 359997948  
 Conc: 55.53 ng/ml



#12 4,4'-DDE

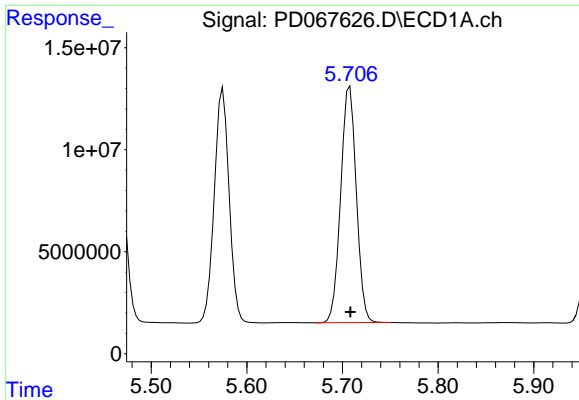
R.T.: 5.575 min  
 Delta R.T.: 0.000 min  
 Response: 124330574  
 Conc: 56.16 ng/ml



#12 4,4'-DDE

R.T.: 6.299 min  
 Delta R.T.: -0.001 min  
 Response: 354780218  
 Conc: 57.60 ng/ml

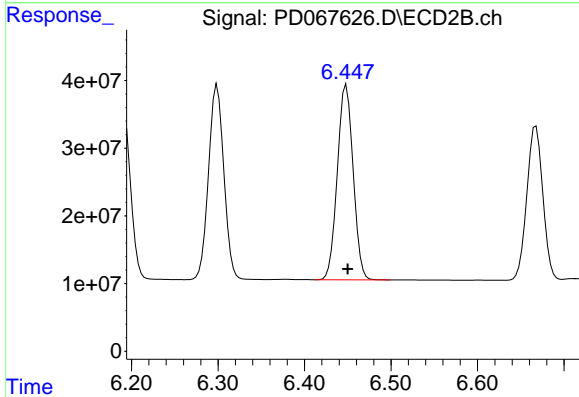




#13 Dieldrin

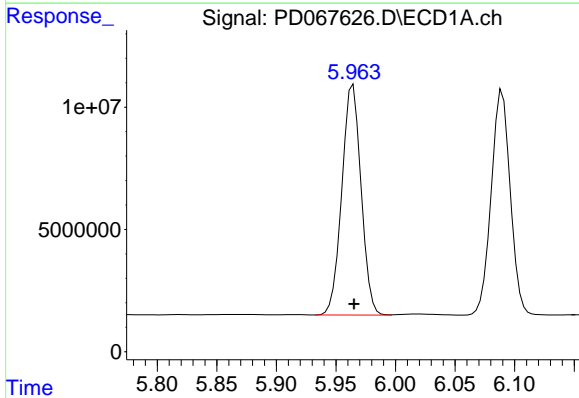
R.T.: 5.708 min  
 Delta R.T.: 0.000 min  
 Response: 131986657  
 Conc: 54.67 ng/ml

Instrument :  
 ECD\_D  
 ClientSampleId :



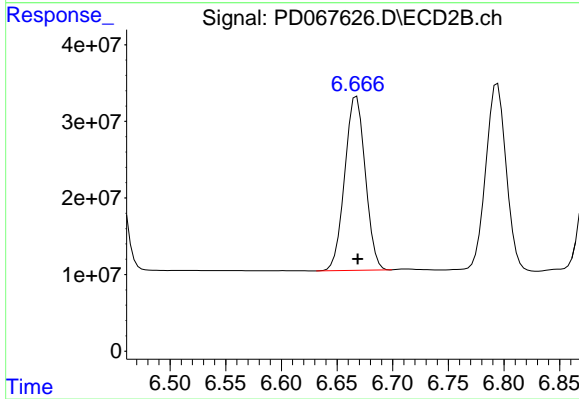
#13 Dieldrin

R.T.: 6.448 min  
 Delta R.T.: -0.001 min  
 Response: 364227218  
 Conc: 54.83 ng/ml



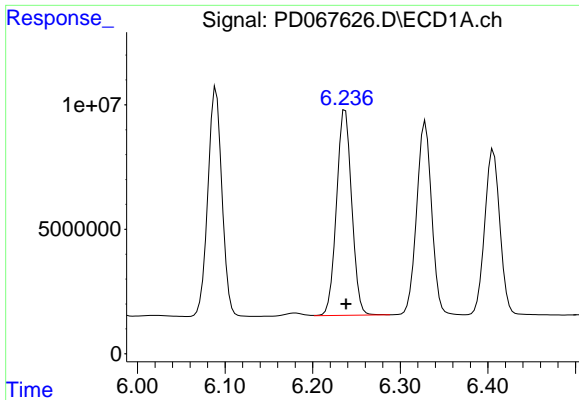
#14 Endrin

R.T.: 5.964 min  
 Delta R.T.: 0.000 min  
 Response: 105846428  
 Conc: 50.39 ng/ml



#14 Endrin

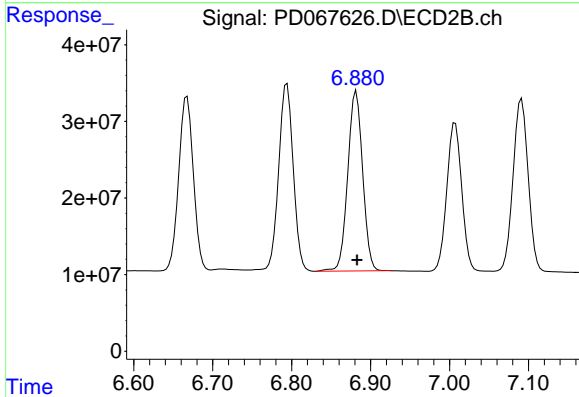
R.T.: 6.668 min  
 Delta R.T.: 0.000 min  
 Response: 291343632  
 Conc: 52.55 ng/ml



#15 Endosulfan II

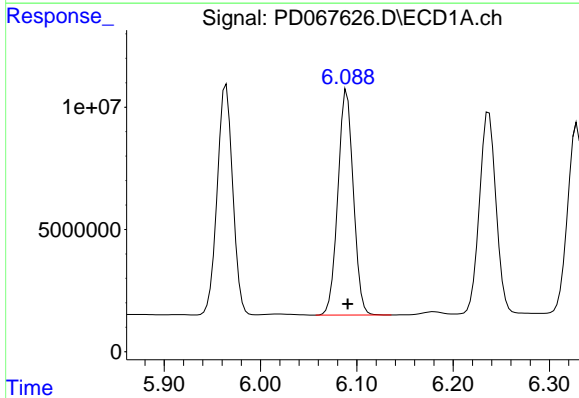
R.T.: 6.237 min  
Delta R.T.: 0.000 min  
Response: 99335627  
Conc: 49.53 ng/ml

Instrument :  
ECD\_D  
ClientSampleId :



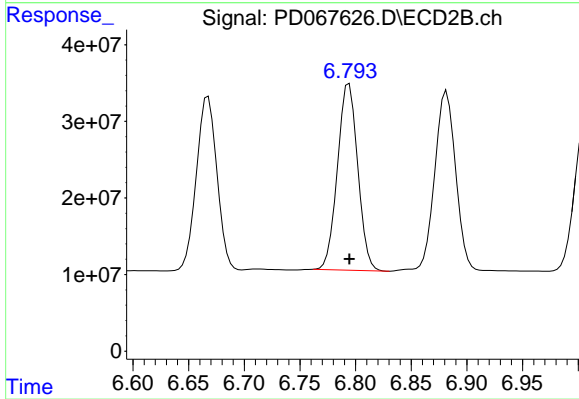
#15 Endosulfan II

R.T.: 6.882 min  
Delta R.T.: -0.001 min  
Response: 308212011  
Conc: 51.86 ng/ml



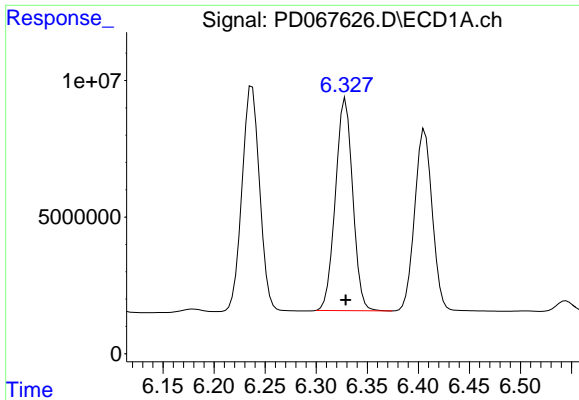
#16 4,4'-DDD

R.T.: 6.090 min  
Delta R.T.: 0.000 min  
Response: 102509879  
Conc: 59.67 ng/ml



#16 4,4'-DDD

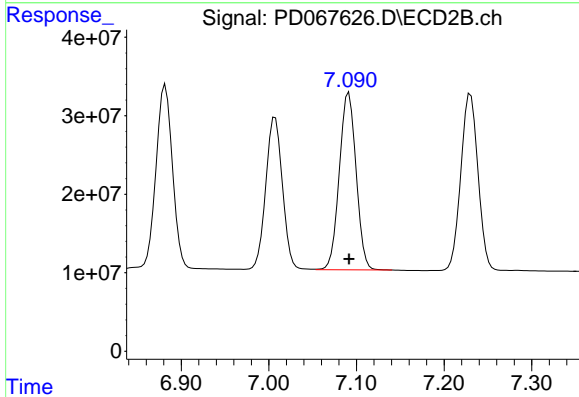
R.T.: 6.794 min  
Delta R.T.: 0.000 min  
Response: 309189076  
Conc: 61.77 ng/ml



#17 4,4'-DDT

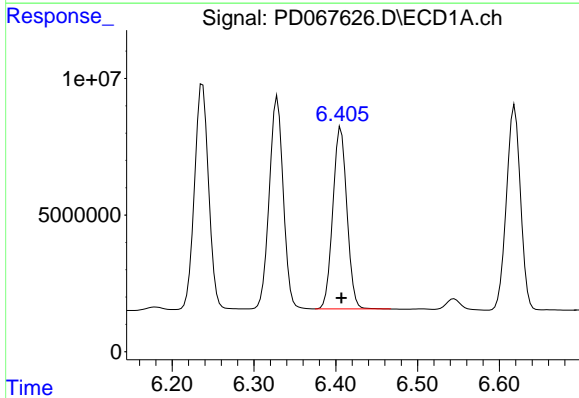
R.T.: 6.329 min  
 Delta R.T.: 0.000 min  
 Response: 91814218  
 Conc: 56.19 ng/ml

Instrument :  
 ECD\_D  
 ClientSampleId :



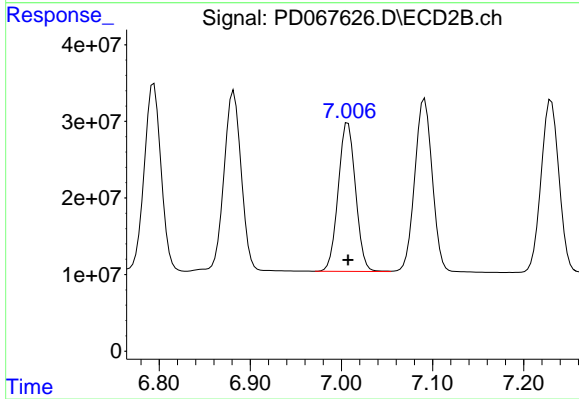
#17 4,4'-DDT

R.T.: 7.091 min  
 Delta R.T.: 0.000 min  
 Response: 300572786  
 Conc: 56.17 ng/ml



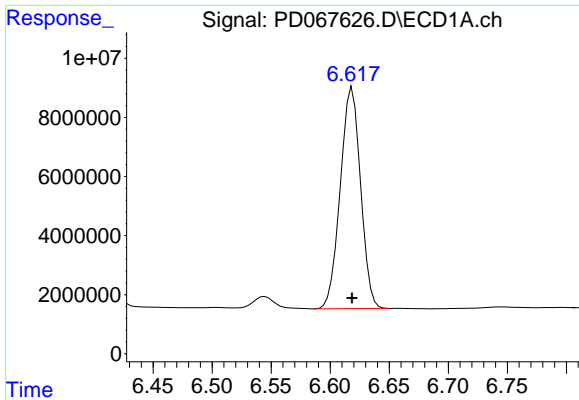
#18 Endrin aldehyde

R.T.: 6.406 min  
 Delta R.T.: 0.000 min  
 Response: 79783123  
 Conc: 52.50 ng/ml



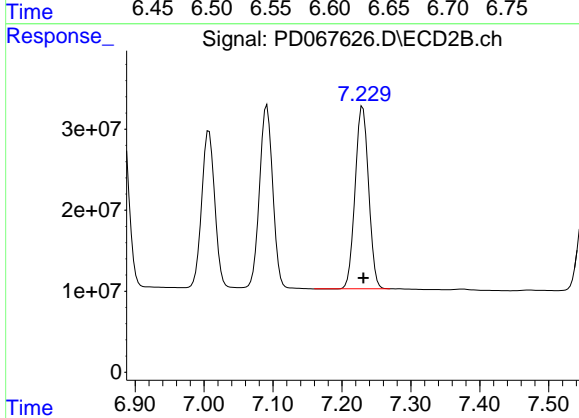
#18 Endrin aldehyde

R.T.: 7.007 min  
 Delta R.T.: 0.000 min  
 Response: 256027064  
 Conc: 56.75 ng/ml

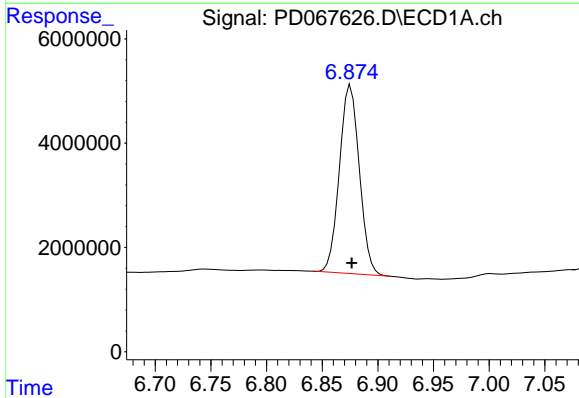


#19 Endosulfan Sulfate  
R.T.: 6.619 min  
Delta R.T.: 0.000 min  
Response: 89581186  
Conc: 55.49 ng/ml

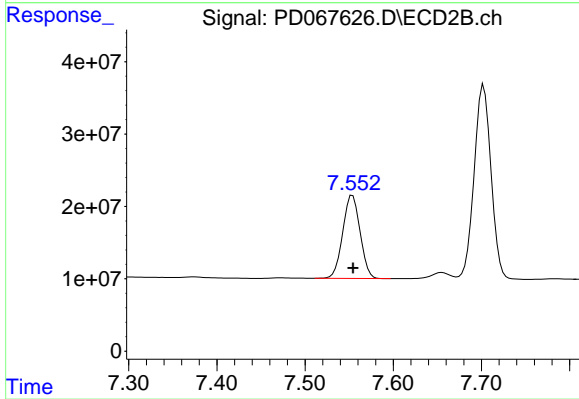
Instrument :  
ECD\_D  
ClientSampleId :



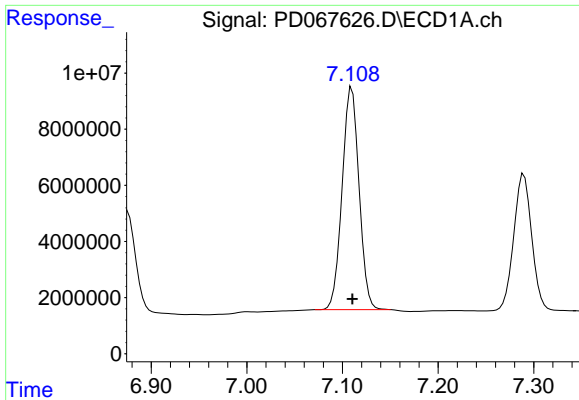
#19 Endosulfan Sulfate  
R.T.: 7.230 min  
Delta R.T.: 0.000 min  
Response: 305790887  
Conc: 55.95 ng/ml



#20 Methoxychlor  
R.T.: 6.876 min  
Delta R.T.: 0.000 min  
Response: 44984216  
Conc: 52.99 ng/ml



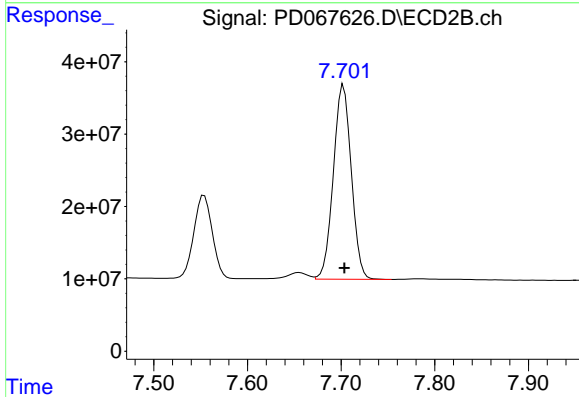
#20 Methoxychlor  
R.T.: 7.554 min  
Delta R.T.: 0.000 min  
Response: 157184402  
Conc: 54.17 ng/ml



#21 Endrin ketone

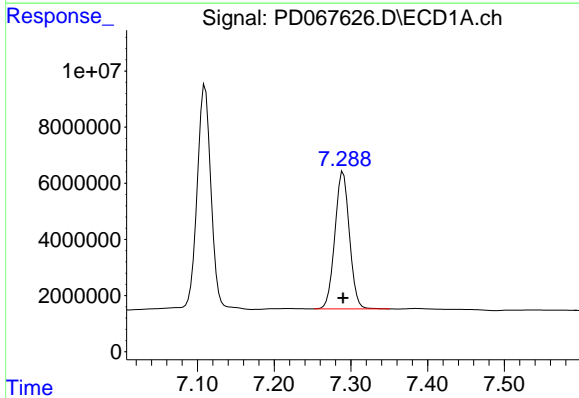
R.T.: 7.110 min  
 Delta R.T.: 0.000 min  
 Response: 97917136  
 Conc: 57.21 ng/ml

Instrument :  
 ECD\_D  
 ClientSampleId :



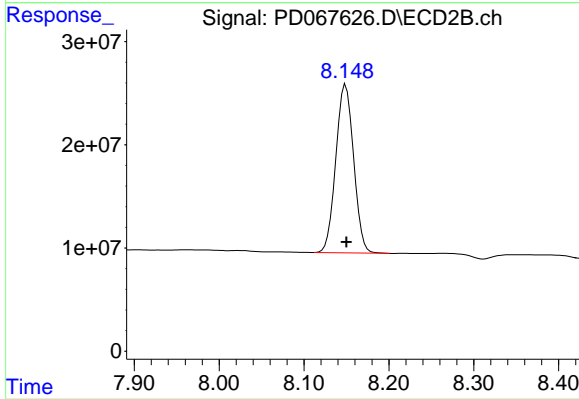
#21 Endrin ketone

R.T.: 7.703 min  
 Delta R.T.: 0.000 min  
 Response: 358121796  
 Conc: 57.07 ng/ml



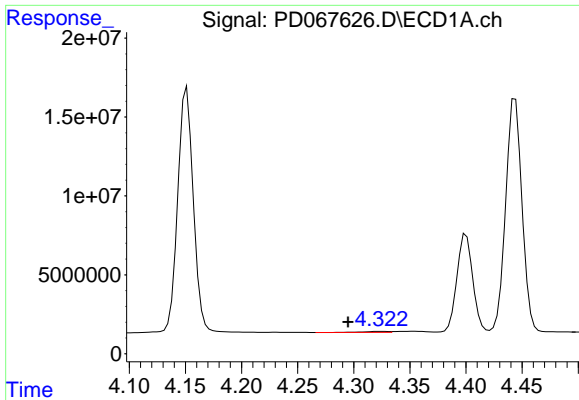
#22 Mirex

R.T.: 7.290 min  
 Delta R.T.: 0.000 min  
 Response: 64350791  
 Conc: 53.80 ng/ml



#22 Mirex

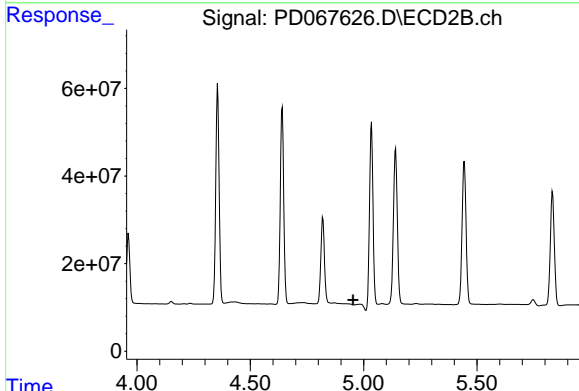
R.T.: 8.149 min  
 Delta R.T.: -0.001 min  
 Response: 237890154  
 Conc: 54.79 ng/ml



#23 Chlordane-1

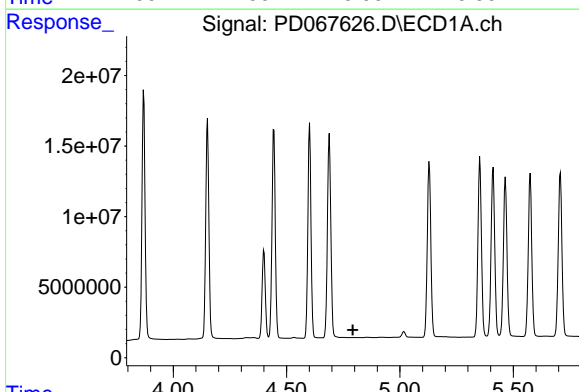
R.T.: 4.324 min  
 Delta R.T.: 0.029 min  
 Response: 864193  
 Conc: 10.94 ng/ml

Instrument :  
 ECD\_D  
 ClientSampleId :



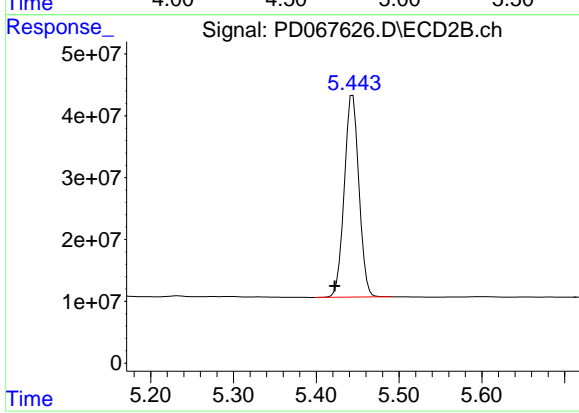
#23 Chlordane-1

R.T.: 0.000 min  
 Exp R.T. : 4.953 min  
 Response: 0  
 Conc: N.D.



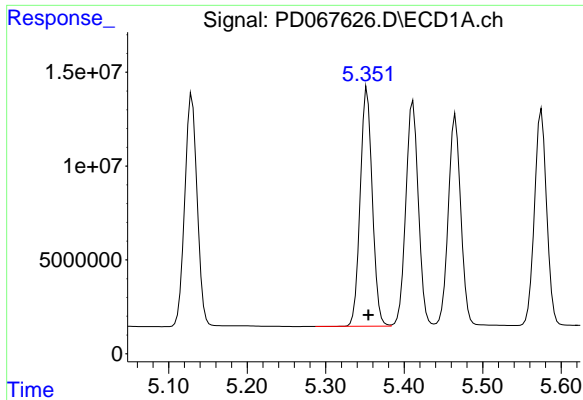
#24 Chlordane-2

R.T.: 0.000 min  
 Exp R.T. : 4.792 min  
 Response: 0  
 Conc: N.D.



#24 Chlordane-2

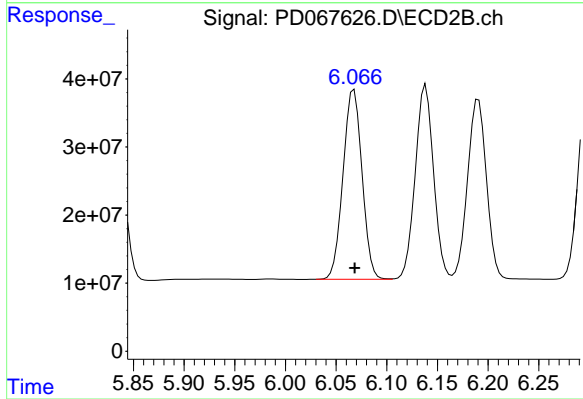
R.T.: 5.444 min  
 Delta R.T.: 0.022 min  
 Response: 401417647  
 Conc: 1462.96 ng/ml



#25 Chlordane-3

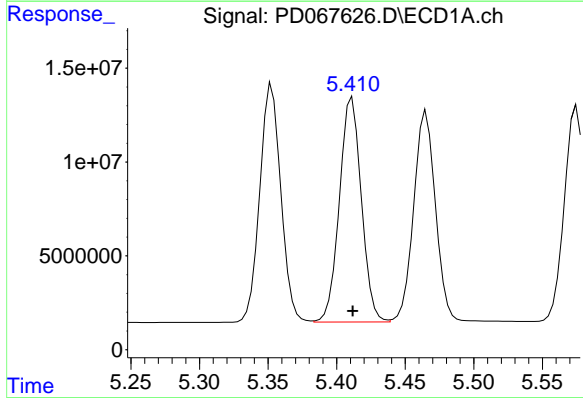
R.T.: 5.353 min  
 Delta R.T.: -0.001 min  
 Response: 135794482  
 Conc: 509.30 ng/ml

Instrument :  
 ECD\_D  
 ClientSampleId :



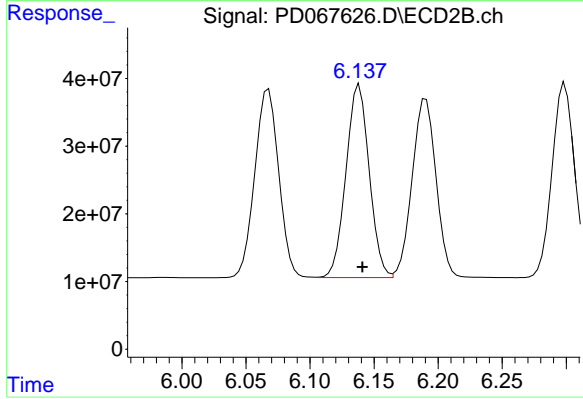
#25 Chlordane-3

R.T.: 6.068 min  
 Delta R.T.: 0.000 min  
 Response: 362577676  
 Conc: 376.43 ng/ml



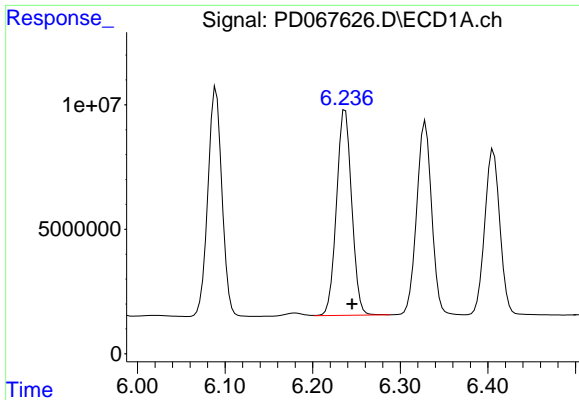
#26 Chlordane-4

R.T.: 5.411 min  
 Delta R.T.: 0.000 min  
 Response: 133416859  
 Conc: 606.30 ng/ml



#26 Chlordane-4

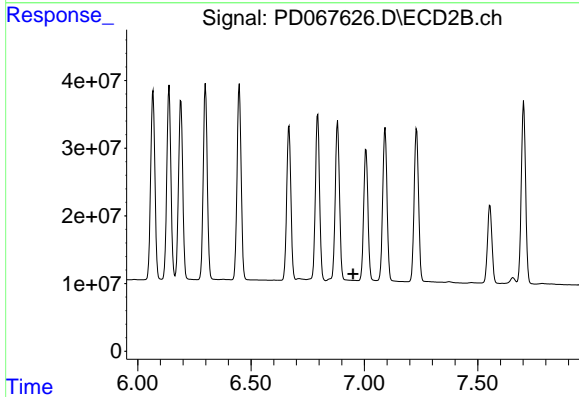
R.T.: 6.138 min  
 Delta R.T.: -0.002 min  
 Response: 359997948  
 Conc: 315.32 ng/ml



#27 Chlordane-5

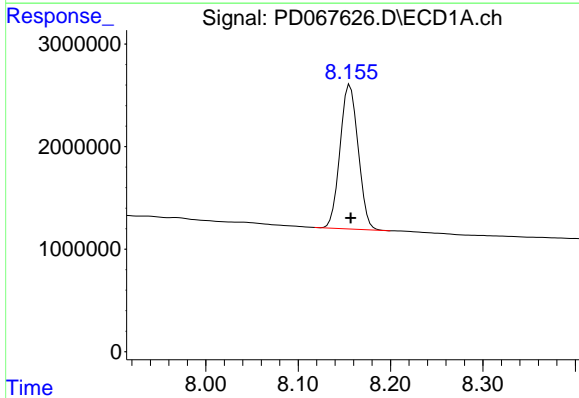
R.T.: 6.237 min  
 Delta R.T.: -0.008 min  
 Response: 99335627  
 Conc: 1147.44 ng/m

Instrument :  
 ECD\_D  
 ClientSampleId :



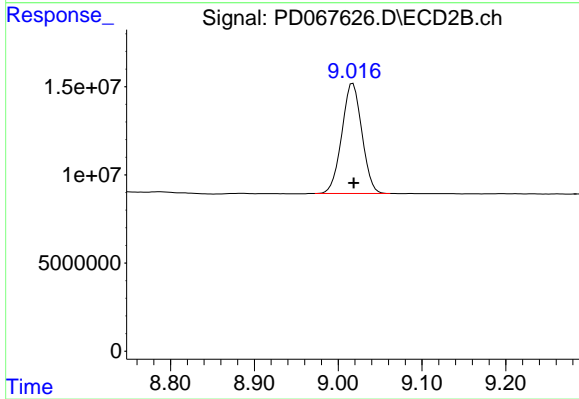
#27 Chlordane-5

R.T.: 0.000 min  
 Exp R.T. : 6.950 min  
 Response: 0  
 Conc: N.D.



#28 Decachlorobiphenyl

R.T.: 8.156 min  
 Delta R.T.: 0.000 min  
 Response: 19164485  
 Conc: 21.57 ng/ml



#28 Decachlorobiphenyl

R.T.: 9.018 min  
 Delta R.T.: -0.001 min  
 Response: 104042592  
 Conc: 21.89 ng/ml