

Data Path : Z:\pestpcbsrv\HPCHEM1\ECD\_D\Data\PD010722\  
 Data File : PD067636.D  
 Signal(s) : Signal #1: ECD1A.ch Signal #2: ECD2B.ch  
 Acq On : 07 Jan 2022 11:47  
 Operator : AR\AJ  
 Sample : N1031-01  
 Misc :  
 ALS Vial : 8 Sample Multiplier: 1

Instrument :  
 ECD\_D  
 ClientSampleId :

Integration File signal 1: autoint1.e  
 Integration File signal 2: autoint2.e  
 Quant Time: Jan 08 06:12:00 2022  
 Quant Method : Z:\pestpcbsrv\HPCHEM1\ECD\_L\methods\PD122821.M  
 Quant Title : GC Extractables  
 QLast Update : Tue Dec 28 03:00:50 2021  
 Response via : Initial Calibration  
 Integrator: ChemStation

Volume Inj. : 1 µl  
 Signal #1 Phase : ZB-MR2 Signal #2 Phase: ZB-MR1  
 Signal #1 Info : 30M x 0.32mm x0.2 Signal #2 Info : 30M x 0.32mm x0.5µm

Compound	RT#1	RT#2	Resp#1	Resp#2	ng/ml	ng/ml
-----						
System Monitoring Compounds						
1) SA Tetrachlo...	3.434	3.960	29312977	69262784	16.131	10.497 #
28) SA Decachlor...	8.155	9.014	8237635	45701959	9.274	9.616
Target Compounds						
2) A alpha-BHC	3.856	4.367	4008272	80491431	1.390	8.675 #
3) MA gamma-BHC...	4.159	4.657	-1284263	88233970	N.D.	10.469
4) MA Heptachlor	4.437	5.129	25081017	15712886	9.223	2.048 #
5) MB Aldrin	4.687	5.437	21092975	55933527	7.621	7.543
6) B beta-BHC	4.389	4.812	43525690	32536419	39.605	8.344 #
7) B delta-BHC	4.623f	5.034	38495698	11840307	14.919	1.580 #
8) B Heptachlo...	5.116	0.000	33035157	0	13.406	N.D. #
9) A Endosulfan I	0.000	6.178	0	7976755	N.D.	1.318 #
10) B gamma-Chl...	5.365	0.000	33682951	0	13.624	N.D. #
11) B alpha-Chl...	5.410	6.132	45464856	11256070	18.804	1.736 #
12) B 4,4'-DDE	5.560f	6.300	6145381	18688772	2.776	3.034
13) MA Dieldrin	5.718	6.442	903265	21736658	0.374	3.272 #
14) MA Endrin	5.970	6.674	35622929	38194376	16.958	6.890 #
15) B Endosulfa...	6.234	6.860f	12402072	77540843	6.184	13.046 #
16) A 4,4'-DDD	6.094	0.000	32802746	0	19.093	N.D. #
17) MA 4,4'-DDT	6.316	7.102	2531497	93905571	1.549	17.549 #
18) B Endrin al...	6.395	7.021	10213632	1804042	6.721	0.400 #
19) B Endosulfa...	6.606	7.234	11096512	10834974	6.873	1.982 #
20) A Methoxychlor	6.856f	7.543	13103569	135.7E6	15.436	46.785 #
21) B Endrin ke...	0.000	7.714	0	22207227	N.D.	3.539 #
22) Mirex	7.291	8.132f	4323473	6584293	3.615	1.516 #
23) Chlordane-1	4.301	4.943	28992206	15041829	367.140	56.329 #
24) Chlordane-2	4.766f	5.437	1201275	55933527	13.295	203.849 #
25) Chlordane-3	5.365	0.000	33682951	0	126.327	N.D. #
26) Chlordane-4	5.410	6.132	45464856	11256070	206.612	9.859 #
27) Chlordane-5	6.234	6.936	12402072	10277263	143.258	46.569 #

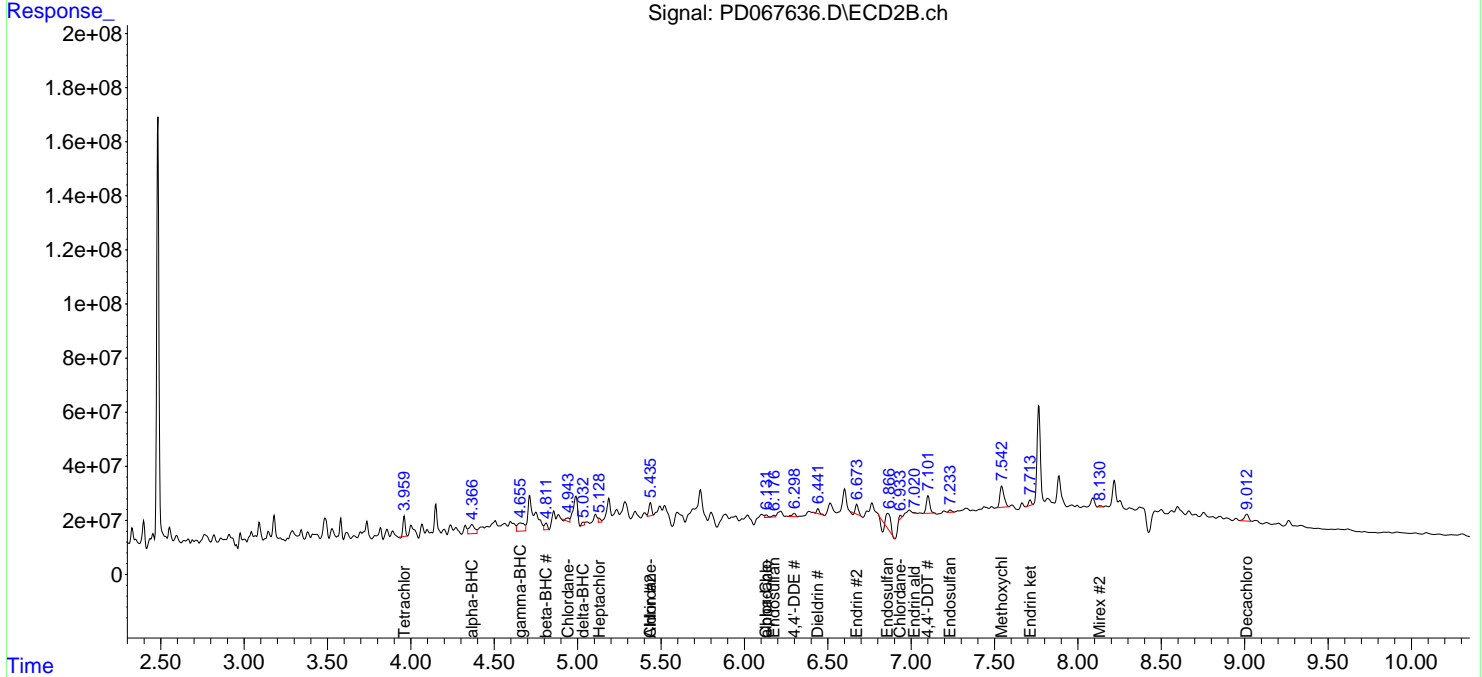
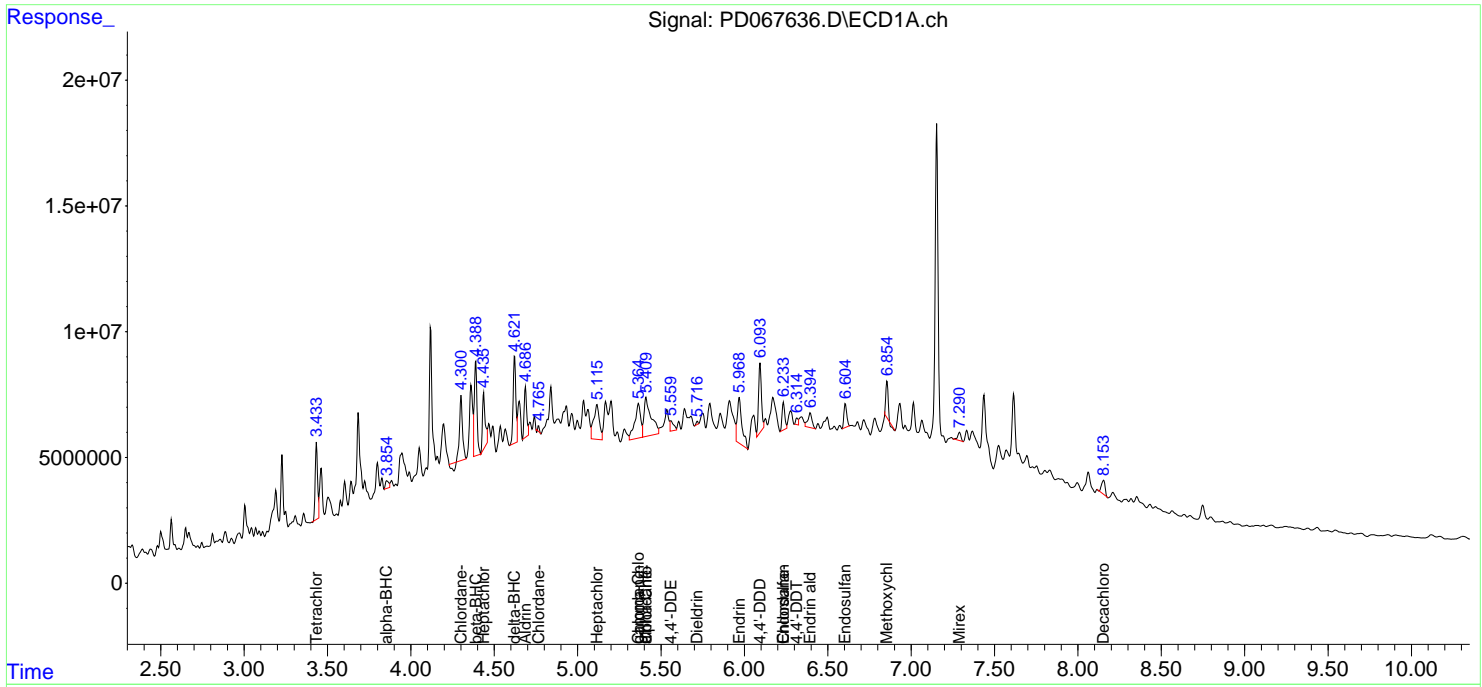
(f)=RT Delta > 1/2 Window (#)=Amounts differ by > 25% (m)=manual int.

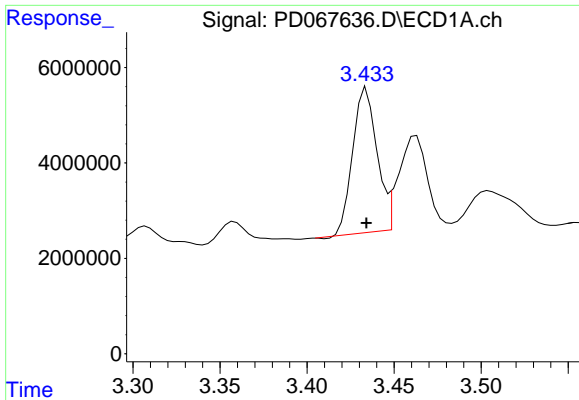
Data Path : Z:\pestpcbsrv\HPCHEM1\ECD\_D\Data\PD010722\  
 Data File : PD067636.D  
 Signal(s) : Signal #1: ECD1A.ch Signal #2: ECD2B.ch  
 Acq On : 07 Jan 2022 11:47  
 Operator : AR\AJ  
 Sample : N1031-01  
 Misc :  
 ALS Vial : 8 Sample Multiplier: 1

Instrument :  
 ECD\_D  
 ClientSampleId :

Integration File signal 1: autoint1.e  
 Integration File signal 2: autoint2.e  
 Quant Time: Jan 08 06:12:00 2022  
 Quant Method : Z:\pestpcbsrv\HPCHEM1\ECD\_L\methods\PD122821.M  
 Quant Title : GC Extractables  
 QLast Update : Tue Dec 28 03:00:50 2021  
 Response via : Initial Calibration  
 Integrator: ChemStation

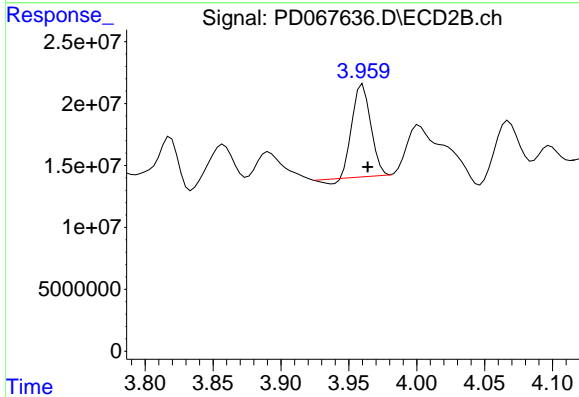
Volume Inj. : 1 µl  
 Signal #1 Phase : ZB-MR2 Signal #2 Phase: ZB-MR1  
 Signal #1 Info : 30M x 0.32mm x0.2 Signal #2 Info : 30M x 0.32mm x0.5µm



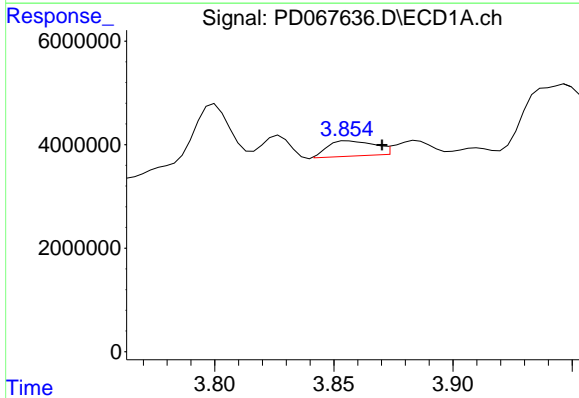


#1 Tetrachloro-m-xylene  
 R.T.: 3.434 min  
 Delta R.T.: 0.000 min  
 Response: 29312977  
 Conc: 16.13 ng/ml

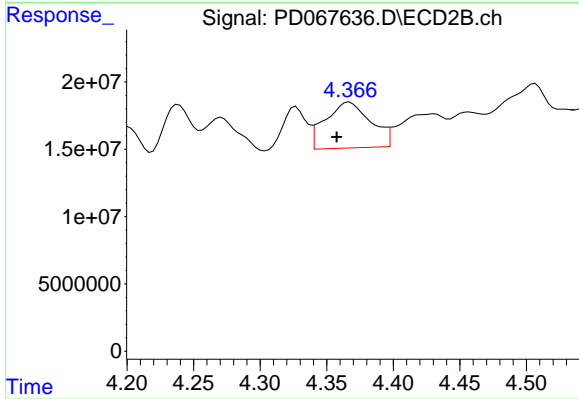
Instrument :  
 ECD\_D  
 ClientSampleId :



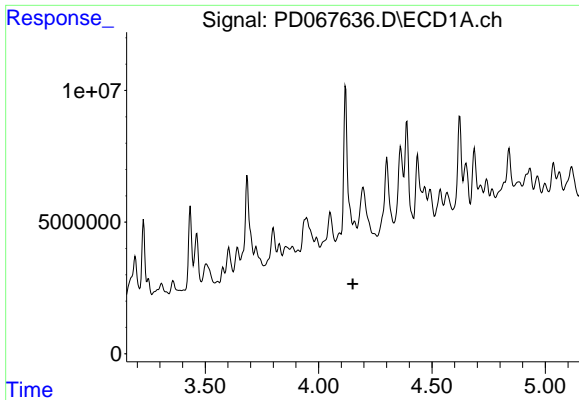
#1 Tetrachloro-m-xylene  
 R.T.: 3.960 min  
 Delta R.T.: -0.003 min  
 Response: 69262784  
 Conc: 10.50 ng/ml



#2 alpha-BHC  
 R.T.: 3.856 min  
 Delta R.T.: -0.014 min  
 Response: 4008272  
 Conc: 1.39 ng/ml



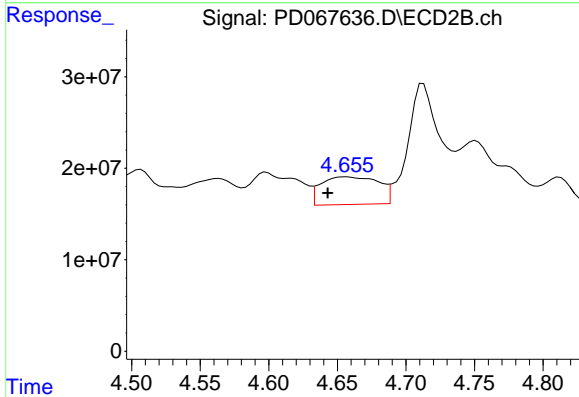
#2 alpha-BHC  
 R.T.: 4.367 min  
 Delta R.T.: 0.009 min  
 Response: 80491431  
 Conc: 8.68 ng/ml



#3 gamma-BHC (Lindane)

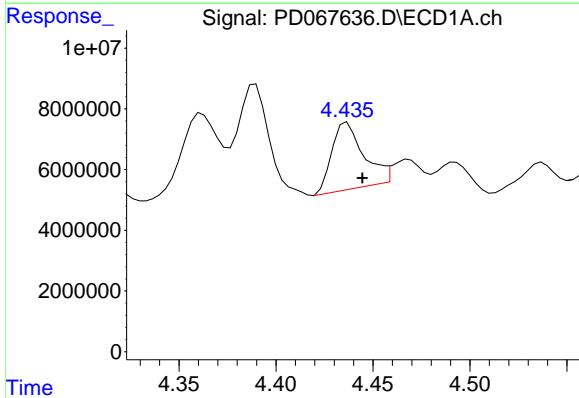
R.T.: 4.159 min  
 Delta R.T.: 0.007 min  
 Response: -1284263  
 Conc: N.D.

Instrument :  
 ECD\_D  
 ClientSampleId :



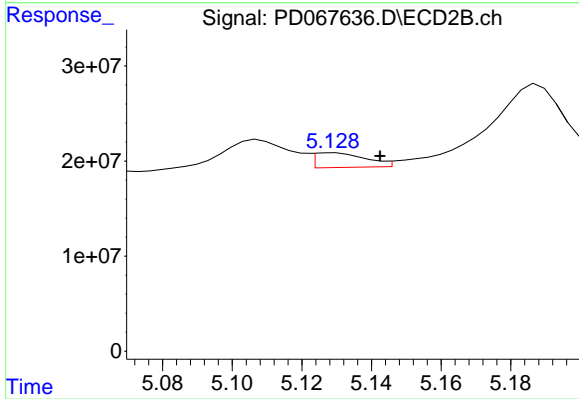
#3 gamma-BHC (Lindane)

R.T.: 4.657 min  
 Delta R.T.: 0.014 min  
 Response: 88233970  
 Conc: 10.47 ng/ml



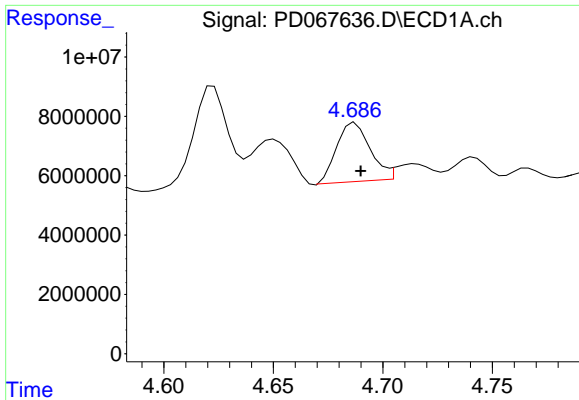
#4 Heptachlor

R.T.: 4.437 min  
 Delta R.T.: -0.008 min  
 Response: 25081017  
 Conc: 9.22 ng/ml



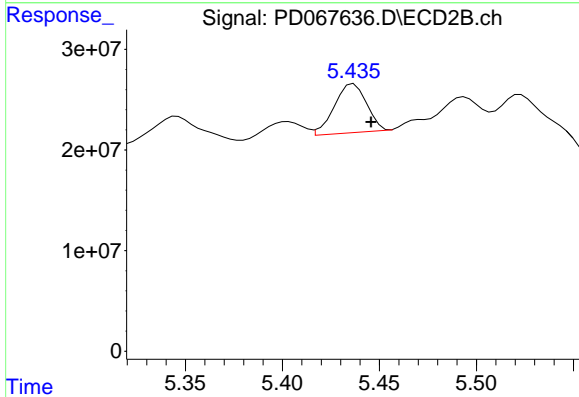
#4 Heptachlor

R.T.: 5.129 min  
 Delta R.T.: -0.013 min  
 Response: 15712886  
 Conc: 2.05 ng/ml

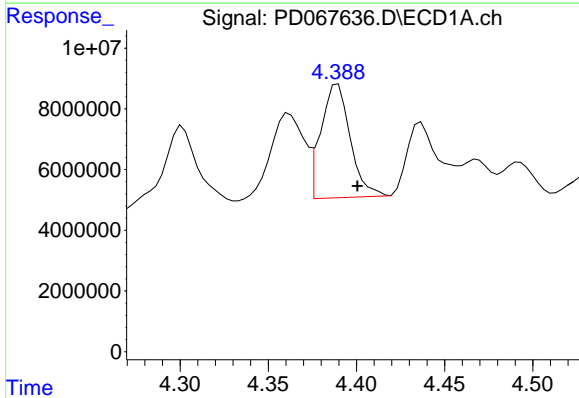


#5 Aldrin  
 R.T.: 4.687 min  
 Delta R.T.: -0.003 min  
 Response: 21092975  
 Conc: 7.62 ng/ml

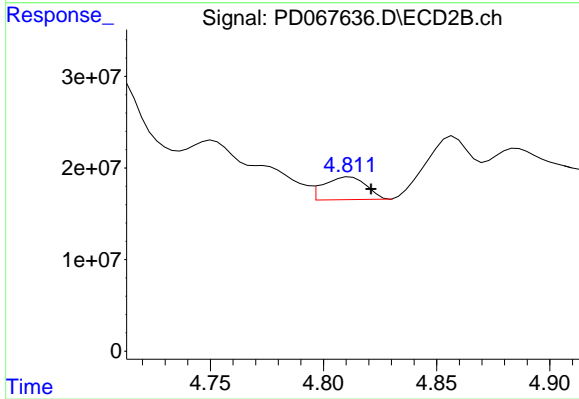
Instrument :  
 ECD\_D  
 ClientSampleId :



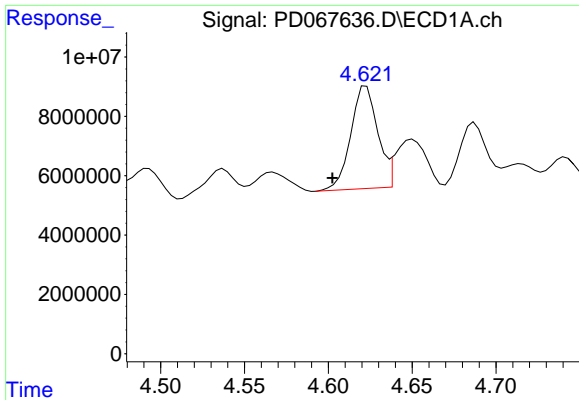
#5 Aldrin  
 R.T.: 5.437 min  
 Delta R.T.: -0.009 min  
 Response: 55933527  
 Conc: 7.54 ng/ml



#6 beta-BHC  
 R.T.: 4.389 min  
 Delta R.T.: -0.011 min  
 Response: 43525690  
 Conc: 39.60 ng/ml



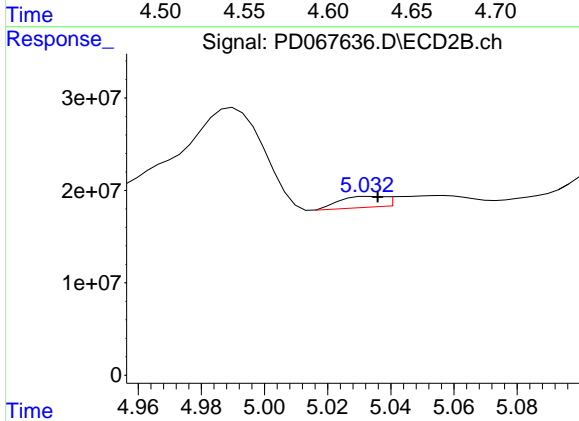
#6 beta-BHC  
 R.T.: 4.812 min  
 Delta R.T.: -0.009 min  
 Response: 32536419  
 Conc: 8.34 ng/ml



#7 delta-BHC

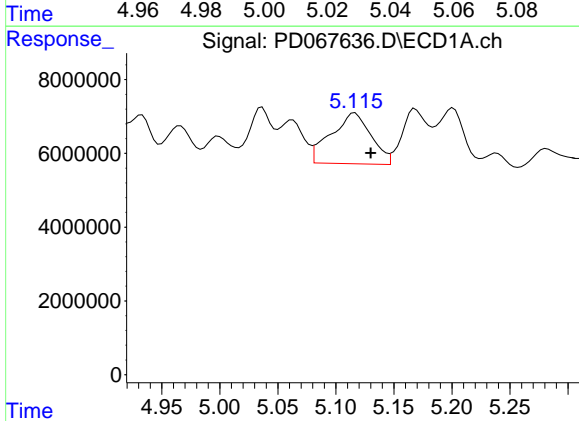
R.T.: 4.623 min  
 Delta R.T.: 0.020 min  
 Response: 38495698  
 Conc: 14.92 ng/ml

Instrument :  
 ECD\_D  
 ClientSampleId :



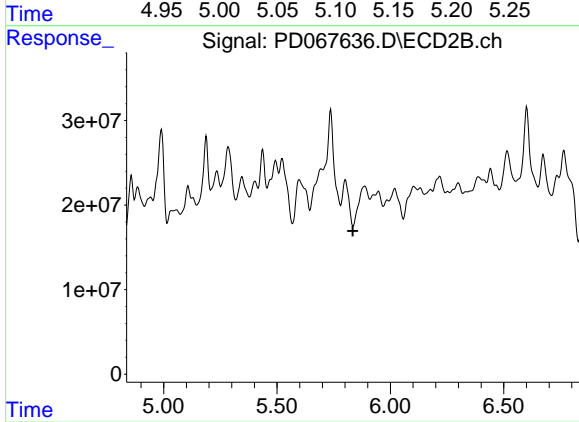
#7 delta-BHC

R.T.: 5.034 min  
 Delta R.T.: -0.002 min  
 Response: 11840307  
 Conc: 1.58 ng/ml



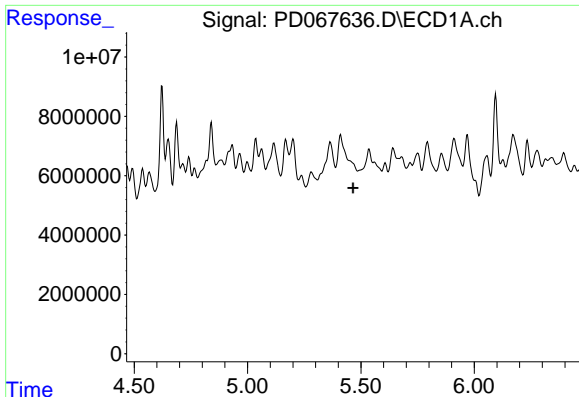
#8 Heptachlor epoxide

R.T.: 5.116 min  
 Delta R.T.: -0.014 min  
 Response: 33035157  
 Conc: 13.41 ng/ml



#8 Heptachlor epoxide

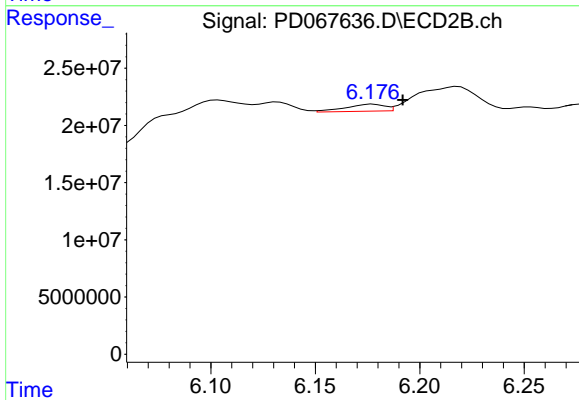
R.T.: 0.000 min  
 Exp R.T. : 5.835 min  
 Response: 0  
 Conc: N.D.



#9 Endosulfan I

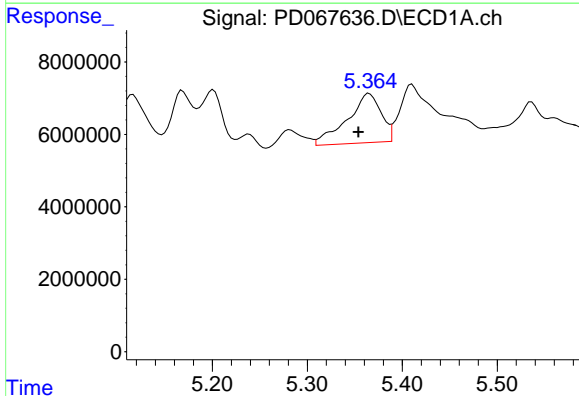
R.T.: 0.000 min  
 Exp R.T.: 5.466 min  
 Response: 0  
 Conc: N.D.

Instrument :  
 ECD\_D  
 ClientSampleId :



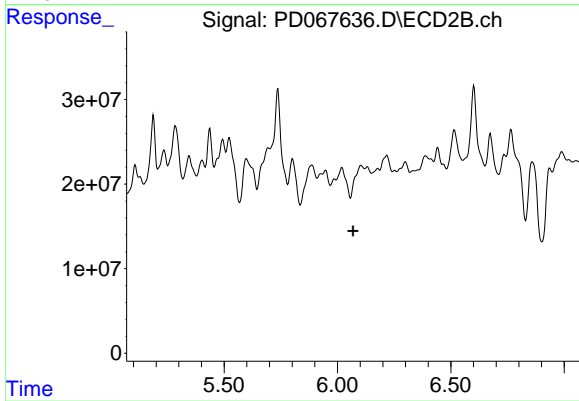
#9 Endosulfan I

R.T.: 6.178 min  
 Delta R.T.: -0.014 min  
 Response: 7976755  
 Conc: 1.32 ng/ml



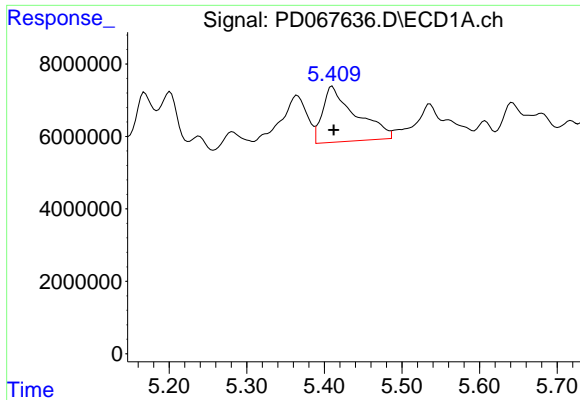
#10 gamma-Chlordane

R.T.: 5.365 min  
 Delta R.T.: 0.011 min  
 Response: 33682951  
 Conc: 13.62 ng/ml



#10 gamma-Chlordane

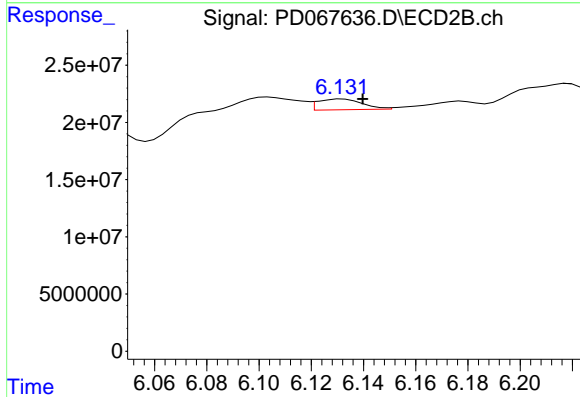
R.T.: 0.000 min  
 Exp R.T.: 6.069 min  
 Response: 0  
 Conc: N.D.



#11 alpha-Chlordane

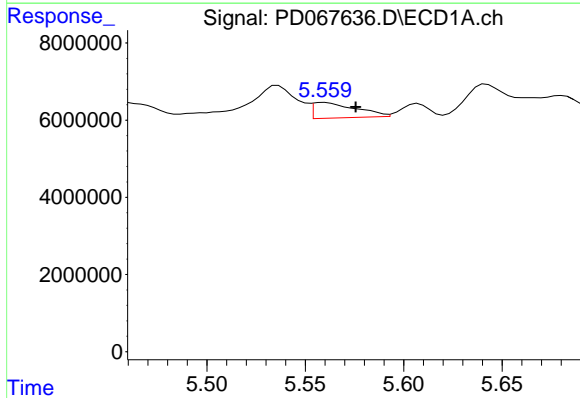
R.T.: 5.410 min  
 Delta R.T.: -0.002 min  
 Response: 45464856  
 Conc: 18.80 ng/ml

Instrument :  
 ECD\_D  
 ClientSampleId :



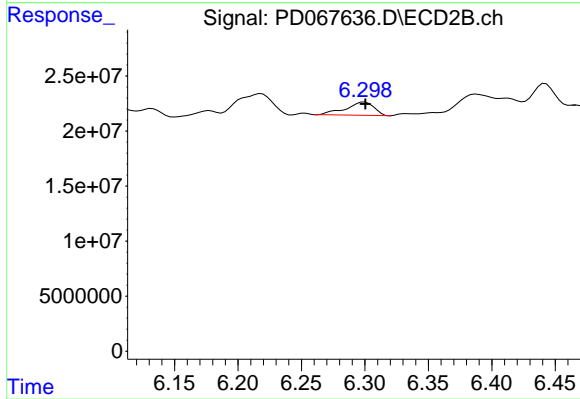
#11 alpha-Chlordane

R.T.: 6.132 min  
 Delta R.T.: -0.008 min  
 Response: 11256070  
 Conc: 1.74 ng/ml



#12 4,4'-DDE

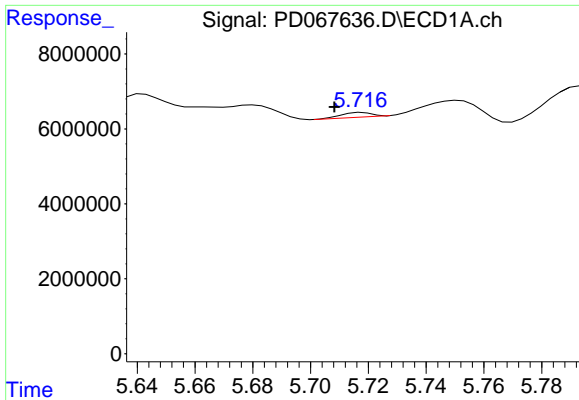
R.T.: 5.560 min  
 Delta R.T.: -0.016 min  
 Response: 6145381  
 Conc: 2.78 ng/ml



#12 4,4'-DDE

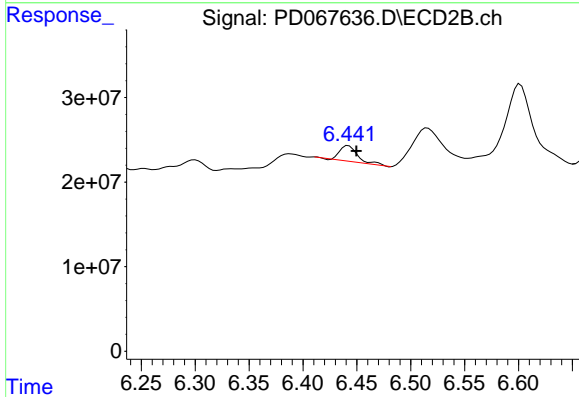
R.T.: 6.300 min  
 Delta R.T.: 0.000 min  
 Response: 18688772  
 Conc: 3.03 ng/ml



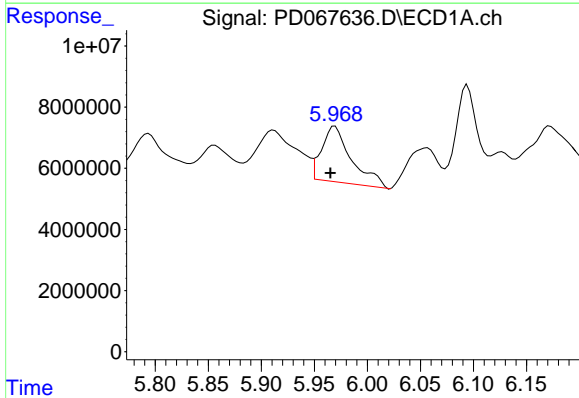


#13 Dieldrin  
 R.T.: 5.718 min  
 Delta R.T.: 0.010 min  
 Response: 903265  
 Conc: 0.37 ng/ml

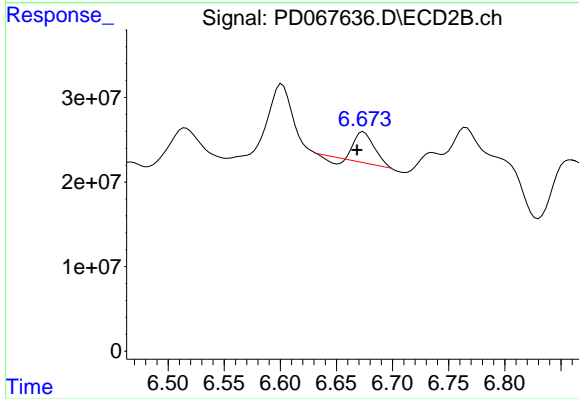
Instrument :  
 ECD\_D  
 ClientSampleId :



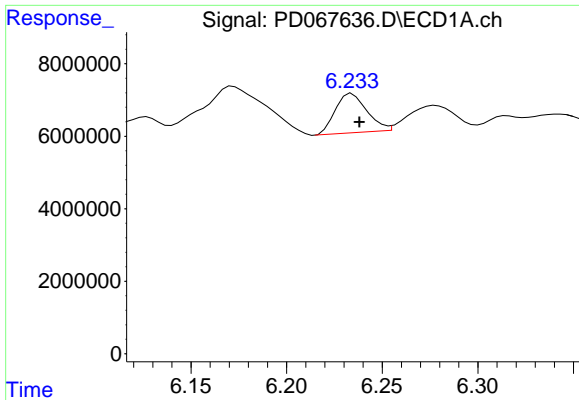
#13 Dieldrin  
 R.T.: 6.442 min  
 Delta R.T.: -0.008 min  
 Response: 21736658  
 Conc: 3.27 ng/ml



#14 Endrin  
 R.T.: 5.970 min  
 Delta R.T.: 0.004 min  
 Response: 35622929  
 Conc: 16.96 ng/ml



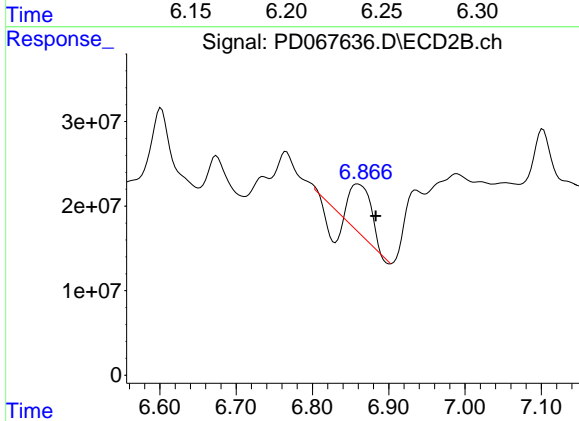
#14 Endrin  
 R.T.: 6.674 min  
 Delta R.T.: 0.006 min  
 Response: 38194376  
 Conc: 6.89 ng/ml



#15 Endosulfan II

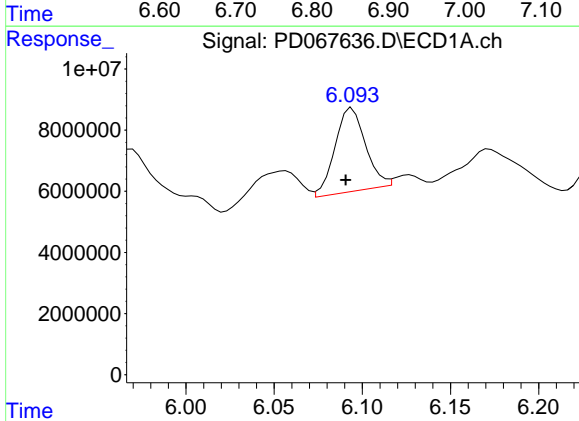
R.T.: 6.234 min  
 Delta R.T.: -0.004 min  
 Response: 12402072  
 Conc: 6.18 ng/ml

Instrument :  
 ECD\_D  
 ClientSampleId :



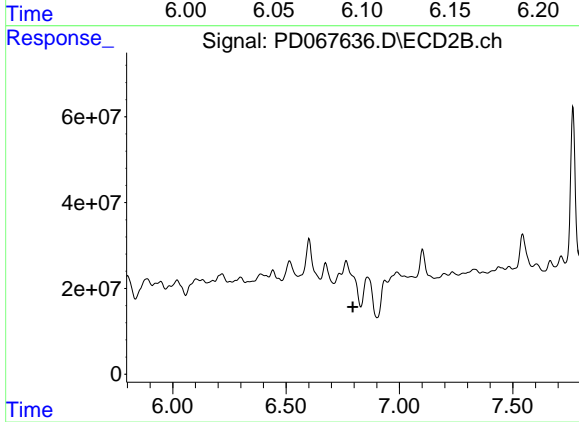
#15 Endosulfan II

R.T.: 6.860 min  
 Delta R.T.: -0.023 min  
 Response: 77540843  
 Conc: 13.05 ng/ml



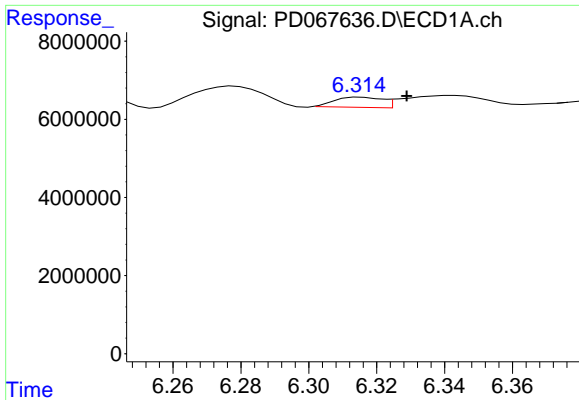
#16 4,4'-DDD

R.T.: 6.094 min  
 Delta R.T.: 0.004 min  
 Response: 32802746  
 Conc: 19.09 ng/ml



#16 4,4'-DDD

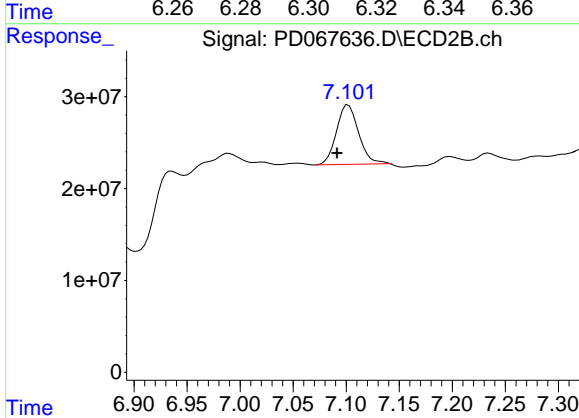
R.T.: 0.000 min  
 Exp R.T. : 6.795 min  
 Response: 0  
 Conc: N.D.



#17 4,4'-DDT

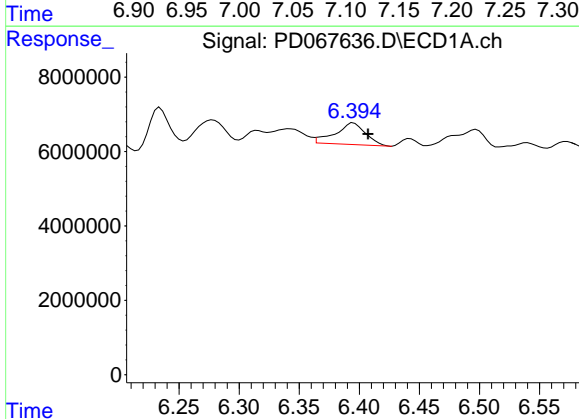
R.T.: 6.316 min  
 Delta R.T.: -0.013 min  
 Response: 2531497  
 Conc: 1.55 ng/ml

Instrument :  
 ECD\_D  
 ClientSampleId :



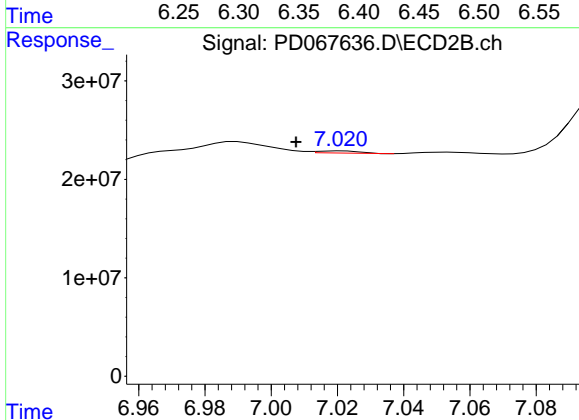
#17 4,4'-DDT

R.T.: 7.102 min  
 Delta R.T.: 0.011 min  
 Response: 93905571  
 Conc: 17.55 ng/ml



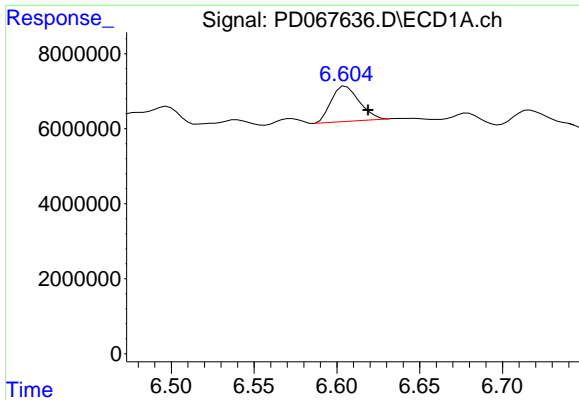
#18 Endrin aldehyde

R.T.: 6.395 min  
 Delta R.T.: -0.012 min  
 Response: 10213632  
 Conc: 6.72 ng/ml



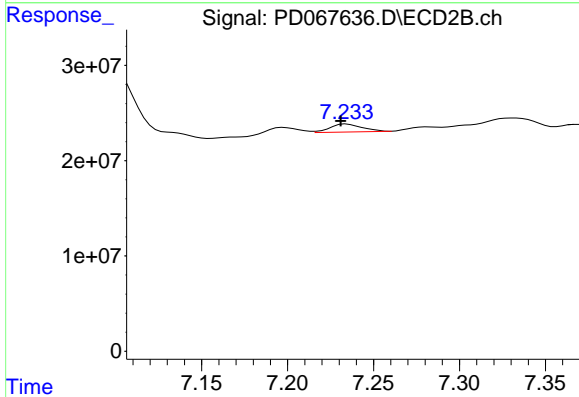
#18 Endrin aldehyde

R.T.: 7.021 min  
 Delta R.T.: 0.014 min  
 Response: 1804042  
 Conc: 0.40 ng/ml

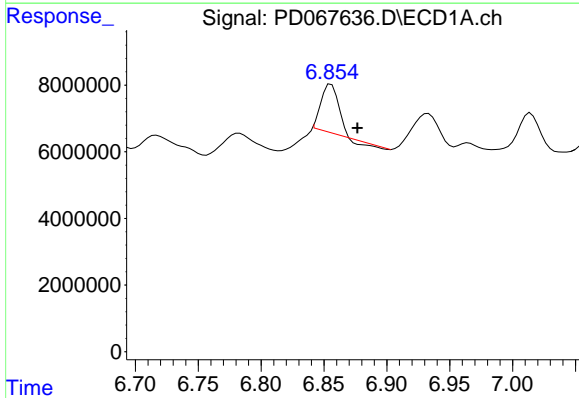


#19 Endosulfan Sulfate  
 R.T.: 6.606 min  
 Delta R.T.: -0.013 min  
 Response: 11096512  
 Conc: 6.87 ng/ml

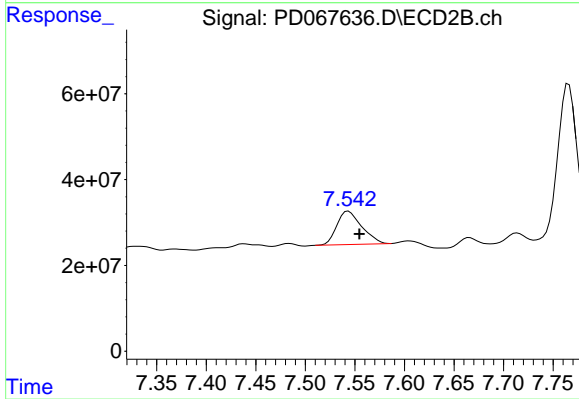
Instrument :  
 ECD\_D  
 ClientSampleId :



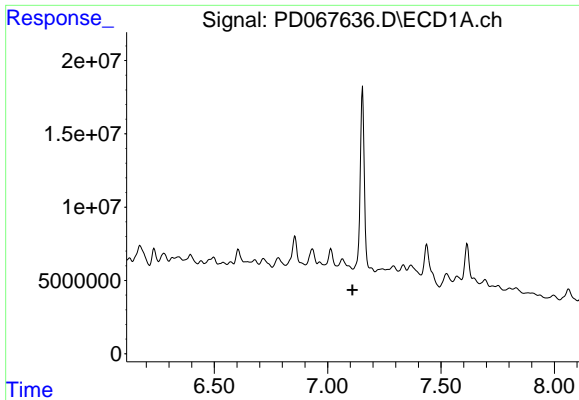
#19 Endosulfan Sulfate  
 R.T.: 7.234 min  
 Delta R.T.: 0.003 min  
 Response: 10834974  
 Conc: 1.98 ng/ml



#20 Methoxychlor  
 R.T.: 6.856 min  
 Delta R.T.: -0.021 min  
 Response: 13103569  
 Conc: 15.44 ng/ml



#20 Methoxychlor  
 R.T.: 7.543 min  
 Delta R.T.: -0.011 min  
 Response: 135745393  
 Conc: 46.79 ng/ml

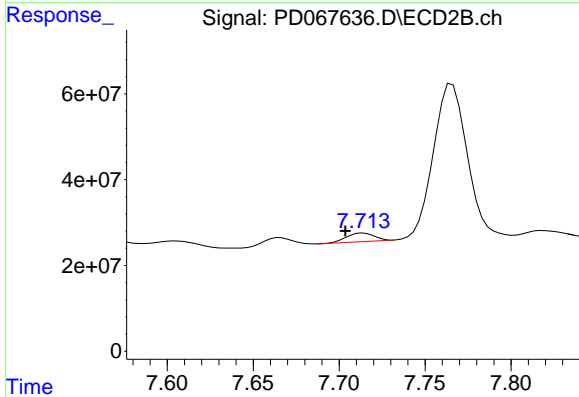


#21 Endrin ketone

R.T.: 0.000 min  
 Exp R.T.: 7.110 min  
 Response: 0  
 Conc: N.D.

Instrument :  
 ECD\_D  
 ClientSampleId :

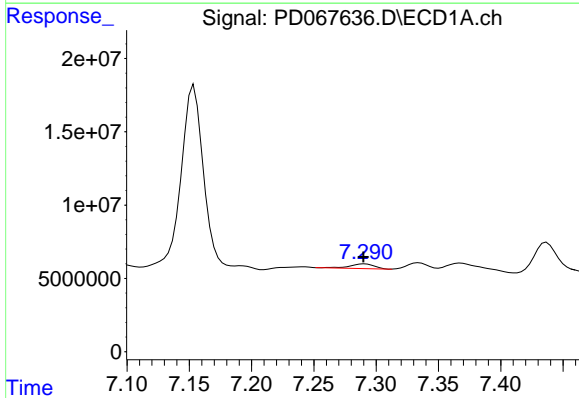
Time



#21 Endrin ketone

R.T.: 7.714 min  
 Delta R.T.: 0.010 min  
 Response: 22207227  
 Conc: 3.54 ng/ml

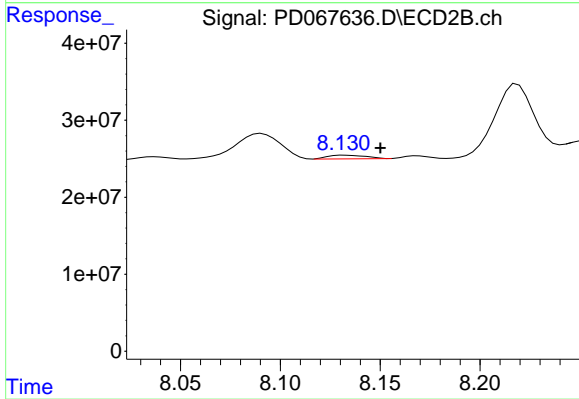
Time



#22 Mirex

R.T.: 7.291 min  
 Delta R.T.: 0.001 min  
 Response: 4323473  
 Conc: 3.61 ng/ml

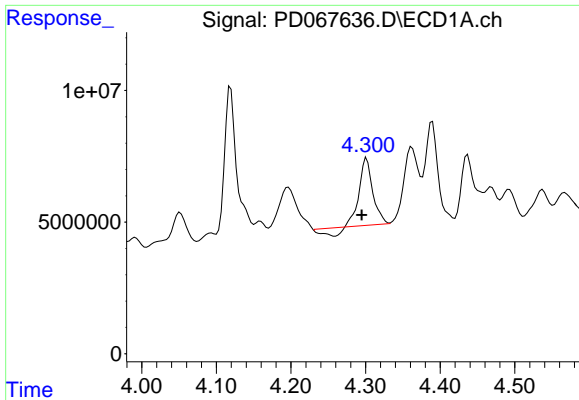
Time



#22 Mirex

R.T.: 8.132 min  
 Delta R.T.: -0.018 min  
 Response: 6584293  
 Conc: 1.52 ng/ml

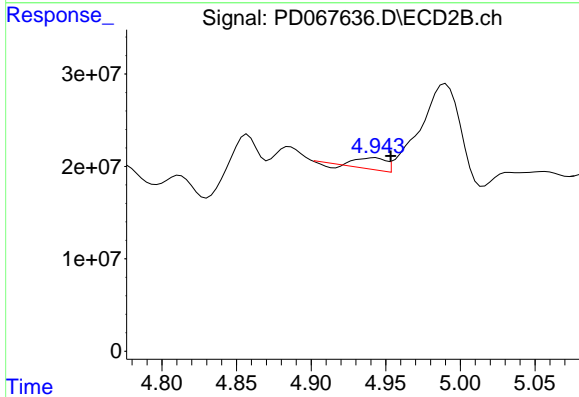
Time



#23 Chlordane-1

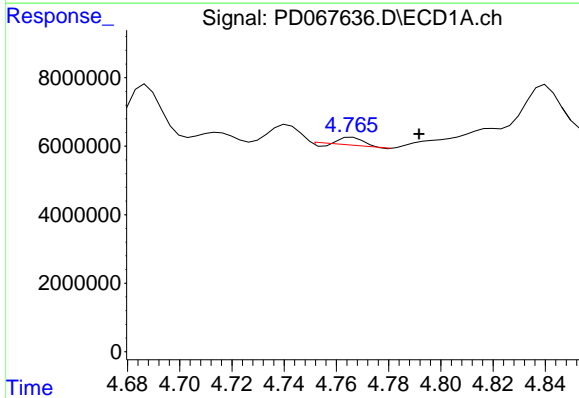
R.T.: 4.301 min  
 Delta R.T.: 0.006 min  
 Response: 28992206  
 Conc: 367.14 ng/ml

Instrument :  
 ECD\_D  
 ClientSampleId :



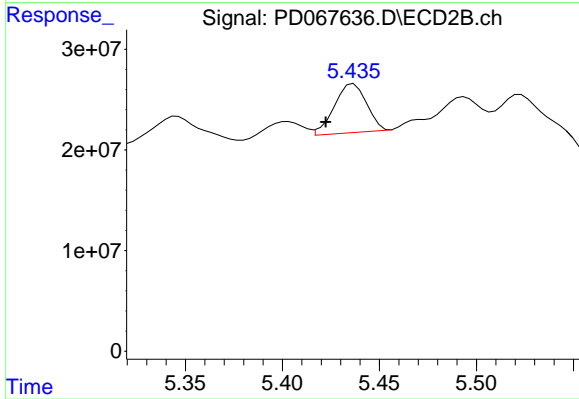
#23 Chlordane-1

R.T.: 4.943 min  
 Delta R.T.: -0.010 min  
 Response: 15041829  
 Conc: 56.33 ng/ml



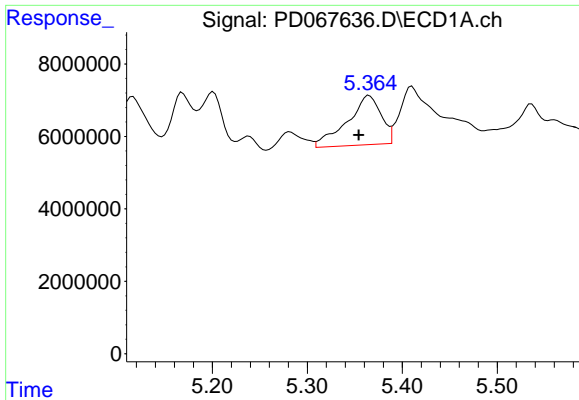
#24 Chlordane-2

R.T.: 4.766 min  
 Delta R.T.: -0.025 min  
 Response: 1201275  
 Conc: 13.30 ng/ml



#24 Chlordane-2

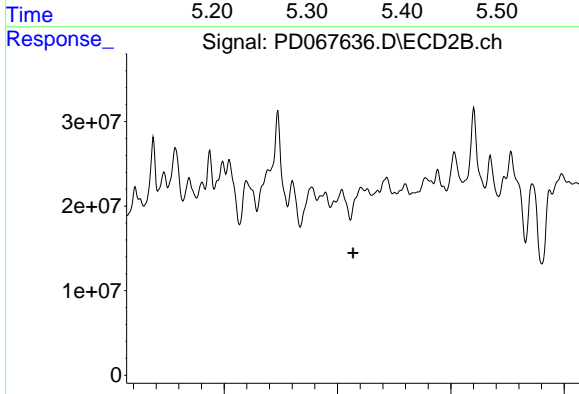
R.T.: 5.437 min  
 Delta R.T.: 0.014 min  
 Response: 55933527  
 Conc: 203.85 ng/ml



#25 Chlordane-3

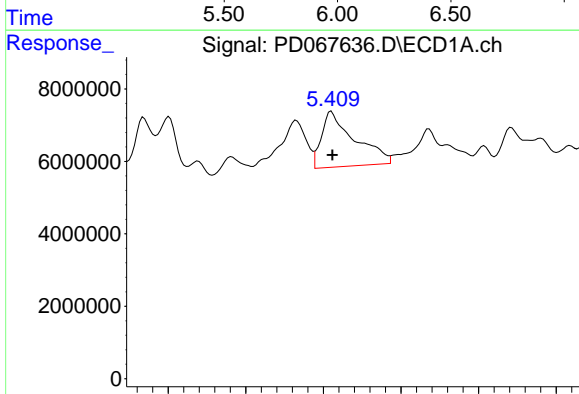
R.T.: 5.365 min  
 Delta R.T.: 0.011 min  
 Response: 33682951  
 Conc: 126.33 ng/ml

Instrument :  
 ECD\_D  
 ClientSampleId :



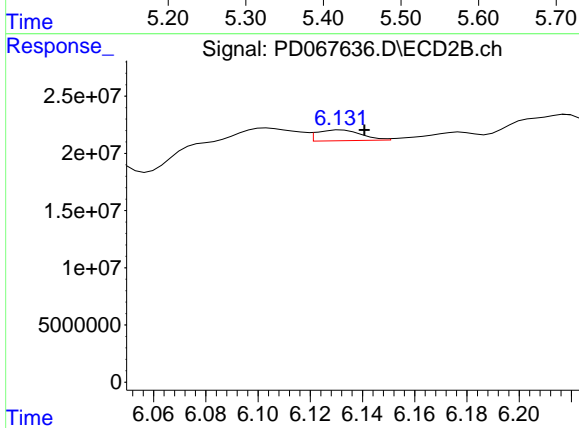
#25 Chlordane-3

R.T.: 0.000 min  
 Exp R.T. : 6.068 min  
 Response: 0  
 Conc: N.D.



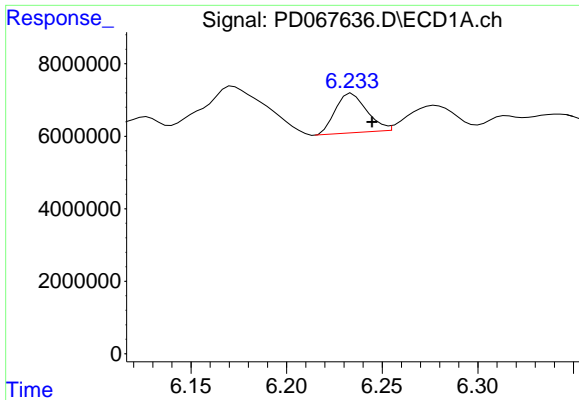
#26 Chlordane-4

R.T.: 5.410 min  
 Delta R.T.: -0.001 min  
 Response: 45464856  
 Conc: 206.61 ng/ml



#26 Chlordane-4

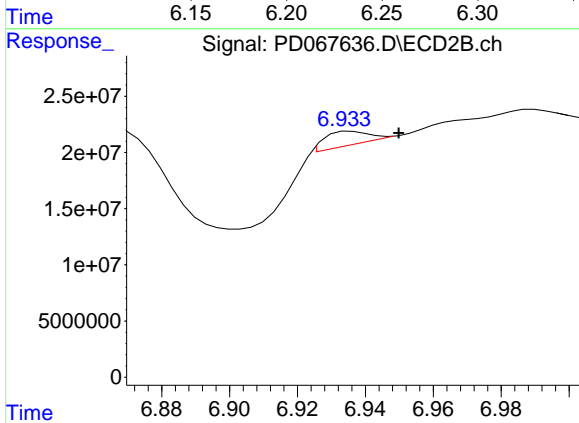
R.T.: 6.132 min  
 Delta R.T.: -0.009 min  
 Response: 11256070  
 Conc: 9.86 ng/ml



#27 Chlordane-5

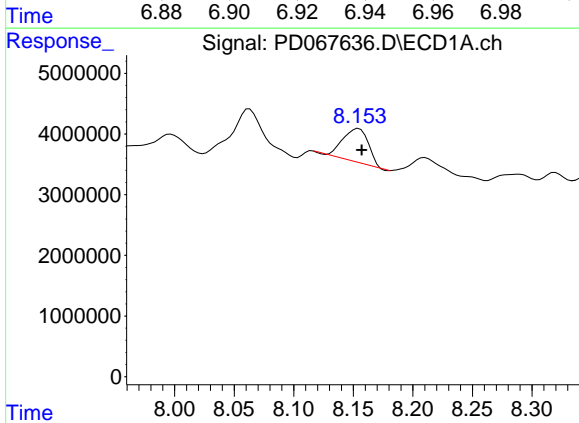
R.T.: 6.234 min  
 Delta R.T.: -0.010 min  
 Response: 12402072  
 Conc: 143.26 ng/ml

Instrument :  
 ECD\_D  
 ClientSampleId :



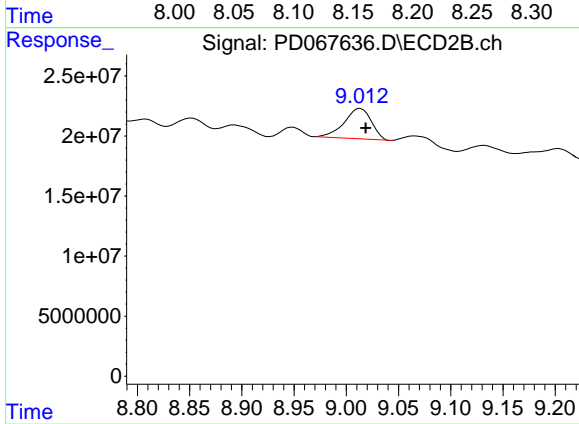
#27 Chlordane-5

R.T.: 6.936 min  
 Delta R.T.: -0.014 min  
 Response: 10277263  
 Conc: 46.57 ng/ml



#28 Decachlorobiphenyl

R.T.: 8.155 min  
 Delta R.T.: -0.002 min  
 Response: 8237635  
 Conc: 9.27 ng/ml



#28 Decachlorobiphenyl

R.T.: 9.014 min  
 Delta R.T.: -0.005 min  
 Response: 45701959  
 Conc: 9.62 ng/ml