

Data Path : Z:\pestpcbsrv\HPCHEM1\ECD\_D\Data\PD010920\  
 Data File : PD056881.D  
 Signal(s) : Signal #1: ECD1A.ch Signal #2: ECD2B.ch  
 Acq On : 09 Jan 2020 16:22  
 Operator : AJ\MA  
 Sample : PEM04  
 Misc :  
 ALS Vial : 3 Sample Multiplier: 1

Instrument :  
 ECD\_D  
 ClientSampled :  
 PEM04

Manual Integrations  
 APPROVED

Ankita  
 1/10/2020 10:42:37 AM

Integration File signal 1: autoint1.e  
 Integration File signal 2: autoint2.e  
 Quant Time: Jan 10 06:50:06 2020  
 Quant Method : Z:\pestpcbsrv\HPCHEM1\ECD\_D\Method\PD010920CLP.M  
 Quant Title : GC Extractables  
 QLast Update : Fri Jan 10 06:39:54 2020  
 Response via : Initial Calibration  
 Integrator: ChemStation

Volume Inj. : 1 µl  
 Signal #1 Phase : ZB-MR2 Signal #2 Phase: ZB-MR1  
 Signal #1 Info : 30M x 0.32mm x0.2 Signal #2 Info : 30M x 0.32mm x 0.50µm

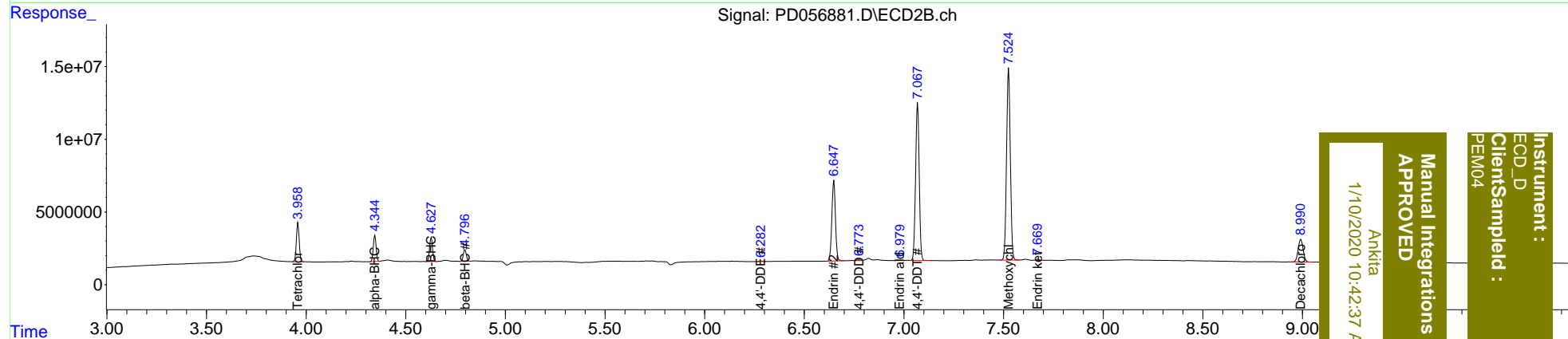
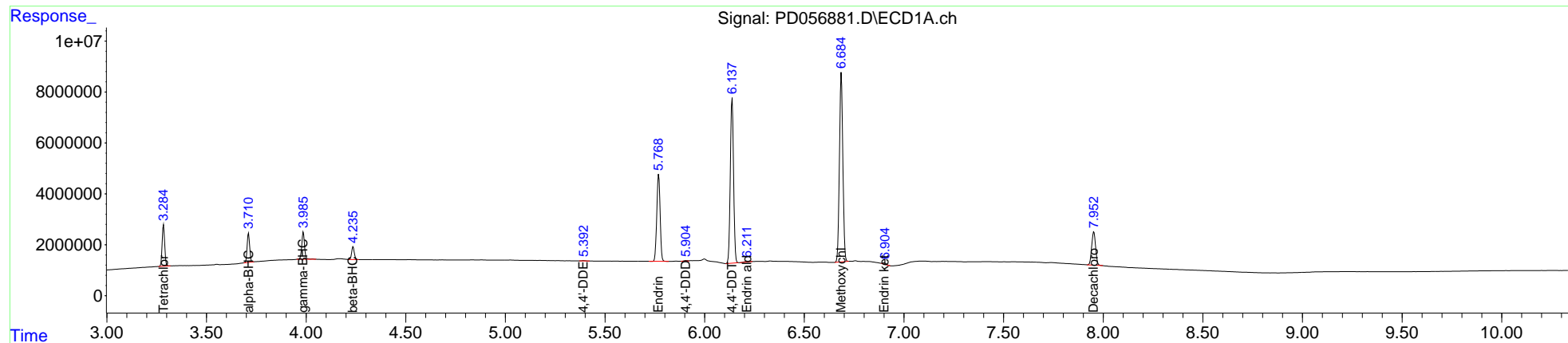
	Compound	RT#1	RT#2	Resp#1	Resp#2	ng/ml	ng/ml
-----							
System Monitoring Compounds							
1)	SA Tetrachlo...	3.285	3.959	14569708	26263150	17.989	17.805
27)	SA Decachlor...	7.953	8.992	17980139	26992086	18.986	18.318
Target Compounds							
2)	A alpha-BHC	3.711	4.345	10171004	17558742	8.720	8.453
3)	MA gamma-BHC...	3.986	4.628	10630616	17035671	9.109	8.472
6)	B beta-BHC	4.236	4.797	4638933	8513396	9.190	9.046
12)	B 4,4'-DDE	5.392	6.282	184946	390887	0.188m	0.221m
14)	MA Endrin	5.769	6.649	39771885	69466814	46.073	45.298
16)	A 4,4'-DDD	5.904	6.773	271986	753410	0.355m	0.529m#
17)	MA 4,4'-DDT	6.138	7.069	73273290	136.6E6	102.505	96.436
18)	B Endrin al...	6.211	6.979	500991	272665	0.657m	0.198m#
20)	A Methoxychlor	6.686	7.525	88899450	174.2E6	227.900	223.213
21)	B Endrin ke...	6.904	7.669	620006	937382	0.658m	0.566m

(f)=RT Delta > 1/2 Window (#)=Amounts differ by > 25% (m)=manual int.

Data Path : Z:\pestpcbsrv\HPCHEM1\ECD\_D\Data\PD010920\  
 Data File : PD056881.D  
 Signal(s) : Signal #1: ECD1A.ch Signal #2: ECD2B.ch  
 Acq On : 09 Jan 2020 16:22  
 Operator : AJ\MA  
 Sample : PEM04  
 Misc :  
 ALS Vial : 3 Sample Multiplier: 1

Integration File signal 1: autoint1.e  
 Integration File signal 2: autoint2.e  
 Quant Time: Jan 10 06:50:06 2020  
 Quant Method : Z:\pestpcbsrv\HPCHEM1\ECD\_D\Method\PD010920CLP.M  
 Quant Title : GC Extractables  
 QLast Update : Fri Jan 10 06:39:54 2020  
 Response via : Initial Calibration  
 Integrator: ChemStation

Volume Inj. : 1 µl  
 Signal #1 Phase : ZB-MR2 Signal #2 Phase: ZB-MR1  
 Signal #1 Info : 30M x 0.32mm x0.2 Signal #2 Info : 30M x 0.32mm x 0.50µm



Instrument : ECD\_D  
 Client Sample Id : PEM04  
 Manual Integrations APPROVED  
 Ankitia  
 1/10/2020 10:42:37 AM