

Data Path : Z:\pestpcbsrv\HPCHEM1\ECD_D\Data\PD011022\
 Data File : PD067652.D
 Signal(s) : Signal #1: ECD1A.ch Signal #2: ECD2B.ch
 Acq On : 10 Jan 2022 08:16
 Operator : AR\AJ
 Sample : HEXANE
 Misc :
 ALS Vial : 1 Sample Multiplier: 1

Instrument :
 ECD_D
ClientSampleId :
 HEXANE

Integration File signal 1: autoint1.e
 Integration File signal 2: autoint2.e
 Quant Time: Jan 11 00:52:52 2022
 Quant Method : Z:\pestpcbsrv\HPCHEM1\ECD_L\methods\PD122821.M
 Quant Title : GC Extractables
 QLast Update : Tue Dec 28 03:00:50 2021
 Response via : Initial Calibration
 Integrator: ChemStation

Volume Inj. : 1 µl
 Signal #1 Phase : ZB-MR2 Signal #2 Phase: ZB-MR1
 Signal #1 Info : 30M x 0.32mm x0.2 Signal #2 Info : 30M x 0.32mm x0.5µm

Compound	RT#1	RT#2	Resp#1	Resp#2	ng/ml	ng/ml
----------	------	------	--------	--------	-------	-------

 System Monitoring Compounds

Target Compounds

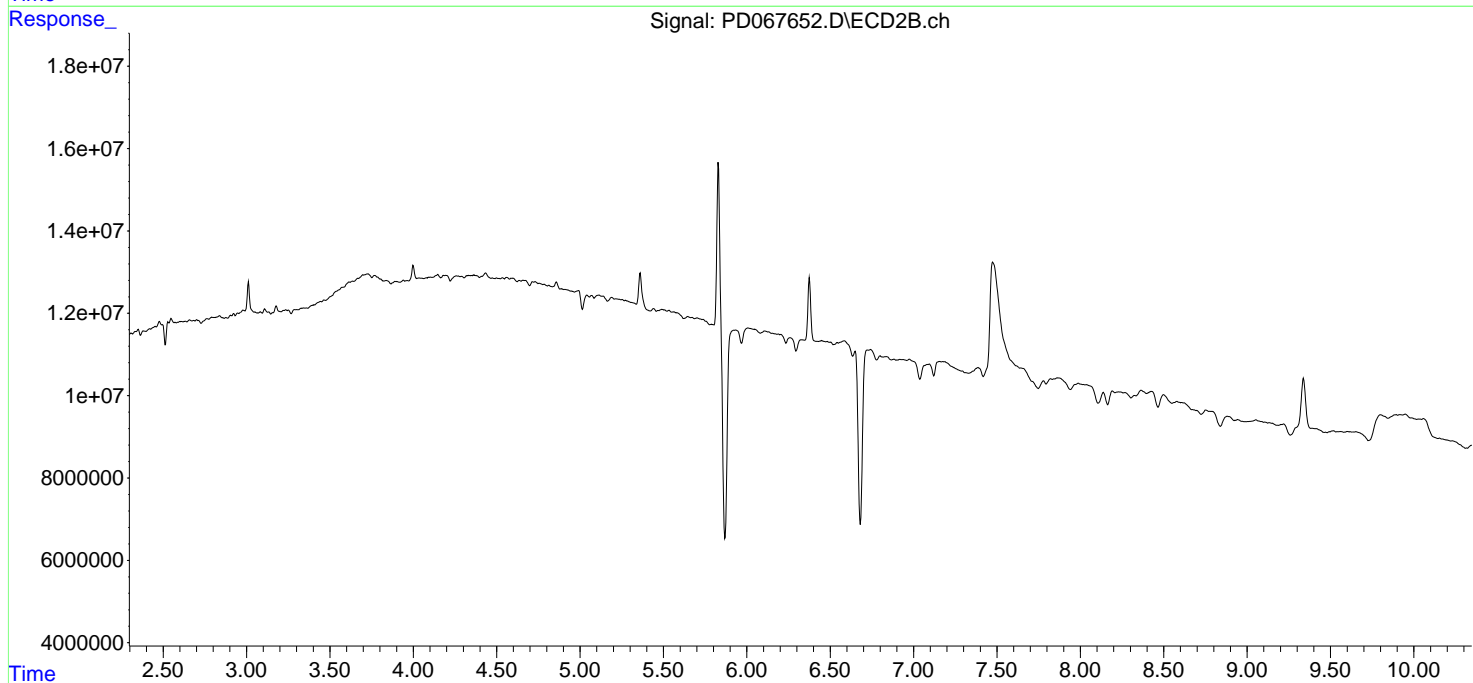
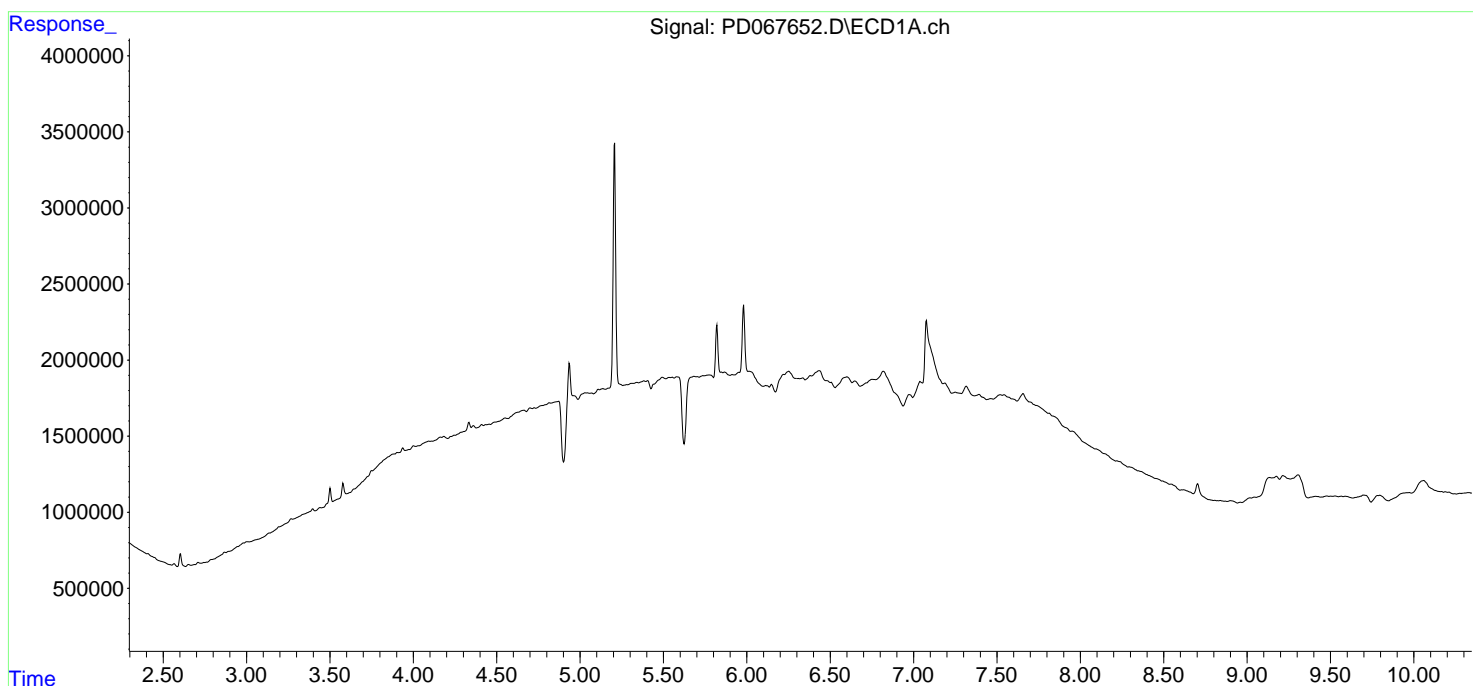
(f)=RT Delta > 1/2 Window (#)=Amounts differ by > 25% (m)=manual int.

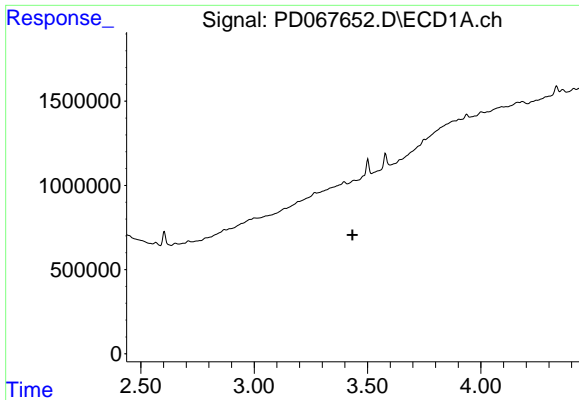
Data Path : Z:\pestpcbsrv\HPCHEM1\ECD_D\Data\PD011022\
 Data File : PD067652.D
 Signal(s) : Signal #1: ECD1A.ch Signal #2: ECD2B.ch
 Acq On : 10 Jan 2022 08:16
 Operator : AR\AJ
 Sample : HEXANE
 Misc :
 ALS Vial : 1 Sample Multiplier: 1

Instrument :
 ECD_D
ClientSampleId :
 HEXANE

Integration File signal 1: autoint1.e
 Integration File signal 2: autoint2.e
 Quant Time: Jan 11 00:52:52 2022
 Quant Method : Z:\pestpcbsrv\HPCHEM1\ECD_L\methods\PD122821.M
 Quant Title : GC Extractables
 QLast Update : Tue Dec 28 03:00:50 2021
 Response via : Initial Calibration
 Integrator: ChemStation

Volume Inj. : 1 µl
 Signal #1 Phase : ZB-MR2 Signal #2 Phase: ZB-MR1
 Signal #1 Info : 30M x 0.32mm x0.2 Signal #2 Info : 30M x 0.32mm x0.5µm

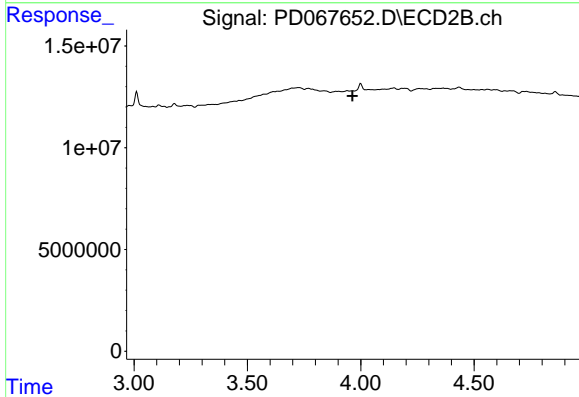




#1 Tetrachloro-m-xylene

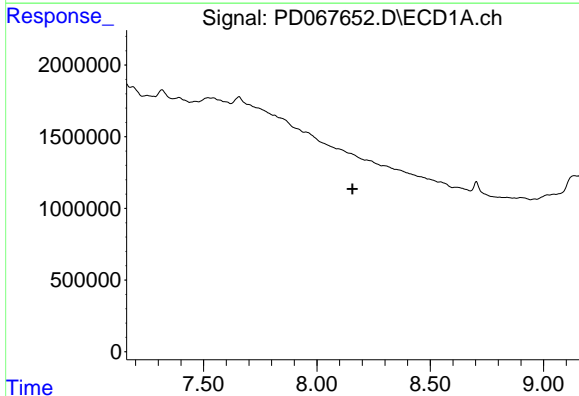
R.T.: 0.000 min
 Exp R.T. : 3.434 min
 Response: 0
 Conc: N.D.

Instrument :
 ECD_D
 ClientSampleId :
 HEXANE



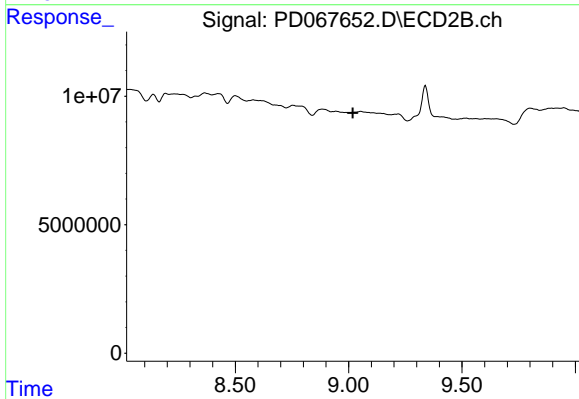
#1 Tetrachloro-m-xylene

R.T.: 0.000 min
 Exp R.T. : 3.964 min
 Response: 0
 Conc: N.D.



#28 Decachlorobiphenyl

R.T.: 0.000 min
 Exp R.T. : 8.157 min
 Response: 0
 Conc: N.D.



#28 Decachlorobiphenyl

R.T.: 0.000 min
 Exp R.T. : 9.019 min
 Response: 0
 Conc: N.D.