

Data Path : Z:\pestpcbsrv\HPCHEM1\ECD\_D\Data\PD011022\  
 Data File : PD067657.D  
 Signal(s) : Signal #1: ECD1A.ch Signal #2: ECD2B.ch  
 Acq On : 10 Jan 2022 12:23  
 Operator : AR\AJ  
 Sample : N1071-02DL 5X  
 Misc :  
 ALS Vial : 6 Sample Multiplier: 1

**Instrument :**  
 ECD\_D  
**ClientSampleId :**  
 FM-E1-01-4.5DL

**Manual Integrations**  
**APPROVED**  
 Reviewed By :Abdul Mirza 01/11/2022  
 Supervised By :Ankita Jodhani 01/13/2022

Integration File signal 1: autoint1.e  
 Integration File signal 2: autoint2.e  
 Quant Time: Jan 11 00:57:57 2022  
 Quant Method : Z:\pestpcbsrv\HPCHEM1\ECD\_L\methods\PD122821.M  
 Quant Title : GC Extractables  
 QLast Update : Tue Dec 28 03:00:50 2021  
 Response via : Initial Calibration  
 Integrator: ChemStation

Volume Inj. : 1 µl  
 Signal #1 Phase : ZB-MR2 Signal #2 Phase: ZB-MR1  
 Signal #1 Info : 30M x 0.32mm x0.2 Signal #2 Info : 30M x 0.32mm x0.5µm

Compound	RT#1	RT#2	Resp#1	Resp#2	ng/ml	ng/ml
-----						
System Monitoring Compounds						
1) SA Tetrachlo...	3.436	3.959	7270701	28674045	4.001	4.346
28) SA Decachlor...	8.160	9.015	2545036	13953684	2.865	2.936
Target Compounds						
10) B gamma-Chl...	5.358	6.063	8408611	20494145	3.401	3.159m
11) B alpha-Chl...	5.415	6.137	10474234	80329170	4.332	12.392 #
12) B 4,4'-DDE	5.580	6.297	15995675	44112226	7.225	7.162
16) A 4,4'-DDD	6.095	6.792	263.8E6	630.5E6	153.535	125.953
17) MA 4,4'-DDT	6.335	7.089	6531.4E6	14113.2E6	3997.165	2637.512 #
-----						

(f)=RT Delta > 1/2 Window (#)=Amounts differ by > 25% (m)=manual int.

Data Path : Z:\pestpcbsrv\HPCHEM1\ECD\_D\Data\PD011022\  
 Data File : PD067657.D  
 Signal(s) : Signal #1: ECD1A.ch Signal #2: ECD2B.ch  
 Acq On : 10 Jan 2022 12:23  
 Operator : AR\AJ  
 Sample : N1071-02DL 5X  
 Misc :  
 ALS Vial : 6 Sample Multiplier: 1

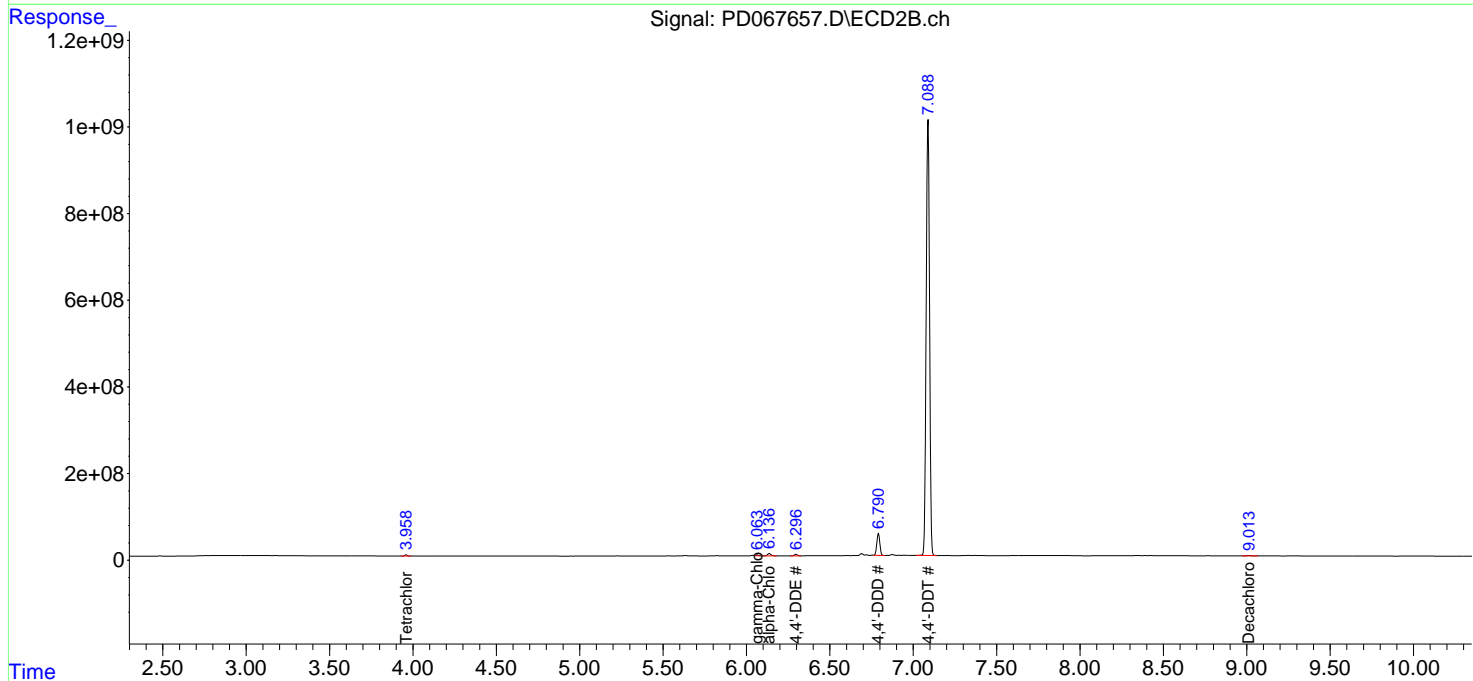
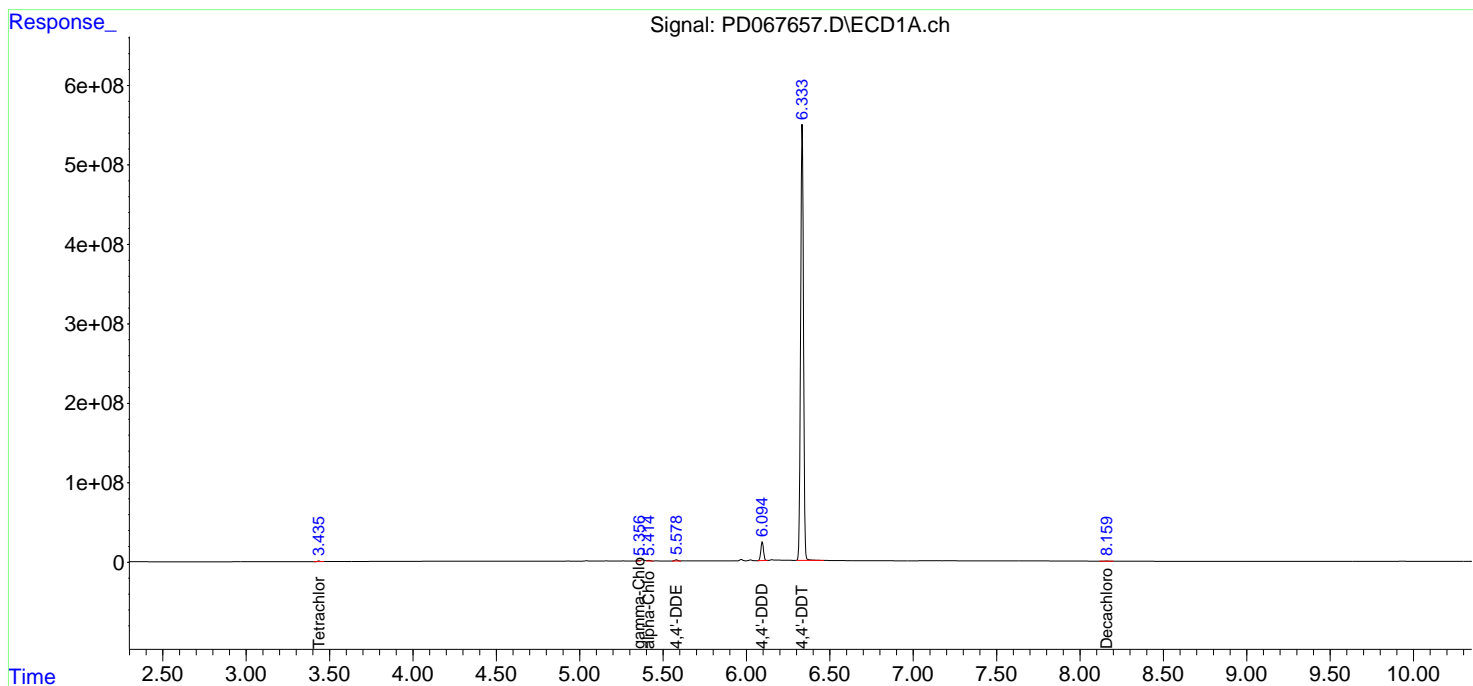
**Instrument :**  
 ECD\_D  
**ClientSampleId :**  
 FM-E1-01-4.5DL

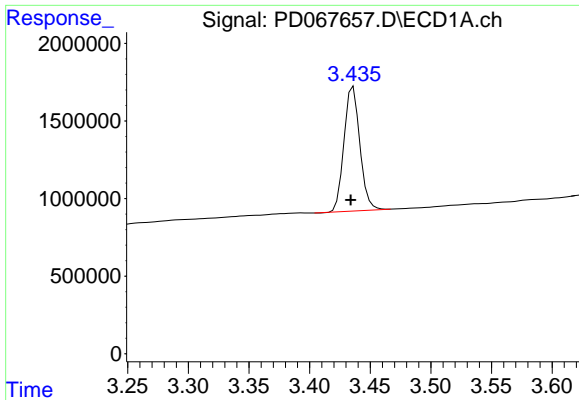
**Manual Integrations**  
**APPROVED**

Reviewed By :Abdul Mirza 01/11/2022  
 Supervised By :Ankita Jodhani 01/13/2022

Integration File signal 1: autoint1.e  
 Integration File signal 2: autoint2.e  
 Quant Time: Jan 11 00:57:57 2022  
 Quant Method : Z:\pestpcbsrv\HPCHEM1\ECD\_L\methods\PD122821.M  
 Quant Title : GC Extractables  
 QLast Update : Tue Dec 28 03:00:50 2021  
 Response via : Initial Calibration  
 Integrator: ChemStation

Volume Inj. : 1 µl  
 Signal #1 Phase : ZB-MR2 Signal #2 Phase: ZB-MR1  
 Signal #1 Info : 30M x 0.32mm x0.2 Signal #2 Info : 30M x 0.32mm x0.5µm

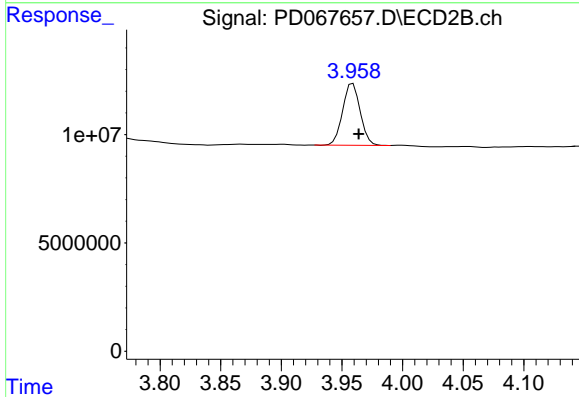




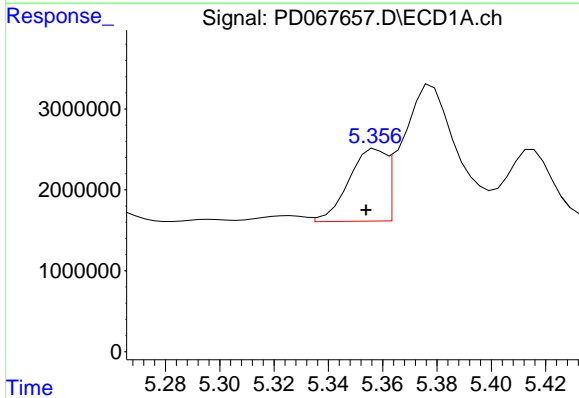
#1 Tetrachloro-m-xylene  
 R.T.: 3.436 min  
 Delta R.T.: 0.002 min  
 Response: 7270701  
 Conc: 4.00 ng/ml

Instrument : ECD\_D  
 ClientSampleId : FM-E1-01-4.5DL

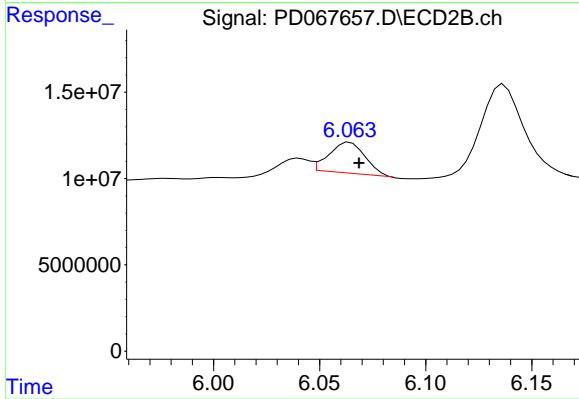
Manual Integrations  
**APPROVED**  
 Reviewed By :Abdul Mirza 01/11/2022  
 Supervised By :Ankita Jodhani 01/13/2022



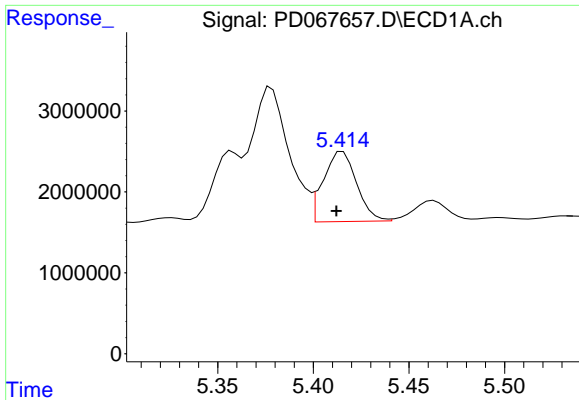
#1 Tetrachloro-m-xylene  
 R.T.: 3.959 min  
 Delta R.T.: -0.005 min  
 Response: 28674045  
 Conc: 4.35 ng/ml



#10 gamma-Chlordane  
 R.T.: 5.358 min  
 Delta R.T.: 0.004 min  
 Response: 8408611  
 Conc: 3.40 ng/ml



#10 gamma-Chlordane  
 R.T.: 6.063 min  
 Delta R.T.: -0.006 min  
 Response: 20494145  
 Conc: 3.16 ng/ml m



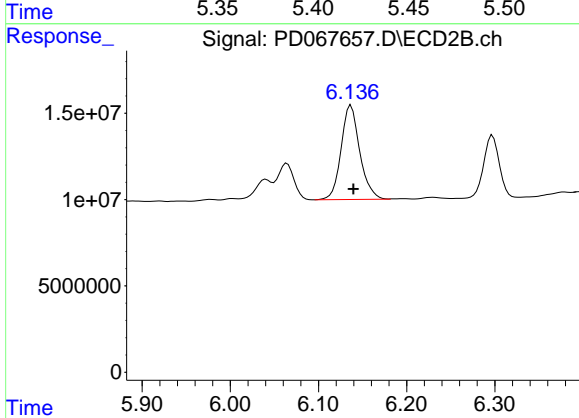
#11 alpha-Chlordane

R.T.: 5.415 min  
 Delta R.T.: 0.003 min  
 Response: 10474234  
 Conc: 4.33 ng/ml

Instrument :  
 ECD\_D  
 ClientSampleId :  
 FM-E1-01-4.5DL

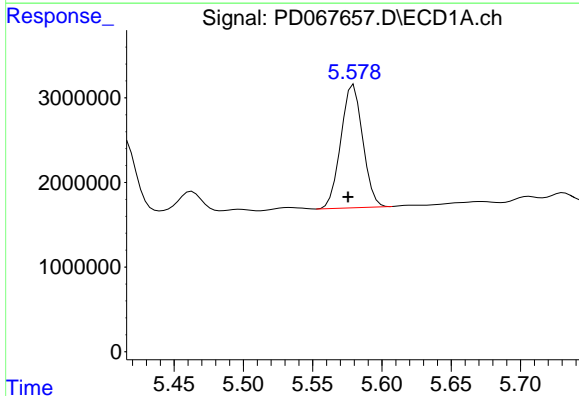
Manual Integrations  
 APPROVED

Reviewed By :Abdul Mirza 01/11/2022  
 Supervised By :Ankita Jodhani 01/13/2022



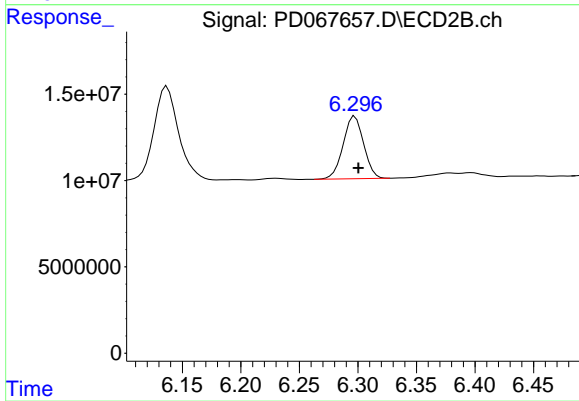
#11 alpha-Chlordane

R.T.: 6.137 min  
 Delta R.T.: -0.003 min  
 Response: 80329170  
 Conc: 12.39 ng/ml



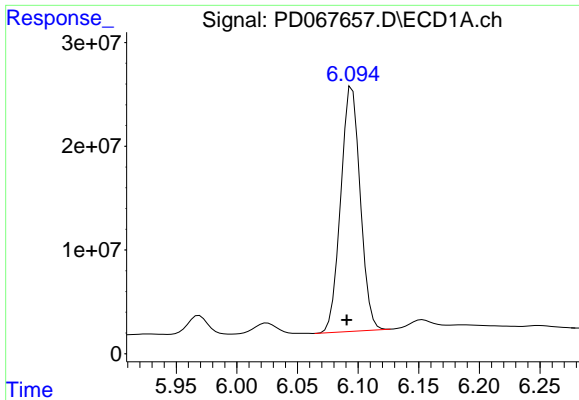
#12 4,4'-DDE

R.T.: 5.580 min  
 Delta R.T.: 0.004 min  
 Response: 15995675  
 Conc: 7.23 ng/ml



#12 4,4'-DDE

R.T.: 6.297 min  
 Delta R.T.: -0.003 min  
 Response: 44112226  
 Conc: 7.16 ng/ml



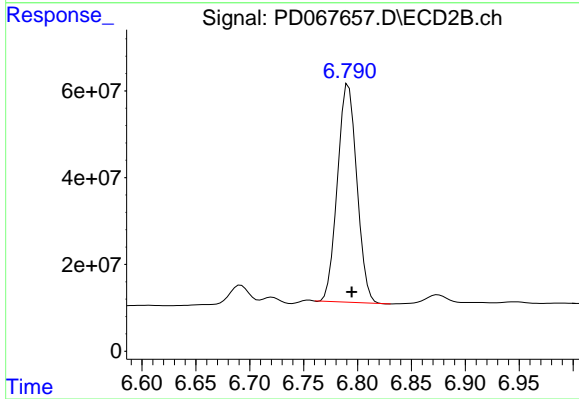
#16 4,4'-DDD

R.T.: 6.095 min  
Delta R.T.: 0.004 min  
Response: 263774620  
Conc: 153.54 ng/ml

Instrument :  
ECD\_D  
ClientSampleId :  
FM-E1-01-4.5DL

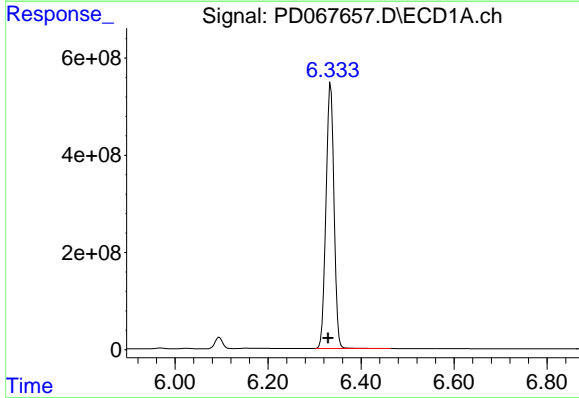
Manual Integrations  
APPROVED

Reviewed By :Abdul Mirza 01/11/2022  
Supervised By :Ankita Jodhani 01/13/2022



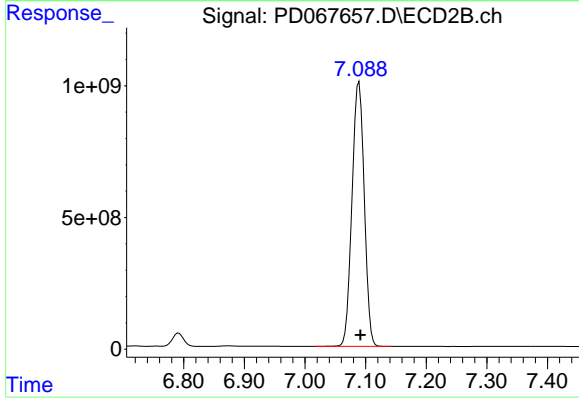
#16 4,4'-DDD

R.T.: 6.792 min  
Delta R.T.: -0.003 min  
Response: 630501314  
Conc: 125.95 ng/ml



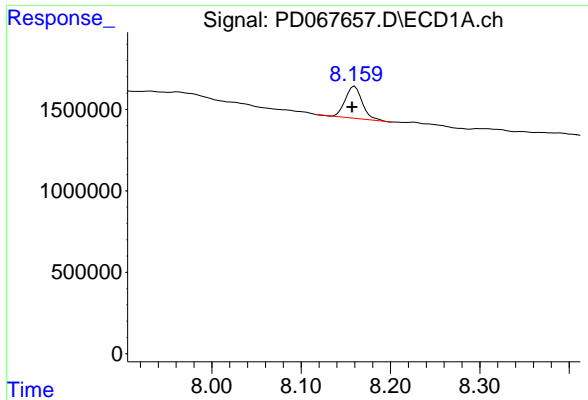
#17 4,4'-DDT

R.T.: 6.335 min  
Delta R.T.: 0.006 min  
Response: 6531422619  
Conc: 3997.16 ng/ml



#17 4,4'-DDT

R.T.: 7.089 min  
Delta R.T.: -0.002 min  
Response: 14113169161  
Conc: 2637.51 ng/ml



#28 Decachlorobiphenyl

R.T.: 8.160 min  
 Delta R.T.: 0.003 min  
 Response: 2545036  
 Conc: 2.87 ng/ml

Instrument :

ECD\_D

ClientSampleId :

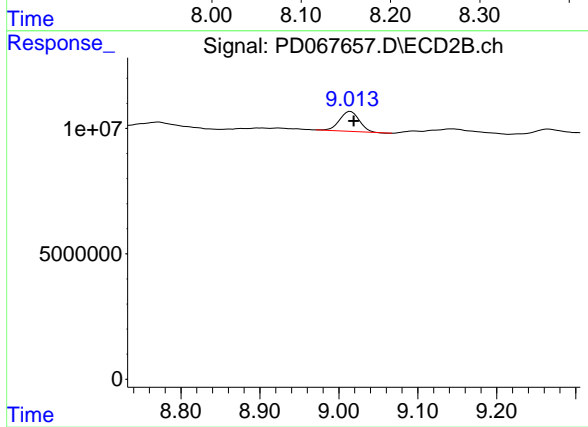
FM-E1-01-4.5DL

Manual Integrations

APPROVED

Reviewed By :Abdul Mirza 01/11/2022

Supervised By :Ankita Jodhani 01/13/2022



#28 Decachlorobiphenyl

R.T.: 9.015 min  
 Delta R.T.: -0.004 min  
 Response: 13953684  
 Conc: 2.94 ng/ml