

Data Path : Z:\pestpcbsrv\HPCHEM1\ECD\_D\Data\PD011024\  
 Data File : PD080744.D  
 Signal(s) : Signal #1: ECD1A.ch Signal #2: ECD2B.ch  
 Acq On : 10 Jan 2024 12:48  
 Operator : AR\AJ  
 Sample : INDA501  
 Misc :  
 ALS Vial : 17 Sample Multiplier: 1

Instrument :  
 ECD\_D  
 ClientSampleId :  
 INDA5080

Integration File signal 1: autoint1.e  
 Integration File signal 2: autoint2.e  
 Quant Time: Jan 10 13:32:08 2024  
 Quant Method : Z:\pestpcbsrv\HPCHEM1\ECD\_D\Method\PD011024CLP.M  
 Quant Title : GC Extractables  
 QLast Update : Wed Jan 10 13:26:45 2024  
 Response via : Initial Calibration  
 Integrator: ChemStation

Volume Inj. : 1 µl  
 Signal #1 Phase : ZB-MR1 Signal #2 Phase: ZB-MR2  
 Signal #1 Info : 30M x 0.32mm x0.5 Signal #2 Info : 30M x 0.32mm x 0.25µm

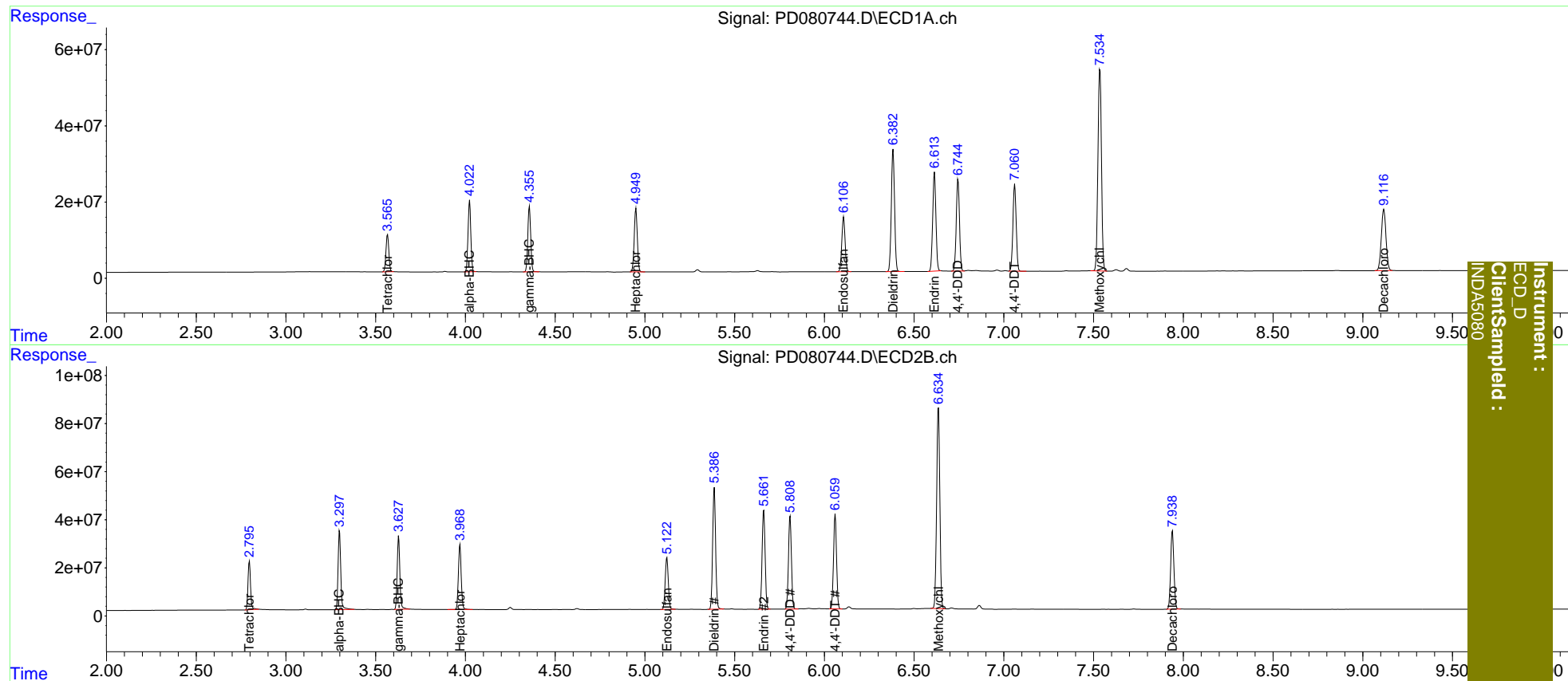
Compound	RT#1	RT#2	Resp#1	Resp#2	ng/ml	ng/ml
-----						
System Monitoring Compounds						
1) SA Tetrachlo...	3.566	2.797	108.8E6	199.6E6	78.492	79.577
27) SA Decachlor...	9.117	7.940	291.9E6	409.4E6	154.629	157.746
Target Compounds						
2) A alpha-BHC	4.023	3.299	202.6E6	342.3E6	83.721	82.376
3) MA gamma-BHC...	4.357	3.628	193.4E6	315.3E6	83.344	81.730
4) MA Heptachlor	4.950	3.970	199.2E6	299.3E6	82.171	81.038
9) A Endosulfan I	6.108	5.123	181.9E6	255.5E6	84.429	80.242
13) MA Dieldrin	6.383	5.387	405.2E6	581.0E6	173.704	162.654
14) MA Endrin	6.614	5.663	324.7E6	482.4E6	171.416	161.332
16) A 4,4'-DDD	6.745	5.809	300.8E6	445.3E6	172.876	162.887
17) MA 4,4'-DDT	7.061	6.061	288.6E6	459.9E6	165.240	165.194
20) A Methoxychlor	7.536	6.636	725.4E6	1040.7E6	795.636	761.562
-----						

(f)=RT Delta > 1/2 Window (#)=Amounts differ by > 25% (m)=manual int.

Data Path : Z:\pestpcbsrv\HPCHEM1\ECD\_D\Data\PD011024\  
 Data File : PD080744.D  
 Signal(s) : Signal #1: ECD1A.ch Signal #2: ECD2B.ch  
 Acq On : 10 Jan 2024 12:48  
 Operator : AR\AJ  
 Sample : INDA501  
 Misc :  
 ALS Vial : 17 Sample Multiplier: 1

Integration File signal 1: autoint1.e  
 Integration File signal 2: autoint2.e  
 Quant Time: Jan 10 13:32:08 2024  
 Quant Method : Z:\pestpcbsrv\HPCHEM1\ECD\_D\Method\PD011024CLP.M  
 Quant Title : GC Extractables  
 QLast Update : Wed Jan 10 13:26:45 2024  
 Response via : Initial Calibration  
 Integrator: ChemStation

Volume Inj. : 1 µl  
 Signal #1 Phase : ZB-MR1 Signal #2 Phase: ZB-MR2  
 Signal #1 Info : 30M x 0.32mm x0.5 Signal #2 Info : 30M x 0.32mm x 0.25µm



Instrument :  
 ECD\_D  
 ClientSampleId :  
 INDA5080