

Data Path : Z:\pestpcbsrv\HPCHEM1\ECD_D\Data\PD011124\
 Data File : PD080768.D
 Signal(s) : Signal #1: ECD1A.ch Signal #2: ECD2B.ch
 Acq On : 10 Jan 2024 19:14
 Operator : AR\AJ
 Sample : INDB601
 Misc :
 ALS Vial : 21 Sample Multiplier: 1

Instrument :
 ECD_D
 ClientSampleId :
 INDB6099

Integration File signal 1: autoint1.e
 Integration File signal 2: autoint2.e
 Quant Time: Jan 11 00:50:16 2024
 Quant Method : Z:\pestpcbsrv\HPCHEM1\ECD_D\Method\PD011124CLP-TCLP.M
 Quant Title : GC Extractables
 QLast Update : Thu Jan 11 00:46:44 2024
 Response via : Initial Calibration
 Integrator: ChemStation

Volume Inj. : 1 µl
 Signal #1 Phase : ZB-MR2 Signal #2 Phase: ZB-MR1
 Signal #1 Info : 30M x 0.32mm x0.2 Signal #2 Info : 30M x 0.32mm x 0.50µm

	Compound	RT#1	RT#2	Resp#1	Resp#2	ng/ml	ng/ml

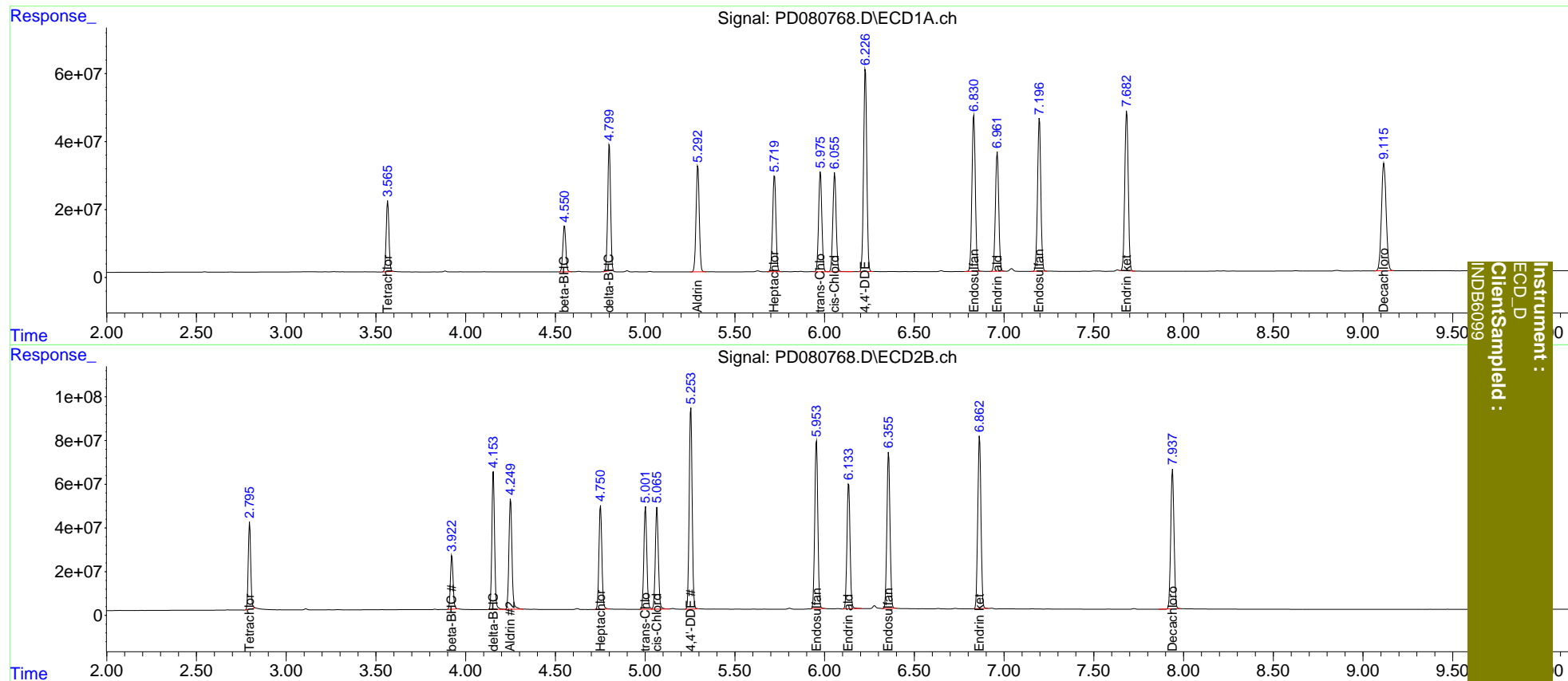
System Monitoring Compounds							
1)	SA Tetrachlo...	3.566	2.797	222.8E6	382.7E6	163.352	159.081
27)	SA Decachlor...	9.117	7.939	579.0E6	809.3E6	300.237	310.673
Target Compounds							
5)	MB Aldrin	5.294	4.250	388.7E6	597.5E6	173.726	166.798
6)	B beta-BHC	4.551	3.924	154.0E6	254.7E6	152.918	152.237
7)	B delta-BHC	4.801	4.154	413.5E6	671.9E6	186.942	173.026
8)	B Heptachlo...	5.721	4.752	361.0E6	543.0E6	164.707	161.104
10)	B trans-Chl...	5.977	5.002	367.1E6	543.1E6	172.327	167.635
11)	B cis-Chlor...	6.056	5.066	370.1E6	547.8E6	168.057	163.441
12)	B 4,4'-DDE	6.227	5.255	742.4E6	1054.1E6	361.905	341.412
15)	B Endosulfa...	6.831	5.955	601.5E6	915.2E6	324.885	322.401
18)	B Endrin al...	6.962	6.134	455.6E6	689.7E6	321.290	310.560
19)	B Endosulfa...	7.197	6.357	571.5E6	859.9E6	323.599	314.902
21)	B Endrin ke...	7.683	6.863	634.0E6	975.0E6	326.278	312.506

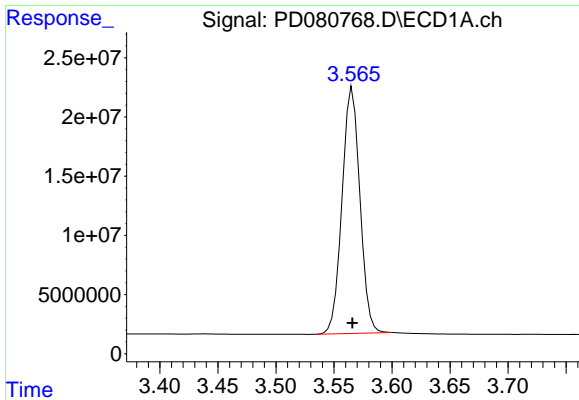
(f)=RT Delta > 1/2 Window (#)=Amounts differ by > 25% (m)=manual int.

Data Path : Z:\pestpcbsrv\HPCHEM1\ECD_D\Data\PD011124\
 Data File : PD080768.D
 Signal(s) : Signal #1: ECD1A.ch Signal #2: ECD2B.ch
 Acq On : 10 Jan 2024 19:14
 Operator : AR\AJ
 Sample : INDB601
 Misc :
 ALS Vial : 21 Sample Multiplier: 1

Integration File signal 1: autoint1.e
 Integration File signal 2: autoint2.e
 Quant Time: Jan 11 00:50:16 2024
 Quant Method : Z:\pestpcbsrv\HPCHEM1\ECD_D\Method\PD011124CLP-TCLP.M
 Quant Title : GC Extractables
 QLast Update : Thu Jan 11 00:46:44 2024
 Response via : Initial Calibration
 Integrator: ChemStation

Volume Inj. : 1 µl
 Signal #1 Phase : ZB-MR2 Signal #2 Phase: ZB-MR1
 Signal #1 Info : 30M x 0.32mm x0.2 Signal #2 Info : 30M x 0.32mm x 0.50µm

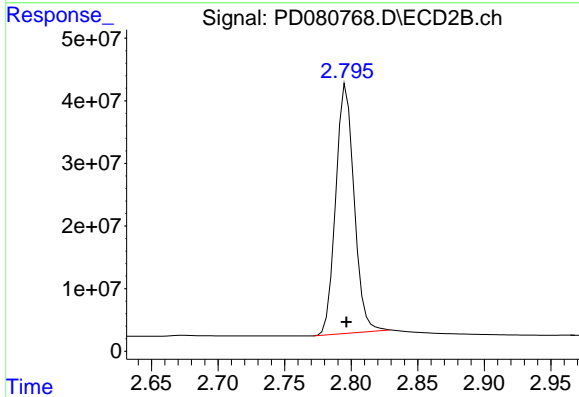




#1 Tetrachloro-m-xylene

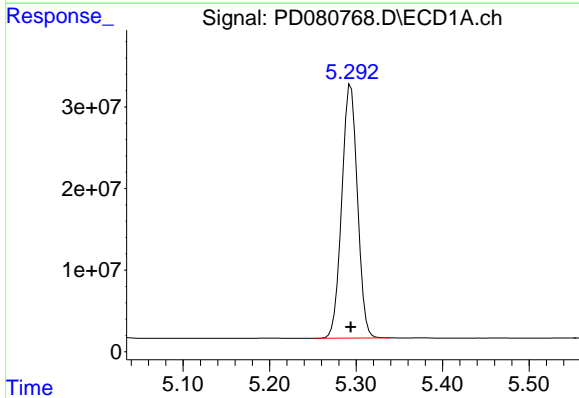
R.T.: 3.566 min
 Delta R.T.: 0.000 min
 Response: 222760889
 Conc: 163.35 ng/ml

Instrument :
 ECD_D
 ClientSampleId :
 INDB6099



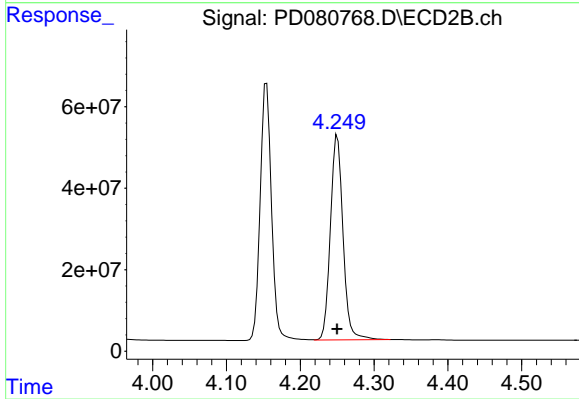
#1 Tetrachloro-m-xylene

R.T.: 2.797 min
 Delta R.T.: 0.000 min
 Response: 382656826
 Conc: 159.08 ng/ml



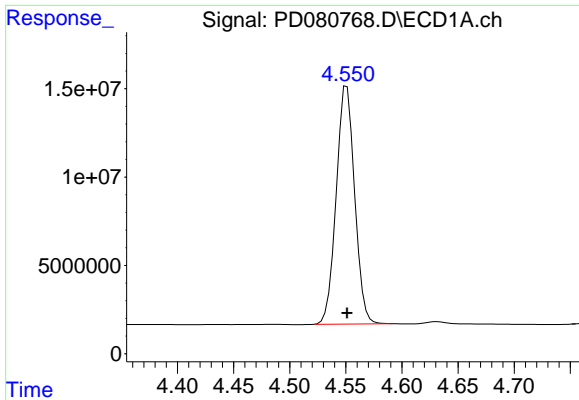
#5 Aldrin

R.T.: 5.294 min
 Delta R.T.: 0.000 min
 Response: 388652611
 Conc: 173.73 ng/ml



#5 Aldrin

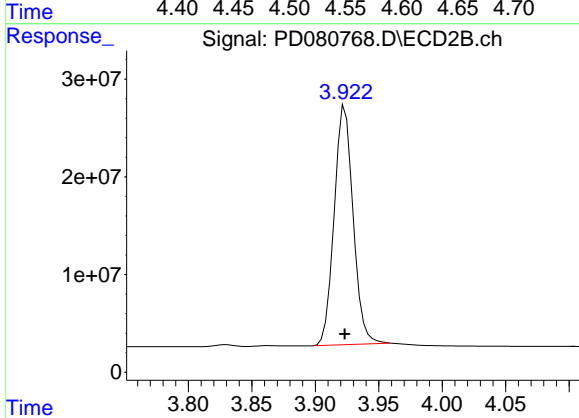
R.T.: 4.250 min
 Delta R.T.: 0.000 min
 Response: 597522222
 Conc: 166.80 ng/ml



#6 beta-BHC

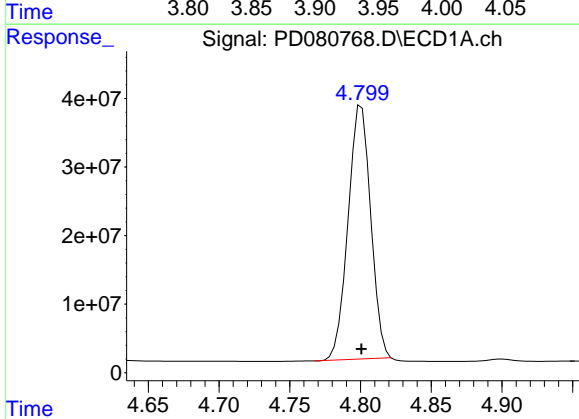
R.T.: 4.551 min
 Delta R.T.: 0.000 min
 Response: 154012183
 Conc: 152.92 ng/ml

Instrument :
 ECD_D
 ClientSampleId :
 INDB6099



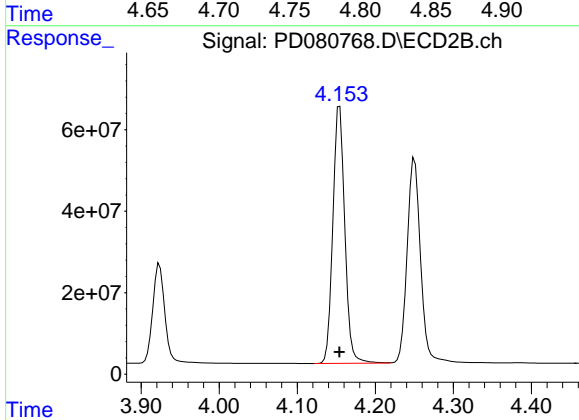
#6 beta-BHC

R.T.: 3.924 min
 Delta R.T.: 0.000 min
 Response: 254700852
 Conc: 152.24 ng/ml



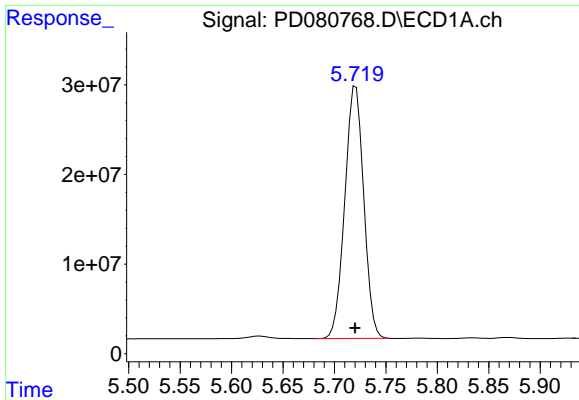
#7 delta-BHC

R.T.: 4.801 min
 Delta R.T.: 0.000 min
 Response: 413540957
 Conc: 186.94 ng/ml



#7 delta-BHC

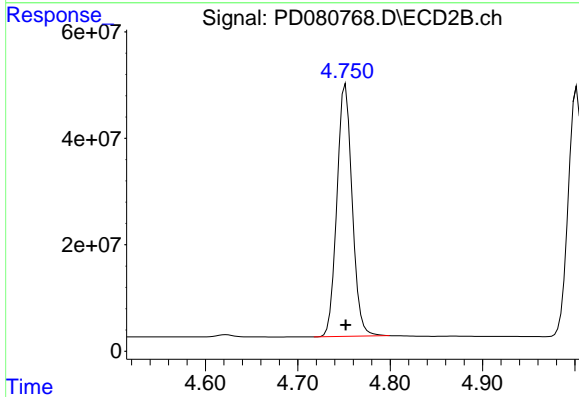
R.T.: 4.154 min
 Delta R.T.: 0.000 min
 Response: 671866561
 Conc: 173.03 ng/ml



#8 Heptachlor epoxide

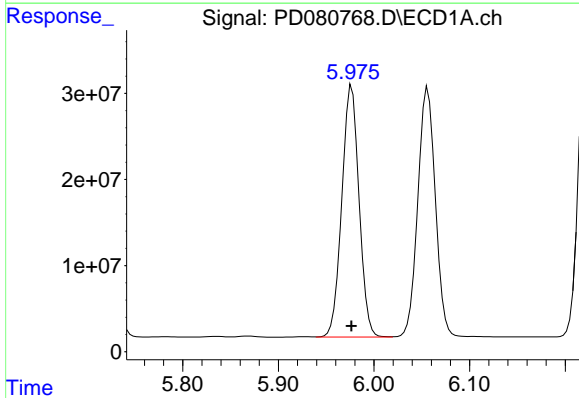
R.T.: 5.721 min
 Delta R.T.: 0.000 min
 Response: 361014311
 Conc: 164.71 ng/ml

Instrument :
 ECD_D
 ClientSampleId :
 INDB6099



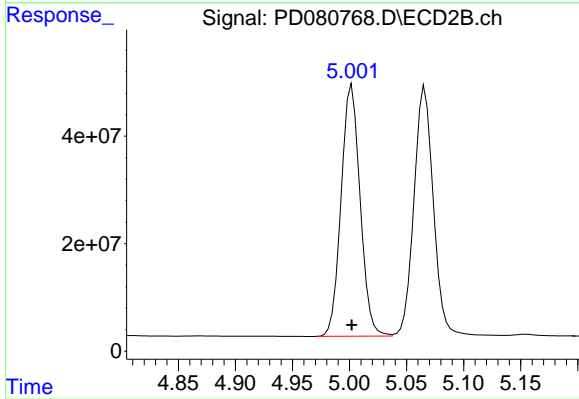
#8 Heptachlor epoxide

R.T.: 4.752 min
 Delta R.T.: 0.000 min
 Response: 543010592
 Conc: 161.10 ng/ml



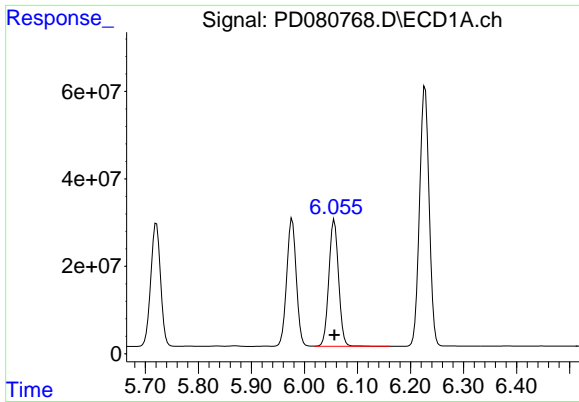
#10 trans-Chlordane

R.T.: 5.977 min
 Delta R.T.: 0.000 min
 Response: 367115523
 Conc: 172.33 ng/ml



#10 trans-Chlordane

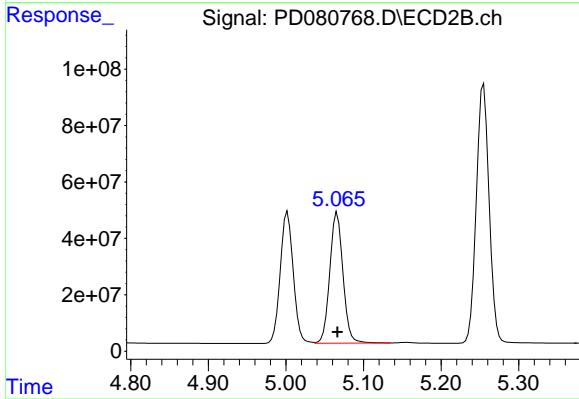
R.T.: 5.002 min
 Delta R.T.: 0.000 min
 Response: 543106007
 Conc: 167.63 ng/ml



#11 cis-Chlordane

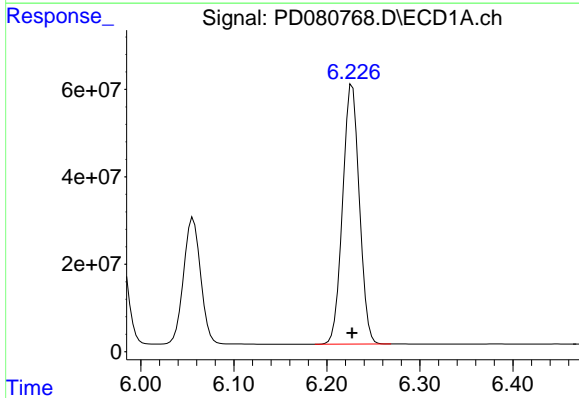
R.T.: 6.056 min
 Delta R.T.: 0.000 min
 Response: 370106054
 Conc: 168.06 ng/ml

Instrument :
 ECD_D
 ClientSampleId :
 INDB6099



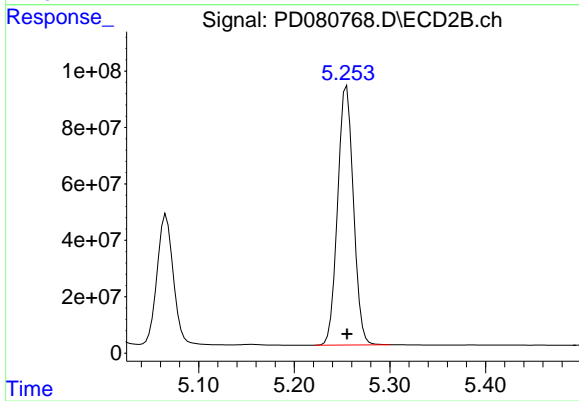
#11 cis-Chlordane

R.T.: 5.066 min
 Delta R.T.: 0.000 min
 Response: 547752215
 Conc: 163.44 ng/ml



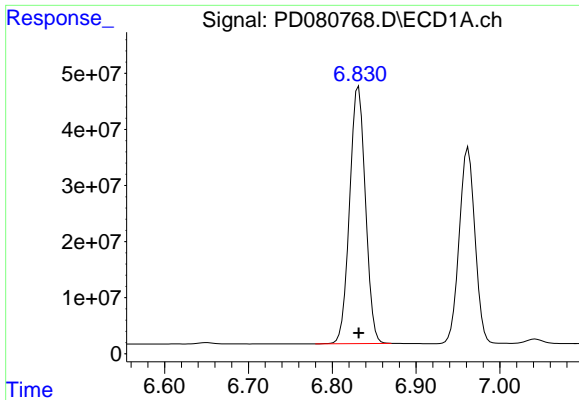
#12 4,4'-DDE

R.T.: 6.227 min
 Delta R.T.: 0.000 min
 Response: 742412557
 Conc: 361.90 ng/ml



#12 4,4'-DDE

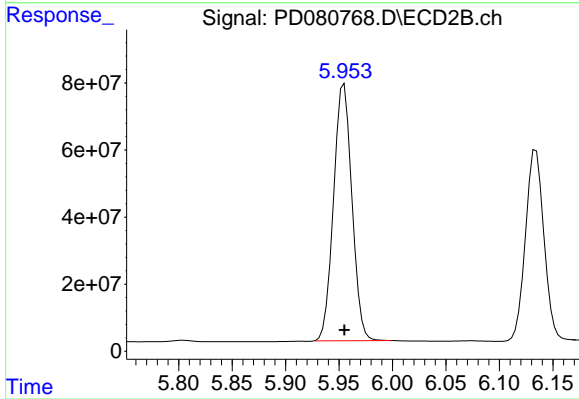
R.T.: 5.255 min
 Delta R.T.: 0.000 min
 Response: 1054098187
 Conc: 341.41 ng/ml



#15 Endosulfan II

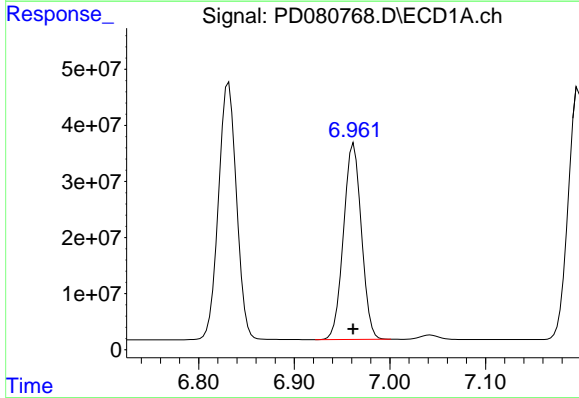
R.T.: 6.831 min
 Delta R.T.: 0.000 min
 Response: 601501180
 Conc: 324.89 ng/ml

Instrument :
 ECD_D
 ClientSampleId :
 INDB6099



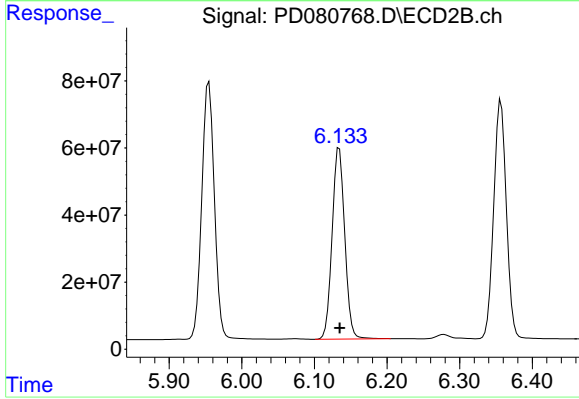
#15 Endosulfan II

R.T.: 5.955 min
 Delta R.T.: 0.000 min
 Response: 915218452
 Conc: 322.40 ng/ml



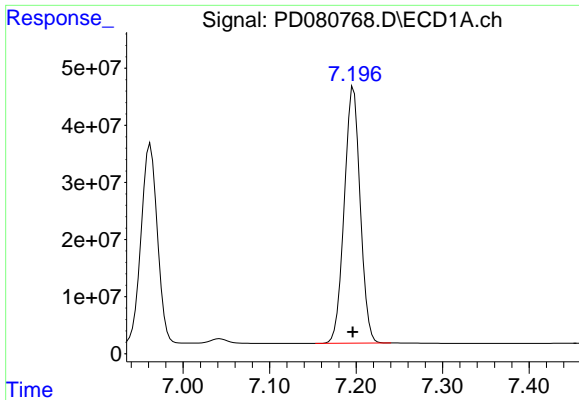
#18 Endrin aldehyde

R.T.: 6.962 min
 Delta R.T.: 0.000 min
 Response: 455617341
 Conc: 321.29 ng/ml



#18 Endrin aldehyde

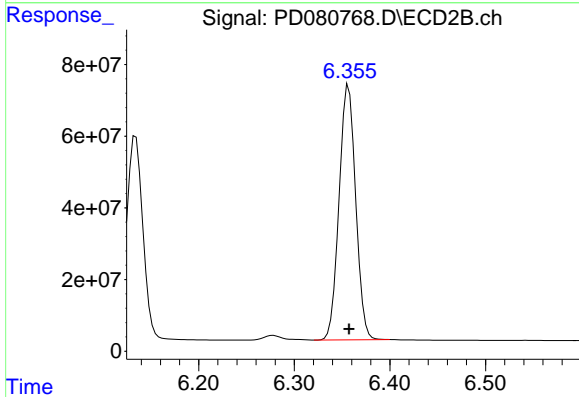
R.T.: 6.134 min
 Delta R.T.: 0.000 min
 Response: 689663059
 Conc: 310.56 ng/ml



#19 Endosulfan Sulfate

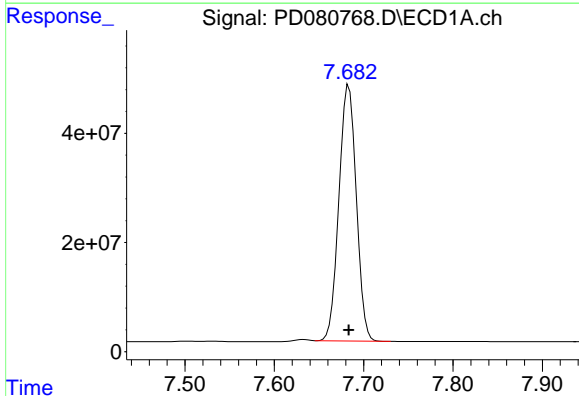
R.T.: 7.197 min
 Delta R.T.: 0.000 min
 Response: 571464597
 Conc: 323.60 ng/ml

Instrument :
 ECD_D
 ClientSampleId :
 INDB6099



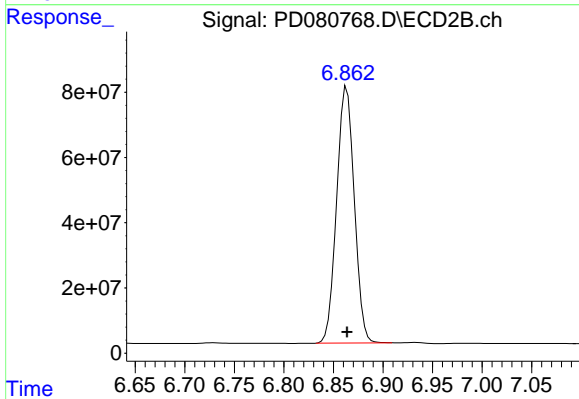
#19 Endosulfan Sulfate

R.T.: 6.357 min
 Delta R.T.: 0.000 min
 Response: 859932991
 Conc: 314.90 ng/ml



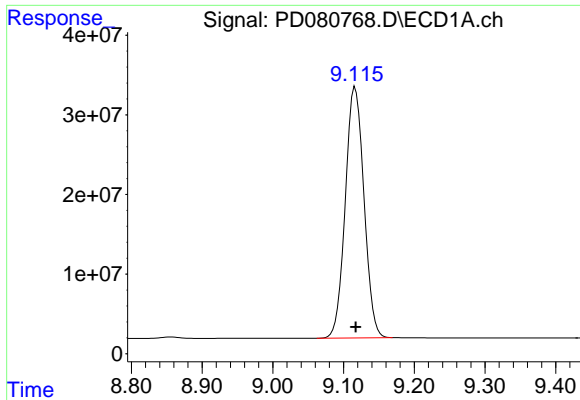
#21 Endrin ketone

R.T.: 7.683 min
 Delta R.T.: 0.000 min
 Response: 634045644
 Conc: 326.28 ng/ml



#21 Endrin ketone

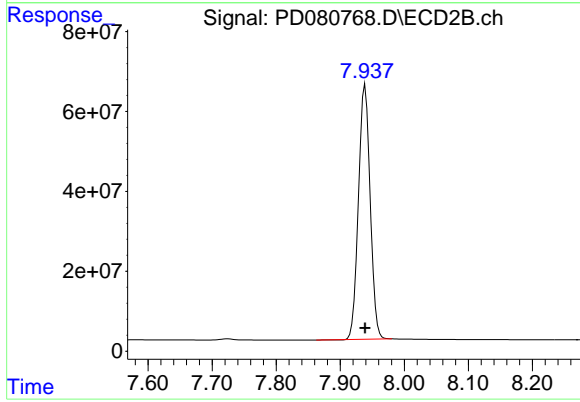
R.T.: 6.863 min
 Delta R.T.: 0.000 min
 Response: 975005014
 Conc: 312.51 ng/ml



#27 Decachlorobiphenyl

R.T.: 9.117 min
Delta R.T.: 0.000 min
Response: 579013915
Conc: 300.24 ng/ml

Instrument :
ECD_D
ClientSampleId :
INDB6099



#27 Decachlorobiphenyl

R.T.: 7.939 min
Delta R.T.: 0.000 min
Response: 809305980
Conc: 310.67 ng/ml