

Data Path : Z:\pestpcbsrv\HPCHEM1\ECD\_D\Data\PD011221\  
 Data File : PD060992.D  
 Signal(s) : Signal #1: ECD1A.ch Signal #2: ECD2B.ch  
 Acq On : 12 Jan 2021 13:19  
 Operator : DD\AJ  
 Sample : INDA302  
 Misc :  
 ALS Vial : 12 Sample Multiplier: 1

Instrument :  
 ECD\_D  
 ClientSampled :  
 INDA3004

Integration File signal 1: autoint1.e  
 Integration File signal 2: autoint2.e  
 Quant Time: Jan 13 00:43:50 2021  
 Quant Method : Z:\pestpcbsrv\HPCHEM1\ECD\_D\Method\PD010721CLP.M  
 Quant Title : GC Extractables  
 QLast Update : Fri Jan 08 03:28:22 2021  
 Response via : Initial Calibration  
 Integrator: ChemStation

Volume Inj. : 1 µl  
 Signal #1 Phase : ZB-MR2 Signal #2 Phase: ZB-MR1  
 Signal #1 Info : 30M x 0.32mm x0.2 Signal #2 Info : 30M x 0.32mm x 0.50µm

Compound	RT#1	RT#2	Resp#1	Resp#2	ng/ml	ng/ml
-----						
System Monitoring Compounds						
1) SA Tetrachlo...	3.498	4.021	25432482	131.8E6	19.160	18.978
27) SA Decachlor...	8.280	9.105	51561245	189.2E6	32.044	30.684
Target Compounds						
2) A alpha-BHC	3.939	4.412	37462911	197.1E6	19.217	18.500
3) MA gamma-BHC...	4.224	4.697	35325501	177.7E6	18.891	18.137
4) MA Heptachlor	4.529	5.209	37248658	174.1E6	18.395	17.698
5) MB Aldrin	0.000	5.515	0	3302161	N.D.	0.358
6) B beta-BHC	0.000	4.911f	0	1595702	N.D.	0.402
7) B delta-BHC	0.000	5.083	0	360605	N.D.	<MDL
8) B Heptachlo...	5.177f	5.895	605417	2315671	0.335	0.282
9) A Endosulfan I	5.567	6.260	31511768	132.1E6	17.990	16.951
11) B cis-Chlor...	5.567f	6.260f	31511768	132.1E6	17.046	16.064
13) MA Dieldrin	5.811	6.517	67470502	283.3E6	34.975	33.762
14) MA Endrin	6.069	6.736	50490961	199.3E6	31.935	30.686
15) B Endosulfa...	6.341	6.951	171313	1446752	0.120	0.233 #
16) A 4,4'-DDD	6.193	6.855	52778044	210.6E6	37.734	36.112
17) MA 4,4'-DDT	6.436	7.154	53456575	201.5E6	34.320	32.630
18) B Endrin al...	6.511	7.069	1364687	3676680	1.097	0.699 #
19) B Endosulfa...	0.000	7.250f	0	6350337	N.D.	1.029
20) A Methoxychlor	6.983	7.612	135.4E6	478.2E6	177.210	167.910
21) B Endrin ke...	7.218	7.763	4835275	20028914	2.909	3.087
22) Toxaphene-1	5.811	6.466	67470502	2036585	4261.330	38.681 #
23) Toxaphene-2	0.000	6.736	0	199.3E6	N.D.	3238.285
24) Toxaphene-3	6.193	7.154	52778044	201.5E6	2862.262	2304.624
25) Toxaphene-4	6.341	7.154	171313	201.5E6	4.127	841.228 #
26) Toxaphene-5	7.058	0.000	668846	0	14.942	N.D. #
-----						

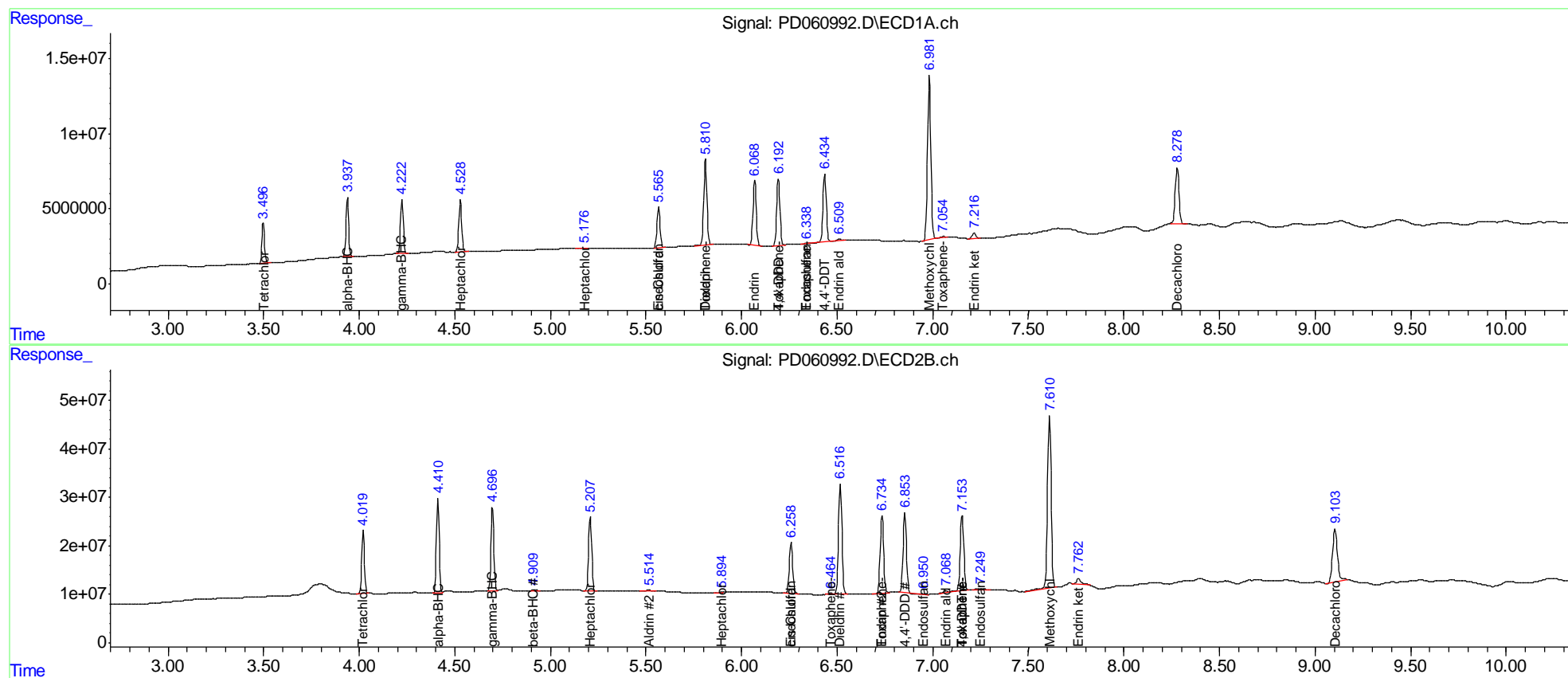
(f)=RT Delta > 1/2 Window (#)=Amounts differ by > 25% (m)=manual int.

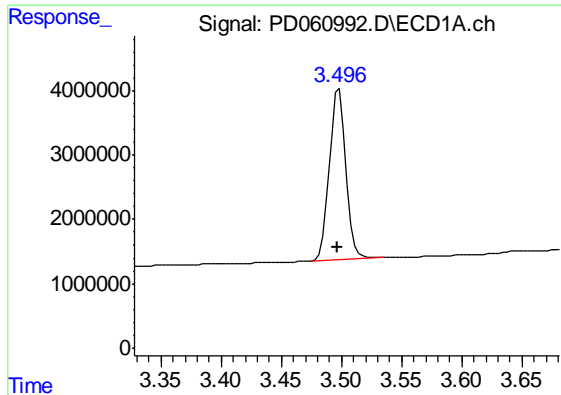
Data Path : Z:\pestpcbsrv\HPCHEM1\ECD\_D\Data\PD011221\  
 Data File : PD060992.D  
 Signal(s) : Signal #1: ECD1A.ch Signal #2: ECD2B.ch  
 Acq On : 12 Jan 2021 13:19  
 Operator : DD\AJ  
 Sample : INDA302  
 Misc :  
 ALS Vial : 12 Sample Multiplier: 1

Instrument :  
 ECD\_D  
 Client Sampled :  
 INDA3004

Integration File signal 1: autoint1.e  
 Integration File signal 2: autoint2.e  
 Quant Time: Jan 13 00:43:50 2021  
 Quant Method : Z:\pestpcbsrv\HPCHEM1\ECD\_D\Method\PD010721CLP.M  
 Quant Title : GC Extractables  
 QLast Update : Fri Jan 08 03:28:22 2021  
 Response via : Initial Calibration  
 Integrator: ChemStation

Volume Inj. : 1 µl  
 Signal #1 Phase : ZB-MR2 Signal #2 Phase: ZB-MR1  
 Signal #1 Info : 30M x 0.32mm x0.2 Signal #2 Info : 30M x 0.32mm x 0.50µm

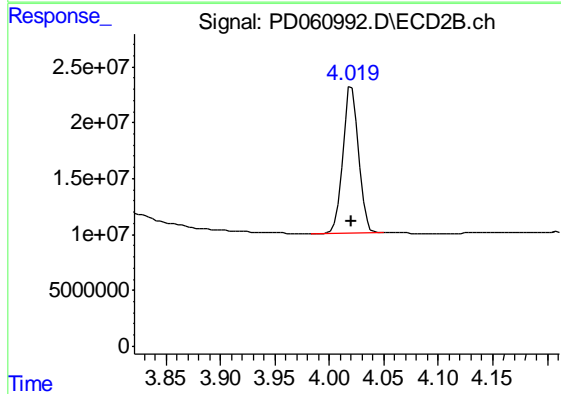




#1 Tetrachloro-m-xylene

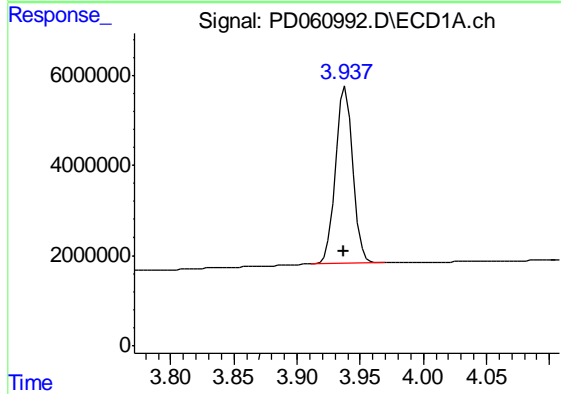
R.T.: 3.498 min  
 Delta R.T.: 0.000 min  
 Response: 25432482  
 Conc: 19.16 ng/ml

Instrument :  
 ECD\_D  
 ClientSampleId :  
 INDA3004



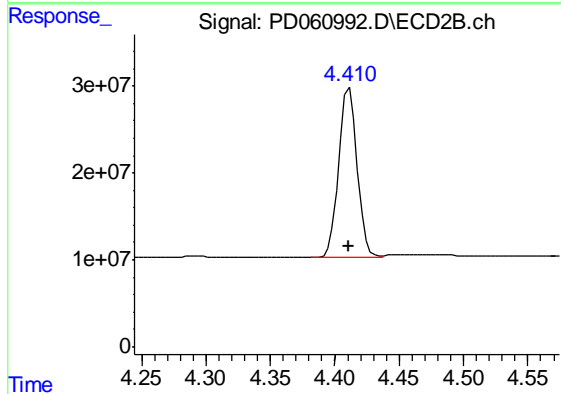
#1 Tetrachloro-m-xylene

R.T.: 4.021 min  
 Delta R.T.: 0.000 min  
 Response: 131791677  
 Conc: 18.98 ng/ml



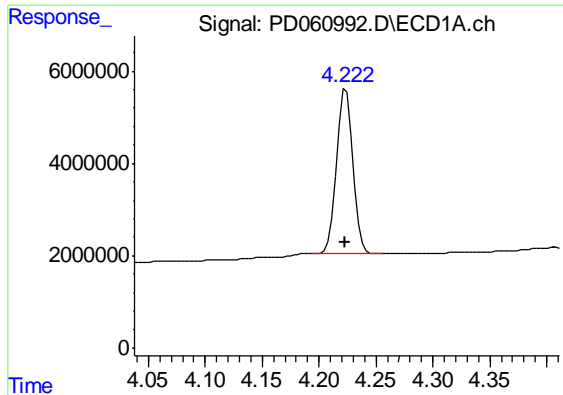
#2 alpha-BHC

R.T.: 3.939 min  
 Delta R.T.: 0.001 min  
 Response: 37462911  
 Conc: 19.22 ng/ml



#2 alpha-BHC

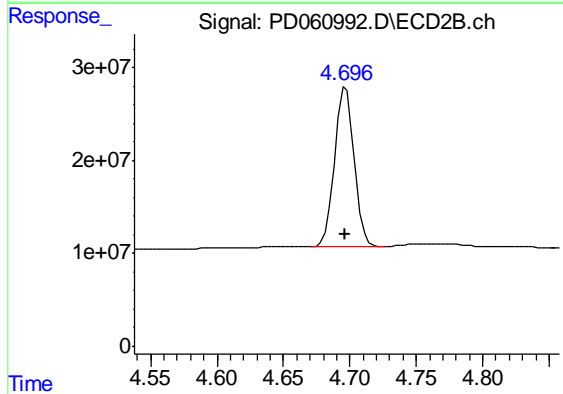
R.T.: 4.412 min  
 Delta R.T.: 0.000 min  
 Response: 197138997  
 Conc: 18.50 ng/ml



#3 gamma-BHC (Lindane)

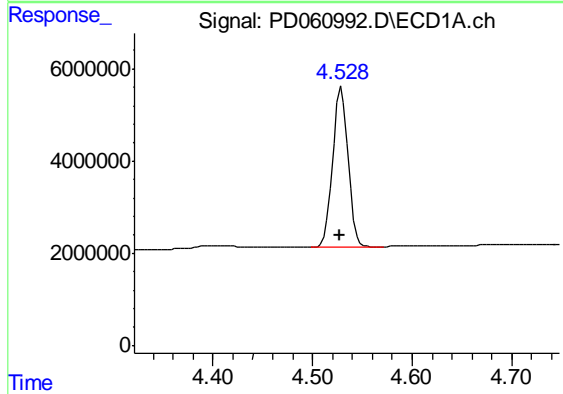
R.T.: 4.224 min  
Delta R.T.: 0.001 min  
Response: 35325501  
Conc: 18.89 ng/ml

Instrument :  
ECD\_D  
ClientSampleId :  
INDA3004



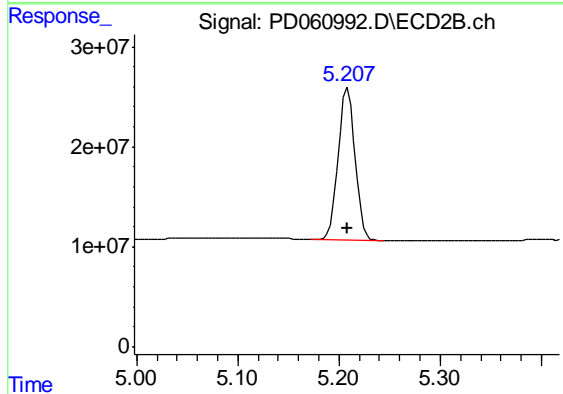
#3 gamma-BHC (Lindane)

R.T.: 4.697 min  
Delta R.T.: 0.000 min  
Response: 177719706  
Conc: 18.14 ng/ml



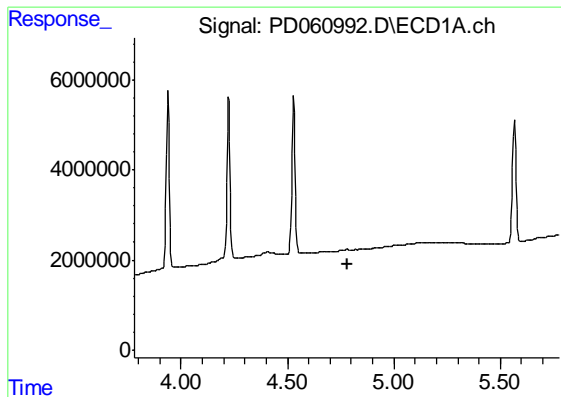
#4 Heptachlor

R.T.: 4.529 min  
Delta R.T.: 0.001 min  
Response: 37248658  
Conc: 18.39 ng/ml



#4 Heptachlor

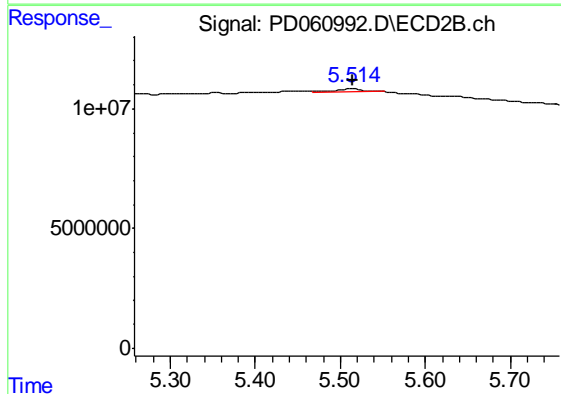
R.T.: 5.209 min  
Delta R.T.: 0.000 min  
Response: 174056571  
Conc: 17.70 ng/ml



#5 Aldrin

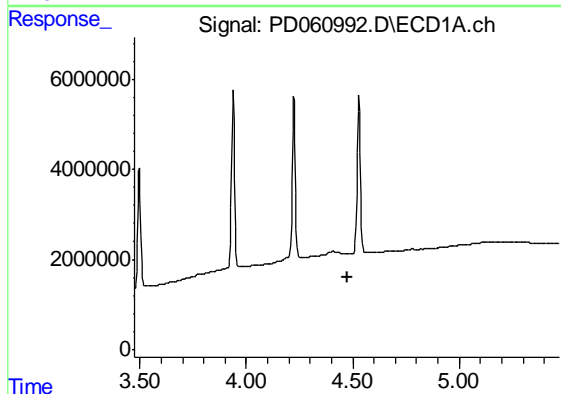
R.T.: 0.000 min  
 Exp R.T. : 4.780 min  
 Response: 0  
 Conc: N.D.

Instrument :  
 ECD\_D  
 ClientSampleId :  
 INDA3004



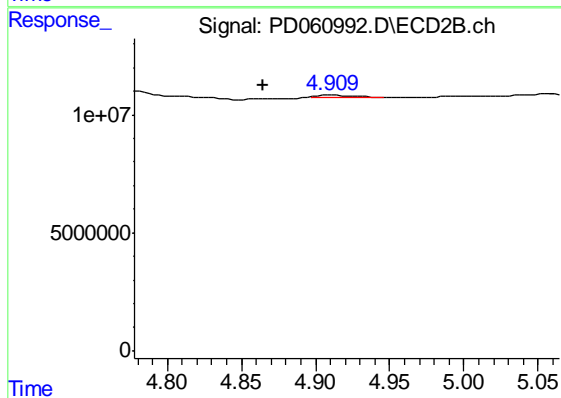
#5 Aldrin

R.T.: 5.515 min  
 Delta R.T.: 0.000 min  
 Response: 3302161  
 Conc: 0.36 ng/ml



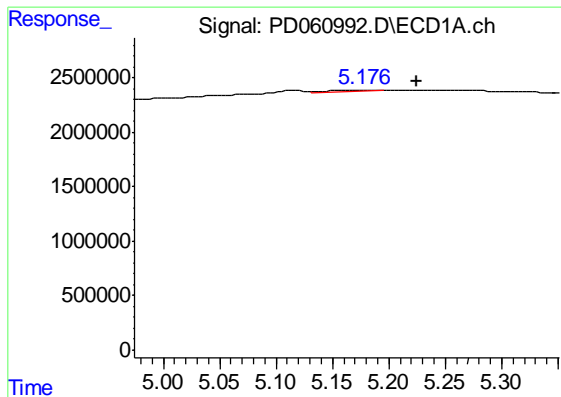
#6 beta-BHC

R.T.: 0.000 min  
 Exp R.T. : 4.473 min  
 Response: 0  
 Conc: N.D.



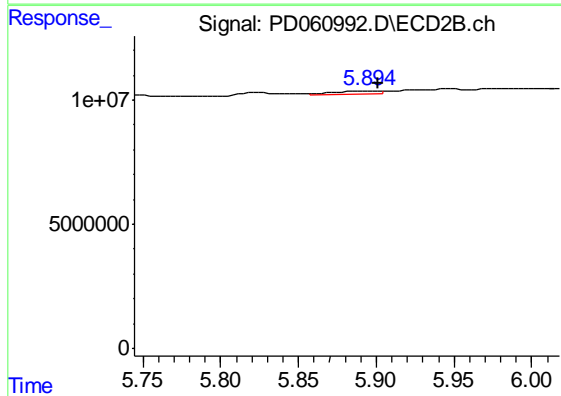
#6 beta-BHC

R.T.: 4.911 min  
 Delta R.T.: 0.046 min  
 Response: 1595702  
 Conc: 0.40 ng/ml

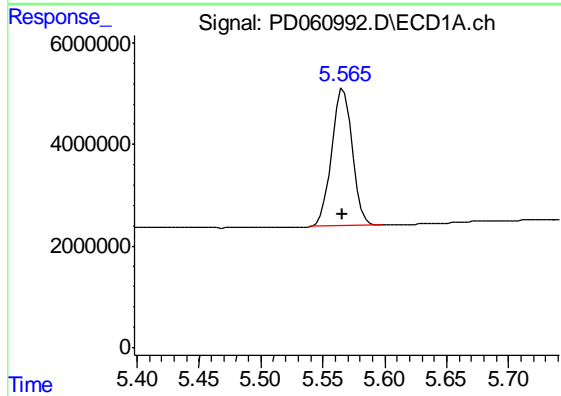


#8 Heptachlor epoxide  
 R.T.: 5.177 min  
 Delta R.T.: -0.047 min  
 Response: 605417  
 Conc: 0.34 ng/ml

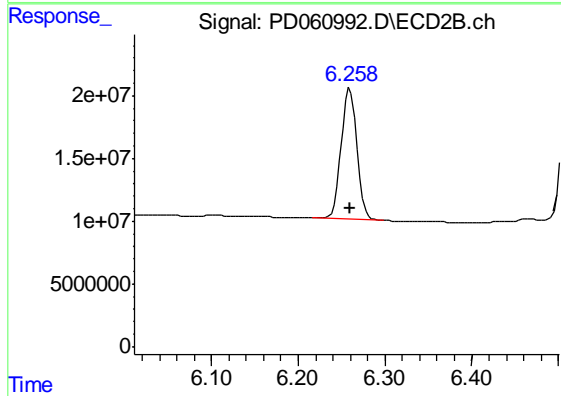
Instrument :  
 ECD\_D  
 ClientSampleId :  
 INDA3004



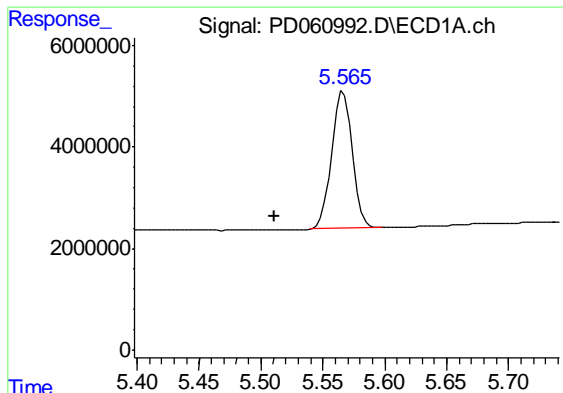
#8 Heptachlor epoxide  
 R.T.: 5.895 min  
 Delta R.T.: -0.007 min  
 Response: 2315671  
 Conc: 0.28 ng/ml



#9 Endosulfan I  
 R.T.: 5.567 min  
 Delta R.T.: 0.001 min  
 Response: 31511768  
 Conc: 17.99 ng/ml

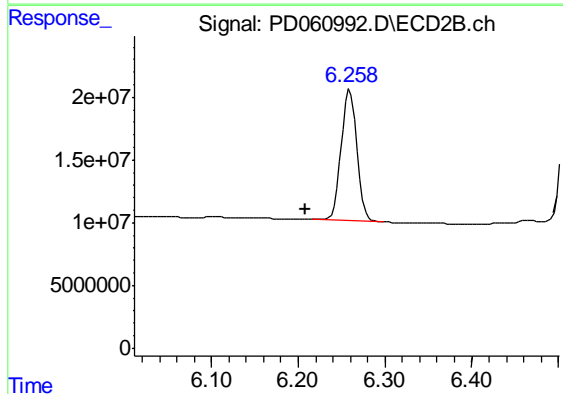


#9 Endosulfan I  
 R.T.: 6.260 min  
 Delta R.T.: 0.000 min  
 Response: 132057672  
 Conc: 16.95 ng/ml

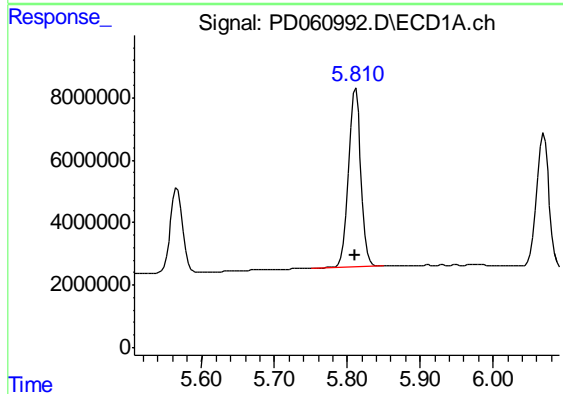


#11 cis-Chlordane  
 R.T.: 5.567 min  
 Delta R.T.: 0.055 min  
 Response: 31511768  
 Conc: 17.05 ng/ml

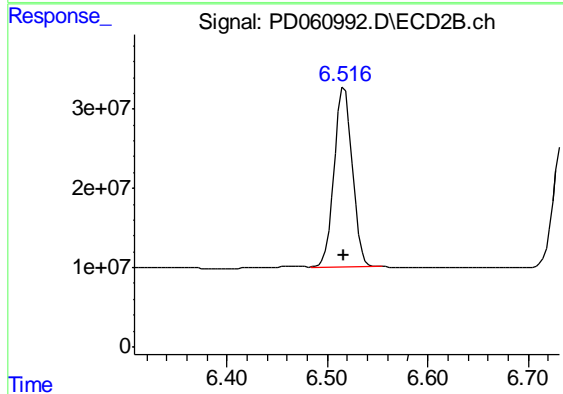
Instrument :  
 ECD\_D  
 ClientSampleId :  
 INDA3004



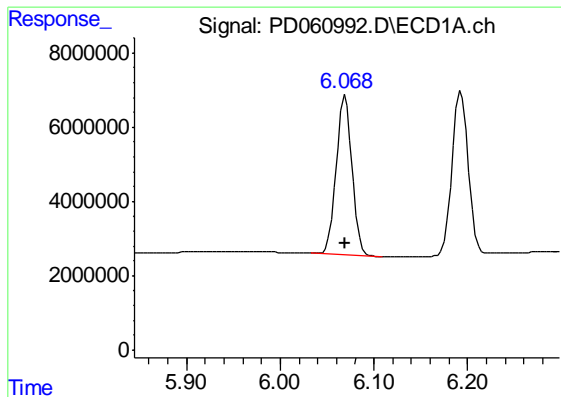
#11 cis-Chlordane  
 R.T.: 6.260 min  
 Delta R.T.: 0.051 min  
 Response: 132057672  
 Conc: 16.06 ng/ml



#13 Dieldrin  
 R.T.: 5.811 min  
 Delta R.T.: 0.001 min  
 Response: 67470502  
 Conc: 34.98 ng/ml

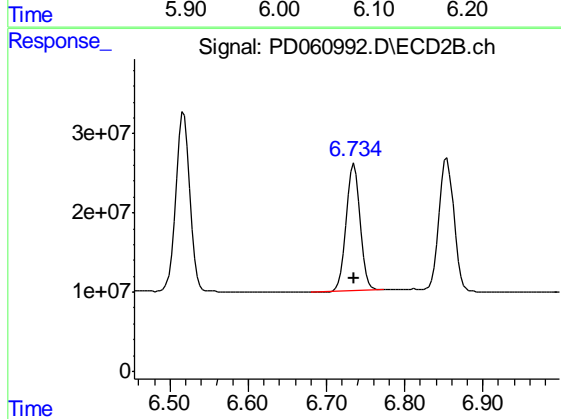


#13 Dieldrin  
 R.T.: 6.517 min  
 Delta R.T.: 0.000 min  
 Response: 283274498  
 Conc: 33.76 ng/ml

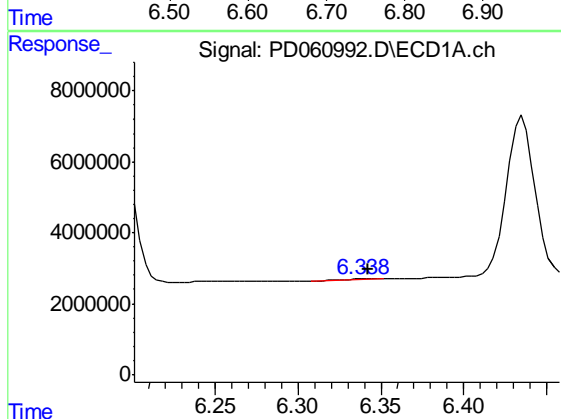


#14 Endrin  
 R.T.: 6.069 min  
 Delta R.T.: 0.001 min  
 Response: 50490961  
 Conc: 31.94 ng/ml

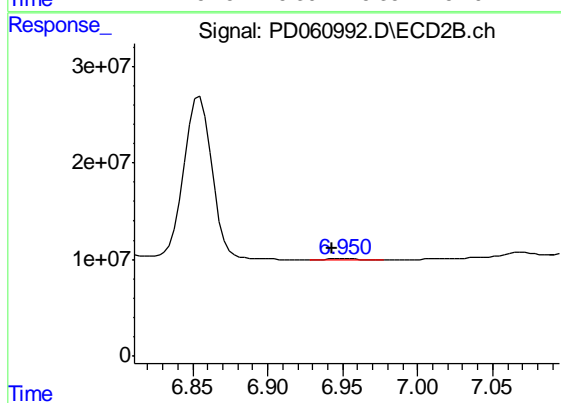
Instrument :  
 ECD\_D  
 ClientSampled :  
 INDA3004



#14 Endrin  
 R.T.: 6.736 min  
 Delta R.T.: 0.000 min  
 Response: 199274585  
 Conc: 30.69 ng/ml

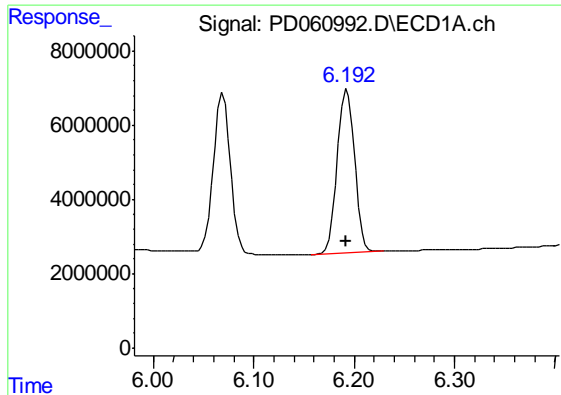


#15 Endosulfan II  
 R.T.: 6.341 min  
 Delta R.T.: -0.001 min  
 Response: 171313  
 Conc: 0.12 ng/ml



#15 Endosulfan II  
 R.T.: 6.951 min  
 Delta R.T.: 0.008 min  
 Response: 1446752  
 Conc: 0.23 ng/ml

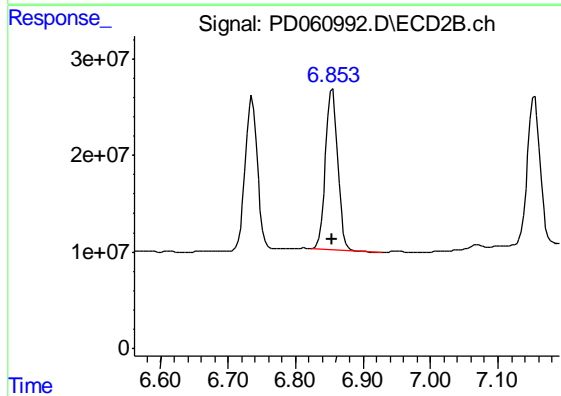




#16 4,4'-DDD

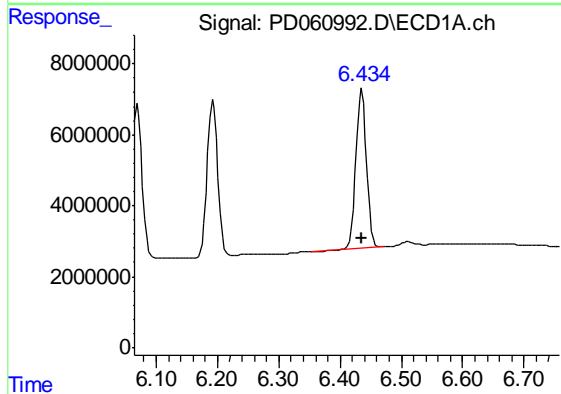
R.T.: 6.193 min  
 Delta R.T.: 0.000 min  
 Response: 52778044  
 Conc: 37.73 ng/ml

Instrument :  
 ECD\_D  
 ClientSampleId :  
 INDA3004



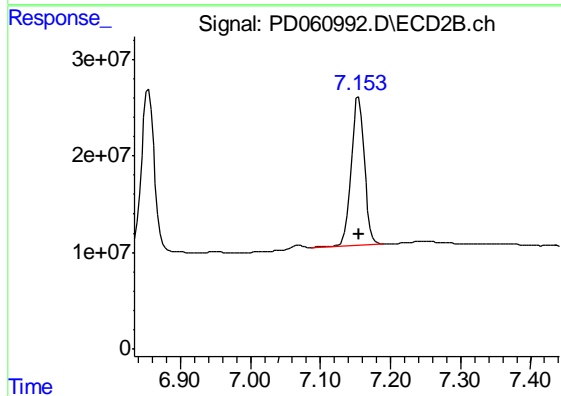
#16 4,4'-DDD

R.T.: 6.855 min  
 Delta R.T.: 0.000 min  
 Response: 210621682  
 Conc: 36.11 ng/ml



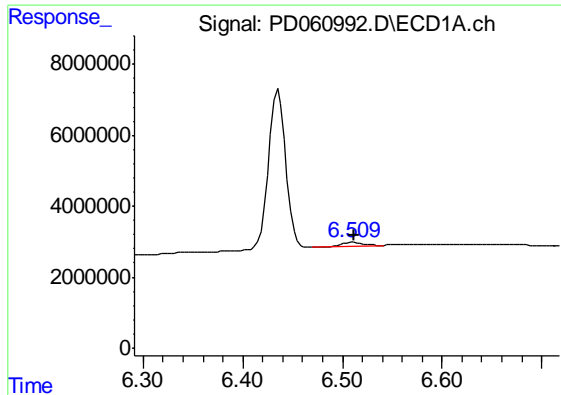
#17 4,4'-DDT

R.T.: 6.436 min  
 Delta R.T.: 0.000 min  
 Response: 53456575  
 Conc: 34.32 ng/ml



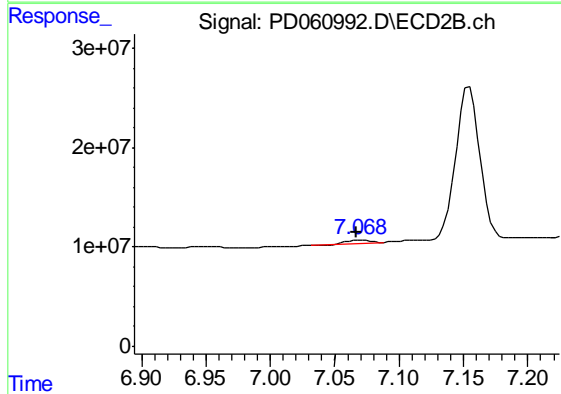
#17 4,4'-DDT

R.T.: 7.154 min  
 Delta R.T.: 0.000 min  
 Response: 201481445  
 Conc: 32.63 ng/ml

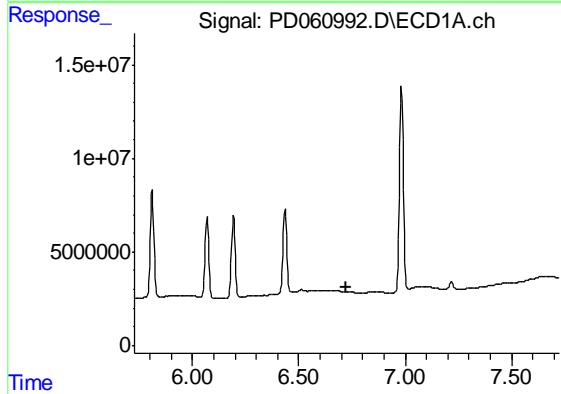


#18 Endrin aldehyde  
 R.T.: 6.511 min  
 Delta R.T.: 0.000 min  
 Response: 1364687  
 Conc: 1.10 ng/ml

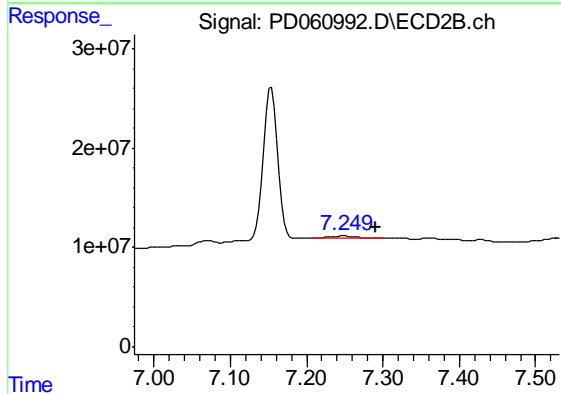
Instrument :  
 ECD\_D  
 ClientSampleId :  
 INDA3004



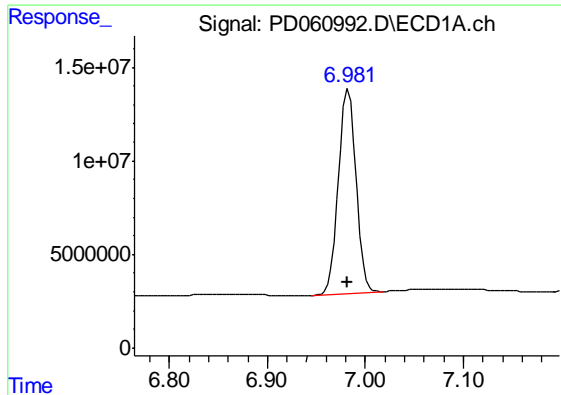
#18 Endrin aldehyde  
 R.T.: 7.069 min  
 Delta R.T.: 0.002 min  
 Response: 3676680  
 Conc: 0.70 ng/ml



#19 Endosulfan Sulfate  
 R.T.: 0.000 min  
 Exp R.T. : 6.726 min  
 Response: 0  
 Conc: N.D.



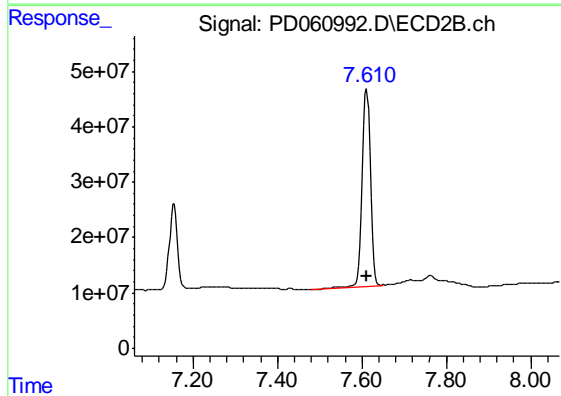
#19 Endosulfan Sulfate  
 R.T.: 7.250 min  
 Delta R.T.: -0.041 min  
 Response: 6350337  
 Conc: 1.03 ng/ml



#20 Methoxychlor

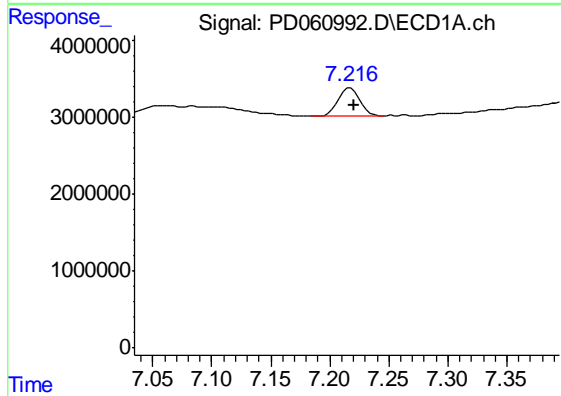
R.T.: 6.983 min  
 Delta R.T.: 0.000 min  
 Response: 135444064  
 Conc: 177.21 ng/ml

Instrument :  
 ECD\_D  
 ClientSampleId :  
 INDA3004



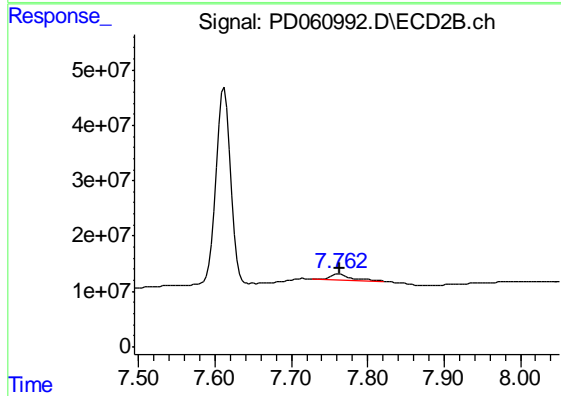
#20 Methoxychlor

R.T.: 7.612 min  
 Delta R.T.: 0.000 min  
 Response: 478172109  
 Conc: 167.91 ng/ml



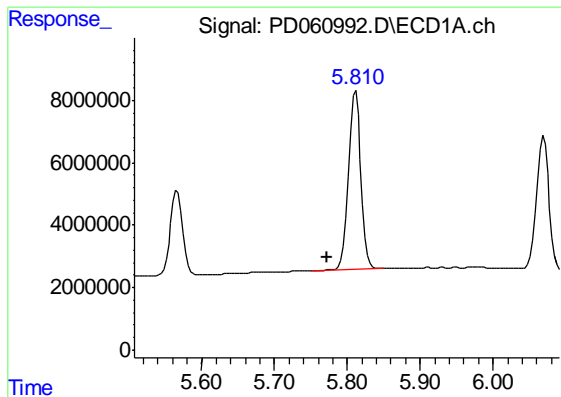
#21 Endrin ketone

R.T.: 7.218 min  
 Delta R.T.: -0.003 min  
 Response: 4835275  
 Conc: 2.91 ng/ml



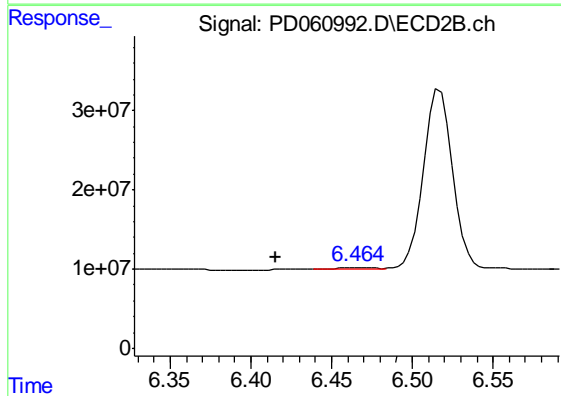
#21 Endrin ketone

R.T.: 7.763 min  
 Delta R.T.: 0.000 min  
 Response: 20028914  
 Conc: 3.09 ng/ml

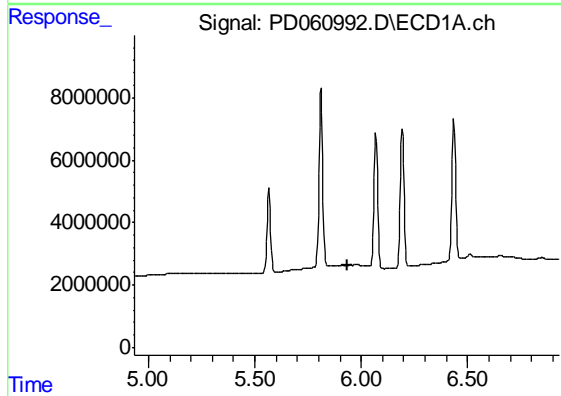


#22 Toxaphene-1  
 R.T.: 5.811 min  
 Delta R.T.: 0.040 min  
 Response: 67470502  
 Conc: 4261.33 ng/ml

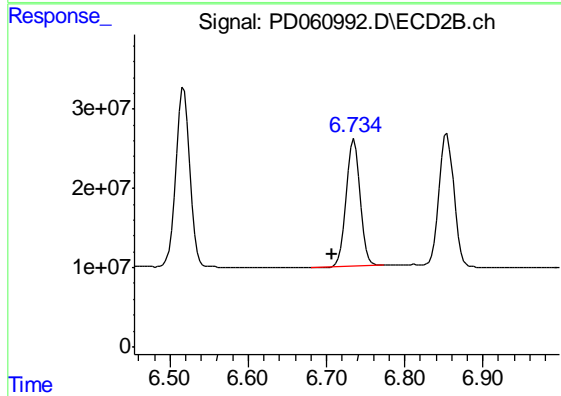
Instrument :  
 ECD\_D  
 ClientSampleId :  
 INDA3004



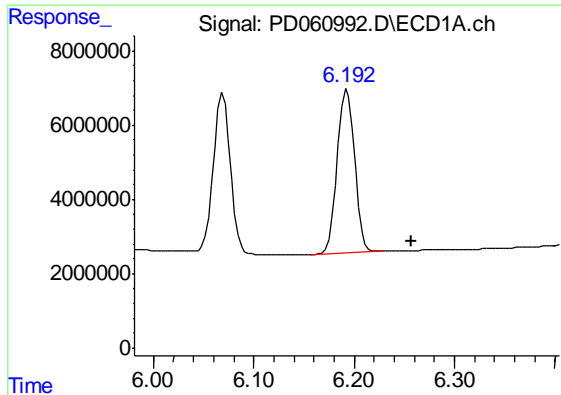
#22 Toxaphene-1  
 R.T.: 6.466 min  
 Delta R.T.: 0.050 min  
 Response: 2036585  
 Conc: 38.68 ng/ml



#23 Toxaphene-2  
 R.T.: 0.000 min  
 Exp R.T. : 5.934 min  
 Response: 0  
 Conc: N.D.

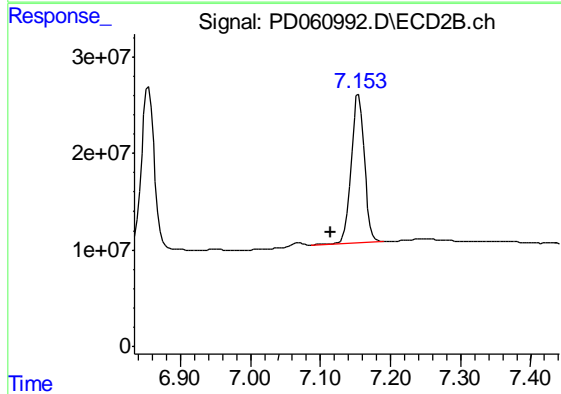


#23 Toxaphene-2  
 R.T.: 6.736 min  
 Delta R.T.: 0.029 min  
 Response: 199274585  
 Conc: 3238.28 ng/ml

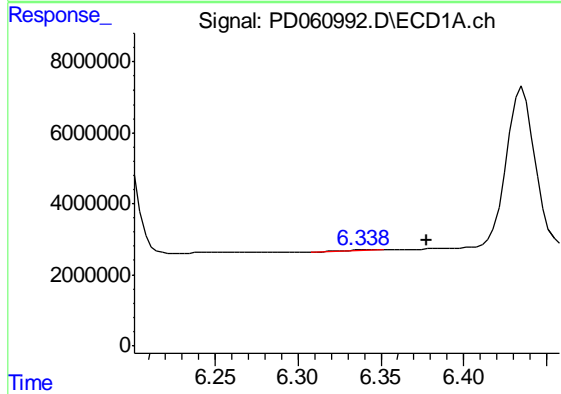


#24 Toxaphene-3  
 R.T.: 6.193 min  
 Delta R.T.: -0.063 min  
 Response: 52778044  
 Conc: 2862.26 ng/ml

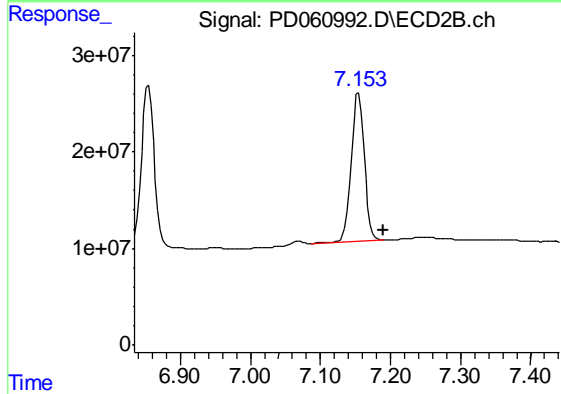
Instrument :  
 ECD\_D  
 ClientSampleId :  
 INDA3004



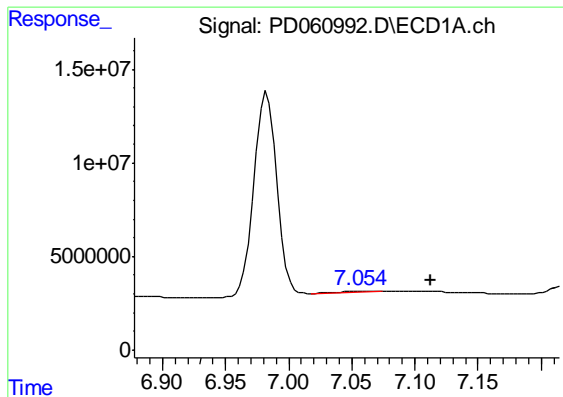
#24 Toxaphene-3  
 R.T.: 7.154 min  
 Delta R.T.: 0.040 min  
 Response: 201481445  
 Conc: 2304.62 ng/ml



#25 Toxaphene-4  
 R.T.: 6.341 min  
 Delta R.T.: -0.036 min  
 Response: 171313  
 Conc: 4.13 ng/ml

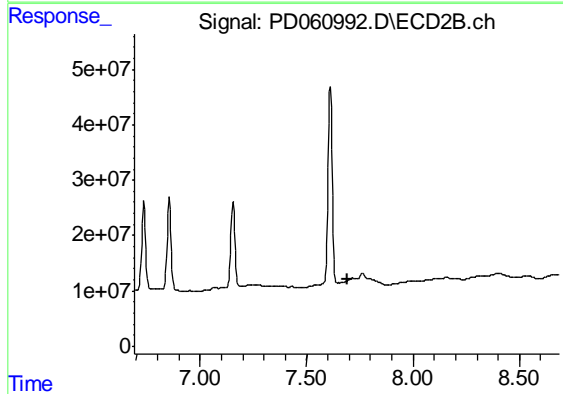


#25 Toxaphene-4  
 R.T.: 7.154 min  
 Delta R.T.: -0.036 min  
 Response: 201481445  
 Conc: 841.23 ng/ml

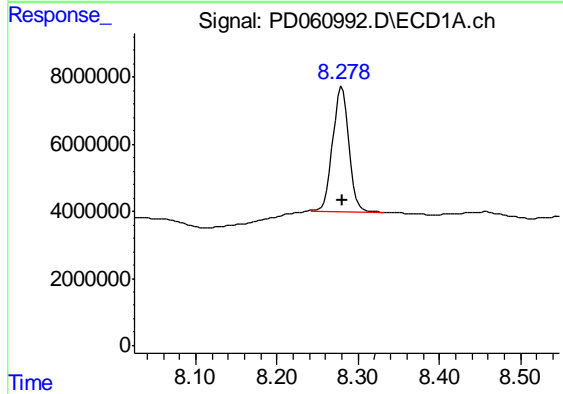


#26 Toxaphene-5  
 R.T.: 7.058 min  
 Delta R.T.: -0.055 min  
 Response: 668846  
 Conc: 14.94 ng/ml

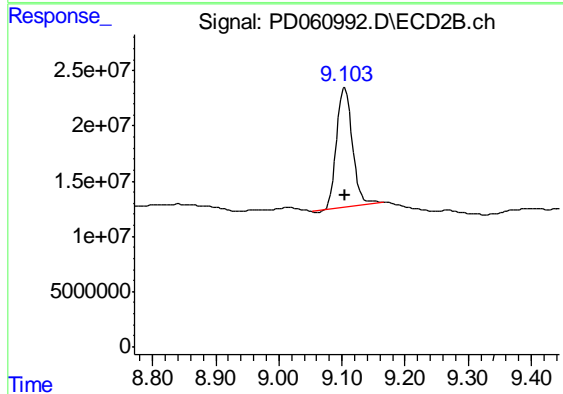
Instrument :  
 ECD\_D  
 ClientSampleId :  
 INDA3004



#26 Toxaphene-5  
 R.T.: 0.000 min  
 Exp R.T. : 7.691 min  
 Response: 0  
 Conc: N.D.



#27 Decachlorobiphenyl  
 R.T.: 8.280 min  
 Delta R.T.: 0.000 min  
 Response: 51561245  
 Conc: 32.04 ng/ml



#27 Decachlorobiphenyl  
 R.T.: 9.105 min  
 Delta R.T.: 0.000 min  
 Response: 189237319  
 Conc: 30.68 ng/ml