

Data Path : Z:\pestpcbsrv\HPCHEM1\ECD_D\Data\PD011223\
 Data File : PD073601.D
 Signal(s) : Signal #1: ECD1A.ch Signal #2: ECD2B.ch
 Acq On : 12 Jan 2023 22:39
 Operator : AR\AJ
 Sample : INDA501
 Misc :
 ALS Vial : 17 Sample Multiplier: 1

Instrument :
 ECD_D
 ClientSampleId :

Integration File signal 1: autoint1.e
 Integration File signal 2: autoint2.e
 Quant Time: Jan 13 01:24:05 2023
 Quant Method : Z:\pestpcbsrv\HPCHEM1\ECD_D\Method\PD011223CLP.M
 Quant Title : GC Extractables
 QLast Update : Fri Jan 13 01:19:28 2023
 Response via : Initial Calibration
 Integrator: ChemStation

Volume Inj. : 1 µl
 Signal #1 Phase : ZB-MR1 Signal #2 Phase: ZB-MR2
 Signal #1 Info : 30M x 0.32mm x0.5 Signal #2 Info : 30M x 0.32mm x 0.25µm

Compound	RT#1	RT#2	Resp#1	Resp#2	ng/ml	ng/ml

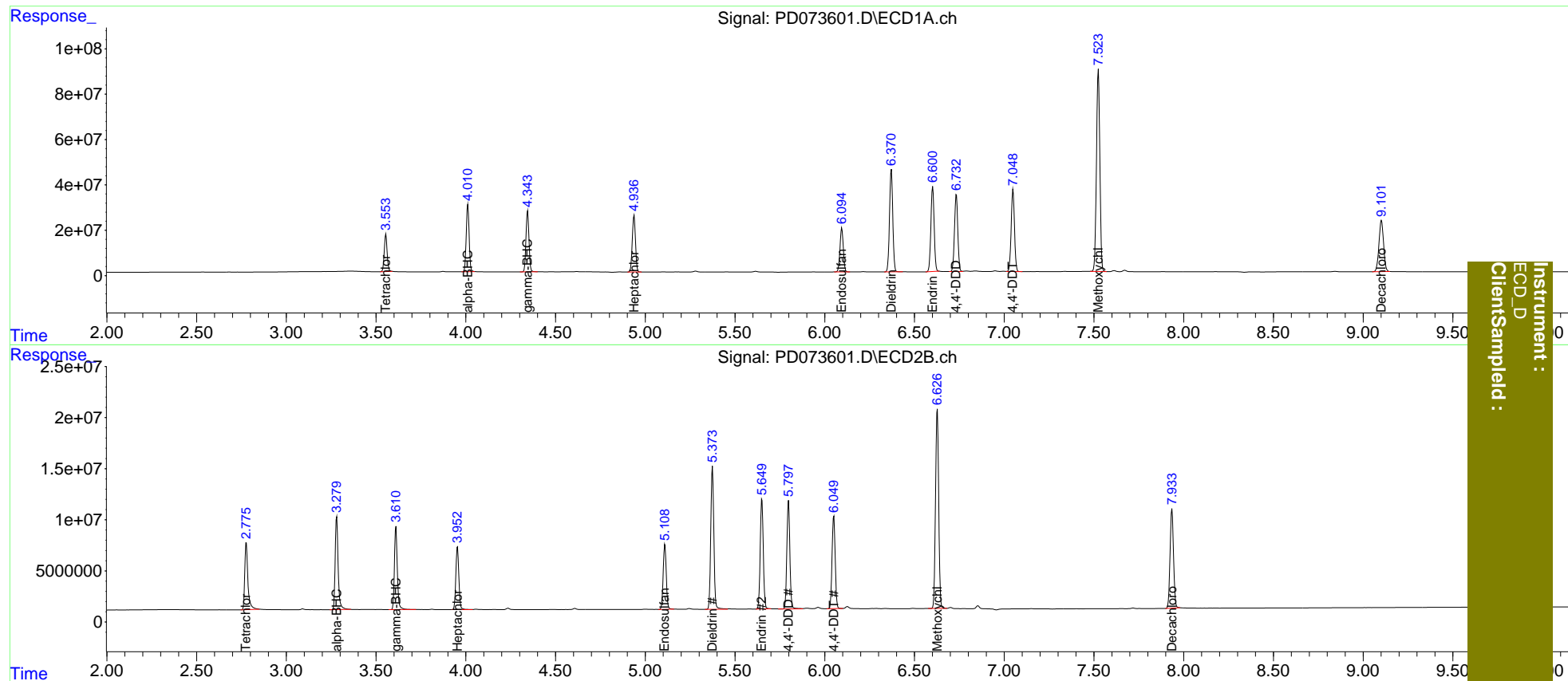
System Monitoring Compounds						
1) SA Tetrachlo...	3.555	2.777	184.6E6	80055391	79.197	78.390
27) SA Decachlor...	9.102	7.935	403.9E6	129.2E6	151.341	152.351
Target Compounds						
2) A alpha-BHC	4.011	3.281	329.2E6	103.8E6	83.568	81.289
3) MA gamma-BHC...	4.345	3.611	307.2E6	90567423	82.323	80.369
4) MA Heptachlor	4.938	3.954	306.5E6	71360250	82.130	79.378
9) A Endosulfan I	6.095	5.109	248.2E6	75920357	80.510	79.082
13) MA Dieldrin	6.371	5.375	571.4E6	165.6E6	165.116	161.404
14) MA Endrin	6.602	5.650	473.4E6	127.6E6	165.273	158.442
16) A 4,4'-DDD	6.733	5.798	434.1E6	124.2E6	164.262	159.389
17) MA 4,4'-DDT	7.049	6.051	462.6E6	110.2E6	164.314	160.371
20) A Methoxychlor	7.525	6.627	1169.2E6	238.4E6	795.166	777.046

(f)=RT Delta > 1/2 Window (#)=Amounts differ by > 25% (m)=manual int.

Data Path : Z:\pestpcbsrv\HPCHEM1\ECD_D\Data\PD011223\
 Data File : PD073601.D
 Signal(s) : Signal #1: ECD1A.ch Signal #2: ECD2B.ch
 Acq On : 12 Jan 2023 22:39
 Operator : AR\AJ
 Sample : INDA501
 Misc :
 ALS Vial : 17 Sample Multiplier: 1

Integration File signal 1: autoint1.e
 Integration File signal 2: autoint2.e
 Quant Time: Jan 13 01:24:05 2023
 Quant Method : Z:\pestpcbsrv\HPCHEM1\ECD_D\Method\PD011223CLP.M
 Quant Title : GC Extractables
 QLast Update : Fri Jan 13 01:19:28 2023
 Response via : Initial Calibration
 Integrator: ChemStation

Volume Inj. : 1 µl
 Signal #1 Phase : ZB-MR1 Signal #2 Phase: ZB-MR2
 Signal #1 Info : 30M x 0.32mm x0.5 Signal #2 Info : 30M x 0.32mm x 0.25µm



Instrument :
 ECD_D
 ClientSampled :