

Data Path : Z:\pestpcbsrv\HPCHEM1\ECD_D\Data\PD011320\
 Data File : PD056930.D
 Signal(s) : Signal #1: ECD1A.ch Signal #2: ECD2B.ch
 Acq On : 13 Jan 2020 09:40
 Operator : AJ\MA
 Sample : PEM08
 Misc :
 ALS Vial : 3 Sample Multiplier: 1

Instrument :
 ECD_D
 ClientSampled :
 PEM08

Manual Integrations
 APPROVED

mohammad
 1/13/2020 1:42:50 PM

Integration File signal 1: autoint1.e
 Integration File signal 2: autoint2.e
 Quant Time: Jan 13 11:27:56 2020
 Quant Method : Z:\pestpcbsrv\HPCHEM1\ECD_D\Method\PD010920CLP.M
 Quant Title : GC Extractables
 QLast Update : Fri Jan 10 06:39:54 2020
 Response via : Initial Calibration
 Integrator: ChemStation

Volume Inj. : 1 µl
 Signal #1 Phase : ZB-MR2 Signal #2 Phase: ZB-MR1
 Signal #1 Info : 30M x 0.32mm x0.2 Signal #2 Info : 30M x 0.32mm x 0.50µm

	Compound	RT#1	RT#2	Resp#1	Resp#2	ng/ml	ng/ml

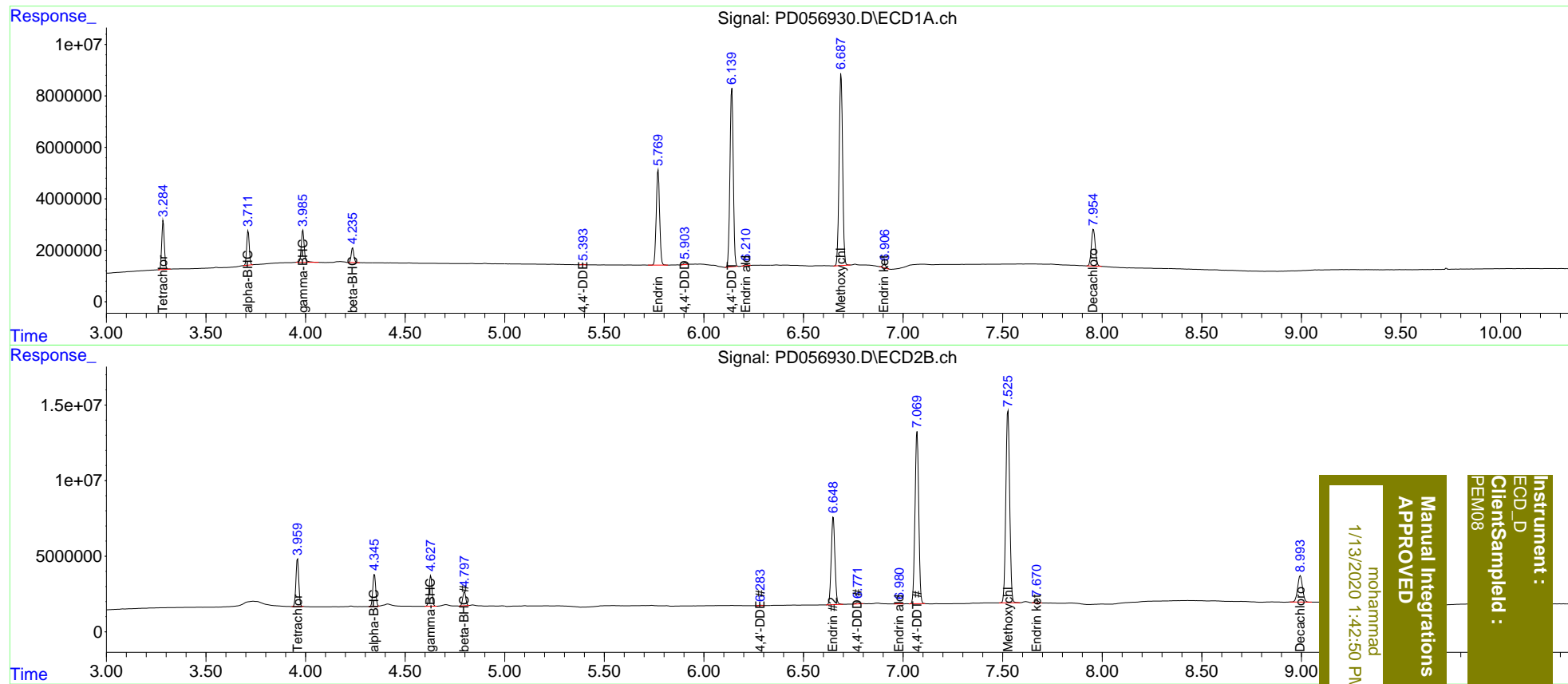
System Monitoring Compounds							
1)	SA Tetrachlo...	3.285	3.960	17082652	31478211	21.092	21.340
27)	SA Decachlor...	7.956	8.995	19714709	29616453	20.818	20.099
Target Compounds							
2)	A alpha-BHC	3.712	4.346	11964846	21351636	10.258	10.279
3)	MA gamma-BHC...	3.987	4.629	12925808	20545773	11.075	10.217
6)	B beta-BHC	4.237	4.798	5366483	9812967	10.632	10.427
12)	B 4,4'-DDE	5.393	6.283	193029	410857	0.197m	0.232m
14)	MA Endrin	5.770	6.649	43561897	74890746	50.463	48.835
16)	A 4,4'-DDD	5.903	6.771	683898	1535193	0.892m	1.078m
17)	MA 4,4'-DDT	6.140	7.070	80047723	147.6E6	111.982	104.193
18)	B Endrin al...	6.210	6.980	604561	729585	0.793m	0.531m#
20)	A Methoxychlor	6.689	7.527	91519289	171.2E6	234.617	219.430
21)	B Endrin ke...	6.906	7.670	1550711	2182440	1.645m	1.317m

(f)=RT Delta > 1/2 Window (#)=Amounts differ by > 25% (m)=manual int.

Data Path : Z:\pestpcbsrv\HPCHEM1\ECD_D\Data\PD011320\
 Data File : PD056930.D
 Signal(s) : Signal #1: ECD1A.ch Signal #2: ECD2B.ch
 Acq On : 13 Jan 2020 09:40
 Operator : AJ\MA
 Sample : PEM08
 Misc :
 ALS Vial : 3 Sample Multiplier: 1

Integration File signal 1: autoint1.e
 Integration File signal 2: autoint2.e
 Quant Time: Jan 13 11:27:56 2020
 Quant Method : Z:\pestpcbsrv\HPCHEM1\ECD_D\Method\PD010920CLP.M
 Quant Title : GC Extractables
 QLast Update : Fri Jan 10 06:39:54 2020
 Response via : Initial Calibration
 Integrator: ChemStation

Volume Inj. : 1 µl
 Signal #1 Phase : ZB-MR2 Signal #2 Phase: ZB-MR1
 Signal #1 Info : 30M x 0.32mm x0.2 Signal #2 Info : 30M x 0.32mm x 0.50µm



Instrument : ECD_D
 ClientSampleId : PEM08
 Manual Integrations APPROVED
 mohammad
 1/13/2020 1:42:50 PM