

Data Path : Z:\pestpcbsrv\HPCHEM1\ECD_D\Data\PD011625\
 Data File : PD087398.D
 Signal(s) : Signal #1: ECD1A.ch Signal #2: ECD2B.ch
 Acq On : 16 Jan 2025 10:45
 Operator : AR\AJ
 Sample : TOXAPH401
 Misc :
 ALS Vial : 7 Sample Multiplier: 1

Instrument :
 ECD_D
 ClientSampleId :
 TOXAPH4045

Integration File signal 1: autoint1.e
 Integration File signal 2: autoint2.e
 Quant Time: Jan 16 11:11:28 2025
 Quant Method : Z:\pestpcbsrv\HPCHEM1\ECD_D\Method\PD011625CLP.M
 Quant Title : GC Extractables
 QLast Update : Thu Jan 16 11:08:17 2025
 Response via : Initial Calibration
 Integrator: ChemStation

Volume Inj. : 1 µl
 Signal #1 Phase : ZB-MR1 Signal #2 Phase: ZB-MR2
 Signal #1 Info : 30M x 0.32mm x0.5 Signal #2 Info : 30M x 0.32mm x 0.25µm

Compound	RT#1	RT#2	Resp#1	Resp#2	ng/ml	ng/ml

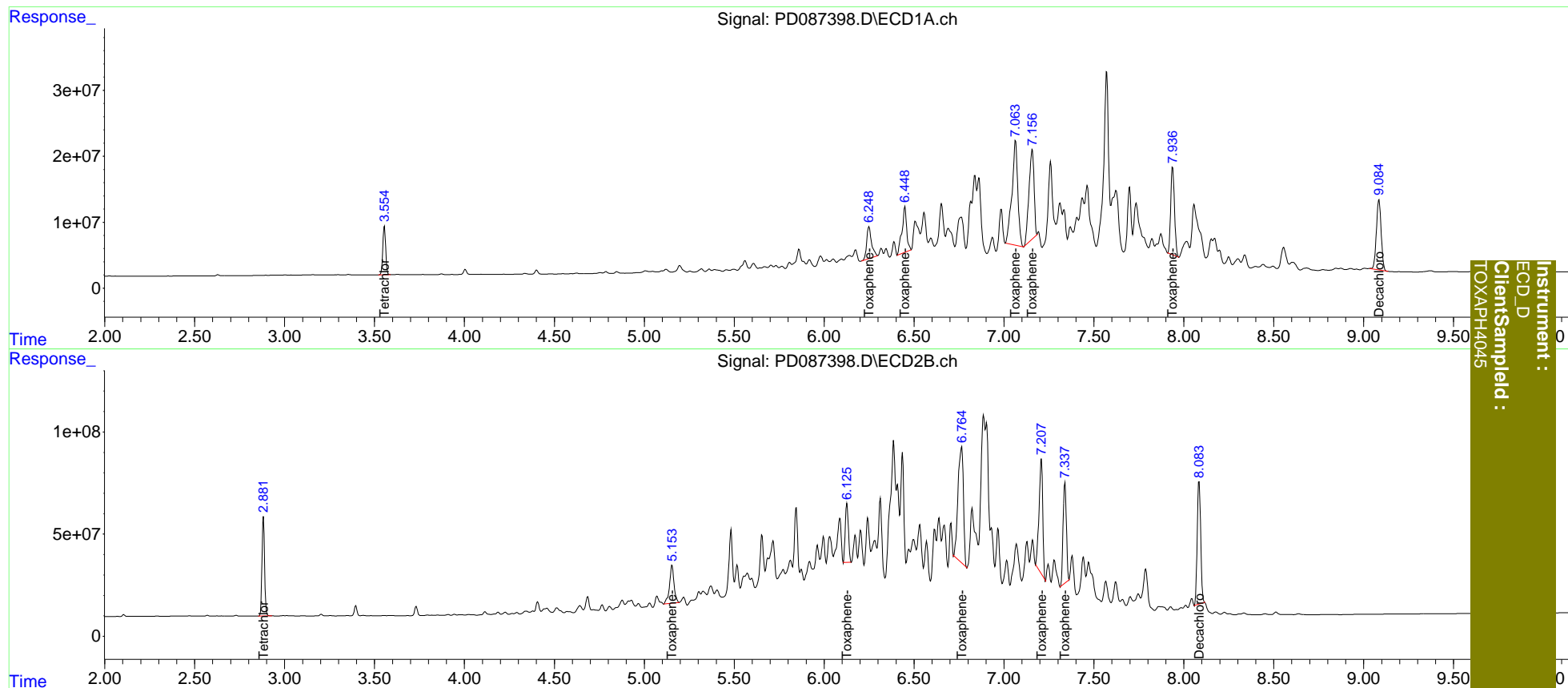
System Monitoring Compounds						
1) SA Tetrachlo...	3.555	2.882	82673499	489.1E6	39.597	38.981
27) SA Decachlor...	9.085	8.085	196.7E6	813.1E6	77.823	77.093
Target Compounds						
22) Toxaphene-1	6.249	5.154	89666940	324.7E6	3977.758	3861.436
23) Toxaphene-2	6.449	6.127	125.9E6	352.1E6	3993.889	3868.598
24) Toxaphene-3	7.064	6.765	361.7E6	1181.1E6	4074.177	3988.078
25) Toxaphene-4	7.157	7.208	266.0E6	805.7E6	4084.556	3919.749
26) Toxaphene-5	7.938	7.339	194.4E6	619.7E6	4033.569	3969.997

(f)=RT Delta > 1/2 Window (#)=Amounts differ by > 25% (m)=manual int.

Data Path : Z:\pestpcbsrv\HPCHEM1\ECD_D\Data\PD011625\
 Data File : PD087398.D
 Signal(s) : Signal #1: ECD1A.ch Signal #2: ECD2B.ch
 Acq On : 16 Jan 2025 10:45
 Operator : AR\AJ
 Sample : TOXAPH401
 Misc :
 ALS Vial : 7 Sample Multiplier: 1

Integration File signal 1: autoint1.e
 Integration File signal 2: autoint2.e
 Quant Time: Jan 16 11:11:28 2025
 Quant Method : Z:\pestpcbsrv\HPCHEM1\ECD_D\Method\PD011625CLP.M
 Quant Title : GC Extractables
 QLast Update : Thu Jan 16 11:08:17 2025
 Response via : Initial Calibration
 Integrator: ChemStation

Volume Inj. : 1 µl
 Signal #1 Phase : ZB-MR1 Signal #2 Phase: ZB-MR2
 Signal #1 Info : 30M x 0.32mm x 0.5 Signal #2 Info : 30M x 0.32mm x 0.25µm



Instrument :
 ECD_D
 ClientSampled :
 TOXAPH4045