

Data Path : Z:\pestpcbsrv\HPCHEM1\ECD\_D\Data\PD011719\  
 Data File : PD051068.D  
 Signal(s) : Signal #1: ECD1A.CH Signal #2: ECD2B.CH  
 Acq On : 17 Jan 2019 19:25  
 Operator : AJ\SJ  
 Sample : K1147-27  
 Misc :  
 ALS Vial : 35 Sample Multiplier: 1

Instrument :  
 ECD\_D  
 ClientSampleId :

Integration File signal 1: autoint1.e  
 Integration File signal 2: autoint2.e  
 Quant Time: Jan 17 21:18:20 2019  
 Quant Method : Z:\pestpcbsrv\HPCHEM1\ECD\_D\Method\PD011019.M  
 Quant Title : GC Extractables  
 QLast Update : Thu Jan 10 03:41:46 2019  
 Response via : Initial Calibration  
 Integrator: ChemStation 6890 Scale Mode: Large solvent peaks clipped

Volume Inj. : 2 µl  
 Signal #1 Phase : ZB-MR1 Signal #2 Phase: ZB-MR1  
 Signal #1 Info : 30M x 0.32mm x0.2 Signal #2 Info : 30M x 0.32mm x 0.50µm

	Compound	RT#1	RT#2	Resp#1	Resp#2	ng/ml	ng/ml
-----							
System Monitoring Compounds							
1)	SA Tetrachlo...	3.225	4.044	29604979	581.0E6	19.821	19.523
28)	SA Decachlor...	7.827	9.155	26299018	399.0E6	21.668	19.996
Target Compounds							
2)	A alpha-BHC	3.661	4.409f	373046	1794217	0.155	0.039 #
3)	MA gamma-BHC...	3.919	0.000	1631511	0	0.692	N.D. #
4)	MA Heptachlor	0.000	5.215f	0	4237553	N.D.	0.104 #
6)	B beta-BHC	4.131f	4.936f	779212	30686842	0.823	1.696 #
8)	B Heptachlo...	0.000	5.922	0	25032782	N.D.	0.718 #
10)	B gamma-Chl...	0.000	6.175	0	14818354	N.D.	0.427 #
11)	B alpha-Chl...	0.000	6.175f	0	14818354	N.D.	0.437 #
12)	B 4,4'-DDE	0.000	6.463f	0	740199	N.D.	0.022 #
15)	B Endosulfa...	0.000	7.022f	0	1152799	N.D.	0.042 #
16)	A 4,4'-DDD	0.000	6.941f	0	3906134	N.D.	0.149 #
18)	B Endrin al...	0.000	7.048f	0	833035	N.D.	0.037 #
19)	B Endosulfa...	6.337	0.000	208684	0	0.107	N.D. #
23)	Chlordane-1	4.079	5.058	192335	776089	2.818	0.522 #
25)	Chlordane-3	0.000	6.175	0	14818354	N.D.	3.415 #
27)	Chlordane-5	0.000	7.048	0	833035	N.D.	0.808 #

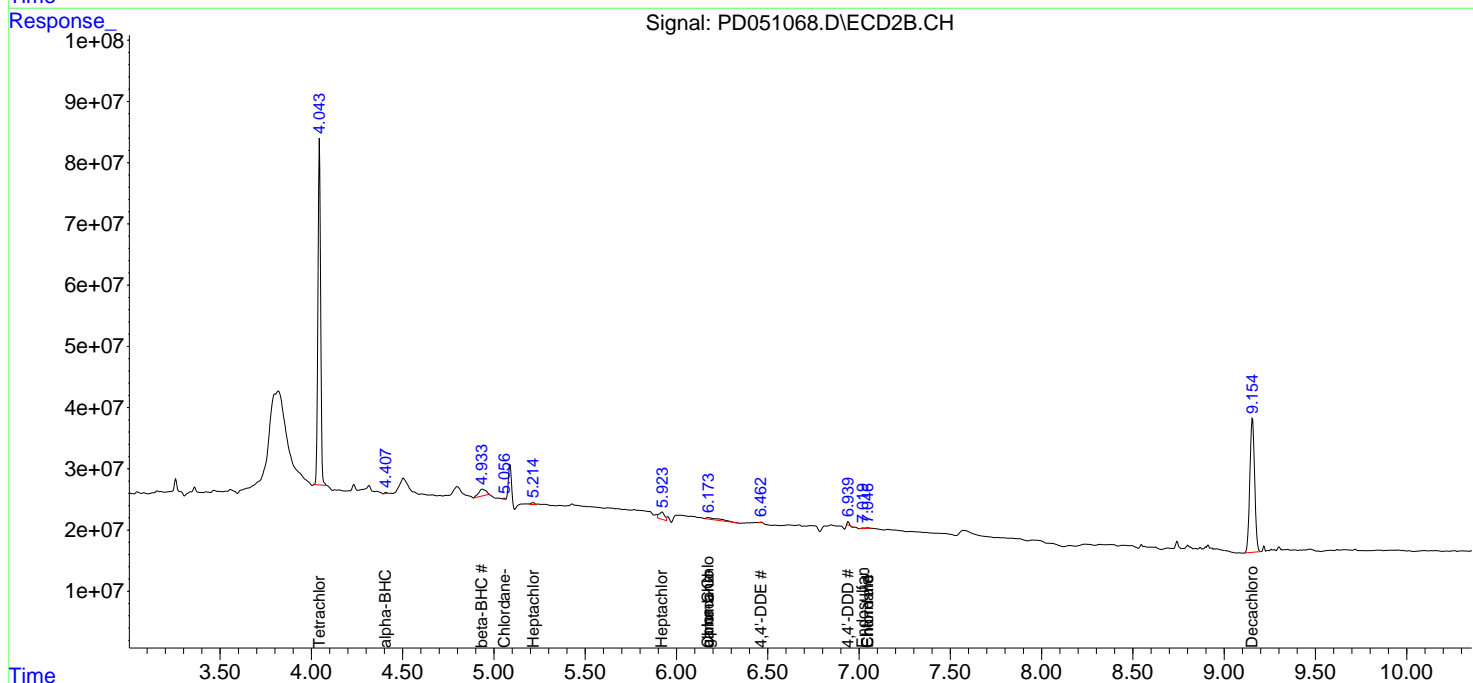
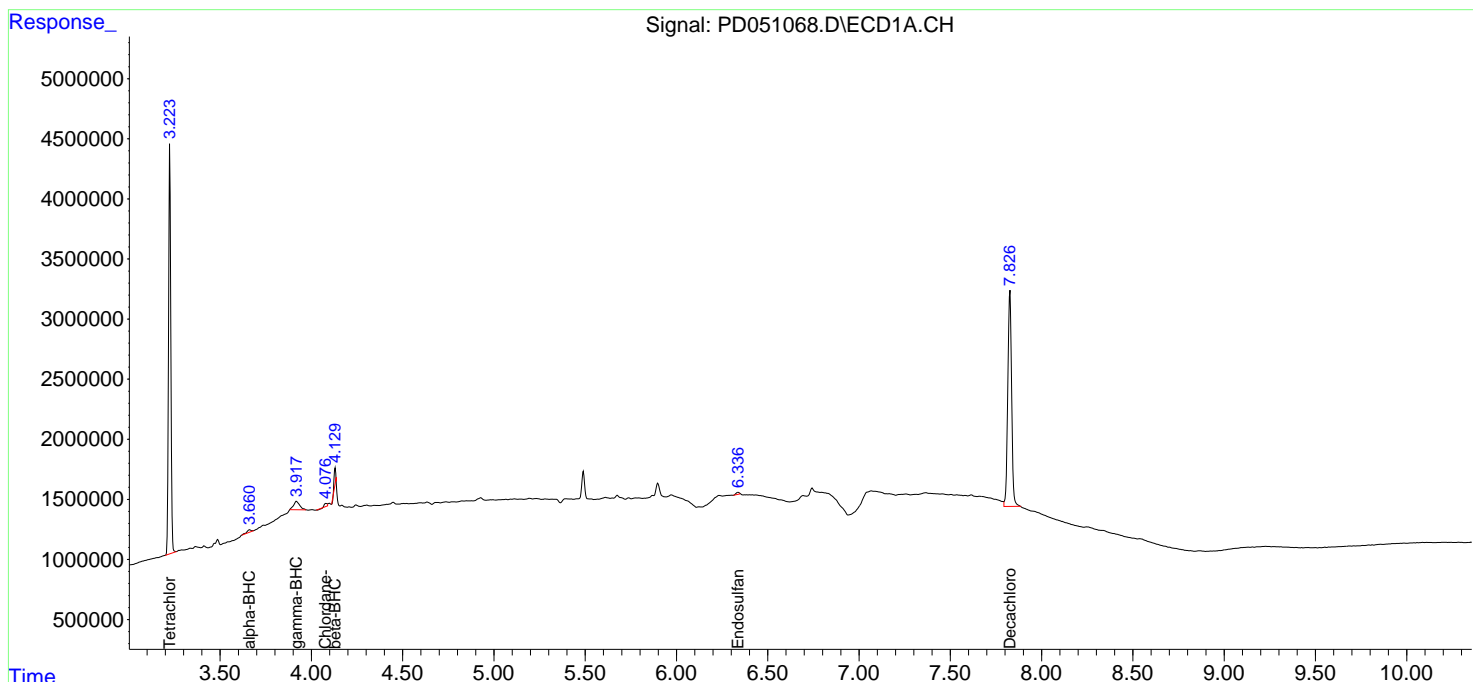
(f)=RT Delta > 1/2 Window (#)=Amounts differ by > 25% (m)=manual int.

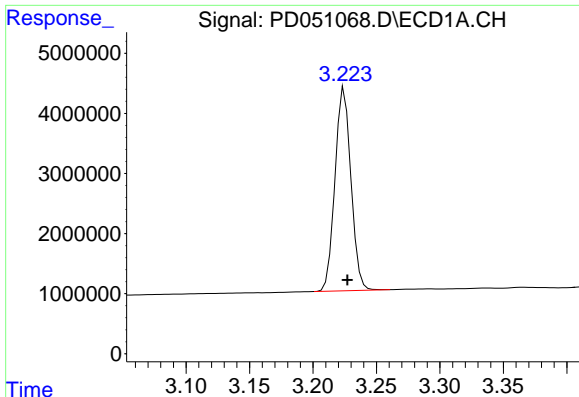
Data Path : Z:\pestpcbsrv\HPCHEM1\ECD\_D\Data\PD011719\  
 Data File : PD051068.D  
 Signal(s) : Signal #1: ECD1A.CH Signal #2: ECD2B.CH  
 Acq On : 17 Jan 2019 19:25  
 Operator : AJ\SJ  
 Sample : K1147-27  
 Misc :  
 ALS Vial : 35 Sample Multiplier: 1

Instrument :  
 ECD\_D  
 ClientSampled :

Integration File signal 1: autoint1.e  
 Integration File signal 2: autoint2.e  
 Quant Time: Jan 17 21:18:20 2019  
 Quant Method : Z:\pestpcbsrv\HPCHEM1\ECD\_D\Method\PD011019.M  
 Quant Title : GC Extractables  
 QLast Update : Thu Jan 10 03:41:46 2019  
 Response via : Initial Calibration  
 Integrator: ChemStation 6890 Scale Mode: Large solvent peaks clipped

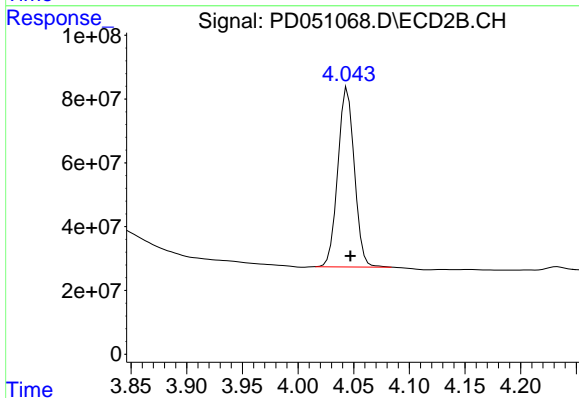
Volume Inj. : 2 µl  
 Signal #1 Phase : ZB-MR2 Signal #2 Phase: ZB-MR1  
 Signal #1 Info : 30M x 0.32mm x0.2 Signal #2 Info : 30M x 0.32mm x 0.50µm



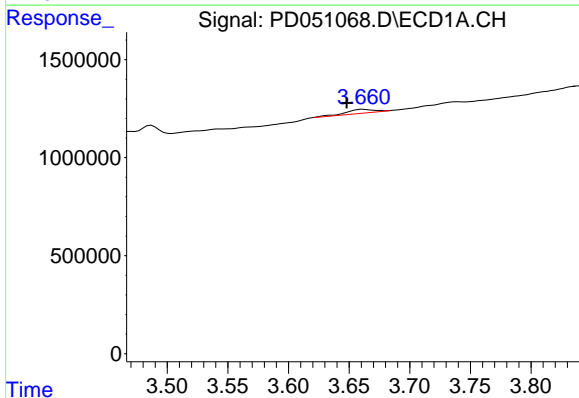


#1 Tetrachloro-m-xylene  
 R.T.: 3.225 min  
 Delta R.T.: -0.002 min  
 Response: 29604979  
 Conc: 19.82 ng/ml

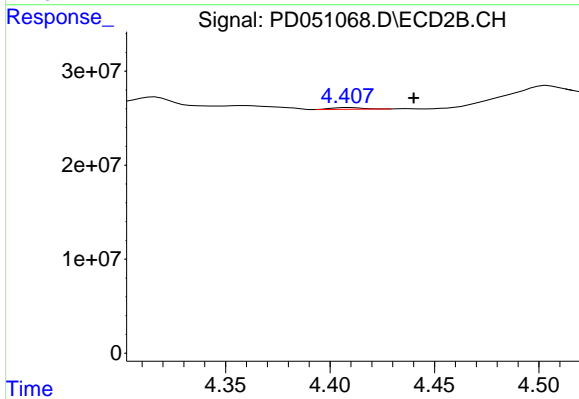
Instrument :  
 ECD\_D  
 ClientSampled :



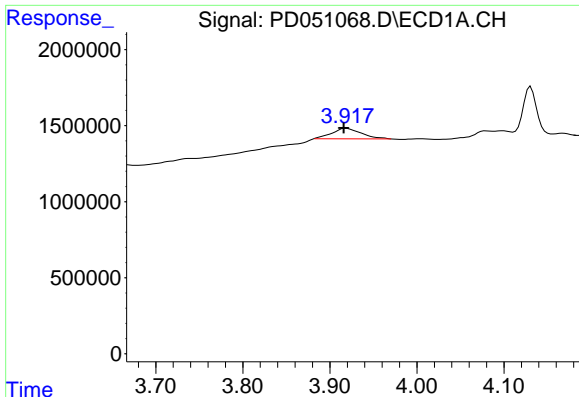
#1 Tetrachloro-m-xylene  
 R.T.: 4.044 min  
 Delta R.T.: -0.003 min  
 Response: 581020609  
 Conc: 19.52 ng/ml



#2 alpha-BHC  
 R.T.: 3.661 min  
 Delta R.T.: 0.013 min  
 Response: 373046  
 Conc: 0.15 ng/ml

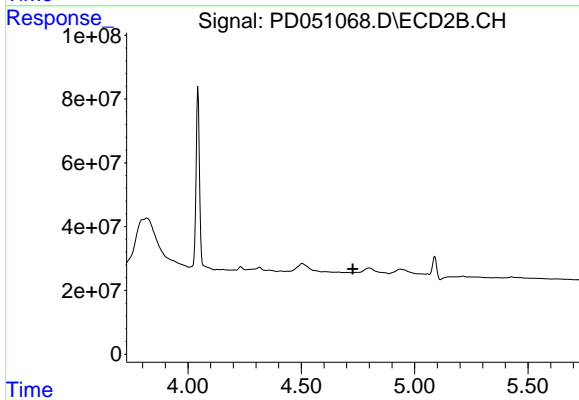


#2 alpha-BHC  
 R.T.: 4.409 min  
 Delta R.T.: -0.031 min  
 Response: 1794217  
 Conc: 0.04 ng/ml

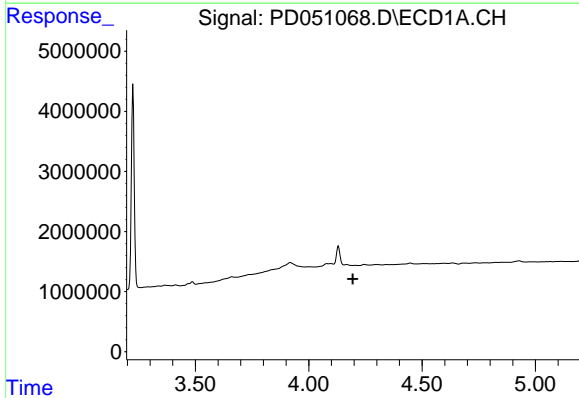


#3 gamma-BHC (Lindane)  
 R.T.: 3.919 min  
 Delta R.T.: 0.003 min  
 Response: 1631511  
 Conc: 0.69 ng/ml

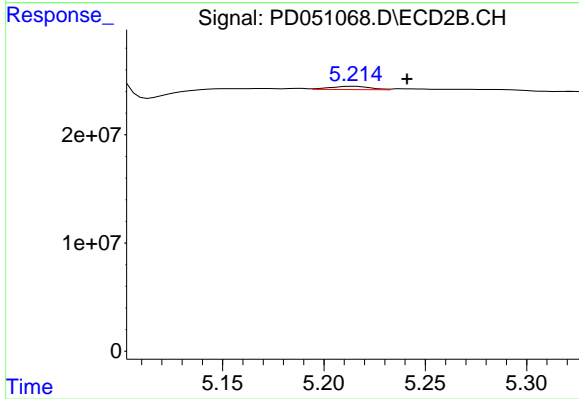
Instrument :  
 ECD\_D  
 ClientSampled :



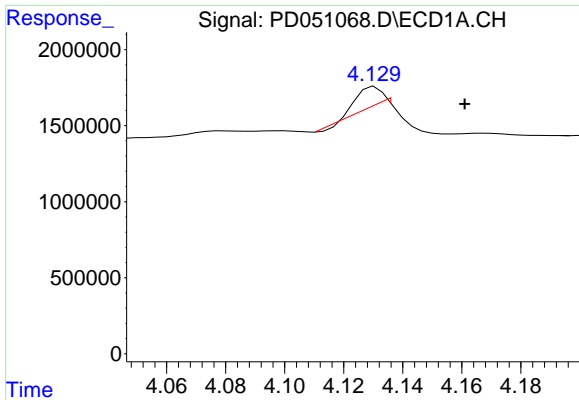
#3 gamma-BHC (Lindane)  
 R.T.: 0.000 min  
 Exp R.T. : 4.727 min  
 Response: 0  
 Conc: N.D.



#4 Heptachlor  
 R.T.: 0.000 min  
 Exp R.T. : 4.194 min  
 Response: 0  
 Conc: N.D.

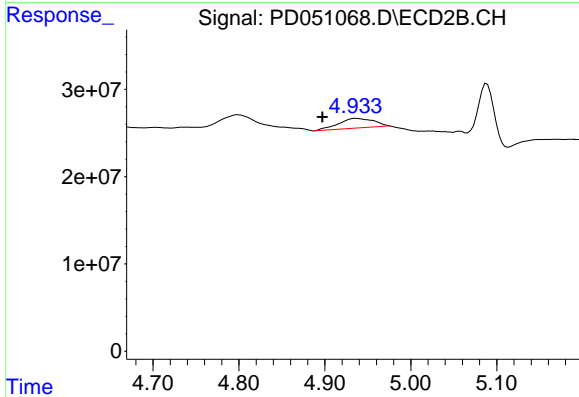


#4 Heptachlor  
 R.T.: 5.215 min  
 Delta R.T.: -0.026 min  
 Response: 4237553  
 Conc: 0.10 ng/ml

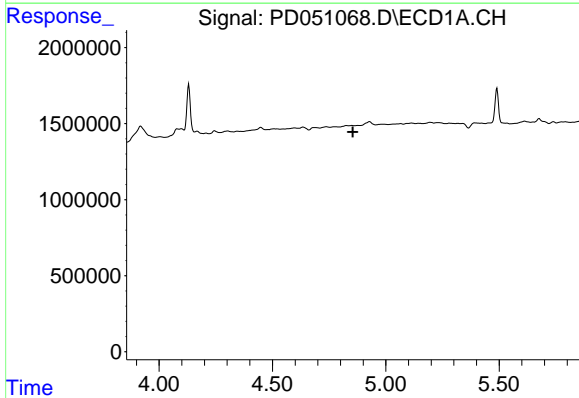


#6 beta-BHC  
 R.T.: 4.131 min  
 Delta R.T.: -0.030 min  
 Response: 779212  
 Conc: 0.82 ng/ml

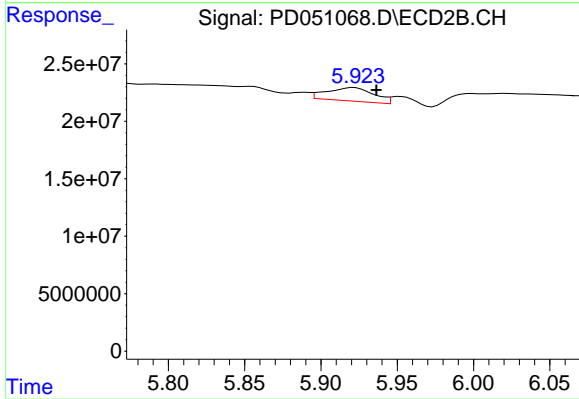
Instrument :  
 ECD\_D  
 ClientSampled :



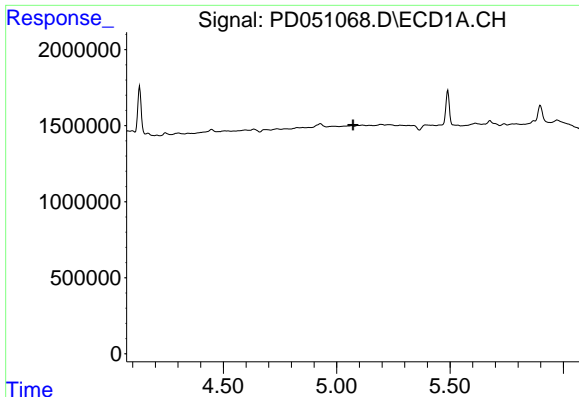
#6 beta-BHC  
 R.T.: 4.936 min  
 Delta R.T.: 0.039 min  
 Response: 30686842  
 Conc: 1.70 ng/ml



#8 Heptachlor epoxide  
 R.T.: 0.000 min  
 Exp R.T. : 4.855 min  
 Response: 0  
 Conc: N.D.



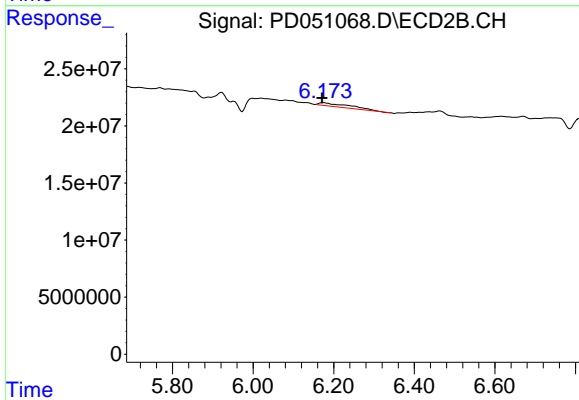
#8 Heptachlor epoxide  
 R.T.: 5.922 min  
 Delta R.T.: -0.015 min  
 Response: 25032782  
 Conc: 0.72 ng/ml



#10 gamma-Chlordane

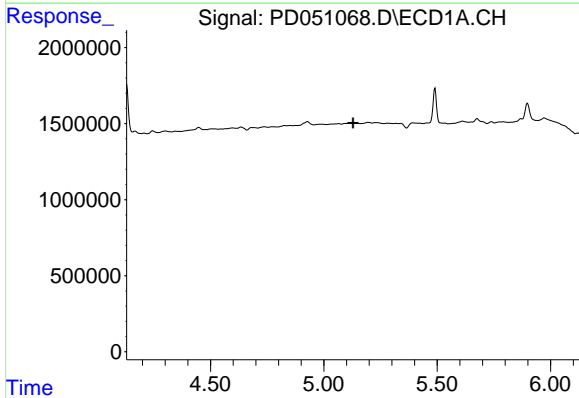
R.T.: 0.000 min  
 Exp R.T. : 5.072 min  
 Response: 0  
 Conc: N.D.

Instrument :  
 ECD\_D  
 ClientSampleId :



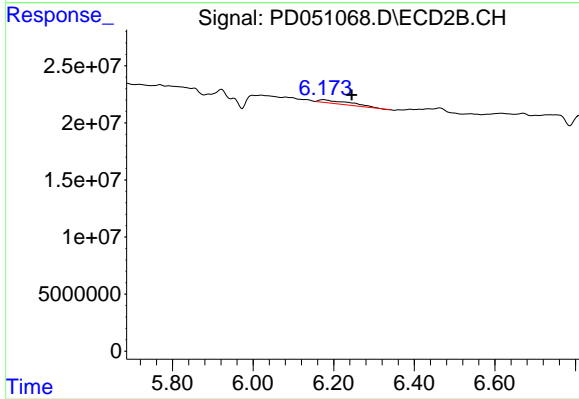
#10 gamma-Chlordane

R.T.: 6.175 min  
 Delta R.T.: 0.003 min  
 Response: 14818354  
 Conc: 0.43 ng/ml



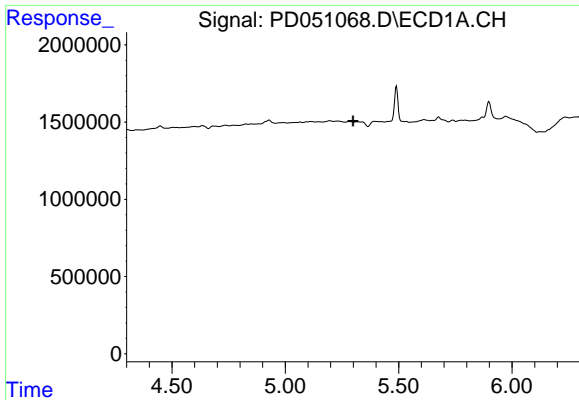
#11 alpha-Chlordane

R.T.: 0.000 min  
 Exp R.T. : 5.129 min  
 Response: 0  
 Conc: N.D.



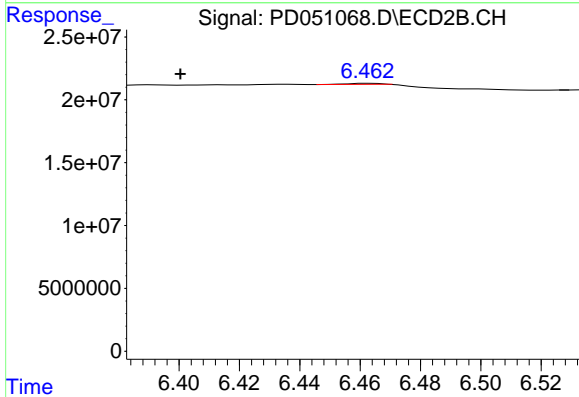
#11 alpha-Chlordane

R.T.: 6.175 min  
 Delta R.T.: -0.070 min  
 Response: 14818354  
 Conc: 0.44 ng/ml

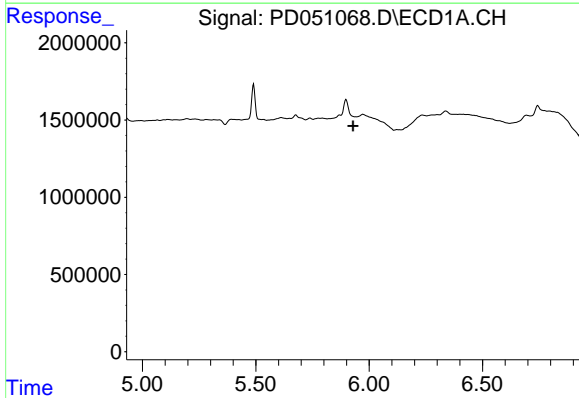


#12 4,4'-DDE  
 R.T.: 0.000 min  
 Exp R.T.: 5.299 min  
 Response: 0  
 Conc: N.D.

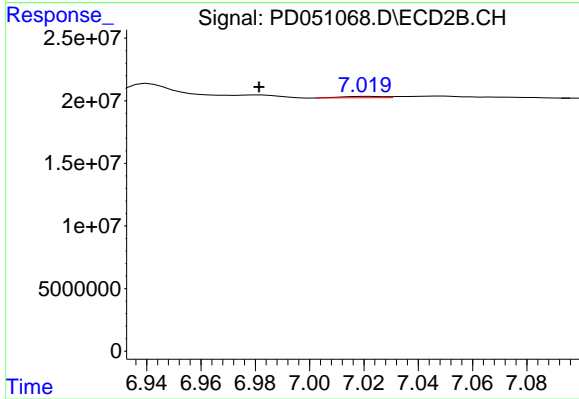
Instrument :  
 ECD\_D  
 ClientSampleId :



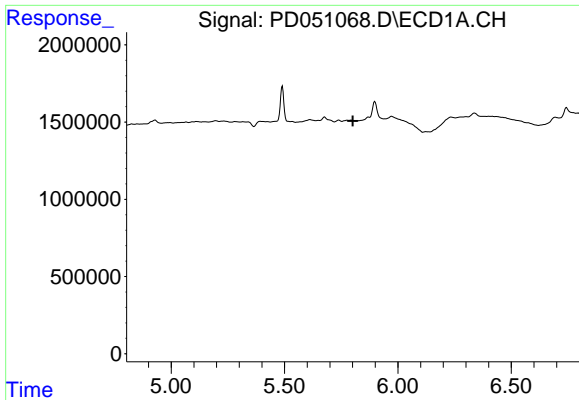
#12 4,4'-DDE  
 R.T.: 6.463 min  
 Delta R.T.: 0.063 min  
 Response: 740199  
 Conc: 0.02 ng/ml



#15 Endosulfan II  
 R.T.: 0.000 min  
 Exp R.T.: 5.930 min  
 Response: 0  
 Conc: N.D.

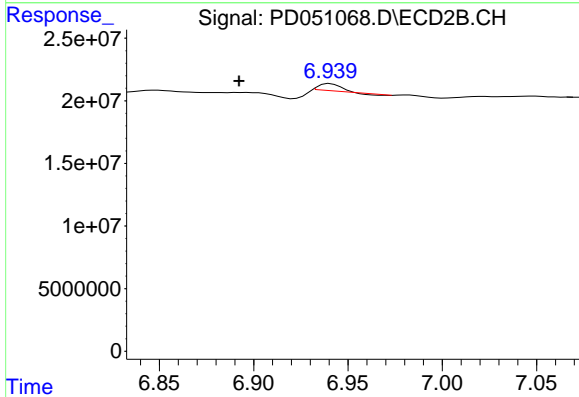


#15 Endosulfan II  
 R.T.: 7.022 min  
 Delta R.T.: 0.040 min  
 Response: 1152799  
 Conc: 0.04 ng/ml

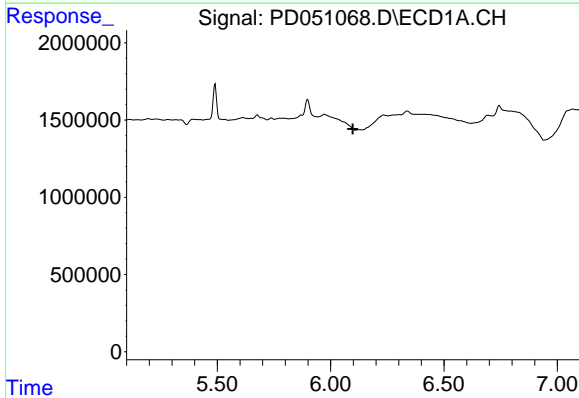


#16 4,4'-DDD  
 R.T.: 0.000 min  
 Exp R.T.: 5.801 min  
 Response: 0  
 Conc: N.D.

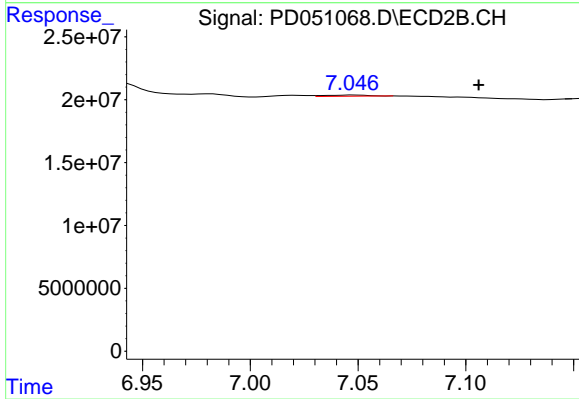
Instrument :  
 ECD\_D  
 ClientSampled :



#16 4,4'-DDD  
 R.T.: 6.941 min  
 Delta R.T.: 0.048 min  
 Response: 3906134  
 Conc: 0.15 ng/ml

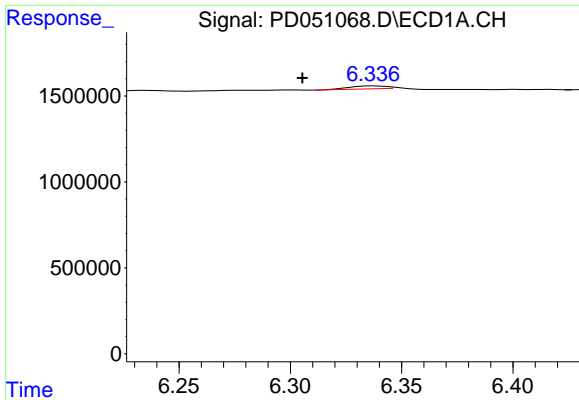


#18 Endrin aldehyde  
 R.T.: 0.000 min  
 Exp R.T.: 6.097 min  
 Response: 0  
 Conc: N.D.



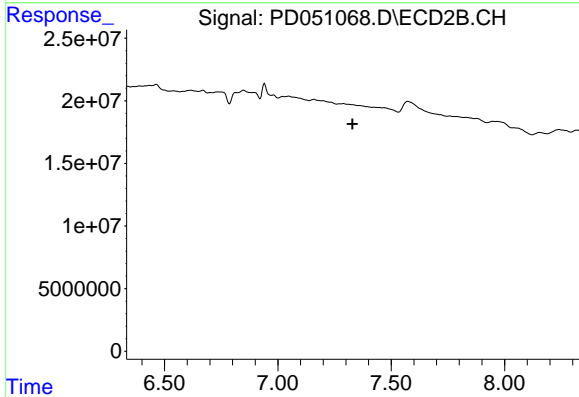
#18 Endrin aldehyde  
 R.T.: 7.048 min  
 Delta R.T.: -0.058 min  
 Response: 833035  
 Conc: 0.04 ng/ml



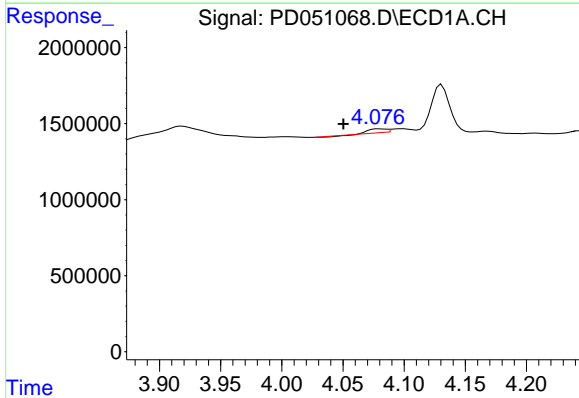


#19 Endosulfan Sulfate  
 R.T.: 6.337 min  
 Delta R.T.: 0.032 min  
 Response: 208684  
 Conc: 0.11 ng/ml

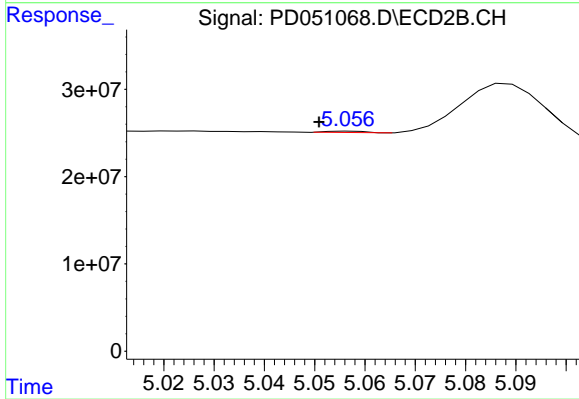
Instrument :  
 ECD\_D  
 ClientSampleId :



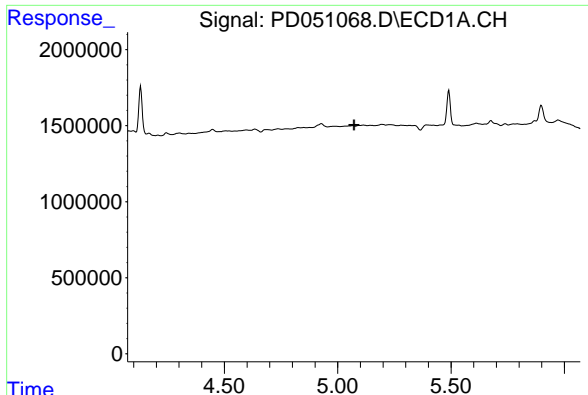
#19 Endosulfan Sulfate  
 R.T.: 0.000 min  
 Exp R.T. : 7.330 min  
 Response: 0  
 Conc: N.D.



#23 Chlordane-1  
 R.T.: 4.079 min  
 Delta R.T.: 0.029 min  
 Response: 192335  
 Conc: 2.82 ng/ml



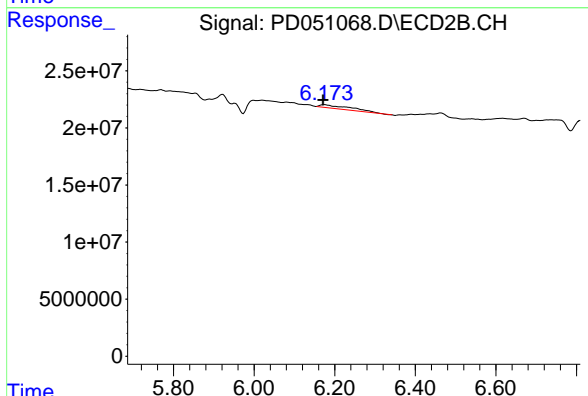
#23 Chlordane-1  
 R.T.: 5.058 min  
 Delta R.T.: 0.007 min  
 Response: 776089  
 Conc: 0.52 ng/ml



#25 Chlordane-3

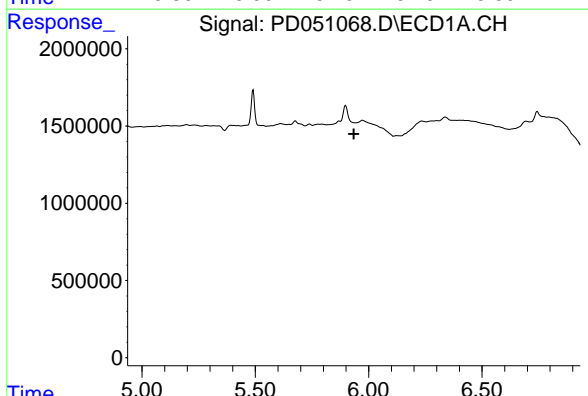
R.T.: 0.000 min  
 Exp R.T. : 5.073 min  
 Response: 0  
 Conc: N.D.

Instrument :  
 ECD\_D  
 ClientSampleId :



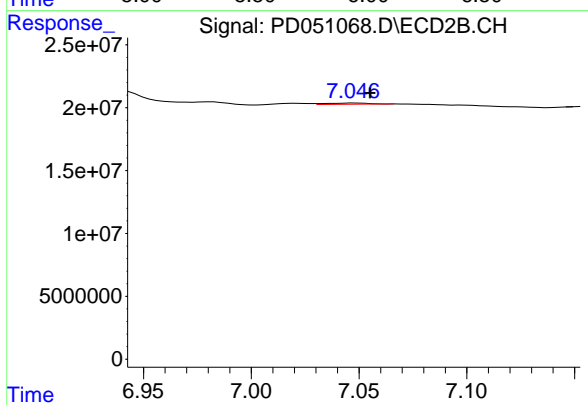
#25 Chlordane-3

R.T.: 6.175 min  
 Delta R.T.: 0.004 min  
 Response: 14818354  
 Conc: 3.41 ng/ml



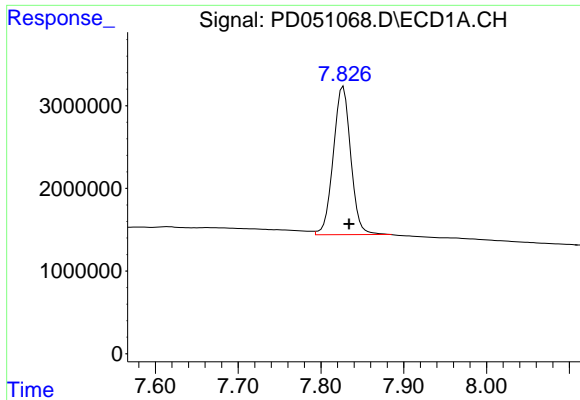
#27 Chlordane-5

R.T.: 0.000 min  
 Exp R.T. : 5.934 min  
 Response: 0  
 Conc: N.D.



#27 Chlordane-5

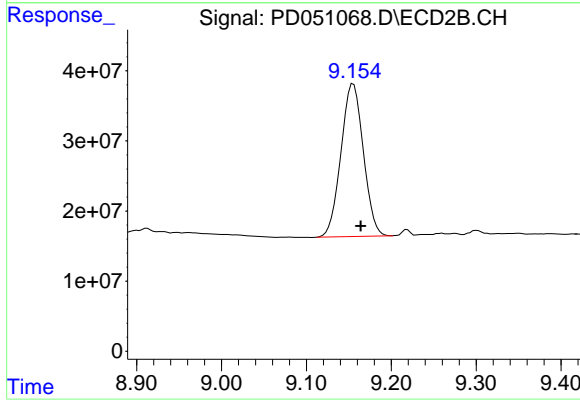
R.T.: 7.048 min  
 Delta R.T.: -0.007 min  
 Response: 833035  
 Conc: 0.81 ng/ml



#28 Decachlorobiphenyl

R.T.: 7.827 min  
Delta R.T.: -0.007 min  
Response: 26299018  
Conc: 21.67 ng/ml

Instrument :  
ECD\_D  
ClientSampled :



#28 Decachlorobiphenyl

R.T.: 9.155 min  
Delta R.T.: -0.009 min  
Response: 399005806  
Conc: 20.00 ng/ml