

Data Path : Z:\pestpcbsrv\HPCHEM1\ECD\_D\Data\PD011719\  
 Data File : PD051069.D  
 Signal(s) : Signal #1: ECD1A.CH Signal #2: ECD2B.CH  
 Acq On : 17 Jan 2019 19:39  
 Operator : AJ\SJ  
 Sample : I.BLK  
 Misc :  
 ALS Vial : 2 Sample Multiplier: 1

Instrument :  
 ECD\_D  
 ClientSampleId :

Integration File signal 1: autoint1.e  
 Integration File signal 2: autoint2.e  
 Quant Time: Jan 17 21:18:28 2019  
 Quant Method : Z:\pestpcbsrv\HPCHEM1\ECD\_D\Method\PD011019.M  
 Quant Title : GC Extractables  
 QLast Update : Thu Jan 10 03:41:46 2019  
 Response via : Initial Calibration  
 Integrator: ChemStation 6890 Scale Mode: Large solvent peaks clipped

Volume Inj. : 2 µl  
 Signal #1 Phase : ZB-MR2 Signal #2 Phase: ZB-MR1  
 Signal #1 Info : 30M x 0.32mm x0.2 Signal #2 Info : 30M x 0.32mm x 0.50µm

| Compound                    | RT#1   | RT#2   | Resp#1   | Resp#2   | ng/ml  | ng/ml   |
|-----------------------------|--------|--------|----------|----------|--------|---------|
| -----                       |        |        |          |          |        |         |
| System Monitoring Compounds |        |        |          |          |        |         |
| 1) SA Tetrachlo...          | 3.225  | 4.044  | 29800684 | 592.5E6  | 19.952 | 19.908  |
| 28) SA Decachlor...         | 7.828  | 9.156  | 25506571 | 401.4E6  | 21.015 | 20.117  |
| Target Compounds            |        |        |          |          |        |         |
| 3) MA gamma-BHC...          | 3.922  | 0.000  | 1408663  | 0        | 0.597  | N.D. #  |
| 6) B beta-BHC               | 4.130f | 4.934f | 183612   | 27702575 | 0.194  | 1.531 # |
| 8) B Heptachlo...           | 0.000  | 5.921  | 0        | 4013149  | N.D.   | 0.115 # |
| 12) B 4,4'-DDE              | 0.000  | 6.466f | 0        | 1079738  | N.D.   | 0.033 # |
| 14) MA Endrin               | 5.609f | 0.000  | 348243   | 0        | 0.159  | N.D. #  |
| 15) B Endosulfa...          | 0.000  | 7.051f | 0        | 1288320  | N.D.   | 0.047 # |
| 17) MA 4,4'-DDT             | 0.000  | 7.162  | 0        | 1750625  | N.D.   | 0.073 # |
| 18) B Endrin al...          | 0.000  | 7.051f | 0        | 1288320  | N.D.   | 0.057 # |
| 19) B Endosulfa...          | 6.337  | 0.000  | 288950   | 0        | 0.148  | N.D. #  |
| 23) Chlordane-1             | 4.081  | 0.000  | 193418   | 0        | 2.834  | N.D. #  |
| 24) Chlordane-2             | 0.000  | 5.471  | 0        | 4682774  | N.D.   | 3.490 # |
| 27) Chlordane-5             | 0.000  | 7.051  | 0        | 1288320  | N.D.   | 1.249 # |
| -----                       |        |        |          |          |        |         |

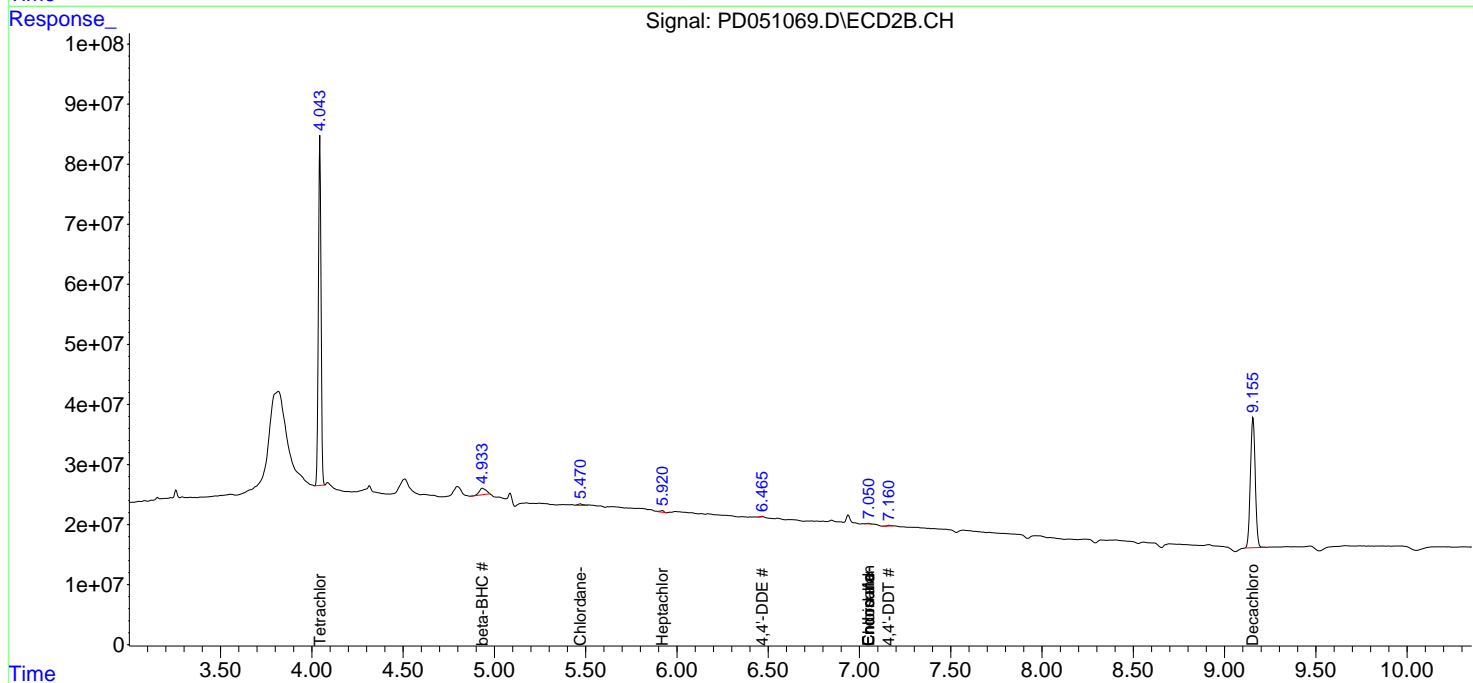
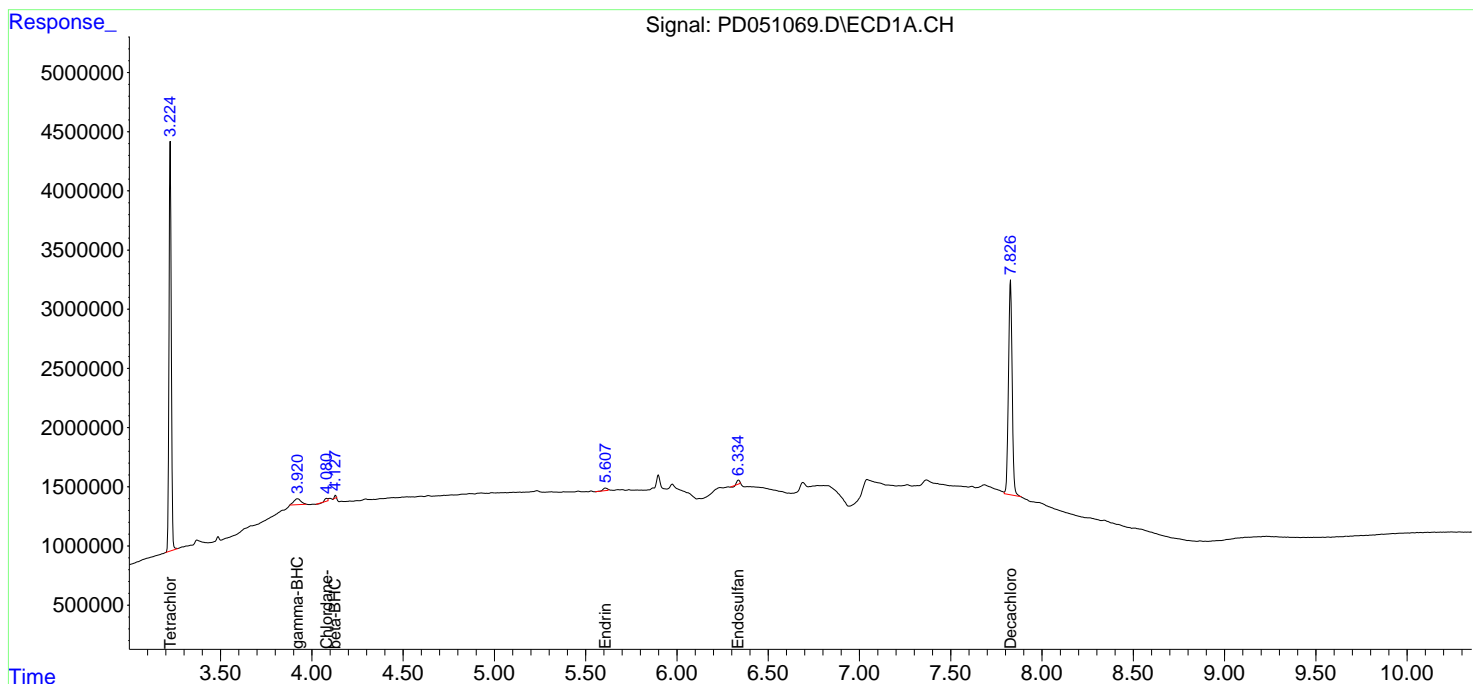
(f)=RT Delta > 1/2 Window (#)=Amounts differ by > 25% (m)=manual int.

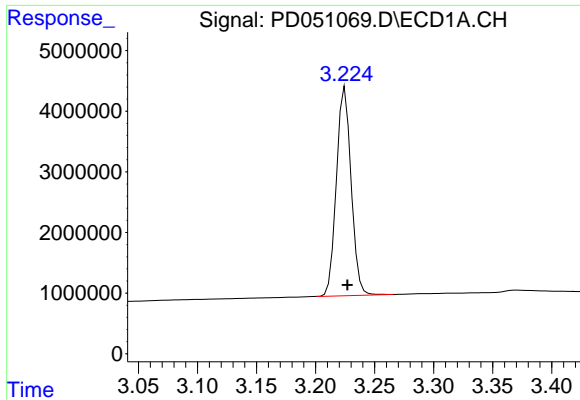
Data Path : Z:\pestpcbsrv\HPCHEM1\ECD\_D\Data\PD011719\  
 Data File : PD051069.D  
 Signal(s) : Signal #1: ECD1A.CH Signal #2: ECD2B.CH  
 Acq On : 17 Jan 2019 19:39  
 Operator : AJ\SJ  
 Sample : I.BLK  
 Misc :  
 ALS Vial : 2 Sample Multiplier: 1

Instrument :  
 ECD\_D  
 ClientSampled :

Integration File signal 1: autoint1.e  
 Integration File signal 2: autoint2.e  
 Quant Time: Jan 17 21:18:28 2019  
 Quant Method : Z:\pestpcbsrv\HPCHEM1\ECD\_D\Method\PD011019.M  
 Quant Title : GC Extractables  
 QLast Update : Thu Jan 10 03:41:46 2019  
 Response via : Initial Calibration  
 Integrator: ChemStation 6890 Scale Mode: Large solvent peaks clipped

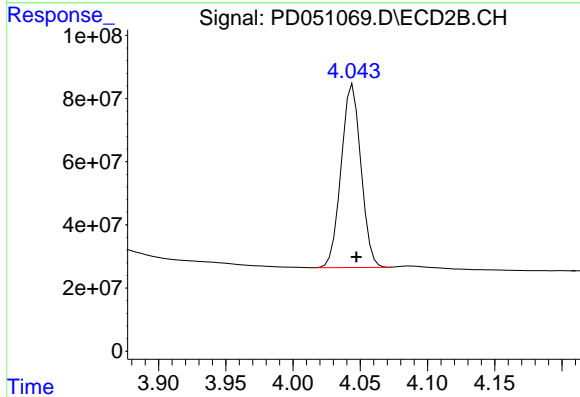
Volume Inj. : 2 µl  
 Signal #1 Phase : ZB-MR2 Signal #2 Phase: ZB-MR1  
 Signal #1 Info : 30M x 0.32mm x0.2 Signal #2 Info : 30M x 0.32mm x 0.50µm



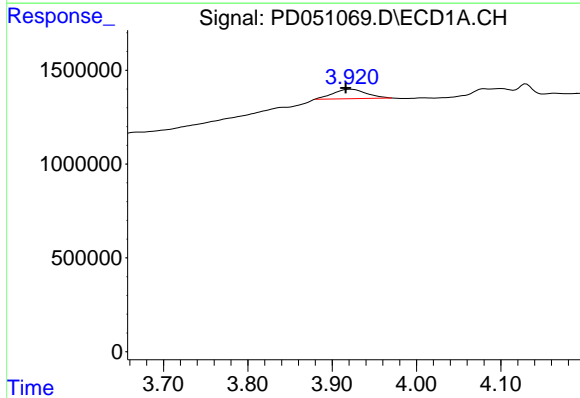


#1 Tetrachloro-m-xylene  
 R.T.: 3.225 min  
 Delta R.T.: -0.002 min  
 Response: 29800684  
 Conc: 19.95 ng/ml

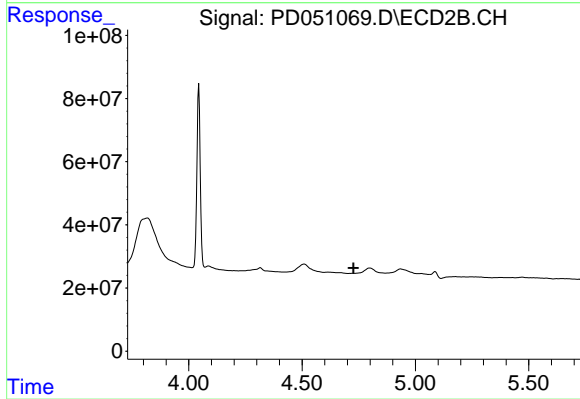
Instrument :  
 ECD\_D  
 ClientSampleId :



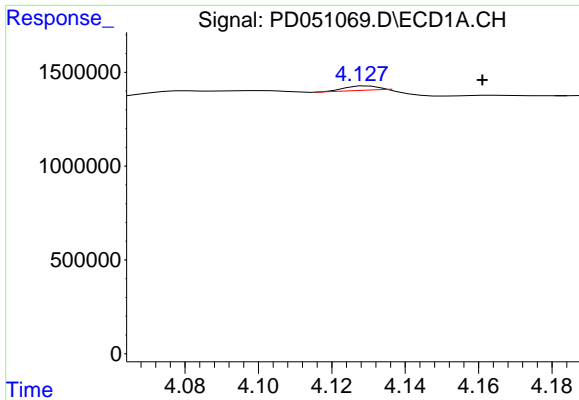
#1 Tetrachloro-m-xylene  
 R.T.: 4.044 min  
 Delta R.T.: -0.003 min  
 Response: 592474694  
 Conc: 19.91 ng/ml



#3 gamma-BHC (Lindane)  
 R.T.: 3.922 min  
 Delta R.T.: 0.006 min  
 Response: 1408663  
 Conc: 0.60 ng/ml

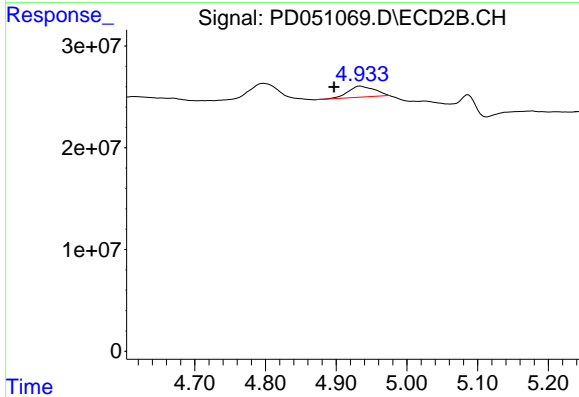


#3 gamma-BHC (Lindane)  
 R.T.: 0.000 min  
 Exp R.T. : 4.727 min  
 Response: 0  
 Conc: N.D.

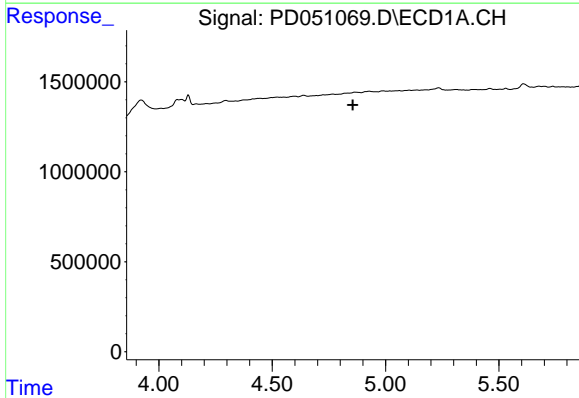


#6 beta-BHC  
 R.T.: 4.130 min  
 Delta R.T.: -0.031 min  
 Response: 183612  
 Conc: 0.19 ng/ml

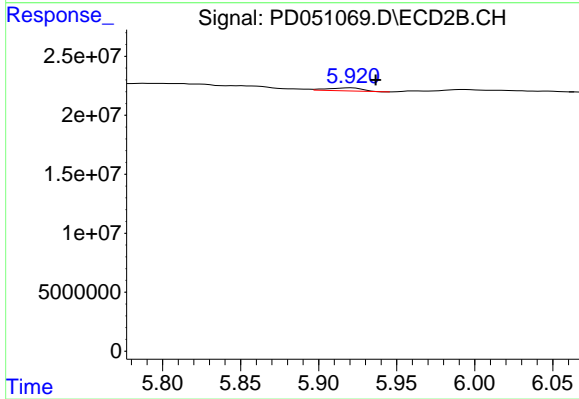
Instrument :  
 ECD\_D  
 ClientSampled :



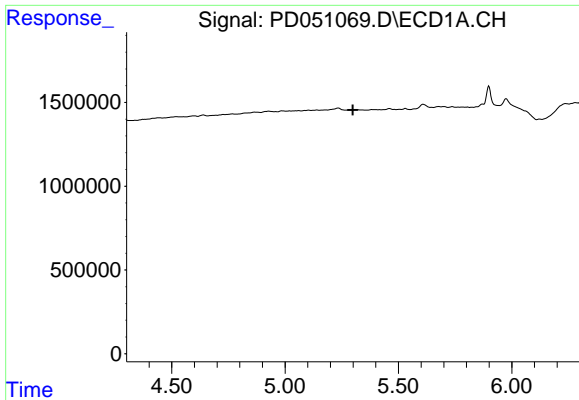
#6 beta-BHC  
 R.T.: 4.934 min  
 Delta R.T.: 0.037 min  
 Response: 27702575  
 Conc: 1.53 ng/ml



#8 Heptachlor epoxide  
 R.T.: 0.000 min  
 Exp R.T. : 4.855 min  
 Response: 0  
 Conc: N.D.



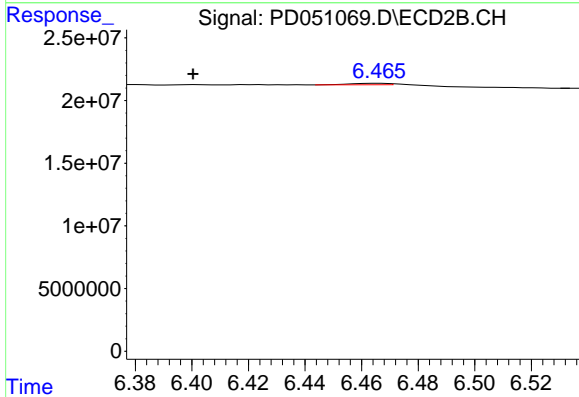
#8 Heptachlor epoxide  
 R.T.: 5.921 min  
 Delta R.T.: -0.016 min  
 Response: 4013149  
 Conc: 0.12 ng/ml



#12 4,4'-DDE

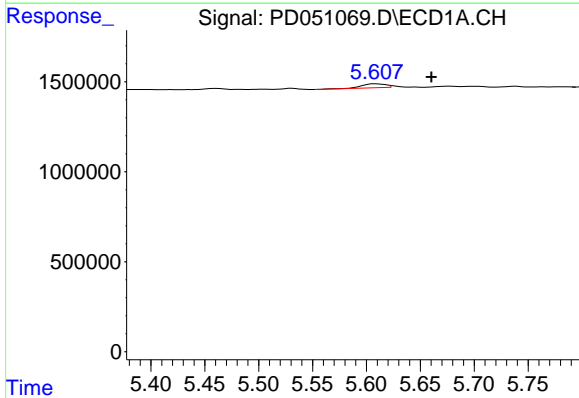
R.T.: 0.000 min  
 Exp R.T.: 5.299 min  
 Response: 0  
 Conc: N.D.

Instrument :  
 ECD\_D  
 ClientSampleId :



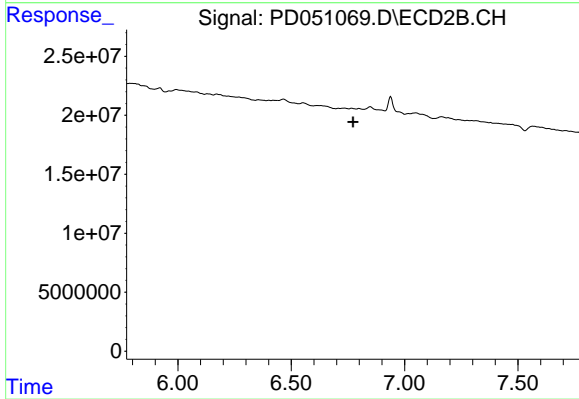
#12 4,4'-DDE

R.T.: 6.466 min  
 Delta R.T.: 0.066 min  
 Response: 1079738  
 Conc: 0.03 ng/ml



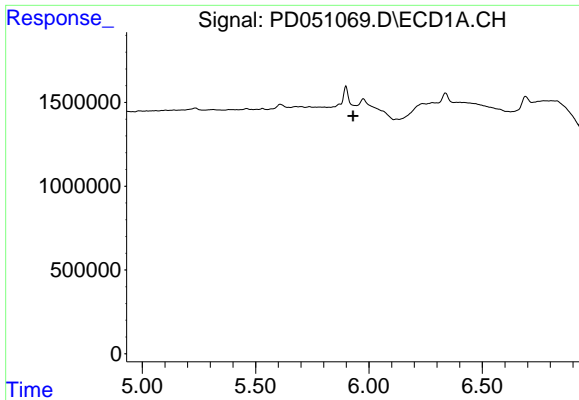
#14 Endrin

R.T.: 5.609 min  
 Delta R.T.: -0.052 min  
 Response: 348243  
 Conc: 0.16 ng/ml



#14 Endrin

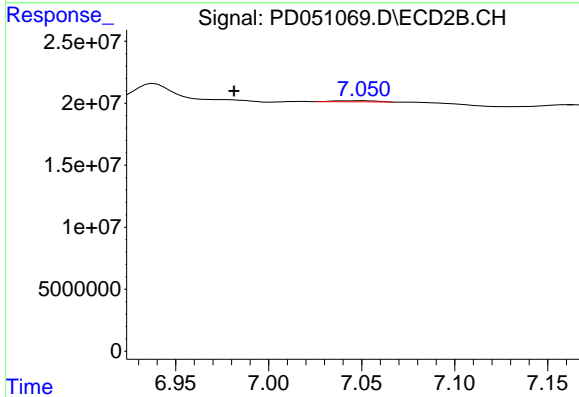
R.T.: 0.000 min  
 Exp R.T.: 6.773 min  
 Response: 0  
 Conc: N.D.



#15 Endosulfan II

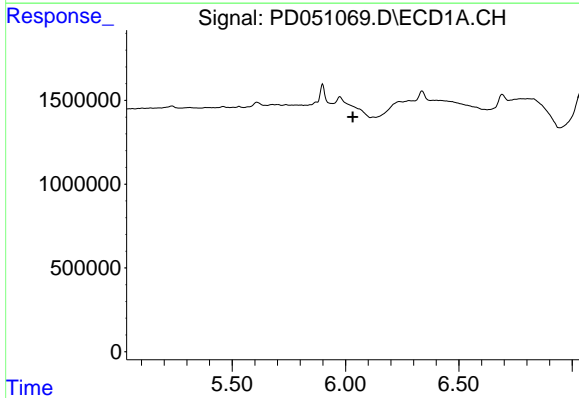
R.T.: 0.000 min  
 Exp R.T.: 5.930 min  
 Response: 0  
 Conc: N.D.

Instrument :  
 ECD\_D  
 ClientSampleId :



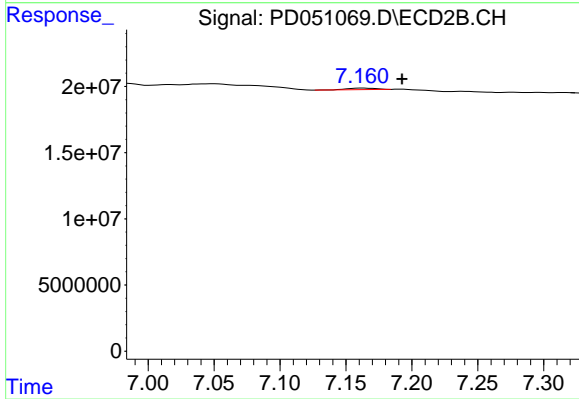
#15 Endosulfan II

R.T.: 7.051 min  
 Delta R.T.: 0.069 min  
 Response: 1288320  
 Conc: 0.05 ng/ml



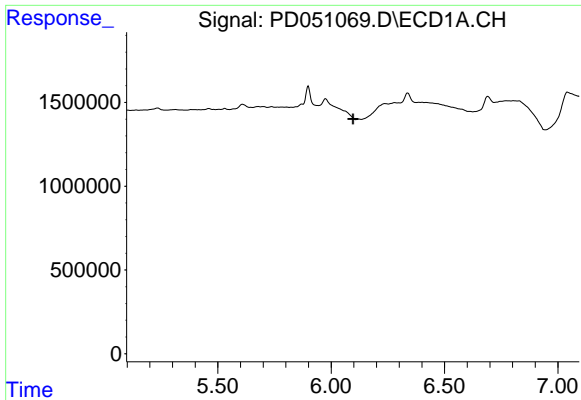
#17 4,4'-DDT

R.T.: 0.000 min  
 Exp R.T.: 6.032 min  
 Response: 0  
 Conc: N.D.



#17 4,4'-DDT

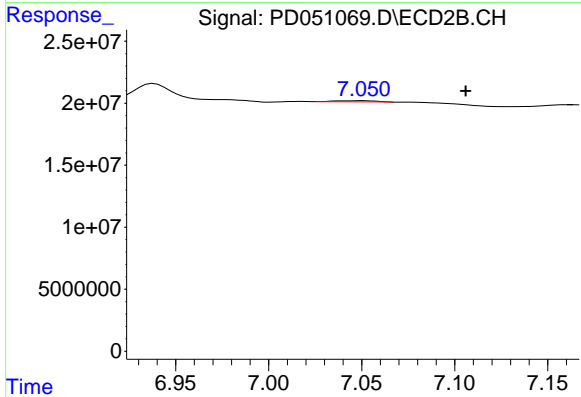
R.T.: 7.162 min  
 Delta R.T.: -0.030 min  
 Response: 1750625  
 Conc: 0.07 ng/ml



#18 Endrin aldehyde

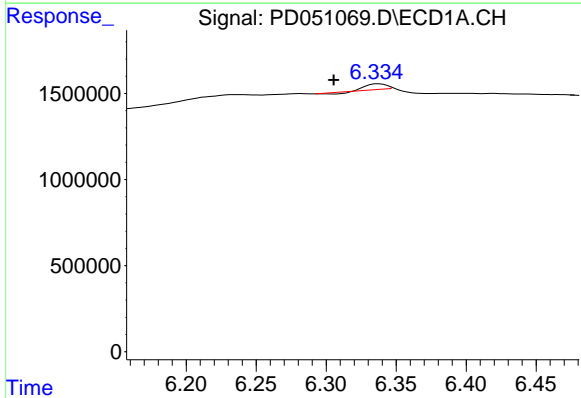
R.T.: 0.000 min  
 Exp R.T.: 6.097 min  
 Response: 0  
 Conc: N.D.

Instrument :  
 ECD\_D  
 ClientSampleId :



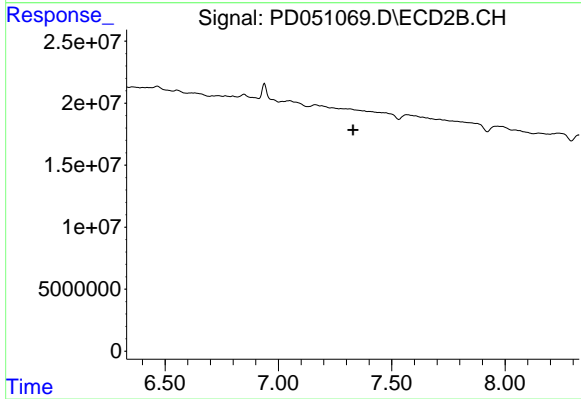
#18 Endrin aldehyde

R.T.: 7.051 min  
 Delta R.T.: -0.055 min  
 Response: 1288320  
 Conc: 0.06 ng/ml



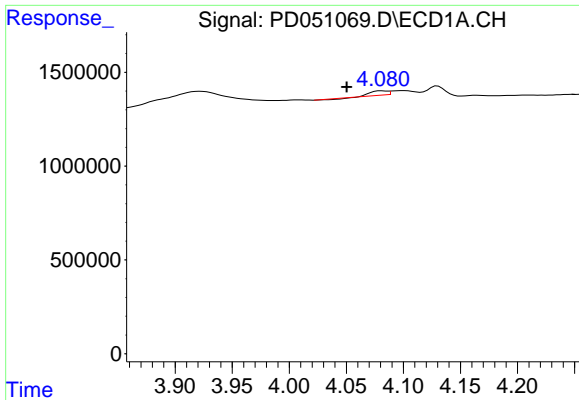
#19 Endosulfan Sulfate

R.T.: 6.337 min  
 Delta R.T.: 0.032 min  
 Response: 288950  
 Conc: 0.15 ng/ml



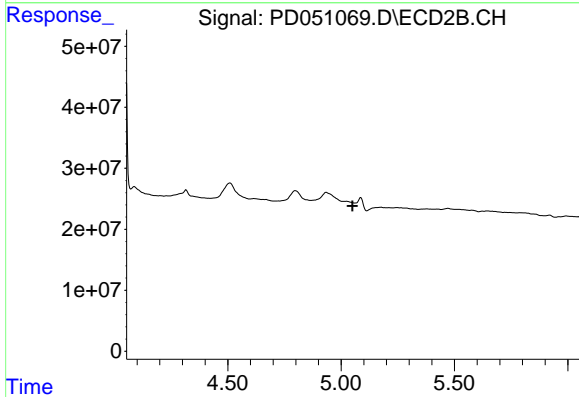
#19 Endosulfan Sulfate

R.T.: 0.000 min  
 Exp R.T.: 7.330 min  
 Response: 0  
 Conc: N.D.

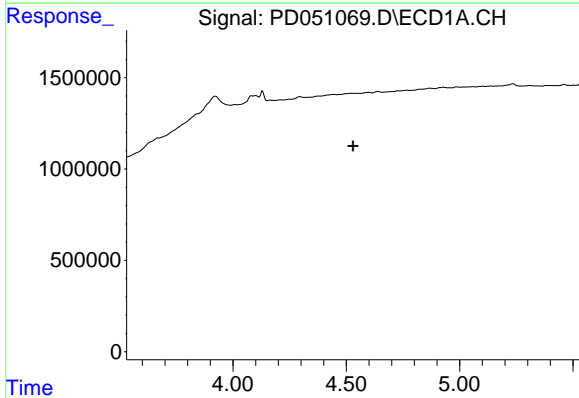


#23 Chlordane-1  
 R.T.: 4.081 min  
 Delta R.T.: 0.031 min  
 Response: 193418  
 Conc: 2.83 ng/ml

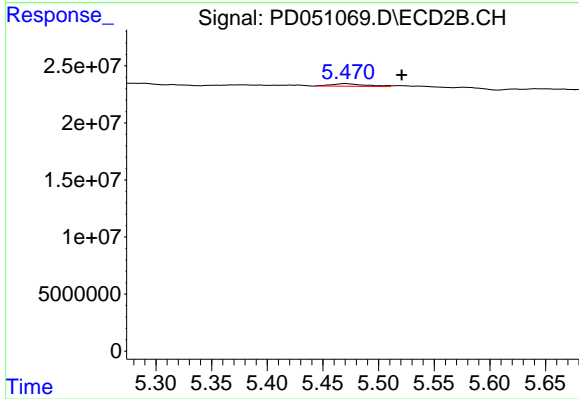
Instrument :  
 ECD\_D  
 ClientSampleId :



#23 Chlordane-1  
 R.T.: 0.000 min  
 Exp R.T. : 5.051 min  
 Response: 0  
 Conc: N.D.

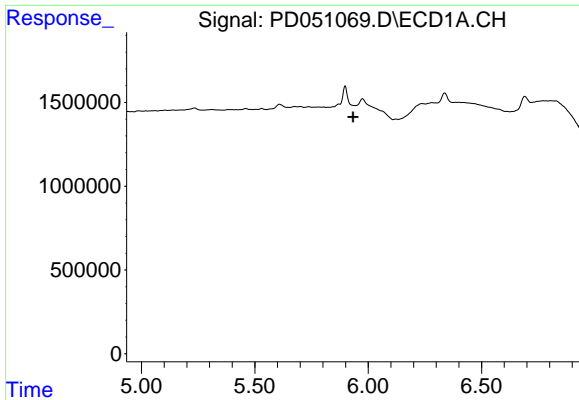


#24 Chlordane-2  
 R.T.: 0.000 min  
 Exp R.T. : 4.531 min  
 Response: 0  
 Conc: N.D.



#24 Chlordane-2  
 R.T.: 5.471 min  
 Delta R.T.: -0.049 min  
 Response: 4682774  
 Conc: 3.49 ng/ml

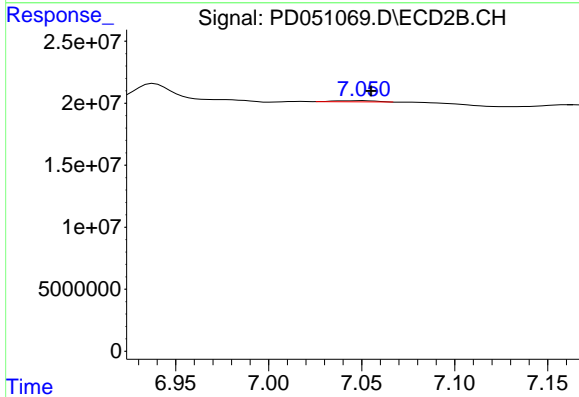




#27 Chlordane-5

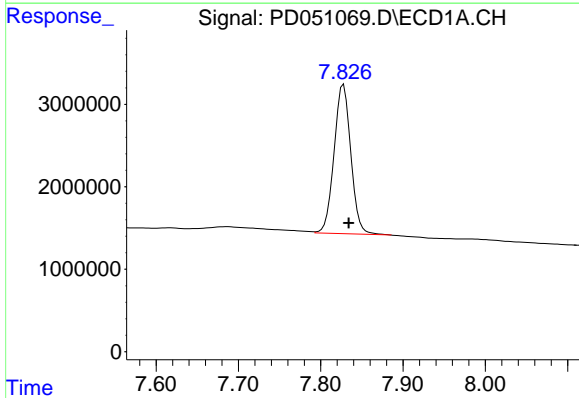
R.T.: 0.000 min  
 Exp R.T.: 5.934 min  
 Response: 0  
 Conc: N.D.

Instrument :  
 ECD\_D  
 ClientSampleId :



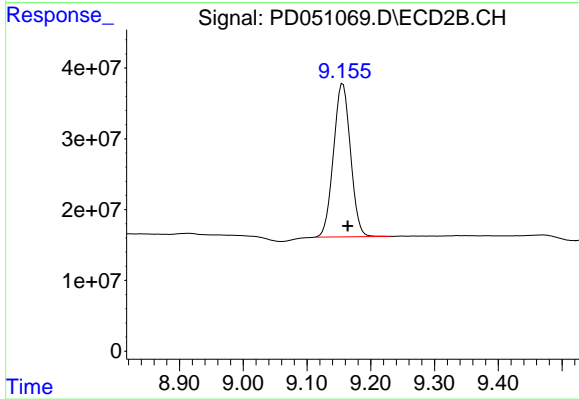
#27 Chlordane-5

R.T.: 7.051 min  
 Delta R.T.: -0.004 min  
 Response: 1288320  
 Conc: 1.25 ng/ml



#28 Decachlorobiphenyl

R.T.: 7.828 min  
 Delta R.T.: -0.006 min  
 Response: 25506571  
 Conc: 21.01 ng/ml



#28 Decachlorobiphenyl

R.T.: 9.156 min  
 Delta R.T.: -0.008 min  
 Response: 401428323  
 Conc: 20.12 ng/ml