

Data Path : Z:\pestpcbsrv\HPCHEM1\ECD_D\Data\PD011824\
 Data File : PD080806.D
 Signal(s) : Signal #1: ECD1A.ch Signal #2: ECD2B.ch
 Acq On : 18 Jan 2024 14:39
 Operator : AR\AJ
 Sample : PB158499BS
 Misc :
 ALS Vial : 5 Sample Multiplier: 1

Instrument :
 ECD_D
 ClientSampleId :
 PLCS499

Manual Integrations
APPROVED

Reviewed By :Abdul Mirza 01/19/2024
 Supervised By :Ankita Jodhani 01/19/2024

Integration File signal 1: autoint1.e
 Integration File signal 2: autoint2.e
 Quant Time: Jan 18 21:48:52 2024
 Quant Method : Z:\pestpcbsrv\HPCHEM1\ECD_D\Method\PD011024CLP.M
 Quant Title : GC Extractables
 QLast Update : Wed Jan 10 14:12:04 2024
 Response via : Initial Calibration
 Integrator: ChemStation

Volume Inj. : 1 µl
 Signal #1 Phase : ZB-MR2 Signal #2 Phase: ZB-MR2
 Signal #1 Info : 30M x 0.32mm x0.5 Signal #2 Info : 30M x 0.32mm x 0.25µm

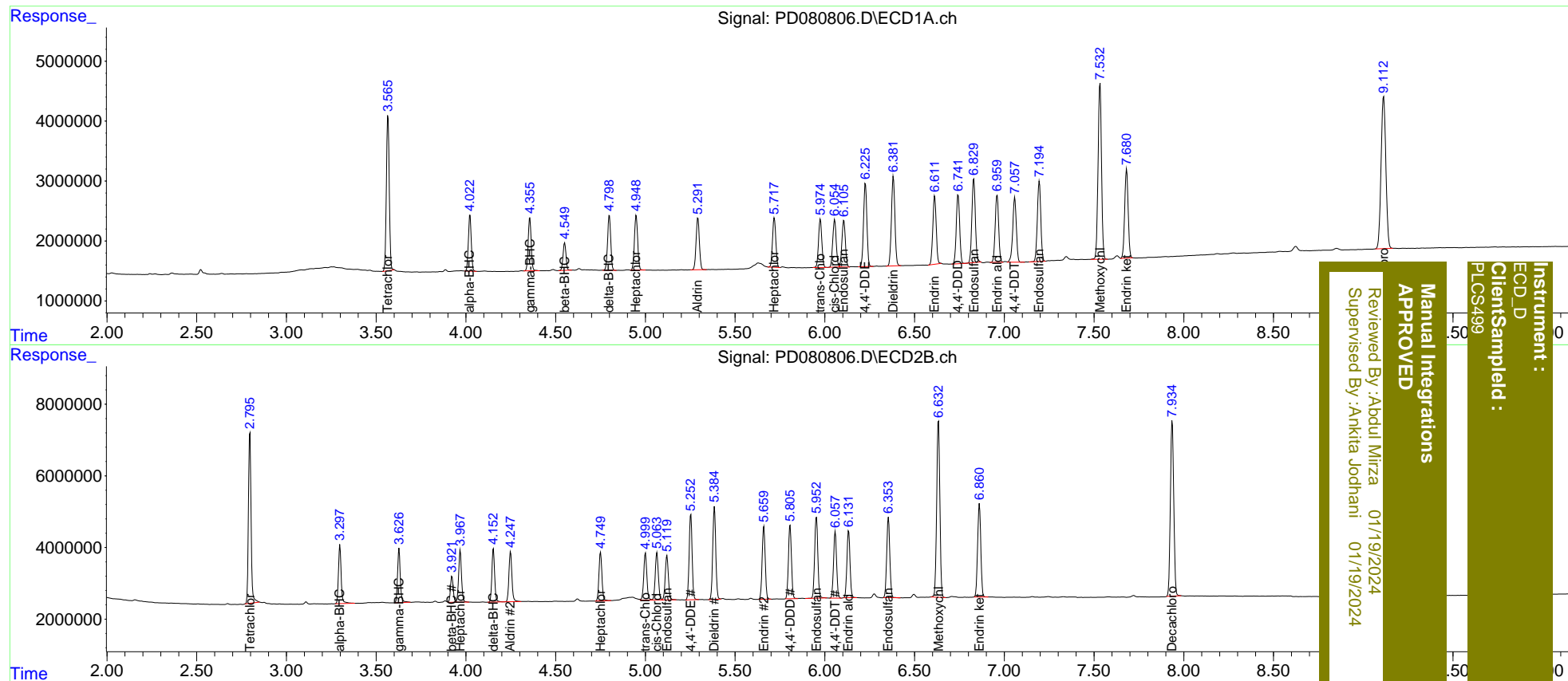
| Compound | RT#1 | RT#2 | Resp#1 | Resp#2 | ng/ml | ng/ml |
|-----------------------------|-------|-------|----------|----------|---------|--------|
| ----- | | | | | | |
| System Monitoring Compounds | | | | | | |
| 1) SA Tetrachlo... | 3.566 | 2.797 | 28957007 | 48851061 | 20.349 | 19.131 |
| 27) SA Decachlor... | 9.114 | 7.936 | 47234336 | 63951790 | 24.049 | 23.917 |
| Target Compounds | | | | | | |
| 2) A alpha-BHC | 4.023 | 3.298 | 10537745 | 17236255 | 4.475 | 4.213 |
| 3) MA gamma-BHC... | 4.356 | 3.628 | 10285391 | 16018713 | 4.492 | 4.198 |
| 4) MA Heptachlor | 4.949 | 3.968 | 11549376 | 16094601 | 4.777 | 4.357 |
| 5) MB Aldrin | 5.293 | 4.249 | 11102632 | 16237545 | 4.905 | 4.439 |
| 6) B beta-BHC | 4.551 | 3.923 | 5208708 | 7732395 | 5.051 | 4.383 |
| 7) B delta-BHC | 4.800 | 4.153 | 11195279 | 15985281 | 4.693 | 4.062 |
| 8) B Heptachlo... | 5.719 | 4.751 | 10432464 | 15692815 | 4.790 | 4.570 |
| 9) A Endosulfan I | 6.105 | 5.120 | 10219188 | 14863701 | 4.815m | 4.621 |
| 10) B trans-Chl... | 5.975 | 5.001 | 10321244 | 15756931 | 5.004 | 4.731 |
| 11) B cis-Chlor... | 6.054 | 5.065 | 10541145 | 15760886 | 4.967m | 4.589 |
| 12) B 4,4'-DDE | 6.226 | 5.253 | 18089003 | 27376130 | 9.201 | 8.692 |
| 13) MA Dieldrin | 6.382 | 5.385 | 20030954 | 30300882 | 8.974 | 8.563 |
| 14) MA Endrin | 6.612 | 5.660 | 15054487 | 24011787 | 8.268 | 8.089 |
| 15) B Endosulfa... | 6.830 | 5.953 | 18801480 | 28154931 | 9.609 | 9.486 |
| 16) A 4,4'-DDD | 6.743 | 5.807 | 15124407 | 24227962 | 9.058 | 8.944 |
| 17) MA 4,4'-DDT | 7.058 | 6.058 | 14997543 | 21872492 | 8.843 | 8.125 |
| 18) B Endrin al... | 6.960 | 6.133 | 14942840 | 22293535 | 10.376 | 9.955 |
| 19) B Endosulfa... | 7.195 | 6.355 | 17906685 | 26794278 | 9.998 | 9.575 |
| 20) A Methoxychlor | 7.533 | 6.633 | 39058826 | 60756020 | 42.289 | 42.918 |
| 21) B Endrin ke... | 7.680 | 6.861 | 19816054 | 32037424 | 10.087m | 10.182 |

(f)=RT Delta > 1/2 Window (#)=Amounts differ by > 25% (m)=manual int.

Data Path : Z:\pestpcbsrv\HPCHEM1\ECD_D\Data\PD011824\
 Data File : PD080806.D
 Signal(s) : Signal #1: ECD1A.ch Signal #2: ECD2B.ch
 Acq On : 18 Jan 2024 14:39
 Operator : AR\AJ
 Sample : PB158499BS
 Misc :
 ALS Vial : 5 Sample Multiplier: 1

Integration File signal 1: autoint1.e
 Integration File signal 2: autoint2.e
 Quant Time: Jan 18 21:48:52 2024
 Quant Method : Z:\pestpcbsrv\HPCHEM1\ECD_D\Method\PD011024CLP.M
 Quant Title : GC Extractables
 QLast Update : Wed Jan 10 14:12:04 2024
 Response via : Initial Calibration
 Integrator: ChemStation

Volume Inj. : 1 µl
 Signal #1 Phase : ZB-MR1 Signal #2 Phase: ZB-MR2
 Signal #1 Info : 30M x 0.32mm x0.5 Signal #2 Info : 30M x 0.32mm x 0.25µm



Manual Integrations APPROVED
 Reviewed By: Abdul Mirza 01/19/2024
 Supervised By: Ankita Jodhani 01/19/2024
Instrument : ECD_D
Client/Sampled : PLCS499