

Data Path : Z:\pestpcbsrv\HPCHEM1\ECD_D\Data\PD011923\
 Data File : PD073653.D
 Signal(s) : Signal #1: ECD1A.ch Signal #2: ECD2B.ch
 Acq On : 19 Jan 2023 09:38
 Operator : AR\AJ
 Sample : PCTDCCC050
 Misc :
 ALS Vial : 4 Sample Multiplier: 1

Instrument :
 ECD_D
 ClientSampleId :

Integration File signal 1: autoint1.e
 Integration File signal 2: autoint2.e
 Quant Time: Jan 19 20:35:45 2023
 Quant Method : Z:\pestpcbsrv\HPCHEM1\ECD_D\Method\PD011823.M
 Quant Title : GC Extractables
 QLast Update : Thu Jan 19 02:45:26 2023
 Response via : Initial Calibration
 Integrator: ChemStation

Volume Inj. : 2 µl
 Signal #1 Phase : ZB-MR2 Signal #2 Phase: ZB-MR2
 Signal #1 Info : 30M x 0.32mm x0.5 Signal #2 Info : 30M x 0.32mm x 0.25µm

Compound	RT#1	RT#2	Resp#1	Resp#2	ng/ml	ng/ml
System Monitoring Compounds						
1) SA Tetrachlo...	3.561	2.775	116.7E6	65597143	49.919	51.527
28) SA Decachlor...	9.111	7.936	137.9E6	58622890	48.930	50.387
Target Compounds						
2) A alpha-BHC	4.019	3.279	206.9E6	90355972	52.079	53.031
3) MA gamma-BHC...	4.352	3.610	185.8E6	79316381	50.592	52.731
4) MA Heptachlor	4.946	3.953	193.0E6	68149057	51.983	50.892
5) MB Aldrin	5.289	4.235	185.5E6	84457589	51.448	52.288
6) B beta-BHC	4.545	3.906	74809882	34068620	48.223	51.408
7) B delta-BHC	4.795	4.137	185.3E6	79750308	55.075	52.174
8) B Heptachlo...	5.716	4.738	163.0E6	69215840	51.075	51.440
9) A Endosulfan I	6.103	5.109	155.3E6	68732362	50.583	51.120
10) B gamma-Chl...	5.972	4.989	168.2E6	76519909	51.083	51.703
11) B alpha-Chl...	6.052	5.054	166.3E6	76876134	50.414	51.686
12) B 4,4'-DDE	6.224	5.244	154.7E6	68278286	51.230	51.170
13) MA Dieldrin	6.379	5.375	163.6E6	66882720	51.298	51.024
14) MA Endrin	6.609	5.650	131.5E6	56161528	48.512	50.504
15) B Endosulfa...	6.827	5.944	131.3E6	58792831	49.596	50.482
16) A 4,4'-DDD	6.741	5.799	125.6E6	52606492	50.915	51.056
17) MA 4,4'-DDT	7.057	6.051	139.1E6	52888987	49.970	51.346
18) B Endrin al...	6.957	6.124	106.6E6	44444054	49.137	50.390
19) B Endosulfa...	7.191	6.347	133.0E6	58018976	49.666	51.542
20) A Methoxychlor	7.531	6.628	74561715	26408992	48.132	50.456
21) B Endrin ke...	7.678	6.855	152.9E6	65814341	50.548	51.367
22) Mirex	8.156	7.040	110.8E6	54480236	48.229	51.875
25) Chlordane-3	5.972	4.989	168.2E6	76519909	359.221	530.048 #
26) Chlordane-4	6.052	5.054	166.3E6	76876134	290.535	551.514 #
27) Chlordane-5	0.000	5.944	0	58792831	N.D.	1169.998 #

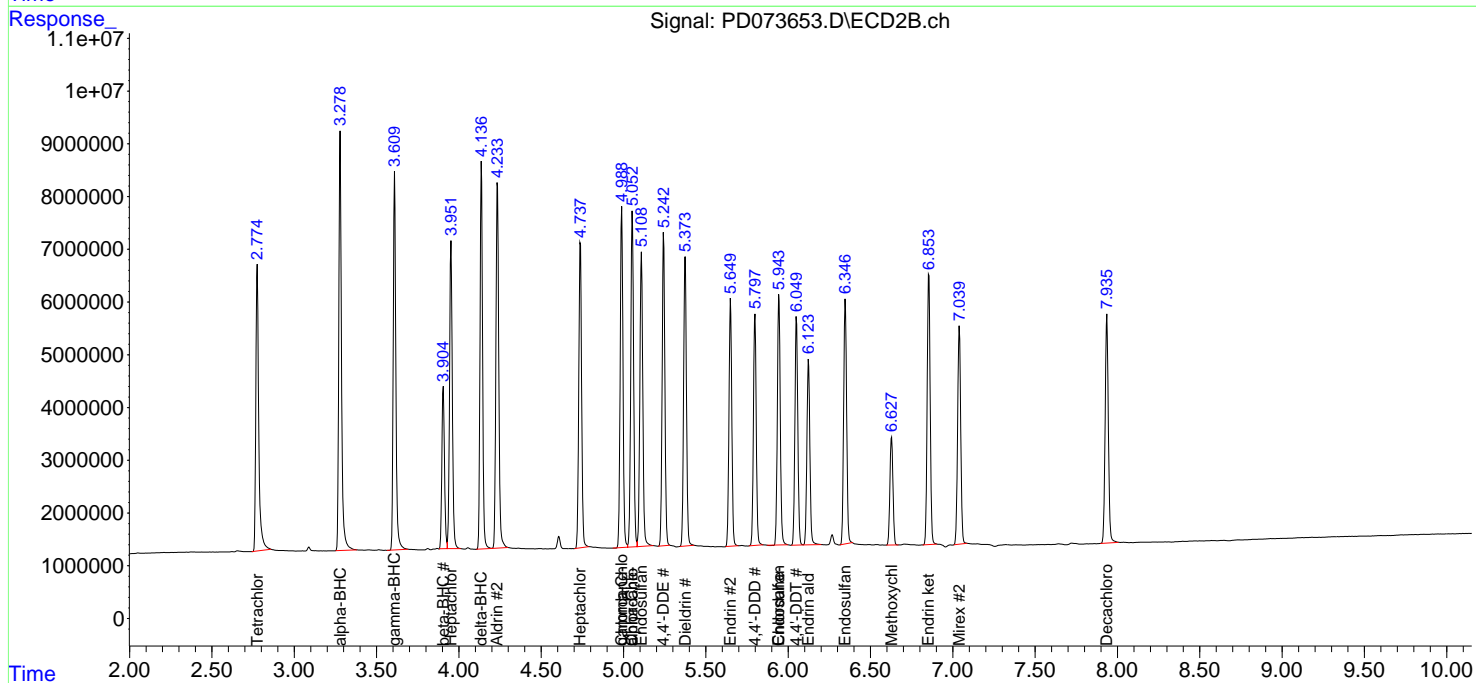
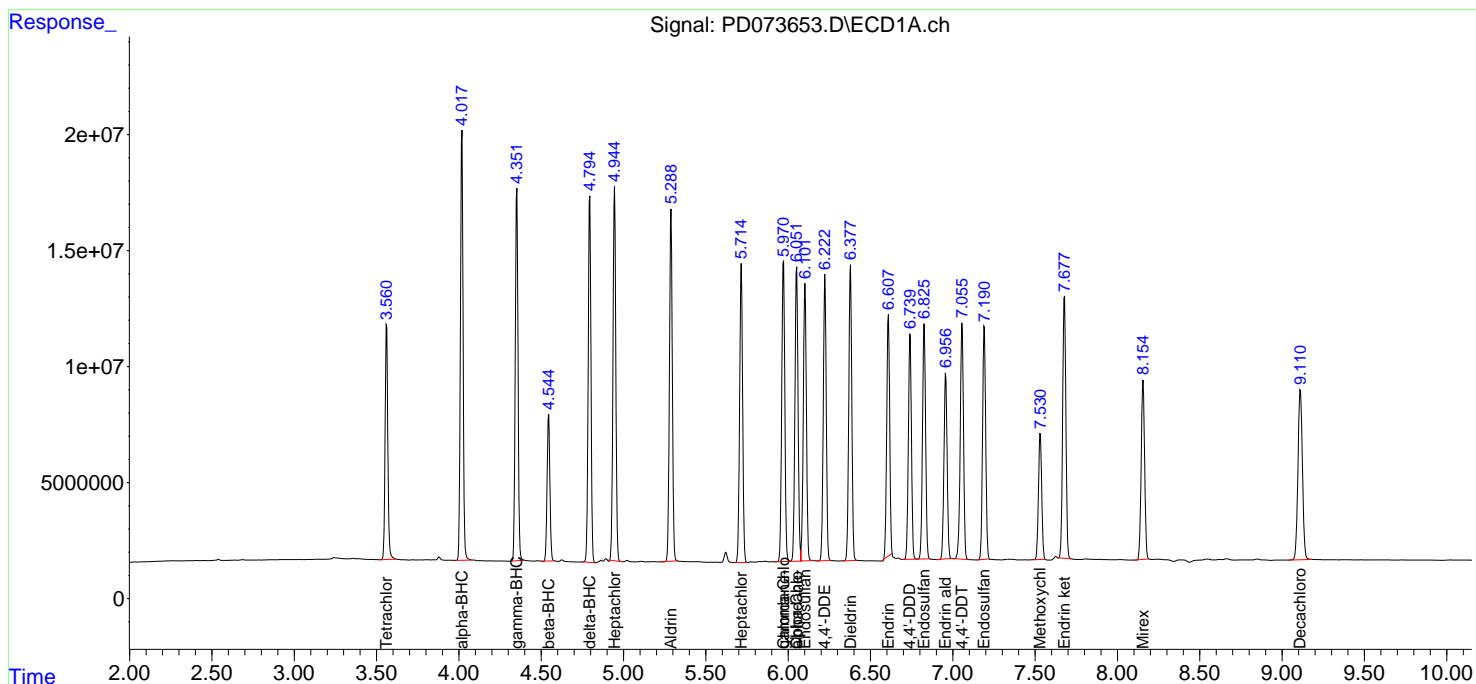
(f)=RT Delta > 1/2 Window (#)=Amounts differ by > 25% (m)=manual int.

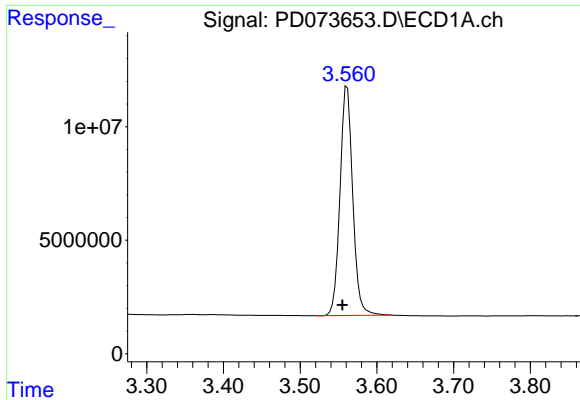
Data Path : Z:\pestpcbsrv\HPCHEM1\ECD_D\Data\PD011923\
 Data File : PD073653.D
 Signal(s) : Signal #1: ECD1A.ch Signal #2: ECD2B.ch
 Acq On : 19 Jan 2023 09:38
 Operator : AR\AJ
 Sample : PCTDCCC050
 Misc :
 ALS Vial : 4 Sample Multiplier: 1

Instrument :
 ECD_D
 ClientSampleId :

Integration File signal 1: autoint1.e
 Integration File signal 2: autoint2.e
 Quant Time: Jan 19 20:35:45 2023
 Quant Method : Z:\pestpcbsrv\HPCHEM1\ECD_D\Method\PD011823.M
 Quant Title : GC Extractables
 QLast Update : Thu Jan 19 02:45:26 2023
 Response via : Initial Calibration
 Integrator: ChemStation

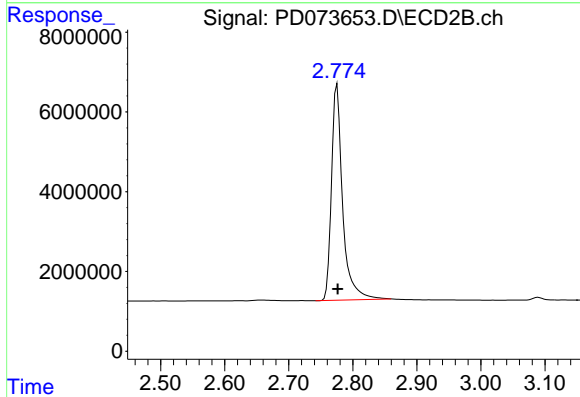
Volume Inj. : 2 µl
 Signal #1 Phase : ZB-MR1 Signal #2 Phase: ZB-MR2
 Signal #1 Info : 30M x 0.32mm x0.5 Signal #2 Info : 30M x 0.32mm x 0.25µm



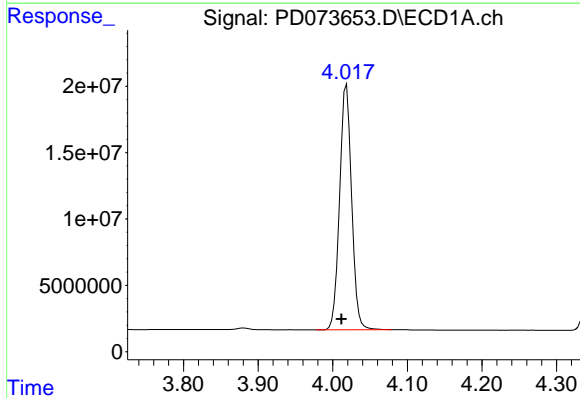


#1 Tetrachloro-m-xylene
 R.T.: 3.561 min
 Delta R.T.: 0.006 min
 Response: 116685512
 Conc: 49.92 ng/ml

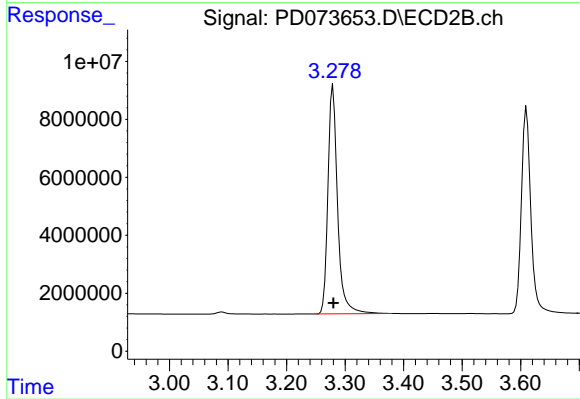
Instrument :
 ECD_D
 ClientSampleId :



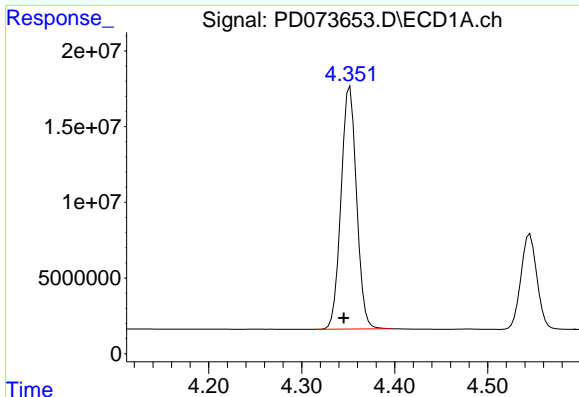
#1 Tetrachloro-m-xylene
 R.T.: 2.775 min
 Delta R.T.: -0.001 min
 Response: 65597143
 Conc: 51.53 ng/ml



#2 alpha-BHC
 R.T.: 4.019 min
 Delta R.T.: 0.007 min
 Response: 206850101
 Conc: 52.08 ng/ml



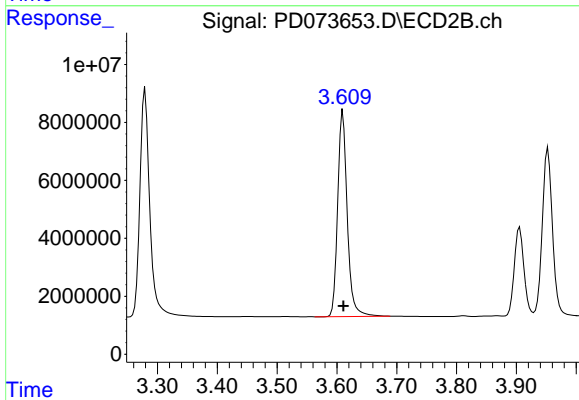
#2 alpha-BHC
 R.T.: 3.279 min
 Delta R.T.: -0.001 min
 Response: 90355972
 Conc: 53.03 ng/ml



#3 gamma-BHC (Lindane)

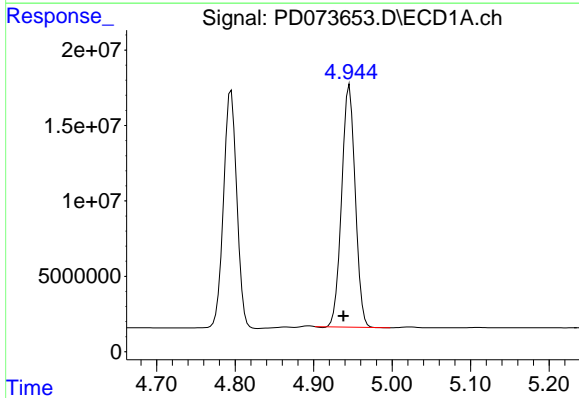
R.T.: 4.352 min
 Delta R.T.: 0.007 min
 Response: 185753345
 Conc: 50.59 ng/ml

Instrument :
 ECD_D
 ClientSampleId :



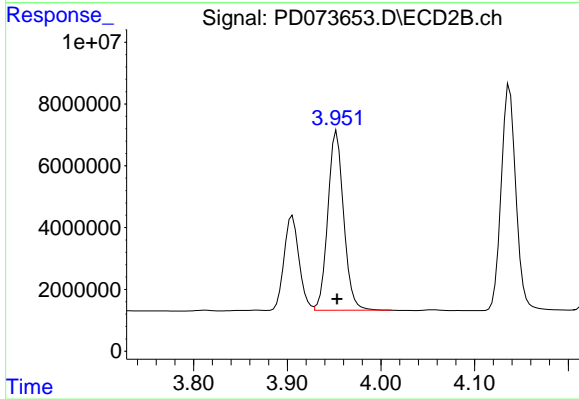
#3 gamma-BHC (Lindane)

R.T.: 3.610 min
 Delta R.T.: 0.000 min
 Response: 79316381
 Conc: 52.73 ng/ml



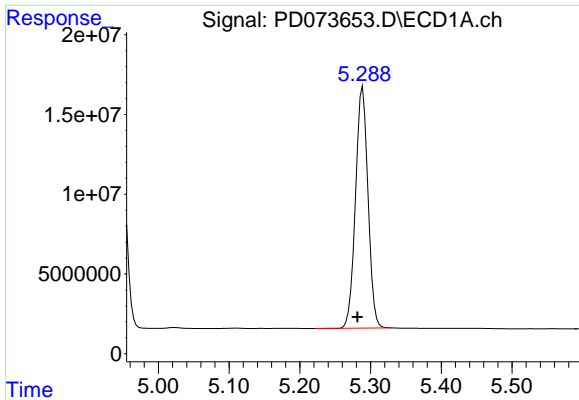
#4 Heptachlor

R.T.: 4.946 min
 Delta R.T.: 0.008 min
 Response: 193031130
 Conc: 51.98 ng/ml



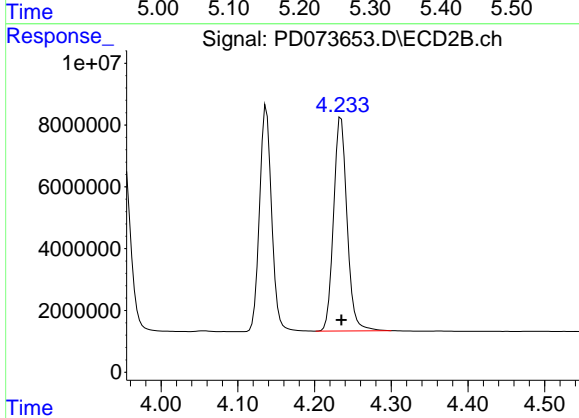
#4 Heptachlor

R.T.: 3.953 min
 Delta R.T.: 0.000 min
 Response: 68149057
 Conc: 50.89 ng/ml

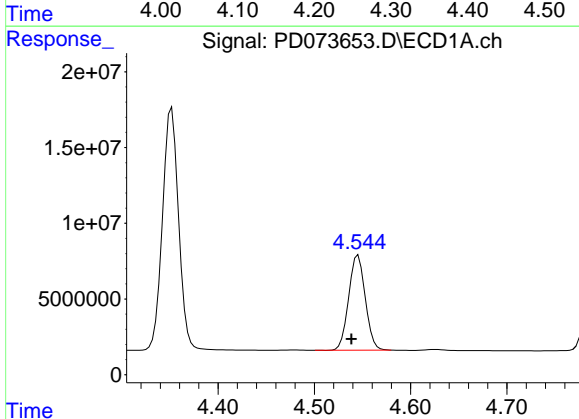


#5 Aldrin
 R.T.: 5.289 min
 Delta R.T.: 0.007 min
 Response: 185457223
 Conc: 51.45 ng/ml

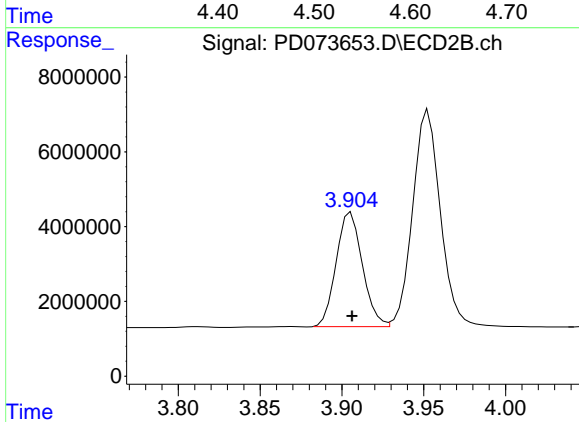
Instrument :
 ECD_D
 ClientSampleId :



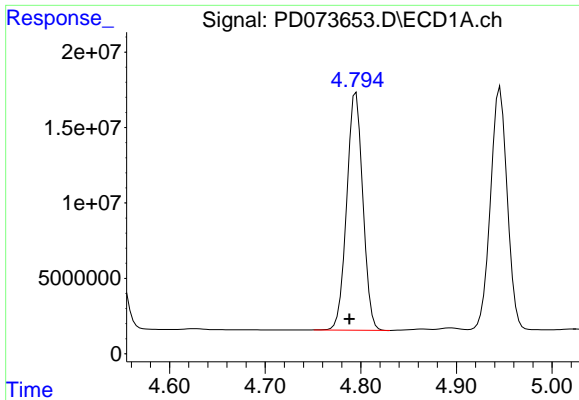
#5 Aldrin
 R.T.: 4.235 min
 Delta R.T.: 0.000 min
 Response: 84457589
 Conc: 52.29 ng/ml



#6 beta-BHC
 R.T.: 4.545 min
 Delta R.T.: 0.007 min
 Response: 74809882
 Conc: 48.22 ng/ml



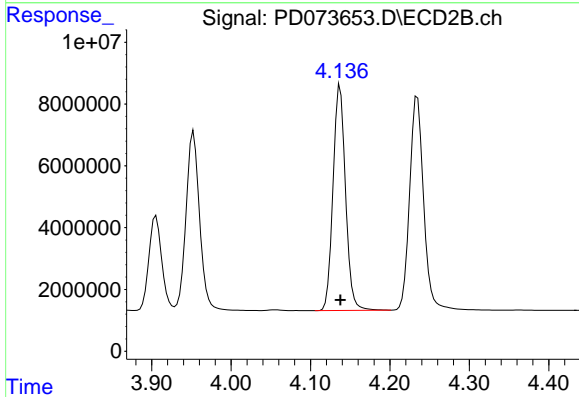
#6 beta-BHC
 R.T.: 3.906 min
 Delta R.T.: 0.000 min
 Response: 34068620
 Conc: 51.41 ng/ml



#7 delta-BHC

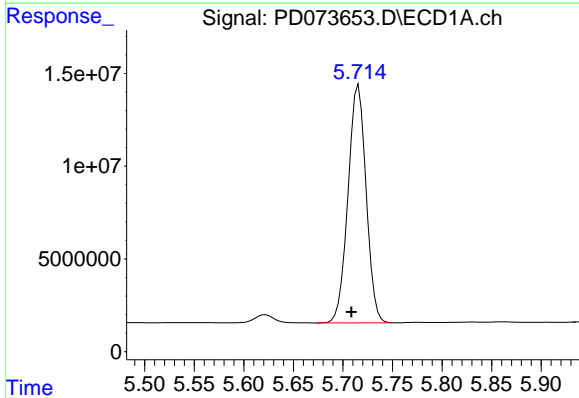
R.T.: 4.795 min
 Delta R.T.: 0.007 min
 Response: 185331245
 Conc: 55.08 ng/ml

Instrument :
 ECD_D
 ClientSampleId :



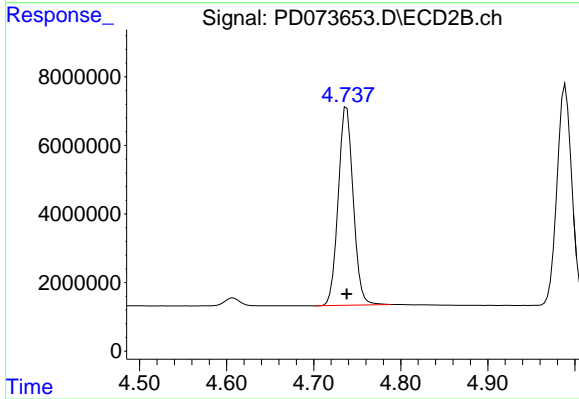
#7 delta-BHC

R.T.: 4.137 min
 Delta R.T.: 0.000 min
 Response: 79750308
 Conc: 52.17 ng/ml



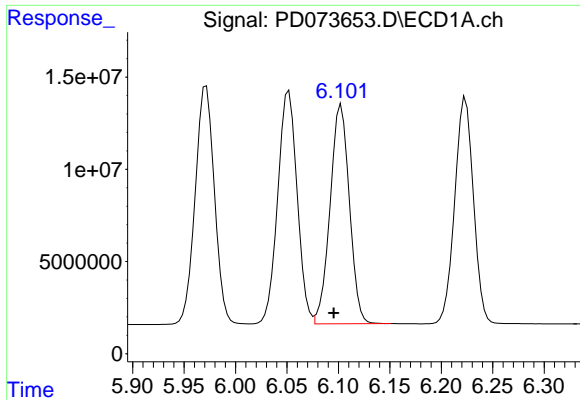
#8 Heptachlor epoxide

R.T.: 5.716 min
 Delta R.T.: 0.007 min
 Response: 162998965
 Conc: 51.08 ng/ml



#8 Heptachlor epoxide

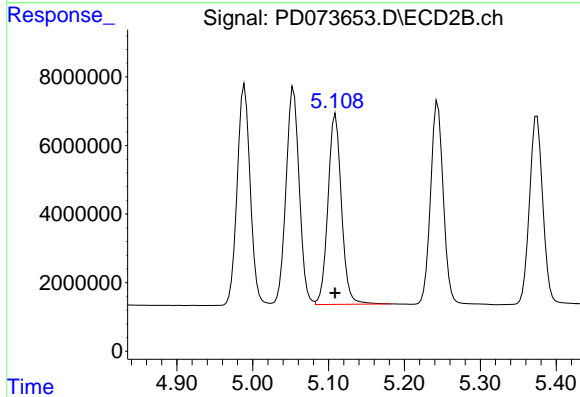
R.T.: 4.738 min
 Delta R.T.: 0.000 min
 Response: 69215840
 Conc: 51.44 ng/ml



#9 Endosulfan I

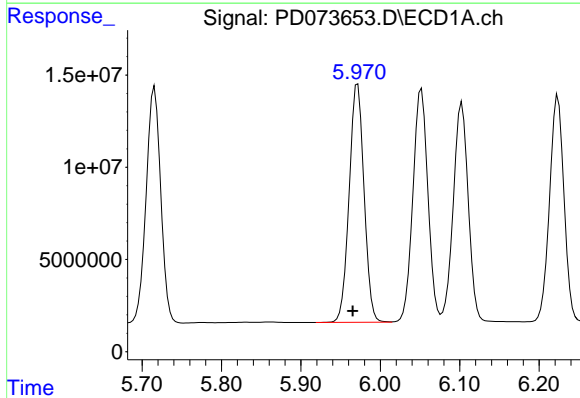
R.T.: 6.103 min
 Delta R.T.: 0.007 min
 Response: 155322080
 Conc: 50.58 ng/ml

Instrument :
 ECD_D
 ClientSampleId :



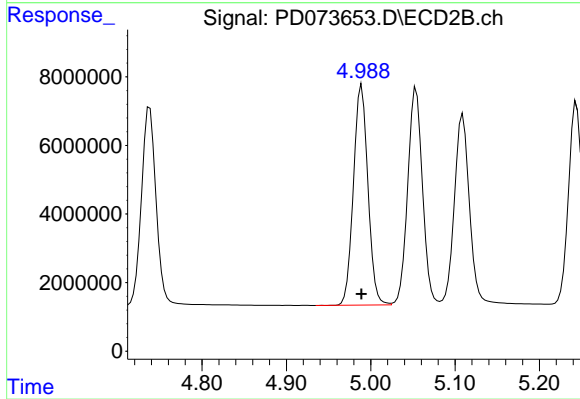
#9 Endosulfan I

R.T.: 5.109 min
 Delta R.T.: 0.000 min
 Response: 68732362
 Conc: 51.12 ng/ml



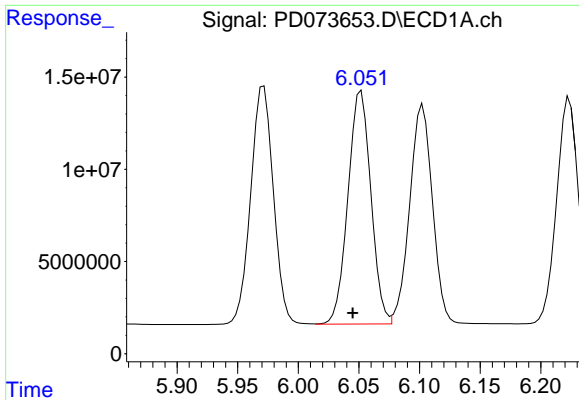
#10 gamma-Chlordane

R.T.: 5.972 min
 Delta R.T.: 0.006 min
 Response: 168185472
 Conc: 51.08 ng/ml



#10 gamma-Chlordane

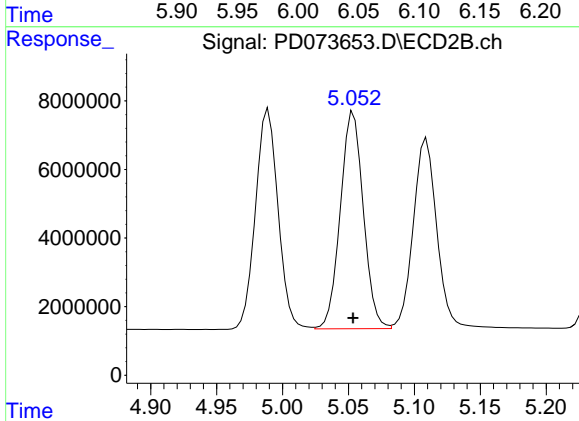
R.T.: 4.989 min
 Delta R.T.: 0.000 min
 Response: 76519909
 Conc: 51.70 ng/ml



#11 alpha-Chlordane

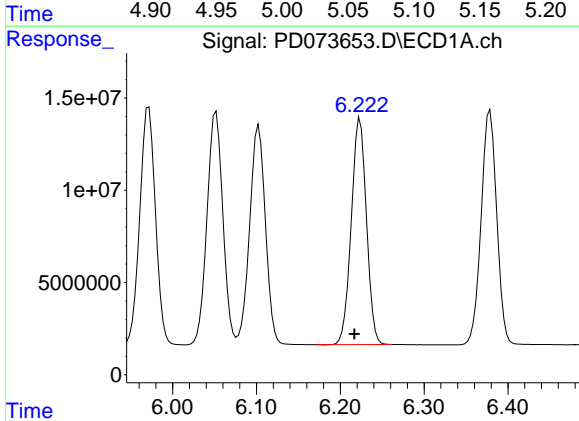
R.T.: 6.052 min
 Delta R.T.: 0.007 min
 Response: 166307333
 Conc: 50.41 ng/ml

Instrument :
 ECD_D
 ClientSampleId :



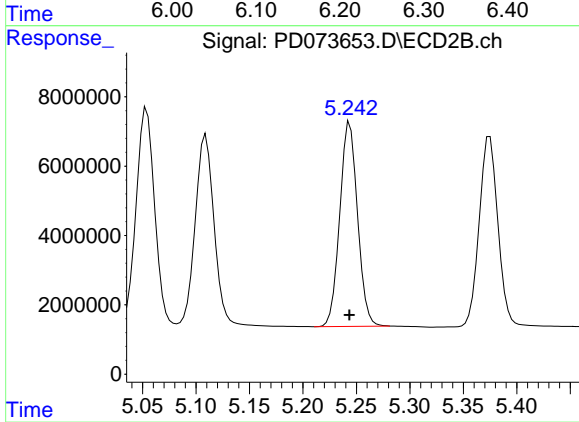
#11 alpha-Chlordane

R.T.: 5.054 min
 Delta R.T.: 0.000 min
 Response: 76876134
 Conc: 51.69 ng/ml



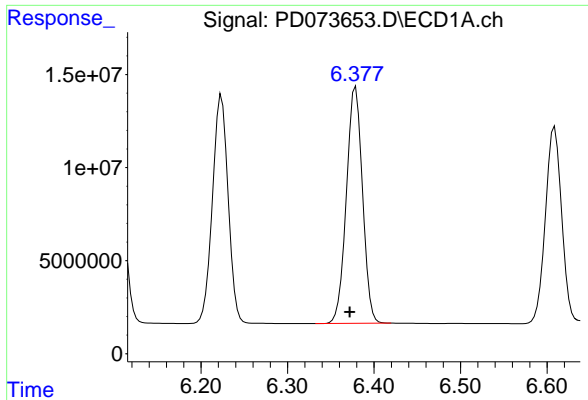
#12 4,4'-DDE

R.T.: 6.224 min
 Delta R.T.: 0.007 min
 Response: 154730280
 Conc: 51.23 ng/ml



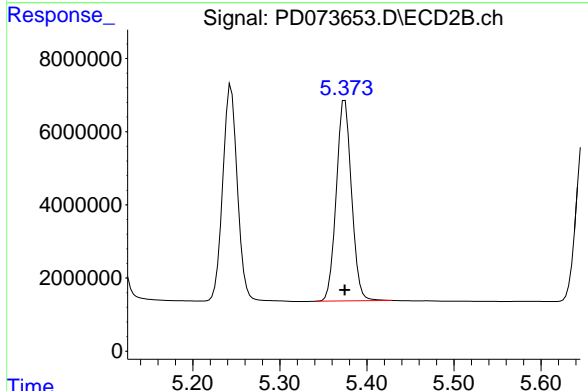
#12 4,4'-DDE

R.T.: 5.244 min
 Delta R.T.: 0.000 min
 Response: 68278286
 Conc: 51.17 ng/ml

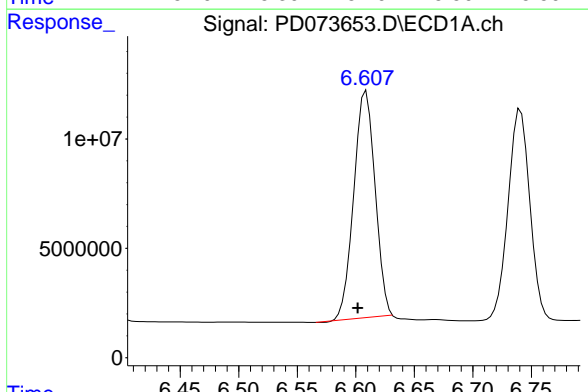


#13 Dieldrin
 R.T.: 6.379 min
 Delta R.T.: 0.007 min
 Response: 163563052
 Conc: 51.30 ng/ml

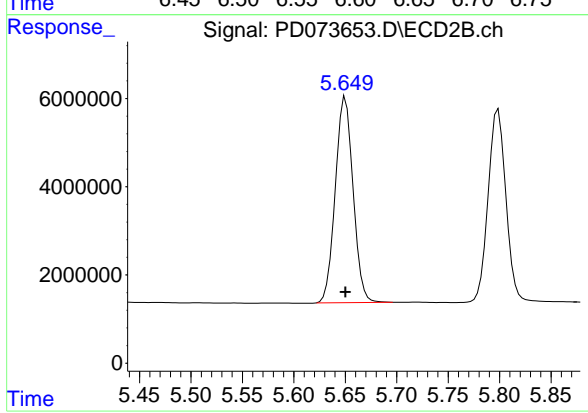
Instrument :
 ECD_D
 ClientSampleId :



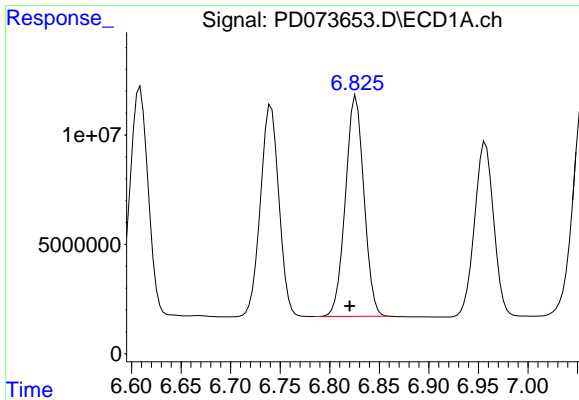
#13 Dieldrin
 R.T.: 5.375 min
 Delta R.T.: 0.000 min
 Response: 66882720
 Conc: 51.02 ng/ml



#14 Endrin
 R.T.: 6.609 min
 Delta R.T.: 0.007 min
 Response: 131518149
 Conc: 48.51 ng/ml



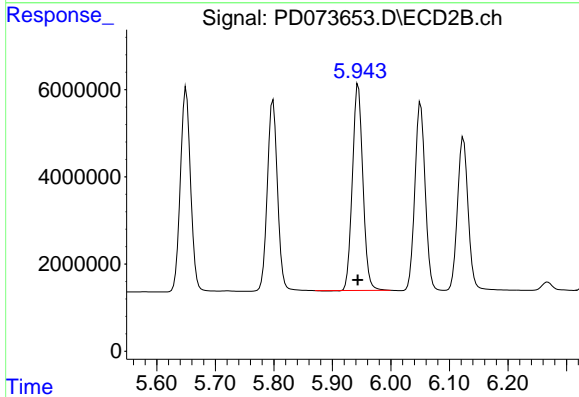
#14 Endrin
 R.T.: 5.650 min
 Delta R.T.: 0.000 min
 Response: 56161528
 Conc: 50.50 ng/ml



#15 Endosulfan II

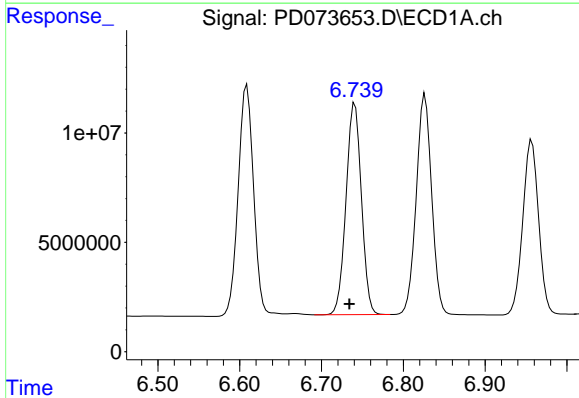
R.T.: 6.827 min
 Delta R.T.: 0.006 min
 Response: 131336458
 Conc: 49.60 ng/ml

Instrument :
 ECD_D
 ClientSampleId :



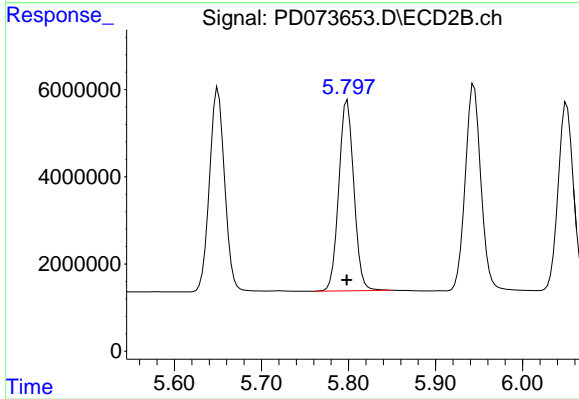
#15 Endosulfan II

R.T.: 5.944 min
 Delta R.T.: 0.000 min
 Response: 58792831
 Conc: 50.48 ng/ml



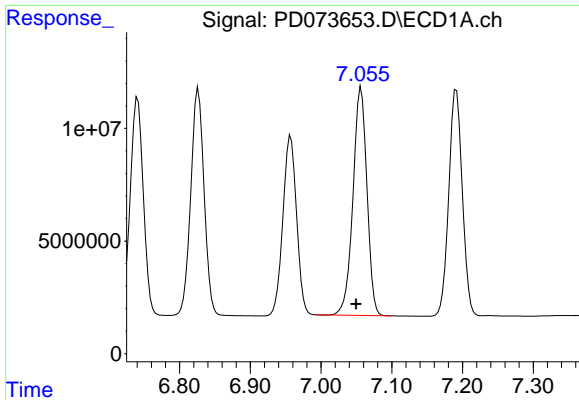
#16 4,4'-DDD

R.T.: 6.741 min
 Delta R.T.: 0.007 min
 Response: 125570548
 Conc: 50.91 ng/ml



#16 4,4'-DDD

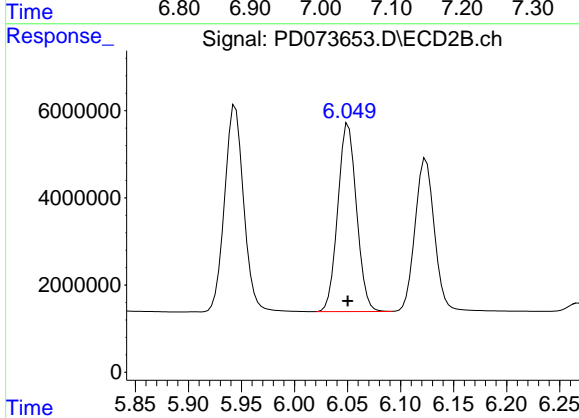
R.T.: 5.799 min
 Delta R.T.: 0.000 min
 Response: 52606492
 Conc: 51.06 ng/ml



#17 4,4'-DDT

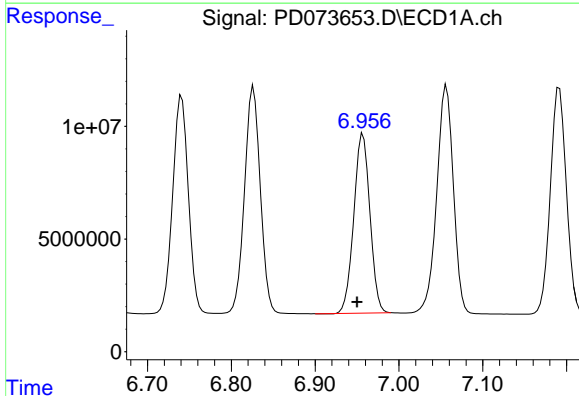
R.T.: 7.057 min
 Delta R.T.: 0.007 min
 Response: 139121506
 Conc: 49.97 ng/ml

Instrument :
 ECD_D
 ClientSampleId :



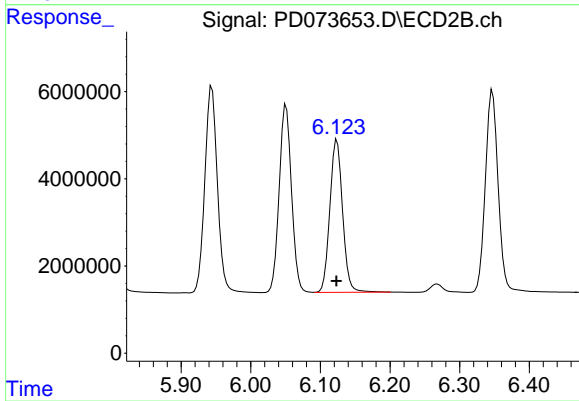
#17 4,4'-DDT

R.T.: 6.051 min
 Delta R.T.: 0.000 min
 Response: 52888987
 Conc: 51.35 ng/ml



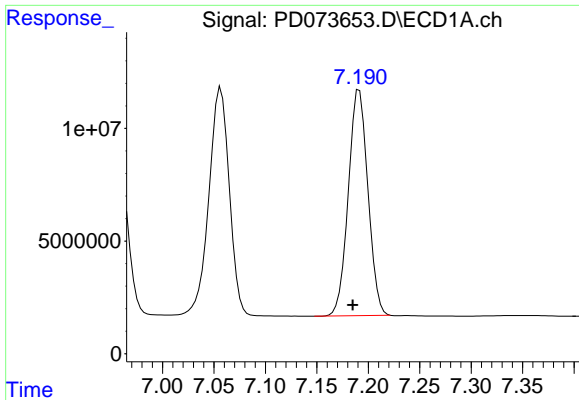
#18 Endrin aldehyde

R.T.: 6.957 min
 Delta R.T.: 0.007 min
 Response: 106593308
 Conc: 49.14 ng/ml



#18 Endrin aldehyde

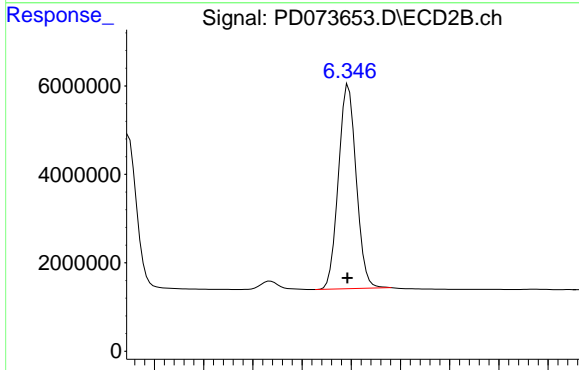
R.T.: 6.124 min
 Delta R.T.: 0.000 min
 Response: 44444054
 Conc: 50.39 ng/ml



#19 Endosulfan Sulfate

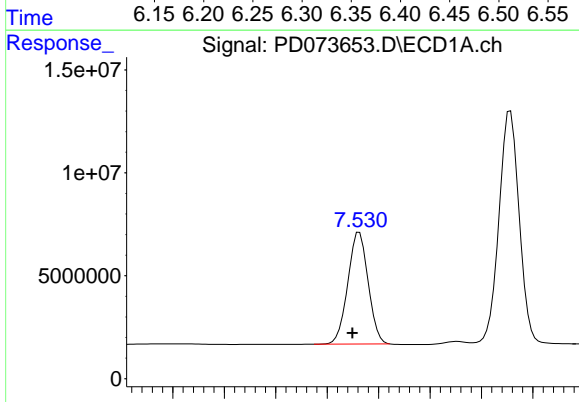
R.T.: 7.191 min
 Delta R.T.: 0.006 min
 Response: 132982734
 Conc: 49.67 ng/ml

Instrument :
 ECD_D
 ClientSampleId :



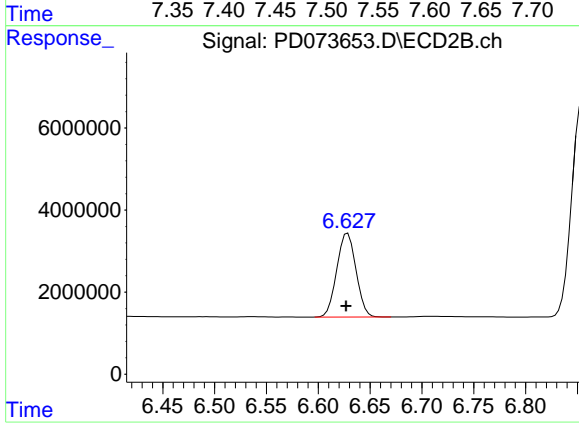
#19 Endosulfan Sulfate

R.T.: 6.347 min
 Delta R.T.: 0.001 min
 Response: 58018976
 Conc: 51.54 ng/ml



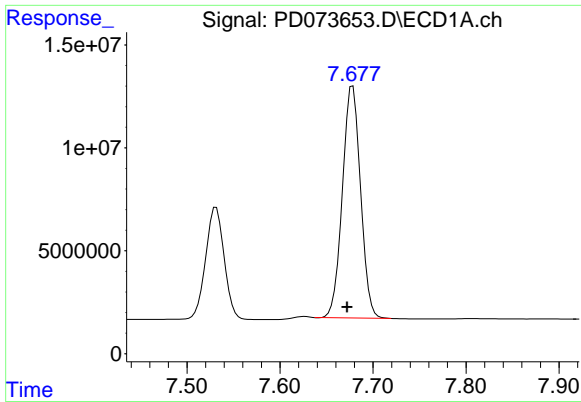
#20 Methoxychlor

R.T.: 7.531 min
 Delta R.T.: 0.007 min
 Response: 74561715
 Conc: 48.13 ng/ml



#20 Methoxychlor

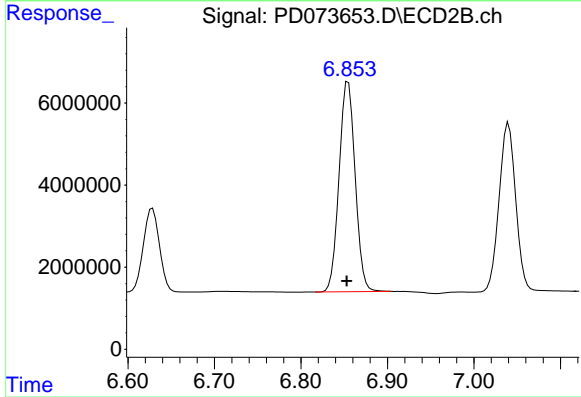
R.T.: 6.628 min
 Delta R.T.: 0.002 min
 Response: 26408992
 Conc: 50.46 ng/ml



#21 Endrin ketone

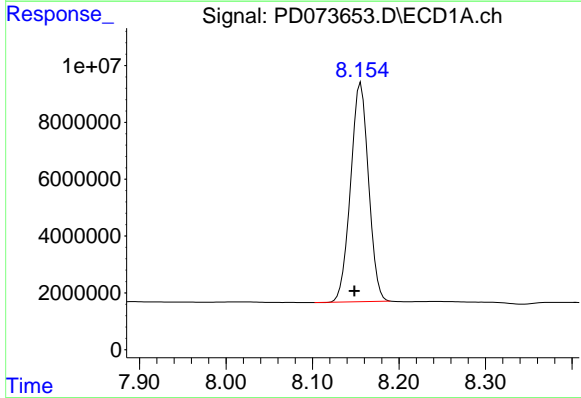
R.T.: 7.678 min
 Delta R.T.: 0.006 min
 Response: 152853715
 Conc: 50.55 ng/ml

Instrument :
 ECD_D
 ClientSampleId :



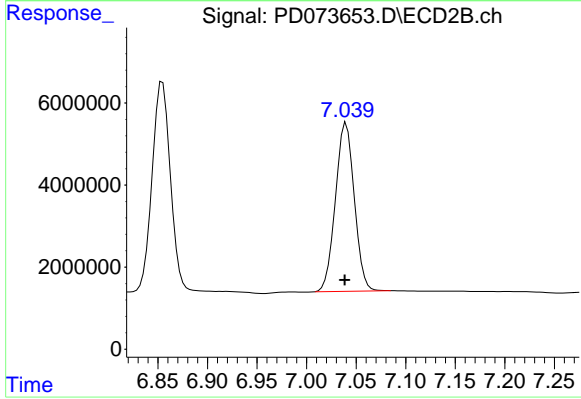
#21 Endrin ketone

R.T.: 6.855 min
 Delta R.T.: 0.002 min
 Response: 65814341
 Conc: 51.37 ng/ml



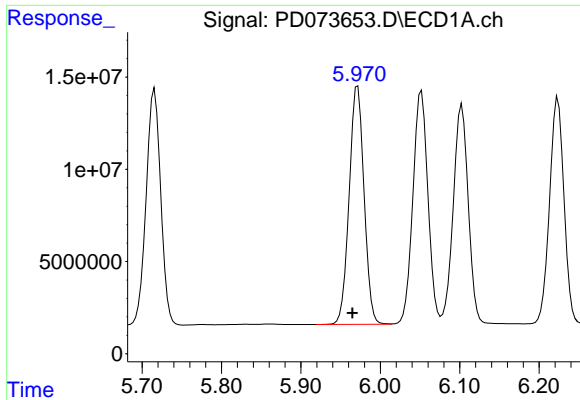
#22 Mirex

R.T.: 8.156 min
 Delta R.T.: 0.007 min
 Response: 110821552
 Conc: 48.23 ng/ml



#22 Mirex

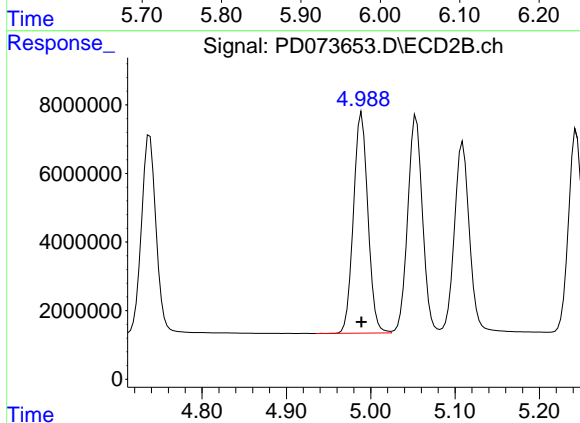
R.T.: 7.040 min
 Delta R.T.: 0.001 min
 Response: 54480236
 Conc: 51.87 ng/ml



#25 Chlordane-3

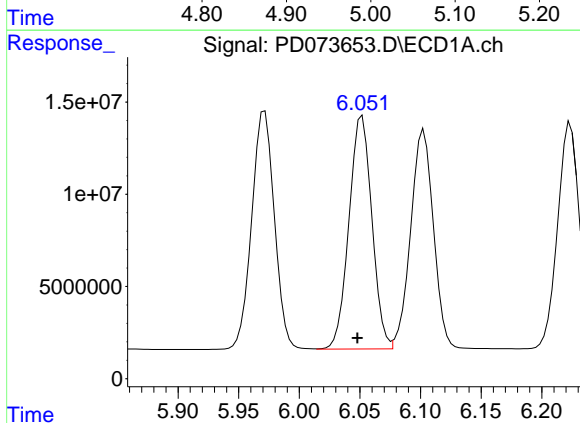
R.T.: 5.972 min
 Delta R.T.: 0.007 min
 Response: 168185472
 Conc: 359.22 ng/ml

Instrument :
 ECD_D
 ClientSampleId :



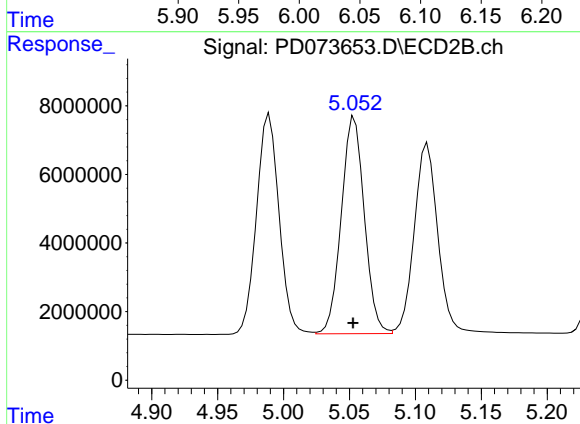
#25 Chlordane-3

R.T.: 4.989 min
 Delta R.T.: 0.000 min
 Response: 76519909
 Conc: 530.05 ng/ml



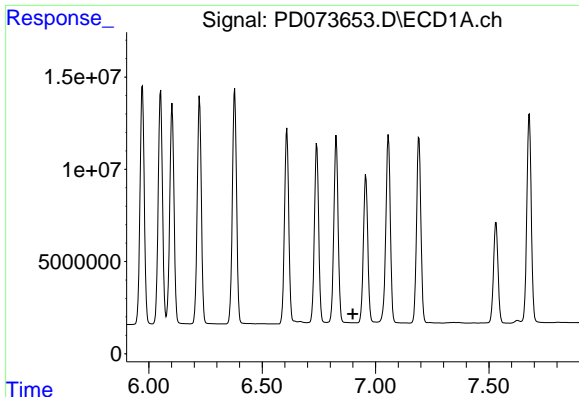
#26 Chlordane-4

R.T.: 6.052 min
 Delta R.T.: 0.004 min
 Response: 166307333
 Conc: 290.53 ng/ml



#26 Chlordane-4

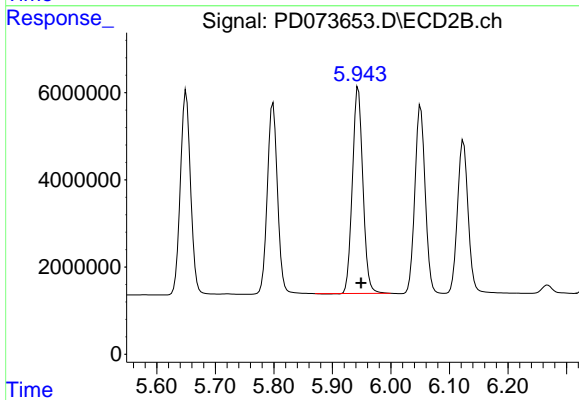
R.T.: 5.054 min
 Delta R.T.: 0.001 min
 Response: 76876134
 Conc: 551.51 ng/ml



#27 Chlordane-5

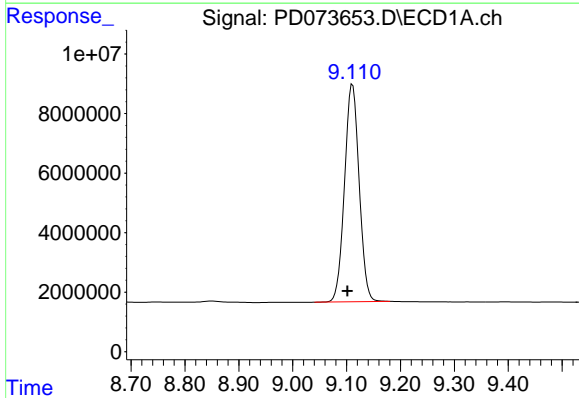
R.T.: 0.000 min
 Exp R.T.: 6.900 min
 Response: 0
 Conc: N.D.

Instrument :
 ECD_D
 ClientSampleId :



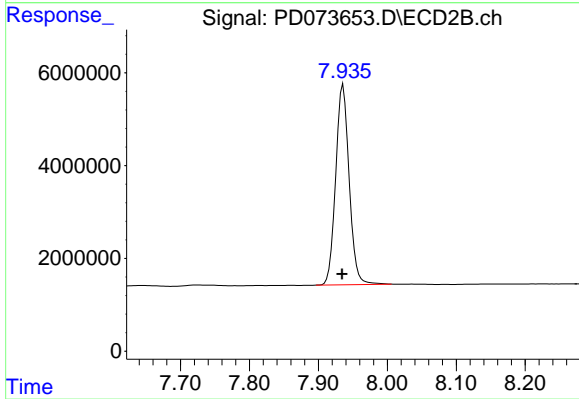
#27 Chlordane-5

R.T.: 5.944 min
 Delta R.T.: -0.005 min
 Response: 58792831
 Conc: 1170.00 ng/ml



#28 Decachlorobiphenyl

R.T.: 9.111 min
 Delta R.T.: 0.009 min
 Response: 137888497
 Conc: 48.93 ng/ml



#28 Decachlorobiphenyl

R.T.: 7.936 min
 Delta R.T.: 0.001 min
 Response: 58622890
 Conc: 50.39 ng/ml