

Data Path : Z:\pestpcbsrv\HPCHEM1\ECD_D\Data\PD012025\
 Data File : PD087435.D
 Signal(s) : Signal #1: ECD1A.ch Signal #2: ECD2B.ch
 Acq On : 20 Jan 2025 09:00
 Operator : AR\AJ
 Sample : HEXANE
 Misc :
 ALS Vial : 1 Sample Multiplier: 1

Integration File signal 1: autoint1.e
 Integration File signal 2: autoint2.e
 Quant Time: Jan 20 22:41:04 2025
 Quant Method : Z:\pestpcbsrv\HPCHEM1\ECD_D\Method\PD011625CLP.M
 Quant Title : GC Extractables
 QLast Update : Thu Jan 16 13:39:07 2025
 Response via : Initial Calibration
 Integrator: ChemStation

Volume Inj. : 1 µl
 Signal #1 Phase : ZB-MR1 Signal #2 Phase: ZB-MR2
 Signal #1 Info : 30M x 0.32mm x0.5 Signal #2 Info : 30M x 0.32mm x 0.25µm

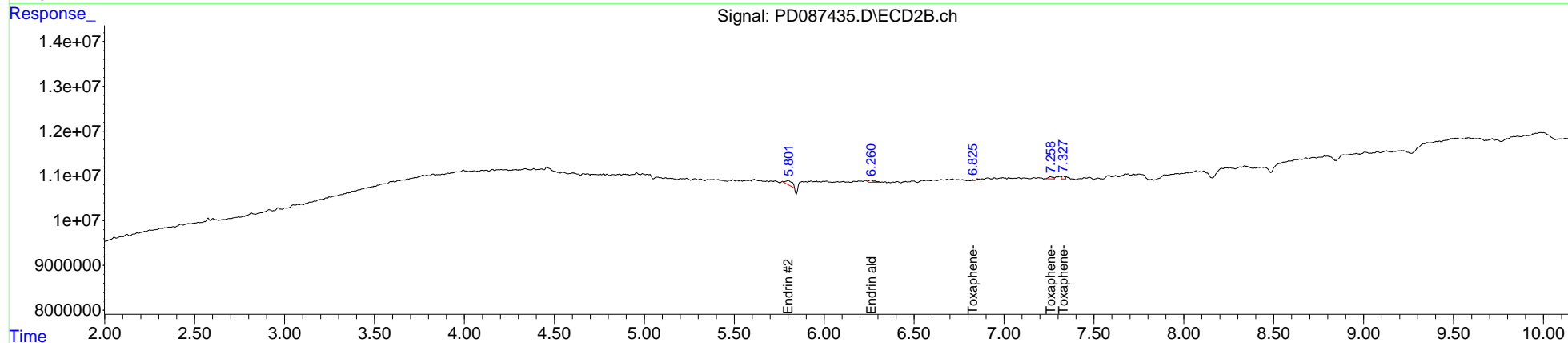
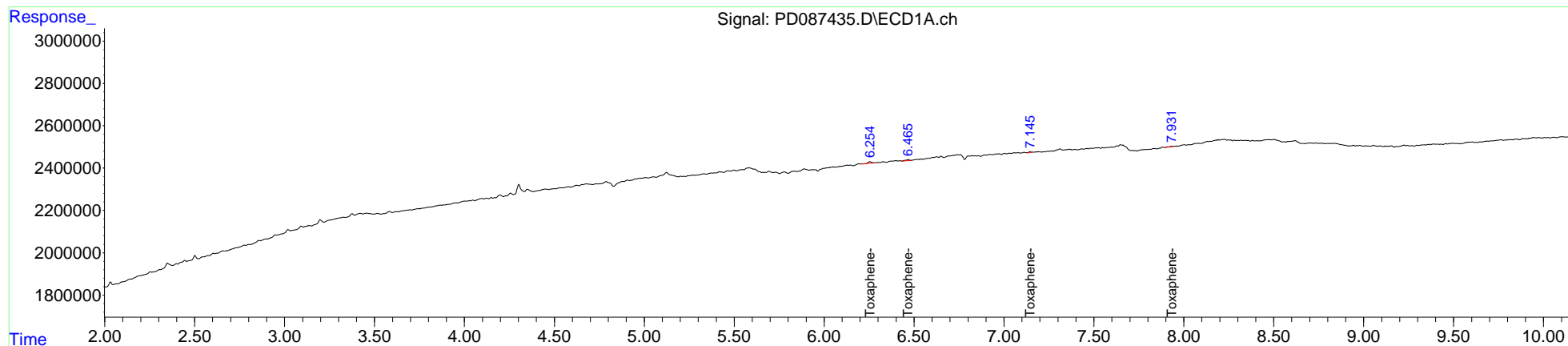
| Compound | RT#1 | RT#2 | Resp#1 | Resp#2 | ng/ml | ng/ml |
|-----------------------------|--------|--------|--------|---------|-------|---------|
| ----- | | | | | | |
| System Monitoring Compounds | | | | | | |
| 1) SA Tetrachlo... | 0.000 | 2.916f | 0 | 583752 | N.D. | <MDL |
| 2) SA Decachlor... | 9.057 | 8.068 | 26997 | 478775 | <MDL | <MDL # |
| Target Compounds | | | | | | |
| 2) A alpha-BHC | 0.000 | 3.390 | 0 | 119274 | N.D. | <MDL |
| 4) MA Heptachlor | 4.909f | 4.099 | 32789 | 262495 | <MDL | <MDL # |
| 5) MB Aldrin | 0.000 | 4.387 | 0 | 222463 | N.D. | <MDL |
| 6) B beta-BHC | 4.533 | 4.033 | 19330 | 76457 | <MDL | <MDL # |
| 7) B delta-BHC | 4.788 | 0.000 | 313897 | 0 | <MDL | N.D. # |
| 8) B Heptachlo... | 5.693 | 0.000 | 89988 | 0 | <MDL | N.D. # |
| 9) A Endosulfan I | 6.129f | 5.284 | -23735 | 280240 | N.D. | <MDL |
| 10) B trans-Chl... | 5.891f | 5.069f | 203160 | 951827 | <MDL | <MDL # |
| 12) B 4,4'-DDE | 6.193 | 0.000 | 30697 | 0 | <MDL | N.D. # |
| 13) MA Dieldrin | 6.327 | 0.000 | 43923 | 0 | <MDL | N.D. # |
| 14) MA Endrin | 6.627f | 5.800 | 27753 | 2485062 | <MDL | 0.166 # |
| 16) A 4,4'-DDD | 6.717 | 0.000 | 54424 | 0 | <MDL | N.D. # |
| 17) MA 4,4'-DDT | 7.007 | 6.229f | 14929 | 491103 | <MDL | <MDL # |
| 18) B Endrin al... | 6.920 | 6.261 | 33262 | 1169383 | <MDL | 0.101 # |
| 19) B Endosulfa... | 7.147 | 0.000 | 28364 | 0 | <MDL | N.D. # |
| 20) A Methoxychlor | 7.482 | 6.827f | 15321 | 156412 | <MDL | <MDL # |
| 21) B Endrin ke... | 7.629 | 7.027 | -1891 | 157157 | N.D. | <MDL |
| 22) Toxaphene-1 | 6.256 | 0.000 | 106054 | 0 | 4.642 | N.D. # |
| 23) Toxaphene-2 | 6.467 | 0.000 | 71689 | 0 | 2.227 | N.D. # |
| 24) Toxaphene-3 | 7.059 | 6.827f | 7797 | 156412 | <MDL | 0.525 # |
| 25) Toxaphene-4 | 7.147 | 7.260f | 28364 | 849643 | 0.434 | 4.011 # |
| 26) Toxaphene-5 | 7.932 | 7.329 | 30009 | 799279 | 0.618 | 5.154 # |

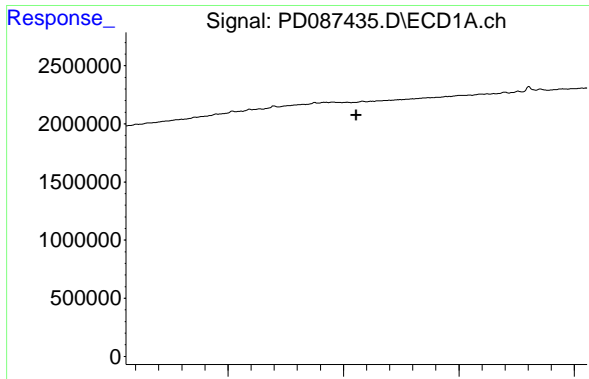
(f)=RT Delta > 1/2 Window (#)=Amounts differ by > 25% (m)=manual int.

Data Path : Z:\pestpcbsrv\HPCHEM1\ECD_D\Data\PD012025\
 Data File : PD087435.D
 Signal(s) : Signal #1: ECD1A.ch Signal #2: ECD2B.ch
 Acq On : 20 Jan 2025 09:00
 Operator : AR\AJ
 Sample : HEXANE
 Misc :
 ALS Vial : 1 Sample Multiplier: 1

Integration File signal 1: autoint1.e
 Integration File signal 2: autoint2.e
 Quant Time: Jan 20 22:41:04 2025
 Quant Method : Z:\pestpcbsrv\HPCHEM1\ECD_D\Method\PD011625CLP.M
 Quant Title : GC Extractables
 QLast Update : Thu Jan 16 13:39:07 2025
 Response via : Initial Calibration
 Integrator: ChemStation

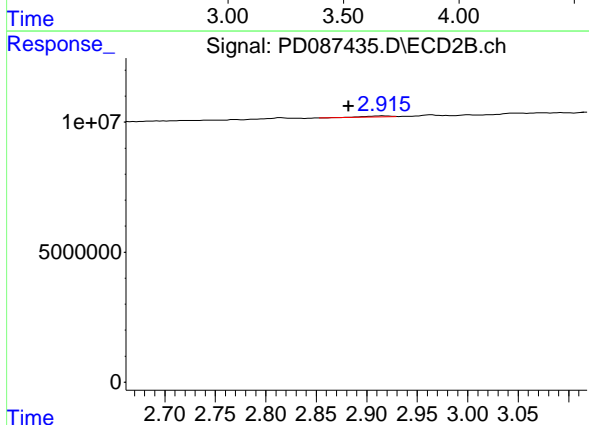
Volume Inj. : 1 µl
 Signal #1 Phase : ZB-MR1 Signal #2 Phase: ZB-MR2
 Signal #1 Info : 30M x 0.32mm x 0.5 Signal #2 Info : 30M x 0.32mm x 0.25µm





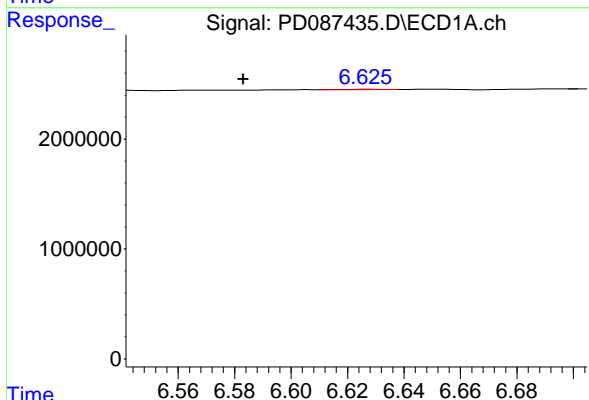
#1 Tetrachloro-m-xylene

R.T.: 0.000 min
 Exp R.T. : 3.555 min
 Response: 0
 Conc: N.D.



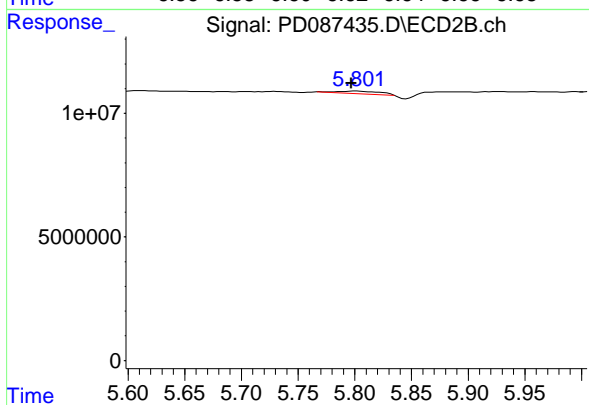
#1 Tetrachloro-m-xylene

R.T.: 2.916 min
 Delta R.T.: 0.034 min
 Response: 583752
 Conc: N.D.



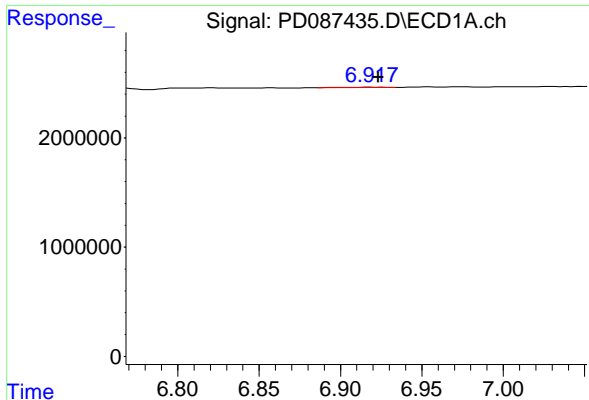
#14 Endrin

R.T.: 6.627 min
 Delta R.T.: 0.044 min
 Response: 27753
 Conc: N.D.



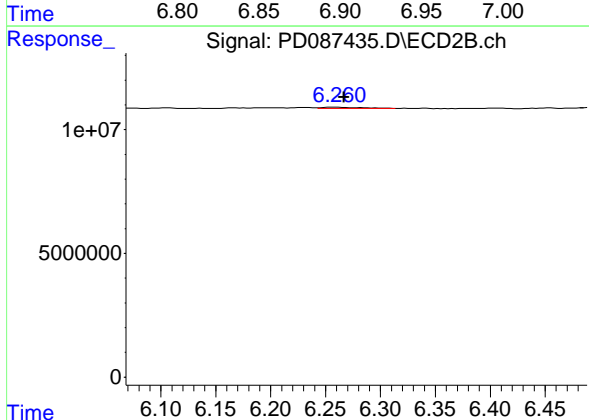
#14 Endrin

R.T.: 5.800 min
 Delta R.T.: 0.003 min
 Response: 2485062
 Conc: 0.17 ng/ml



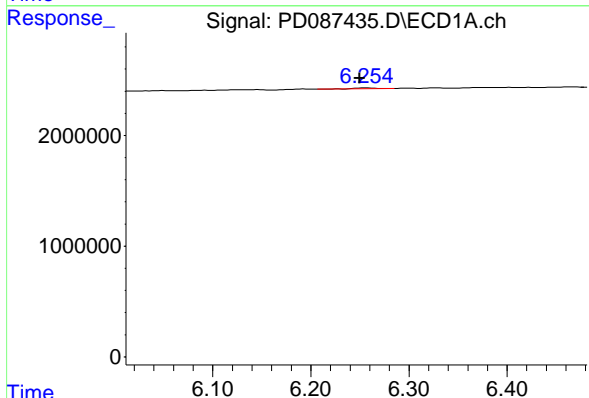
#18 Endrin aldehyde

R.T.: 6.920 min
 Delta R.T.: -0.003 min
 Response: 33262
 Conc: N.D.



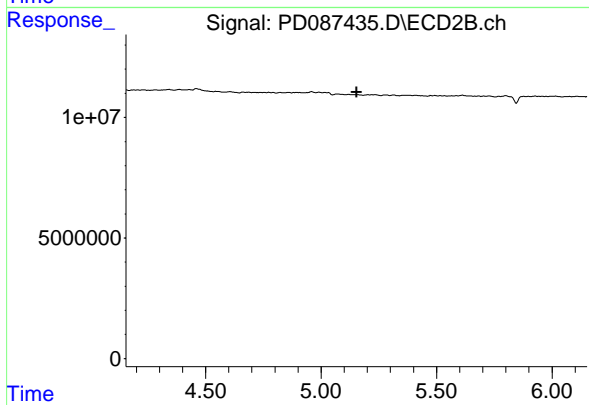
#18 Endrin aldehyde

R.T.: 6.261 min
 Delta R.T.: -0.006 min
 Response: 1169383
 Conc: 0.10 ng/ml



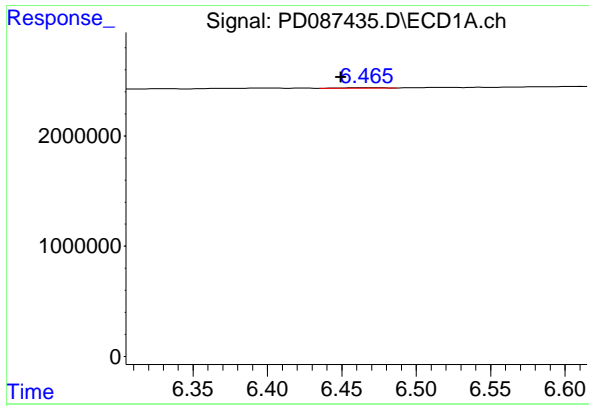
#22 Toxaphene-1

R.T.: 6.256 min
 Delta R.T.: 0.006 min
 Response: 106054
 Conc: 4.64 ng/ml

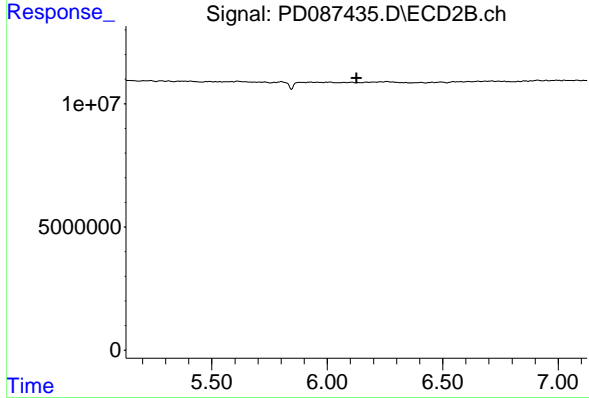


#22 Toxaphene-1

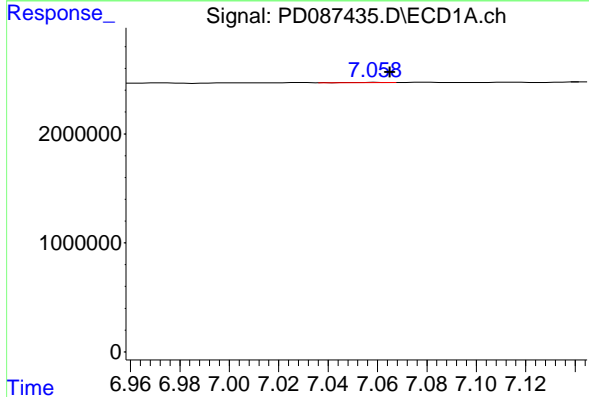
R.T.: 0.000 min
 Exp R.T.: 5.154 min
 Response: 0
 Conc: N.D.



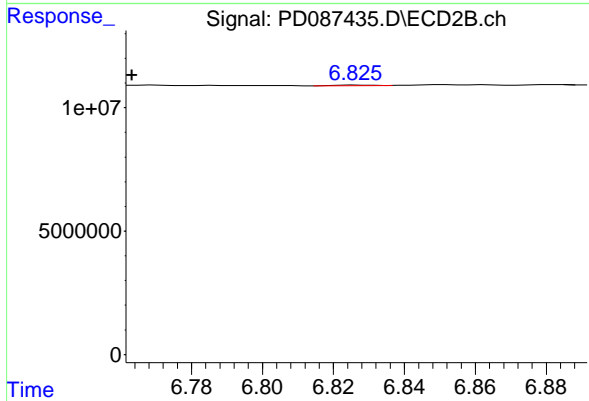
#23 Toxaphene-2
 R.T.: 6.467 min
 Delta R.T.: 0.018 min
 Response: 71689
 Conc: 2.23 ng/ml



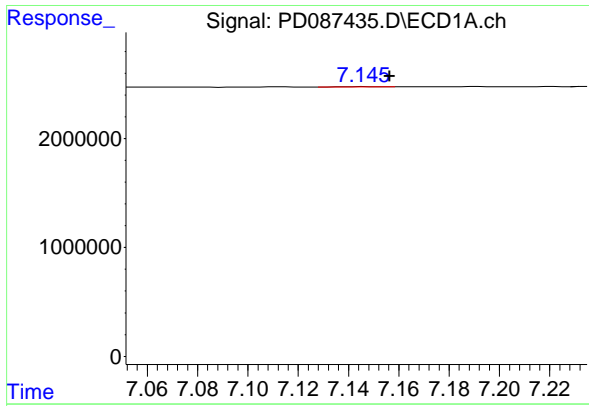
#23 Toxaphene-2
 R.T.: 0.000 min
 Exp R.T.: 6.126 min
 Response: 0
 Conc: N.D.



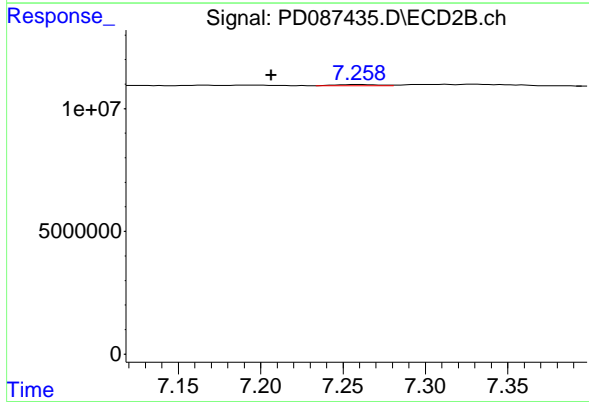
#24 Toxaphene-3
 R.T.: 7.059 min
 Delta R.T.: -0.006 min
 Response: 7797
 Conc: N.D.



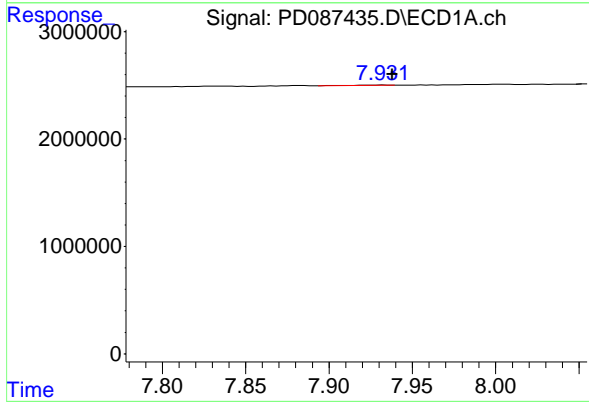
#24 Toxaphene-3
 R.T.: 6.827 min
 Delta R.T.: 0.064 min
 Response: 156412
 Conc: 0.53 ng/ml



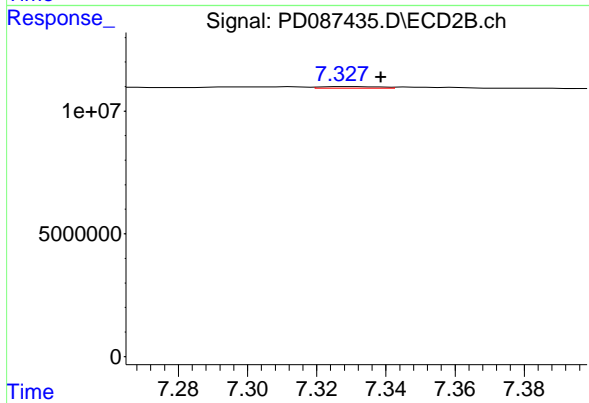
#25 Toxaphene-4
 R.T.: 7.147 min
 Delta R.T.: -0.010 min
 Response: 28364
 Conc: 0.43 ng/ml



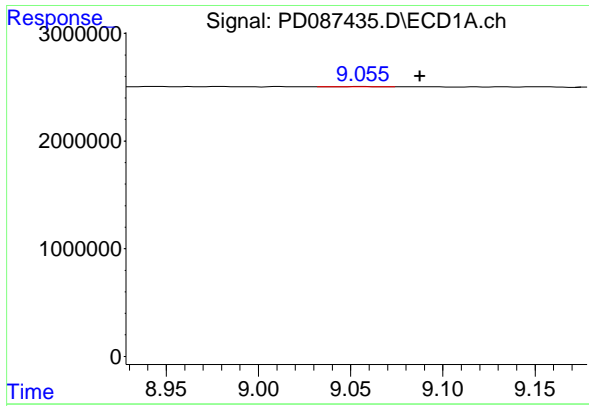
#25 Toxaphene-4
 R.T.: 7.260 min
 Delta R.T.: 0.053 min
 Response: 849643
 Conc: 4.01 ng/ml



#26 Toxaphene-5
 R.T.: 7.932 min
 Delta R.T.: -0.006 min
 Response: 30009
 Conc: 0.62 ng/ml

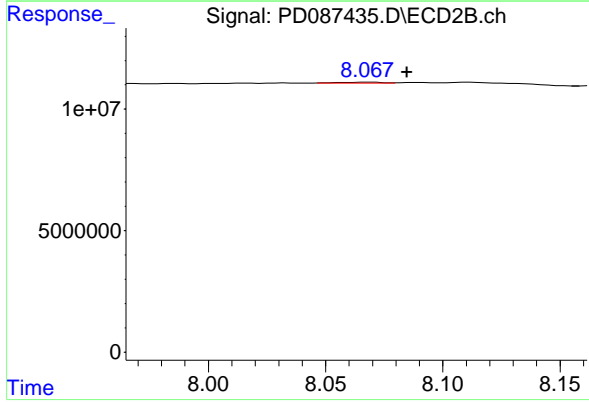


#26 Toxaphene-5
 R.T.: 7.329 min
 Delta R.T.: -0.010 min
 Response: 799279
 Conc: 5.15 ng/ml



#27 Decachlorobiphenyl

R.T.: 9.057 min
Delta R.T.: -0.031 min
Response: 26997
Conc: N.D.



#27 Decachlorobiphenyl

R.T.: 8.068 min
Delta R.T.: -0.017 min
Response: 478775
Conc: N.D.