

Data Path : Z:\pestpcbsrv\HPCHEM1\ECD_D\Data\PD012120\
 Data File : PD057035.D
 Signal(s) : Signal #1: ECD1A.ch Signal #2: ECD2B.ch
 Acq On : 21 Jan 2020 09:15
 Operator : AJ\MA
 Sample : L1161-09
 Misc : TOX MDL 50 PPB
 ALS Vial : 15 Sample Multiplier: 1

Instrument :
 ECD_D
ClientSampleId :
 MDL-WATER-03-QT1-2020

Integration File signal 1: autoint1.e
 Integration File signal 2: autoint2.e
 Quant Time: Jan 21 09:48:39 2020
 Quant Method : Z:\pestpcbsrv\HPCHEM1\ECD_D\Method\DTX011820.M
 Quant Title : GC Extractables
 QLast Update : Mon Jan 20 06:13:56 2020
 Response via : Initial Calibration
 Integrator: ChemStation

Volume Inj. : 1 µl
 Signal #1 Phase : ZB-MR2 Signal #2 Phase: ZB-MR1
 Signal #1 Info : 30M x 0.32mm x0.2 Signal #2 Info : 30M x 0.32mm x 0.50µm

Compound	RT#1	RT#2	Resp#1	Resp#2	ng/ml	ng/ml

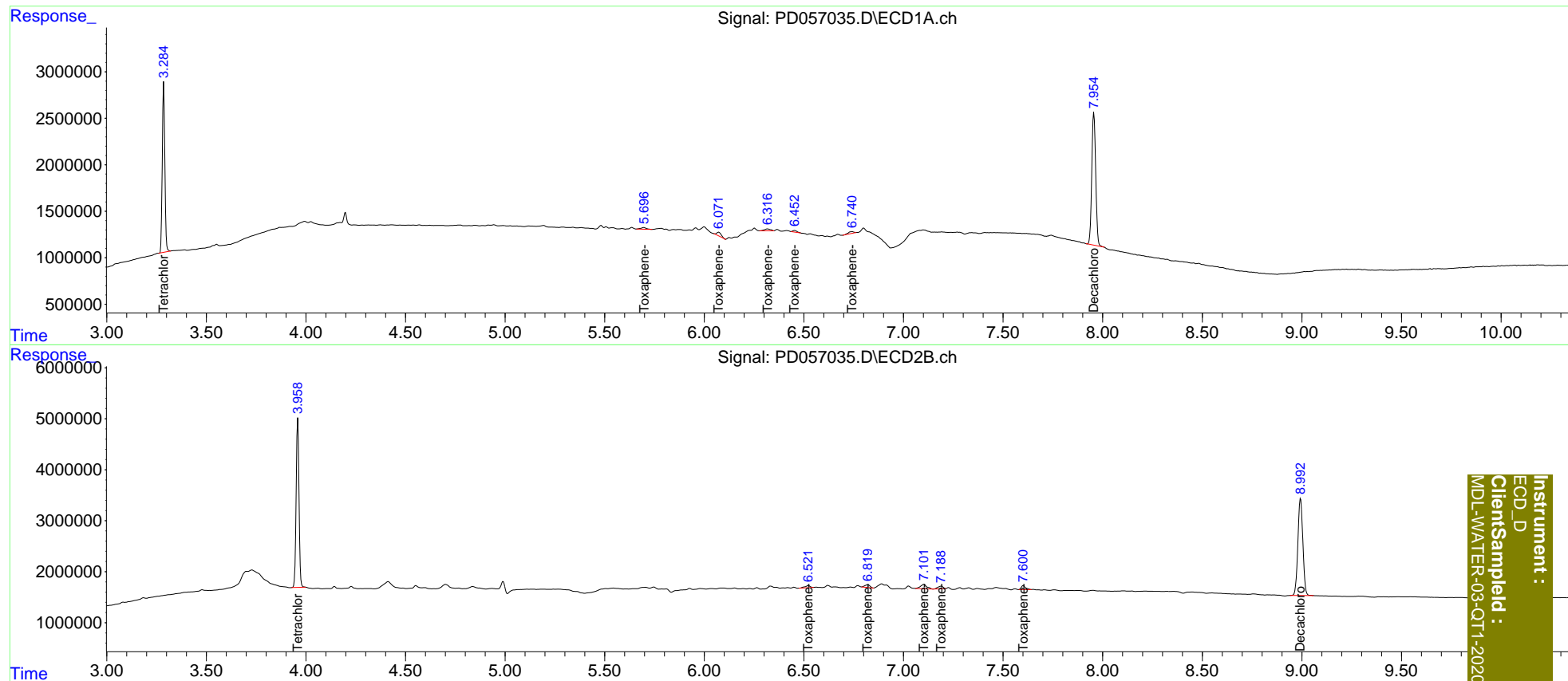
System Monitoring Compounds						
1) SA Tetrachlo...	3.286	3.959	16155184	33012322	19.667	20.295
7) SA Decachlor...	7.956	8.994	19450673	32979766	19.966	19.895
Target Compounds						
2) Toxaphene-1	5.697	6.522	353968	763583	35.148	47.515 #
3) Toxaphene-2	6.072	6.820	644233	945892	41.938	46.535
4) Toxaphene-3	6.318	7.102	434461	1859444	28.796	42.077 #
5) Toxaphene-4	6.453	7.189	227343	939455	34.176	34.727
6) Toxaphene-5	6.742	7.601	394437	1149126	59.377	42.247 #

(f)=RT Delta > 1/2 Window (#)=Amounts differ by > 25% (m)=manual int.

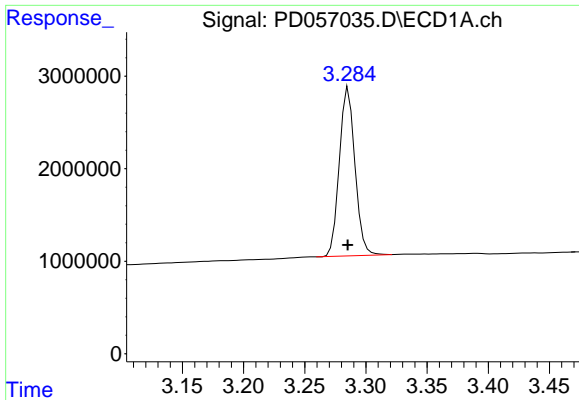
Data Path : Z:\pestpcbsrv\HPCHEM1\ECD_D\Data\PD012120\
 Data File : PD057035.D
 Signal(s) : Signal #1: ECD1A.ch Signal #2: ECD2B.ch
 Acq On : 21 Jan 2020 09:15
 Operator : AJ\MA
 Sample : L1161-09
 Misc : TOX MDL 50 PPB
 ALS Vial : 15 Sample Multiplier: 1

Integration File signal 1: autoint1.e
 Integration File signal 2: autoint2.e
 Quant Time: Jan 21 09:48:39 2020
 Quant Method : Z:\pestpcbsrv\HPCHEM1\ECD_D\Method\DTX011820.M
 Quant Title : GC Extractables
 QLast Update : Mon Jan 20 06:13:56 2020
 Response via : Initial Calibration
 Integrator: ChemStation

Volume Inj. : 1 µl
 Signal #1 Phase : ZB-MR2 Signal #2 Phase: ZB-MR1
 Signal #1 Info : 30M x 0.32mm x0.2 Signal #2 Info : 30M x 0.32mm x 0.50µm

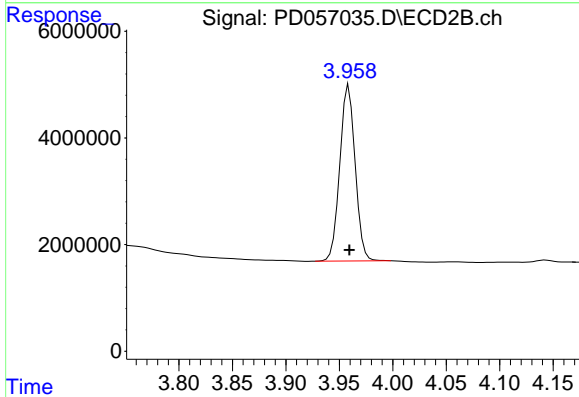


Instrument :
 ECD_D
 ClientSampleId :
 MDL-WATER-03-QT1-2020

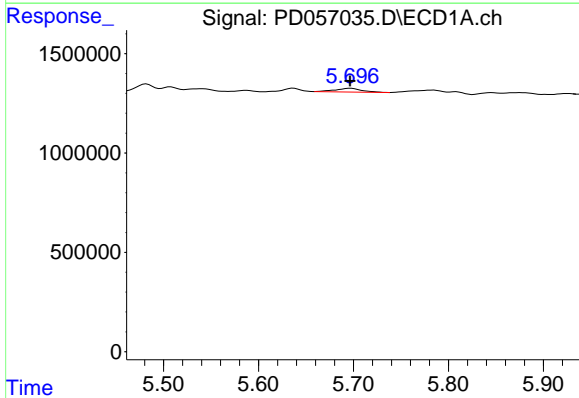


#1 Tetrachloro-m-xylene
 R.T.: 3.286 min
 Delta R.T.: 0.000 min
 Response: 16155184
 Conc: 19.67 ng/ml

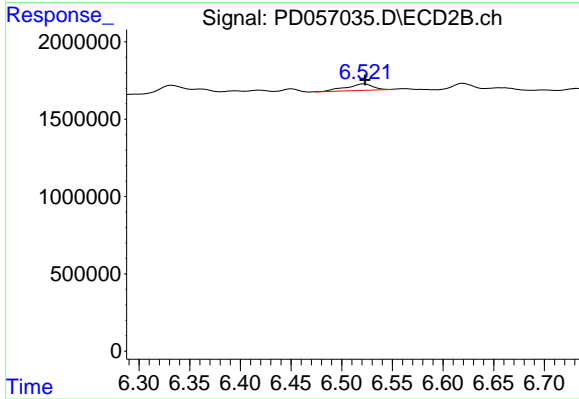
Instrument :
 ECD_D
ClientSampled :
 MDL-WATER-03-QT1-2020



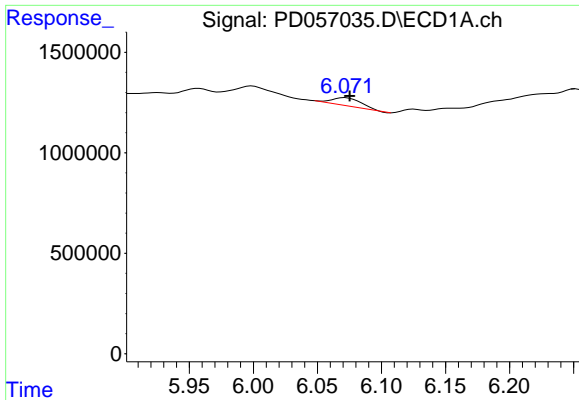
#1 Tetrachloro-m-xylene
 R.T.: 3.959 min
 Delta R.T.: 0.000 min
 Response: 33012322
 Conc: 20.29 ng/ml



#2 Toxaphene-1
 R.T.: 5.697 min
 Delta R.T.: 0.000 min
 Response: 353968
 Conc: 35.15 ng/ml



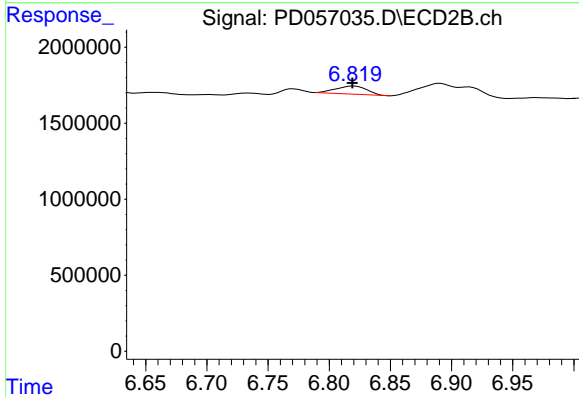
#2 Toxaphene-1
 R.T.: 6.522 min
 Delta R.T.: 0.000 min
 Response: 763583
 Conc: 47.51 ng/ml



#3 Toxaphene-2

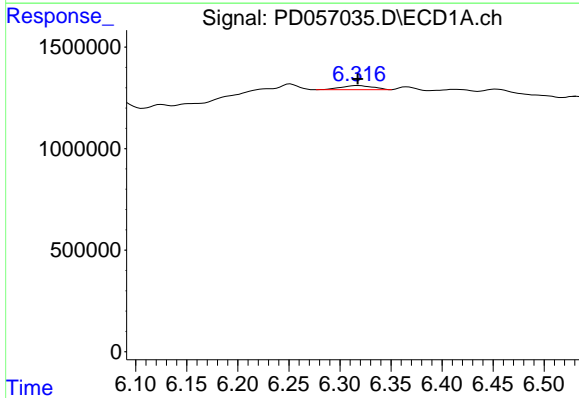
R.T.: 6.072 min
 Delta R.T.: -0.003 min
 Response: 644233
 Conc: 41.94 ng/ml

Instrument :
 ECD_D
 ClientSampleId :
 MDL-WATER-03-QT1-2020



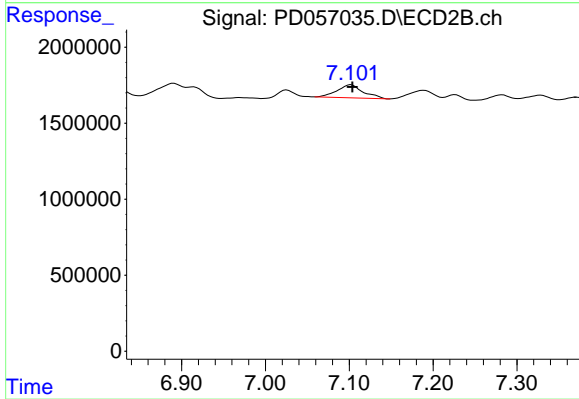
#3 Toxaphene-2

R.T.: 6.820 min
 Delta R.T.: 0.001 min
 Response: 945892
 Conc: 46.53 ng/ml



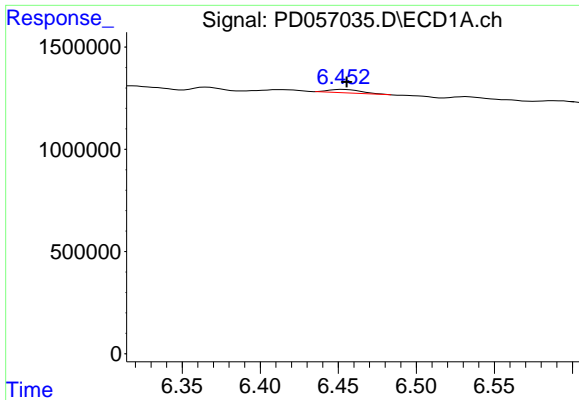
#4 Toxaphene-3

R.T.: 6.318 min
 Delta R.T.: 0.000 min
 Response: 434461
 Conc: 28.80 ng/ml



#4 Toxaphene-3

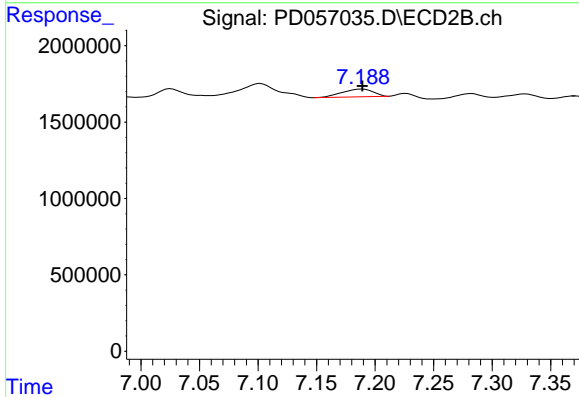
R.T.: 7.102 min
 Delta R.T.: -0.002 min
 Response: 1859444
 Conc: 42.08 ng/ml



#5 Toxaphene-4

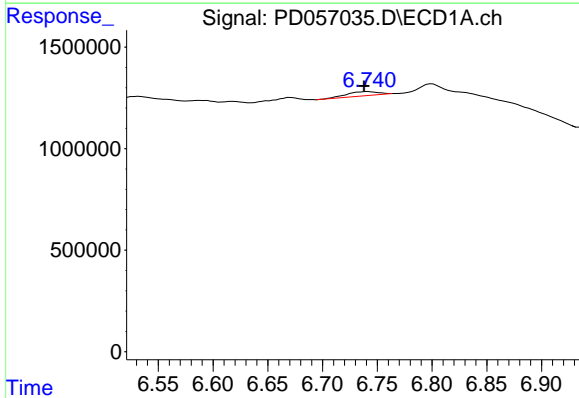
R.T.: 6.453 min
Delta R.T.: -0.002 min
Response: 227343
Conc: 34.18 ng/ml

Instrument :
ECD_D
ClientSampleId :
MDL-WATER-03-QT1-2020



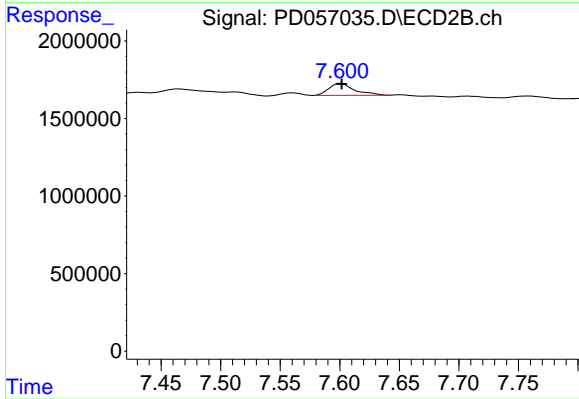
#5 Toxaphene-4

R.T.: 7.189 min
Delta R.T.: 0.000 min
Response: 939455
Conc: 34.73 ng/ml



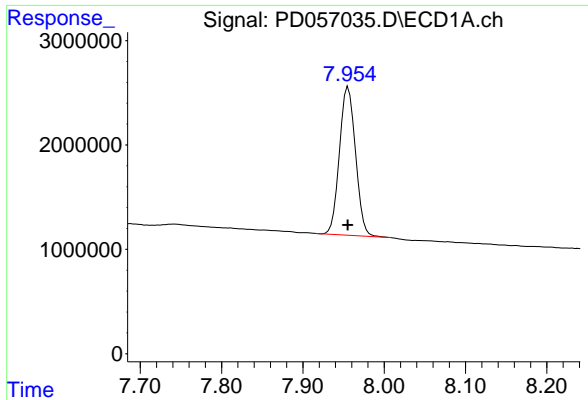
#6 Toxaphene-5

R.T.: 6.742 min
Delta R.T.: 0.004 min
Response: 394437
Conc: 59.38 ng/ml



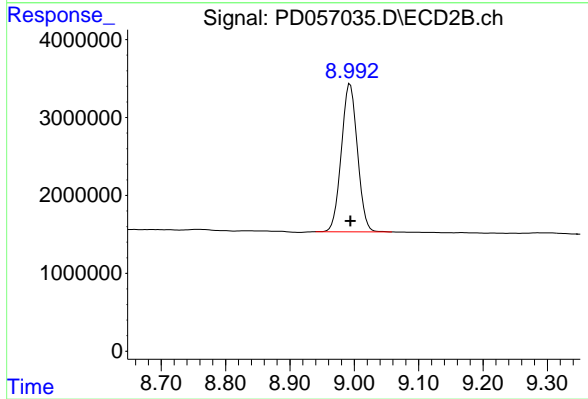
#6 Toxaphene-5

R.T.: 7.601 min
Delta R.T.: 0.000 min
Response: 1149126
Conc: 42.25 ng/ml



#7 Decachlorobiphenyl
R.T.: 7.956 min
Delta R.T.: 0.000 min
Response: 19450673
Conc: 19.97 ng/ml

Instrument :
ECD_D
ClientSampleId :
MDL-WATER-03-QT1-2020



#7 Decachlorobiphenyl
R.T.: 8.994 min
Delta R.T.: 0.000 min
Response: 32979766
Conc: 19.90 ng/ml