

Data Path : Z:\pestpcbsrv\HPCHEM1\ECD\_D\Data\PD012122\  
 Data File : PD067749.D  
 Signal(s) : Signal #1: ECD1A.ch Signal #2: ECD2B.ch  
 Acq On : 21 Jan 2022 10:26  
 Operator : AR\AJ  
 Sample : PB142149BSD  
 Misc :  
 ALS Vial : 7 Sample Multiplier: 1

Instrument :  
 ECD\_D  
 ClientSampleId :

Integration File signal 1: autoint1.e  
 Integration File signal 2: autoint2.e  
 Quant Time: Jan 23 23:55:13 2022  
 Quant Method : Z:\pestpcbsrv\HPCHEM1\ECD\_L\methods\PD122821.M  
 Quant Title : GC Extractables  
 QLast Update : Tue Dec 28 03:00:50 2021  
 Response via : Initial Calibration  
 Integrator: ChemStation

Volume Inj. : 1 µl  
 Signal #1 Phase : ZB-MR2 Signal #2 Phase: ZB-MR1  
 Signal #1 Info : 30M x 0.32mm x0.2 Signal #2 Info : 30M x 0.32mm x0.5µm

Compound	RT#1	RT#2	Resp#1	Resp#2	ng/ml	ng/ml
-----						
System Monitoring Compounds						
1) SA Tetrachlo...	3.434	3.959	35200251	131.5E6	19.370	19.931
28) SA Decachlor...	8.154	9.010	17455312	83990195	19.650	17.673
Target Compounds						
2) A alpha-BHC	3.870	4.352	32317660	116.1E6	11.206	12.513
3) MA gamma-BHC...	4.152	4.637	30374099	105.4E6	11.420	12.506
4) MA Heptachlor	4.445	5.136	31090918	93625440	11.433	12.204
5) MB Aldrin	4.689	5.439	32038619	86904369	11.575	11.720
6) B beta-BHC	4.401	4.816	13633742	50618269	12.406	12.981
7) B delta-BHC	4.603	5.030	28188100	90897536	10.924	12.129
8) B Heptachlo...	5.130	5.828	37709902	95919858	15.303	17.970
9) A Endosulfan I	5.466	6.185	33130910	73519889	14.891	12.144
10) B gamma-Chl...	5.354	6.062	33678472	77607483	13.623	11.963
11) B alpha-Chl...	5.412	6.133	32589827	77912892	13.479	12.019
12) B 4,4'-DDE	5.575	6.294	29622266	72956091	13.380	11.844
13) MA Dieldrin	5.707	6.443	28388296	78532074	11.758	11.822
14) MA Endrin	5.964	6.661	27437671	63954168	13.062	11.536
15) B Endosulfa...	6.237	6.877	24402766	65469203	12.169	11.015
16) A 4,4'-DDD	6.089	6.789	21394572	59371648	12.453	11.860
17) MA 4,4'-DDT	6.327	7.086	19119790	58809917	11.701	10.991
18) B Endrin al...	6.405	7.002	17722110	49798621	11.662	11.038
19) B Endosulfa...	6.617	7.224	20279659	61659301	12.561	11.282
20) A Methoxychlor	6.874	7.548	11209568	33735711	13.205	11.627
21) B Endrin ke...	7.108	7.697	21517696	69302185	12.573	11.044
22) Mirex	7.287	8.143	16036501	50292600	13.407	11.582
23) Chlordane-1	4.298	4.949	159119	87946	2.015	0.329 #
24) Chlordane-2	0.000	5.439f	0	86904369	N.D.	316.721 #
25) Chlordane-3	5.354	6.062	33678472	77607483	126.311	80.572 #
26) Chlordane-4	5.412	6.133	32589827	77912892	148.102	68.243 #
27) Chlordane-5	6.237	0.000	24402766	0	281.881	N.D. #

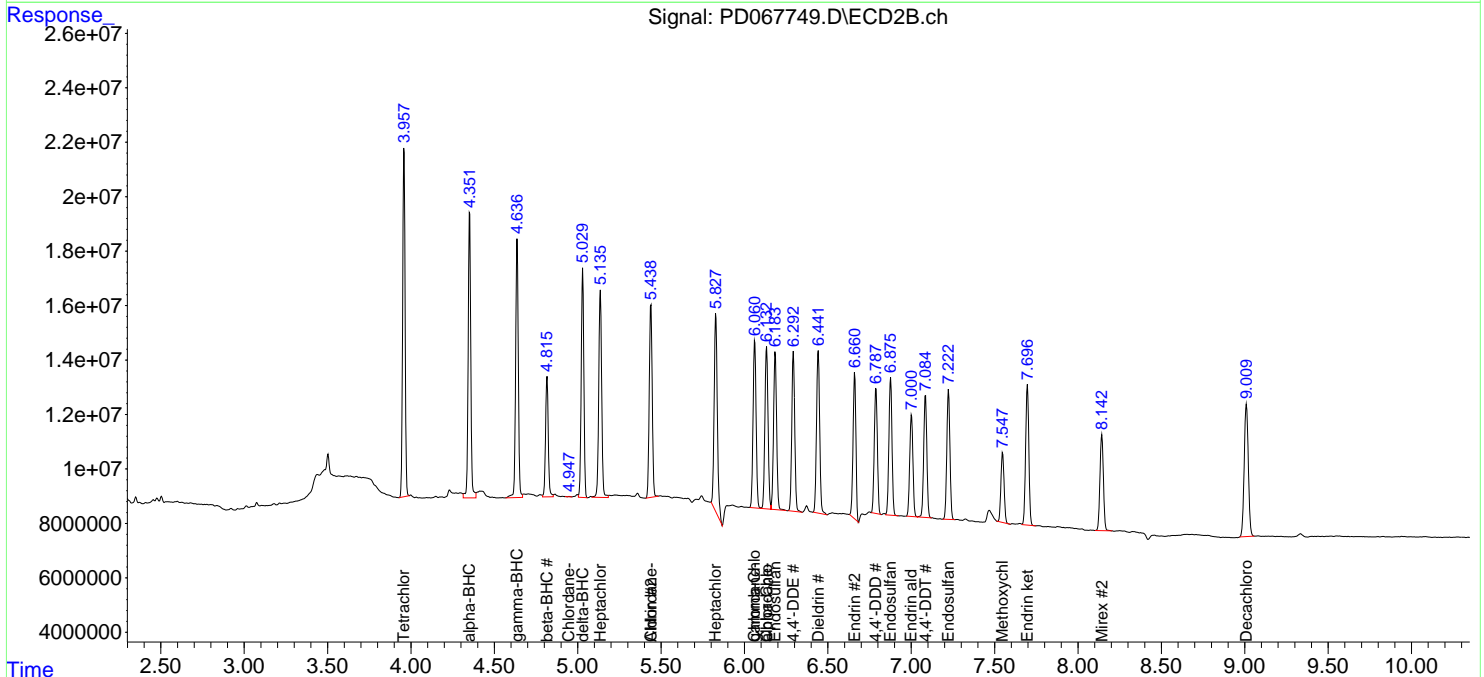
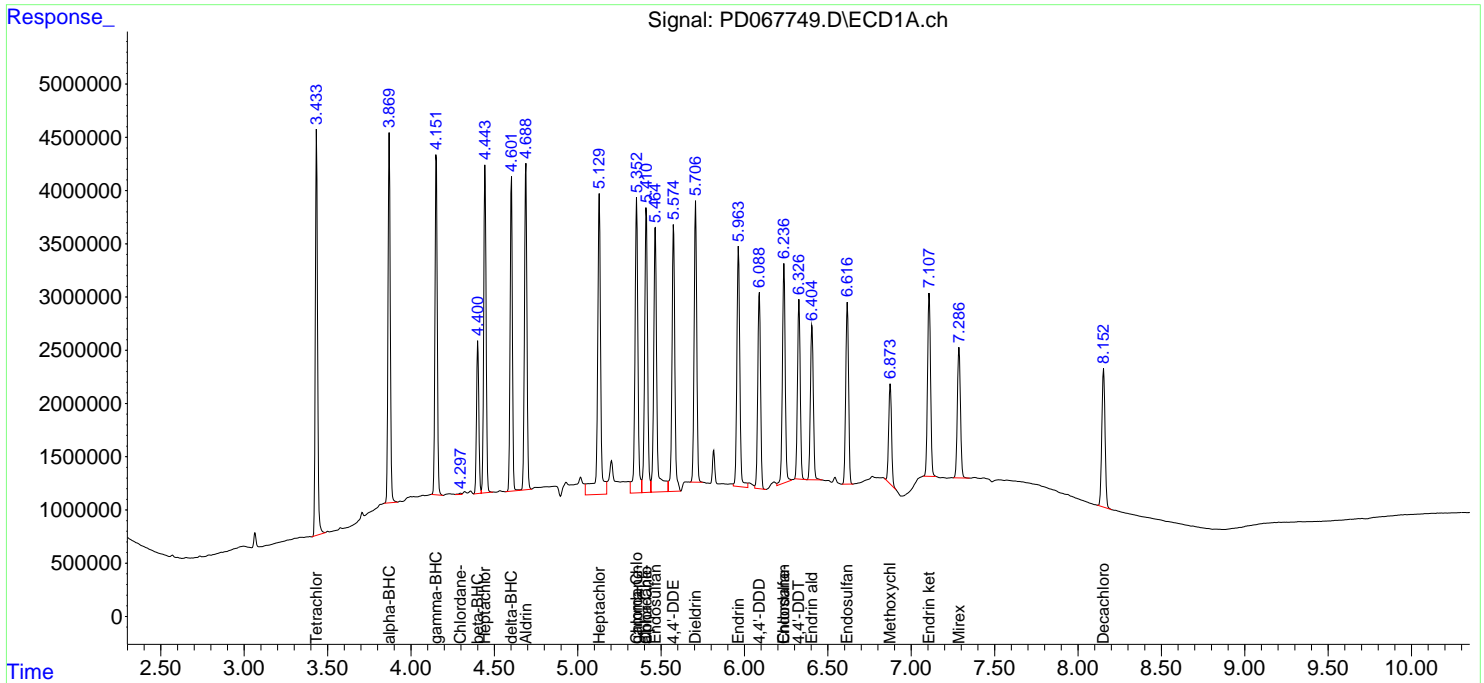
(f)=RT Delta > 1/2 Window (#)=Amounts differ by > 25% (m)=manual int.

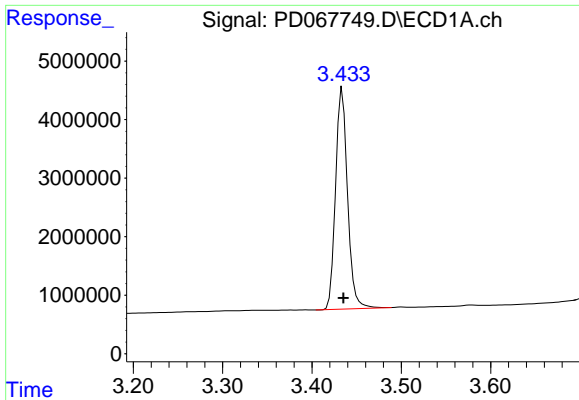
Data Path : Z:\pestpcbsrv\HPCHEM1\ECD\_D\Data\PD012122\  
 Data File : PD067749.D  
 Signal(s) : Signal #1: ECD1A.ch Signal #2: ECD2B.ch  
 Acq On : 21 Jan 2022 10:26  
 Operator : AR\AJ  
 Sample : PB142149BSD  
 Misc :  
 ALS Vial : 7 Sample Multiplier: 1

Instrument :  
 ECD\_D  
 ClientSampleId :

Integration File signal 1: autoint1.e  
 Integration File signal 2: autoint2.e  
 Quant Time: Jan 23 23:55:13 2022  
 Quant Method : Z:\pestpcbsrv\HPCHEM1\ECD\_L\methods\PD122821.M  
 Quant Title : GC Extractables  
 QLast Update : Tue Dec 28 03:00:50 2021  
 Response via : Initial Calibration  
 Integrator: ChemStation

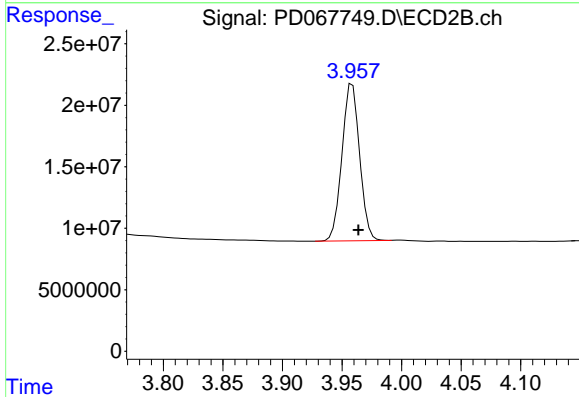
Volume Inj. : 1 µl  
 Signal #1 Phase : ZB-MR2 Signal #2 Phase: ZB-MR1  
 Signal #1 Info : 30M x 0.32mm x0.2 Signal #2 Info : 30M x 0.32mm x0.5µm



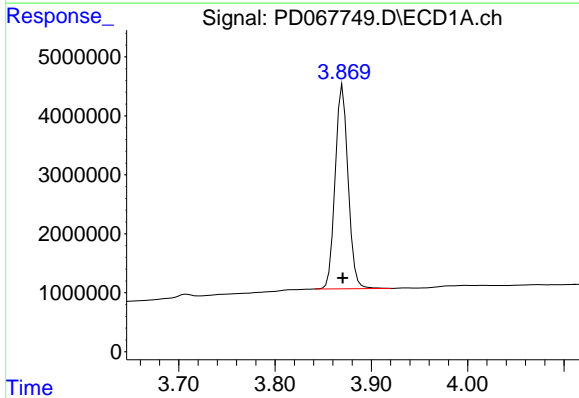


#1 Tetrachloro-m-xylene  
 R.T.: 3.434 min  
 Delta R.T.: 0.000 min  
 Response: 35200251  
 Conc: 19.37 ng/ml

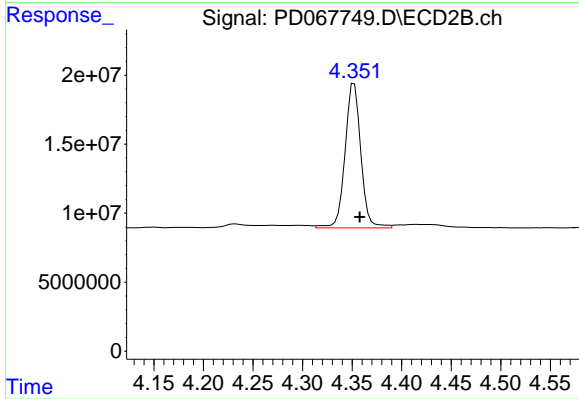
Instrument :  
 ECD\_D  
 ClientSampleId :



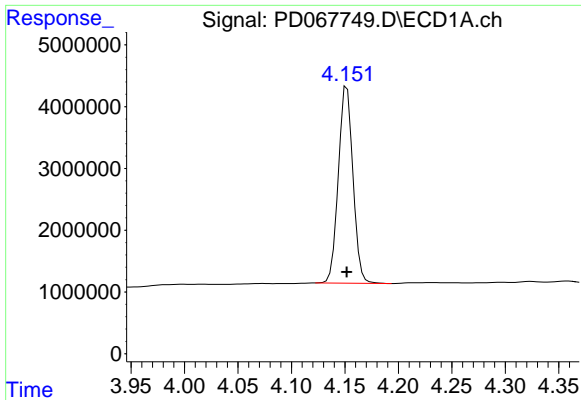
#1 Tetrachloro-m-xylene  
 R.T.: 3.959 min  
 Delta R.T.: -0.005 min  
 Response: 131509321  
 Conc: 19.93 ng/ml



#2 alpha-BHC  
 R.T.: 3.870 min  
 Delta R.T.: 0.000 min  
 Response: 32317660  
 Conc: 11.21 ng/ml

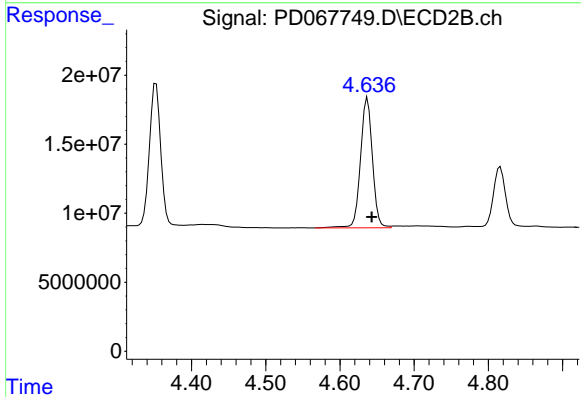


#2 alpha-BHC  
 R.T.: 4.352 min  
 Delta R.T.: -0.006 min  
 Response: 116093389  
 Conc: 12.51 ng/ml

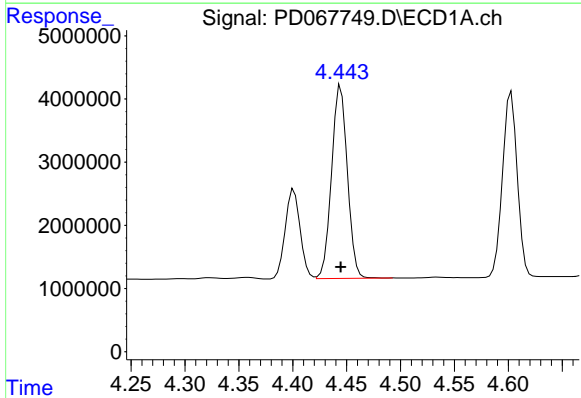


#3 gamma-BHC (Lindane)  
 R.T.: 4.152 min  
 Delta R.T.: 0.000 min  
 Response: 30374099  
 Conc: 11.42 ng/ml

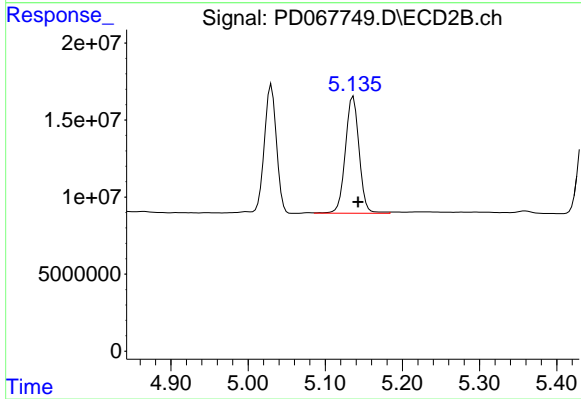
Instrument :  
 ECD\_D  
 ClientSampleId :



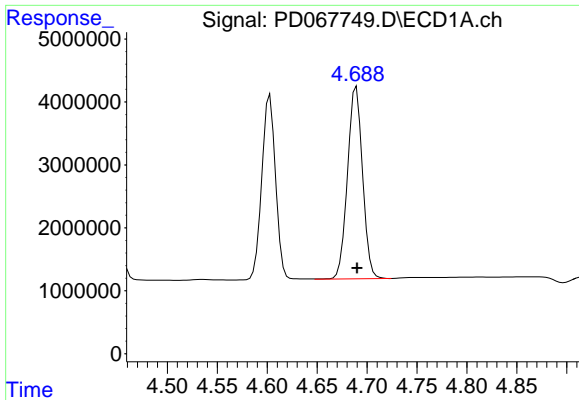
#3 gamma-BHC (Lindane)  
 R.T.: 4.637 min  
 Delta R.T.: -0.006 min  
 Response: 105397038  
 Conc: 12.51 ng/ml



#4 Heptachlor  
 R.T.: 4.445 min  
 Delta R.T.: 0.000 min  
 Response: 31090918  
 Conc: 11.43 ng/ml

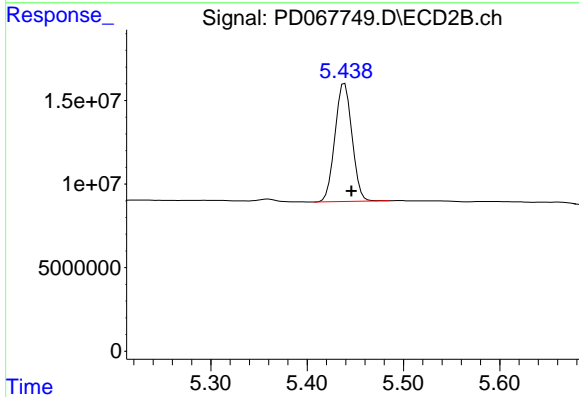


#4 Heptachlor  
 R.T.: 5.136 min  
 Delta R.T.: -0.006 min  
 Response: 93625440  
 Conc: 12.20 ng/ml

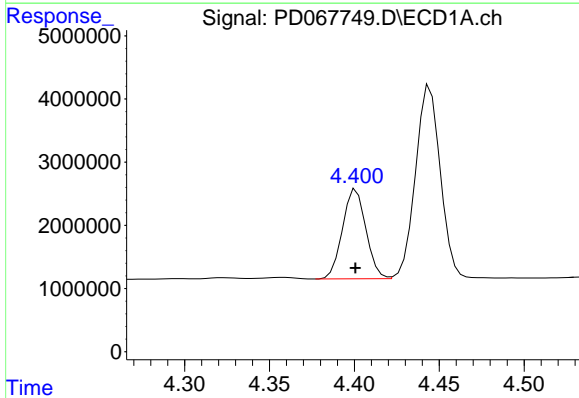


#5 Aldrin  
 R.T.: 4.689 min  
 Delta R.T.: 0.000 min  
 Response: 32038619  
 Conc: 11.58 ng/ml

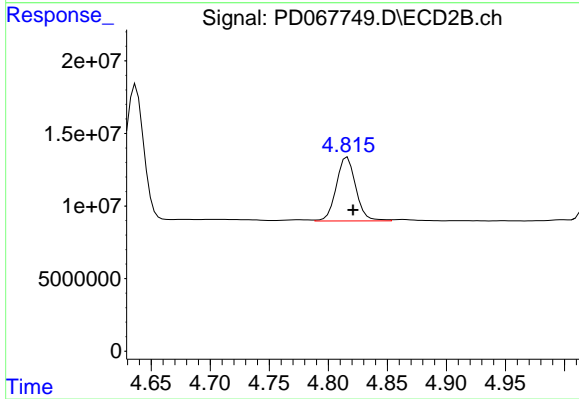
Instrument :  
 ECD\_D  
 ClientSampleId :



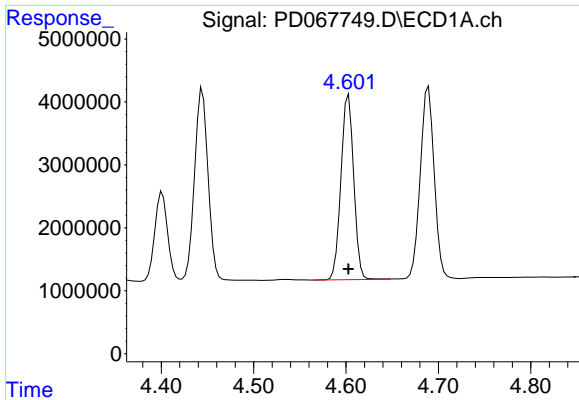
#5 Aldrin  
 R.T.: 5.439 min  
 Delta R.T.: -0.007 min  
 Response: 86904369  
 Conc: 11.72 ng/ml



#6 beta-BHC  
 R.T.: 4.401 min  
 Delta R.T.: 0.000 min  
 Response: 13633742  
 Conc: 12.41 ng/ml



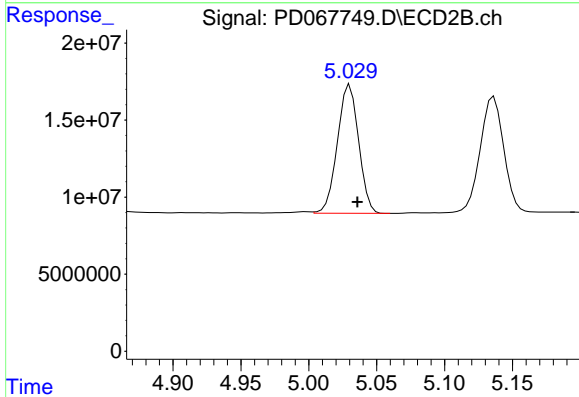
#6 beta-BHC  
 R.T.: 4.816 min  
 Delta R.T.: -0.005 min  
 Response: 50618269  
 Conc: 12.98 ng/ml



#7 delta-BHC

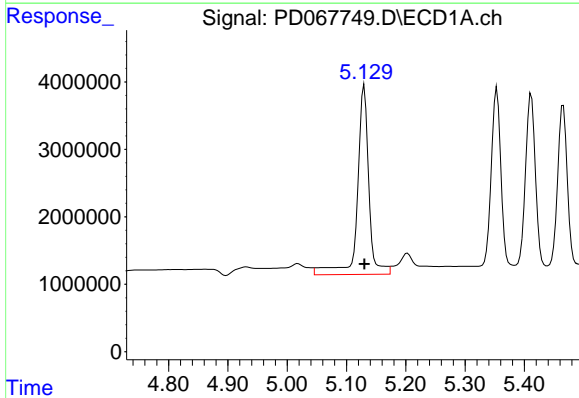
R.T.: 4.603 min  
 Delta R.T.: 0.000 min  
 Response: 28188100  
 Conc: 10.92 ng/ml

Instrument :  
 ECD\_D  
 ClientSampleId :



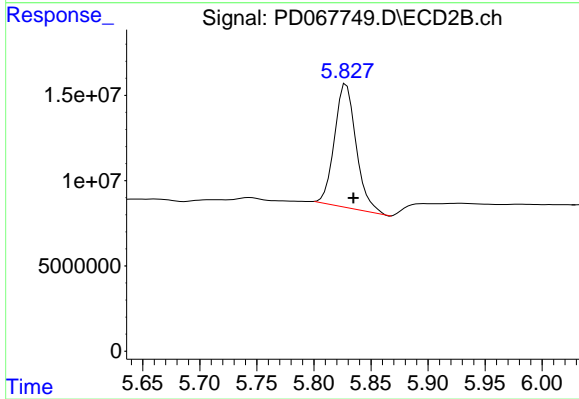
#7 delta-BHC

R.T.: 5.030 min  
 Delta R.T.: -0.006 min  
 Response: 90897536  
 Conc: 12.13 ng/ml



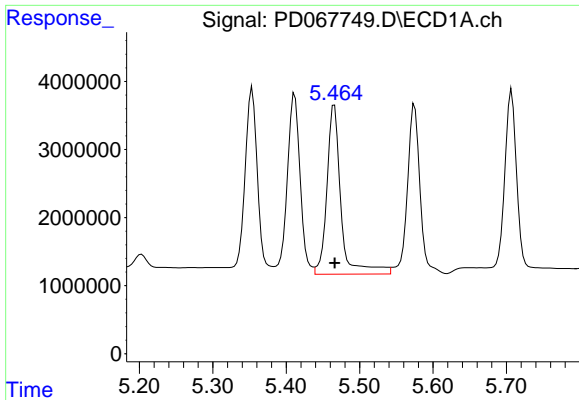
#8 Heptachlor epoxide

R.T.: 5.130 min  
 Delta R.T.: 0.000 min  
 Response: 37709902  
 Conc: 15.30 ng/ml



#8 Heptachlor epoxide

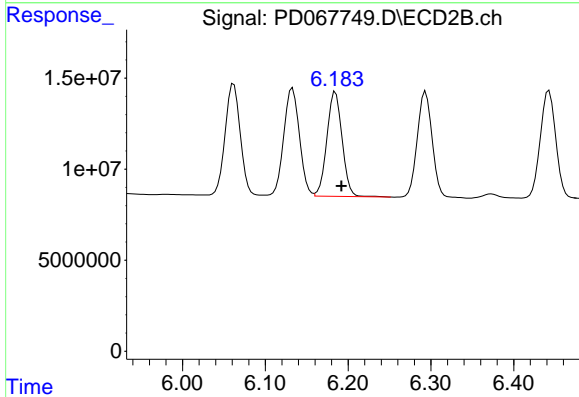
R.T.: 5.828 min  
 Delta R.T.: -0.006 min  
 Response: 95919858  
 Conc: 17.97 ng/ml



#9 Endosulfan I

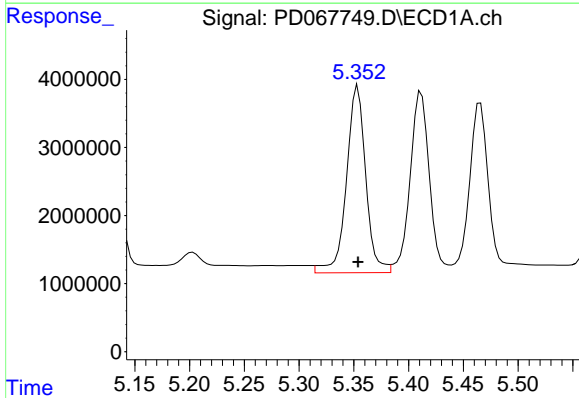
R.T.: 5.466 min  
 Delta R.T.: 0.000 min  
 Response: 33130910  
 Conc: 14.89 ng/ml

Instrument :  
 ECD\_D  
 ClientSampleId :



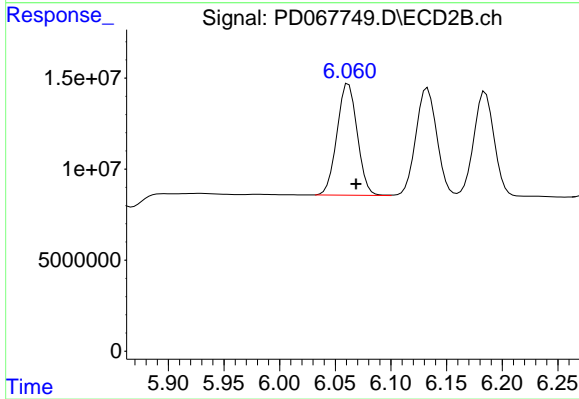
#9 Endosulfan I

R.T.: 6.185 min  
 Delta R.T.: -0.007 min  
 Response: 73519889  
 Conc: 12.14 ng/ml



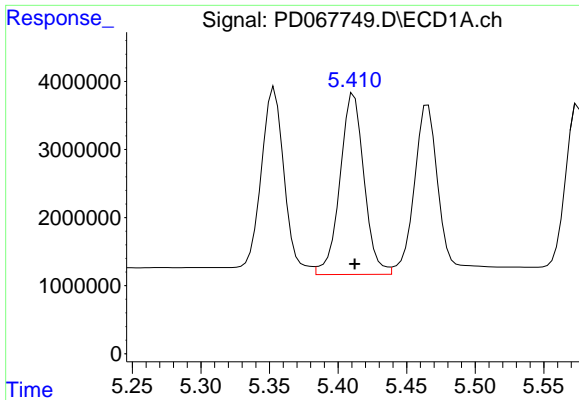
#10 gamma-Chlordane

R.T.: 5.354 min  
 Delta R.T.: 0.000 min  
 Response: 33678472  
 Conc: 13.62 ng/ml



#10 gamma-Chlordane

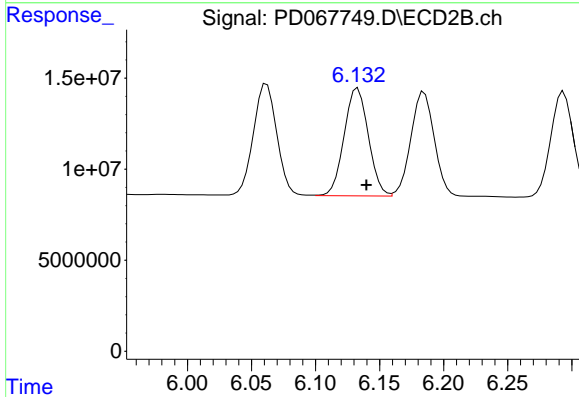
R.T.: 6.062 min  
 Delta R.T.: -0.007 min  
 Response: 77607483  
 Conc: 11.96 ng/ml



#11 alpha-Chlordane

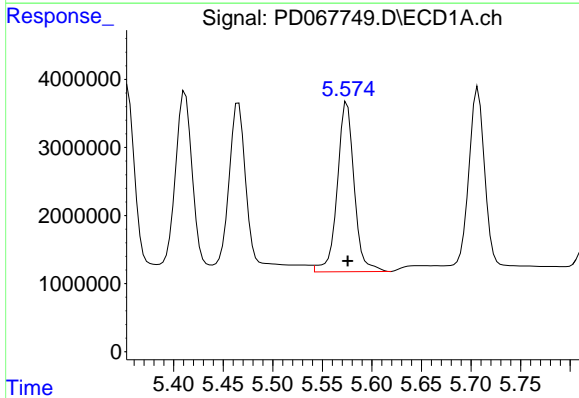
R.T.: 5.412 min  
 Delta R.T.: 0.000 min  
 Response: 32589827  
 Conc: 13.48 ng/ml

Instrument :  
 ECD\_D  
 ClientSampleId :



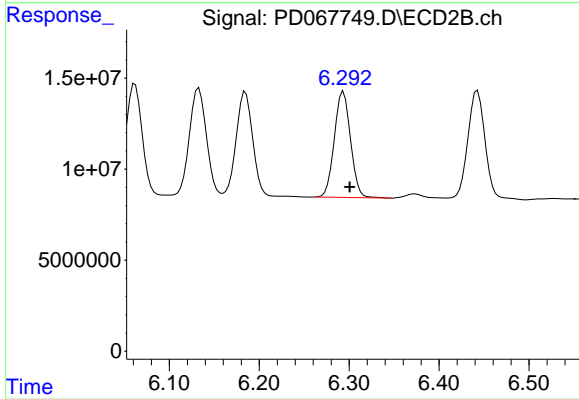
#11 alpha-Chlordane

R.T.: 6.133 min  
 Delta R.T.: -0.007 min  
 Response: 77912892  
 Conc: 12.02 ng/ml



#12 4,4'-DDE

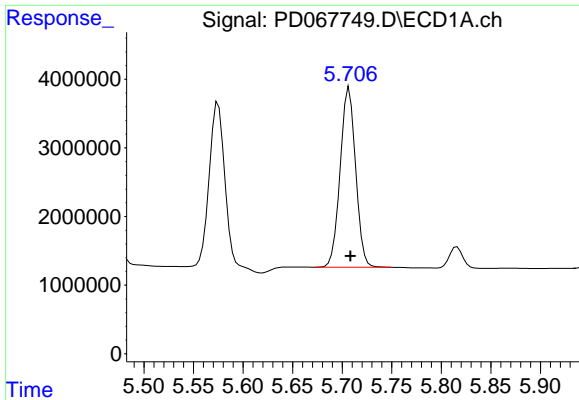
R.T.: 5.575 min  
 Delta R.T.: 0.000 min  
 Response: 29622266  
 Conc: 13.38 ng/ml



#12 4,4'-DDE

R.T.: 6.294 min  
 Delta R.T.: -0.007 min  
 Response: 72956091  
 Conc: 11.84 ng/ml

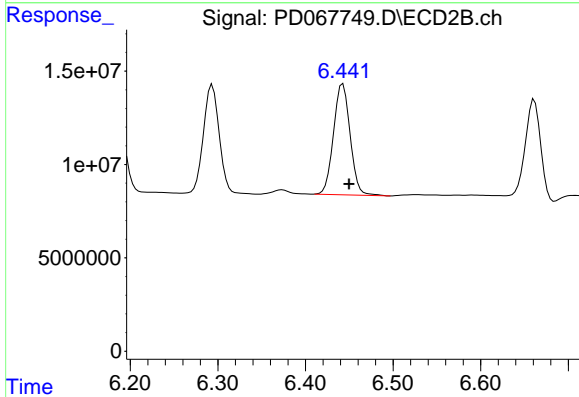




#13 Dieldrin

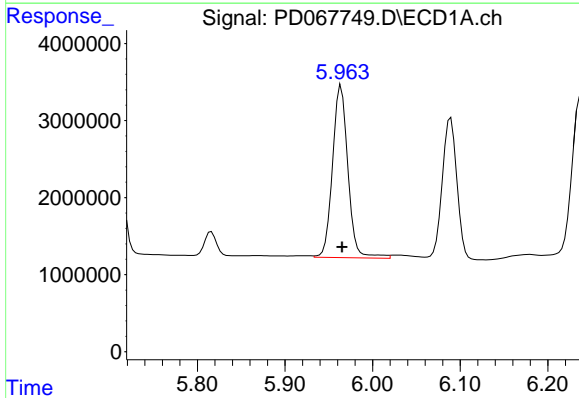
R.T.: 5.707 min  
 Delta R.T.: -0.001 min  
 Response: 28388296  
 Conc: 11.76 ng/ml

Instrument :  
 ECD\_D  
 ClientSampleId :



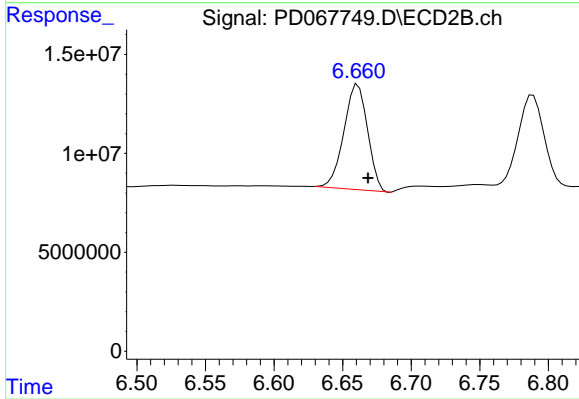
#13 Dieldrin

R.T.: 6.443 min  
 Delta R.T.: -0.007 min  
 Response: 78532074  
 Conc: 11.82 ng/ml



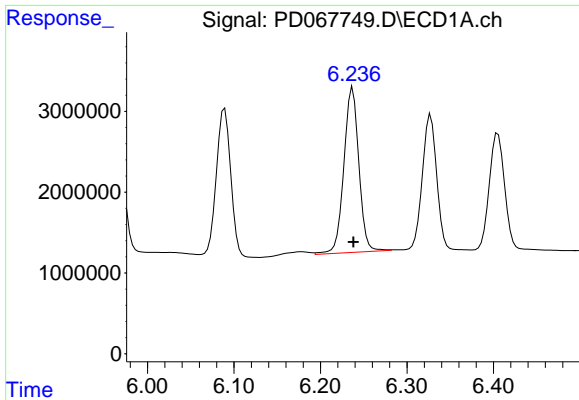
#14 Endrin

R.T.: 5.964 min  
 Delta R.T.: -0.001 min  
 Response: 27437671  
 Conc: 13.06 ng/ml



#14 Endrin

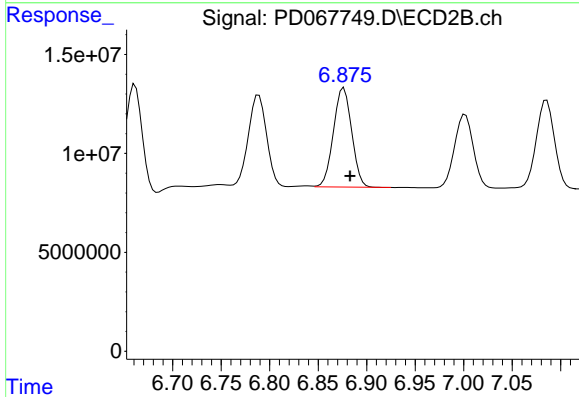
R.T.: 6.661 min  
 Delta R.T.: -0.007 min  
 Response: 63954168  
 Conc: 11.54 ng/ml



#15 Endosulfan II

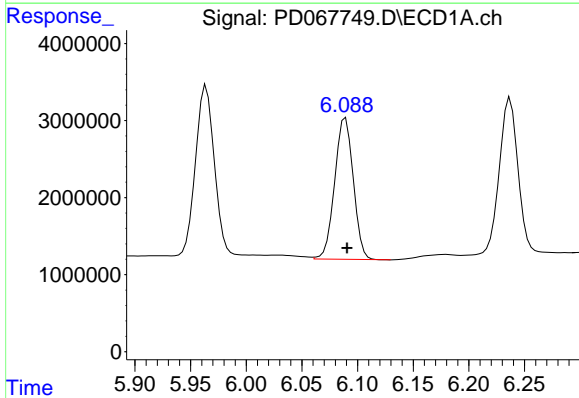
R.T.: 6.237 min  
 Delta R.T.: 0.000 min  
 Response: 24402766  
 Conc: 12.17 ng/ml

Instrument :  
 ECD\_D  
 ClientSampleId :



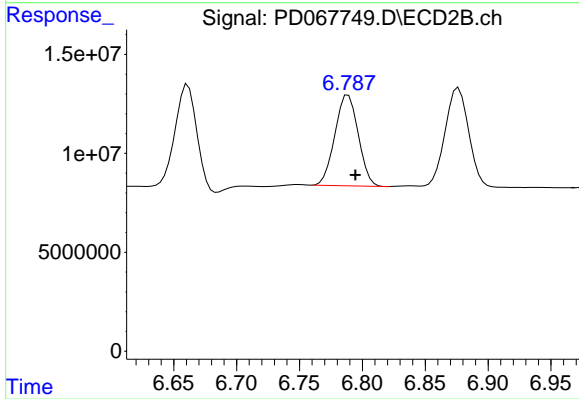
#15 Endosulfan II

R.T.: 6.877 min  
 Delta R.T.: -0.006 min  
 Response: 65469203  
 Conc: 11.02 ng/ml



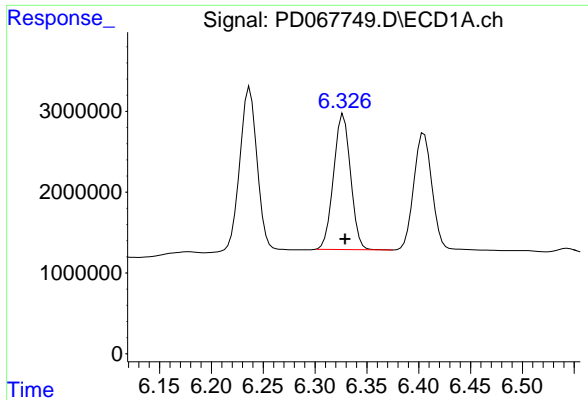
#16 4,4'-DDD

R.T.: 6.089 min  
 Delta R.T.: -0.001 min  
 Response: 21394572  
 Conc: 12.45 ng/ml



#16 4,4'-DDD

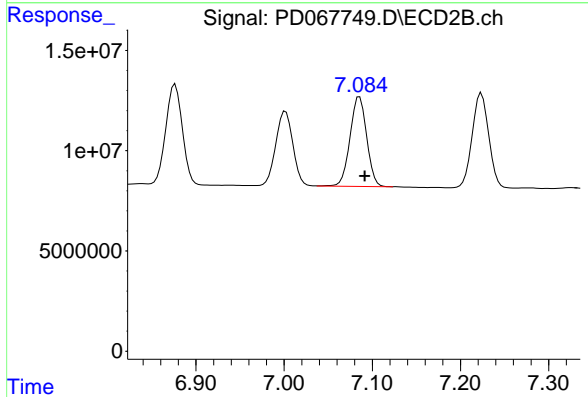
R.T.: 6.789 min  
 Delta R.T.: -0.006 min  
 Response: 59371648  
 Conc: 11.86 ng/ml



#17 4,4'-DDT

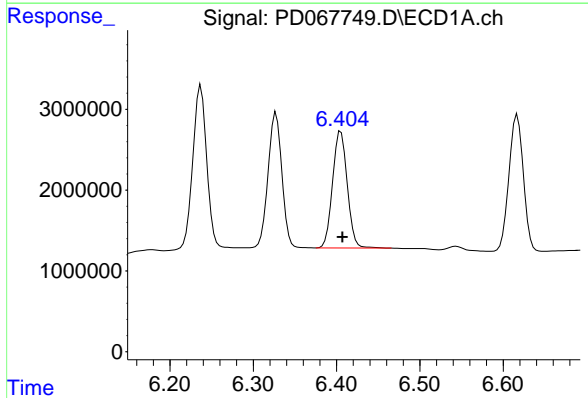
R.T.: 6.327 min  
 Delta R.T.: -0.001 min  
 Response: 19119790  
 Conc: 11.70 ng/ml

Instrument :  
 ECD\_D  
 ClientSampleId :



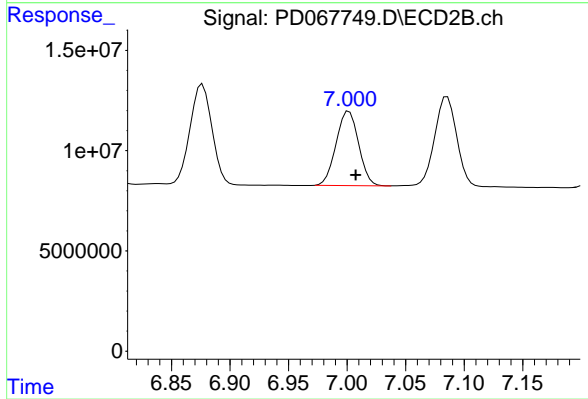
#17 4,4'-DDT

R.T.: 7.086 min  
 Delta R.T.: -0.006 min  
 Response: 58809917  
 Conc: 10.99 ng/ml



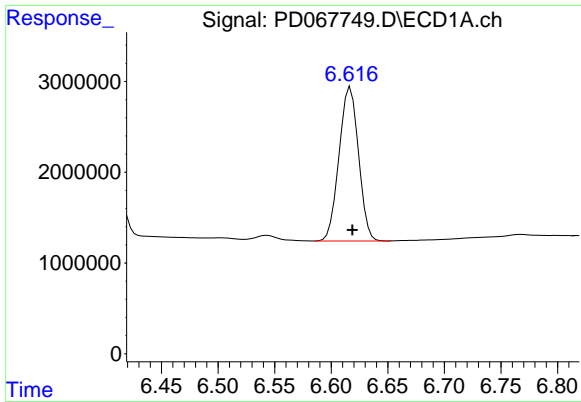
#18 Endrin aldehyde

R.T.: 6.405 min  
 Delta R.T.: -0.002 min  
 Response: 17722110  
 Conc: 11.66 ng/ml



#18 Endrin aldehyde

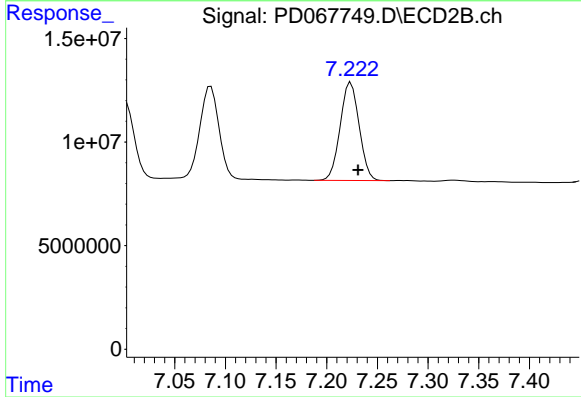
R.T.: 7.002 min  
 Delta R.T.: -0.006 min  
 Response: 49798621  
 Conc: 11.04 ng/ml



#19 Endosulfan Sulfate

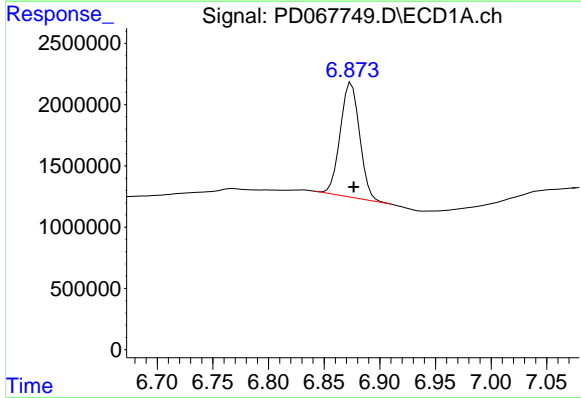
R.T.: 6.617 min  
 Delta R.T.: -0.002 min  
 Response: 20279659  
 Conc: 12.56 ng/ml

Instrument :  
 ECD\_D  
 ClientSampleId :



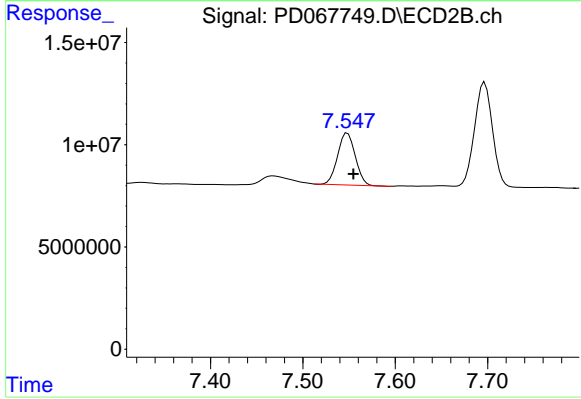
#19 Endosulfan Sulfate

R.T.: 7.224 min  
 Delta R.T.: -0.007 min  
 Response: 61659301  
 Conc: 11.28 ng/ml



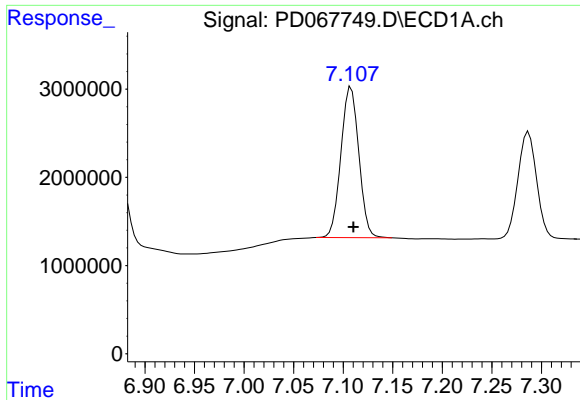
#20 Methoxychlor

R.T.: 6.874 min  
 Delta R.T.: -0.002 min  
 Response: 11209568  
 Conc: 13.21 ng/ml



#20 Methoxychlor

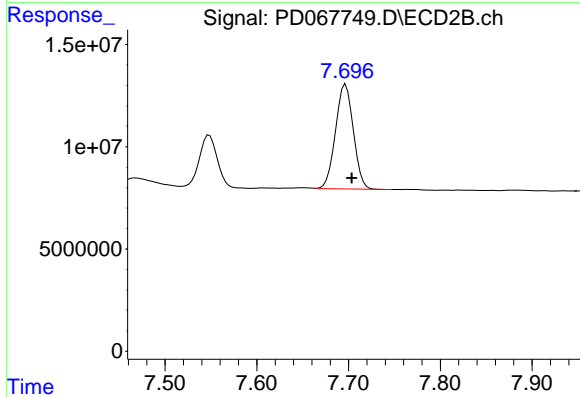
R.T.: 7.548 min  
 Delta R.T.: -0.006 min  
 Response: 33735711  
 Conc: 11.63 ng/ml



#21 Endrin ketone

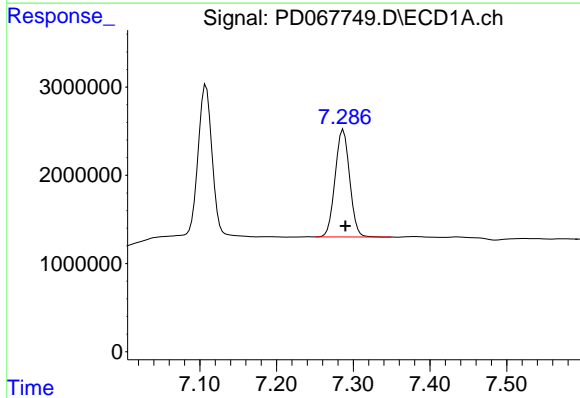
R.T.: 7.108 min  
 Delta R.T.: -0.002 min  
 Response: 21517696  
 Conc: 12.57 ng/ml

Instrument :  
 ECD\_D  
 ClientSampleId :



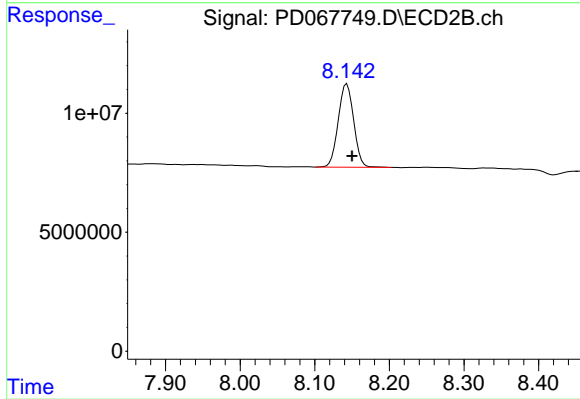
#21 Endrin ketone

R.T.: 7.697 min  
 Delta R.T.: -0.007 min  
 Response: 69302185  
 Conc: 11.04 ng/ml



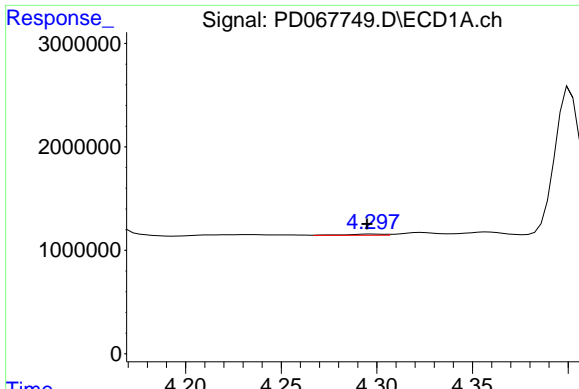
#22 Mirex

R.T.: 7.287 min  
 Delta R.T.: -0.003 min  
 Response: 16036501  
 Conc: 13.41 ng/ml



#22 Mirex

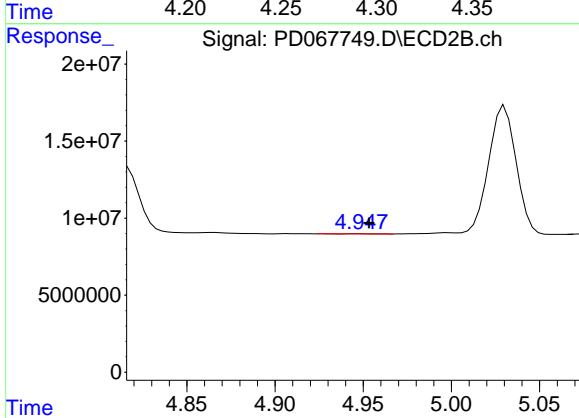
R.T.: 8.143 min  
 Delta R.T.: -0.007 min  
 Response: 50292600  
 Conc: 11.58 ng/ml



#23 Chlordane-1

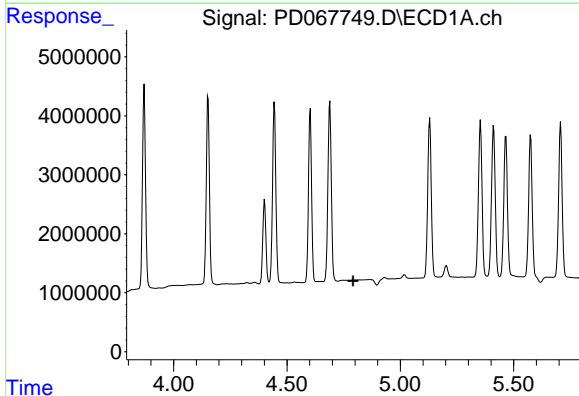
R.T.: 4.298 min  
 Delta R.T.: 0.003 min  
 Response: 159119  
 Conc: 2.01 ng/ml

Instrument :  
 ECD\_D  
 ClientSampleId :



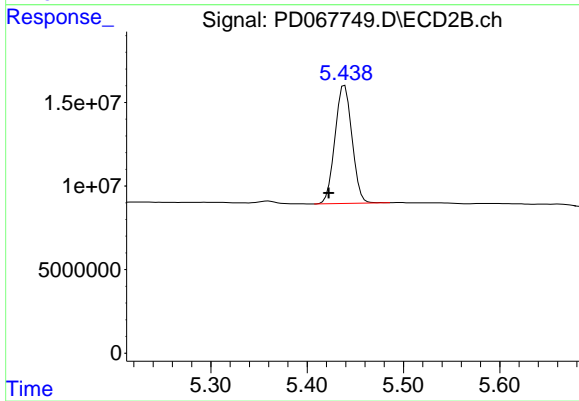
#23 Chlordane-1

R.T.: 4.949 min  
 Delta R.T.: -0.005 min  
 Response: 87946  
 Conc: 0.33 ng/ml



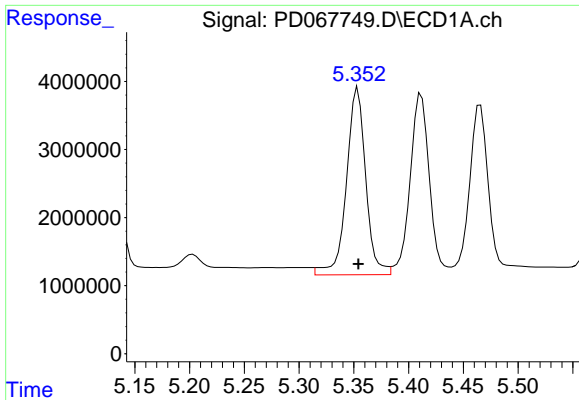
#24 Chlordane-2

R.T.: 0.000 min  
 Exp R.T. : 4.792 min  
 Response: 0  
 Conc: N.D.



#24 Chlordane-2

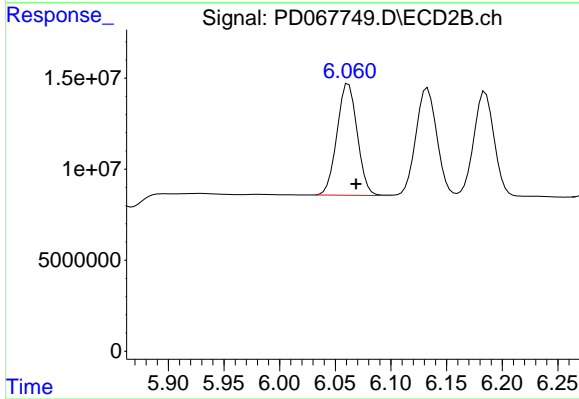
R.T.: 5.439 min  
 Delta R.T.: 0.017 min  
 Response: 86904369  
 Conc: 316.72 ng/ml



#25 Chlordane-3

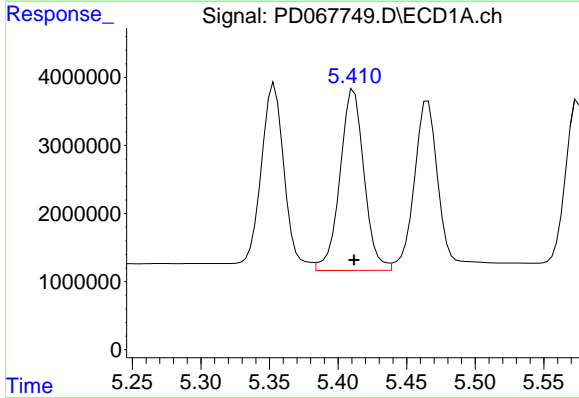
R.T.: 5.354 min  
 Delta R.T.: 0.000 min  
 Response: 33678472  
 Conc: 126.31 ng/ml

Instrument :  
 ECD\_D  
 ClientSampleId :



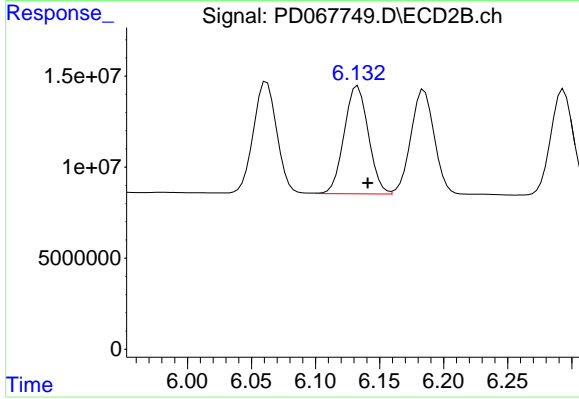
#25 Chlordane-3

R.T.: 6.062 min  
 Delta R.T.: -0.007 min  
 Response: 77607483  
 Conc: 80.57 ng/ml



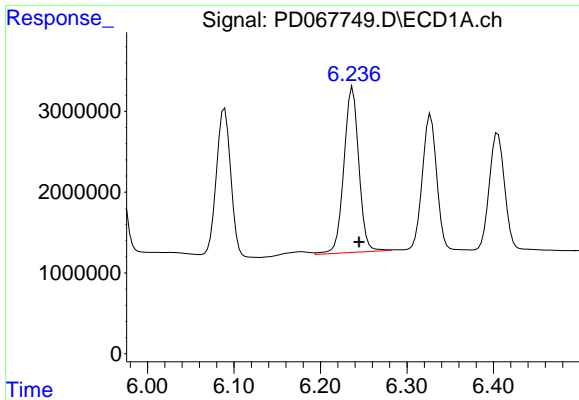
#26 Chlordane-4

R.T.: 5.412 min  
 Delta R.T.: 0.000 min  
 Response: 32589827  
 Conc: 148.10 ng/ml



#26 Chlordane-4

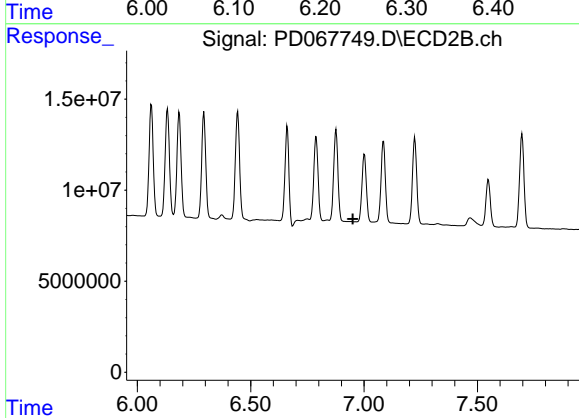
R.T.: 6.133 min  
 Delta R.T.: -0.008 min  
 Response: 77912892  
 Conc: 68.24 ng/ml



#27 Chlordane-5

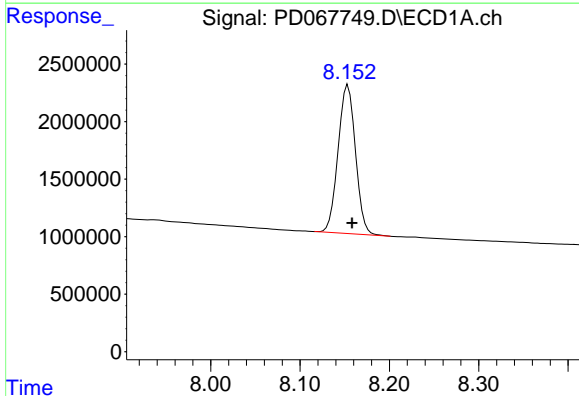
R.T.: 6.237 min  
 Delta R.T.: -0.008 min  
 Response: 24402766  
 Conc: 281.88 ng/ml

Instrument :  
 ECD\_D  
 ClientSampleId :



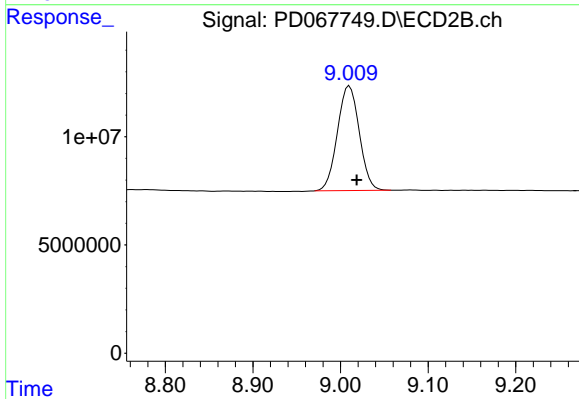
#27 Chlordane-5

R.T.: 0.000 min  
 Exp R.T. : 6.950 min  
 Response: 0  
 Conc: N.D.



#28 Decachlorobiphenyl

R.T.: 8.154 min  
 Delta R.T.: -0.004 min  
 Response: 17455312  
 Conc: 19.65 ng/ml



#28 Decachlorobiphenyl

R.T.: 9.010 min  
 Delta R.T.: -0.009 min  
 Response: 83990195  
 Conc: 17.67 ng/ml