

Data Path : Z:\pestpcbsrv\HPCHEM1\ECD\_D\Data\PD012220\  
 Data File : PD057047.D  
 Signal(s) : Signal #1: ECD1A.ch Signal #2: ECD2B.ch  
 Acq On : 21 Jan 2020 12:37  
 Operator : AJ\MA  
 Sample : PIBLK15  
 Misc :  
 ALS Vial : 2 Sample Multiplier: 1

Instrument :  
 ECD\_D  
 ClientSampleId :  
 PIBLK15

Integration File signal 1: autoint1.e  
 Integration File signal 2: autoint2.e  
 Quant Time: Jan 21 16:06:42 2020  
 Quant Method : Z:\pestpcbsrv\HPCHEM1\ECD\_D\Method\PD010920CLP.M  
 Quant Title : GC Extractables  
 QLast Update : Fri Jan 10 06:39:54 2020  
 Response via : Initial Calibration  
 Integrator: ChemStation

Volume Inj. : 1 µl  
 Signal #1 Phase : ZB-MR2 Signal #2 Phase: ZB-MR1  
 Signal #1 Info : 30M x 0.32mm x0.2 Signal #2 Info : 30M x 0.32mm x 0.50µm

Compound	RT#1	RT#2	Resp#1	Resp#2	ng/ml	ng/ml
-----						
System Monitoring Compounds						
1) SA Tetrachlo...	3.285	3.959	17173570	34649383	21.204	23.490
27) SA Decachlor...	7.954	8.993	34598101	57712937	36.534	39.166

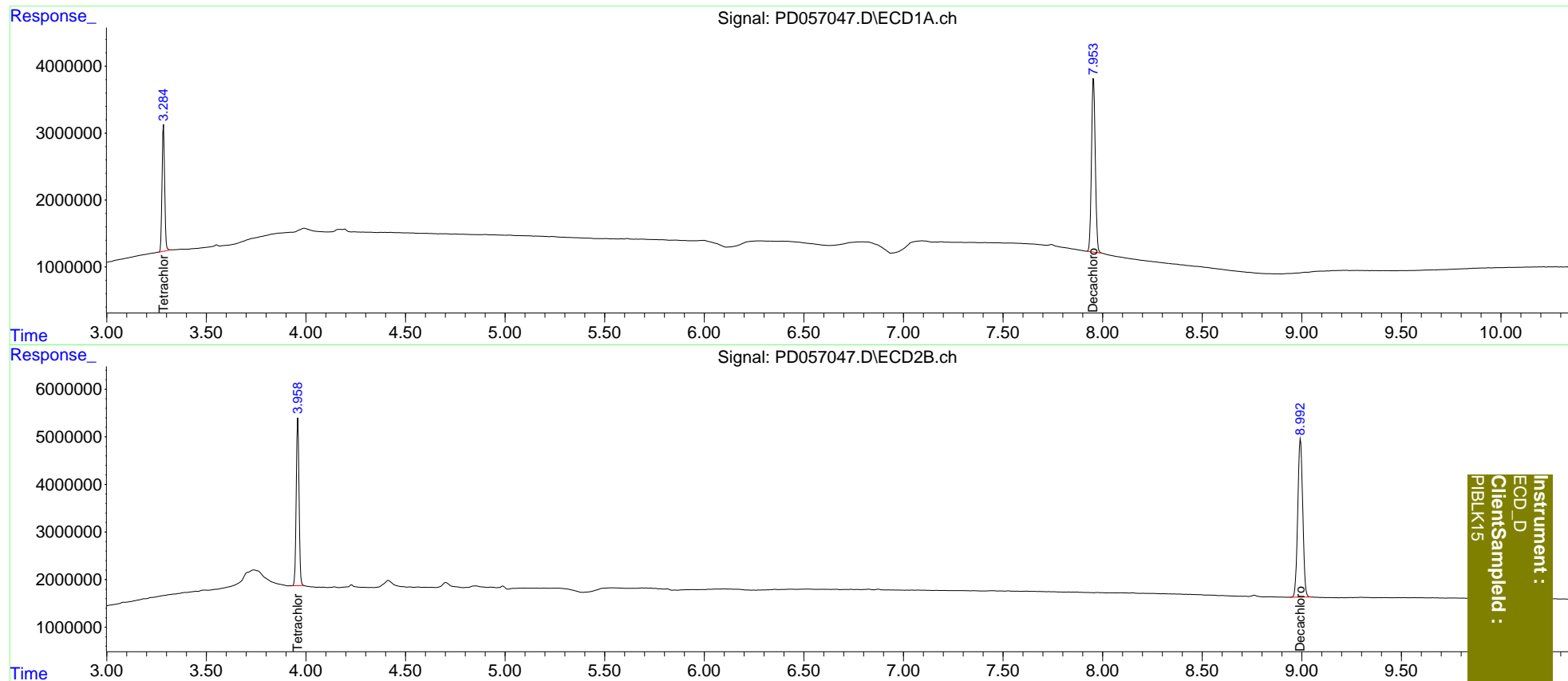
Target Compounds

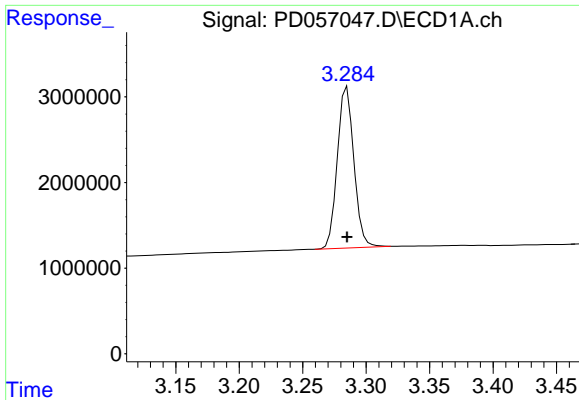
(f)=RT Delta > 1/2 Window (#)=Amounts differ by > 25% (m)=manual int.

Data Path : Z:\pestpcbsrv\HPCHEM1\ECD\_D\Data\PD012220\  
 Data File : PD057047.D  
 Signal(s) : Signal #1: ECD1A.ch Signal #2: ECD2B.ch  
 Acq On : 21 Jan 2020 12:37  
 Operator : AJ\MA  
 Sample : PIBLK15  
 Misc :  
 ALS Vial : 2 Sample Multiplier: 1

Integration File signal 1: autoint1.e  
 Integration File signal 2: autoint2.e  
 Quant Time: Jan 21 16:06:42 2020  
 Quant Method : Z:\pestpcbsrv\HPCHEM1\ECD\_D\Method\PD010920CLP.M  
 Quant Title : GC Extractables  
 QLast Update : Fri Jan 10 06:39:54 2020  
 Response via : Initial Calibration  
 Integrator: ChemStation

Volume Inj. : 1 µl  
 Signal #1 Phase : ZB-MR2 Signal #2 Phase: ZB-MR1  
 Signal #1 Info : 30M x 0.32mm x0.2 Signal #2 Info : 30M x 0.32mm x 0.50µm

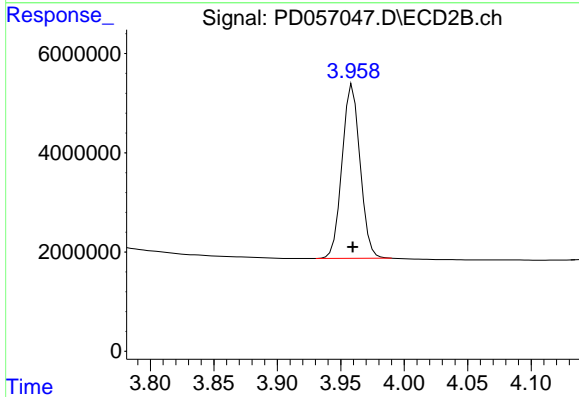




#1 Tetrachloro-m-xylene

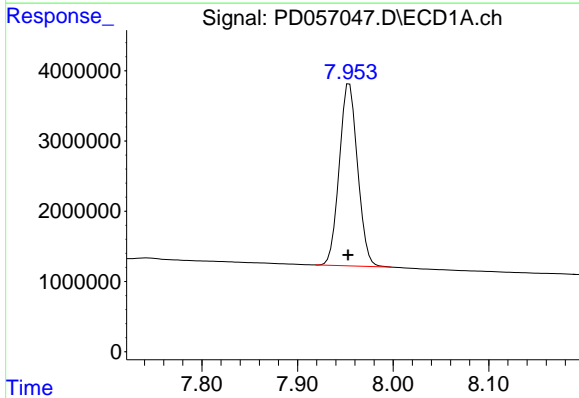
R.T.: 3.285 min  
Delta R.T.: 0.000 min  
Response: 17173570  
Conc: 21.20 ng/ml

Instrument :  
ECD\_D  
ClientSampleId :  
PIBLK15



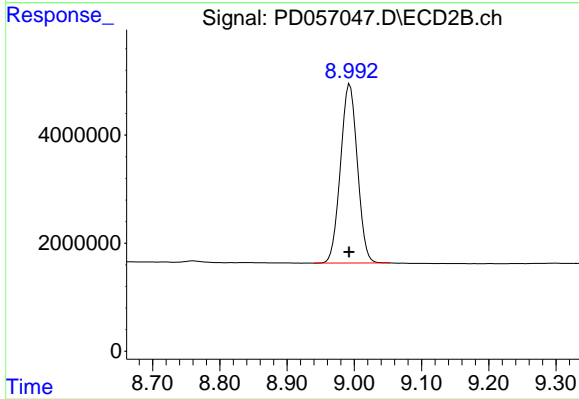
#1 Tetrachloro-m-xylene

R.T.: 3.959 min  
Delta R.T.: 0.000 min  
Response: 34649383  
Conc: 23.49 ng/ml



#27 Decachlorobiphenyl

R.T.: 7.954 min  
Delta R.T.: 0.001 min  
Response: 34598101  
Conc: 36.53 ng/ml



#27 Decachlorobiphenyl

R.T.: 8.993 min  
Delta R.T.: 0.000 min  
Response: 57712937  
Conc: 39.17 ng/ml