

Data Path : Z:\pestpcbsrv\HPCHEM1\ECD_D\Data\PD012220\
 Data File : PD057048.D
 Signal(s) : Signal #1: ECD1A.ch Signal #2: ECD2B.ch
 Acq On : 21 Jan 2020 12:51
 Operator : AJ\MA
 Sample : INDA308
 Misc :
 ALS Vial : 10 Sample Multiplier: 1

Instrument :
 ECD_D
 ClientSampleId :
 INDA308

Integration File signal 1: autoint1.e
 Integration File signal 2: autoint2.e
 Quant Time: Jan 22 09:39:45 2020
 Quant Method : Z:\pestpcbsrv\HPCHEM1\ECD_D\Method\PD010920CLP.M
 Quant Title : GC Extractables
 QLast Update : Fri Jan 10 06:39:54 2020
 Response via : Initial Calibration
 Integrator: ChemStation

Volume Inj. : 1 µl
 Signal #1 Phase : ZB-MR2 Signal #2 Phase: ZB-MR1
 Signal #1 Info : 30M x 0.32mm x0.2 Signal #2 Info : 30M x 0.32mm x 0.50µm

	Compound	RT#1	RT#2	Resp#1	Resp#2	ng/ml	ng/ml

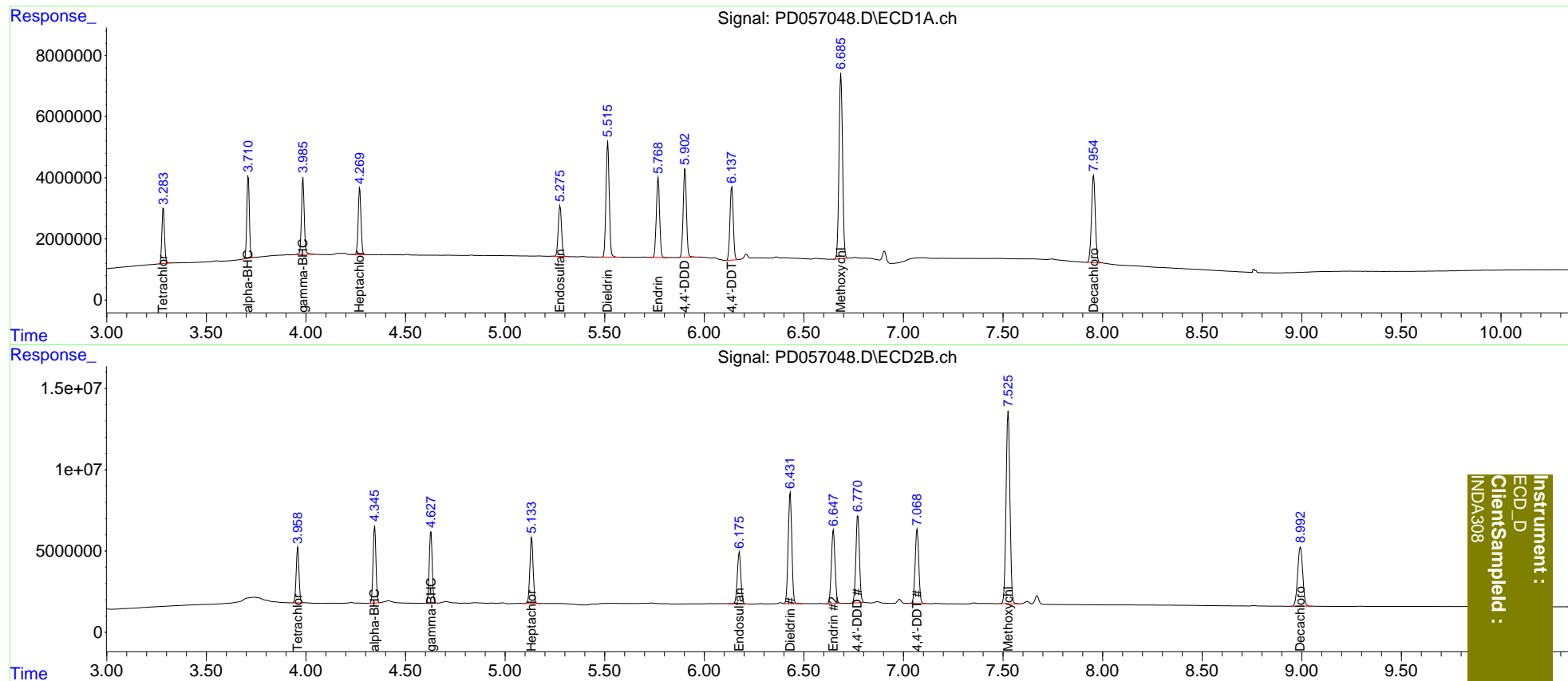
System Monitoring Compounds							
1)	SA Tetrachlo...	3.285	3.960	16588040	33489654	20.481	22.704
27)	SA Decachlor...	7.955	8.994	37953001	63989379	40.077	43.425
Target Compounds							
2)	A alpha-BHC	3.711	4.346	23956847	47299484	20.539	22.770
3)	MA gamma-BHC...	3.986	4.628	23926775	45744025	20.501	22.749
4)	MA Heptachlor	4.271	5.134	21561311	46305133	20.082	22.248
9)	A Endosulfan I	5.277	6.176	18994031	39341515	20.723	22.614
13)	MA Dieldrin	5.516	6.432	42497584	85751817	41.289	45.487
14)	MA Endrin	5.769	6.649	30082470	58195336	34.848	37.948
16)	A 4,4'-DDD	5.904	6.771	33068852	66680813	43.117	46.836
17)	MA 4,4'-DDT	6.139	7.069	27760020	57663924	38.835	40.712
20)	A Methoxychlor	6.687	7.526	75267161	160.9E6	192.953	206.128

(f)=RT Delta > 1/2 Window (#)=Amounts differ by > 25% (m)=manual int.

Data Path : Z:\pestpcbsrv\HPCHEM1\ECD_D\Data\PD012220\
 Data File : PD057048.D
 Signal(s) : Signal #1: ECD1A.ch Signal #2: ECD2B.ch
 Acq On : 21 Jan 2020 12:51
 Operator : AJ\MA
 Sample : INDA308
 Misc :
 ALS Vial : 10 Sample Multiplier: 1

Integration File signal 1: autoint1.e
 Integration File signal 2: autoint2.e
 Quant Time: Jan 22 09:39:45 2020
 Quant Method : Z:\pestpcbsrv\HPCHEM1\ECD_D\Method\PD010920CLP.M
 Quant Title : GC Extractables
 QLast Update : Fri Jan 10 06:39:54 2020
 Response via : Initial Calibration
 Integrator: ChemStation

Volume Inj. : 1 µl
 Signal #1 Phase : ZB-MR2 Signal #2 Phase: ZB-MR1
 Signal #1 Info : 30M x 0.32mm x0.2 Signal #2 Info : 30M x 0.32mm x 0.50µm



Instrument :
 ECD_D
 ClientSampleId :
 INDA308