

Data Path : Z:\pestpcbsrv\HPCHEM1\ECD\_D\Data\PD012320\  
 Data File : PD057052.D  
 Signal(s) : Signal #1: ECD1A.ch Signal #2: ECD2B.ch  
 Acq On : 23 Jan 2020 15:11  
 Operator : AJ\MA  
 Sample : PEM11  
 Misc :  
 ALS Vial : 3 Sample Multiplier: 1

Instrument :  
 ECD\_D  
 ClientSampleId :  
 PEM51

Integration File signal 1: autoint1.e  
 Integration File signal 2: autoint2.e  
 Quant Time: Jan 24 08:43:26 2020  
 Quant Method : Z:\pestpcbsrv\HPCHEM1\ECD\_D\Method\PD012320CLP.M  
 Quant Title : GC Extractables  
 QLast Update : Fri Jan 24 08:33:42 2020  
 Response via : Initial Calibration  
 Integrator: ChemStation

Volume Inj. : 1 µl  
 Signal #1 Phase : ZB-MR2 Signal #2 Phase: ZB-MR1  
 Signal #1 Info : 30M x 0.32mm x0.2 Signal #2 Info : 30M x 0.32mm x 0.50µm

Compound	RT#1	RT#2	Resp#1	Resp#2	ng/ml	ng/ml
-----						
System Monitoring Compounds						
1) SA Tetrachlo...	3.285	3.960	16869333	34665132	18.657	18.732
27) SA Decachlor...	7.955	8.995	21050695	37217568	19.336	19.916
Target Compounds						
2) A alpha-BHC	3.712	4.347	11823509	23445413	8.938	8.877
3) MA gamma-BHC...	3.987	4.629	12017767	22949845	9.050	8.960
4) MA Heptachlor	4.237f	0.000	5377649	0	4.375	N.D. #
6) B beta-BHC	4.237	4.798	5377649	11199576	9.495	9.606
14) MA Endrin	5.771	6.650	47161596	92180283	47.065	47.425
15) B Endosulfa...	6.001f	6.825	28924273	57094427	27.719	26.973
16) A 4,4'-DDD	0.000	6.825f	0	57094427	N.D.	30.913
17) MA 4,4'-DDT	6.140	7.070	88175686	186.9E6	102.665	96.152
20) A Methoxychlor	6.688	7.527	108.9E6	234.3E6	233.039	232.137
23) Toxaphene-2	0.000	6.650	0	92180283	N.D.	6649.941
24) Toxaphene-3	6.001	7.070	28924273	186.9E6	4790.567	8662.010 #
25) Toxaphene-4	6.140	7.070	88175686	186.9E6	4979.389	3585.889 #
-----						

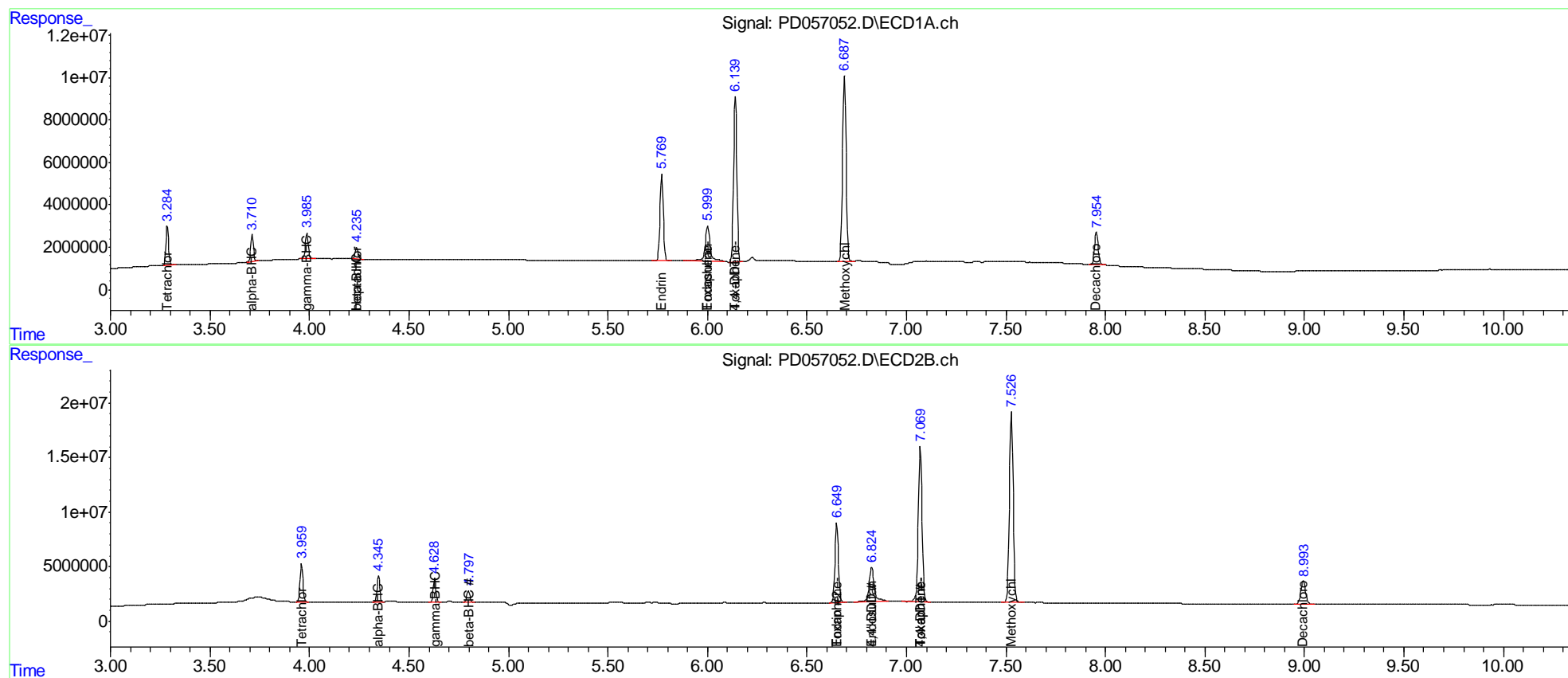
(f)=RT Delta > 1/2 Window (#)=Amounts differ by > 25% (m)=manual int.

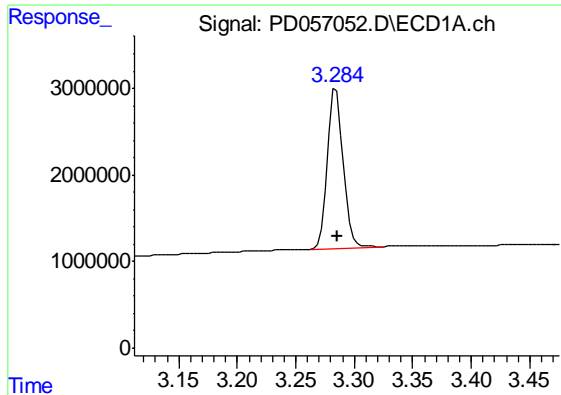
Data Path : Z:\pestpcbsrv\HPCHEM1\ECD\_D\Data\PD012320\  
 Data File : PD057052.D  
 Signal(s) : Signal #1: ECD1A.ch Signal #2: ECD2B.ch  
 Acq On : 23 Jan 2020 15:11  
 Operator : AJ\MA  
 Sample : PEM11  
 Misc :  
 ALS Vial : 3 Sample Multiplier: 1

Instrument :  
 ECD\_D  
 Client Sampled :  
 PEM51

Integration File signal 1: autoint1.e  
 Integration File signal 2: autoint2.e  
 Quant Time: Jan 24 08:43:26 2020  
 Quant Method : Z:\pestpcbsrv\HPCHEM1\ECD\_D\Method\PD012320CLP.M  
 Quant Title : GC Extractables  
 QLast Update : Fri Jan 24 08:33:42 2020  
 Response via : Initial Calibration  
 Integrator: ChemStation

Volume Inj. : 1 µl  
 Signal #1 Phase : ZB-MR2 Signal #2 Phase: ZB-MR1  
 Signal #1 Info : 30M x 0.32mm x0.2 Signal #2 Info : 30M x 0.32mm x 0.50µm

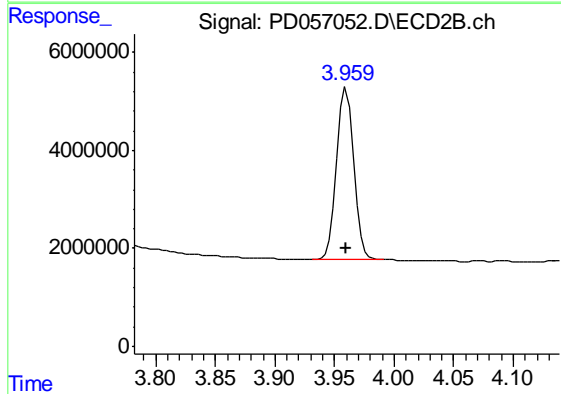




#1 Tetrachloro-m-xylene

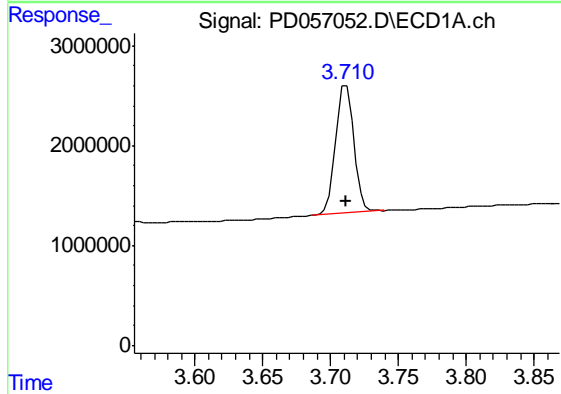
R.T.: 3.285 min  
 Delta R.T.: 0.000 min  
 Response: 16869333  
 Conc: 18.66 ng/ml

Instrument :  
 ECD\_D  
 ClientSampled :  
 PEM51



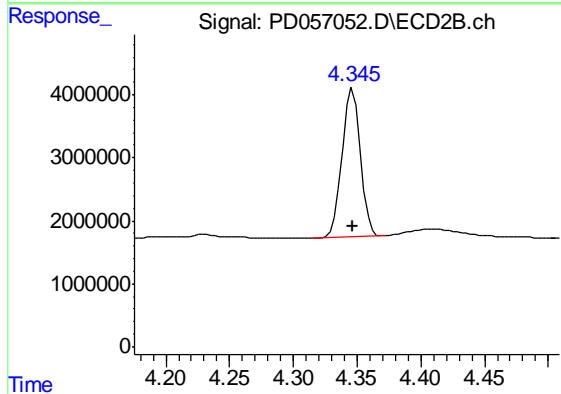
#1 Tetrachloro-m-xylene

R.T.: 3.960 min  
 Delta R.T.: 0.000 min  
 Response: 34665132  
 Conc: 18.73 ng/ml



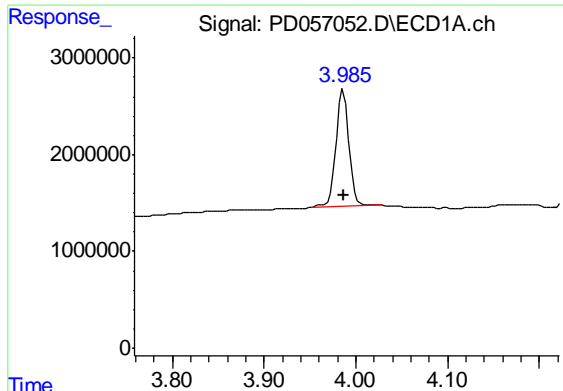
#2 alpha-BHC

R.T.: 3.712 min  
 Delta R.T.: 0.000 min  
 Response: 11823509  
 Conc: 8.94 ng/ml



#2 alpha-BHC

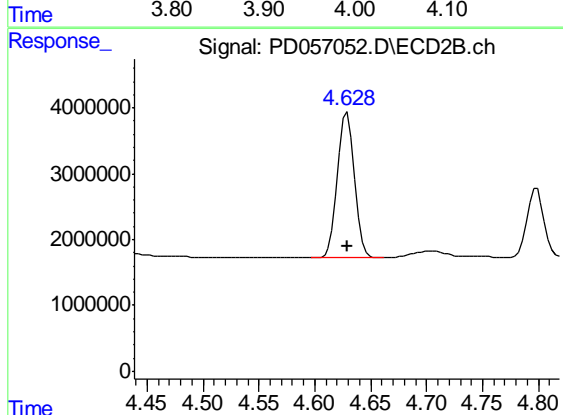
R.T.: 4.347 min  
 Delta R.T.: 0.000 min  
 Response: 23445413  
 Conc: 8.88 ng/ml



#3 gamma-BHC (Lindane)

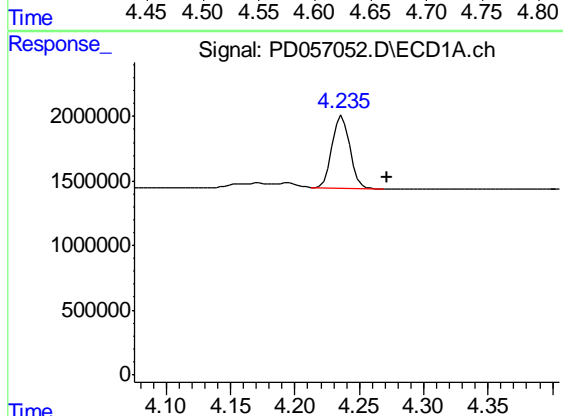
R.T.: 3.987 min  
 Delta R.T.: 0.000 min  
 Response: 12017767  
 Conc: 9.05 ng/ml

Instrument :  
 ECD\_D  
 ClientSampled :  
 PEM51



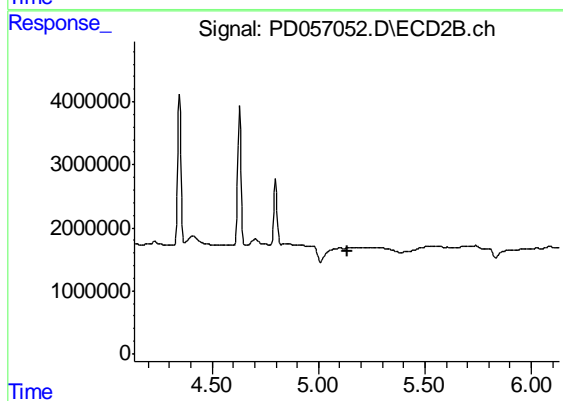
#3 gamma-BHC (Lindane)

R.T.: 4.629 min  
 Delta R.T.: 0.000 min  
 Response: 22949845  
 Conc: 8.96 ng/ml



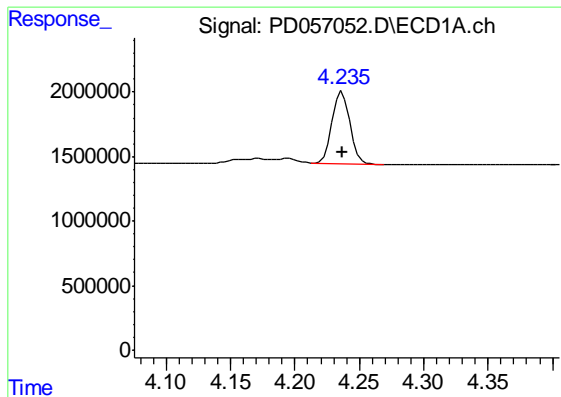
#4 Heptachlor

R.T.: 4.237 min  
 Delta R.T.: -0.035 min  
 Response: 5377649  
 Conc: 4.37 ng/ml



#4 Heptachlor

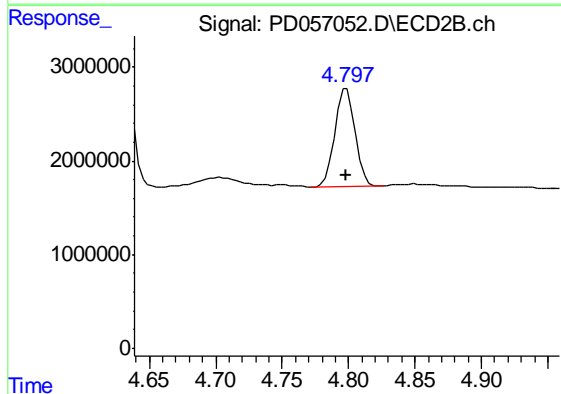
R.T.: 0.000 min  
 Exp R.T. : 5.135 min  
 Response: 0  
 Conc: N.D.



#6 beta-BHC

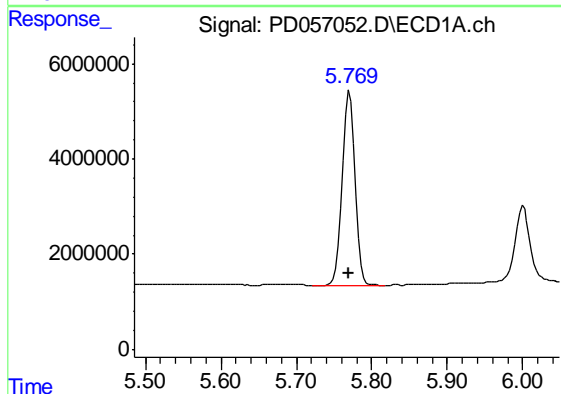
R.T.: 4.237 min  
 Delta R.T.: 0.000 min  
 Response: 5377649  
 Conc: 9.50 ng/ml

Instrument :  
 ECD\_D  
 ClientSampleId :  
 PEM51



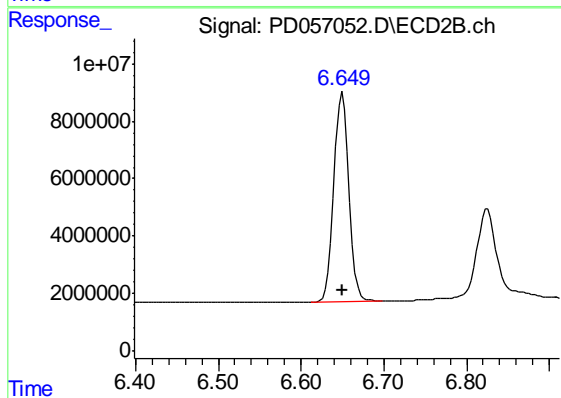
#6 beta-BHC

R.T.: 4.798 min  
 Delta R.T.: 0.000 min  
 Response: 11199576  
 Conc: 9.61 ng/ml



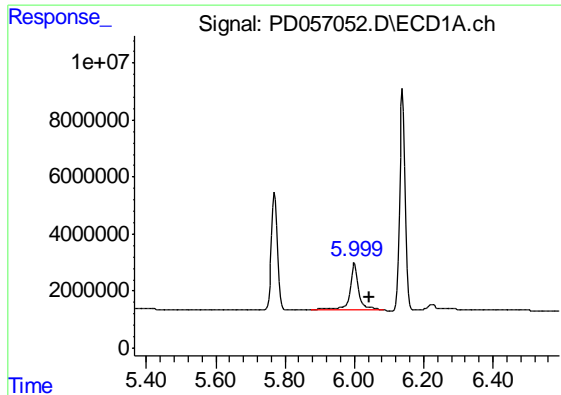
#14 Endrin

R.T.: 5.771 min  
 Delta R.T.: 0.000 min  
 Response: 47161596  
 Conc: 47.07 ng/ml



#14 Endrin

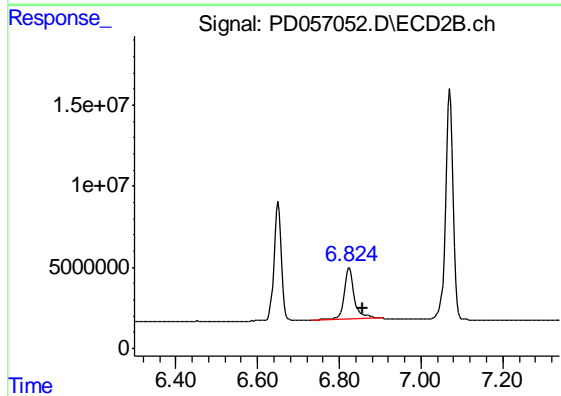
R.T.: 6.650 min  
 Delta R.T.: 0.000 min  
 Response: 92180283  
 Conc: 47.43 ng/ml



#15 Endosulfan II

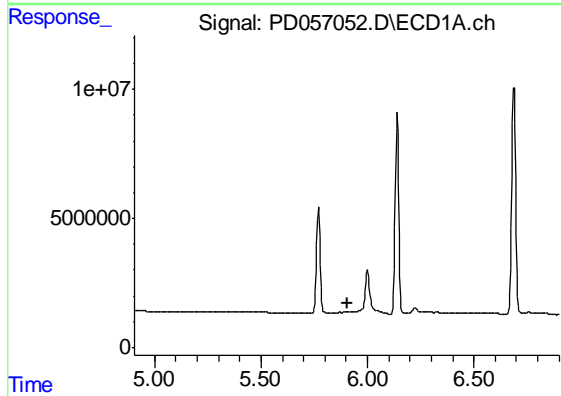
R.T.: 6.001 min  
 Delta R.T.: -0.043 min  
 Response: 28924273  
 Conc: 27.72 ng/ml

Instrument :  
 ECD\_D  
 ClientSampleId :  
 PEM51



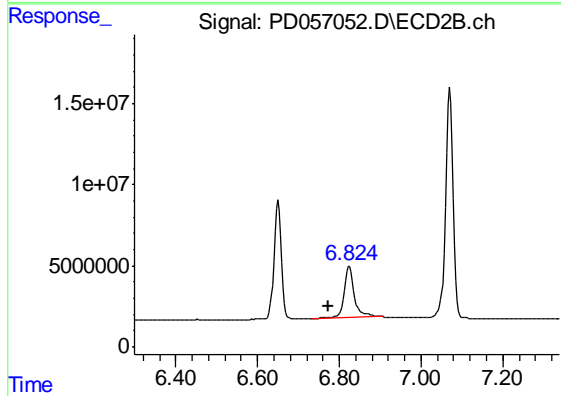
#15 Endosulfan II

R.T.: 6.825 min  
 Delta R.T.: -0.032 min  
 Response: 57094427  
 Conc: 26.97 ng/ml



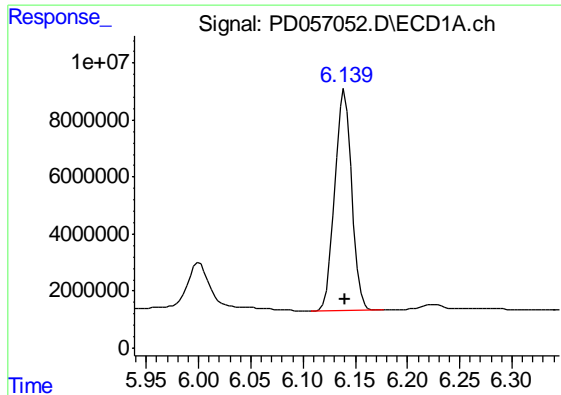
#16 4,4'-DDD

R.T.: 0.000 min  
 Exp R.T. : 5.904 min  
 Response: 0  
 Conc: N.D.



#16 4,4'-DDD

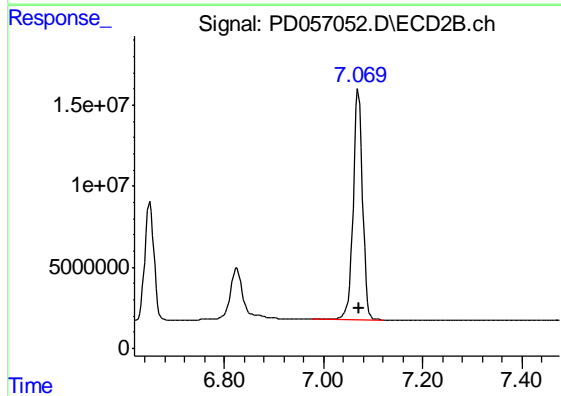
R.T.: 6.825 min  
 Delta R.T.: 0.053 min  
 Response: 57094427  
 Conc: 30.91 ng/ml



#17 4,4'-DDT

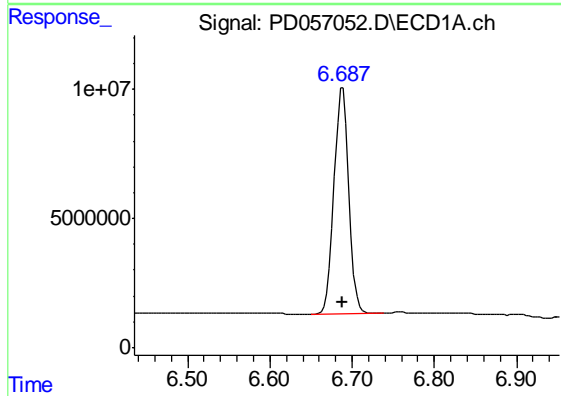
R.T.: 6.140 min  
Delta R.T.: 0.000 min  
Response: 88175686  
Conc: 102.66 ng/ml

Instrument :  
ECD\_D  
ClientSampleId :  
PEM51



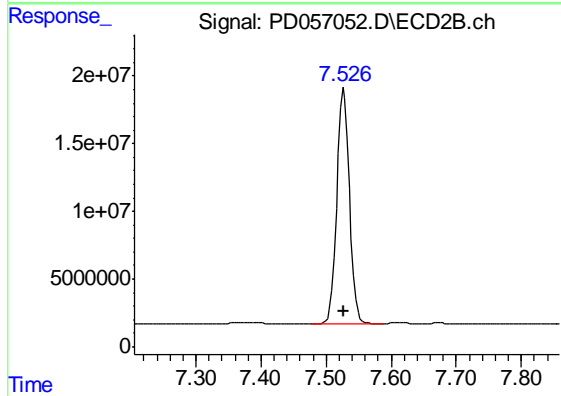
#17 4,4'-DDT

R.T.: 7.070 min  
Delta R.T.: 0.000 min  
Response: 186920766  
Conc: 96.15 ng/ml



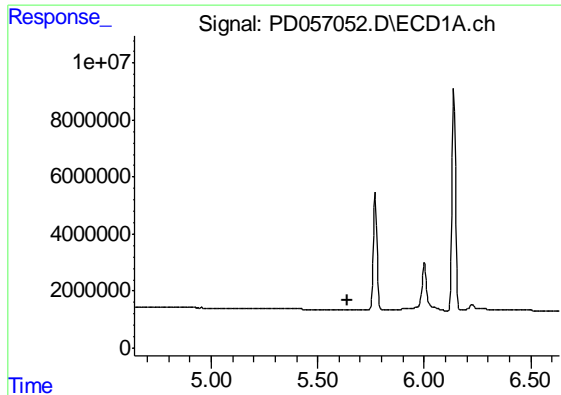
#20 Methoxychlor

R.T.: 6.688 min  
Delta R.T.: 0.000 min  
Response: 108858924  
Conc: 233.04 ng/ml



#20 Methoxychlor

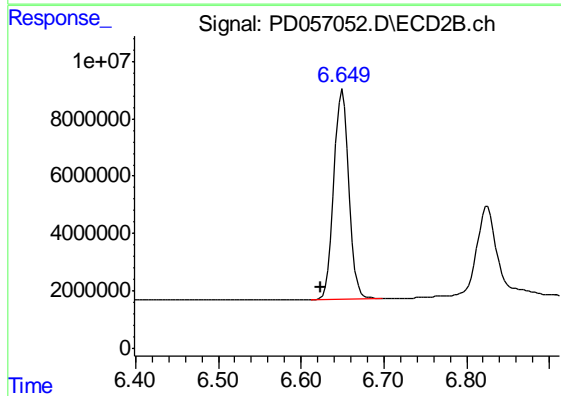
R.T.: 7.527 min  
Delta R.T.: 0.000 min  
Response: 234282055  
Conc: 232.14 ng/ml



#23 Toxaphene-2

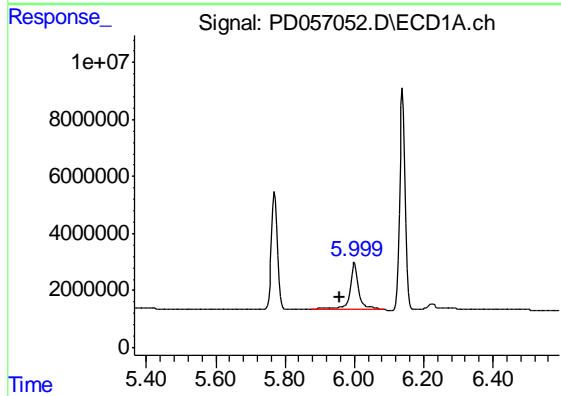
R.T.: 0.000 min  
Exp R.T. : 5.637 min  
Response: 0  
Conc: N.D.

Instrument :  
ECD\_D  
ClientSampled :  
PEM51



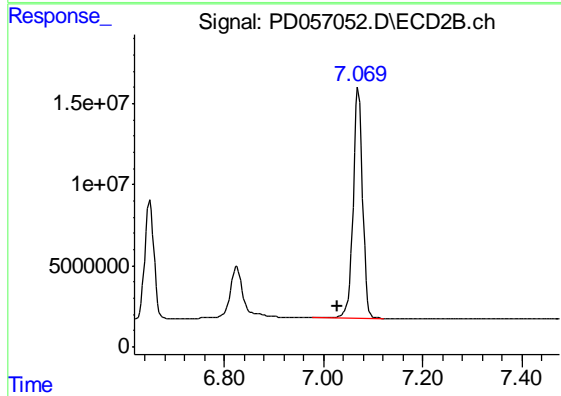
#23 Toxaphene-2

R.T.: 6.650 min  
Delta R.T.: 0.026 min  
Response: 92180283  
Conc: 6649.94 ng/ml



#24 Toxaphene-3

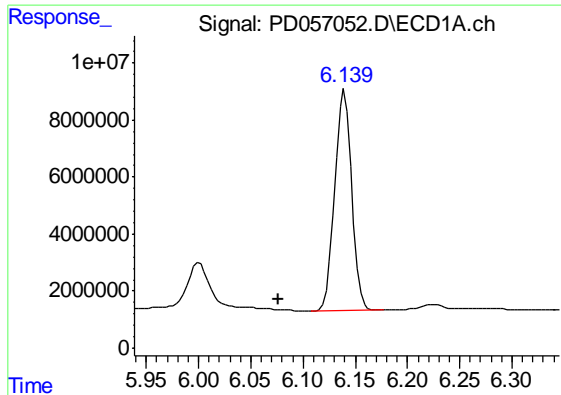
R.T.: 6.001 min  
Delta R.T.: 0.043 min  
Response: 28924273  
Conc: 4790.57 ng/ml



#24 Toxaphene-3

R.T.: 7.070 min  
Delta R.T.: 0.042 min  
Response: 186920766  
Conc: 8662.01 ng/ml

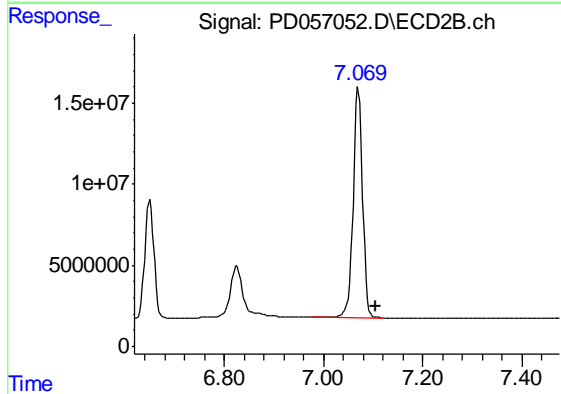




#25 Toxaphene-4

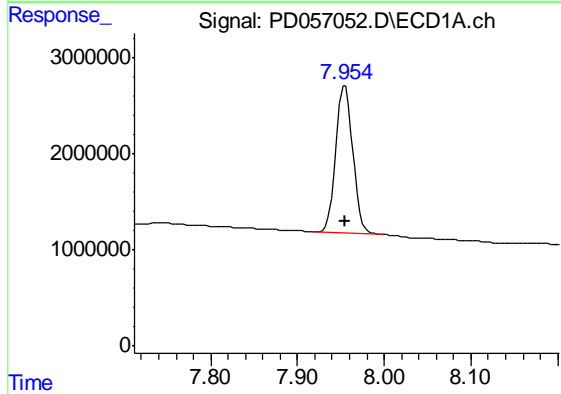
R.T.: 6.140 min  
 Delta R.T.: 0.063 min  
 Response: 88175686  
 Conc: 4979.39 ng/ml

Instrument :  
 ECD\_D  
 ClientSampleId :  
 PEM51



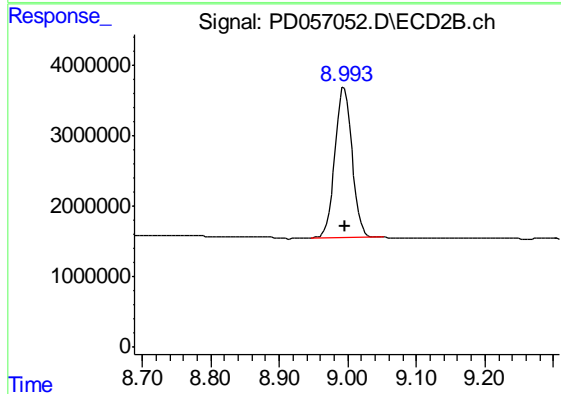
#25 Toxaphene-4

R.T.: 7.070 min  
 Delta R.T.: -0.035 min  
 Response: 186920766  
 Conc: 3585.89 ng/ml



#27 Decachlorobiphenyl

R.T.: 7.955 min  
 Delta R.T.: 0.000 min  
 Response: 21050695  
 Conc: 19.34 ng/ml



#27 Decachlorobiphenyl

R.T.: 8.995 min  
 Delta R.T.: 0.000 min  
 Response: 37217568  
 Conc: 19.92 ng/ml