

Data Path : Z:\pestpcbsrv\HPCHEM1\ECD_D\Data\PD012323\
 Data File : PD073709.D
 Signal(s) : Signal #1: ECD1A.ch Signal #2: ECD2B.ch
 Acq On : 23 Jan 2023 14:02
 Operator : AR\AJ
 Sample : 01229-01
 Misc :
 ALS Vial : 5 Sample Multiplier: 1

Instrument :
 ECD_D
 ClientSampleId :
 OK-02-011923

Integration File signal 1: autoint1.e
 Integration File signal 2: autoint2.e
 Quant Time: Jan 23 20:53:52 2023
 Quant Method : Z:\pestpcbsrv\HPCHEM1\ECD_D\Method\PD011823.M
 Quant Title : GC Extractables
 QLast Update : Thu Jan 19 02:45:26 2023
 Response via : Initial Calibration
 Integrator: ChemStation

Volume Inj. : 2 µl
 Signal #1 Phase : ZB-MR1 Signal #2 Phase: ZB-MR2
 Signal #1 Info : 30M x 0.32mm x0.5 Signal #2 Info : 30M x 0.32mm x 0.25µm

Compound	RT#1	RT#2	Resp#1	Resp#2	ng/ml	ng/ml

System Monitoring Compounds						
1) SA Tetrachlo...	3.562	2.776	20424883	13152093	8.738	10.331
28) SA Decachlor...	9.118f	7.938	24003592	9111665	8.518	7.832

Target Compounds

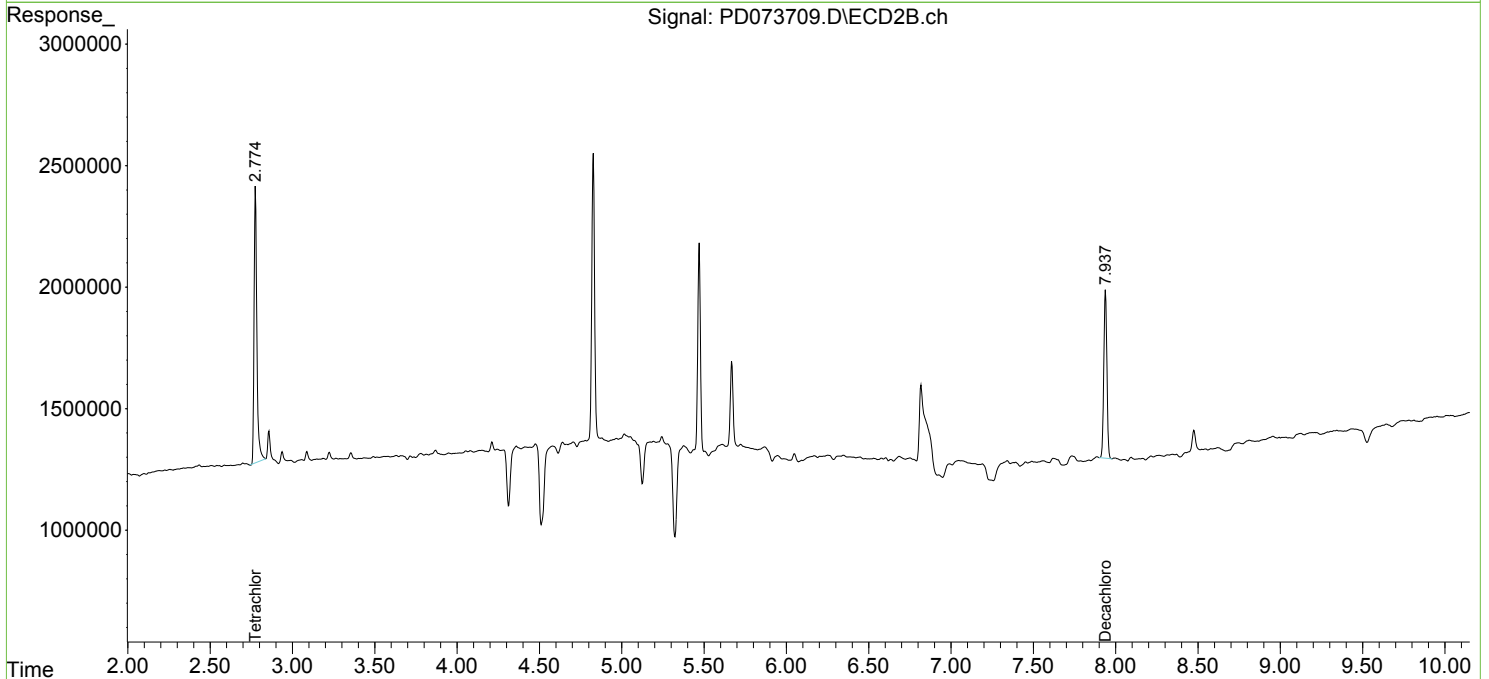
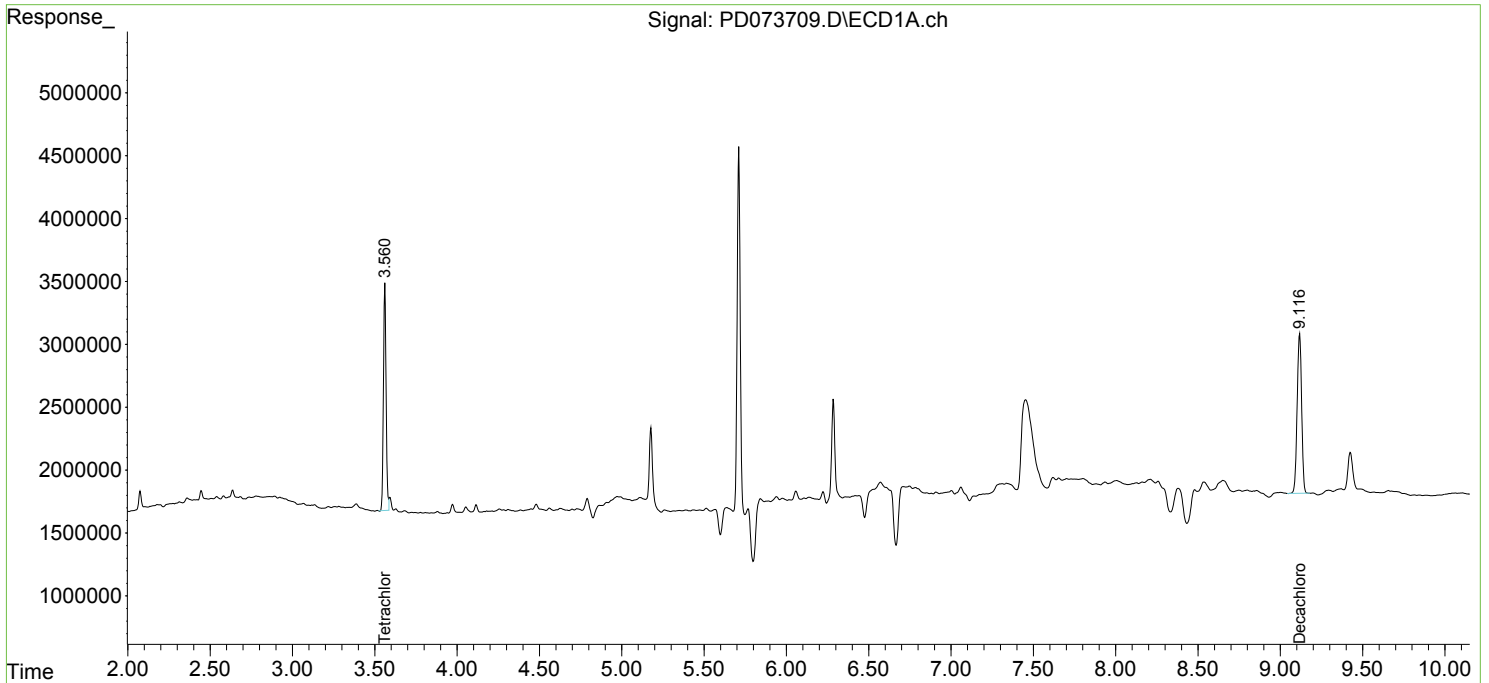
(f)=RT Delta > 1/2 Window (#)=Amounts differ by > 25% (m)=manual int.

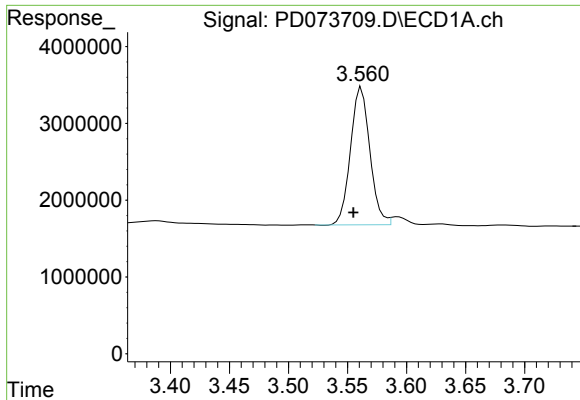
Data Path : Z:\pestpcbsrv\HPCHEM1\ECD_D\Data\PD012323\
 Data File : PD073709.D
 Signal(s) : Signal #1: ECD1A.ch Signal #2: ECD2B.ch
 Acq On : 23 Jan 2023 14:02
 Operator : AR\AJ
 Sample : 01229-01
 Misc :
 ALS Vial : 5 Sample Multiplier: 1

Instrument :
 ECD_D
 ClientSampleId :
 OK-02-011923

Integration File signal 1: autoint1.e
 Integration File signal 2: autoint2.e
 Quant Time: Jan 23 20:53:52 2023
 Quant Method : Z:\pestpcbsrv\HPCHEM1\ECD_D\Method\PD011823.M
 Quant Title : GC Extractables
 QLast Update : Thu Jan 19 02:45:26 2023
 Response via : Initial Calibration
 Integrator: ChemStation

Volume Inj. : 2 µl
 Signal #1 Phase : ZB-MR1 Signal #2 Phase: ZB-MR2
 Signal #1 Info : 30M x 0.32mm x0.5 Signal #2 Info : 30M x 0.32mm x 0.25µm

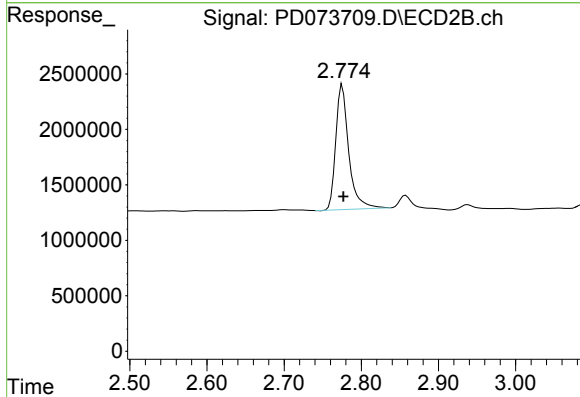




#1 Tetrachloro-m-xylene

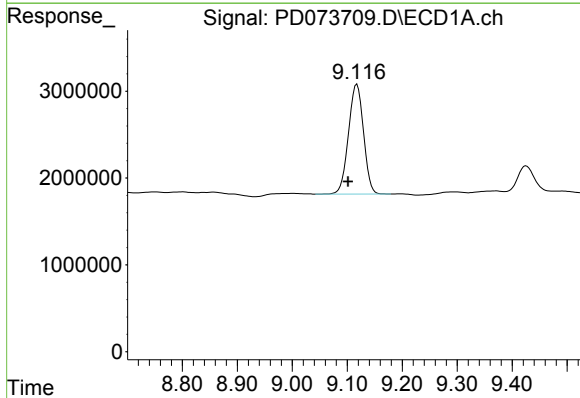
R.T.: 3.562 min
 Delta R.T.: 0.007 min
 Response: 20424883
 Conc: 8.74 ng/ml

Instrument :
 ECD_D
 ClientSampleId :
 OK-02-011923



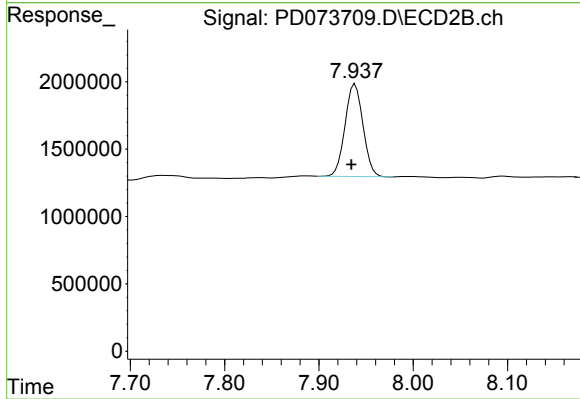
#1 Tetrachloro-m-xylene

R.T.: 2.776 min
 Delta R.T.: -0.001 min
 Response: 13152093
 Conc: 10.33 ng/ml



#28 Decachlorobiphenyl

R.T.: 9.118 min
 Delta R.T.: 0.016 min
 Response: 24003592
 Conc: 8.52 ng/ml



#28 Decachlorobiphenyl

R.T.: 7.938 min
 Delta R.T.: 0.004 min
 Response: 9111665
 Conc: 7.83 ng/ml