

Data Path : Z:\pestpcbsrv\HPCHEM1\ECD_D\Data\PD012323\
 Data File : PD073710.D
 Signal(s) : Signal #1: ECD1A.ch Signal #2: ECD2B.ch
 Acq On : 23 Jan 2023 14:15
 Operator : AR\AJ
 Sample : 01237-01
 Misc :
 ALS Vial : 6 Sample Multiplier: 1

Instrument :
 ECD_D
ClientSampleId :
 COMP-1-2-3A

Integration File signal 1: autoint1.e
 Integration File signal 2: autoint2.e
 Quant Time: Jan 23 20:55:10 2023
 Quant Method : Z:\pestpcbsrv\HPCHEM1\ECD_D\Method\PD011823.M
 Quant Title : GC Extractables
 QLast Update : Thu Jan 19 02:45:26 2023
 Response via : Initial Calibration
 Integrator: ChemStation

Volume Inj. : 2 µl
 Signal #1 Phase : ZB-MR1 Signal #2 Phase: ZB-MR2
 Signal #1 Info : 30M x 0.32mm x0.5 Signal #2 Info : 30M x 0.32mm x 0.25µm

Compound	RT#1	RT#2	Resp#1	Resp#2	ng/ml	ng/ml

System Monitoring Compounds						
1) SA Tetrachlo...	3.556	2.777	46957360	25994250	20.089	20.419
28) SA Decachlor...	9.109	7.936	45340055	20086246	16.089	17.264

Target Compounds

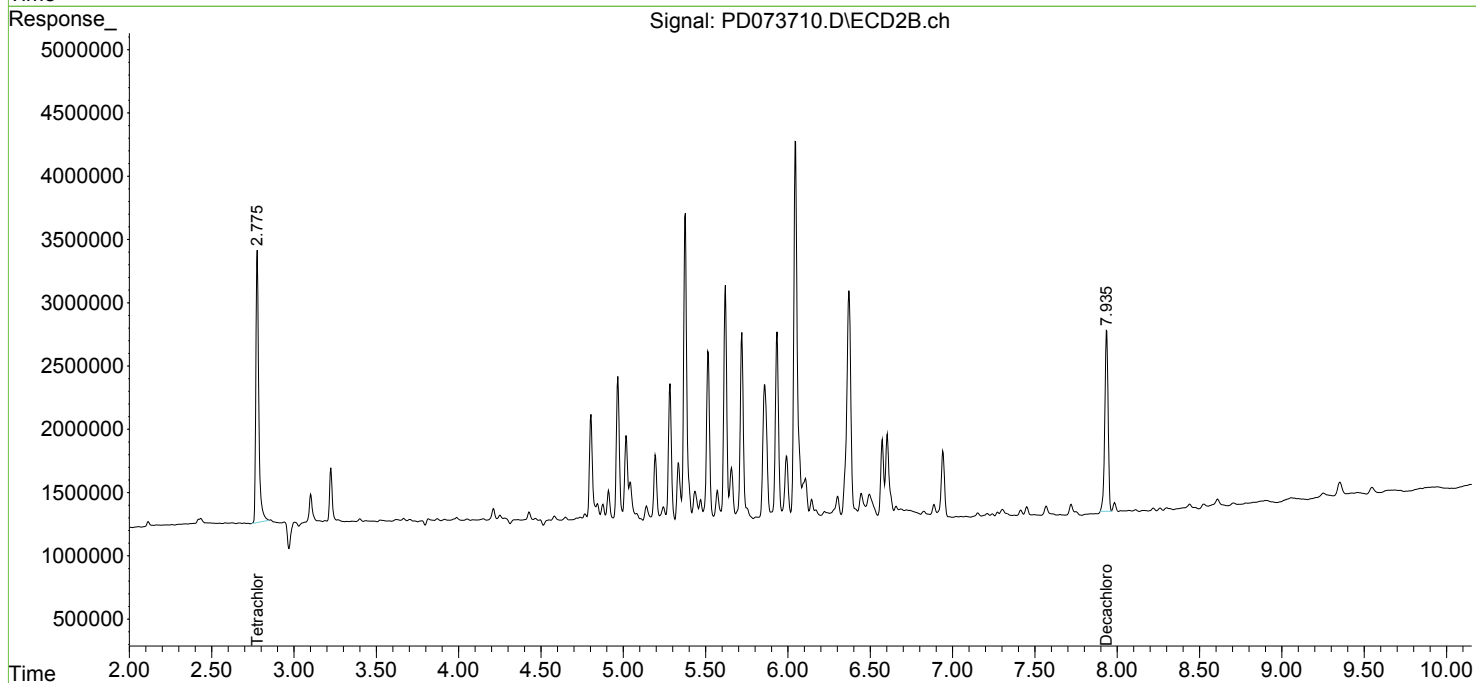
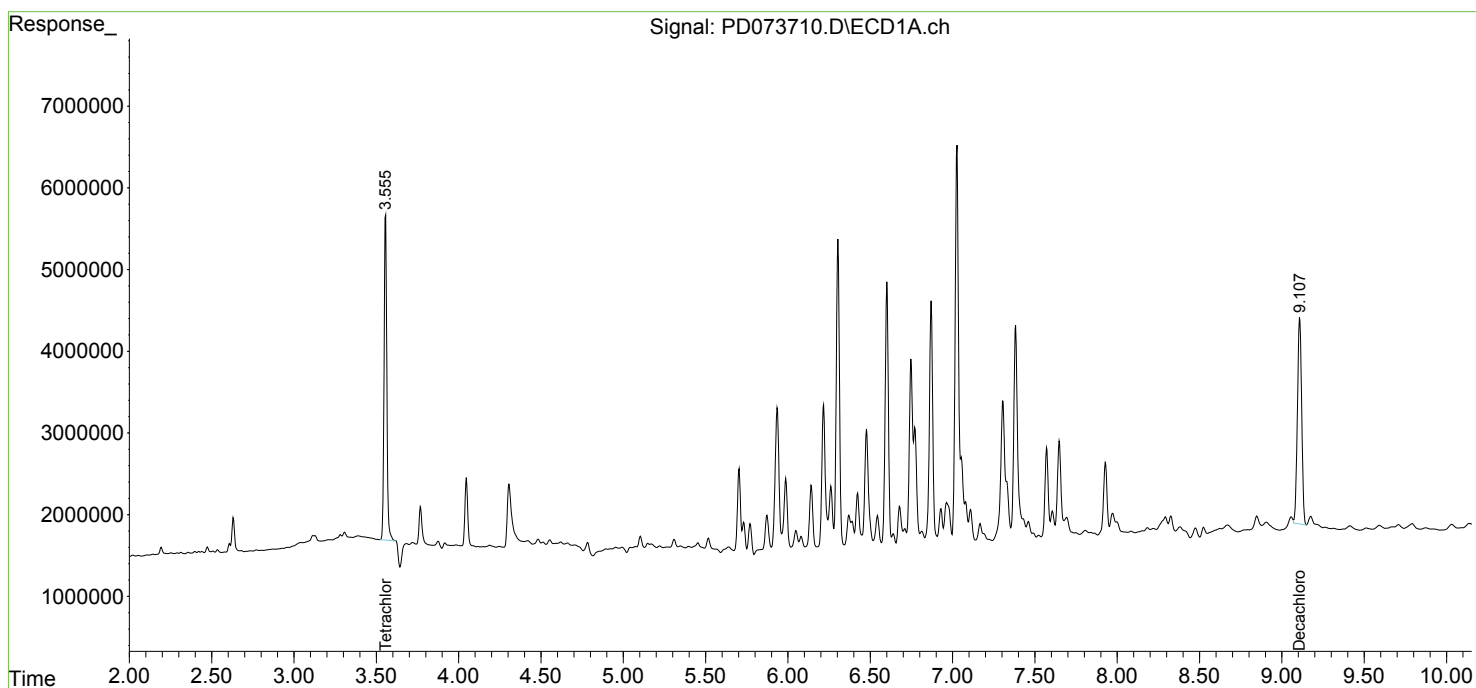
 (f)=RT Delta > 1/2 Window (#)=Amounts differ by > 25% (m)=manual int.

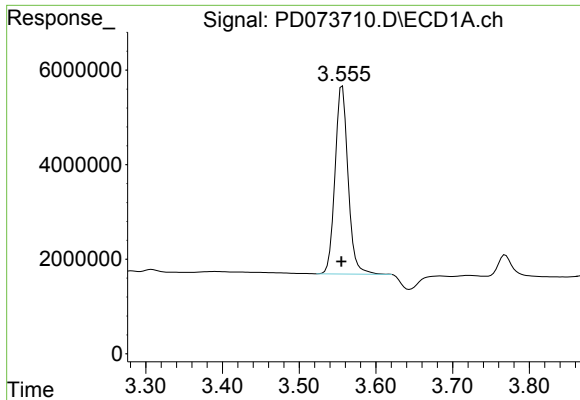
Data Path : Z:\pestpcbsrv\HPCHEM1\ECD_D\Data\PD012323\
 Data File : PD073710.D
 Signal(s) : Signal #1: ECD1A.ch Signal #2: ECD2B.ch
 Acq On : 23 Jan 2023 14:15
 Operator : AR\AJ
 Sample : 01237-01
 Misc :
 ALS Vial : 6 Sample Multiplier: 1

Instrument :
 ECD_D
 ClientSampleId :
 COMP-1-2-3A

Integration File signal 1: autoint1.e
 Integration File signal 2: autoint2.e
 Quant Time: Jan 23 20:55:10 2023
 Quant Method : Z:\pestpcbsrv\HPCHEM1\ECD_D\Method\PD011823.M
 Quant Title : GC Extractables
 QLast Update : Thu Jan 19 02:45:26 2023
 Response via : Initial Calibration
 Integrator: ChemStation

Volume Inj. : 2 µl
 Signal #1 Phase : ZB-MR1 Signal #2 Phase: ZB-MR2
 Signal #1 Info : 30M x 0.32mm x 0.5 Signal #2 Info : 30M x 0.32mm x 0.25µm

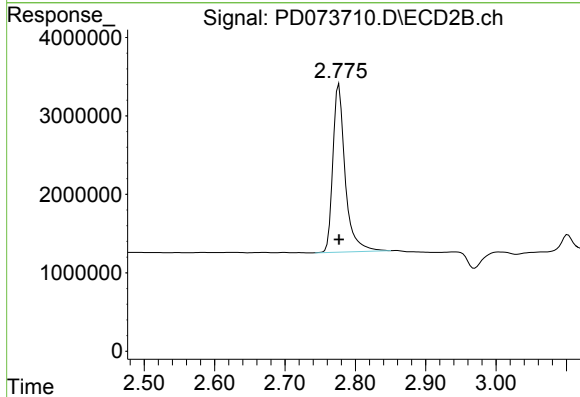




#1 Tetrachloro-m-xylene

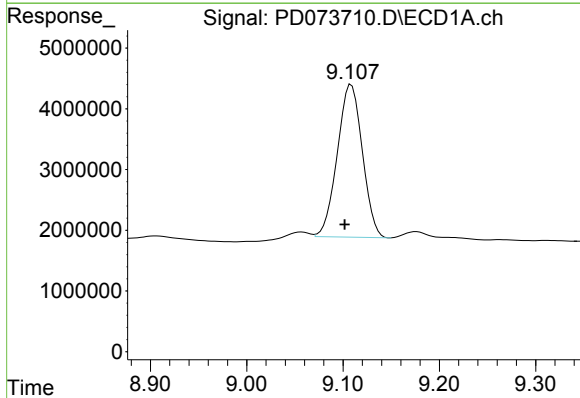
R.T.: 3.556 min
 Delta R.T.: 0.001 min
 Response: 46957360
 Conc: 20.09 ng/ml

Instrument :
 ECD_D
 ClientSampleId :
 COMP-1-2-3A



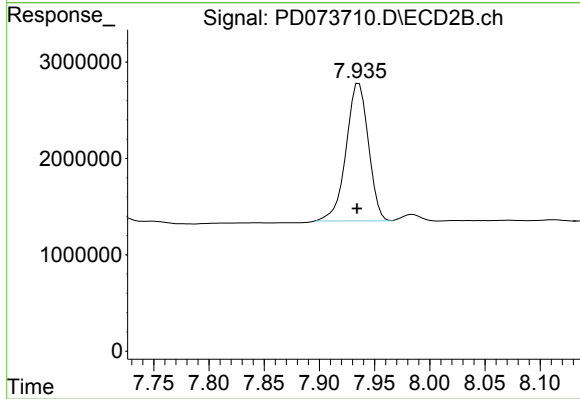
#1 Tetrachloro-m-xylene

R.T.: 2.777 min
 Delta R.T.: 0.000 min
 Response: 25994250
 Conc: 20.42 ng/ml



#28 Decachlorobiphenyl

R.T.: 9.109 min
 Delta R.T.: 0.007 min
 Response: 45340055
 Conc: 16.09 ng/ml



#28 Decachlorobiphenyl

R.T.: 7.936 min
 Delta R.T.: 0.002 min
 Response: 20086246
 Conc: 17.26 ng/ml