

Data Path : Z:\pestpcbsrv\HPCHEM1\ECD_D\Data\PD012419\
 Data File : PD051196.D
 Signal(s) : Signal #1: ECD1A.CH Signal #2: ECD2B.CH
 Acq On : 24 Jan 2019 10:54
 Operator : AJ\SJ
 Sample : RESC34
 Misc :
 ALS Vial : 2 Sample Multiplier: 1

Instrument :
 ECD_D
 ClientSampleId :

Integration File signal 1: autoint1.e
 Integration File signal 2: autoint2.e
 Quant Time: Jan 25 03:33:43 2019
 Quant Method : Z:\pestpcbsrv\HPCHEM1\ECD_D\Method\PD012419CLP.M
 Quant Title : GC Extractables
 QLast Update : Fri Jan 25 03:30:04 2019
 Response via : Initial Calibration
 Integrator: ChemStation 6890 Scale Mode: Large solvent peaks clipped

Volume Inj. : 1 µl
 Signal #1 Phase : ZB-MR2 Signal #2 Phase: ZB-MR1
 Signal #1 Info : 30M x 0.32mm x0.2 Signal #2 Info : 30M x 0.32mm x 0.50µm

Compound	RT#1	RT#2	Resp#1	Resp#2	ng/ml	ng/ml

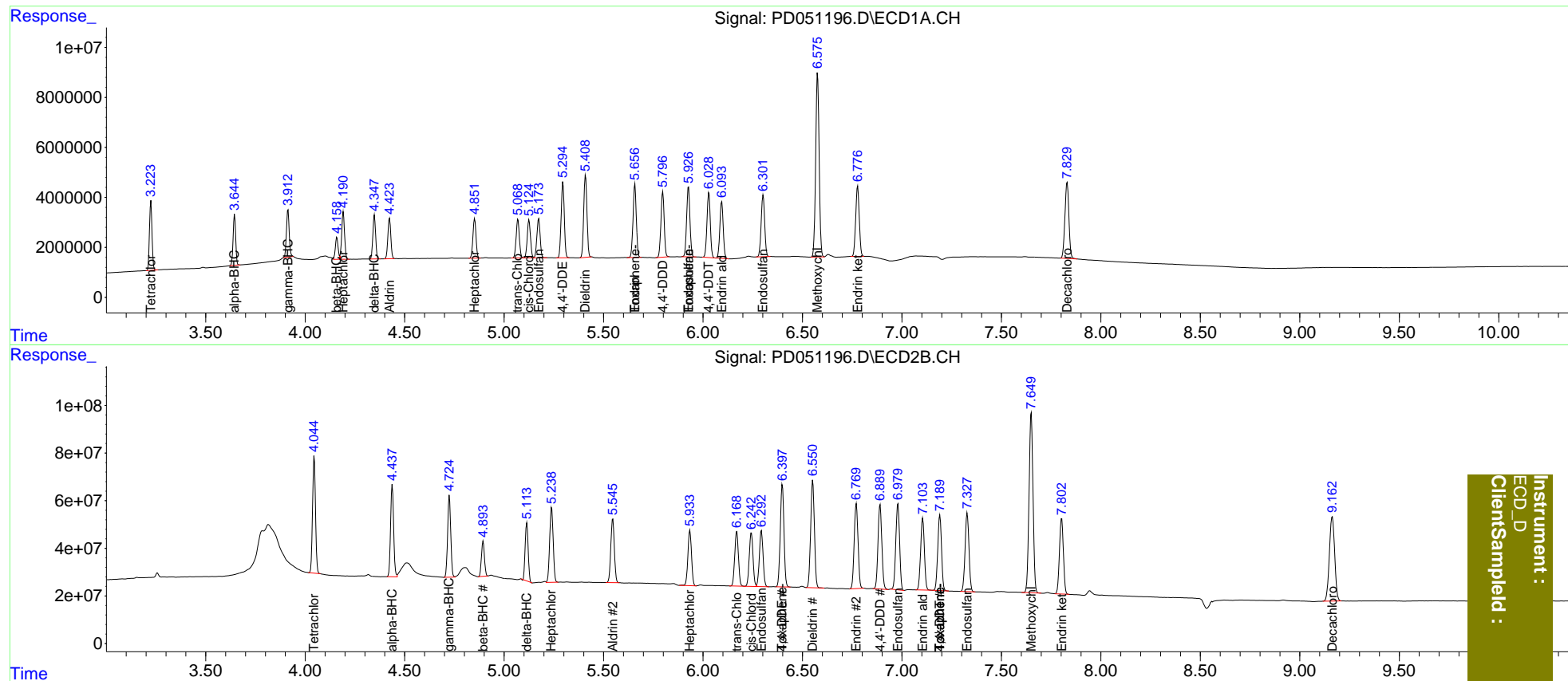
System Monitoring Compounds						
1) SA Tetrachlo...	3.225	4.045	24552367	508.2E6	17.595	17.823
27) SA Decachlor...	7.831	9.163	42136993	656.1E6	34.490	35.278
Target Compounds						
2) A alpha-BHC	3.645	4.438	17957624	412.0E6	8.320	9.480
3) MA gamma-BHC...	3.914	4.725	18465411	374.7E6	8.864	9.479
4) MA Heptachlor	4.192	5.239	19041642	383.1E6	8.844	9.520
5) MB Aldrin	4.424	5.546	16798750	332.4E6	8.240	9.029
6) B beta-BHC	4.159	4.895	8518395	155.5E6	9.089	8.424
7) B delta-BHC	4.348	5.115	16712067	254.5E6	7.839	7.077
8) B Heptachlo...	4.852	5.934	16949328	296.3E6	8.421	8.796
9) A Endosulfan I	5.174	6.294	17625699	304.8E6	9.040	9.730
10) B trans-Chl...	5.070	6.170	17387996	298.7E6	8.400	8.836
11) B cis-Chlor...	5.125	6.243	17275162	294.9E6	8.533	9.059
12) B 4,4'-DDE	5.296	6.399	32934177	551.3E6	16.159	17.800
13) MA Dieldrin	5.409	6.552	37219615	593.5E6	16.996	18.732
14) MA Endrin	5.658	6.771	33643035	478.9E6	17.147	18.849
15) B Endosulfa...	5.927	6.980	32599480	477.7E6	16.606	17.981
16) A 4,4'-DDD	5.798	6.890	29764676	473.0E6	17.370	18.958
17) MA 4,4'-DDT	6.030	7.191	30354875	418.3E6	16.879	18.317
18) B Endrin al...	6.094	7.105	26735673	396.1E6	17.259	18.161
19) B Endosulfa...	6.302	7.328	30293684	448.6E6	16.979	18.040
20) A Methoxychlor	6.576	7.650	89287526	1051.5E6	89.982	95.509
21) B Endrin ke...	6.778	7.803	35172426	435.2E6	17.790	18.246
22) Toxaphene-1	0.000	6.399	0	551.3E6	N.D.	3846.003
23) Toxaphene-2	5.658	0.000	33643035	0	1578.040	N.D. #
24) Toxaphene-3	5.927	7.191	32599480	418.3E6	913.045	1818.826 #
25) Toxaphene-4	0.000	7.191	0	418.3E6	N.D.	655.165

(f)=RT Delta > 1/2 Window (#)=Amounts differ by > 25% (m)=manual int.

Data Path : Z:\pestpcbsrv\HPCHEM1\ECD_D\Data\PD012419\
 Data File : PD051196.D
 Signal(s) : Signal #1: ECD1A.CH Signal #2: ECD2B.CH
 Acq On : 24 Jan 2019 10:54
 Operator : AJ\SJ
 Sample : RESC34
 Misc :
 ALS Vial : 2 Sample Multiplier: 1

Integration File signal 1: autoint1.e
 Integration File signal 2: autoint2.e
 Quant Time: Jan 25 03:33:43 2019
 Quant Method : Z:\pestpcbsrv\HPCHEM1\ECD_D\Method\PD012419CLP.M
 Quant Title : GC Extractables
 QLast Update : Fri Jan 25 03:30:04 2019
 Response via : Initial Calibration
 Integrator: ChemStation 6890 Scale Mode: Large solvent peaks clipped

Volume Inj. : 1 µl
 Signal #1 Phase : ZB-MR2 Signal #2 Phase: ZB-MR1
 Signal #1 Info : 30M x 0.32mm x0.2 Signal #2 Info : 30M x 0.32mm x 0.50µm



Instrument :
 ECD_D
 ClientSampleId :