

Data Path : Z:\pestpcbsrv\HPCHEM1\ECD\_D\Data\PD012419\  
 Data File : PD051198.D  
 Signal(s) : Signal #1: ECD1A.CH Signal #2: ECD2B.CH  
 Acq On : 24 Jan 2019 11:21  
 Operator : AJ\SJ  
 Sample : TOXAPH101  
 Misc :  
 ALS Vial : 4 Sample Multiplier: 1

Instrument :  
 ECD\_D  
 ClientSampleId :  
 TOXAPH101

Integration File signal 1: autoint1.e  
 Integration File signal 2: autoint2.e  
 Quant Time: Jan 25 02:26:17 2019  
 Quant Method : Z:\pestpcbsrv\HPCHEM1\ECD\_D\Method\PD012419CLP.M  
 Quant Title : GC Extractables  
 QLast Update : Fri Jan 25 02:22:50 2019  
 Response via : Initial Calibration  
 Integrator: ChemStation 6890 Scale Mode: Large solvent peaks clipped

Volume Inj. : 1 µl  
 Signal #1 Phase : ZB-MR2 Signal #2 Phase: ZB-MR1  
 Signal #1 Info : 30M x 0.32mm x0.2 Signal #2 Info : 30M x 0.32mm x 0.50µm

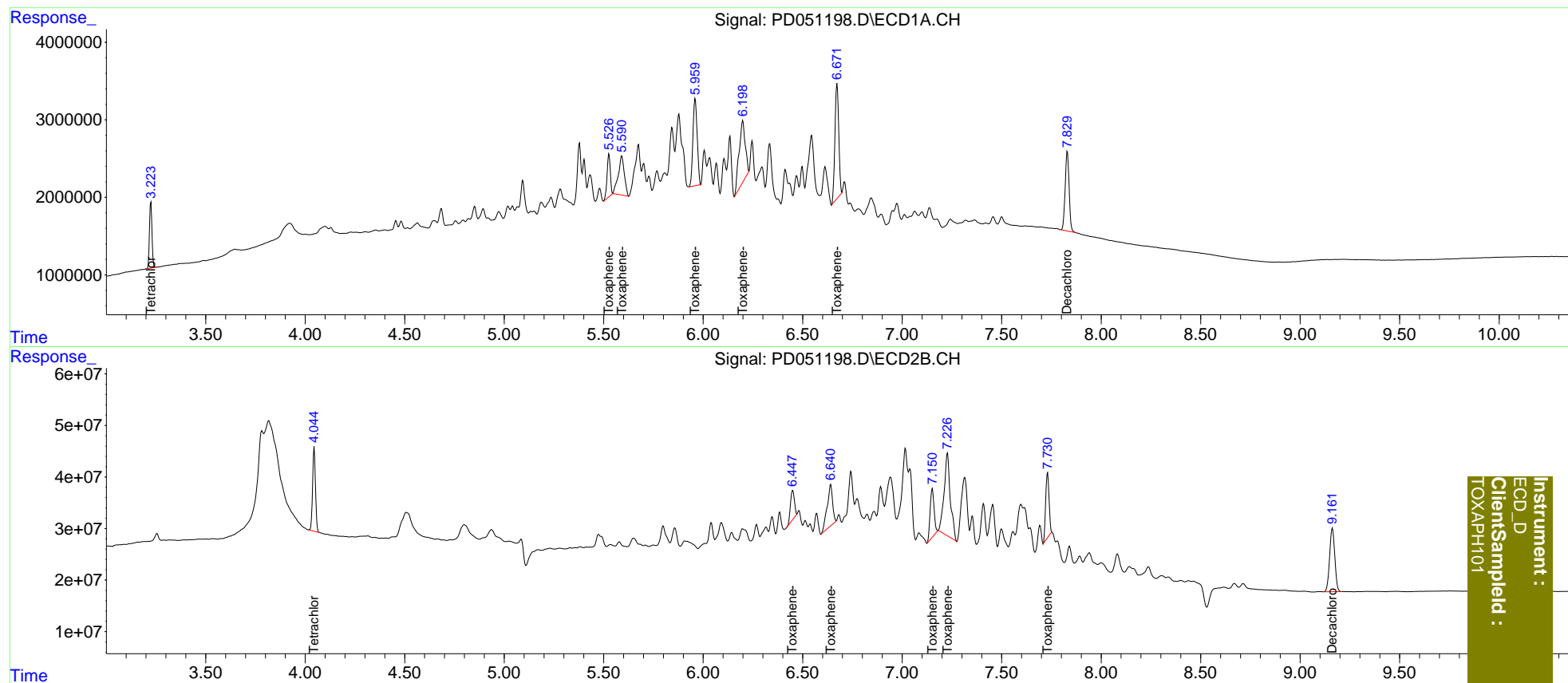
Compound	RT#1	RT#2	Resp#1	Resp#2	ng/ml	ng/ml
-----						
System Monitoring Compounds						
1) SA Tetrachlo...	3.225	4.045	7545834	165.0E6	5.168	5.569
27) SA Decachlor...	7.830	9.162	14174166	222.7E6	11.276	11.628
Target Compounds						
22) Toxaphene-1	5.527	6.450	6173557	81514356	497.292	568.694
23) Toxaphene-2	5.591	6.641	10705058	149.8E6	502.125	556.374
24) Toxaphene-3	5.960	7.152	16585465	128.2E6	464.525	557.540
25) Toxaphene-4	6.199	7.228	16980007	350.0E6	467.085	548.236
26) Toxaphene-5	6.673	7.731	19646545	149.7E6	473.540	560.736
-----						

(f)=RT Delta > 1/2 Window (#)=Amounts differ by > 25% (m)=manual int.

Data Path : Z:\pestpcbsrv\HPCHEM1\ECD\_D\Data\PD012419\  
 Data File : PD051198.D  
 Signal(s) : Signal #1: ECD1A.CH Signal #2: ECD2B.CH  
 Acq On : 24 Jan 2019 11:21  
 Operator : AJ\SJ  
 Sample : TOXAPH101  
 Misc :  
 ALS Vial : 4 Sample Multiplier: 1

Integration File signal 1: autoint1.e  
 Integration File signal 2: autoint2.e  
 Quant Time: Jan 25 02:26:17 2019  
 Quant Method : Z:\pestpcbsrv\HPCHEM1\ECD\_D\Method\PD012419CLP.M  
 Quant Title : GC Extractables  
 QLast Update : Fri Jan 25 02:22:50 2019  
 Response via : Initial Calibration  
 Integrator: ChemStation 6890 Scale Mode: Large solvent peaks clipped

Volume Inj. : 1 µl  
 Signal #1 Phase : ZB-MR2 Signal #2 Phase: ZB-MR1  
 Signal #1 Info : 30M x 0.32mm x0.2 Signal #2 Info : 30M x 0.32mm x 0.50µm



Instrument :  
 ECD\_D  
 ClientSampleId :  
 TOXAPH101