

Data Path : Z:\pestpcbsrv\HPCHEM1\ECD_D\Data\PD012422\
 Data File : PD067783.D
 Signal(s) : Signal #1: ECD1A.ch Signal #2: ECD2B.ch
 Acq On : 24 Jan 2022 16:09
 Operator : AR\AJ
 Sample : PIBLK206
 Misc :
 ALS Vial : 2 Sample Multiplier: 1

Instrument :
 ECD_D
ClientSampleId :
 PIBLK207

Manual Integrations
APPROVED
 Reviewed By :Abdul Mirza 01/25/2022
 Supervised By :Ankita Jodhani 01/28/2022

Integration File signal 1: autoint1.e
 Integration File signal 2: autoint2.e
 Quant Time: Jan 25 09:37:37 2022
 Quant Method : Z:\pestpcbsrv\HPCHEM1\ECD_D\Method\PD122921CLP.M
 Quant Title : GC Extractables
 QLast Update : Tue Dec 28 14:32:50 2021
 Response via : Initial Calibration
 Integrator: ChemStation

Volume Inj. : 1 µl
 Signal #1 Phase : ZB-MR2 Signal #2 Phase: ZB-MR1
 Signal #1 Info : 30M x 0.32mm x0.2 Signal #2 Info : 30M x 0.32mm x 0.50µm

Compound	RT#1	RT#2	Resp#1	Resp#2	ng/ml	ng/ml

System Monitoring Compounds						
1) SA Tetrachlo...	3.431	3.959	40753290	153.7E6	17.987	18.958m
2) SA Decachlor...	8.152	9.014	32559408	175.3E6	33.995	34.685

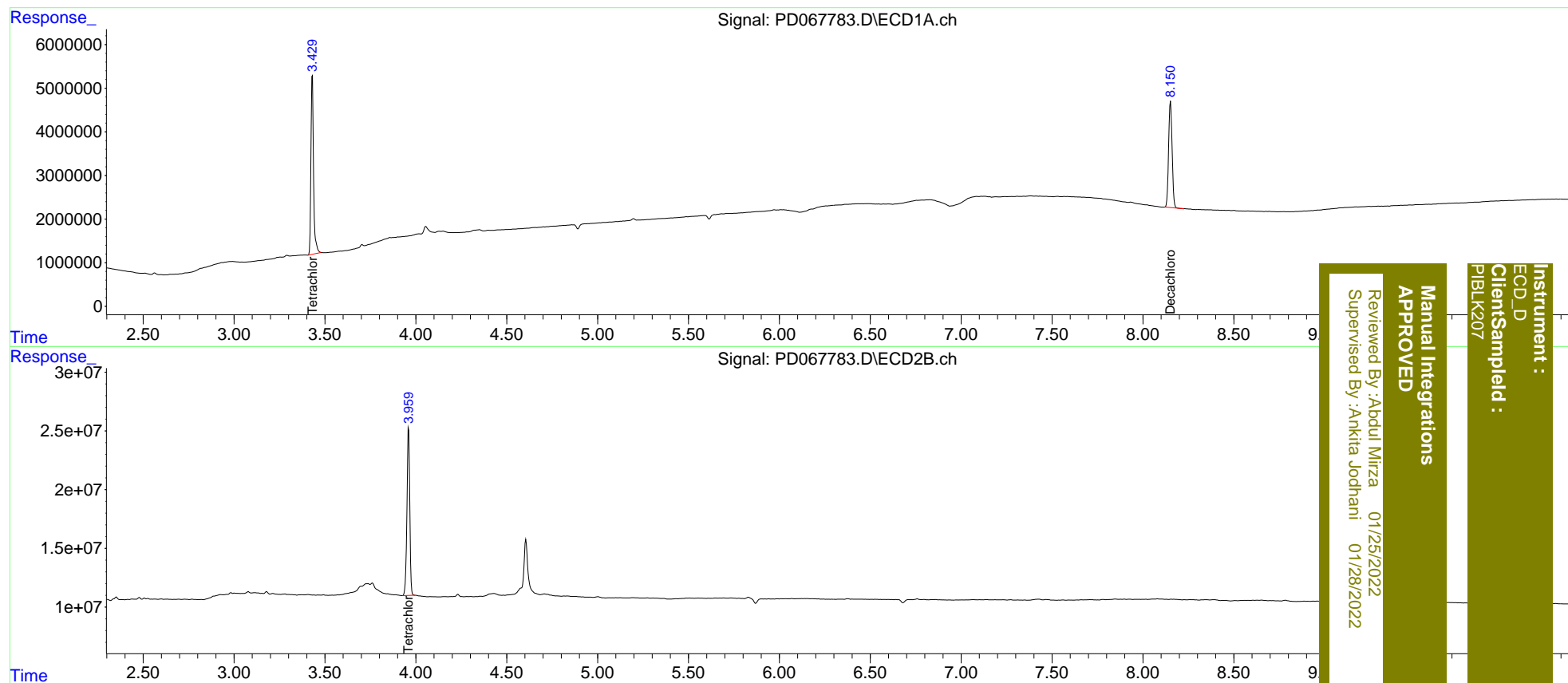
Target Compounds

 (f)=RT Delta > 1/2 Window (#)=Amounts differ by > 25% (m)=manual int.

Data Path : Z:\pestpcbsrv\HPCHEM1\ECD_D\Data\PD012422\
 Data File : PD067783.D
 Signal(s) : Signal #1: ECD1A.ch Signal #2: ECD2B.ch
 Acq On : 24 Jan 2022 16:09
 Operator : AR\AJ
 Sample : PIBLK206
 Misc :
 ALS Vial : 2 Sample Multiplier: 1

Integration File signal 1: autoint1.e
 Integration File signal 2: autoint2.e
 Quant Time: Jan 25 09:37:37 2022
 Quant Method : Z:\pestpcbsrv\HPCHEM1\ECD_D\Method\PD122921CLP.M
 Quant Title : GC Extractables
 QLast Update : Tue Dec 28 14:32:50 2021
 Response via : Initial Calibration
 Integrator: ChemStation

Volume Inj. : 1 µl
 Signal #1 Phase : ZB-MR2 Signal #2 Phase: ZB-MR1
 Signal #1 Info : 30M x 0.32mm x0.2 Signal #2 Info : 30M x 0.32mm x 0.50µm



Instrument : ECD_D
 ClientSampleId : PIBLK207
 Manual Integrations APPROVED
 Reviewed By :Abdul Mirza 01/25/2022
 Supervised By :Ankita Jodhani 01/28/2022