

Data Path : Z:\pestpcbsrv\HPCHEM1\ECD\_D\Data\PD012422\  
 Data File : PD067764.D  
 Signal(s) : Signal #1: ECD1A.ch Signal #2: ECD2B.ch  
 Acq On : 24 Jan 2022 11:46  
 Operator : AR\AJ  
 Sample : N1199-04  
 Misc :  
 ALS Vial : 9 Sample Multiplier: 1

**Instrument :**  
 ECD\_D  
**ClientSampleId :**  
 C0F25

**Manual Integrations**  
**APPROVED**  
 Reviewed By :Abdul Mirza 01/25/2022  
 Supervised By :Ankita Jodhani 01/28/2022

Integration File signal 1: autoint1.e  
 Integration File signal 2: autoint2.e  
 Quant Time: Jan 25 05:32:48 2022  
 Quant Method : Z:\pestpcbsrv\HPCHEM1\ECD\_D\Method\PD122921CLP.M  
 Quant Title : GC Extractables  
 QLast Update : Tue Dec 28 14:32:50 2021  
 Response via : Initial Calibration  
 Integrator: ChemStation

Volume Inj. : 1 µl  
 Signal #1 Phase : ZB-MR2 Signal #2 Phase: ZB-MR1  
 Signal #1 Info : 30M x 0.32mm x0.2 Signal #2 Info : 30M x 0.32mm x 0.50µm

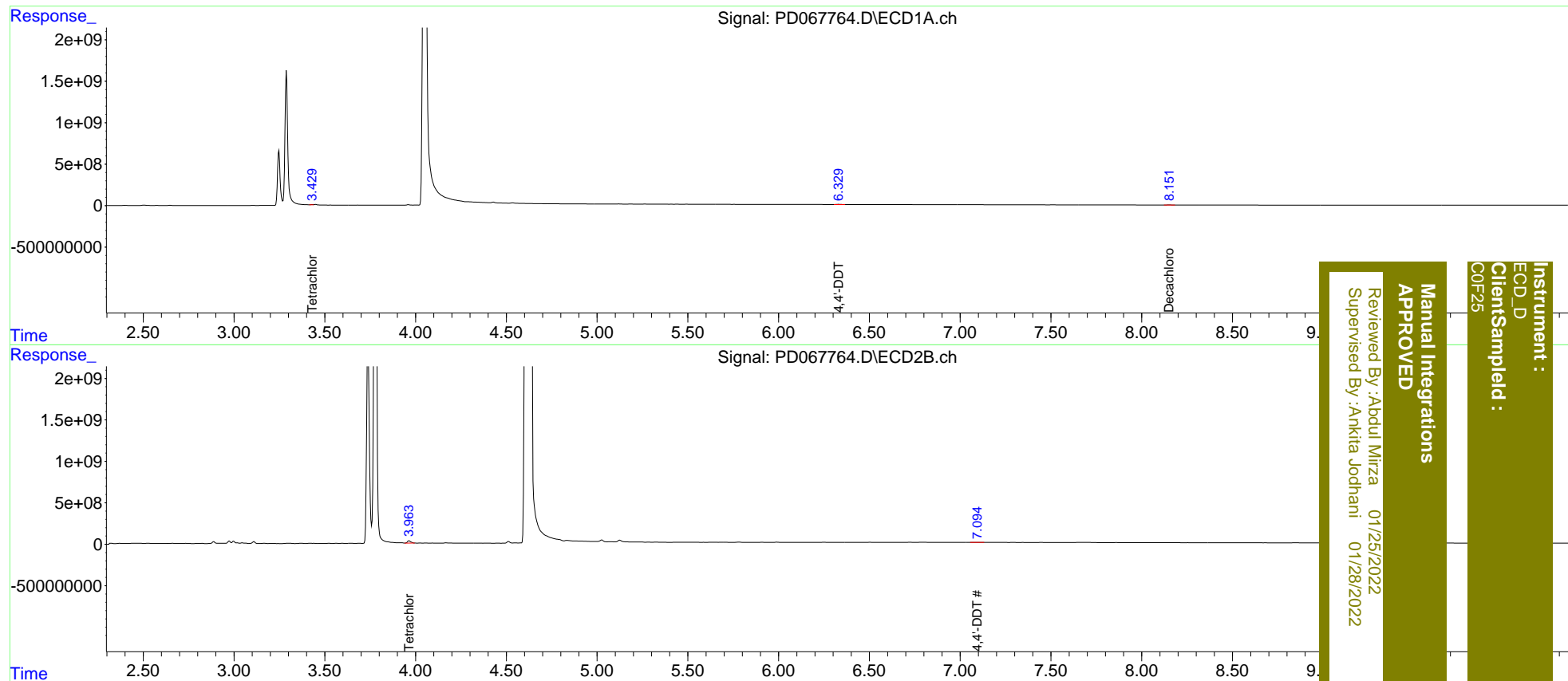
| Compound                    | RT#1  | RT#2  | Resp#1   | Resp#2   | ng/ml   | ng/ml    |
|-----------------------------|-------|-------|----------|----------|---------|----------|
| -----                       |       |       |          |          |         |          |
| System Monitoring Compounds |       |       |          |          |         |          |
| 1) SA Tetrachlo...          | 3.429 | 3.963 | 28746410 | 361.4E6  | 12.688m | 44.589m# |
| 2) SA Decachlor...          | 8.151 | 9.030 | 25263155 | 130.0E6  | 26.377m | 25.722m  |
| Target Compounds            |       |       |          |          |         |          |
| 17) MA 4,4'-DDT             | 6.331 | 7.095 | 22691996 | 13519027 | 11.019  | 2.327 #  |
| -----                       |       |       |          |          |         |          |

(f)=RT Delta > 1/2 Window (#)=Amounts differ by > 25% (m)=manual int.

Data Path : Z:\pestpcbsrv\HPCHEM1\ECD\_D\Data\PD012422\  
 Data File : PD067764.D  
 Signal(s) : Signal #1: ECD1A.ch Signal #2: ECD2B.ch  
 Acq On : 24 Jan 2022 11:46  
 Operator : AR\AJ  
 Sample : N1199-04  
 Misc :  
 ALS Vial : 9 Sample Multiplier: 1

Integration File signal 1: autoint1.e  
 Integration File signal 2: autoint2.e  
 Quant Time: Jan 25 05:32:48 2022  
 Quant Method : Z:\pestpcbsrv\HPCHEM1\ECD\_D\Method\PD122921CLP.M  
 Quant Title : GC Extractables  
 QLast Update : Tue Dec 28 14:32:50 2021  
 Response via : Initial Calibration  
 Integrator: ChemStation

Volume Inj. : 1 µl  
 Signal #1 Phase : ZB-MR2 Signal #2 Phase: ZB-MR1  
 Signal #1 Info : 30M x 0.32mm x0.2 Signal #2 Info : 30M x 0.32mm x 0.50µm

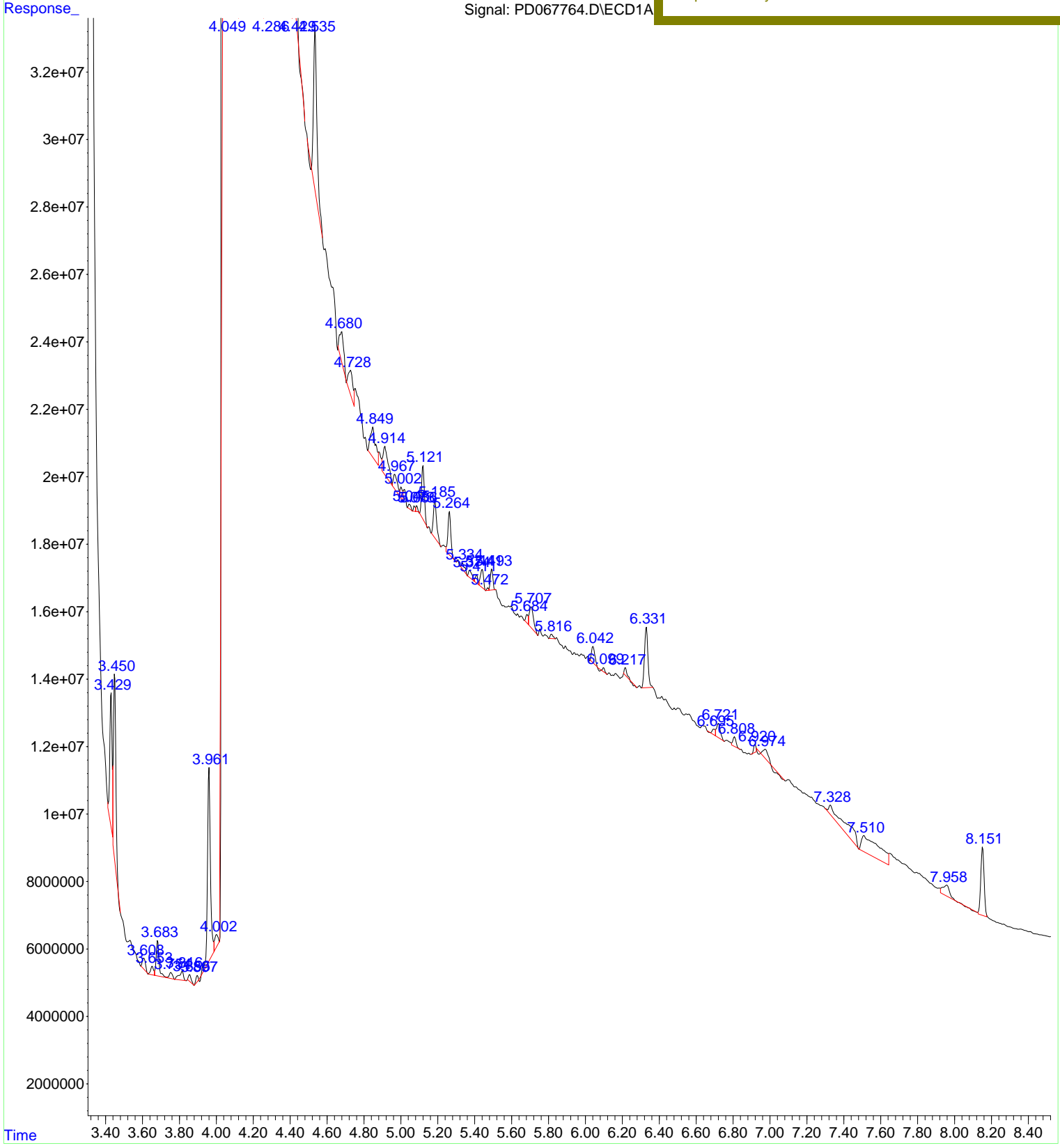


**Instrument :**  
 ECD\_D  
**ClientSampleId :**  
 C0F25  
**Manual Integrations**  
**APPROVED**  
 Reviewed By :Abdul Mirza 01/25/2022  
 Supervised By :Ankita Jodhani 01/28/2022

File : Z:\pestpcbsrv\HPCHEM1\ECD\_D\Data\PD012422\PD067764.D  
Operator : AR\AJ  
Acquired : 24 Jan 2022 11:46 using AcqMethod ECD\_D.M  
Instrument : ECD\_D  
Sample Name: N1199-04  
Misc Info :  
Vial Number: 9

Instrument :  
ECD\_D  
ClientSampleId :  
C0F25

Manual Integrations  
**APPROVED**  
Reviewed By : Abdul Mirza 01/25/2022  
Supervised By : Ankita Jodhani 01/28/2022



File :Z:\pestpcbsrv\HPCHEM1\ECD\_D\Data\PD012422\PD067764.D  
Operator : AR\AJ  
Acquired : 24 Jan 2022 11:46 using AcqMethod ECD\_D.M  
Instrument : ECD\_D  
Sample Name: N1199-04  
Misc Info :  
Vial Number: 9

Instrument :  
ECD\_D  
ClientSampleId :  
C0F25

Manual Integrations  
**APPROVED**  
Reviewed By :Abdul Mirza 01/25/2022  
Supervised By :Ankita Jodhani 01/28/2022

