

Data Path : Z:\pestpcbsrv\HPCHEM1\ECD_D\Data\PD012422\
 Data File : PD067785.D
 Signal(s) : Signal #1: ECD1A.ch Signal #2: ECD2B.ch
 Acq On : 24 Jan 2022 16:43
 Operator : AR\AJ
 Sample : INDB362
 Misc :
 ALS Vial : 29 Sample Multiplier: 1

Instrument :
 ECD_D
 ClientSampleId :
 INDB3115

Manual Integrations
APPROVED

Reviewed By :Abdul Mirza 01/25/2022
 Supervised By :Ankita Jodhani 01/28/2022

Integration File signal 1: autoint1.e
 Integration File signal 2: autoint2.e
 Quant Time: Jan 25 05:38:37 2022
 Quant Method : Z:\pestpcbsrv\HPCHEM1\ECD_D\Method\PD122921CLP.M
 Quant Title : GC Extractables
 QLast Update : Tue Dec 28 14:32:50 2021
 Response via : Initial Calibration
 Integrator: ChemStation

Volume Inj. : 1 µl
 Signal #1 Phase : ZB-MR2 Signal #2 Phase: ZB-MR1
 Signal #1 Info : 30M x 0.32mm x0.2 Signal #2 Info : 30M x 0.32mm x 0.50µm

	Compound	RT#1	RT#2	Resp#1	Resp#2	ng/ml	ng/ml

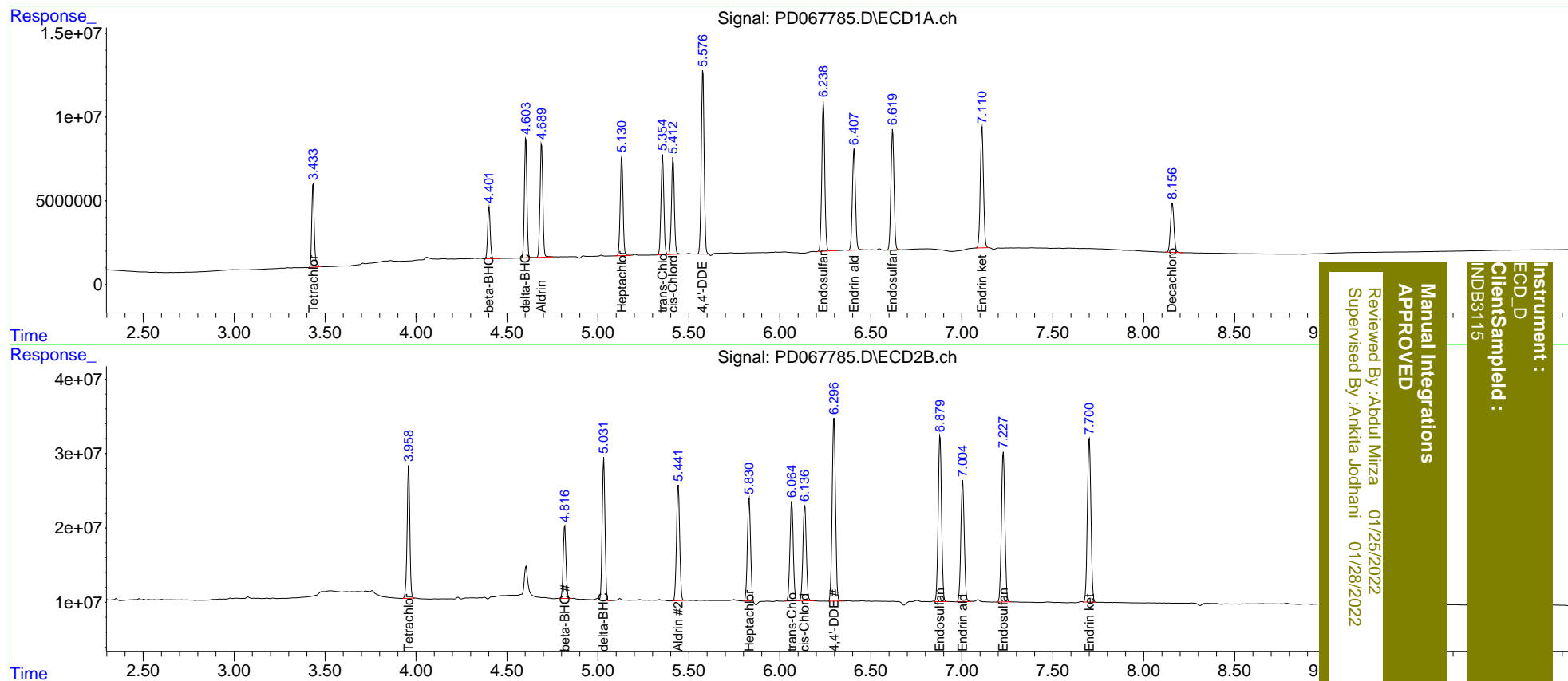
System Monitoring Compounds							
1)	SA Tetrachlo...	3.434	3.958	48450285	185.4E6	21.385	22.878m
27)	SA Decachlor...	8.158	9.017	39476062	214.6E6	41.217	42.464
Target Compounds							
5)	MB Aldrin	4.691	5.442	72575743	188.8E6	23.213	22.518
6)	B beta-BHC	4.402	4.818	30663486	105.5E6	22.817	22.823
7)	B delta-BHC	4.604	5.032	68942530	204.6E6	23.310	21.818
8)	B Heptachlo...	5.131	5.832	64018265	168.5E6	23.029	20.086
10)	B trans-Chl...	5.356	6.066	64445587	169.4E6	22.829	22.644
11)	B cis-Chlor...	5.413	6.137	63166843	166.1E6	23.044	22.536
12)	B 4,4'-DDE	5.577	6.298	119.8E6	313.5E6	47.684	46.424
15)	B Endosulfa...	6.240	6.880	102.2E6	285.0E6	47.262	45.121
18)	B Endrin al...	6.407	7.004	71236151	212.9E6	45.736m	45.048m
19)	B Endosulfa...	6.620	7.228	85002363	266.9E6	46.784	45.740
21)	B Endrin ke...	7.111	7.700	87657002	299.2E6	46.068	45.180m

(f)=RT Delta > 1/2 Window (#)=Amounts differ by > 25% (m)=manual int.

Data Path : Z:\pestpcbsrv\HPCHEM1\ECD_D\Data\PD012422\
 Data File : PD067785.D
 Signal(s) : Signal #1: ECD1A.ch Signal #2: ECD2B.ch
 Acq On : 24 Jan 2022 16:43
 Operator : AR\AJ
 Sample : INDB362
 Misc :
 ALS Vial : 29 Sample Multiplier: 1

Integration File signal 1: autoint1.e
 Integration File signal 2: autoint2.e
 Quant Time: Jan 25 05:38:37 2022
 Quant Method : Z:\pestpcbsrv\HPCHEM1\ECD_D\Method\PD122921CLP.M
 Quant Title : GC Extractables
 QLast Update : Tue Dec 28 14:32:50 2021
 Response via : Initial Calibration
 Integrator: ChemStation

Volume Inj. : 1 µl
 Signal #1 Phase : ZB-MR2 Signal #2 Phase: ZB-MR1
 Signal #1 Info : 30M x 0.32mm x0.2 Signal #2 Info : 30M x 0.32mm x 0.50µm



Instrument : ECD_D
 Client Sampled : INDB3115
 Manual Integrations APPROVED
 Reviewed By : Abdul Mirza 01/25/2022
 Supervised By : Ankitia Jodhani 01/28/2022