

Data Path : Z:\pestpcbsrv\HPCHEM1\ECD_D\Data\PD012523\
 Data File : PD073741.D
 Signal(s) : Signal #1: ECD1A.ch Signal #2: ECD2B.ch
 Acq On : 24 Jan 2023 20:59
 Operator : AR\AJ
 Sample : INDB501
 Misc :
 ALS Vial : 18 Sample Multiplier: 1

Instrument :
 ECD_D
 ClientSampleId :

Integration File signal 1: autoint1.e
 Integration File signal 2: autoint2.e
 Quant Time: Jan 25 02:09:14 2023
 Quant Method : Z:\pestpcbsrv\HPCHEM1\ECD_D\Method\PD012523CLP.M
 Quant Title : GC Extractables
 QLast Update : Wed Jan 25 02:09:02 2023
 Response via : Initial Calibration
 Integrator: ChemStation

Volume Inj. : 1 µl
 Signal #1 Phase : ZB-MR1 Signal #2 Phase: ZB-MR2
 Signal #1 Info : 30M x 0.32mm x0.5 Signal #2 Info : 30M x 0.32mm x 0.25µm

	Compound	RT#1	RT#2	Resp#1	Resp#2	ng/ml	ng/ml

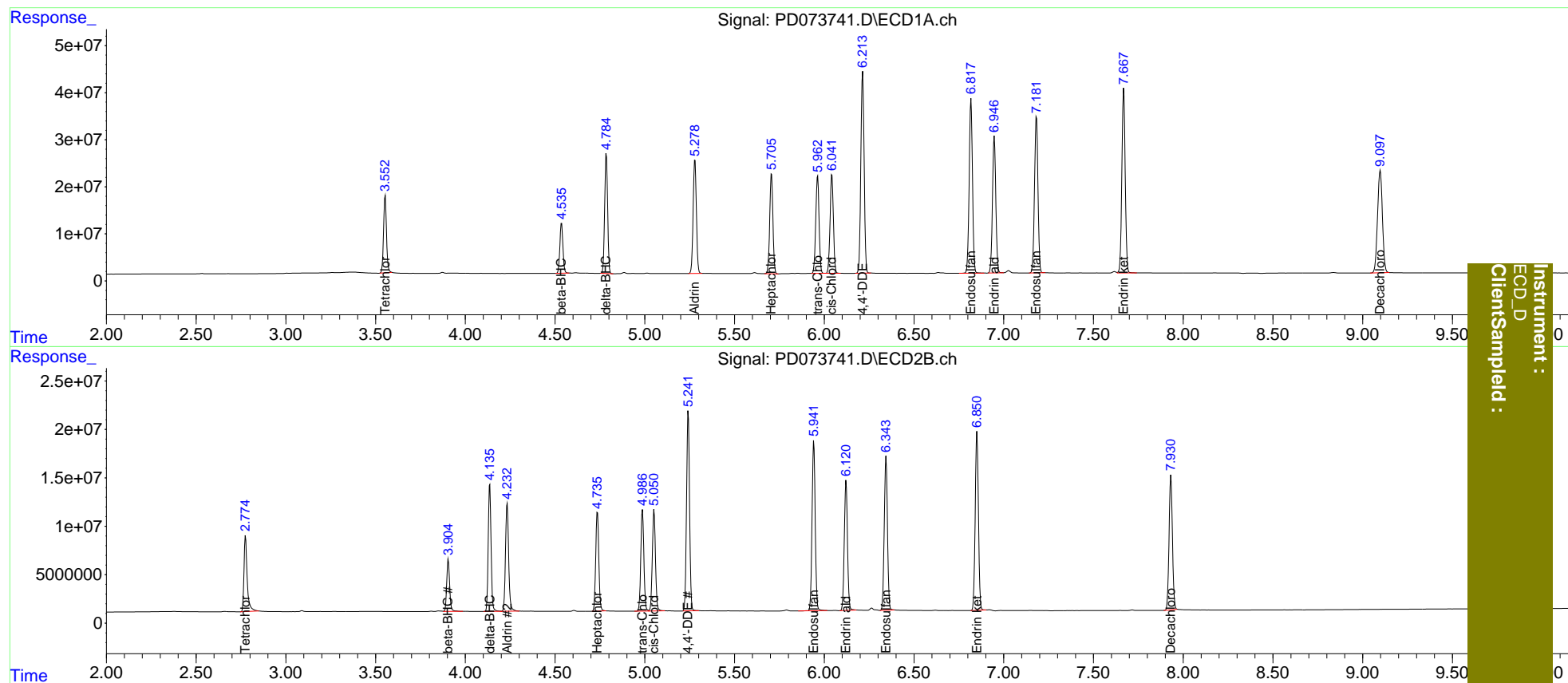
System Monitoring Compounds							
1)	SA Tetrachlo...	3.554	2.775	186.6E6	96575628	80.905	79.165
27)	SA Decachlor...	9.098	7.932	411.4E6	181.0E6	154.362	155.372
Target Compounds							
5)	MB Aldrin	5.280	4.233	303.1E6	137.0E6	83.719	81.498
6)	B beta-BHC	4.536	3.905	126.1E6	60437654	78.713	77.710
7)	B delta-BHC	4.786	4.136	291.5E6	143.5E6	85.672	82.540
8)	B Heptachlo...	5.706	4.736	264.3E6	122.4E6	82.434	80.470
10)	B trans-Chl...	5.963	4.987	266.7E6	124.2E6	82.909	81.036
11)	B cis-Chlor...	6.043	5.052	270.4E6	126.1E6	81.934	80.381
12)	B 4,4'-DDE	6.214	5.242	542.8E6	240.8E6	168.597	164.065
15)	B Endosulfa...	6.818	5.942	475.6E6	214.3E6	163.708	160.337
18)	B Endrin al...	6.948	6.122	374.8E6	165.6E6	161.017	158.088
19)	B Endosulfa...	7.183	6.345	443.5E6	195.1E6	162.497	159.870
21)	B Endrin ke...	7.669	6.851	509.6E6	230.6E6	162.382	158.572

(f)=RT Delta > 1/2 Window (#)=Amounts differ by > 25% (m)=manual int.

Data Path : Z:\pestpcbsrv\HPCHEM1\ECD_D\Data\PD012523\
 Data File : PD073741.D
 Signal(s) : Signal #1: ECD1A.ch Signal #2: ECD2B.ch
 Acq On : 24 Jan 2023 20:59
 Operator : AR\AJ
 Sample : INDB501
 Misc :
 ALS Vial : 18 Sample Multiplier: 1

Integration File signal 1: autoint1.e
 Integration File signal 2: autoint2.e
 Quant Time: Jan 25 02:09:14 2023
 Quant Method : Z:\pestpcbsrv\HPCHEM1\ECD_D\Method\PD012523CLP.M
 Quant Title : GC Extractables
 QLast Update : Wed Jan 25 02:09:02 2023
 Response via : Initial Calibration
 Integrator: ChemStation

Volume Inj. : 1 µl
 Signal #1 Phase : ZB-MR1 Signal #2 Phase: ZB-MR2
 Signal #1 Info : 30M x 0.32mm x0.5 Signal #2 Info : 30M x 0.32mm x 0.25µm



Instrument :
 ECD_D
 ClientSampled :