

Data Path : Z:\pestpcbsrv\HPCHEM1\ECD_D\Data\PD012622\
 Data File : PD067803.D
 Signal(s) : Signal #1: ECD1A.ch Signal #2: ECD2B.ch
 Acq On : 26 Jan 2022 11:22
 Operator : AR\AJ
 Sample : N1230-03
 Misc :
 ALS Vial : 8 Sample Multiplier: 1

Instrument :
 ECD_D
 ClientSampleId :

Integration File signal 1: autoint1.e
 Integration File signal 2: autoint2.e
 Quant Time: Jan 27 04:04:58 2022
 Quant Method : Z:\pestpcbsrv\HPCHEM1\ECD_D\Method\PD122921CLP.M
 Quant Title : GC Extractables
 QLast Update : Tue Dec 28 14:32:50 2021
 Response via : Initial Calibration
 Integrator: ChemStation

Volume Inj. : 1 µl
 Signal #1 Phase : ZB-MR2 Signal #2 Phase: ZB-MR1
 Signal #1 Info : 30M x 0.32mm x0.2 Signal #2 Info : 30M x 0.32mm x 0.50µm

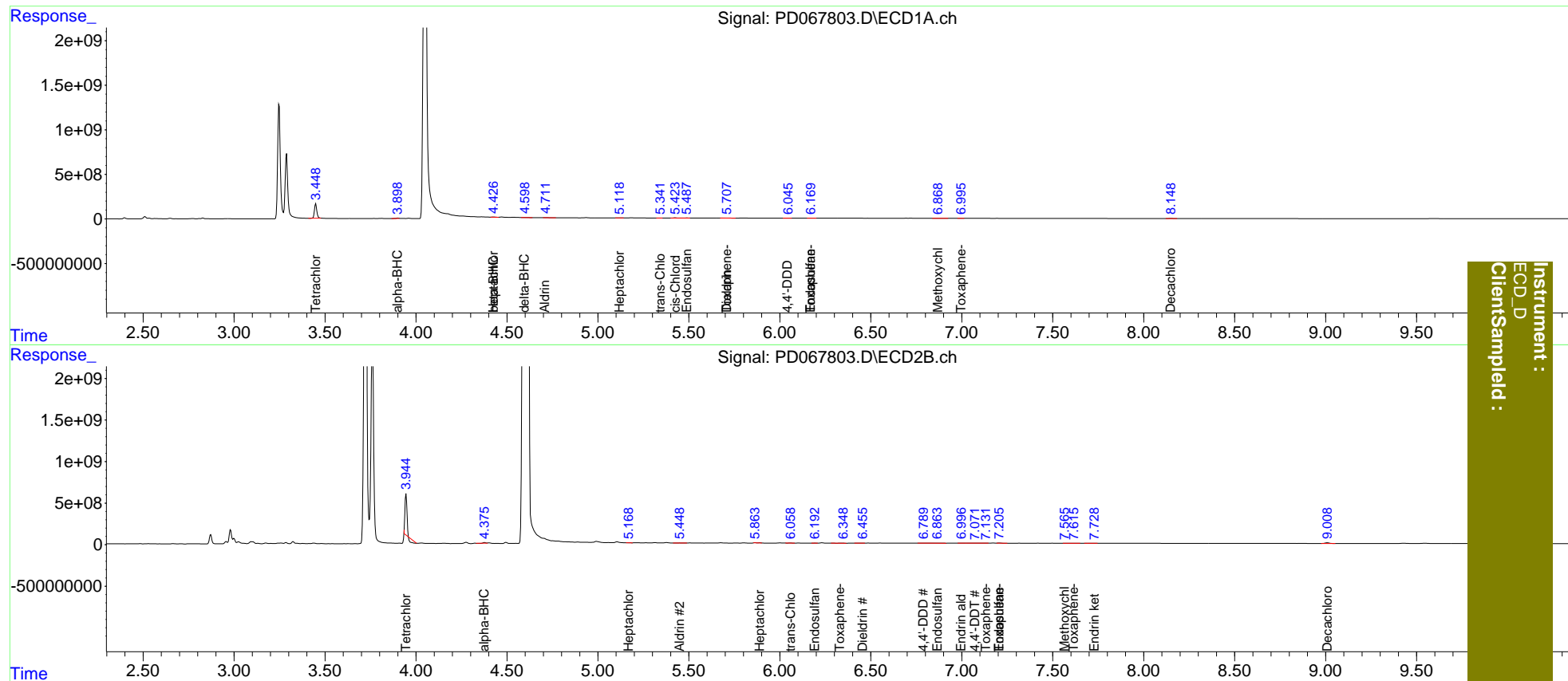
Compound	RT#1	RT#2	Resp#1	Resp#2	ng/ml	ng/ml
System Monitoring Compounds						
1) SA Tetrachlo...	3.449	3.946	1479.3E6	2989.8E6	652.915	368.892 #
2) SA Decachlor...	8.150	9.009	26713939	148.0E6	27.892	29.294
Target Compounds						
2) A alpha-BHC	3.900f	4.377	32517724	48187474	9.811	4.598 #
4) MA Heptachlor	4.427	5.169f	14954530	11587883	4.825	1.296 #
5) MB Aldrin	4.710	5.449	908260	3307767	0.291	0.394 #
6) B beta-BHC	4.427f	0.000	14954530	0	11.128	N.D. #
7) B delta-BHC	4.595	5.058	6027390	-313378	2.038	N.D. #
8) B Heptachlo...	5.120	5.889f	7990354	22116429	2.874	2.636
9) A Endosulfan I	5.488	6.193	7721480	14729378	2.917	2.050 #
10) B trans-Chl...	5.342	6.058	648739	13947667	0.230	1.865 #
11) B cis-Chlor...	5.424	6.161	21883588	186799	7.984	<MDL #
12) B 4,4'-DDE	0.000	6.331	0	165801	N.D.	<MDL
13) MA Dieldrin	5.709	6.457	18389764	4638827	6.524	0.617 #
15) B Endosulfa...	6.170f	6.865	3722600	18725636	1.721	2.964 #
16) A 4,4'-DDD	6.041f	6.790	1151266	15704087	0.578	2.672 #
17) MA 4,4'-DDT	0.000	7.075	0	5588749	N.D.	0.962
18) B Endrin al...	0.000	6.998	0	9047637	N.D.	1.914
19) B Endosulfa...	0.000	7.205	0	17812221	N.D.	3.053
20) A Methoxychlor	6.870	7.566	4737615	4255247	5.372	1.543 #
21) B Endrin ke...	0.000	7.730	0	4761554	N.D.	0.719
22) Toxaphene-1	5.709	6.331	18389764	165801	1071.954	4.969 #
23) Toxaphene-2	6.170	6.672	3722600	-250984	224.888	N.D. #
24) Toxaphene-3	0.000	7.134	0	1681898	N.D.	16.945
25) Toxaphene-4	0.000	7.205	0	17812221	N.D.	183.992
26) Toxaphene-5	6.997	7.617	724975	3569193	19.938	46.807 #

(f)=RT Delta > 1/2 Window (#)=Amounts differ by > 25% (m)=manual int.

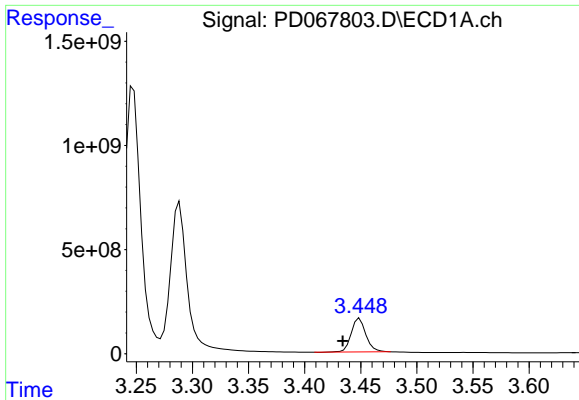
Data Path : Z:\pestpcbsrv\HPCHEM1\ECD_D\Data\PD012622\
 Data File : PD067803.D
 Signal(s) : Signal #1: ECD1A.ch Signal #2: ECD2B.ch
 Acq On : 26 Jan 2022 11:22
 Operator : AR\AJ
 Sample : N1230-03
 Misc :
 ALS Vial : 8 Sample Multiplier: 1

Integration File signal 1: autoint1.e
 Integration File signal 2: autoint2.e
 Quant Time: Jan 27 04:04:58 2022
 Quant Method : Z:\pestpcbsrv\HPCHEM1\ECD_D\Method\PD122921CLP.M
 Quant Title : GC Extractables
 QLast Update : Tue Dec 28 14:32:50 2021
 Response via : Initial Calibration
 Integrator: ChemStation

Volume Inj. : 1 µl
 Signal #1 Phase : ZB-MR2 Signal #2 Phase: ZB-MR1
 Signal #1 Info : 30M x 0.32mm x0.2 Signal #2 Info : 30M x 0.32mm x 0.50µm



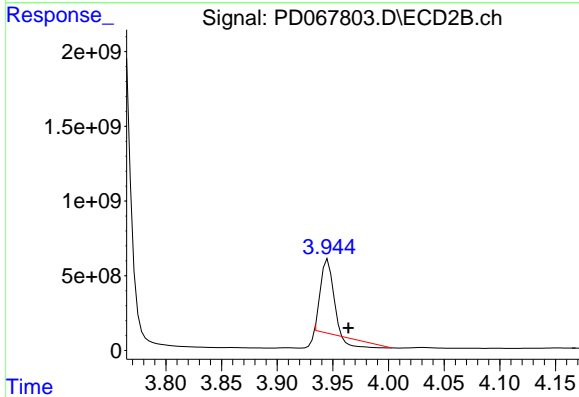
Instrument : ECD_D
 ClientSampled :



#1 Tetrachloro-m-xylene

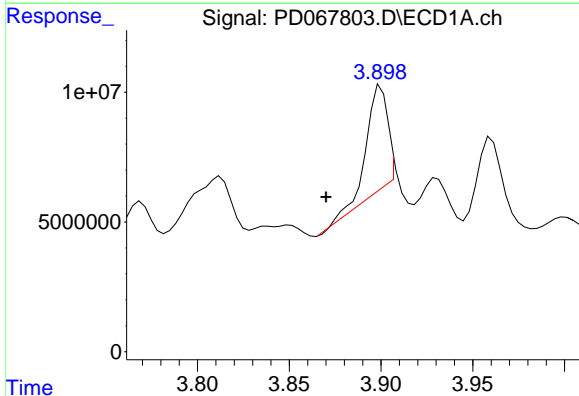
R.T.: 3.449 min
 Delta R.T.: 0.015 min
 Response: 1479276447
 Conc: 652.91 ng/ml

Instrument :
 ECD_D
 ClientSampleId :



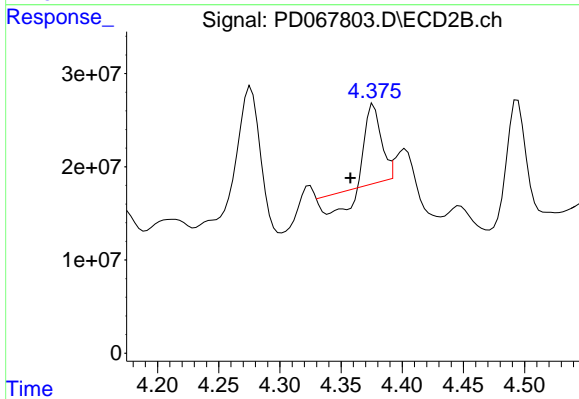
#1 Tetrachloro-m-xylene

R.T.: 3.946 min
 Delta R.T.: -0.018 min
 Response: 2989781963
 Conc: 368.89 ng/ml



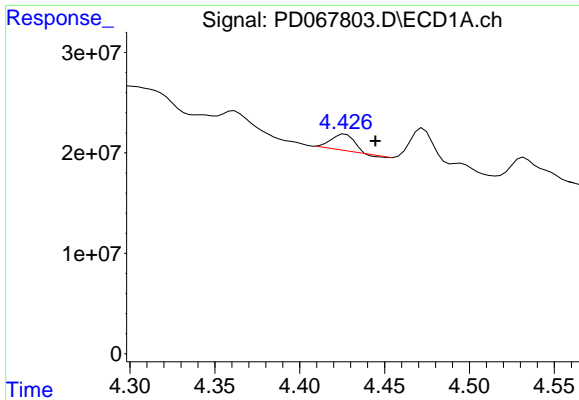
#2 alpha-BHC

R.T.: 3.900 min
 Delta R.T.: 0.030 min
 Response: 32517724
 Conc: 9.81 ng/ml



#2 alpha-BHC

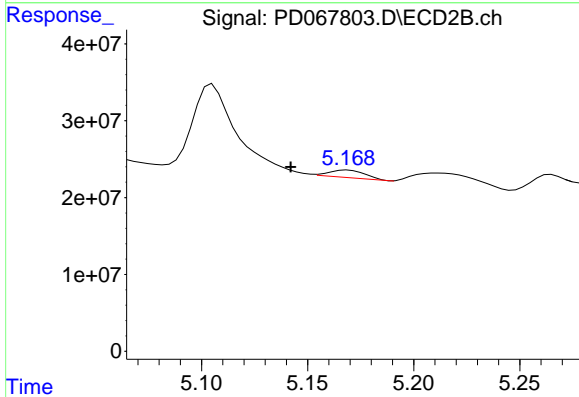
R.T.: 4.377 min
 Delta R.T.: 0.019 min
 Response: 48187474
 Conc: 4.60 ng/ml



#4 Heptachlor

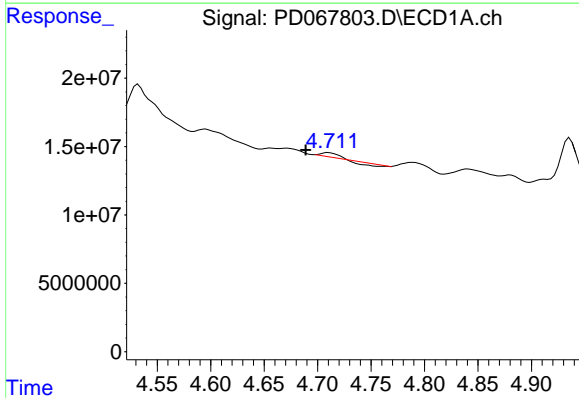
R.T.: 4.427 min
 Delta R.T.: -0.018 min
 Response: 14954530
 Conc: 4.82 ng/ml

Instrument :
 ECD_D
 ClientSampleId :



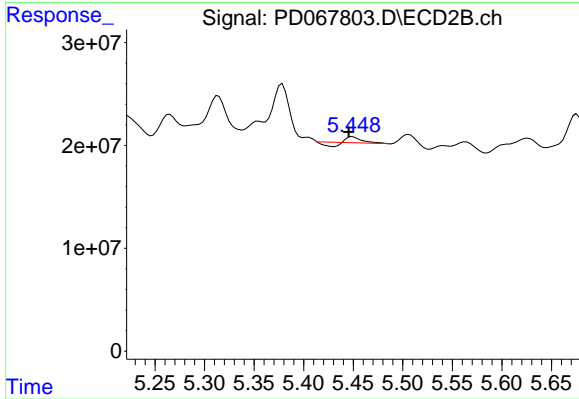
#4 Heptachlor

R.T.: 5.169 min
 Delta R.T.: 0.027 min
 Response: 11587883
 Conc: 1.30 ng/ml



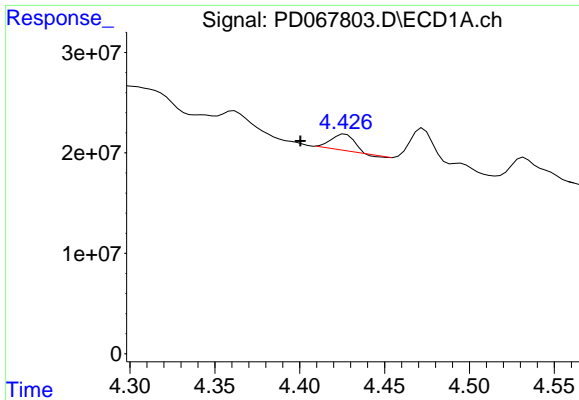
#5 Aldrin

R.T.: 4.710 min
 Delta R.T.: 0.021 min
 Response: 908260
 Conc: 0.29 ng/ml



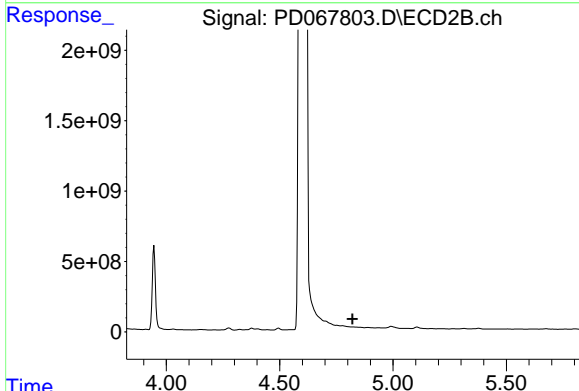
#5 Aldrin

R.T.: 5.449 min
 Delta R.T.: 0.004 min
 Response: 3307767
 Conc: 0.39 ng/ml

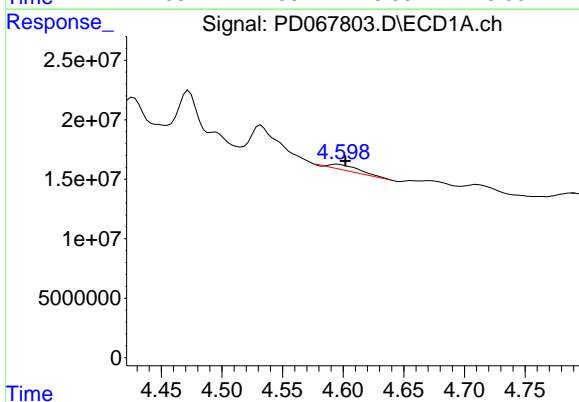


#6 beta-BHC
 R.T.: 4.427 min
 Delta R.T.: 0.027 min
 Response: 14954530
 Conc: 11.13 ng/ml

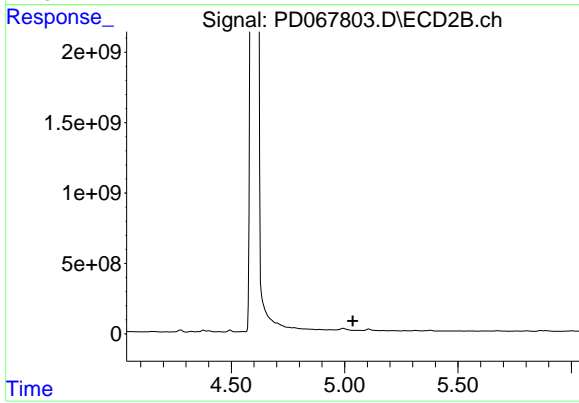
Instrument :
 ECD_D
 ClientSampleId :



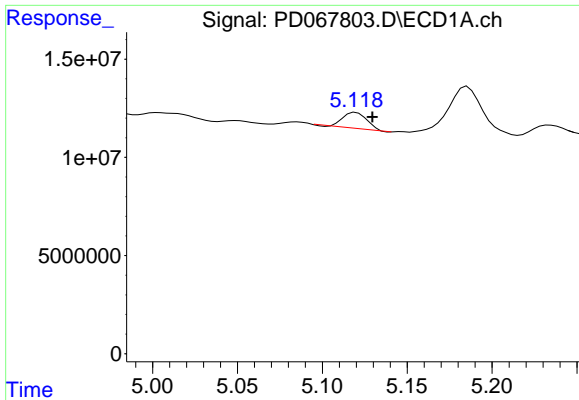
#6 beta-BHC
 R.T.: 0.000 min
 Exp R.T. : 4.822 min
 Response: 0
 Conc: N.D.



#7 delta-BHC
 R.T.: 4.595 min
 Delta R.T.: -0.006 min
 Response: 6027390
 Conc: 2.04 ng/ml

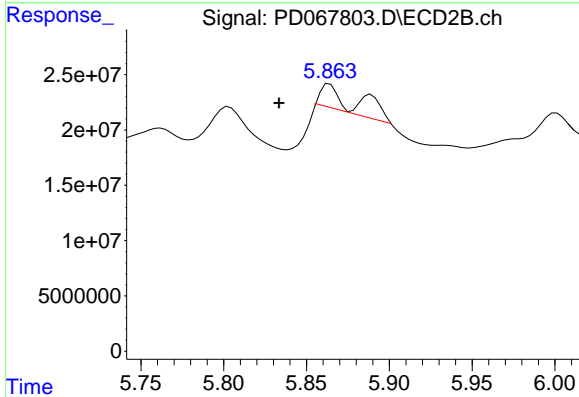


#7 delta-BHC
 R.T.: 5.058 min
 Delta R.T.: 0.022 min
 Response: -313378
 Conc: N.D.

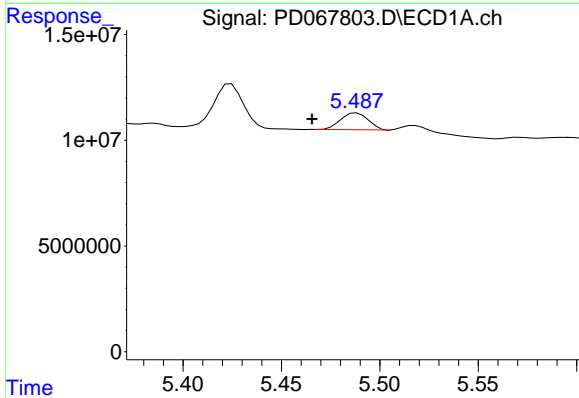


#8 Heptachlor epoxide
 R.T.: 5.120 min
 Delta R.T.: -0.010 min
 Response: 7990354
 Conc: 2.87 ng/ml

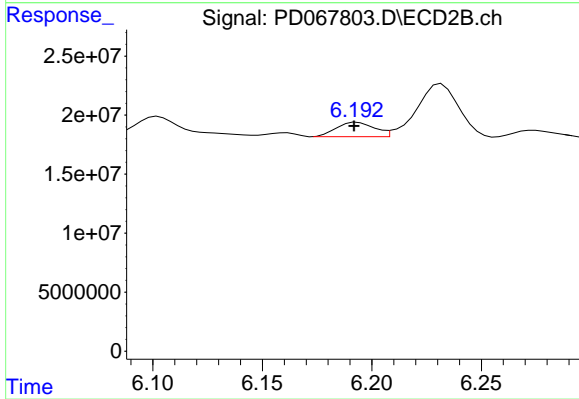
Instrument :
 ECD_D
 ClientSampleId :



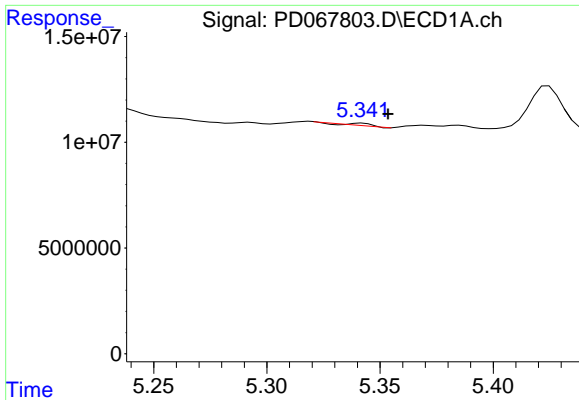
#8 Heptachlor epoxide
 R.T.: 5.889 min
 Delta R.T.: 0.055 min
 Response: 22116429
 Conc: 2.64 ng/ml



#9 Endosulfan I
 R.T.: 5.488 min
 Delta R.T.: 0.023 min
 Response: 7721480
 Conc: 2.92 ng/ml

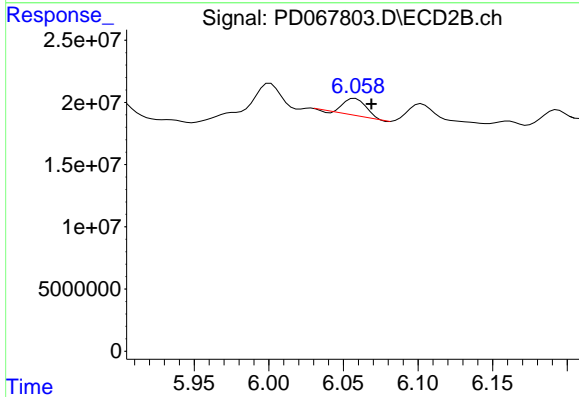


#9 Endosulfan I
 R.T.: 6.193 min
 Delta R.T.: 0.002 min
 Response: 14729378
 Conc: 2.05 ng/ml

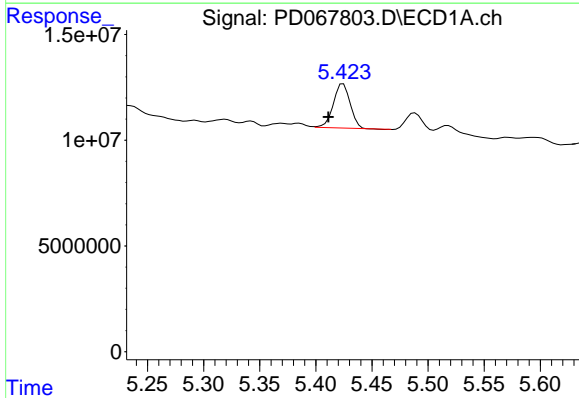


#10 trans-Chlordane
 R.T.: 5.342 min
 Delta R.T.: -0.011 min
 Response: 648739
 Conc: 0.23 ng/ml

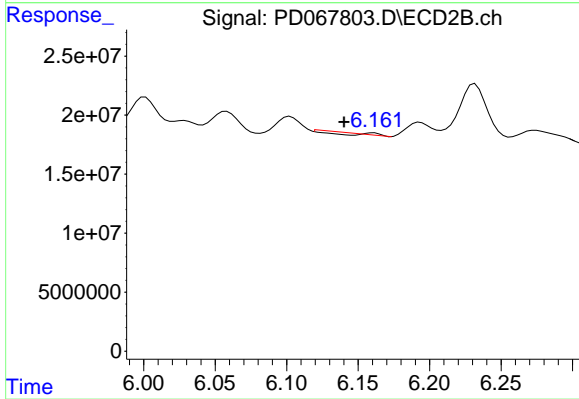
Instrument :
 ECD_D
 ClientSampleId :



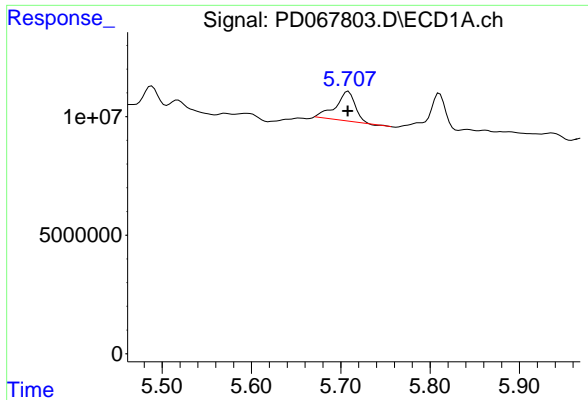
#10 trans-Chlordane
 R.T.: 6.058 min
 Delta R.T.: -0.011 min
 Response: 13947667
 Conc: 1.86 ng/ml



#11 cis-Chlordane
 R.T.: 5.424 min
 Delta R.T.: 0.013 min
 Response: 21883588
 Conc: 7.98 ng/ml



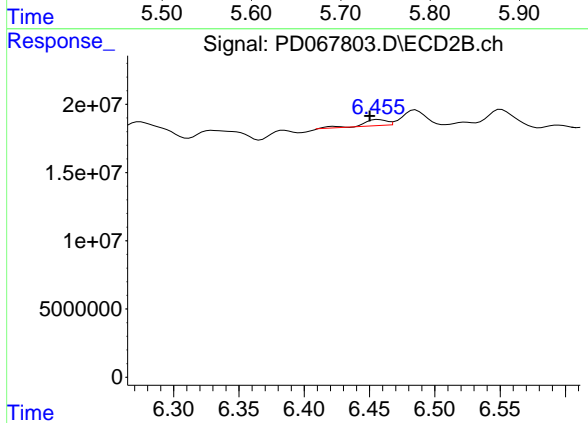
#11 cis-Chlordane
 R.T.: 6.161 min
 Delta R.T.: 0.020 min
 Response: 186799
 Conc: N.D.



#13 Dieldrin

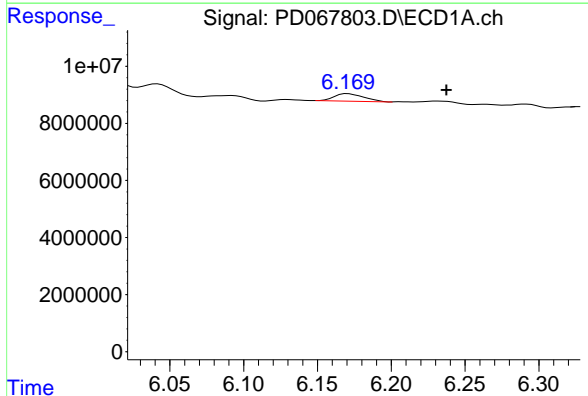
R.T.: 5.709 min
 Delta R.T.: 0.000 min
 Response: 18389764
 Conc: 6.52 ng/ml

Instrument :
 ECD_D
 ClientSampleId :



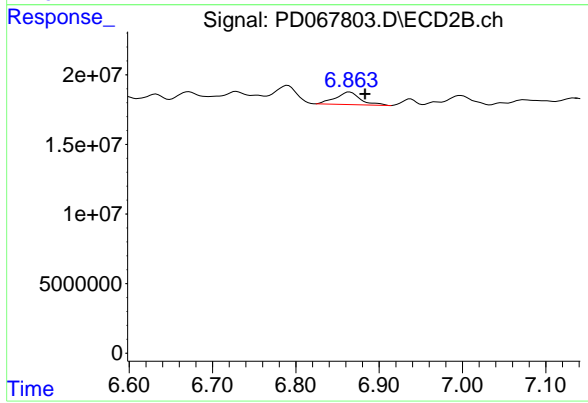
#13 Dieldrin

R.T.: 6.457 min
 Delta R.T.: 0.007 min
 Response: 4638827
 Conc: 0.62 ng/ml



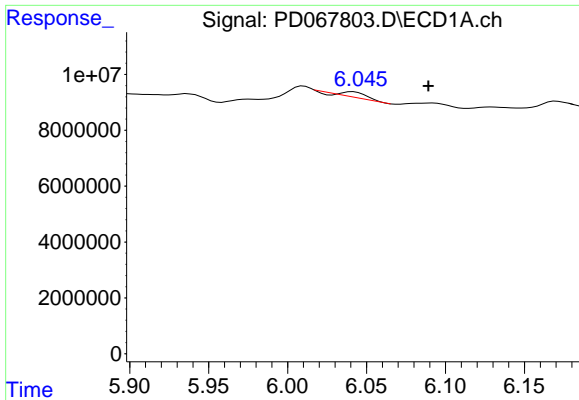
#15 Endosulfan II

R.T.: 6.170 min
 Delta R.T.: -0.067 min
 Response: 3722600
 Conc: 1.72 ng/ml



#15 Endosulfan II

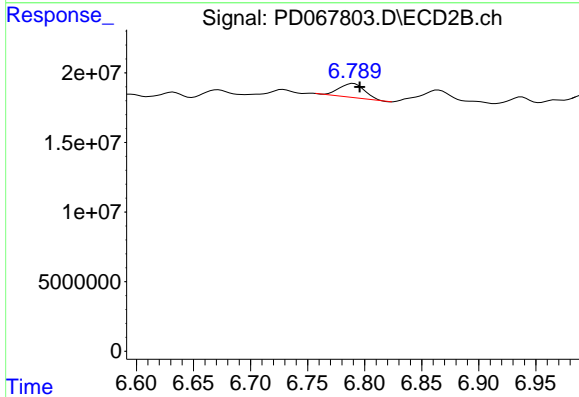
R.T.: 6.865 min
 Delta R.T.: -0.018 min
 Response: 18725636
 Conc: 2.96 ng/ml



#16 4,4'-DDD

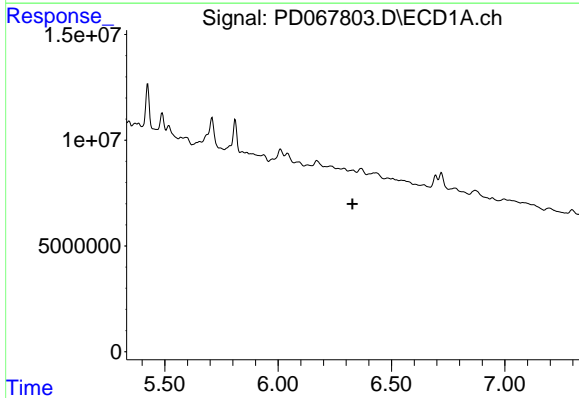
R.T.: 6.041 min
 Delta R.T.: -0.048 min
 Response: 1151266
 Conc: 0.58 ng/ml

Instrument :
 ECD_D
 ClientSampleId :



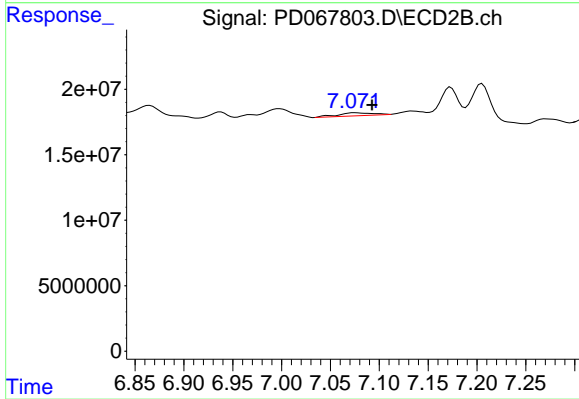
#16 4,4'-DDD

R.T.: 6.790 min
 Delta R.T.: -0.005 min
 Response: 15704087
 Conc: 2.67 ng/ml



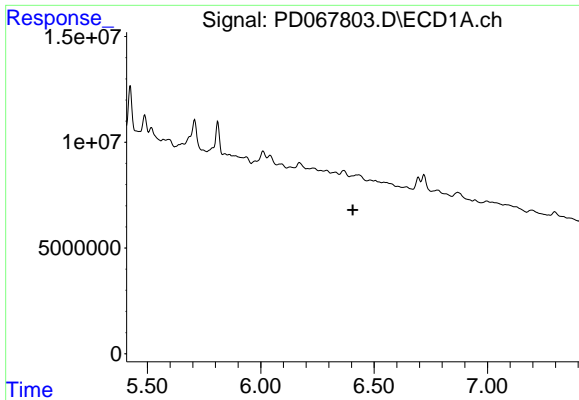
#17 4,4'-DDT

R.T.: 0.000 min
 Exp R.T. : 6.328 min
 Response: 0
 Conc: N.D.



#17 4,4'-DDT

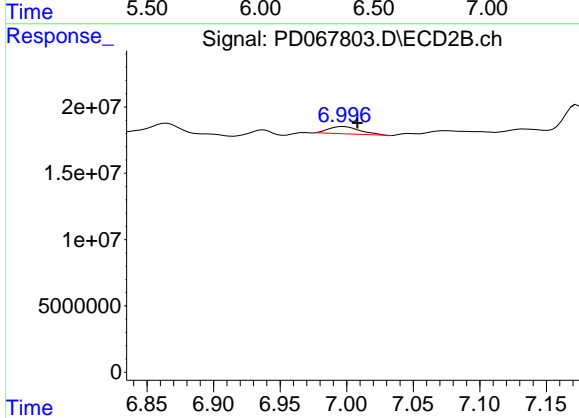
R.T.: 7.075 min
 Delta R.T.: -0.018 min
 Response: 5588749
 Conc: 0.96 ng/ml



#18 Endrin aldehyde

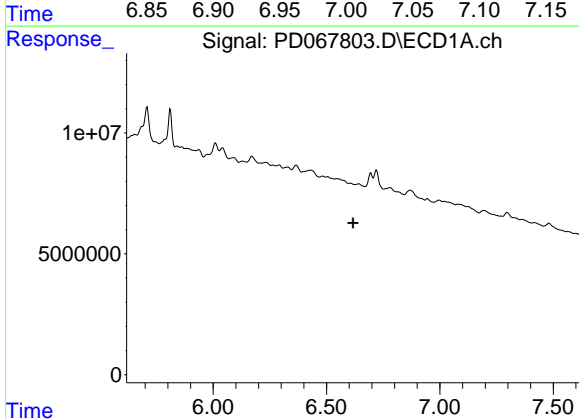
R.T.: 0.000 min
 Exp R.T.: 6.407 min
 Response: 0
 Conc: N.D.

Instrument :
 ECD_D
 ClientSampleId :



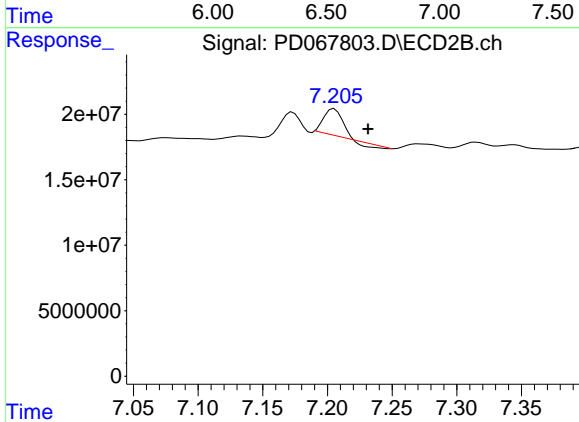
#18 Endrin aldehyde

R.T.: 6.998 min
 Delta R.T.: -0.010 min
 Response: 9047637
 Conc: 1.91 ng/ml



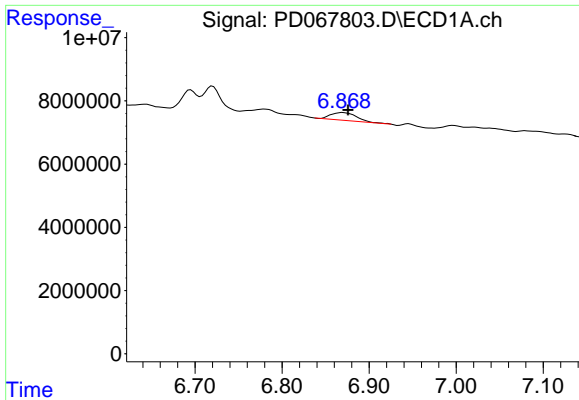
#19 Endosulfan Sulfate

R.T.: 0.000 min
 Exp R.T.: 6.618 min
 Response: 0
 Conc: N.D.



#19 Endosulfan Sulfate

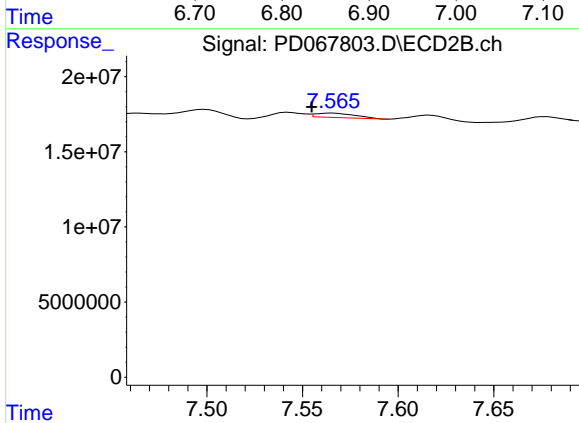
R.T.: 7.205 min
 Delta R.T.: -0.026 min
 Response: 17812221
 Conc: 3.05 ng/ml



#20 Methoxychlor

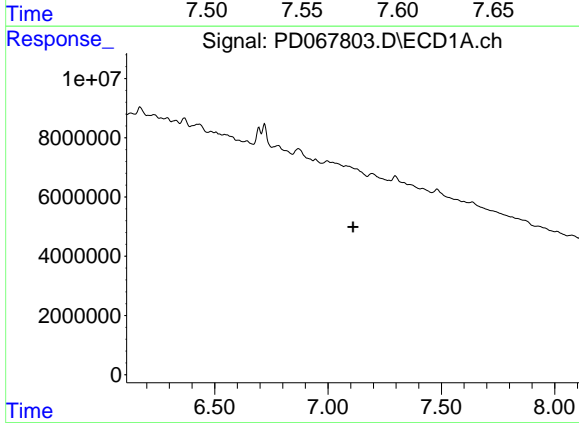
R.T.: 6.870 min
 Delta R.T.: -0.006 min
 Response: 4737615
 Conc: 5.37 ng/ml

Instrument :
 ECD_D
 ClientSampleId :



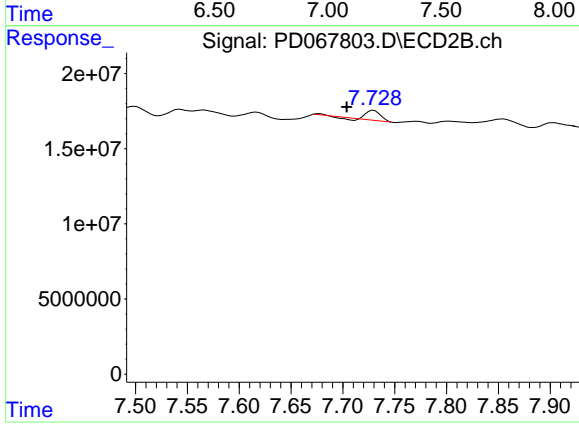
#20 Methoxychlor

R.T.: 7.566 min
 Delta R.T.: 0.011 min
 Response: 4255247
 Conc: 1.54 ng/ml



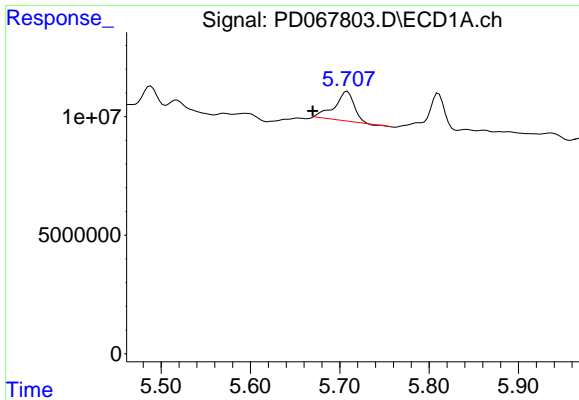
#21 Endrin ketone

R.T.: 0.000 min
 Exp R.T. : 7.110 min
 Response: 0
 Conc: N.D.



#21 Endrin ketone

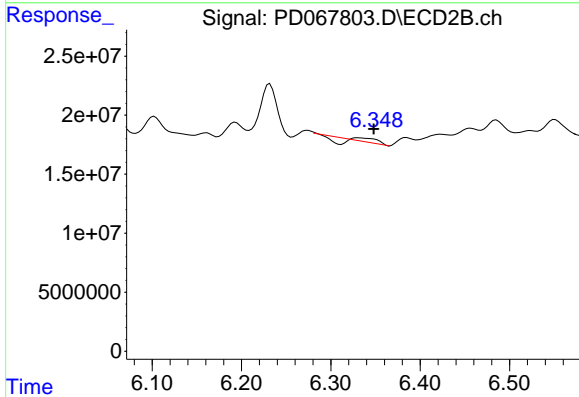
R.T.: 7.730 min
 Delta R.T.: 0.026 min
 Response: 4761554
 Conc: 0.72 ng/ml



#22 Toxaphene-1

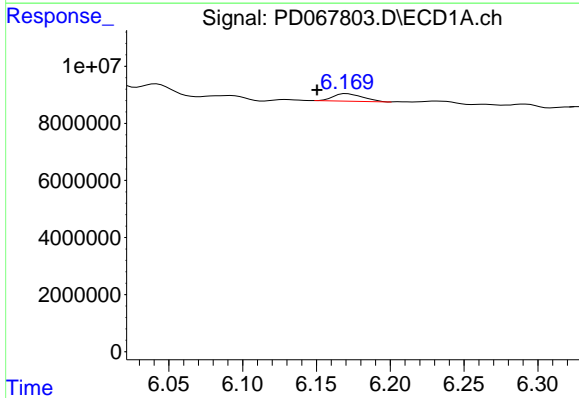
R.T.: 5.709 min
 Delta R.T.: 0.039 min
 Response: 18389764
 Conc: 1071.95 ng/ml

Instrument :
 ECD_D
 ClientSampleId :



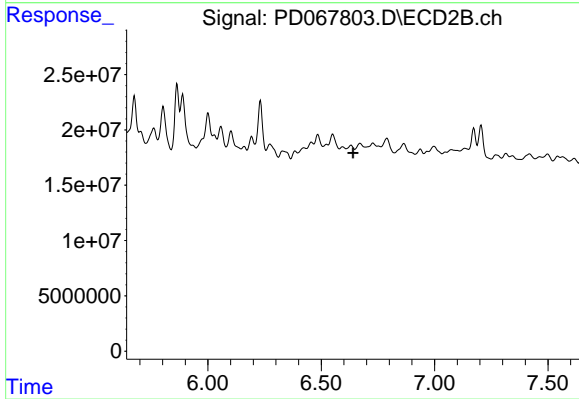
#22 Toxaphene-1

R.T.: 6.331 min
 Delta R.T.: -0.017 min
 Response: 165801
 Conc: 4.97 ng/ml



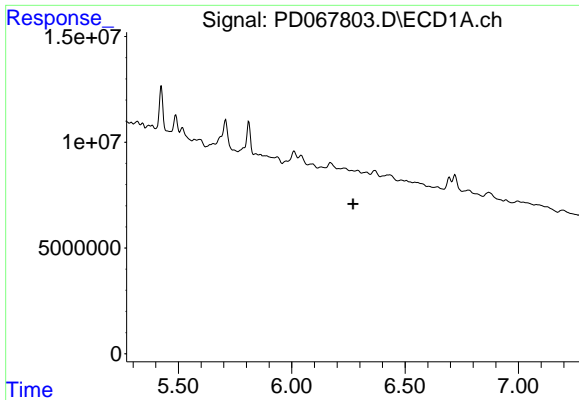
#23 Toxaphene-2

R.T.: 6.170 min
 Delta R.T.: 0.020 min
 Response: 3722600
 Conc: 224.89 ng/ml



#23 Toxaphene-2

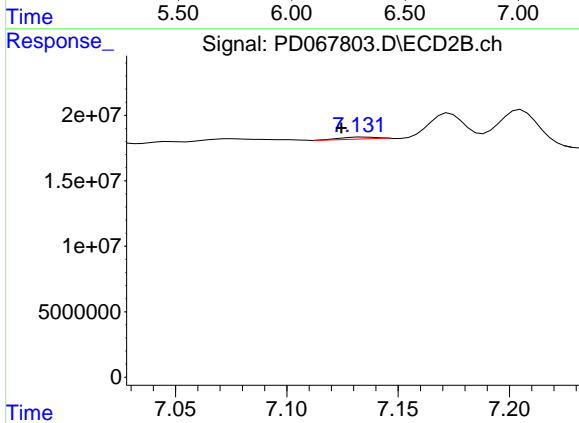
R.T.: 6.672 min
 Delta R.T.: 0.031 min
 Response: -250984
 Conc: N.D.



#24 Toxaphene-3

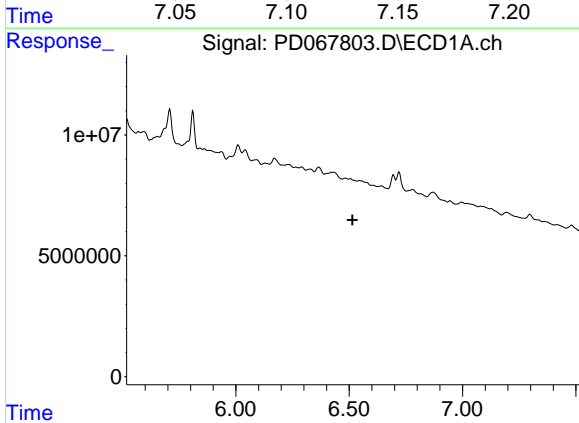
R.T.: 0.000 min
 Exp R.T.: 6.270 min
 Response: 0
 Conc: N.D.

Instrument :
 ECD_D
 ClientSampleId :



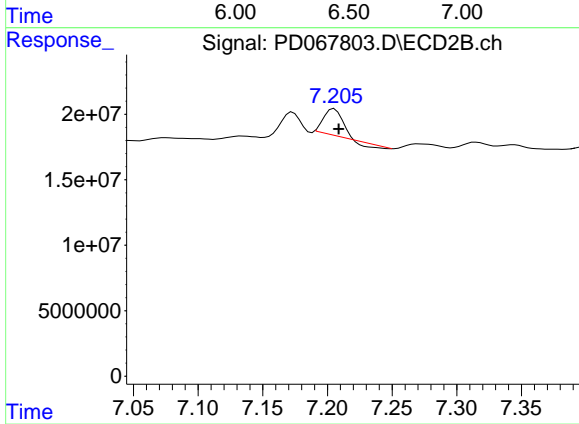
#24 Toxaphene-3

R.T.: 7.134 min
 Delta R.T.: 0.010 min
 Response: 1681898
 Conc: 16.95 ng/ml



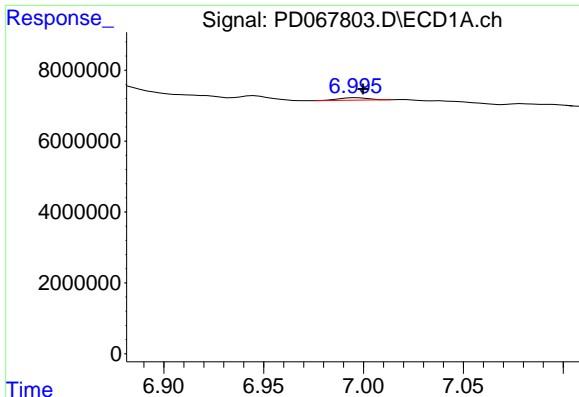
#25 Toxaphene-4

R.T.: 0.000 min
 Exp R.T.: 6.515 min
 Response: 0
 Conc: N.D.



#25 Toxaphene-4

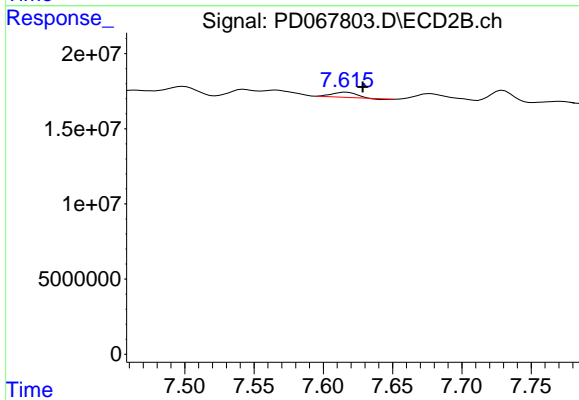
R.T.: 7.205 min
 Delta R.T.: -0.003 min
 Response: 17812221
 Conc: 183.99 ng/ml



#26 Toxaphene-5

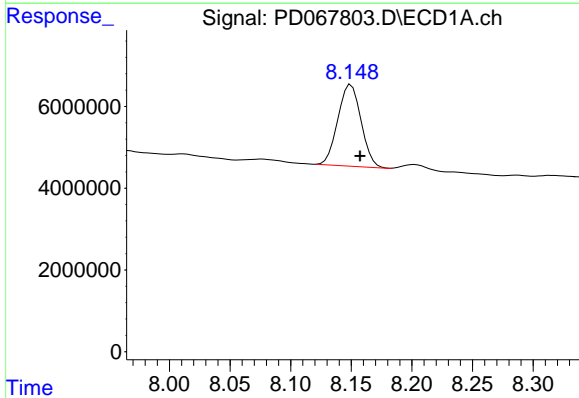
R.T.: 6.997 min
 Delta R.T.: -0.003 min
 Response: 724975
 Conc: 19.94 ng/ml

Instrument :
 ECD_D
 ClientSampleId :



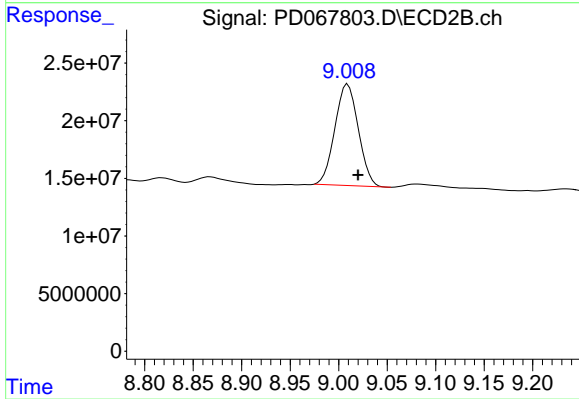
#26 Toxaphene-5

R.T.: 7.617 min
 Delta R.T.: -0.012 min
 Response: 3569193
 Conc: 46.81 ng/ml



#27 Decachlorobiphenyl

R.T.: 8.150 min
 Delta R.T.: -0.007 min
 Response: 26713939
 Conc: 27.89 ng/ml



#27 Decachlorobiphenyl

R.T.: 9.009 min
 Delta R.T.: -0.011 min
 Response: 148023132
 Conc: 29.29 ng/ml