

Data Path : Z:\pestpcbsrv\HPCHEM1\ECD_D\Data\PD012622\
 Data File : PD067812.D
 Signal(s) : Signal #1: ECD1A.ch Signal #2: ECD2B.ch
 Acq On : 26 Jan 2022 13:27
 Operator : AR\AJ
 Sample : N1230-12
 Misc :
 ALS Vial : 17 Sample Multiplier: 1

Instrument :
 ECD_D
 ClientSampleId :

Integration File signal 1: autoint1.e
 Integration File signal 2: autoint2.e
 Quant Time: Jan 27 04:07:30 2022
 Quant Method : Z:\pestpcbsrv\HPCHEM1\ECD_D\Method\PD122921CLP.M
 Quant Title : GC Extractables
 QLast Update : Tue Dec 28 14:32:50 2021
 Response via : Initial Calibration
 Integrator: ChemStation

Volume Inj. : 1 µl
 Signal #1 Phase : ZB-MR2 Signal #2 Phase: ZB-MR1
 Signal #1 Info : 30M x 0.32mm x0.2 Signal #2 Info : 30M x 0.32mm x 0.50µm

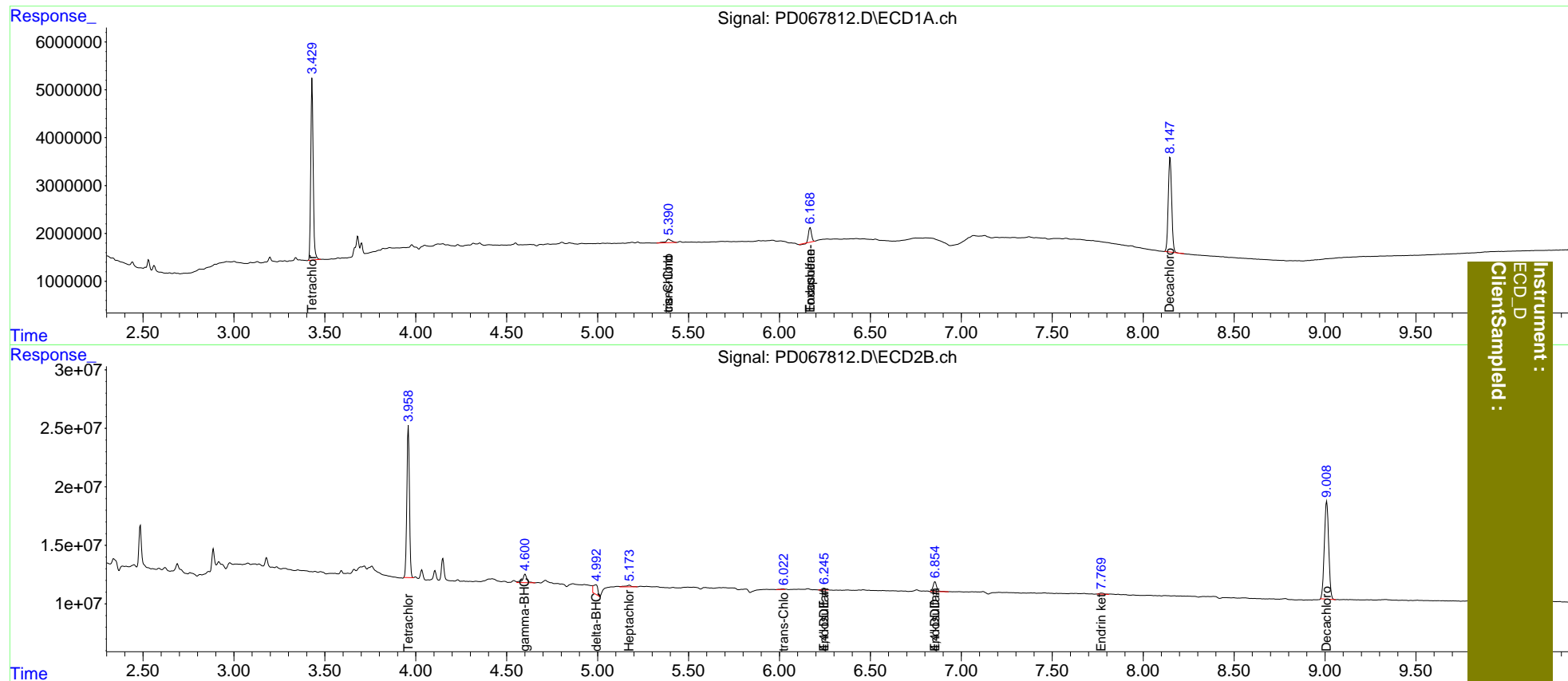
| | Compound | RT#1 | RT#2 | Resp#1 | Resp#2 | ng/ml | ng/ml |
|-----------------------------|-----------------|--------|--------|----------|----------|---------|---------|
| ----- | | | | | | | |
| System Monitoring Compounds | | | | | | | |
| 1) | SA Tetrachlo... | 3.430 | 3.960 | 35100958 | 128.9E6 | 15.493 | 15.910 |
| 27) | SA Decachlor... | 8.148 | 9.010 | 25814069 | 140.1E6 | 26.953 | 27.719 |
| Target Compounds | | | | | | | |
| 3) | MA gamma-BHC... | 0.000 | 4.601f | 0 | 11832446 | N.D. | 1.199 |
| 4) | MA Heptachlor | 0.000 | 5.175f | 0 | 3104917 | N.D. | 0.347 |
| 7) | B delta-BHC | 0.000 | 4.992f | 0 | 14132953 | N.D. | 1.507 |
| 9) | A Endosulfan I | 0.000 | 6.246f | 0 | 2401688 | N.D. | 0.334 |
| 10) | B trans-Chl... | 5.391f | 6.023f | 1571532 | 800694 | 0.557 | 0.107 # |
| 11) | B cis-Chlor... | 5.391 | 0.000 | 1571532 | 0 | 0.573 | N.D. # |
| 12) | B 4,4'-DDE | 0.000 | 6.246f | 0 | 2401688 | N.D. | 0.356 |
| 15) | B Endosulfa... | 6.169f | 6.856 | 3194346 | 11769689 | 1.477 | 1.863 # |
| 16) | A 4,4'-DDD | 0.000 | 6.856f | 0 | 11769689 | N.D. | 2.003 |
| 23) | Toxaphene-2 | 6.169 | 0.000 | 3194346 | 0 | 192.975 | N.D. # |

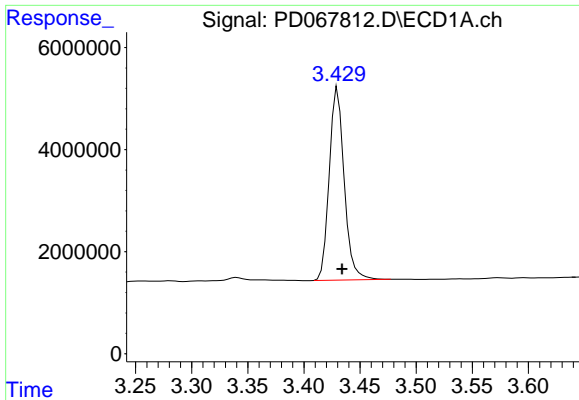
(f)=RT Delta > 1/2 Window (#)=Amounts differ by > 25% (m)=manual int.

Data Path : Z:\pestpcbsrv\HPCHEM1\ECD_D\Data\PD012622\
 Data File : PD067812.D
 Signal(s) : Signal #1: ECD1A.ch Signal #2: ECD2B.ch
 Acq On : 26 Jan 2022 13:27
 Operator : AR\AJ
 Sample : N1230-12
 Misc :
 ALS Vial : 17 Sample Multiplier: 1

Integration File signal 1: autoint1.e
 Integration File signal 2: autoint2.e
 Quant Time: Jan 27 04:07:30 2022
 Quant Method : Z:\pestpcbsrv\HPCHEM1\ECD_D\Method\PD122921CLP.M
 Quant Title : GC Extractables
 QLast Update : Tue Dec 28 14:32:50 2021
 Response via : Initial Calibration
 Integrator: ChemStation

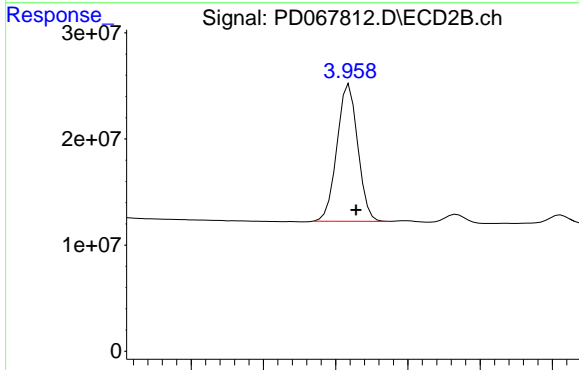
Volume Inj. : 1 µl
 Signal #1 Phase : ZB-MR2 Signal #2 Phase: ZB-MR1
 Signal #1 Info : 30M x 0.32mm x0.2 Signal #2 Info : 30M x 0.32mm x 0.50µm



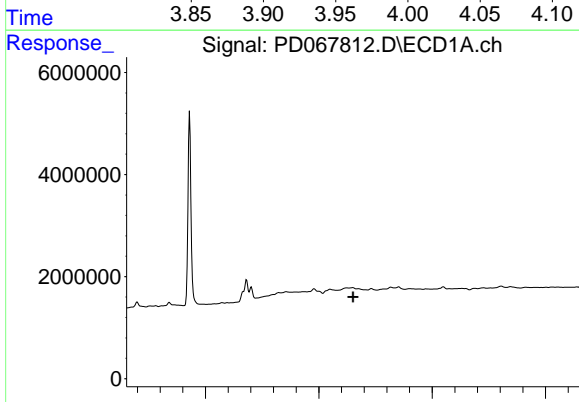


#1 Tetrachloro-m-xylene
 R.T.: 3.430 min
 Delta R.T.: -0.004 min
 Response: 35100958
 Conc: 15.49 ng/ml

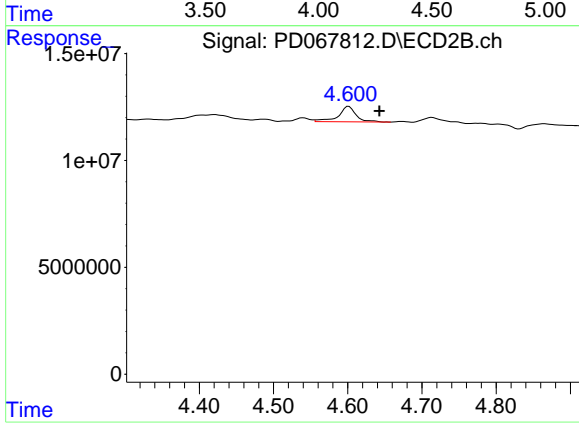
Instrument :
 ECD_D
 ClientSampleId :



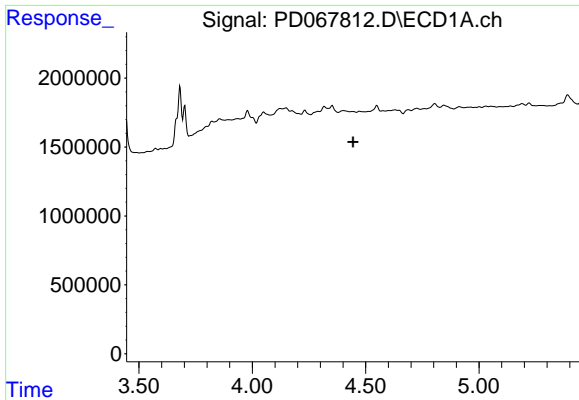
#1 Tetrachloro-m-xylene
 R.T.: 3.960 min
 Delta R.T.: -0.005 min
 Response: 128944311
 Conc: 15.91 ng/ml



#3 gamma-BHC (Lindane)
 R.T.: 0.000 min
 Exp R.T. : 4.151 min
 Response: 0
 Conc: N.D.



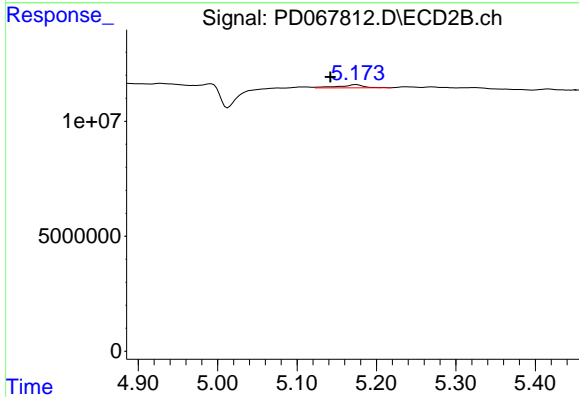
#3 gamma-BHC (Lindane)
 R.T.: 4.601 min
 Delta R.T.: -0.041 min
 Response: 11832446
 Conc: 1.20 ng/ml



#4 Heptachlor

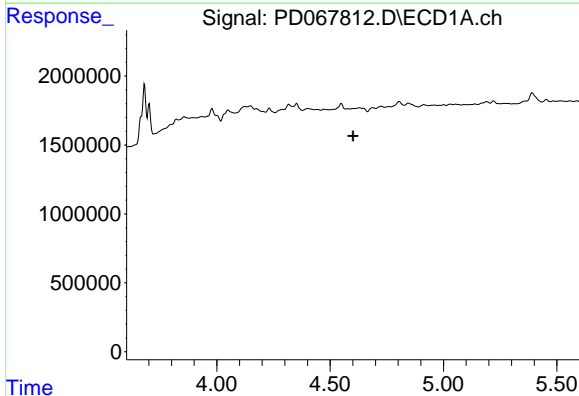
R.T.: 0.000 min
 Exp R.T. : 4.444 min
 Response: 0
 Conc: N.D.

Instrument :
 ECD_D
 ClientSampleId :



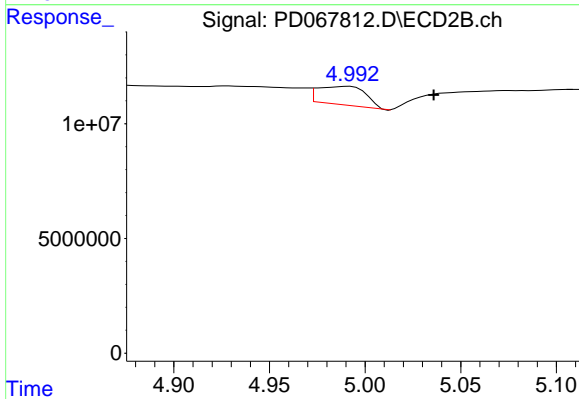
#4 Heptachlor

R.T.: 5.175 min
 Delta R.T.: 0.032 min
 Response: 3104917
 Conc: 0.35 ng/ml



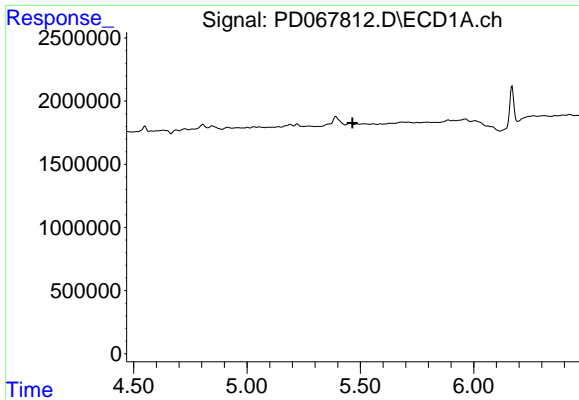
#7 delta-BHC

R.T.: 0.000 min
 Exp R.T. : 4.602 min
 Response: 0
 Conc: N.D.



#7 delta-BHC

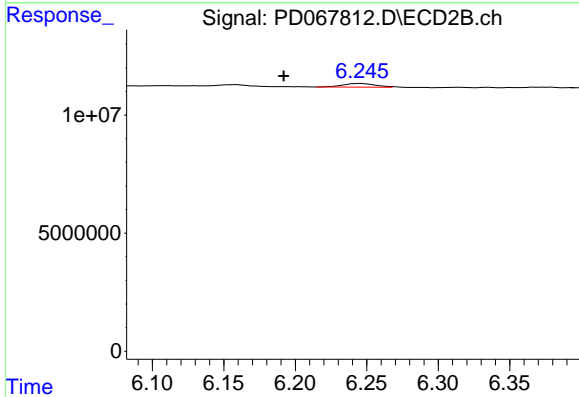
R.T.: 4.992 min
 Delta R.T.: -0.044 min
 Response: 14132953
 Conc: 1.51 ng/ml



#9 Endosulfan I

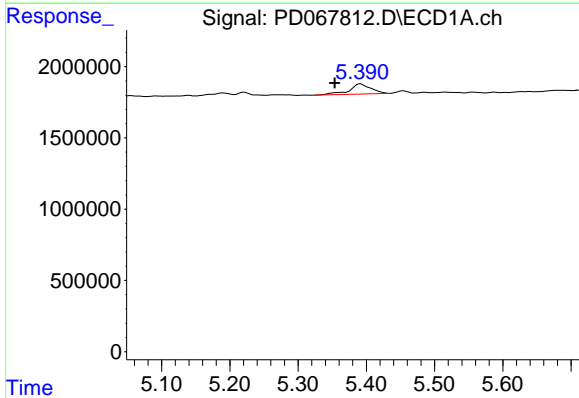
R.T.: 0.000 min
 Exp R.T.: 5.466 min
 Response: 0
 Conc: N.D.

Instrument :
 ECD_D
 ClientSampleId :



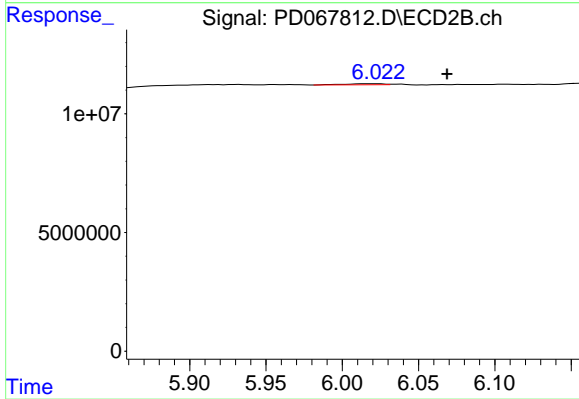
#9 Endosulfan I

R.T.: 6.246 min
 Delta R.T.: 0.054 min
 Response: 2401688
 Conc: 0.33 ng/ml



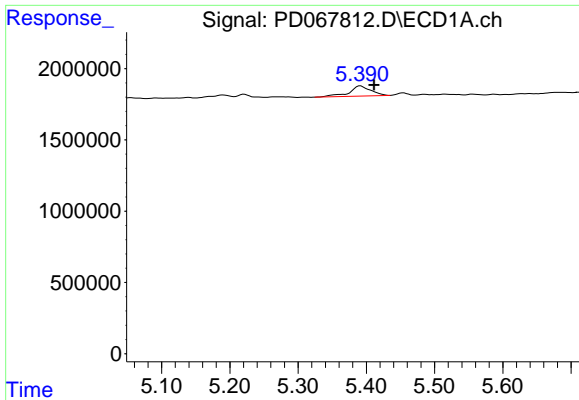
#10 trans-Chlordane

R.T.: 5.391 min
 Delta R.T.: 0.038 min
 Response: 1571532
 Conc: 0.56 ng/ml



#10 trans-Chlordane

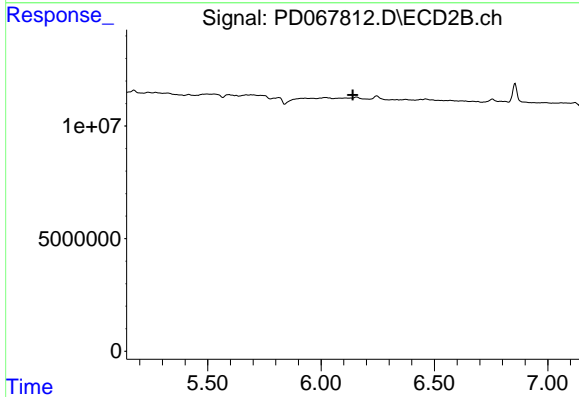
R.T.: 6.023 min
 Delta R.T.: -0.045 min
 Response: 800694
 Conc: 0.11 ng/ml



#11 cis-Chlordane

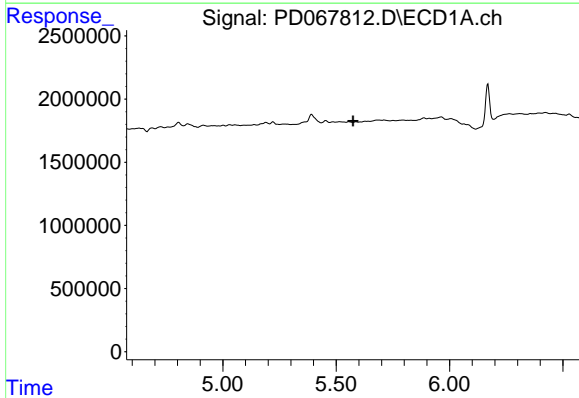
R.T.: 5.391 min
 Delta R.T.: -0.020 min
 Response: 1571532
 Conc: 0.57 ng/ml

Instrument :
 ECD_D
 ClientSampleId :



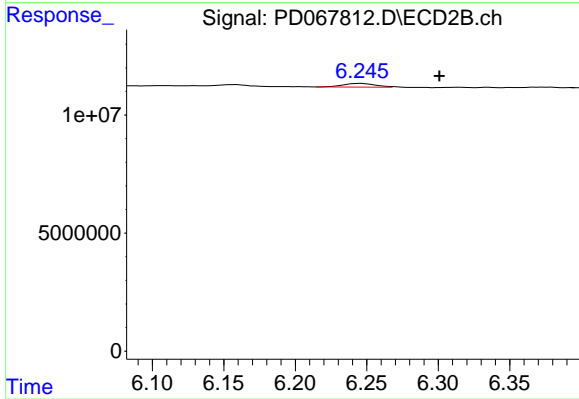
#11 cis-Chlordane

R.T.: 0.000 min
 Exp R.T. : 6.140 min
 Response: 0
 Conc: N.D.



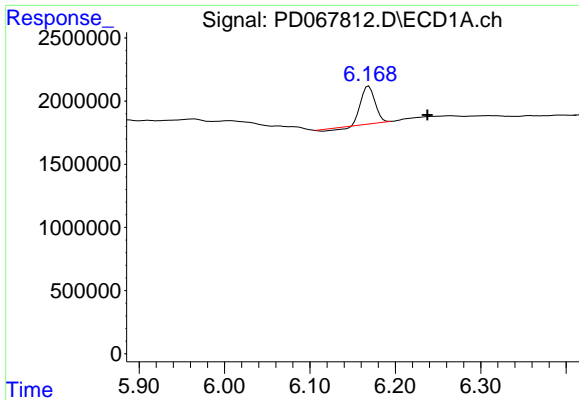
#12 4,4'-DDE

R.T.: 0.000 min
 Exp R.T. : 5.575 min
 Response: 0
 Conc: N.D.



#12 4,4'-DDE

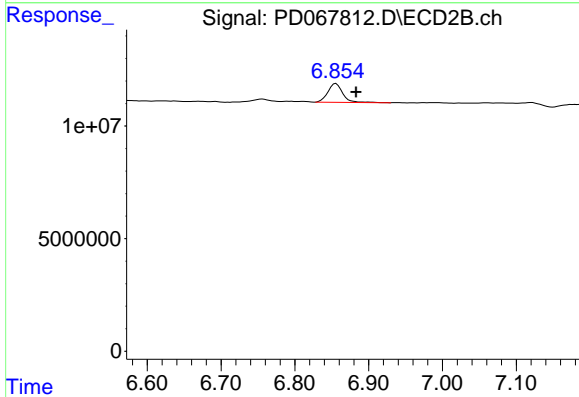
R.T.: 6.246 min
 Delta R.T.: -0.055 min
 Response: 2401688
 Conc: 0.36 ng/ml



#15 Endosulfan II

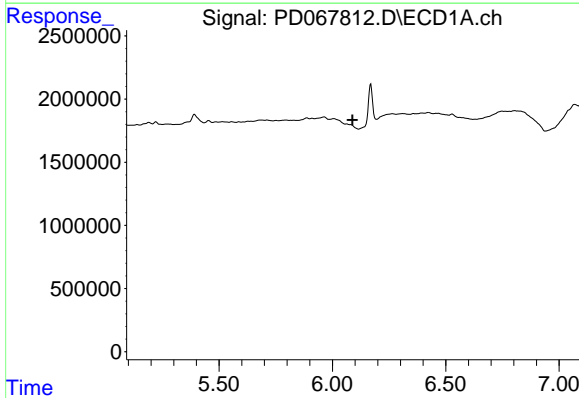
R.T.: 6.169 min
 Delta R.T.: -0.068 min
 Response: 3194346
 Conc: 1.48 ng/ml

Instrument :
 ECD_D
 ClientSampleId :



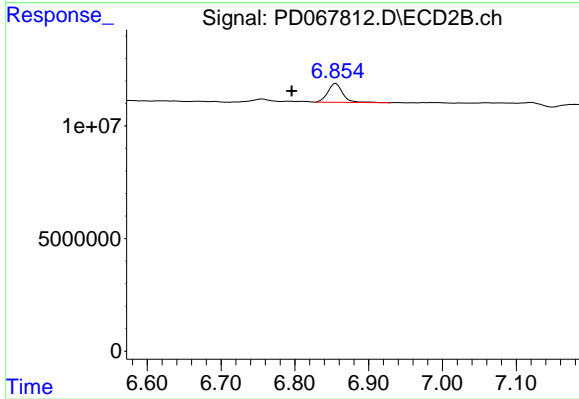
#15 Endosulfan II

R.T.: 6.856 min
 Delta R.T.: -0.027 min
 Response: 11769689
 Conc: 1.86 ng/ml



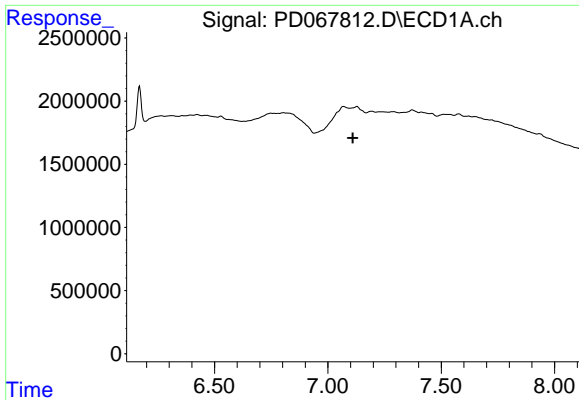
#16 4,4'-DDD

R.T.: 0.000 min
 Exp R.T. : 6.089 min
 Response: 0
 Conc: N.D.



#16 4,4'-DDD

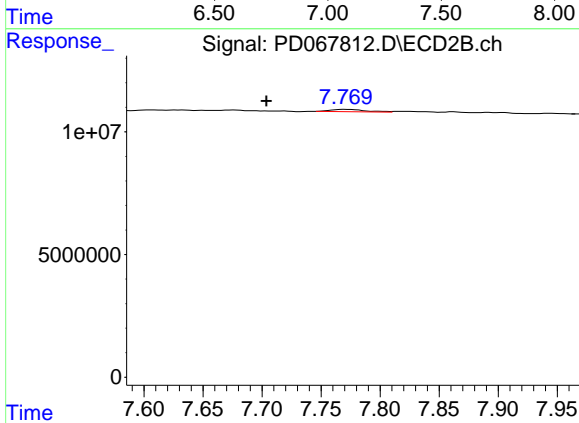
R.T.: 6.856 min
 Delta R.T.: 0.060 min
 Response: 11769689
 Conc: 2.00 ng/ml



#21 Endrin ketone

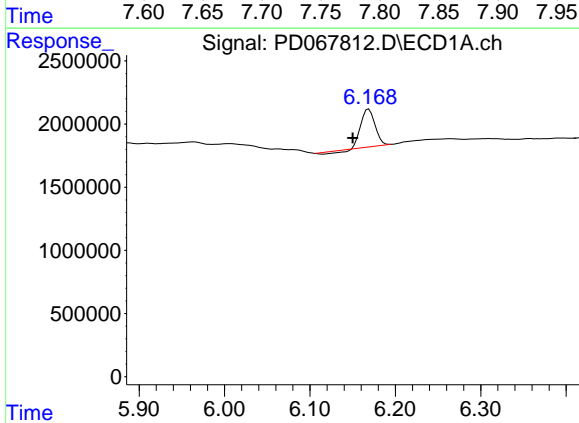
R.T.: 7.069 min
 Delta R.T.: -0.041 min
 Response: -1880763
 Conc: N.D.

Instrument :
 ECD_D
 ClientSampleId :



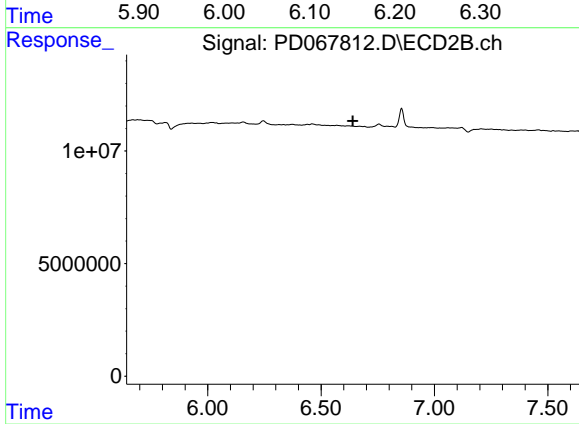
#21 Endrin ketone

R.T.: 7.770 min
 Delta R.T.: 0.067 min
 Response: 1976026
 Conc: 0.30 ng/ml



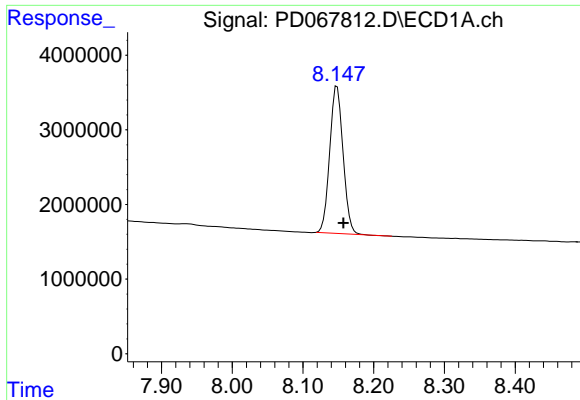
#23 Toxaphene-2

R.T.: 6.169 min
 Delta R.T.: 0.019 min
 Response: 3194346
 Conc: 192.98 ng/ml



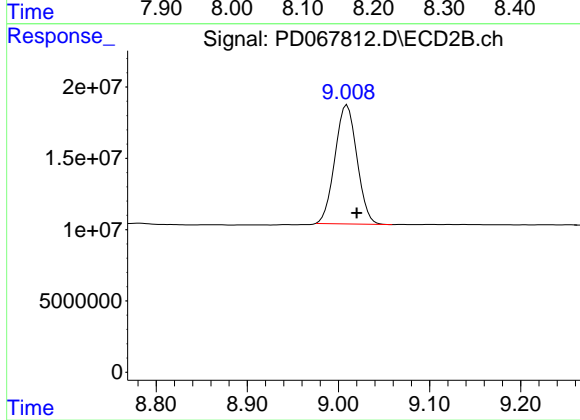
#23 Toxaphene-2

R.T.: 0.000 min
 Exp R.T.: 6.640 min
 Response: 0
 Conc: N.D.



#27 Decachlorobiphenyl
R.T.: 8.148 min
Delta R.T.: -0.009 min
Response: 25814069
Conc: 26.95 ng/ml

Instrument :
ECD_D
ClientSampleId :



#27 Decachlorobiphenyl
R.T.: 9.010 min
Delta R.T.: -0.011 min
Response: 140066637
Conc: 27.72 ng/ml