

Data Path : Z:\pestpcbsrv\HPCHEM1\ECD_D\Data\PD012623\
 Data File : PD073779.D
 Signal(s) : Signal #1: ECD1A.ch Signal #2: ECD2B.ch
 Acq On : 25 Jan 2023 16:58
 Operator : AR\AJ
 Sample : 01277-04
 Misc :
 ALS Vial : 14 Sample Multiplier: 1

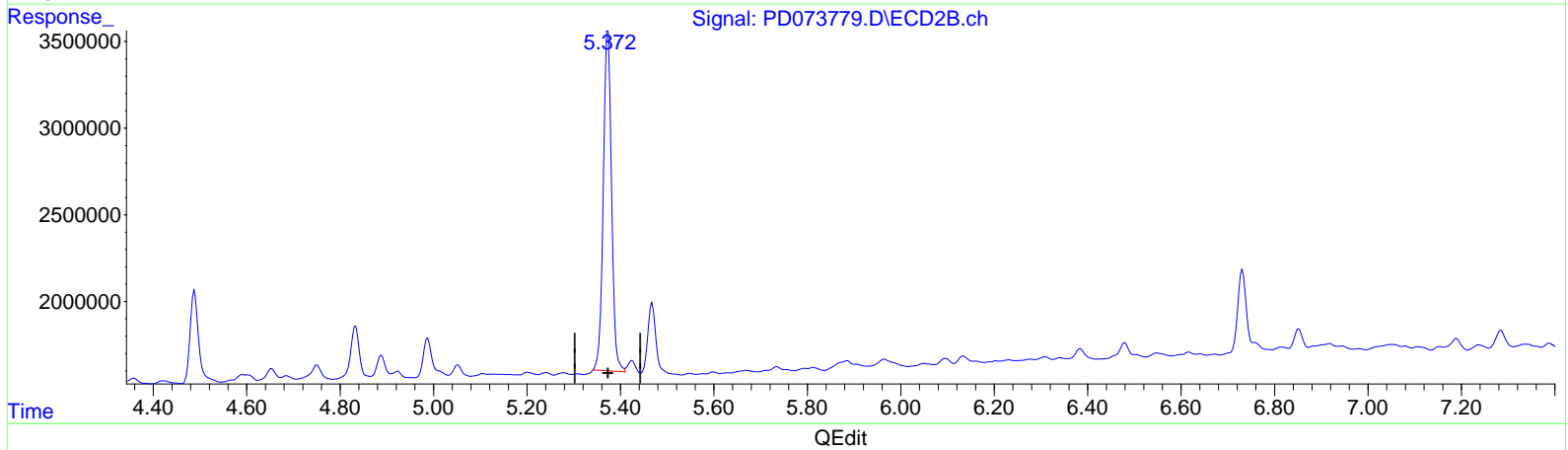
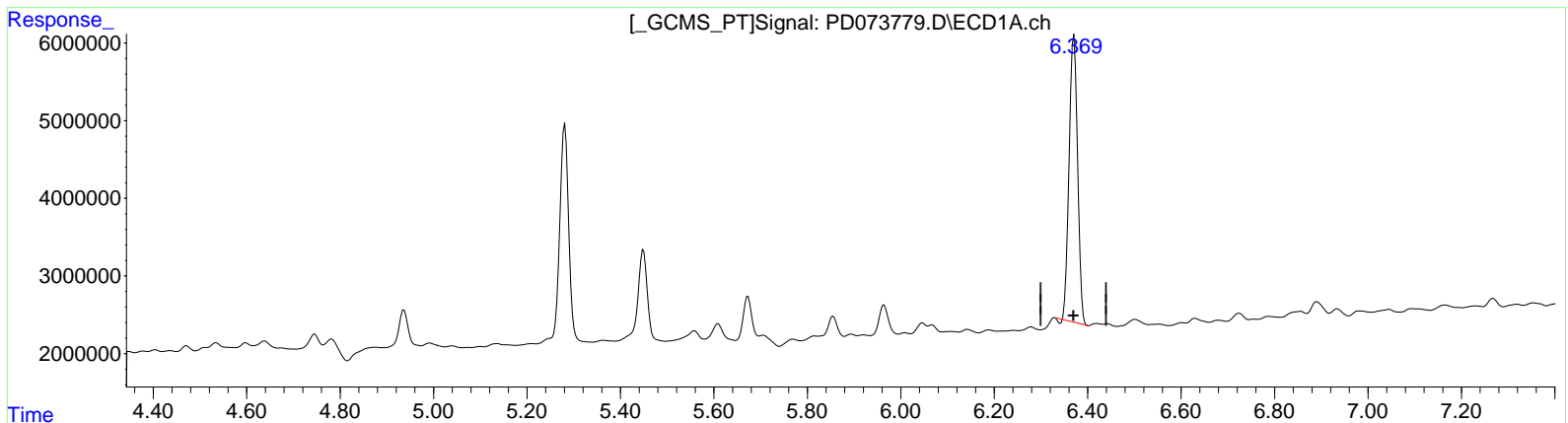
Instrument :
 ECD_D
ClientSampleId :
 EX9G8

Manual Integrations APPROVED

Reviewed By :Abdul Mirza 01/26/2023
 Supervised By :Ankita Jodhani 01/26/2023

Integration File signal 1: autoint1.e
 Integration File signal 2: autoint2.e
 Quant Time: Jan 25 20:56:06 2023
 Quant Method : Z:\pestpcbsrv\HPCHEM1\ECD_D\Method\PD012523CLP.M
 Quant Title : GC Extractables
 QLast Update : Wed Jan 25 02:23:06 2023
 Response via : Initial Calibration
 Integrator: ChemStation

Volume Inj. : 1 µl
 Signal #1 Phase : ZB-MR1 Signal #2 Phase: ZB-MR2
 Signal #1 Info : 30M x 0.32mm x0.5 Signal #2 Info : 30M x 0.32mm x 0.25µm



(13) Dieldrin (MA)
 6.371min 13.802 ng/ml
 response 46378355

(13) Dieldrin #2 (MA)
 5.373min 15.417 ng/ml
 response 23994953

Data Path : Z:\pestpcbsrv\HPCHEM1\ECD_D\Data\PD012623\
 Data File : PD073779.D
 Signal(s) : Signal #1: ECD1A.ch Signal #2: ECD2B.ch
 Acq On : 25 Jan 2023 16:58
 Operator : AR\AJ
 Sample : 01277-04
 Misc :
 ALS Vial : 14 Sample Multiplier: 1

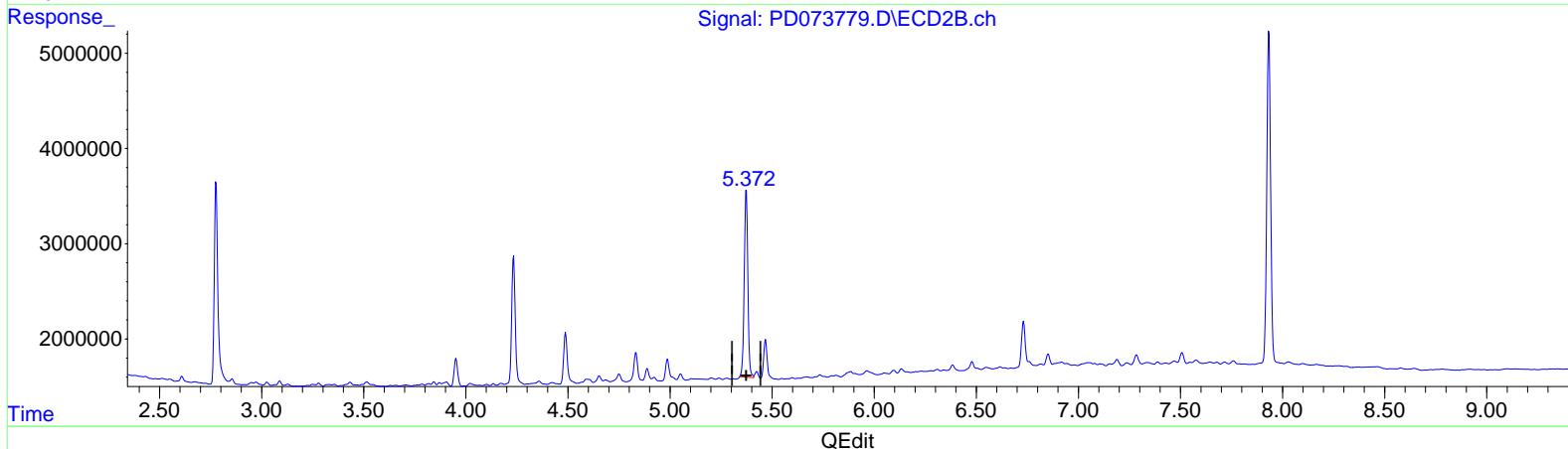
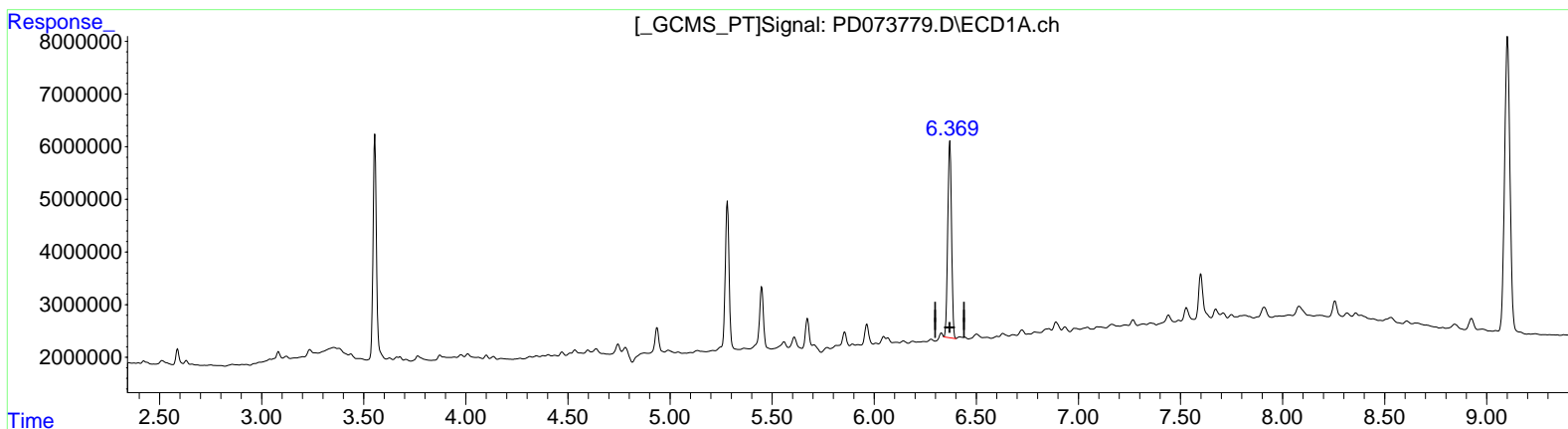
Instrument :
 ECD_D
 ClientSampleId :
 EX9G8

Manual Integrations APPROVED

Reviewed By : Abdul Mirza 01/26/2023
 Supervised By : Ankita Jodhani 01/26/2023

Integration File signal 1: autoint1.e
 Integration File signal 2: autoint2.e
 Quant Time: Jan 25 20:56:06 2023
 Quant Method : Z:\pestpcbsrv\HPCHEM1\ECD_D\Method\PD012523CLP.M
 Quant Title : GC Extractables
 QLast Update : Wed Jan 25 02:23:06 2023
 Response via : Initial Calibration
 Integrator: ChemStation

Volume Inj. : 1 µl
 Signal #1 Phase : ZB-MR1 Signal #2 Phase: ZB-MR2
 Signal #1 Info : 30M x 0.32mm x 0.5 Signal #2 Info : 30M x 0.32mm x 0.25µm



(13) Dieldrin (MA)
 6.369min 14.204 ng/ml m
 response 47730577

(13) Dieldrin #2 (MA)
 5.373min 15.417 ng/ml
 response 23994953