

Data Path : Z:\pestpcbsrv\HPCHEM1\ECD_D\Data\PD012623\
 Data File : PD073765.D
 Signal(s) : Signal #1: ECD1A.ch Signal #2: ECD2B.ch
 Acq On : 25 Jan 2023 08:33
 Operator : AR\AJ
 Sample : HEXANE
 Misc :
 ALS Vial : 1 Sample Multiplier: 1

Instrument :
 ECD_D
ClientSampleId :
 HEXANE

Integration File signal 1: autoint1.e
 Integration File signal 2: autoint2.e
 Quant Time: Jan 25 20:42:18 2023
 Quant Method : Z:\pestpcbsrv\HPCHEM1\ECD_D\Method\PD012523CLP.M
 Quant Title : GC Extractables
 QLast Update : Wed Jan 25 02:23:06 2023
 Response via : Initial Calibration
 Integrator: ChemStation

Volume Inj. : 1 µl
 Signal #1 Phase : ZB-MR1 Signal #2 Phase: ZB-MR2
 Signal #1 Info : 30M x 0.32mm x0.5 Signal #2 Info : 30M x 0.32mm x 0.25µm

Compound	RT#1	RT#2	Resp#1	Resp#2	ng/ml	ng/ml
----------	------	------	--------	--------	-------	-------

 System Monitoring Compounds

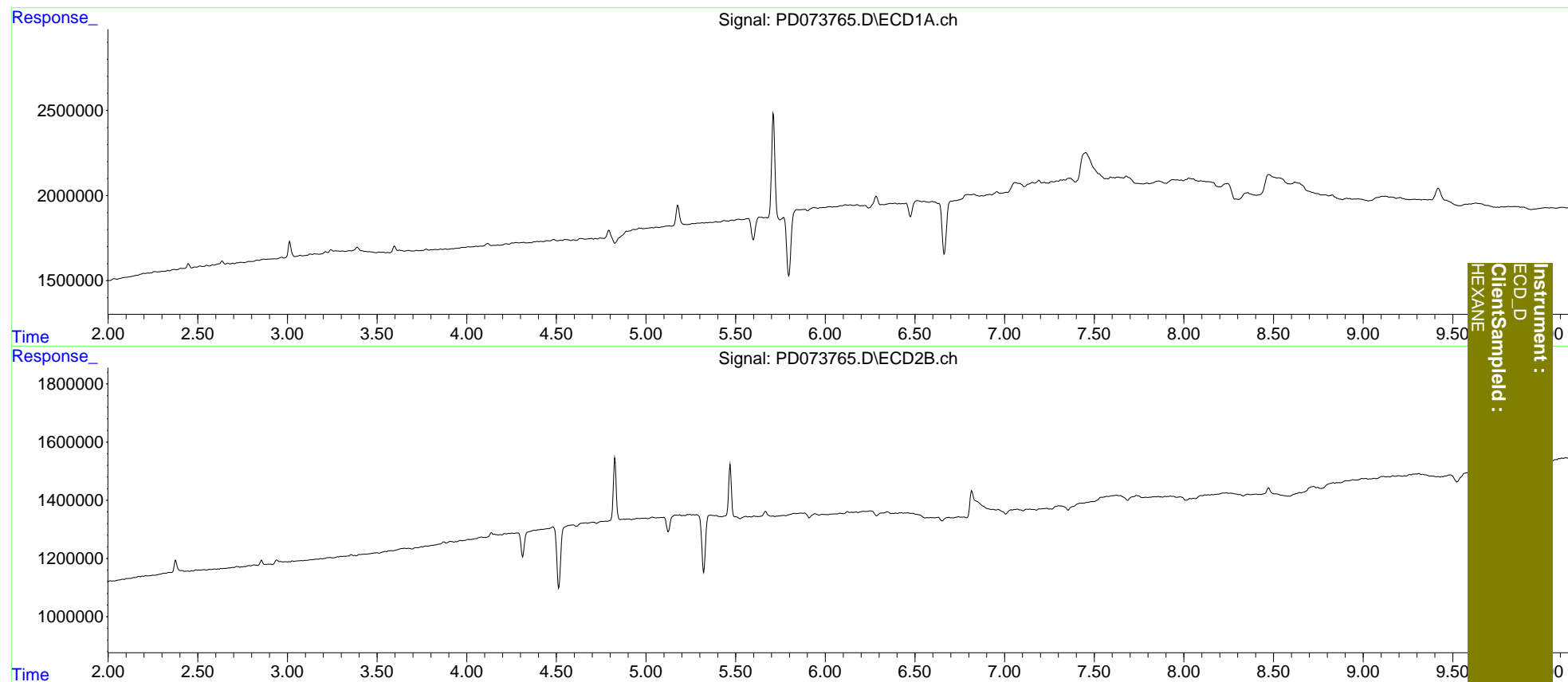
Target Compounds

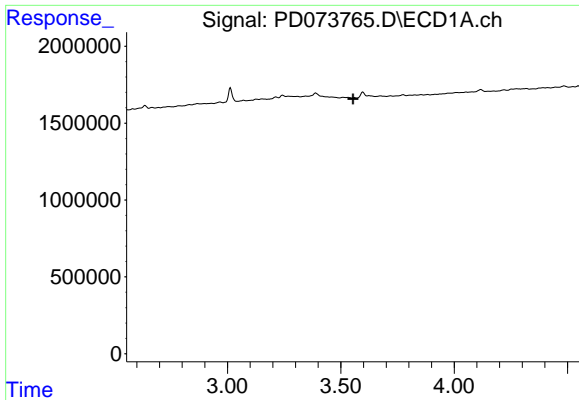
(f)=RT Delta > 1/2 Window (#)=Amounts differ by > 25% (m)=manual int.

Data Path : Z:\pestpcbsrv\HPCHEM1\ECD_D\Data\PD012623\
Data File : PD073765.D
Signal(s) : Signal #1: ECD1A.ch Signal #2: ECD2B.ch
Acq On : 25 Jan 2023 08:33
Operator : AR\AJ
Sample : HEXANE
Misc :
ALS Vial : 1 Sample Multiplier: 1

Integration File signal 1: autoint1.e
Integration File signal 2: autoint2.e
Quant Time: Jan 25 20:42:18 2023
Quant Method : Z:\pestpcbsrv\HPCHEM1\ECD_D\Method\PD012523CLP.M
Quant Title : GC Extractables
QLast Update : Wed Jan 25 02:23:06 2023
Response via : Initial Calibration
Integrator: ChemStation

Volume Inj. : 1 μ l
Signal #1 Phase : ZB-MR1 Signal #2 Phase: ZB-MR2
Signal #1 Info : 30M x 0.32mm x 0.5 Signal #2 Info : 30M x 0.32mm x 0.25 μ m

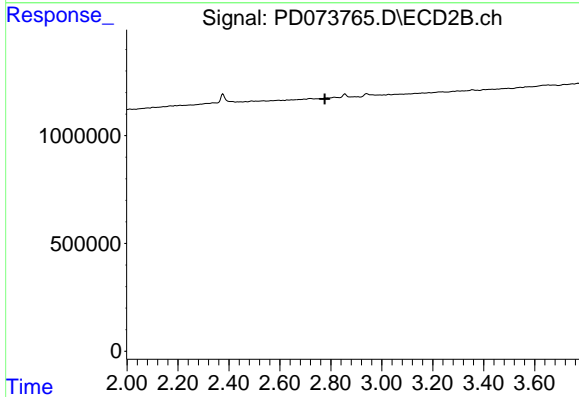




#1 Tetrachloro-m-xylene

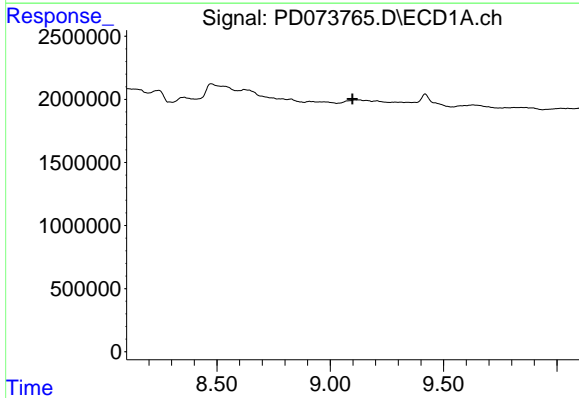
R.T.: 0.000 min
 Exp R.T. : 3.554 min
 Response: 0
 Conc: N.D.

Instrument :
 ECD_D
 ClientSampleId :
 HEXANE



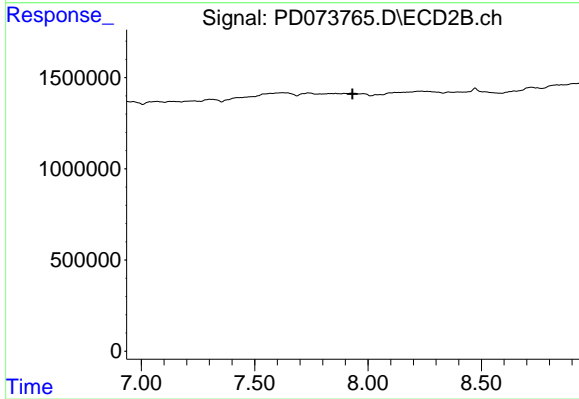
#1 Tetrachloro-m-xylene

R.T.: 0.000 min
 Exp R.T. : 2.776 min
 Response: 0
 Conc: N.D.



#27 Decachlorobiphenyl

R.T.: 0.000 min
 Exp R.T. : 9.098 min
 Response: 0
 Conc: N.D.



#27 Decachlorobiphenyl

R.T.: 0.000 min
 Exp R.T. : 7.932 min
 Response: 0
 Conc: N.D.