

Data Path : Z:\pestpcbsrv\HPCHEM1\ECD_D\Data\PD012820\
 Data File : PD057086.D
 Signal(s) : Signal #1: ECD1A.ch Signal #2: ECD2B.ch
 Acq On : 28 Jan 2020 16:31
 Operator : AJ\MA
 Sample : L1269-06
 Misc :
 ALS Vial : 17 Sample Multiplier: 1

Instrument :
 ECD_D
 ClientSampleId :

Integration File signal 1: autoint1.e
 Integration File signal 2: autoint2.e
 Quant Time: Jan 29 00:27:44 2020
 Quant Method : Z:\pestpcbsrv\HPCHEM1\ECD_D\Method\PD011820.M
 Quant Title : GC Extractables
 QLast Update : Mon Jan 20 05:43:46 2020
 Response via : Initial Calibration
 Integrator: ChemStation

Volume Inj. : 2 µl
 Signal #1 Phase : ZB-MR2 Signal #2 Phase: ZB-MR1
 Signal #1 Info : 30M x 0.32mm x0.2 Signal #2 Info : 30M x 0.32mm x 0.50µm

Compound	RT#1	RT#2	Resp#1	Resp#2	ng/ml	ng/ml

System Monitoring Compounds						
1) SA Tetrachlo...	3.286	3.961	18846009	39681208	22.820	24.250
28) SA Decachlor...	7.959	9.000	21601784	37695006	22.289	22.616

Target Compounds

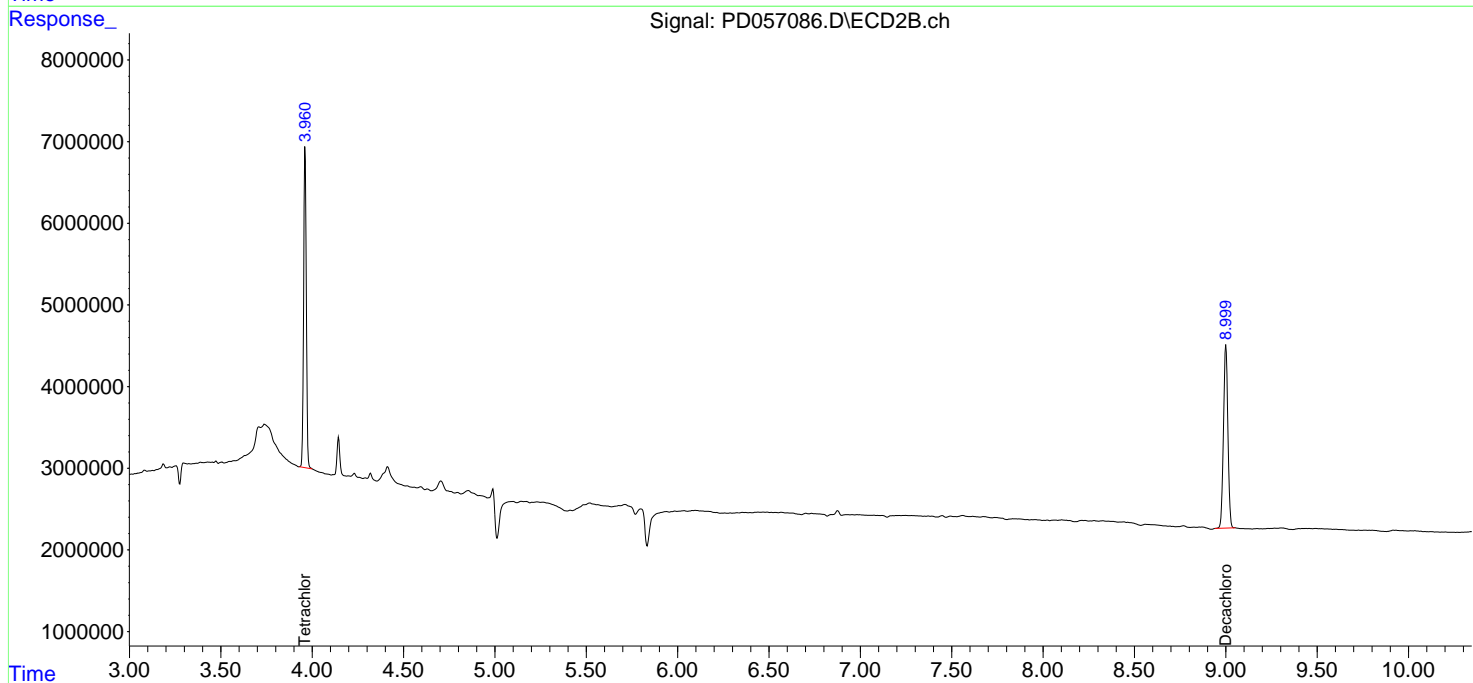
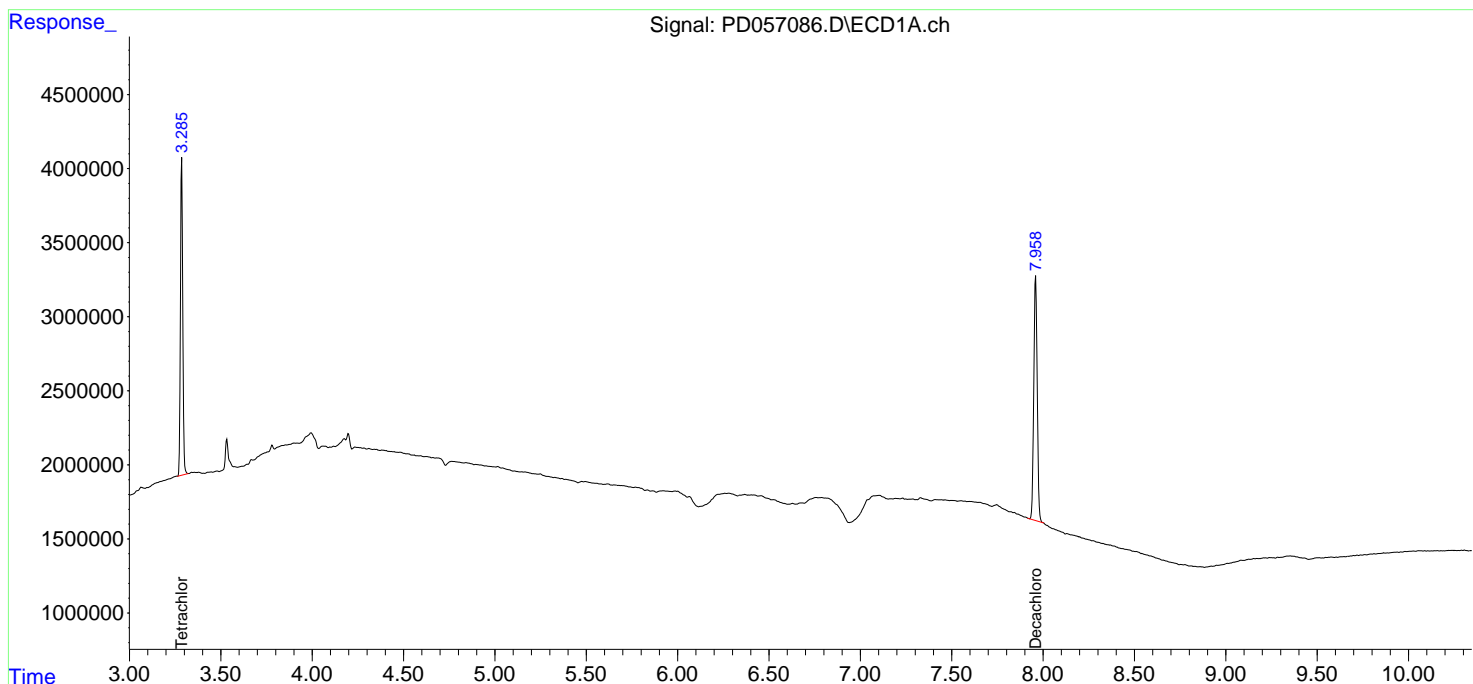
(f)=RT Delta > 1/2 Window (#)=Amounts differ by > 25% (m)=manual int.

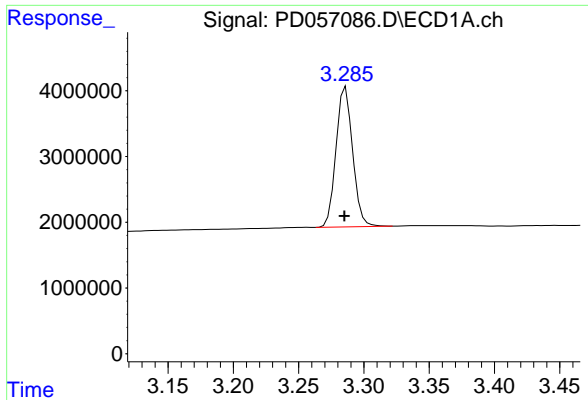
Data Path : Z:\pestpcbsrv\HPCHEM1\ECD_D\Data\PD012820\
 Data File : PD057086.D
 Signal(s) : Signal #1: ECD1A.ch Signal #2: ECD2B.ch
 Acq On : 28 Jan 2020 16:31
 Operator : AJ\MA
 Sample : L1269-06
 Misc :
 ALS Vial : 17 Sample Multiplier: 1

Instrument :
 ECD_D
 ClientSampled :

Integration File signal 1: autoint1.e
 Integration File signal 2: autoint2.e
 Quant Time: Jan 29 00:27:44 2020
 Quant Method : Z:\pestpcbsrv\HPCHEM1\ECD_D\Method\PD011820.M
 Quant Title : GC Extractables
 QLast Update : Mon Jan 20 05:43:46 2020
 Response via : Initial Calibration
 Integrator: ChemStation

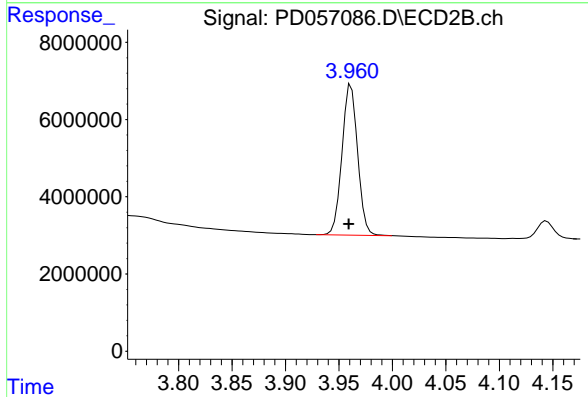
Volume Inj. : 2 µl
 Signal #1 Phase : ZB-MR2 Signal #2 Phase: ZB-MR1
 Signal #1 Info : 30M x 0.32mm x0.2 Signal #2 Info : 30M x 0.32mm x 0.50µm



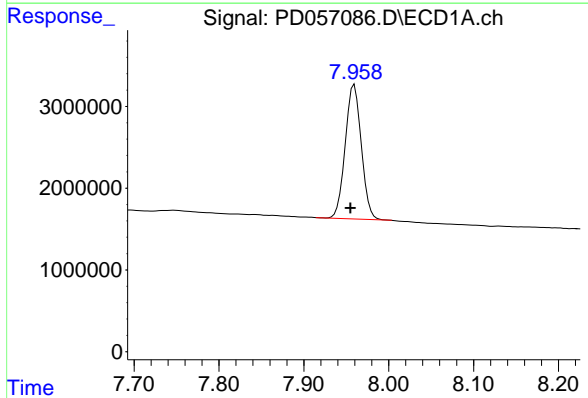


#1 Tetrachloro-m-xylene
 R.T.: 3.286 min
 Delta R.T.: 0.001 min
 Response: 18846009
 Conc: 22.82 ng/ml

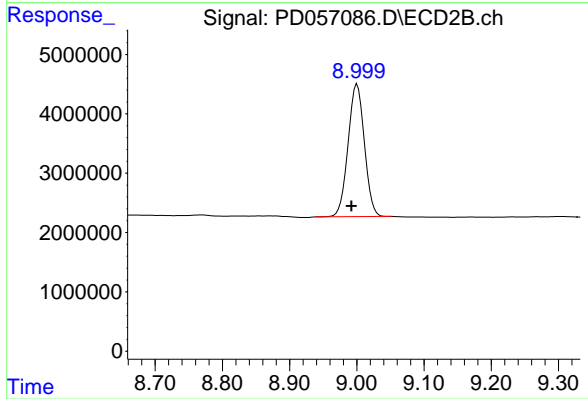
Instrument :
 ECD_D
 ClientSampleId :



#1 Tetrachloro-m-xylene
 R.T.: 3.961 min
 Delta R.T.: 0.002 min
 Response: 39681208
 Conc: 24.25 ng/ml



#28 Decachlorobiphenyl
 R.T.: 7.959 min
 Delta R.T.: 0.005 min
 Response: 21601784
 Conc: 22.29 ng/ml



#28 Decachlorobiphenyl
 R.T.: 9.000 min
 Delta R.T.: 0.008 min
 Response: 37695006
 Conc: 22.62 ng/ml