

Data Path : Z:\pestpcbsrv\HPCHEM1\ECD_D\Data\PD012921\
 Data File : PD061079.D
 Signal(s) : Signal #1: ECD1A.ch Signal #2: ECD2B.ch
 Acq On : 29 Jan 2021 11:16
 Operator : DD\AJ
 Sample : M1263-04
 Misc :
 ALS Vial : 11 Sample Multiplier: 1

Instrument :
 ECD_D
 ClientSampleId :

Integration File signal 1: autoint1.e
 Integration File signal 2: autoint2.e
 Quant Time: Jan 30 00:14:50 2021
 Quant Method : Z:\pestpcbsrv\HPCHEM1\ECD_D\Method\PD012821.M
 Quant Title : GC Extractables
 QLast Update : Fri Jan 29 01:48:44 2021
 Response via : Initial Calibration
 Integrator: ChemStation

Volume Inj. : 2 µl
 Signal #1 Phase : ZB-MR2 Signal #2 Phase: ZB-MR1
 Signal #1 Info : 30M x 0.32mm x0.2 Signal #2 Info : 30M x 0.32mm x 0.50µm

Compound	RT#1	RT#2	Resp#1	Resp#2	ng/ml	ng/ml

System Monitoring Compounds						
1) SA Tetrachlo...	3.496	4.020	14852495	115.0E6	16.819	17.010
28) SA Decachlor...	8.277	9.104	9286322	68275757	10.783	11.196
Target Compounds						
2) A alpha-BHC	0.000	4.415	0	4451328	N.D.	0.401 #
4) MA Heptachlor	0.000	5.187f	0	3866934	N.D.	0.381 #
6) B beta-BHC	4.445f	0.000	2395190	0	4.141	N.D. #
7) B delta-BHC	0.000	5.057f	0	25192479	N.D.	2.527 #
8) B Heptachlo...	0.000	5.926f	0	2808745	N.D.	0.347 #
11) B alpha-Chl...	0.000	6.188f	0	3568440	N.D.	0.422 #
19) B Endosulfa...	0.000	7.268f	0	2852083	N.D.	0.406 #
21) B Endrin ke...	0.000	7.750	0	2663961	N.D.	0.365 #
26) Chlordane-4	0.000	6.188f	0	3568440	N.D.	2.897 #

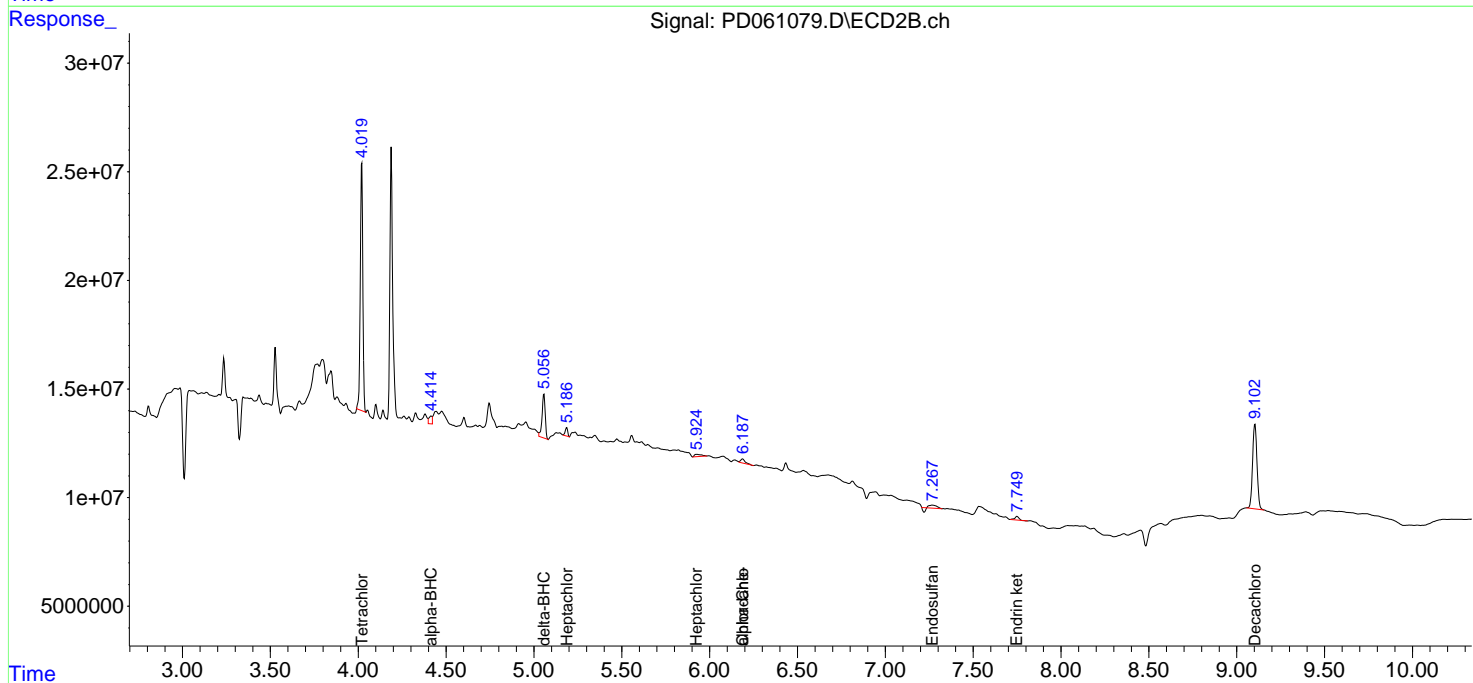
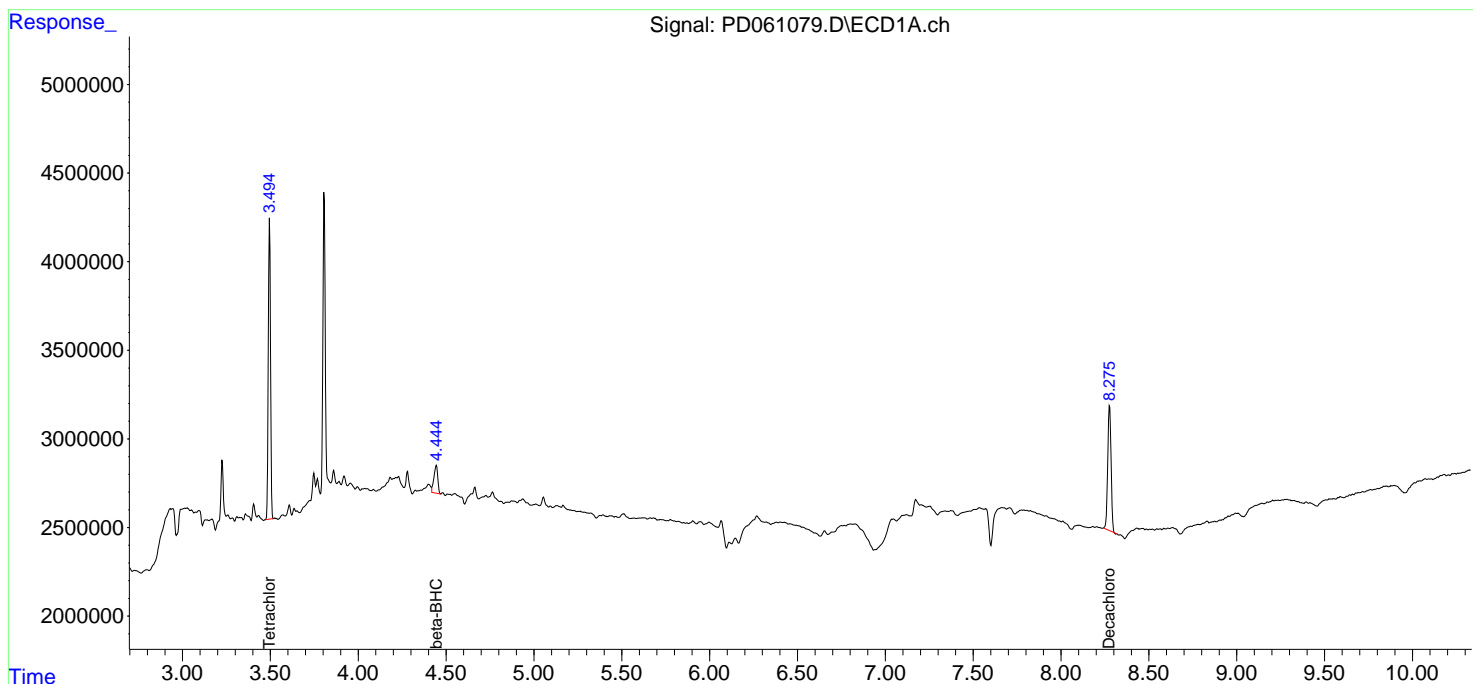
(f)=RT Delta > 1/2 Window (#)=Amounts differ by > 25% (m)=manual int.

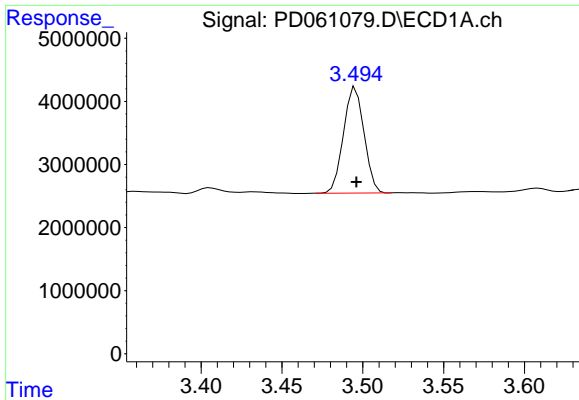
Data Path : Z:\pestpcbsrv\HPCHEM1\ECD_D\Data\PD012921\
 Data File : PD061079.D
 Signal(s) : Signal #1: ECD1A.ch Signal #2: ECD2B.ch
 Acq On : 29 Jan 2021 11:16
 Operator : DD\AJ
 Sample : M1263-04
 Misc :
 ALS Vial : 11 Sample Multiplier: 1

Instrument :
 ECD_D
 ClientSampleId :

Integration File signal 1: autoint1.e
 Integration File signal 2: autoint2.e
 Quant Time: Jan 30 00:14:50 2021
 Quant Method : Z:\pestpcbsrv\HPCHEM1\ECD_D\Method\PD012821.M
 Quant Title : GC Extractables
 QLast Update : Fri Jan 29 01:48:44 2021
 Response via : Initial Calibration
 Integrator: ChemStation

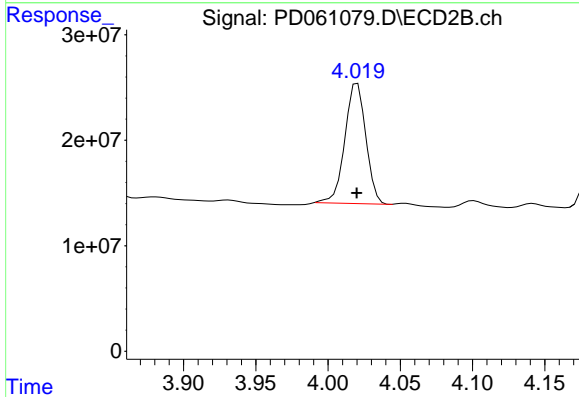
Volume Inj. : 2 µl
 Signal #1 Phase : ZB-MR2 Signal #2 Phase: ZB-MR1
 Signal #1 Info : 30M x 0.32mm x0.2 Signal #2 Info : 30M x 0.32mm x 0.50µm



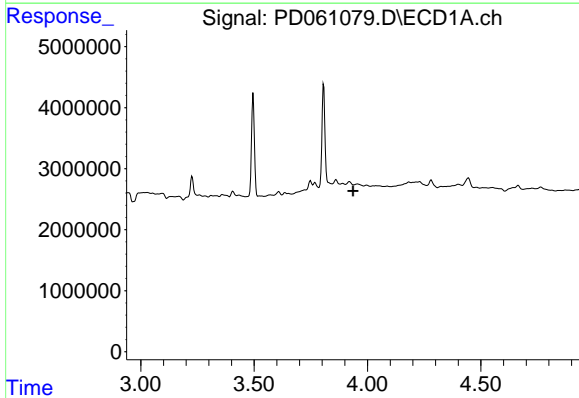


#1 Tetrachloro-m-xylene
 R.T.: 3.496 min
 Delta R.T.: 0.000 min
 Response: 14852495
 Conc: 16.82 ng/ml

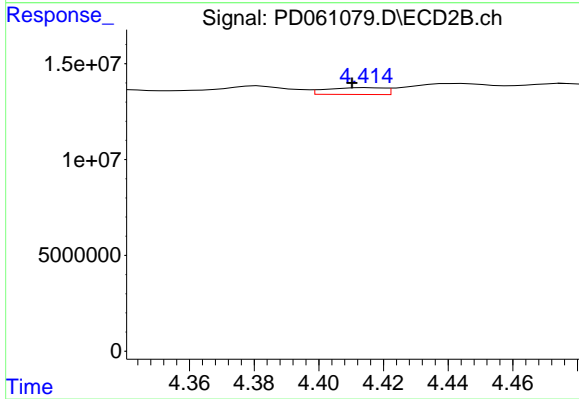
Instrument :
 ECD_D
 ClientSampleId :



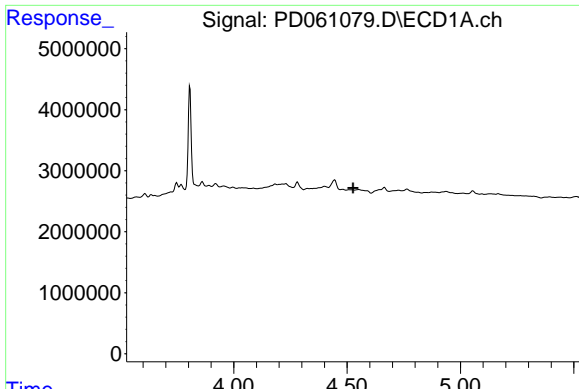
#1 Tetrachloro-m-xylene
 R.T.: 4.020 min
 Delta R.T.: 0.000 min
 Response: 114961861
 Conc: 17.01 ng/ml



#2 alpha-BHC
 R.T.: 0.000 min
 Exp R.T. : 3.937 min
 Response: 0
 Conc: N.D.



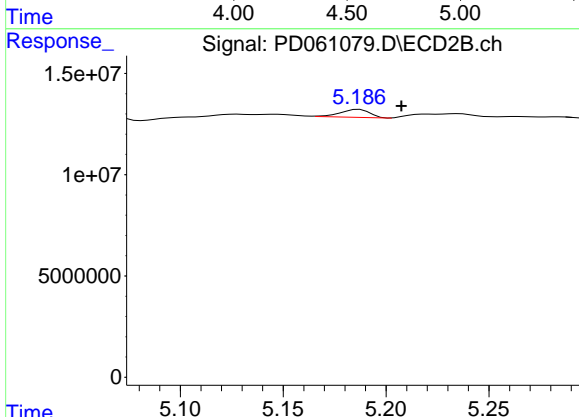
#2 alpha-BHC
 R.T.: 4.415 min
 Delta R.T.: 0.005 min
 Response: 4451328
 Conc: 0.40 ng/ml



#4 Heptachlor

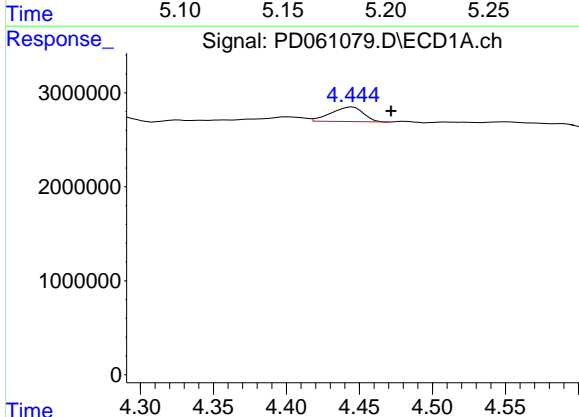
R.T.: 0.000 min
 Exp R.T.: 4.526 min
 Response: 0
 Conc: N.D.

Instrument :
 ECD_D
 ClientSampleId :



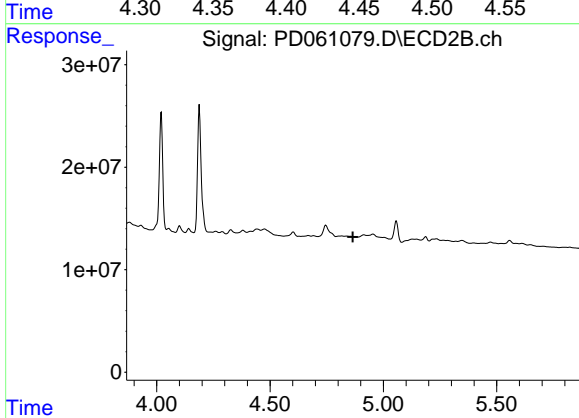
#4 Heptachlor

R.T.: 5.187 min
 Delta R.T.: -0.020 min
 Response: 3866934
 Conc: 0.38 ng/ml



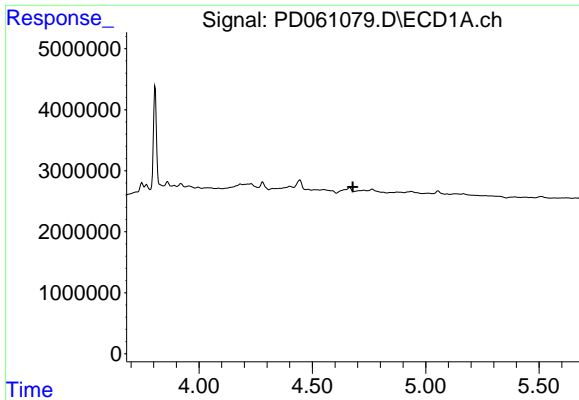
#6 beta-BHC

R.T.: 4.445 min
 Delta R.T.: -0.027 min
 Response: 2395190
 Conc: 4.14 ng/ml



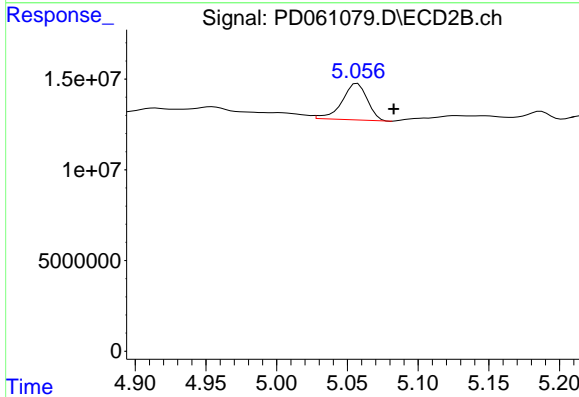
#6 beta-BHC

R.T.: 0.000 min
 Exp R.T.: 4.865 min
 Response: 0
 Conc: N.D.

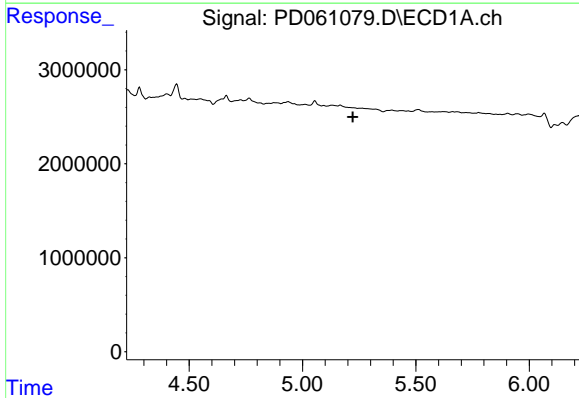


#7 delta-BHC
 R.T.: 0.000 min
 Exp R.T. : 4.679 min
 Response: 0
 Conc: N.D.

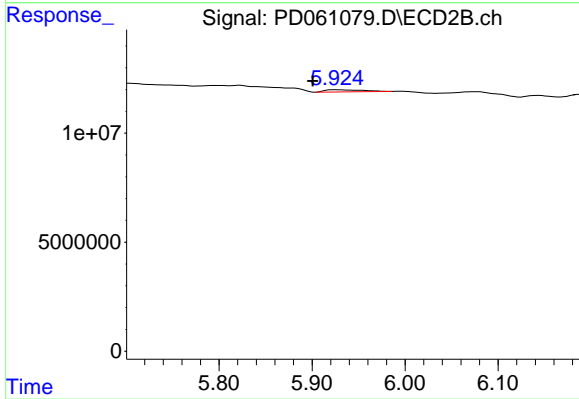
Instrument :
 ECD_D
 ClientSampleId :



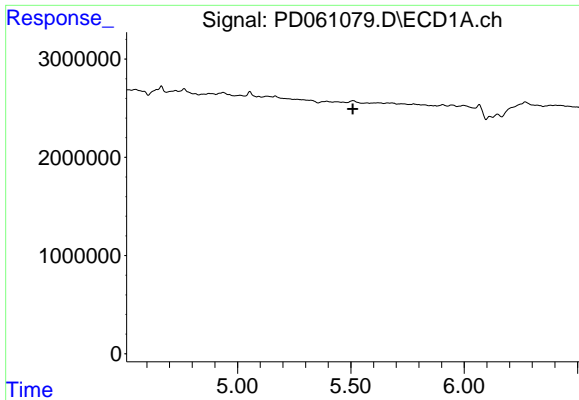
#7 delta-BHC
 R.T.: 5.057 min
 Delta R.T.: -0.026 min
 Response: 25192479
 Conc: 2.53 ng/ml



#8 Heptachlor epoxide
 R.T.: 0.000 min
 Exp R.T. : 5.222 min
 Response: 0
 Conc: N.D.



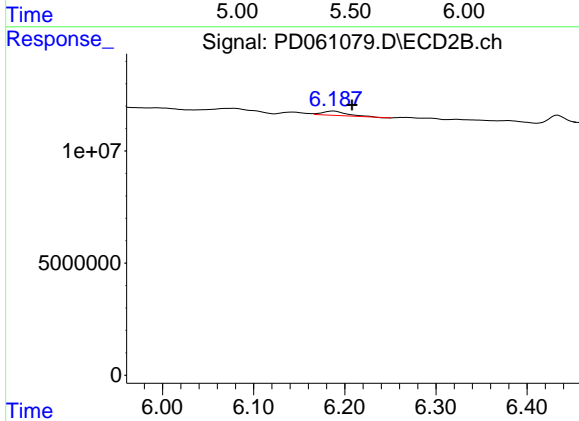
#8 Heptachlor epoxide
 R.T.: 5.926 min
 Delta R.T.: 0.025 min
 Response: 2808745
 Conc: 0.35 ng/ml



#11 alpha-Chlordane

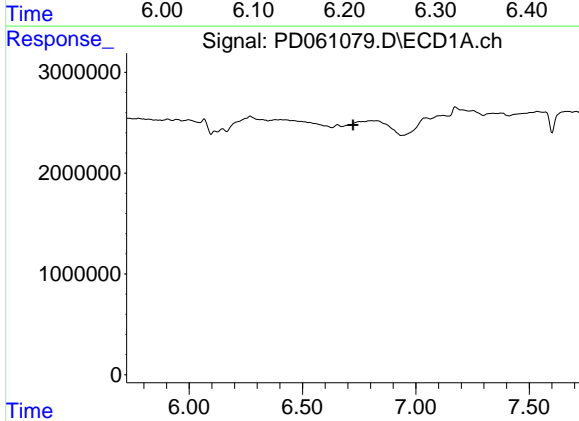
R.T.: 0.000 min
 Exp R.T. : 5.509 min
 Response: 0
 Conc: N.D.

Instrument :
 ECD_D
 ClientSampleId :



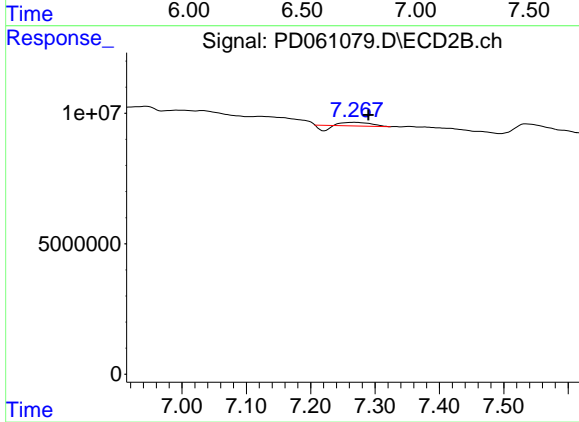
#11 alpha-Chlordane

R.T.: 6.188 min
 Delta R.T.: -0.020 min
 Response: 3568440
 Conc: 0.42 ng/ml



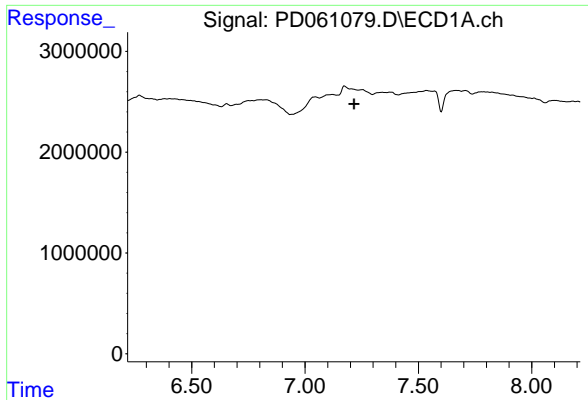
#19 Endosulfan Sulfate

R.T.: 0.000 min
 Exp R.T. : 6.723 min
 Response: 0
 Conc: N.D.



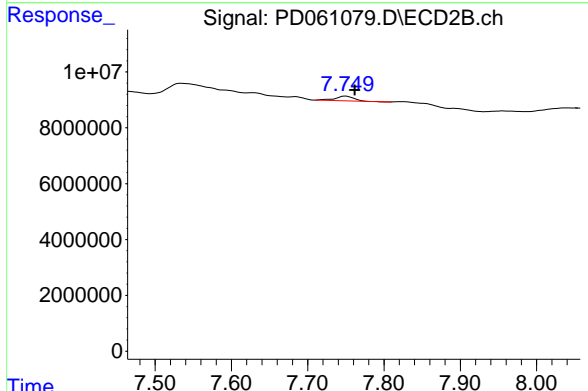
#19 Endosulfan Sulfate

R.T.: 7.268 min
 Delta R.T.: -0.022 min
 Response: 2852083
 Conc: 0.41 ng/ml

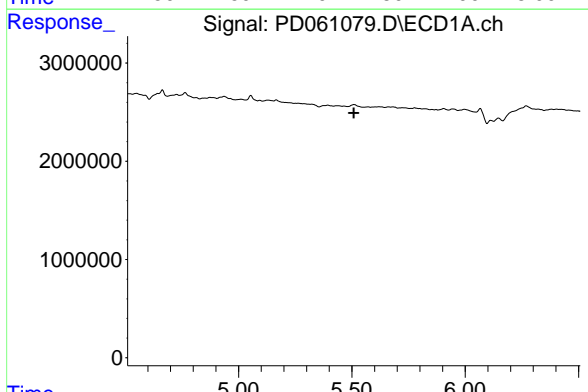


#21 Endrin ketone
 R.T.: 0.000 min
 Exp R.T. : 7.217 min
 Response: 0
 Conc: N.D.

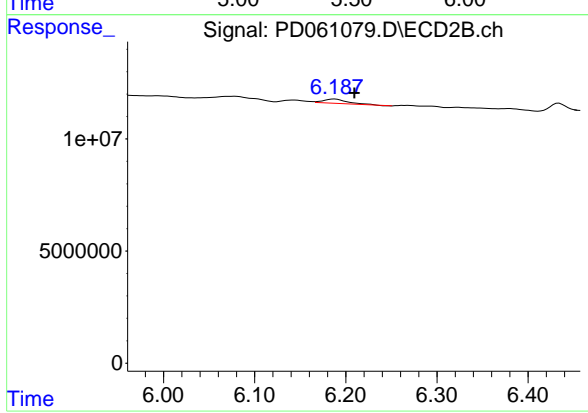
Instrument :
 ECD_D
 ClientSampleId :



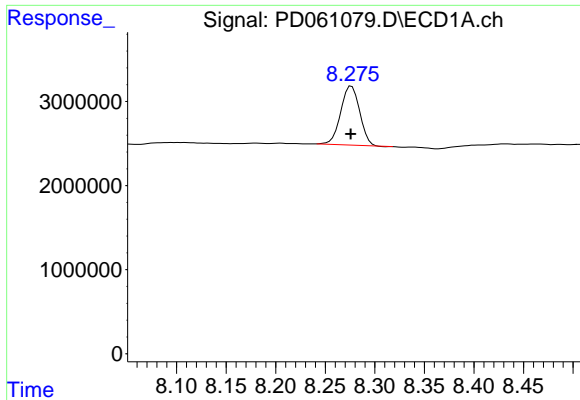
#21 Endrin ketone
 R.T.: 7.750 min
 Delta R.T.: -0.012 min
 Response: 2663961
 Conc: 0.36 ng/ml



#26 Chlordane-4
 R.T.: 0.000 min
 Exp R.T. : 5.508 min
 Response: 0
 Conc: N.D.



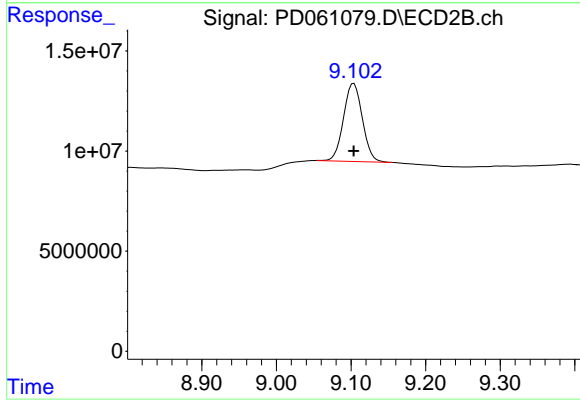
#26 Chlordane-4
 R.T.: 6.188 min
 Delta R.T.: -0.022 min
 Response: 3568440
 Conc: 2.90 ng/ml



#28 Decachlorobiphenyl

R.T.: 8.277 min
Delta R.T.: 0.000 min
Response: 9286322
Conc: 10.78 ng/ml

Instrument :
ECD_D
ClientSampleId :



#28 Decachlorobiphenyl

R.T.: 9.104 min
Delta R.T.: 0.000 min
Response: 68275757
Conc: 11.20 ng/ml